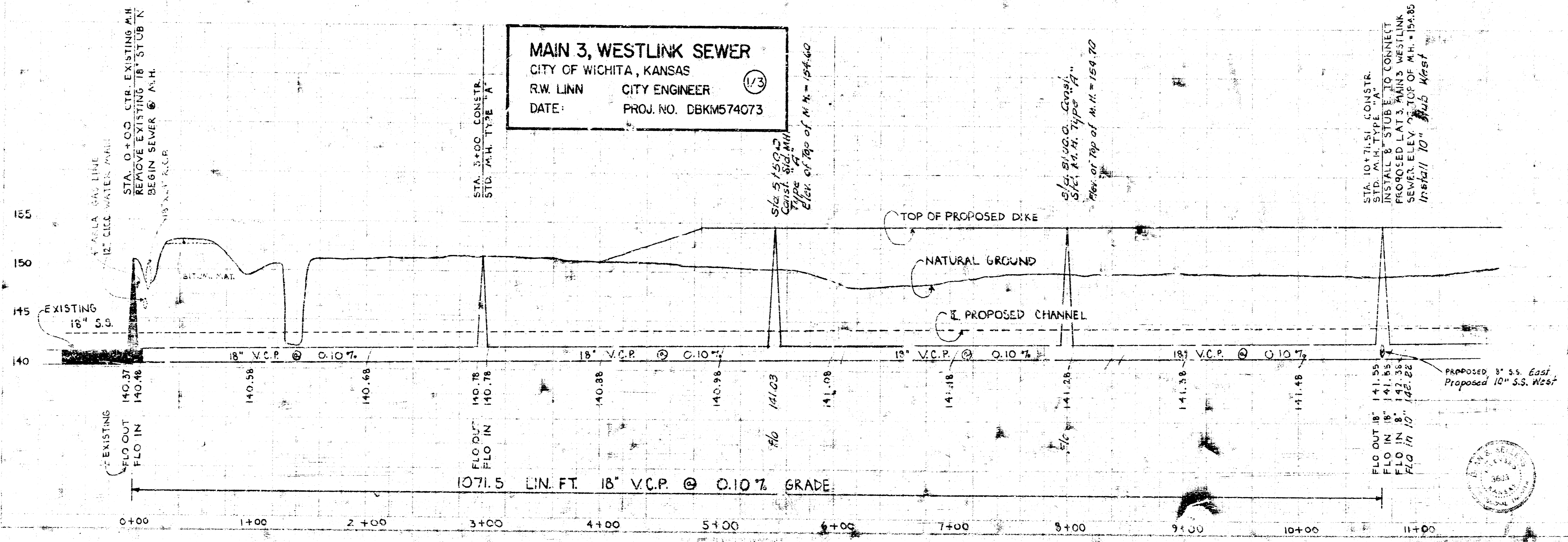
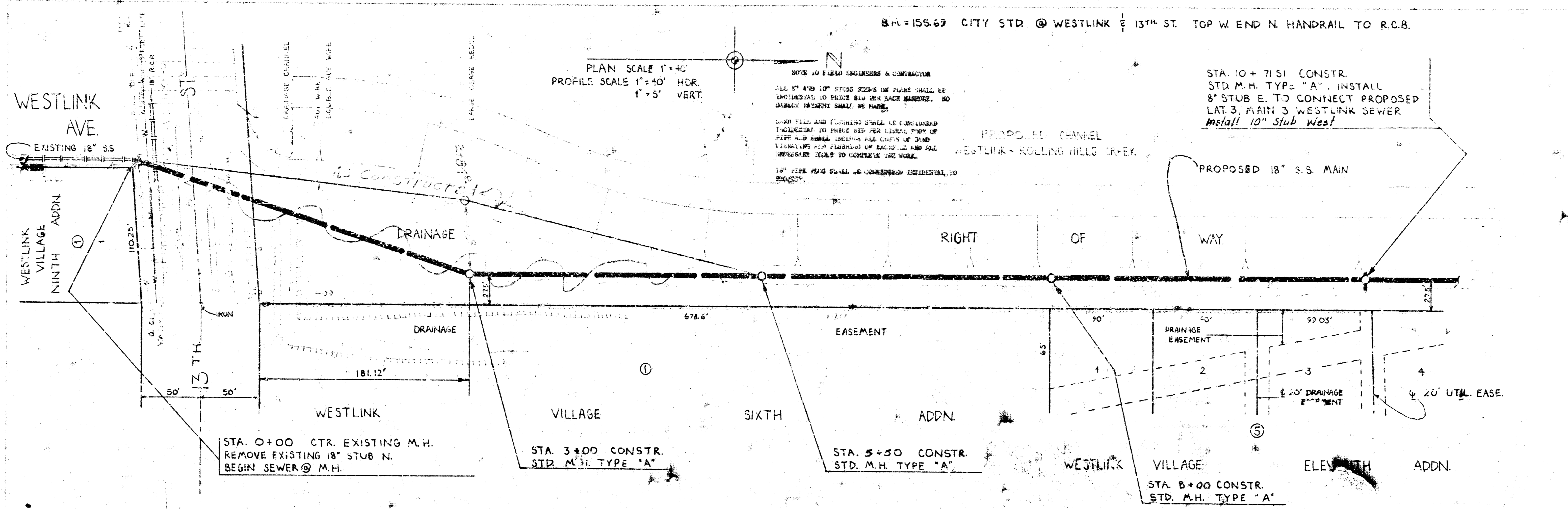


B.M. = 155.69 CITY STD. @ WESTLINK & 13TH ST. TOP W. END N. HANDRAIL TO R.C.B.

PLAN SCALE 1" = 40'  
PROFILE SCALE 1" = 40' HOR.  
1" = 5' VERT.

NOTE TO FIELD ENGINEER & CONTRACTOR  
ALL 8" AND 10" STUBS SHALL BE INSTALLED TO BRIDGE OVER EACH MANHOLE. NO JOINTS ALLOWED IN STUBS.  
8" AND 10" STUBS SHALL BE CONSIDERED PERMANENT. ALL JOINTS OF 8" AND 10" STUBS SHALL BE MADE WITH 10" DIA. COUPLERS AND ALL COUPLERS SHALL BE CONSIDERED PERMANENT.  
10" PIPE SHALL BE CONSIDERED PERMANENT TO PROJECT.

STA. 10+71.51 CONSTR.  
STD. M.H. TYPE "A". INSTALL  
8" STUB E. TO CONNECT PROPOSED  
LAT. 3, MAIN 3 WESTLINK SEWER  
Install 10" Stub West



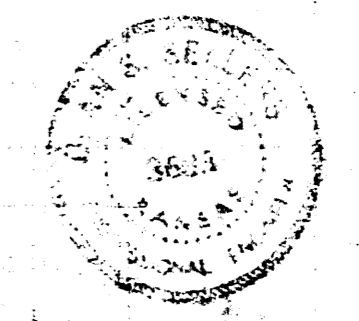
**MAIN 3, WESTLINK SEWER**  
CITY OF WICHITA, KANSAS  
R.W. LINN CITY ENGINEER  
DATE: PROJ. NO. DBKM574073

236

155

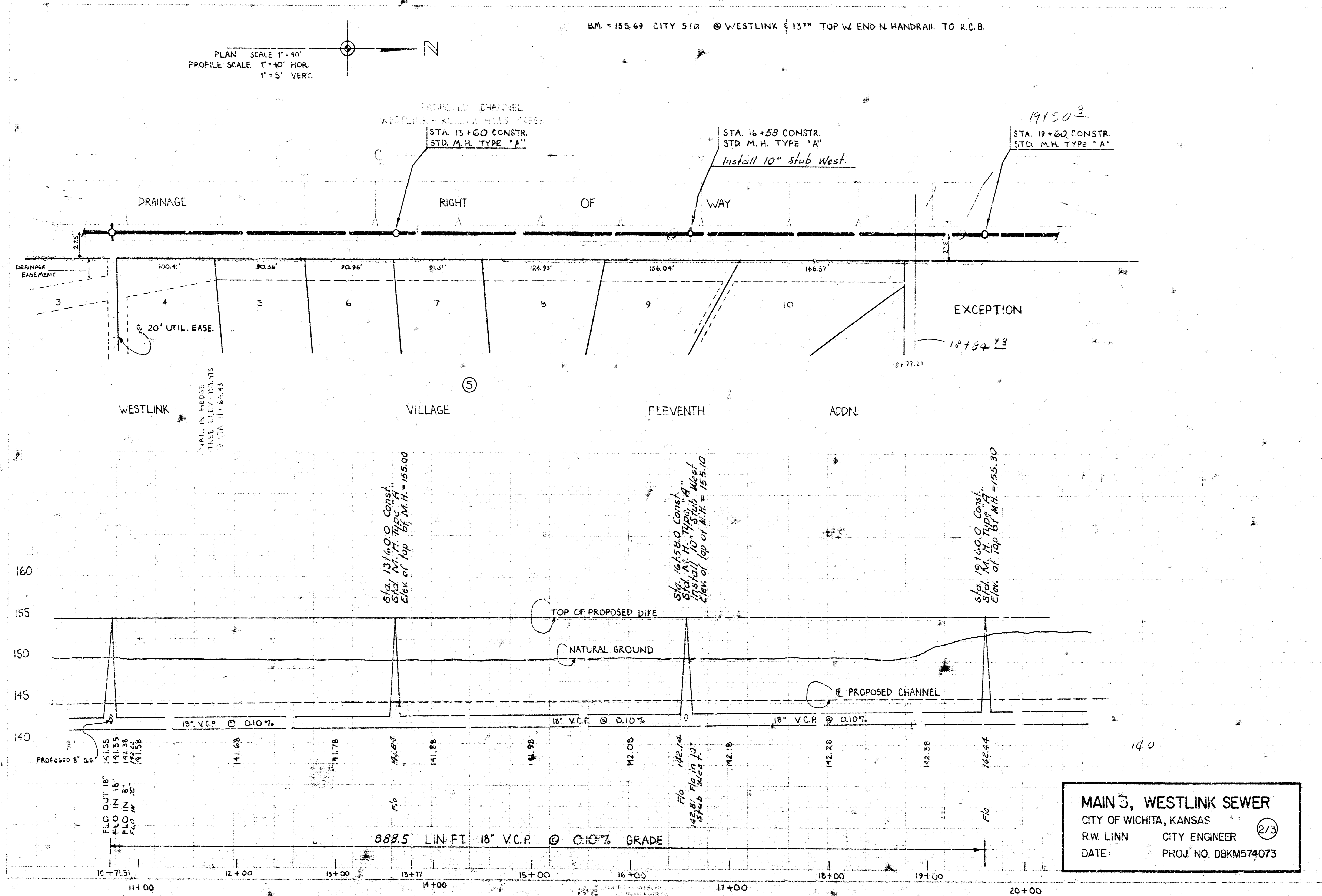
145

140



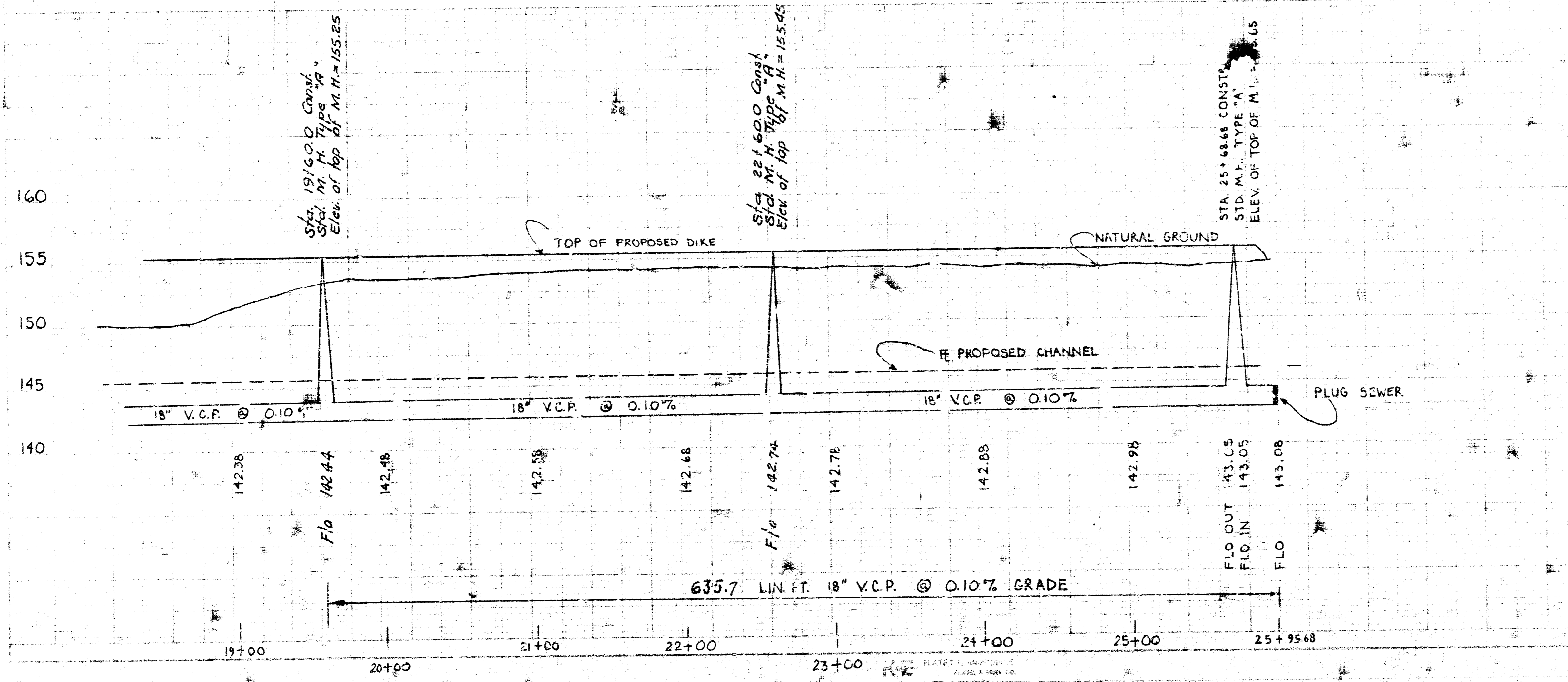
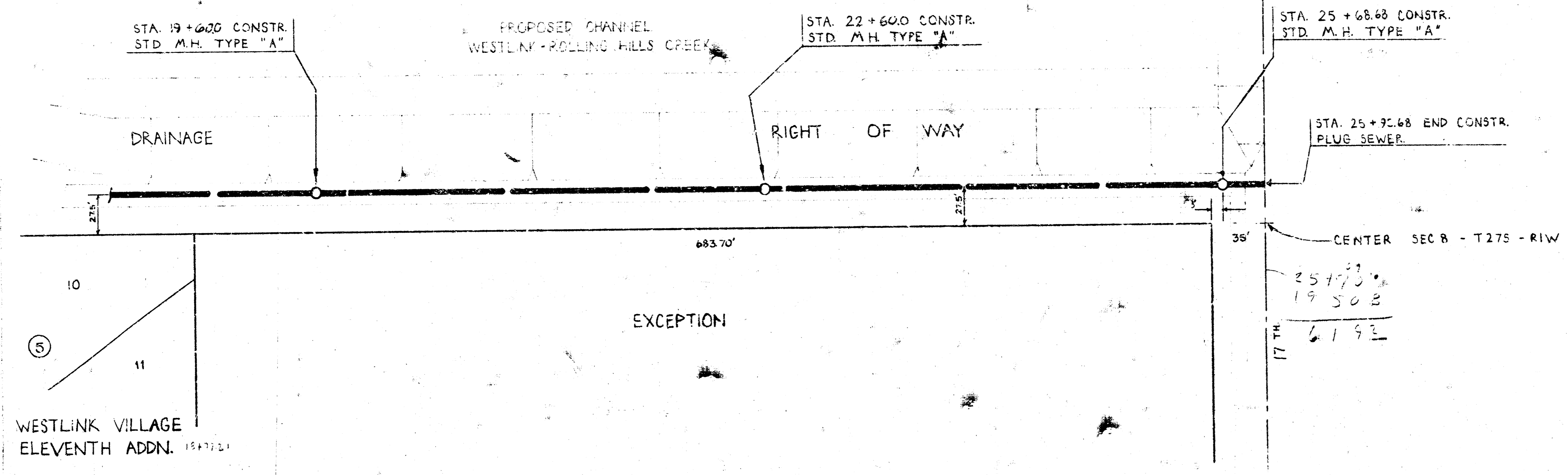
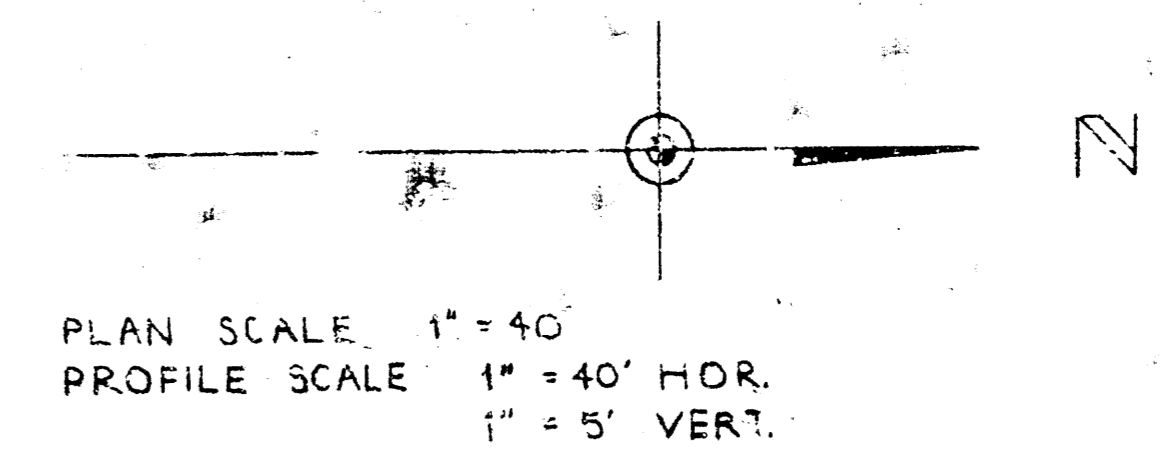
PLAN SCALE 1" = 40'  
 PROFILE SCALE 1" = 40' HOR.  
 1" = 5' VERT.

B.M. = 155.69 CITY STR @ WESTLINK 131' TOP W. END N. HANDRAIL TO R.C.B.



**MAIN 3, WESTLINK SEWER**  
 CITY OF WICHITA, KANSAS  
 R.W. LINN CITY ENGINEER  
 DATE: PROJ. NO. DBKM574073

B.M. 155.69 CITY STR @ WESTLINK @ 137<sup>th</sup> ST. TOP W. END N. HANDRAIL TO R.C.B.



**MAIN 3, WESTLINK SEWER**  
 CITY OF WICHITA, KANSAS  
 R.W. LINN CITY ENGINEER  
 DATE: PROJ. NO. DBKM574073