

LAT 3, MAIN 3, WESTLINK SEWER
 CITY OF WICHITA, KANSAS
 R.W LINN CITY ENGINEER (1/3)
 DATE: PROJ. NO. DBKL574027

WESTLINK VILLAGE

PLAN SCALE 1" = 40'
PROFILE SCALE 1" = 5' VERT.

WESTFIELD AVE
STA. 10+96.4 CONSTR.
STD. M.H. TYPE "A" OR "C"

STA. 16+21.2 CONSTR.
STD. M.H. TYPE "A" OR "C"

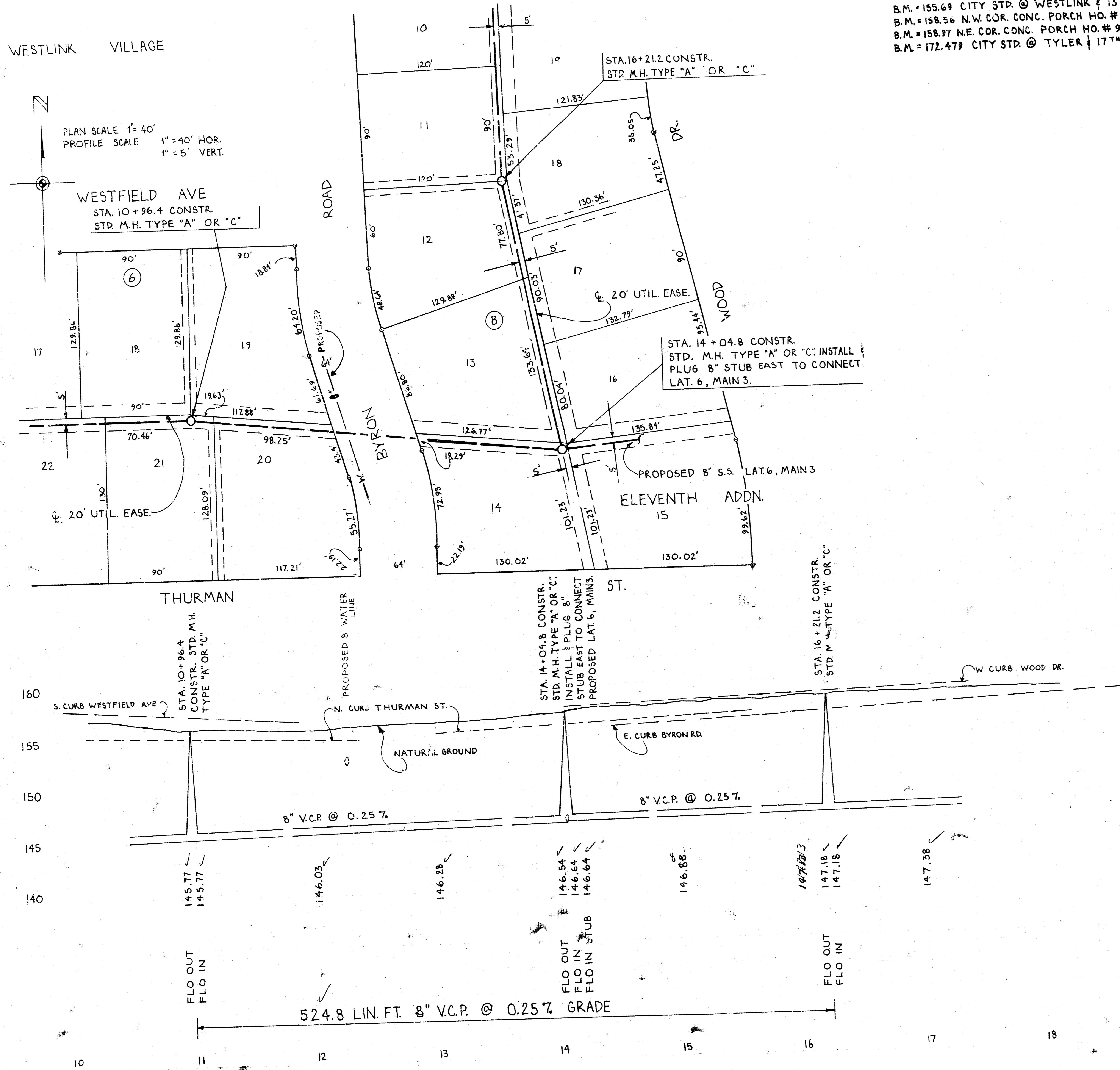
STA. 14+04.8 CONSTR.
STD. M.H. TYPE "A" OR "C". INSTALL &
PLUG 8" STUB EAST TO CONNECT
LAT. 6, MAIN 3.

PROPOSED 8" S.S. LAT. 6, MAIN 3

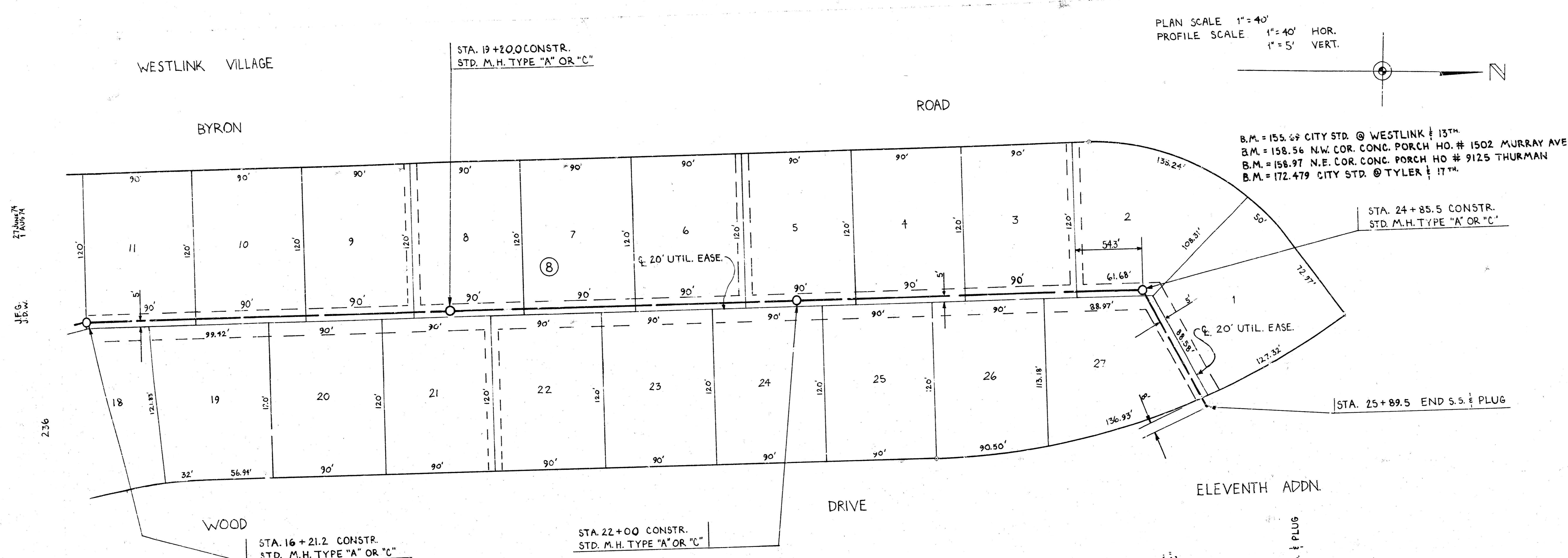
STA. 14+04.8 CONSTR.
STD. M.H. TYPE "A" OR "C".
INSTALL & PLUG 8"
STUB EAST TO CONNECT
PROPOSED LAT. 6, MAIN 3.

STA. 16+21.2 CONSTR.
STD. M.H. TYPE "A" OR "C"

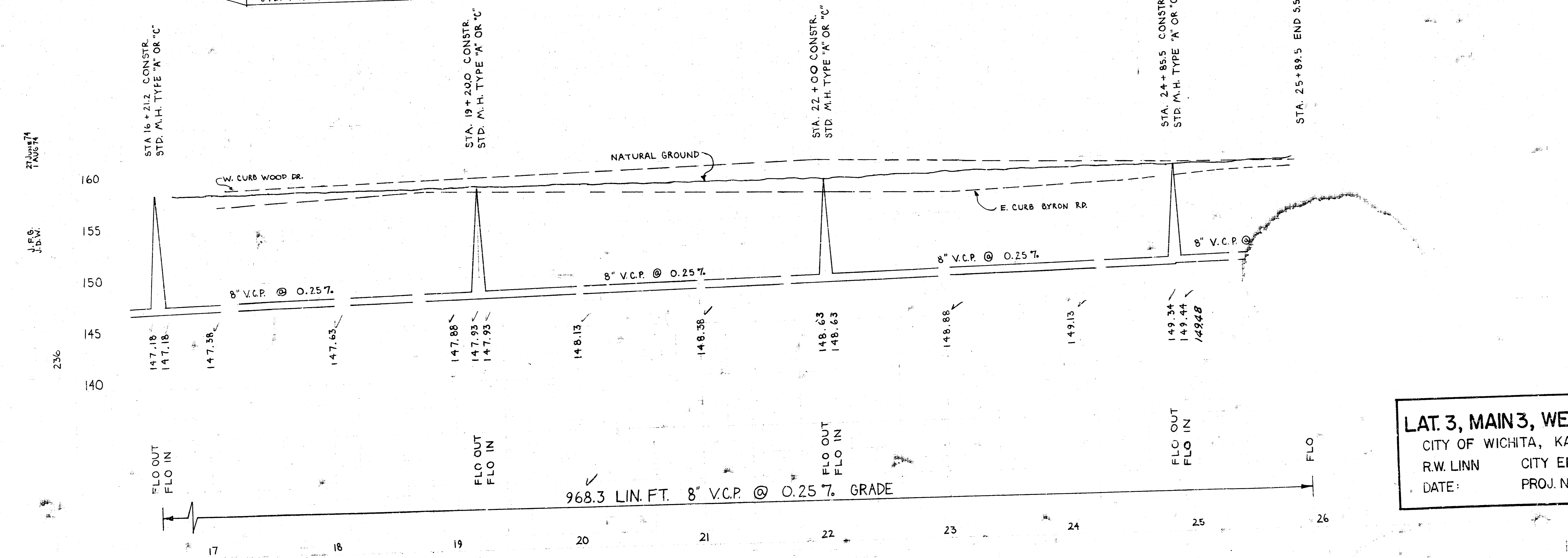
B.M. = 155.69 CITY STD. @ WESTLINK & 13TH.
B.M. = 158.56 N.W. COR. CONC. PORCH HO. # 1502 MURRAY AVE.
B.M. = 158.97 N.E. COR. CONC. PORCH HO. # 9125 THURMAN
B.M. = 172.479 CITY STD. @ TYLER & 17TH.



LAT. 3, MAIN 3, WESTLINK SEWER
 CITY OF WICHITA, KANSAS (2/3)
 R.W. LINN CITY ENGINEER
 DATE: PROJ. NO. DBK1.574027



B.M. = 155.69 CITY STD. @ WESTLINK & 13TH
 B.M. = 158.56 N.W. COR. CONC. PORCH HO. # 1502 MURRAY AVE.
 B.M. = 158.97 N.E. COR. CONC. PORCH HO # 9125 THURMAN
 B.M. = 172.479 CITY STD. @ TYLER & 17TH



LAT. 3, MAIN 3, WESTLINK SEWER
 CITY OF WICHITA, KANSAS
 R.W. LINN CITY ENGINEER
 DATE: PROJ. NO. DBKL574027