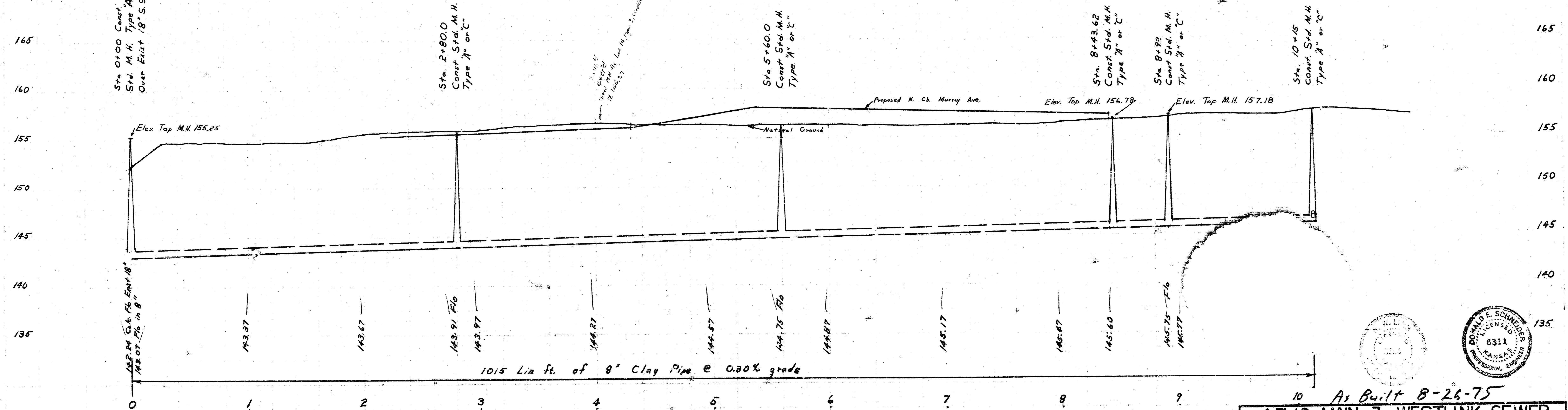
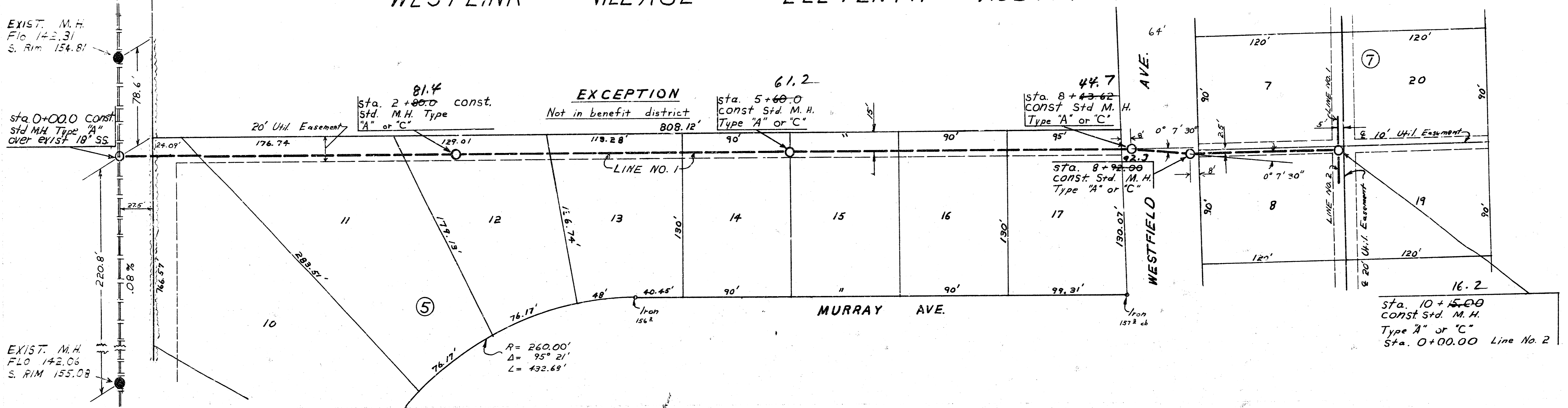


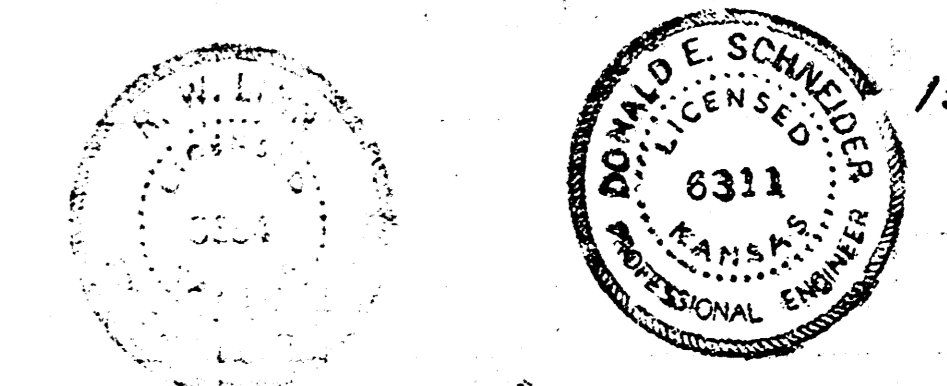
B.M. 172.48 17th E Tyler City B.M. Disc
 31° So. E 36' E of 1/4 Sec. Cor.
 B.M. 155.04 R.R. Spk. S. Fc. Large Usage Orange
 Hedge Tree 12' So. N.W. Cor. SE 1/4 Sec. 8

WESTLINK VILLAGE ELEVENTH ADDITION

Plan Scale 1" = 40'
 Profile Scale 1" = 40' Horiz.
 1" = 5' Vert.

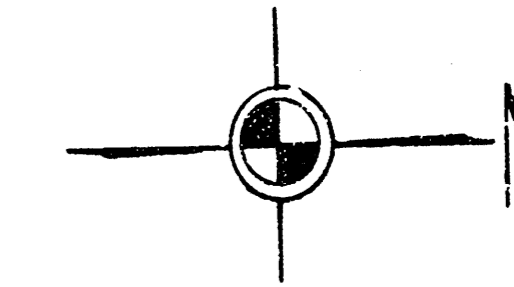
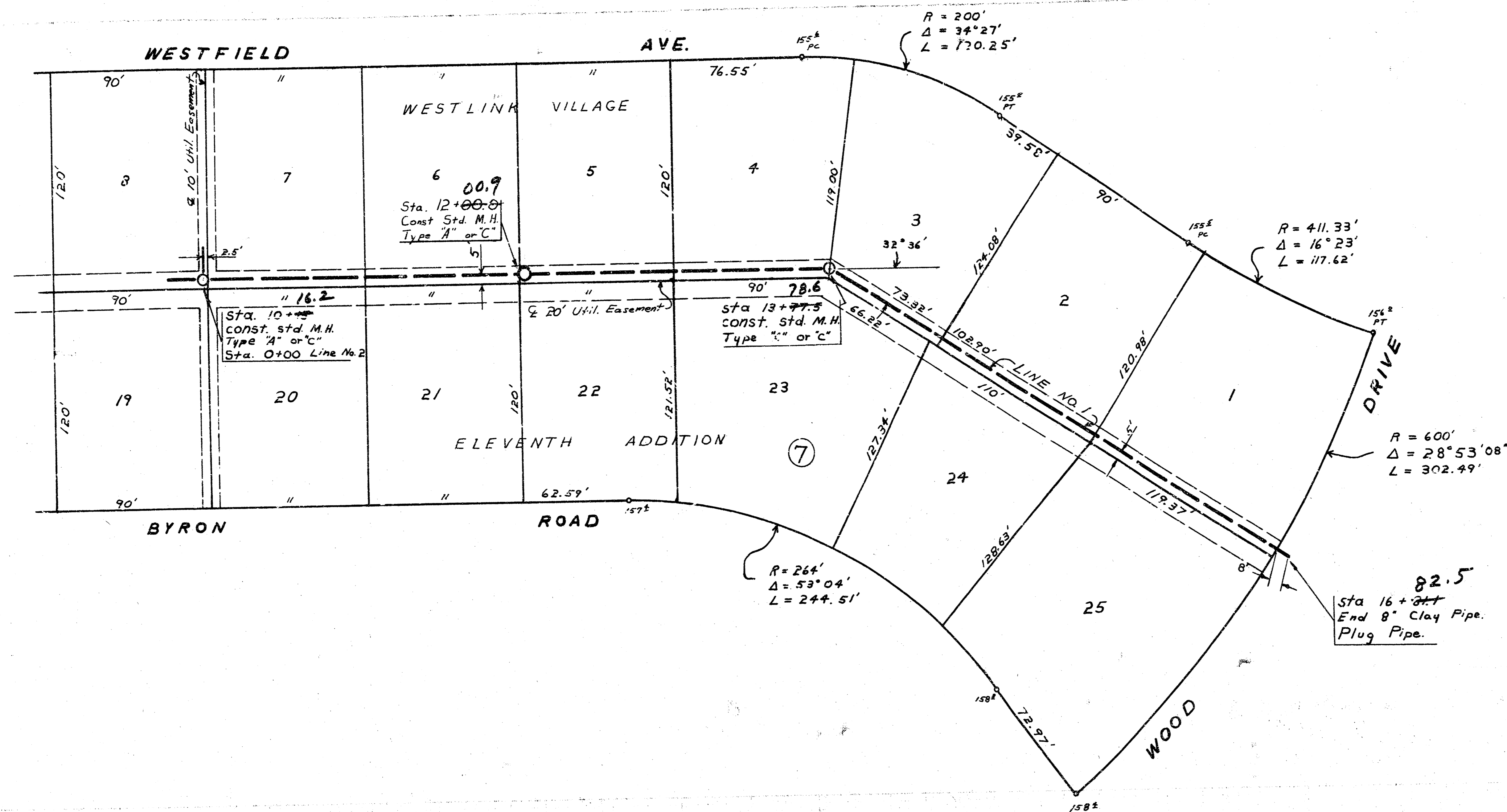


LAT. 12, MAIN 3, WESTLINK SEWER
 CITY OF WICHITA, KANSAS
 R. W. LINN — CITY ENGINEER
 Feb. 1975 PROJECT NO. DBKL574036

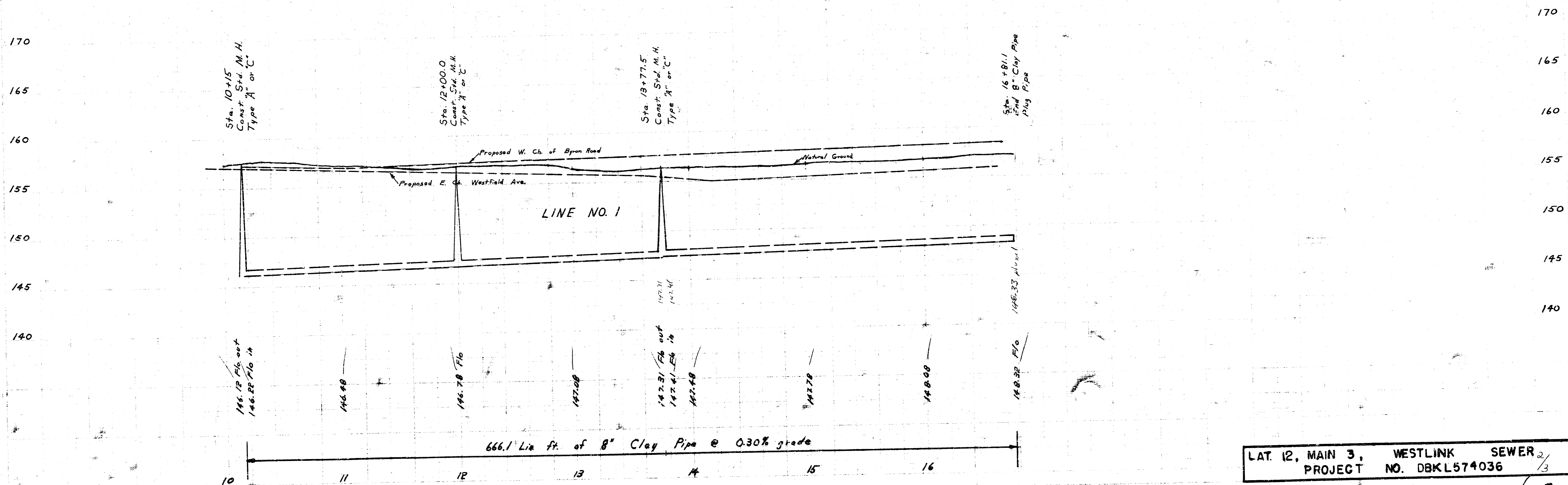


(M-267)
 Book outland, 1 of 3

FILMED FROM THE BEST

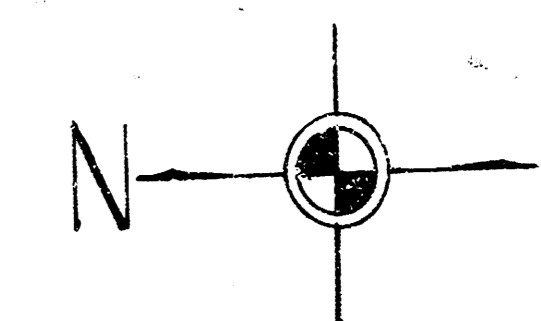


Plan Scale 1" = 40'
 Profile Scale 1" = 5' Vert



LAT. 12, MAIN 3, WESTLINK SEWER PROJECT NO. DBKL574036

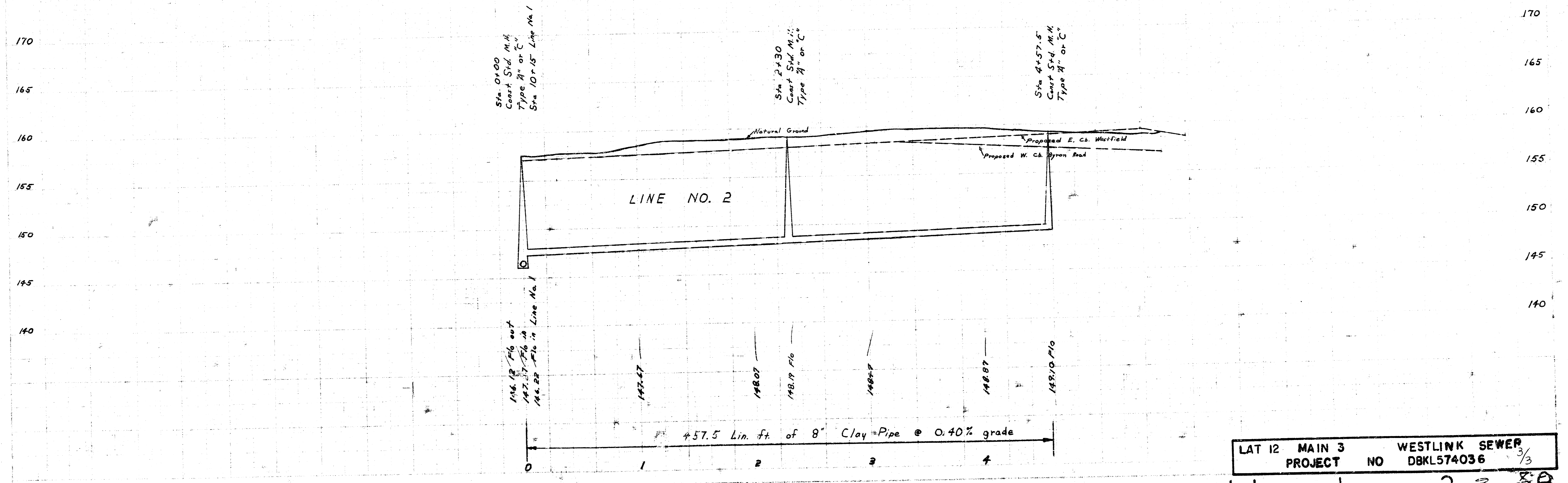
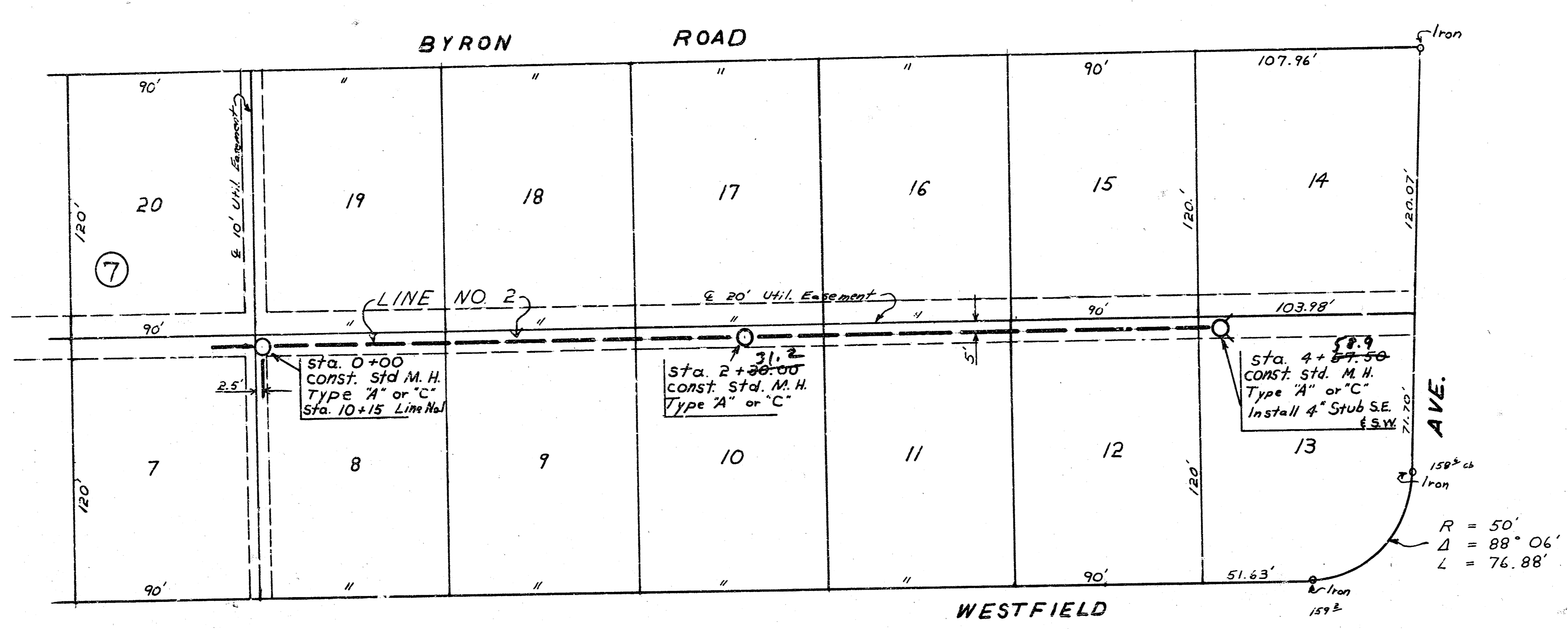
2 of 3



Plan Scale 1" = 40'
 Profile Scale 1" = 40' Horiz.
 1" = 5' Vert.

WESTLINK
 VILLAGE

ELEVENTH
 ADDITION



LAT 12 MAIN 3 WESTLINK SEWER
 PROJECT NO DBKL574036 3/3
 14 1 3 3 07 80