

**LAT 2, MAIN 4, WESTLINK SEWER
PROJECT NO. 468-76-245-80980-000-000-001**

**CITY OF WICHITA, KANSAS
DEPARTMENT OF ENGINEERING**

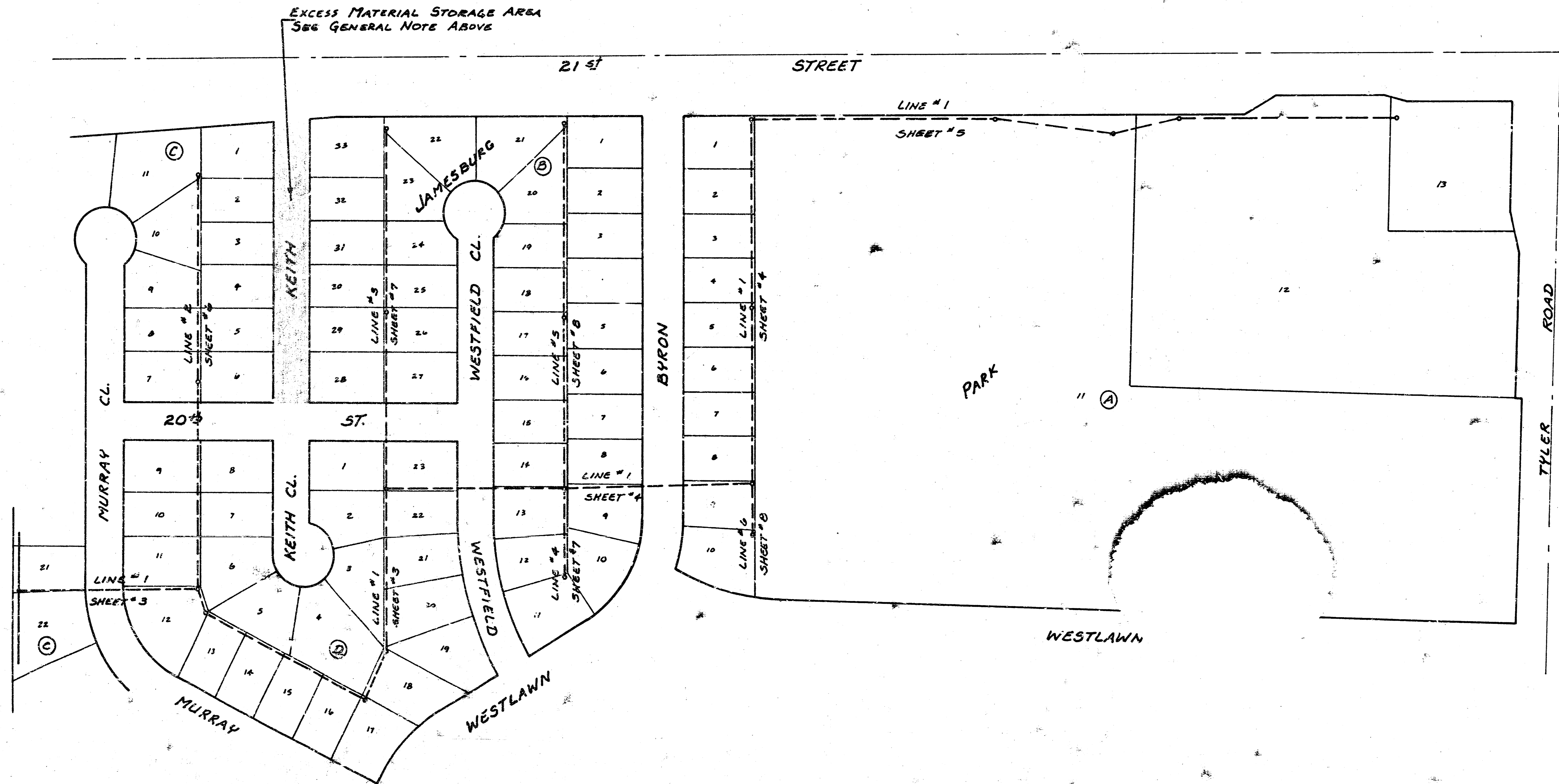
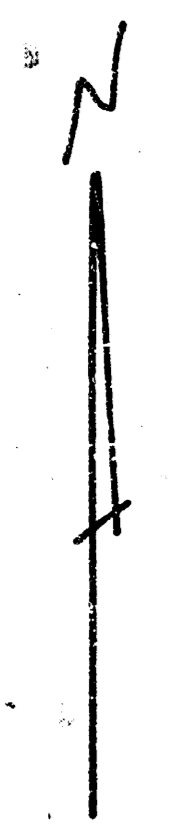
**R. W. BRUGGEMAN
DIRECTOR OF ENGINEERING / CITY ENGINEER**

*As Built
JLL
7-83*

GENERAL NOTE

EXCESS MATERIAL AVAILABLE AFTER CONSTRUCTION OF THE SANITARY SEWER, INCLUDING UNUSED BACKFILL MATERIAL, SHALL BE EITHER STOCKPILED OR STORED IN PROPOSED KEITH AVENUE BETWEEN 20TH AND 21ST STREET. ALL SUCH MATERIAL SHALL BE DUMPED NORTH OF THE NORTH LINE OF 20TH STREET TO FACILITATE CONSTRUCTION OF PROPOSED STORM SEWER IN THE INTERSECTION OF KEITH AVENUE AT 20TH STREET.

EXCESS MATERIAL STORAGE AREA
SEE GENERAL NOTE ABOVE



L 8-20A

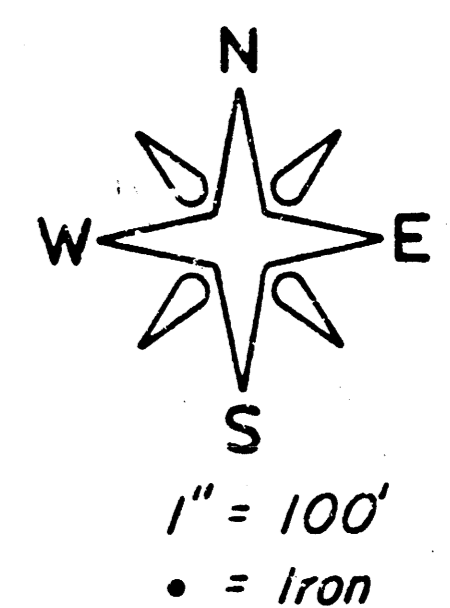
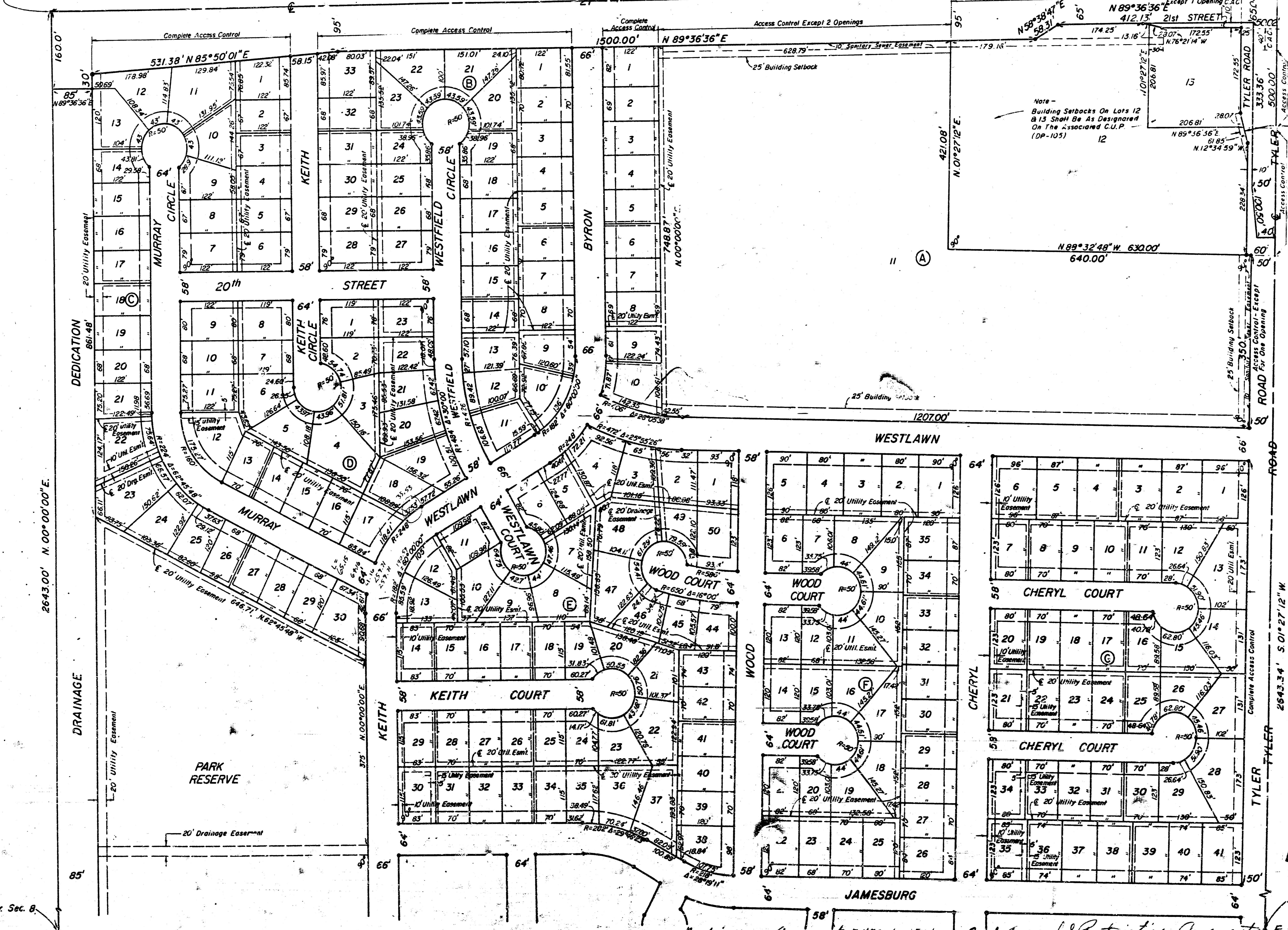
L 8-20A

Only Section 5-37

SHEET 2 OF 8

JAMESBURG PARK AN ADDITION TO WICHITA, SEDGWICK COUNTY, KANSAS

N.W. Cor. NE 1/4, Sec. 8 2628.59' N 89°36'36"E STREET Access Control Except 2 Openings N.E. Cor. Sec. 8, 27, 1W



REFILE #531184

SHEET 1 OF 2 SHEETS

NOTE
 All utility easements are 10' wide except where noted otherwise.
 Front building setbacks are 25'. Street side building setbacks on corner lots are 15'. (Except for Lots 11, 12 and 13 in Block A).

STATE OF KANSAS, COUNTY OF SEDGWICK, SS:
 This is to certify that this Plat was refiled this 25th day of MARCH, 1981, at 9:00 A.M. by Don C. Moehring II, for the purpose of correcting front lot dimension in Lots 16 and 25, Block G, and rear lot dimension in Lot 13, Block C; together with revised Utility Easement in Lots 8 and 9, Block A; Lots 8, 9, 13 and 14, Block B; Lots 21 and 22, Block C; Lots 12, 22 and 23, Block D; Lot 30, Block E; Lots 21, 34 and 35, Block G; Lot 7 Block H; Lot 8 Block J; Lots 14 and 15, Block K.

Bette F. McCurt Register of Deeds

Pat Keiler Deputy
 Pat Keiler

LAT 2, MAIN 4, WESTLINK SEWER
468-76-245-80980-899-300-001

S.E. Cor. NE 1/4, Sec. 8

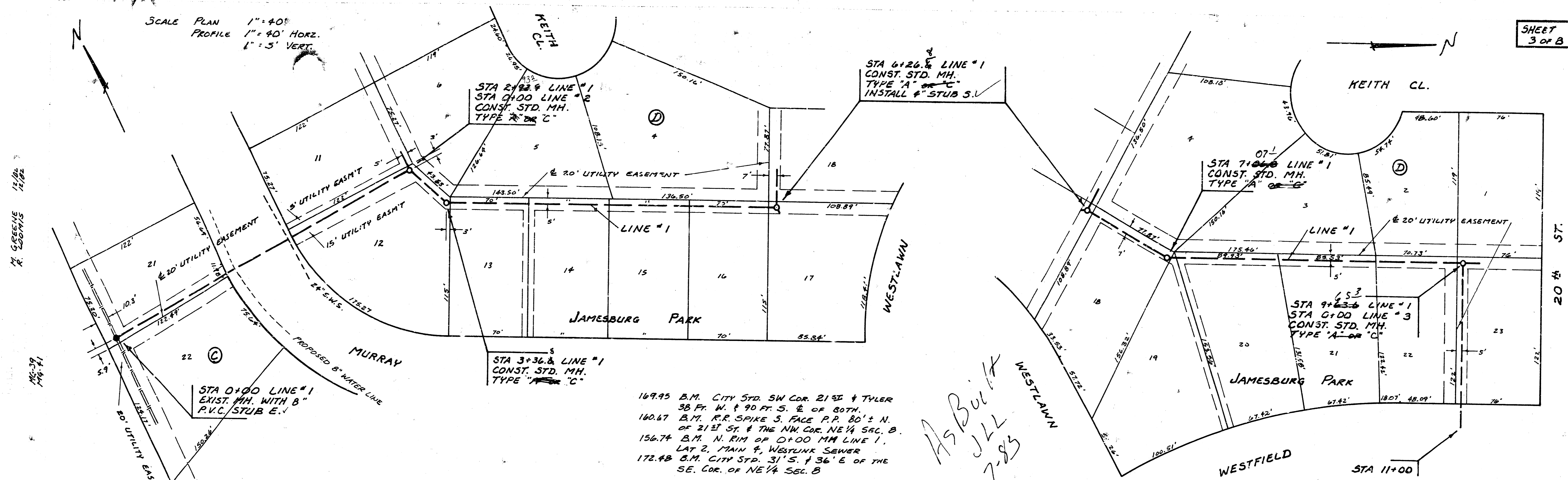
35.00 REFILE 35.00

Restrictive Covenant F 470 pg. 1514
 Restrictive Covenant F 432 pg. 36
 Restrictive Covenant F 455 pg. 1623

2nd Amended Restrictive Covenant F 475 pg. 1547

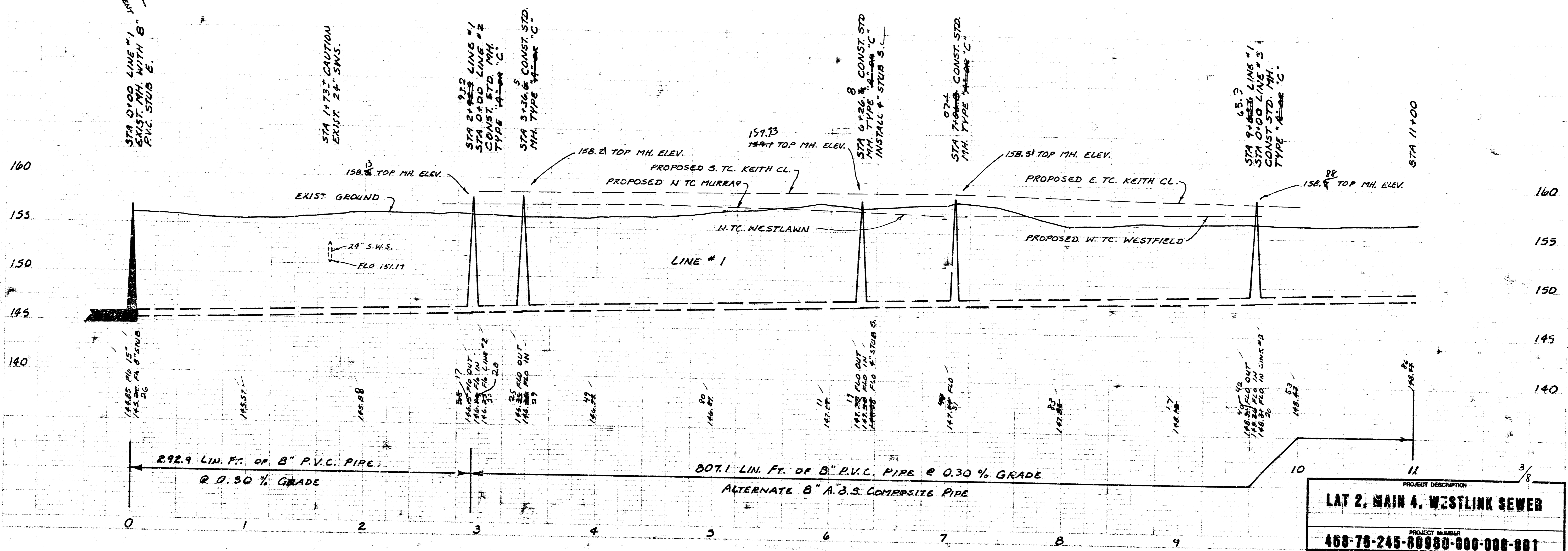
8 10 3 SE L 8-20A

SCALE PLAN 1" = 40'
 PROFILE 1" = 40' HORIZ.
 1" = 5' VERT.



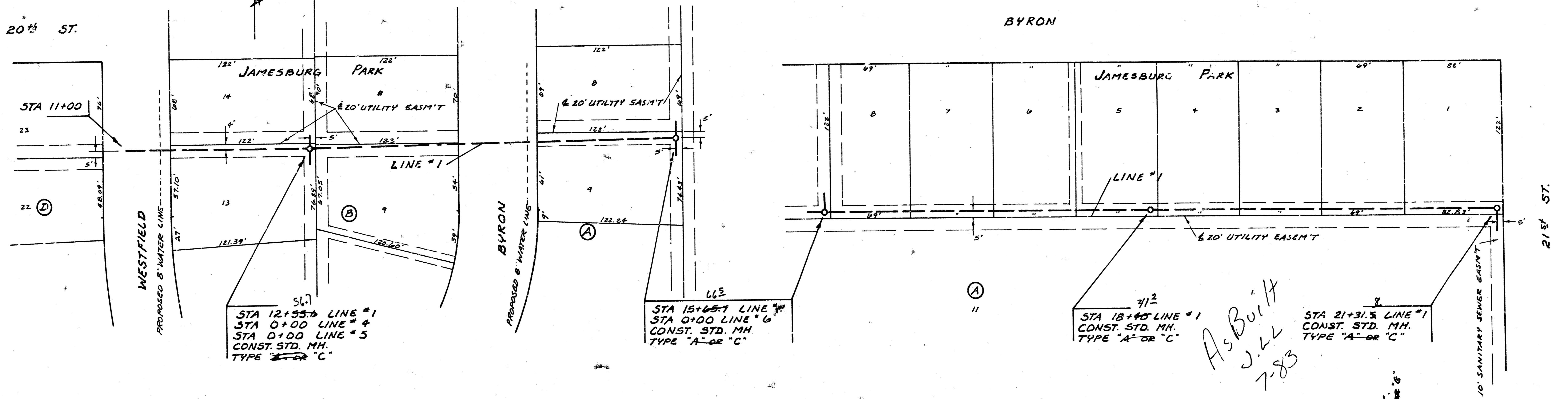
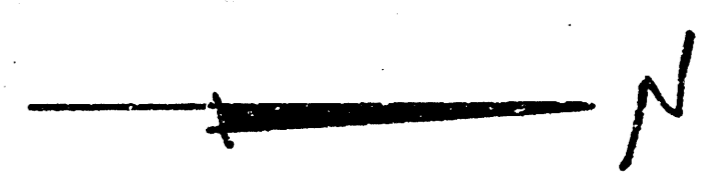
169.95 B.M. CITY STD. SW COR. 21ST & TYLER
 38 FT. W. & 90 FT. S. E. OF BOTH.
 140.67 B.M. R.R. SPIKE S. FACE P.P. 80' ± N.
 OF 21ST ST. & THE NW COR. NE 1/4 SEC. B.
 156.74 B.M. N. RIM OF 0+00 MM LINE 1.
 LAT 2, MAIN 4, WESTLINK SEWER
 172.48 B.M. CITY STD. 31' S. & 36' E. OF THE
 SE. COR. OF NE 1/4 SEC. B

*As Built
 JLL
 7-83*



PROJECT DESCRIPTION	
LAT 2, MAIN 4, WESTLINK SEWER	
PROJECT NUMBER	
468-76-245-80980-000-008-001	

SCALE PLAN 1" = 40'
 PROFILE 1" = 40' HORIZ.
 1" = 5' VERT.



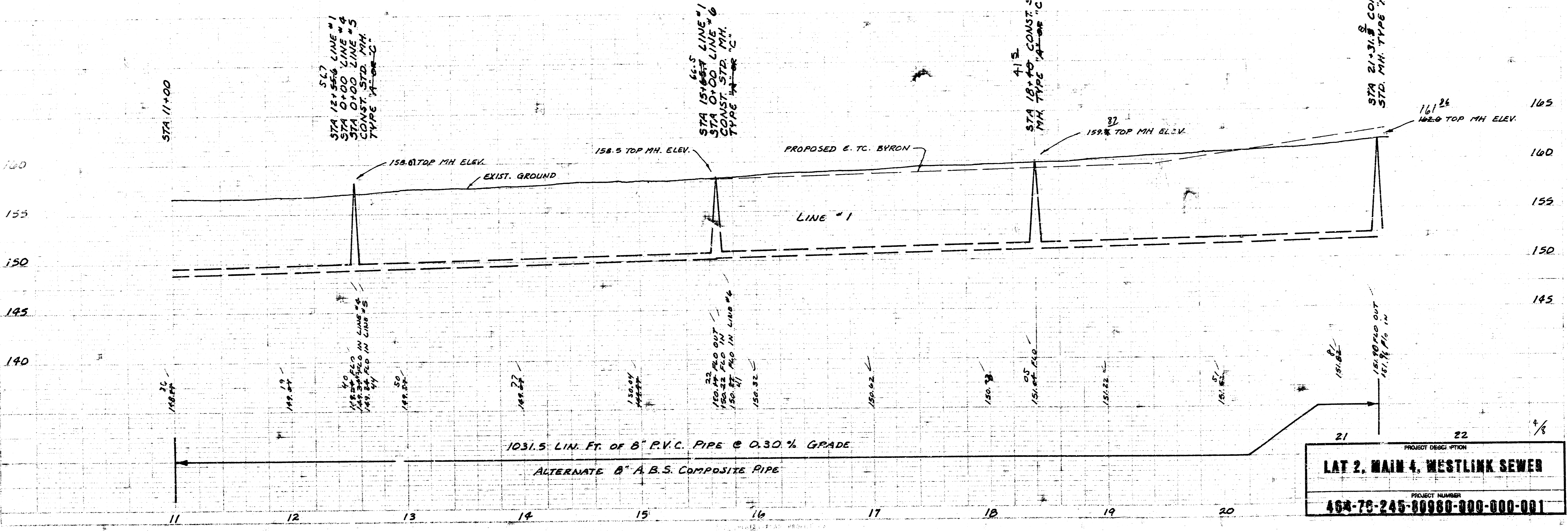
56.7
 STA 12+53.6 LINE #1
 STA 0+00 LINE #4
 STA 0+00 LINE #5
 CONST. STD. MH.
 TYPE "A" OR "C"

66.5
 STA 15+65.7 LINE #1
 STA 0+00 LINE #6
 CONST. STD. MH.
 TYPE "A" OR "C"

71.2
 STA 18+40 LINE #1
 CONST. STD. MH.
 TYPE "A" OR "C"

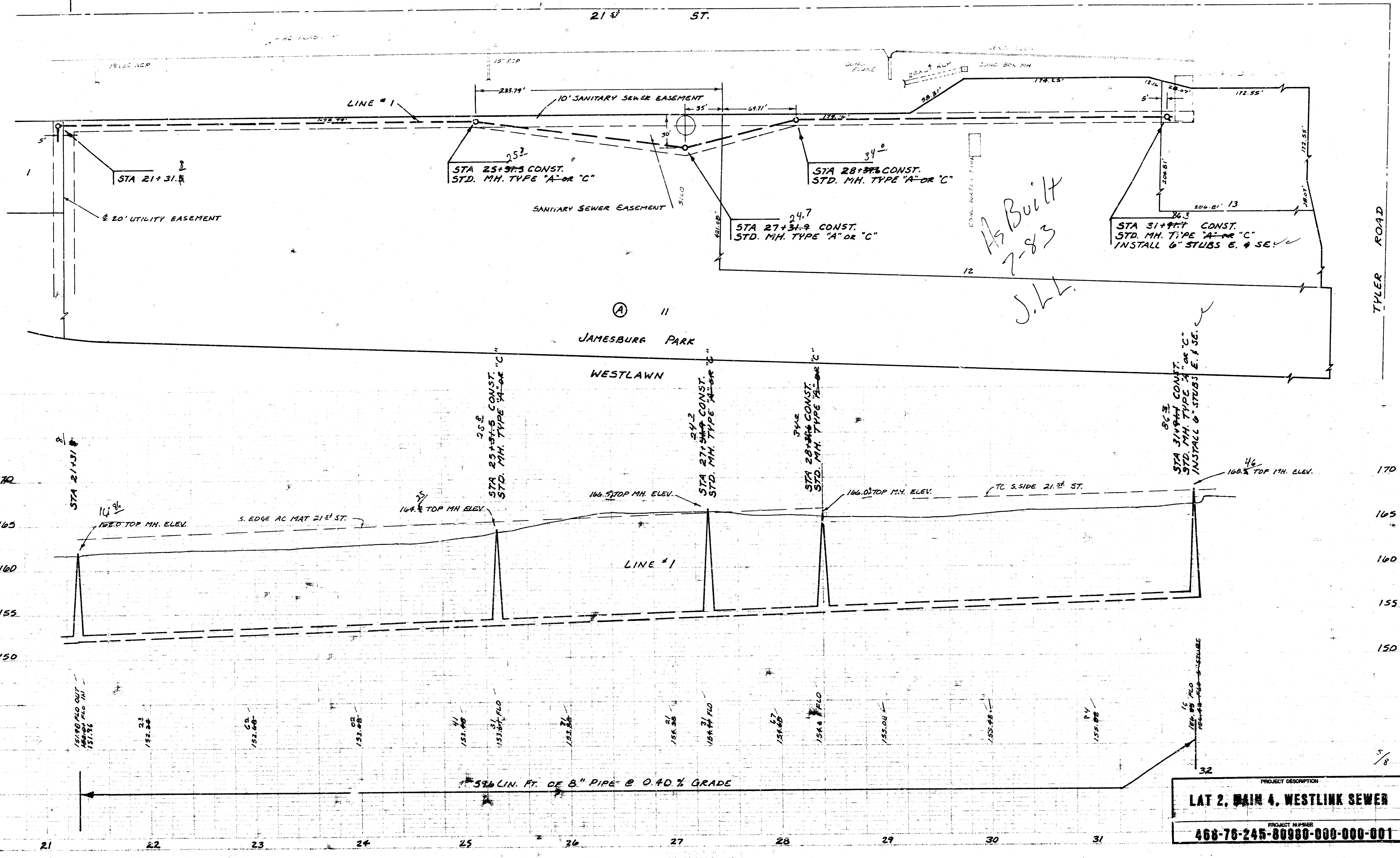
8
 STA 21+31.8 LINE #1
 CONST. STD. MH.
 TYPE "A" OR "C"

As Built
J.L.L.
7-83



PROJECT DESCRIPTION	
LAT 2. MAIN 4, WESTLINK SEWER	
PROJECT NUMBER	
454-78-245-80980-000-001	

SCALE PLAN 1" = 40'
 PROFILE 1" = 40' HORIZ.
 1" = 5' VERT.

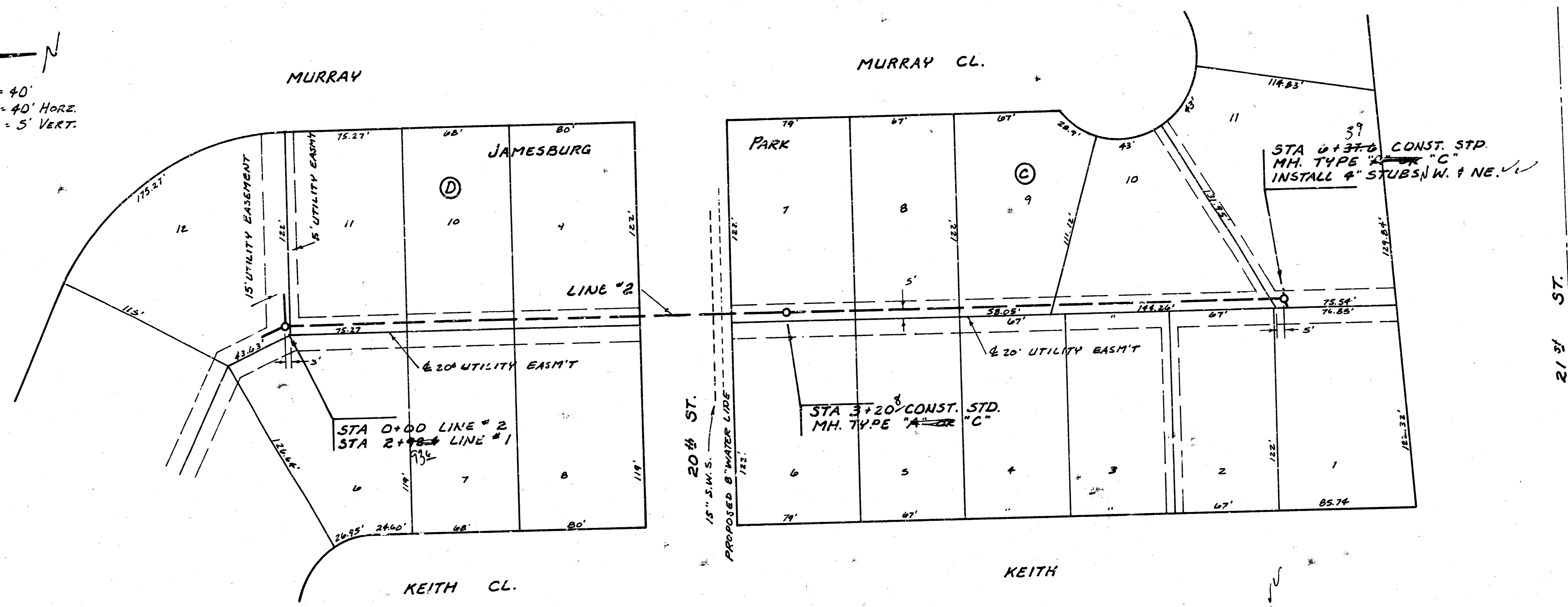


PROJECT DESCRIPTION
LAT 2, MAIN 4, WESTLINK SEWER

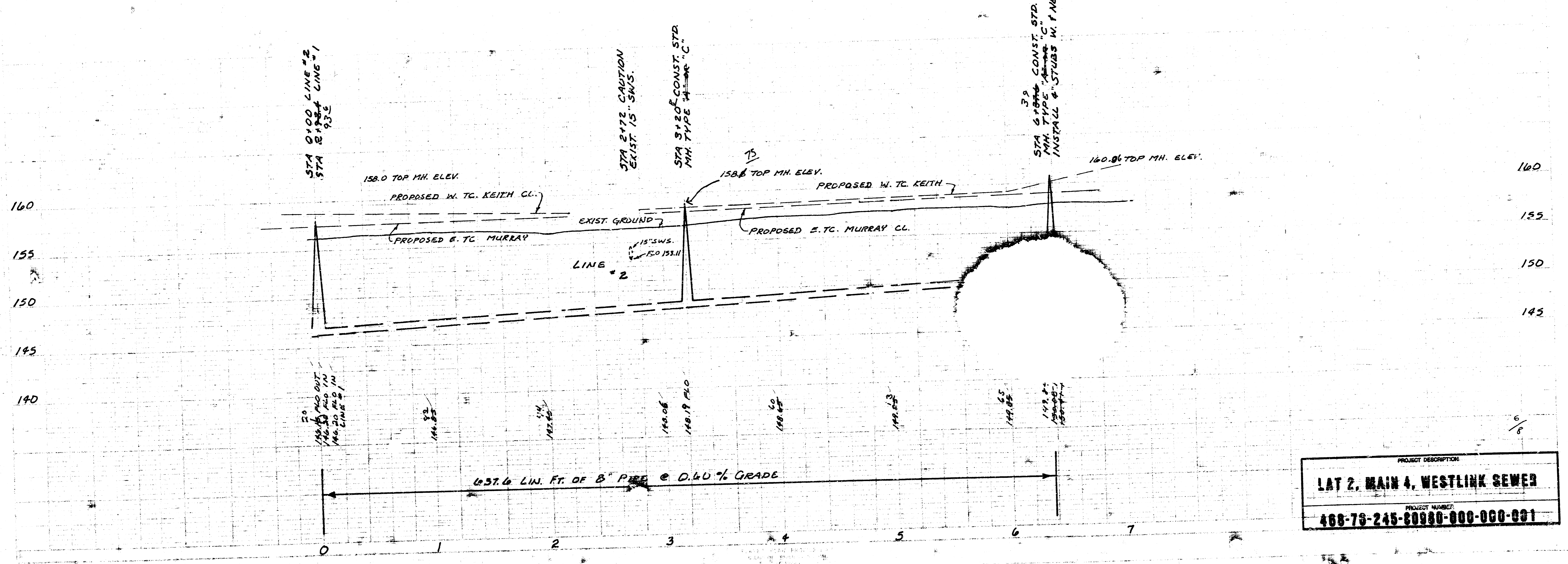
PROJECT NUMBER
468-76-245-80980-000-000-001

5/8

SCALE PLAN 1" = 40'
PROFILE 1" = 40' HORIZ.
1" = 5' VERT.

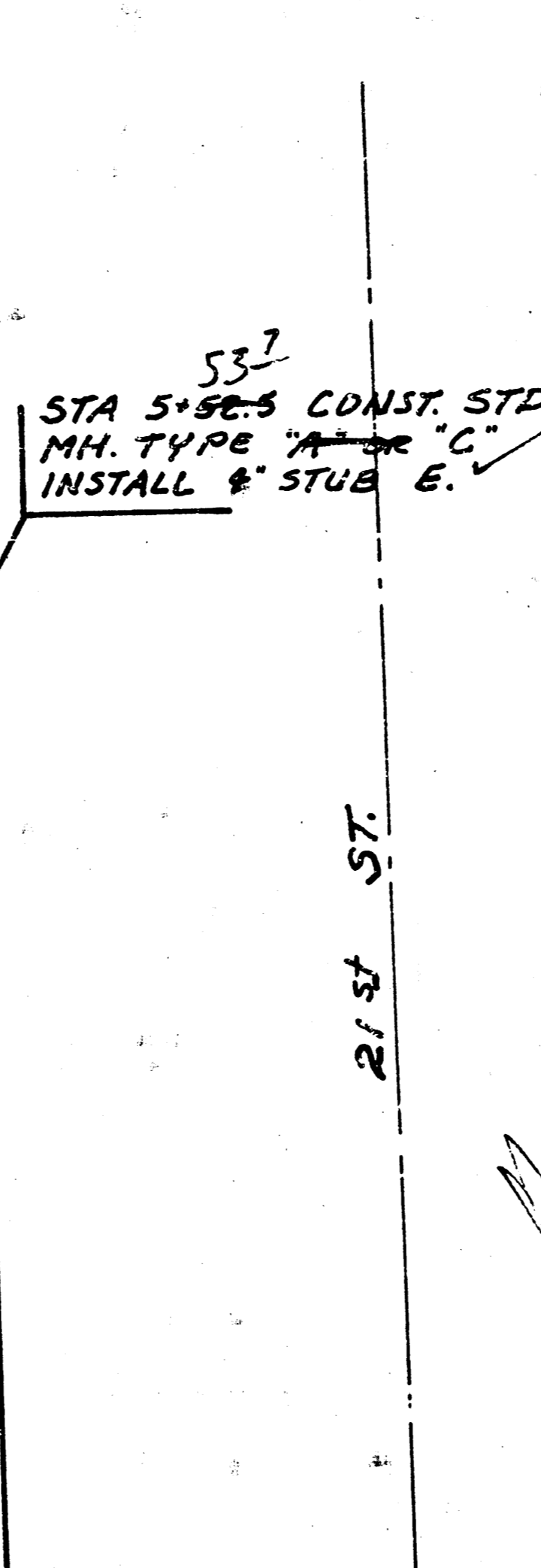
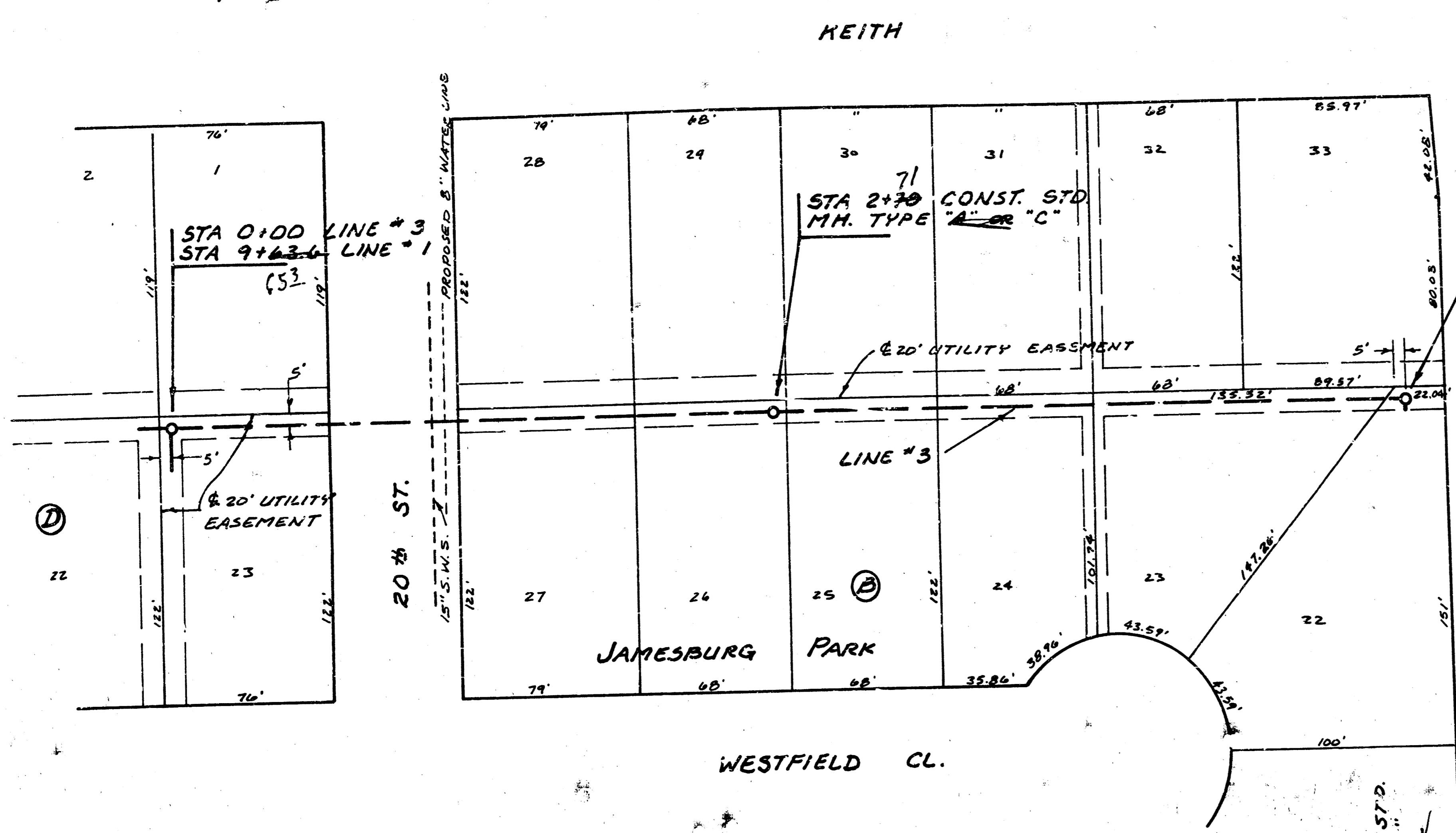
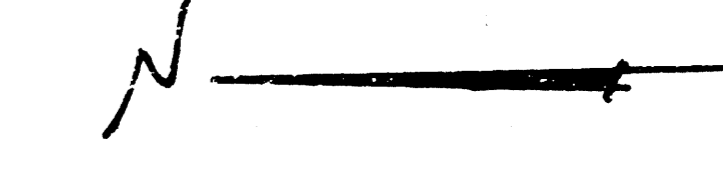


As Built
7-83
J.L.L.

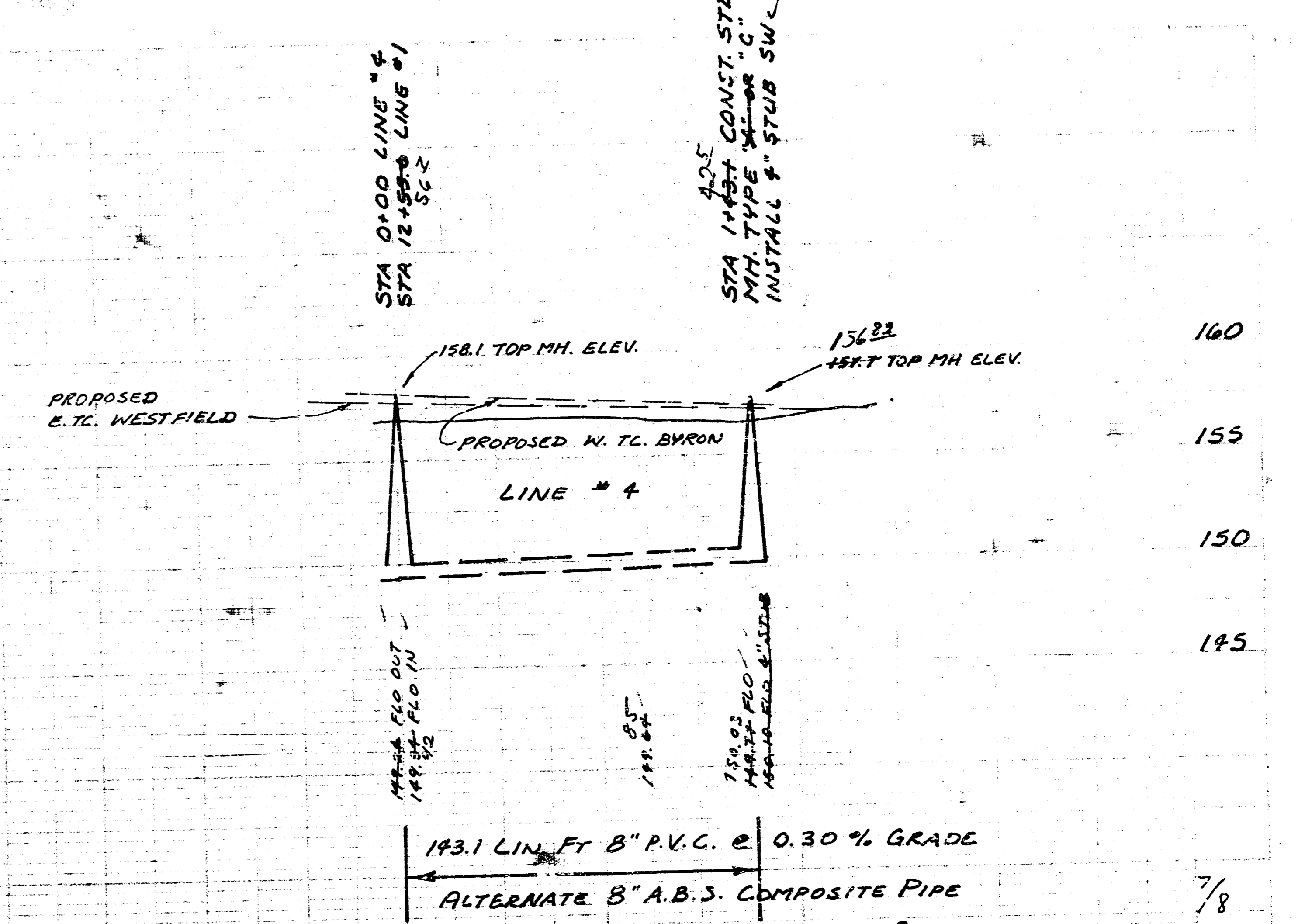
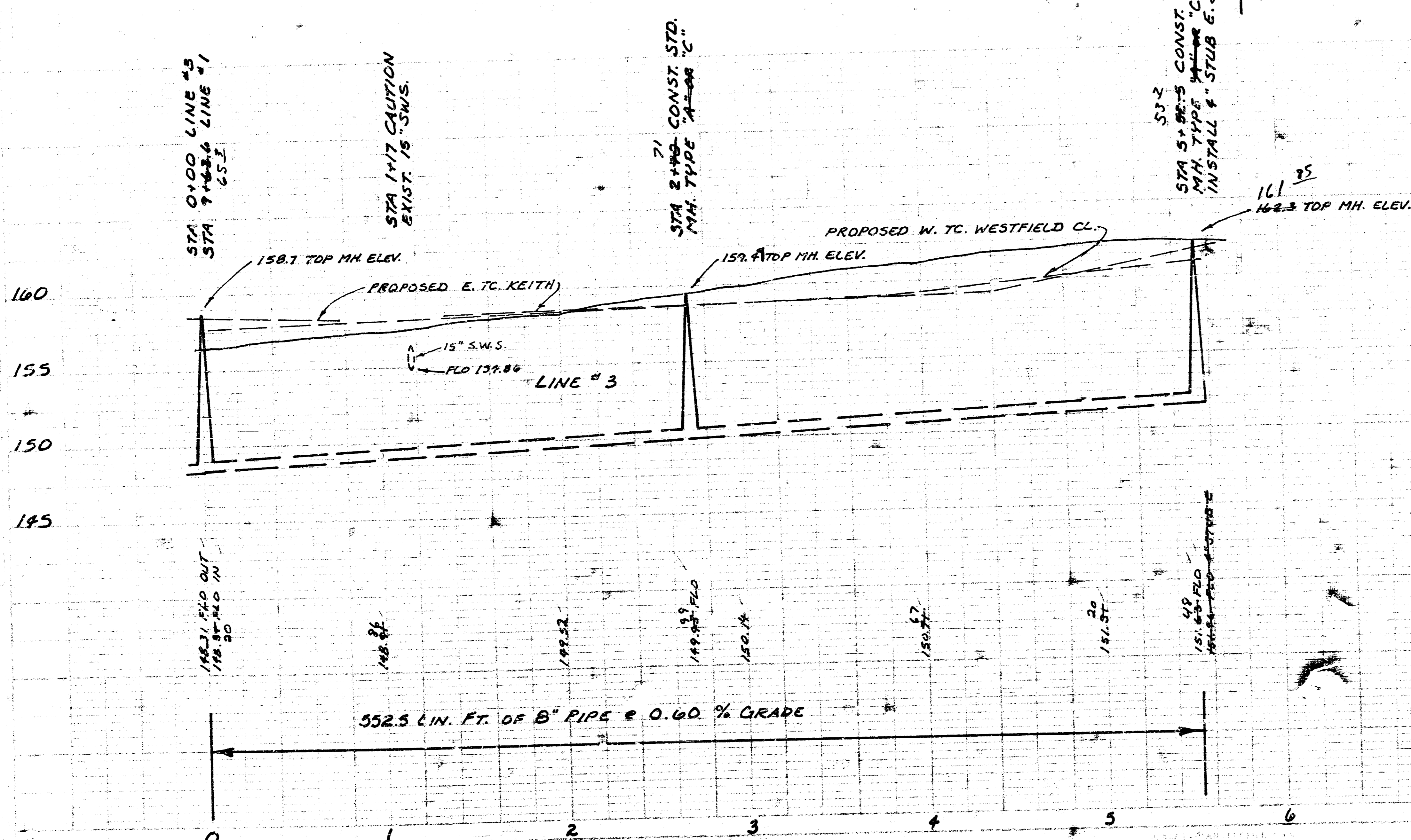
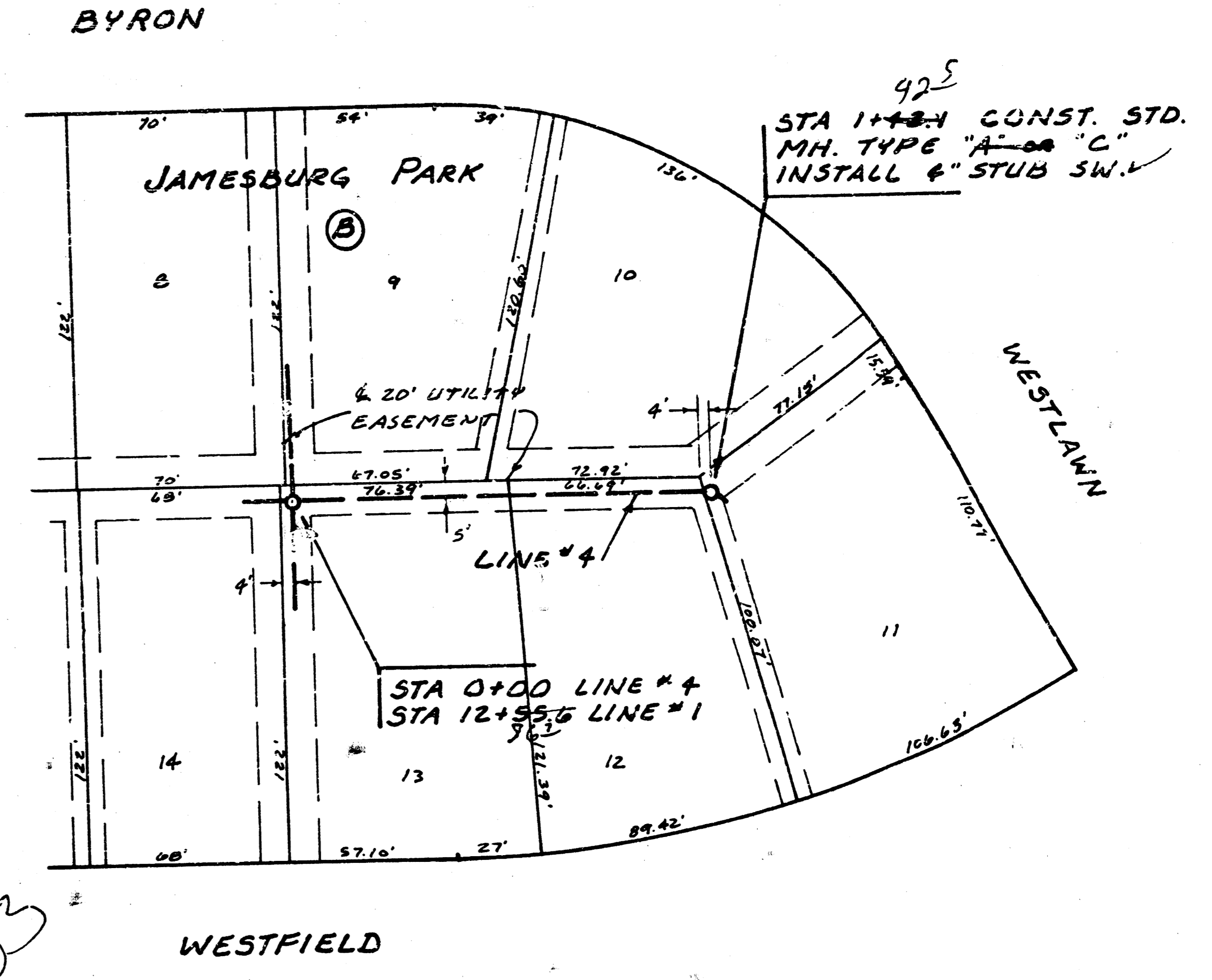


PROJECT DESCRIPTION
LAT 2, MAIN 4, WESTLINK SEWER
PROJECT NUMBER
468-78-245-69980-000-001

SCALE PLAN 1" = 40'
 PROFILE 1" = 40' HORIZ.
 1" = 5' VERT.

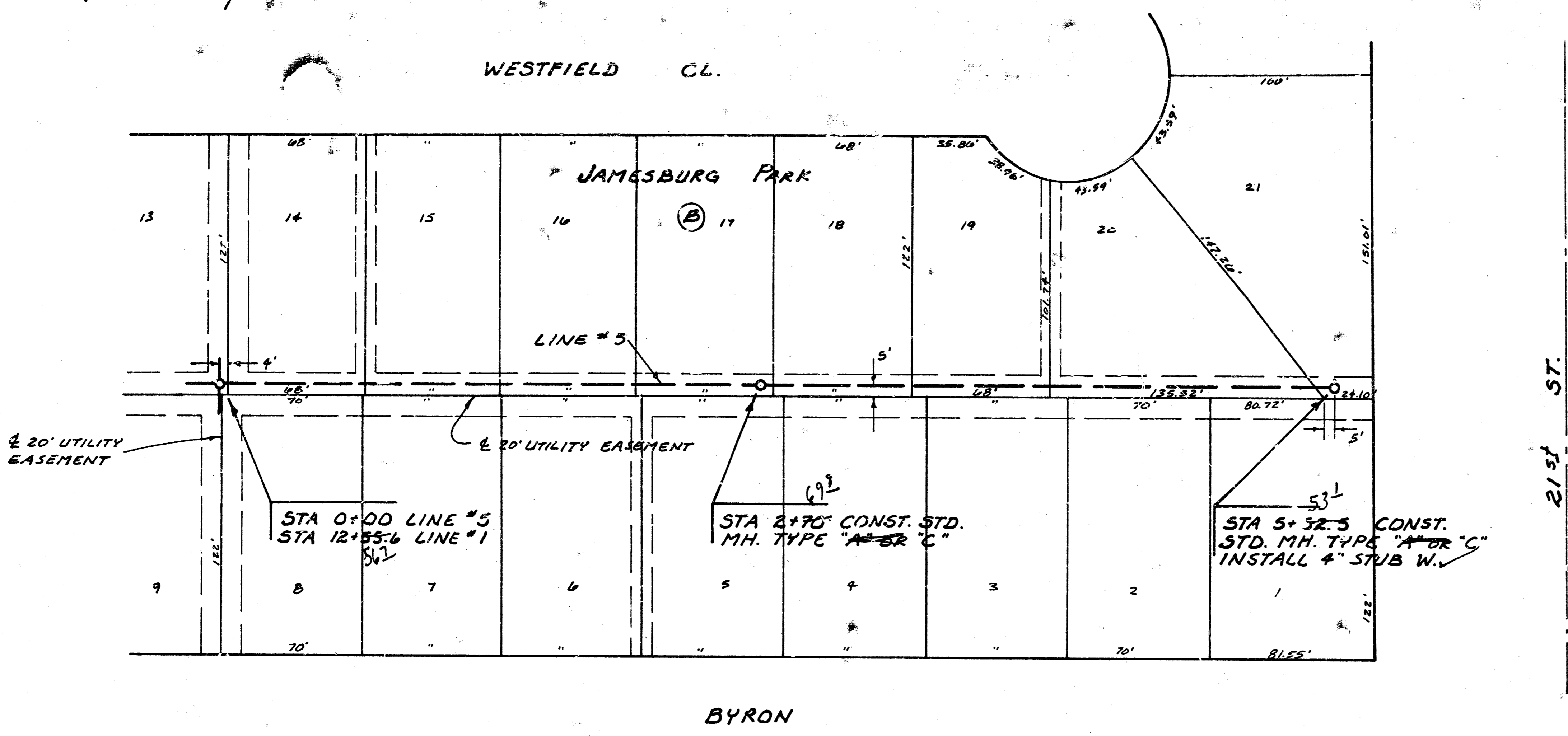


*As Built
 J.L.L.
 7-83*

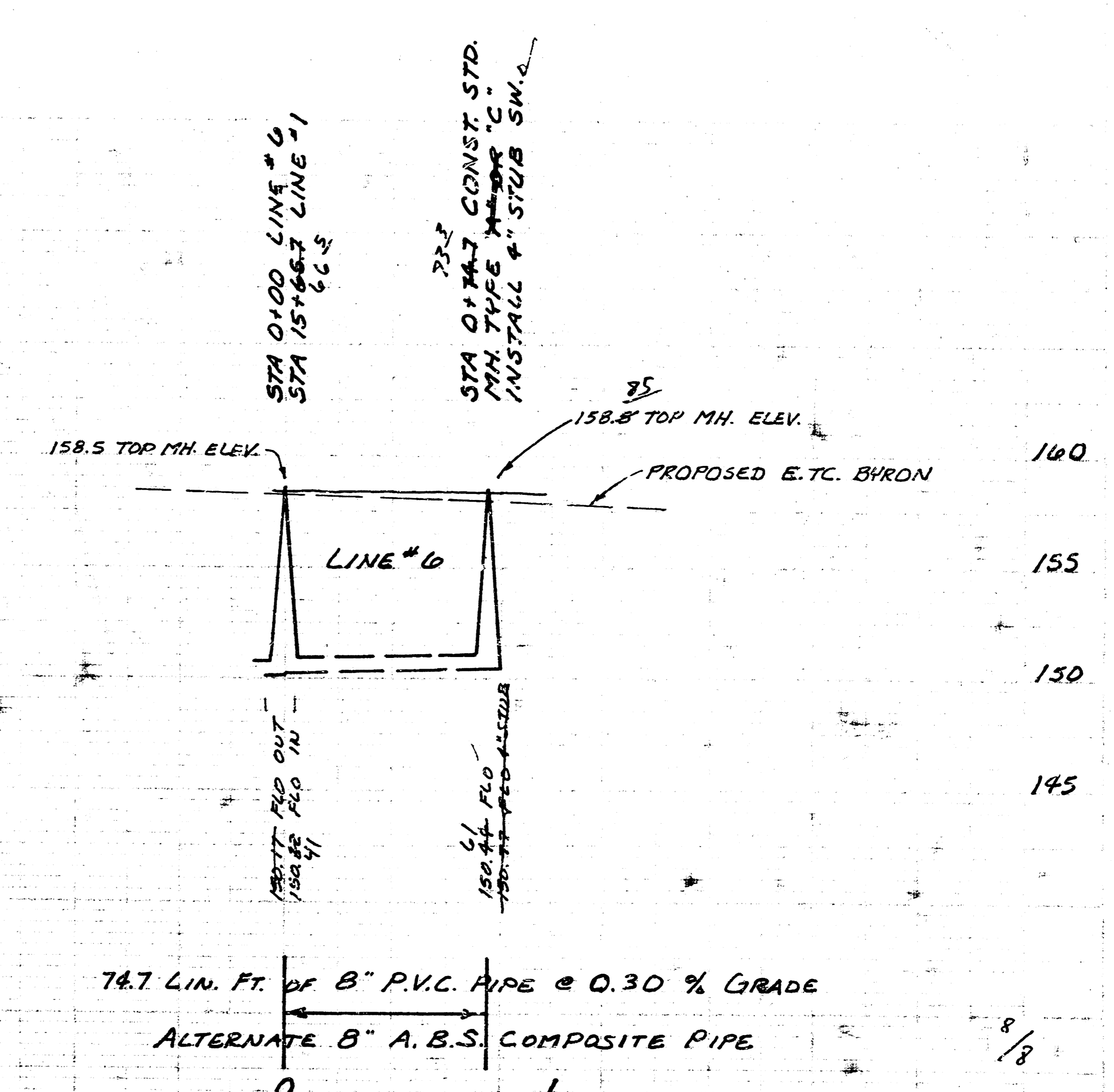
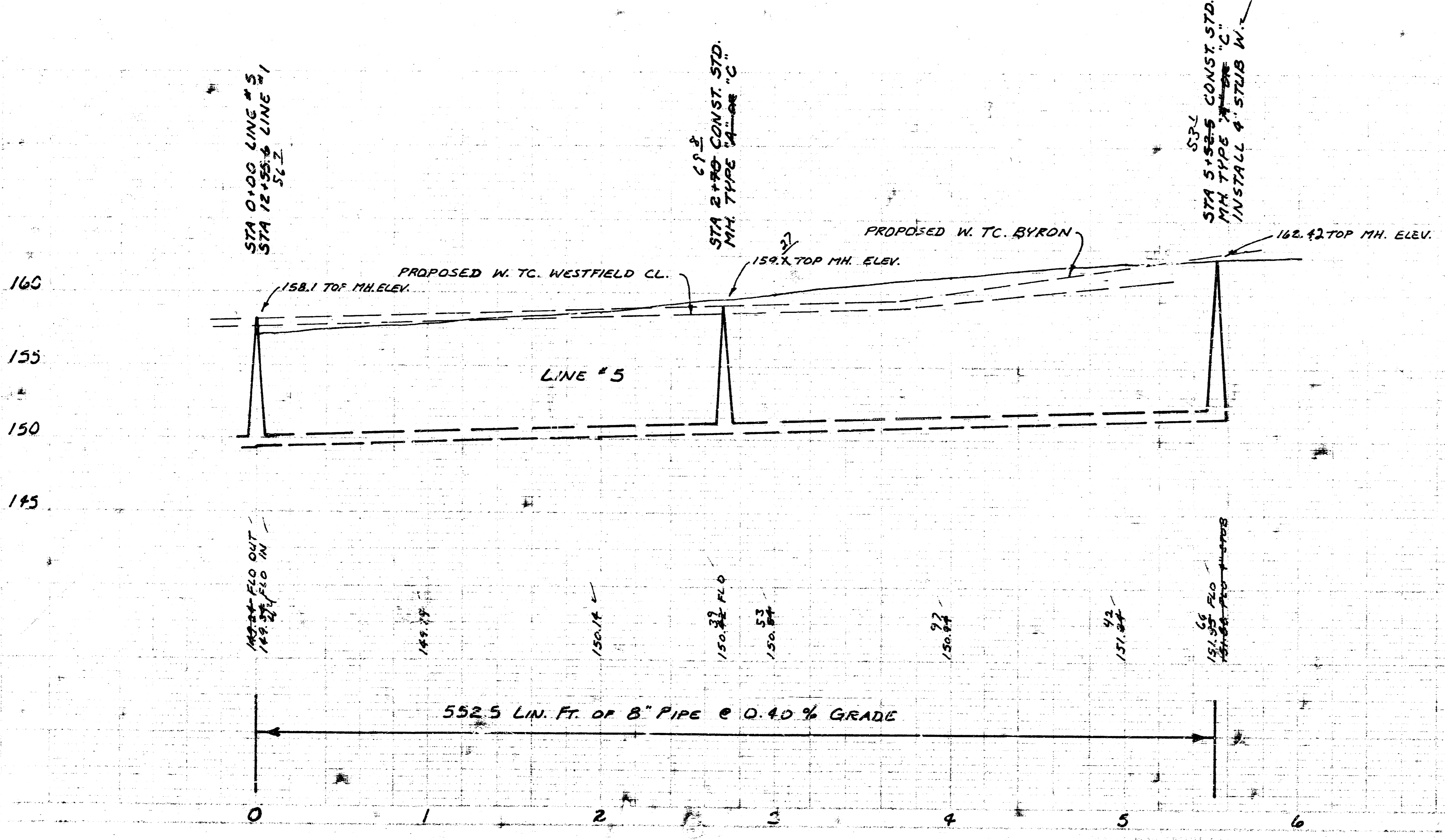
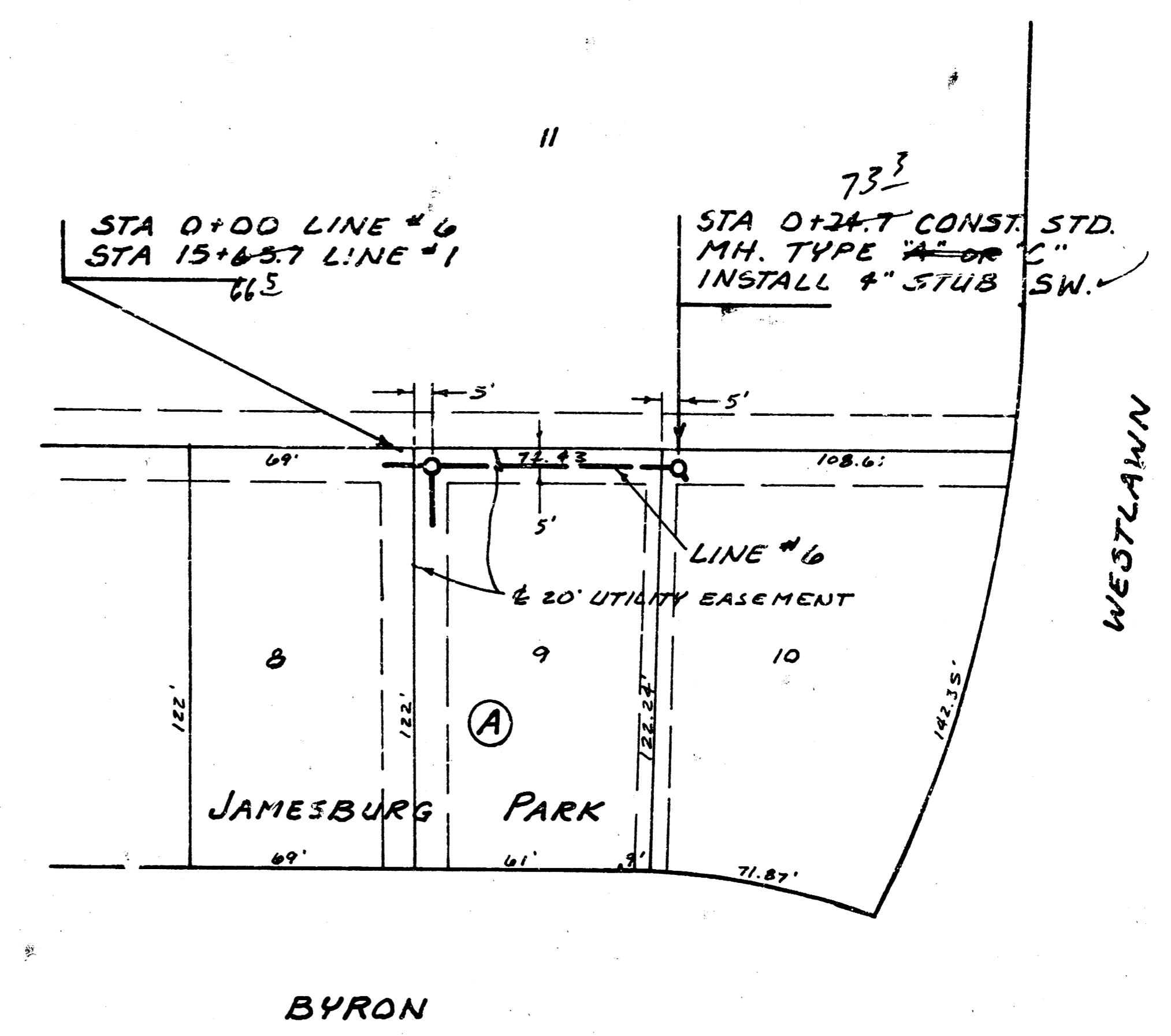


PROJECT DESCRIPTION
LAT 2, MAIN & WESTLINK SEWER
 PROJECT NUMBER
488-76-245-83960-000-001

SCALE PLAN 1" = 40'
PROFILE 1" = 40' HORIZ.
1" = 5' VERT.



As Built
JLL
7-83



PROJECT DESCRIPTION
LAT 2, MAIN 4, WESTLINK SEWER
PROJECT NUMBER
468-78-245-80980-000-000-001
10 5 4 12