

LATERAL 121 - WESTLINK SEWER

SANITARY SEWER IMPROVEMENTS TO SERVE PARK WEST PLAZA ADDITION

468-76-245-82547-000-000-001

CITY OF WICHITA, KANSAS

Michael E. Lindebak, City Engineer

Index Code: 742551

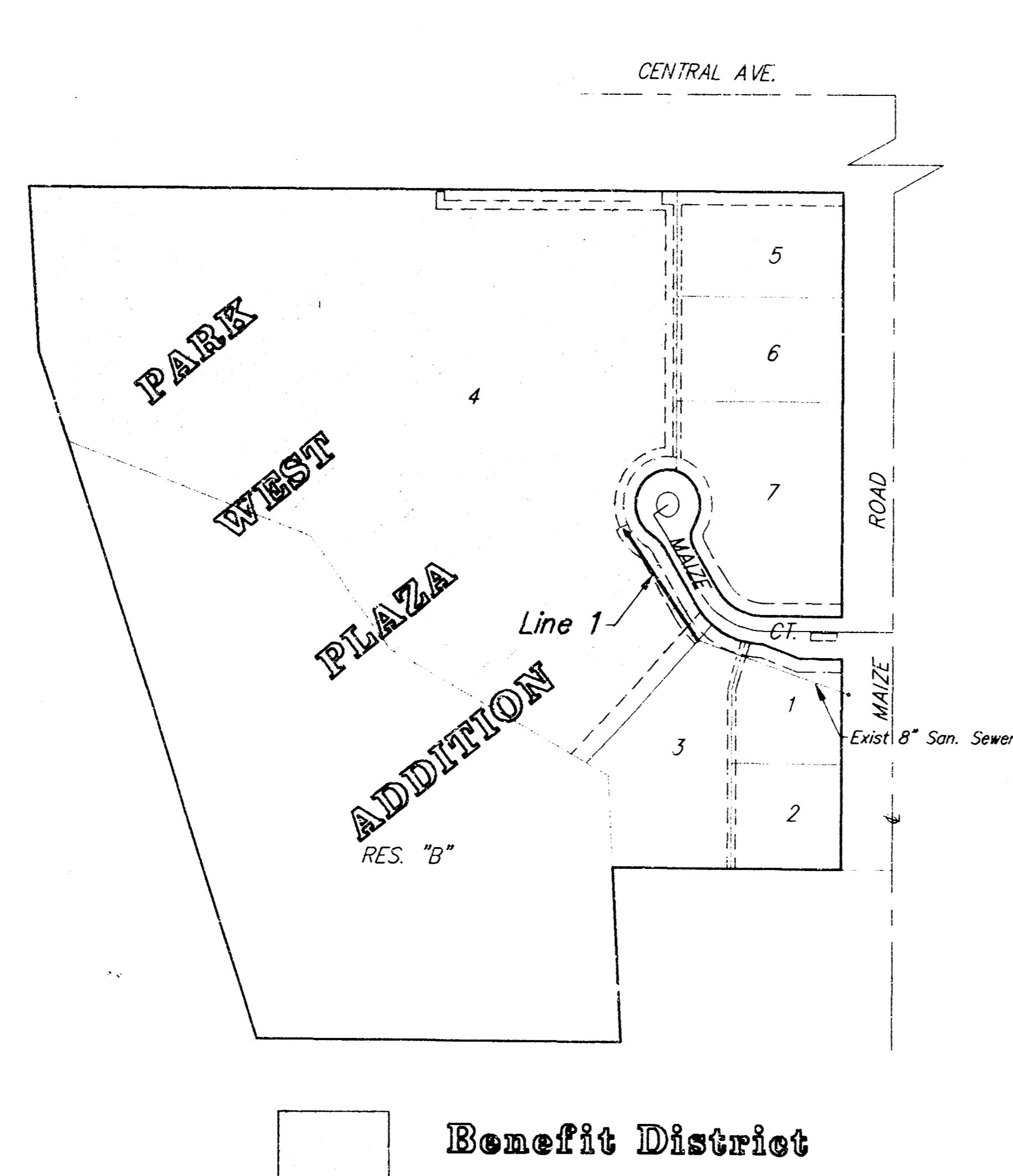
GENERAL NOTES:

- Contractor will provide notice to utility companies a minimum of twenty-four (24) hours prior to any excavation, as follows:

Kansas One-Call	687-2470
-----------------	----------

The Contractor must notify the following in case of an emergency:

Cablevision	262-4270
or	263-2061
K.G.E. Gas Service Company	383-8650
Kansas Gas & Electric Company	383-8600
Peoples Natural Gas Company	942-8350
Southwestern Bell Telephone Company	1-571-2611
City of Wichita Water Department	268-4908
City of Wichita Sewer Maintenance	268-4071
- Underground utility service lines and overhead utility pole lines are to be adjusted as necessary by others prior to construction unless the plans specifically call for their adjustment by the Contractor or unless the plans specifically identify a utility to be adjusted by its owner during construction. Existing utilities and their location, as shown on the plans, represent the best information obtainable for design. The Contractor will be required to work around existing utilities within the right-of-way which do not conflict with proposed construction.
- Properties within the project limits may have underground sprinkler systems in public right-of-way which conflict with new construction. Contractor will be required to remove such improvements should they not be removed by their owner at the time of construction of the project. The Contractor will be required to salvage all sprinkler heads and/or valves and give such material to their owner. Portions of underground sprinkler systems not in conflict with new construction shall be protected from damage and shall remain in place. All work in connection with underground sprinkler systems shall be considered as subsidiary to the contract pay items of work.
- The Contractor shall notify pipeline companies at least 24 hours in advance of any work being performed across and/or adjacent to pipelines.
- Trees and shrubs in public right-of-way which are in direct conflict with proposed new construction shall be removed by the Contractor with the Engineer's approval. Trees and shrubs which are not in direct conflict with proposed new construction shall be saved and protected from damage.
- The Contractor shall give all property owners and/or tenants of developed property abutting the construction of this project a minimum of ten (10) days advance notice prior to start of construction.
- The Contractor shall be responsible for maintaining continuous flow of sewage during construction. Contractor's proposed means for maintaining sewage flow shall be approved by the Engineer. Cost of maintaining flow of sewage through construction will not be paid for directly and this cost shall be considered as subsidiary to the other pay items of work.
- The Contractor shall be responsible for preserving property irons. The Contractor will be required to re-establish any property irons which are damaged or destroyed by his construction operations. Such irons shall be re-established by a licensed land surveyor in accordance with state laws.
- All areas disturbed by construction operations shall be seeded with rye grass at a rate of 2 lbs per 1000 sq. feet. Contractor to prepare ground to City specifications prior to seeding.



Scale: 1" = 150'

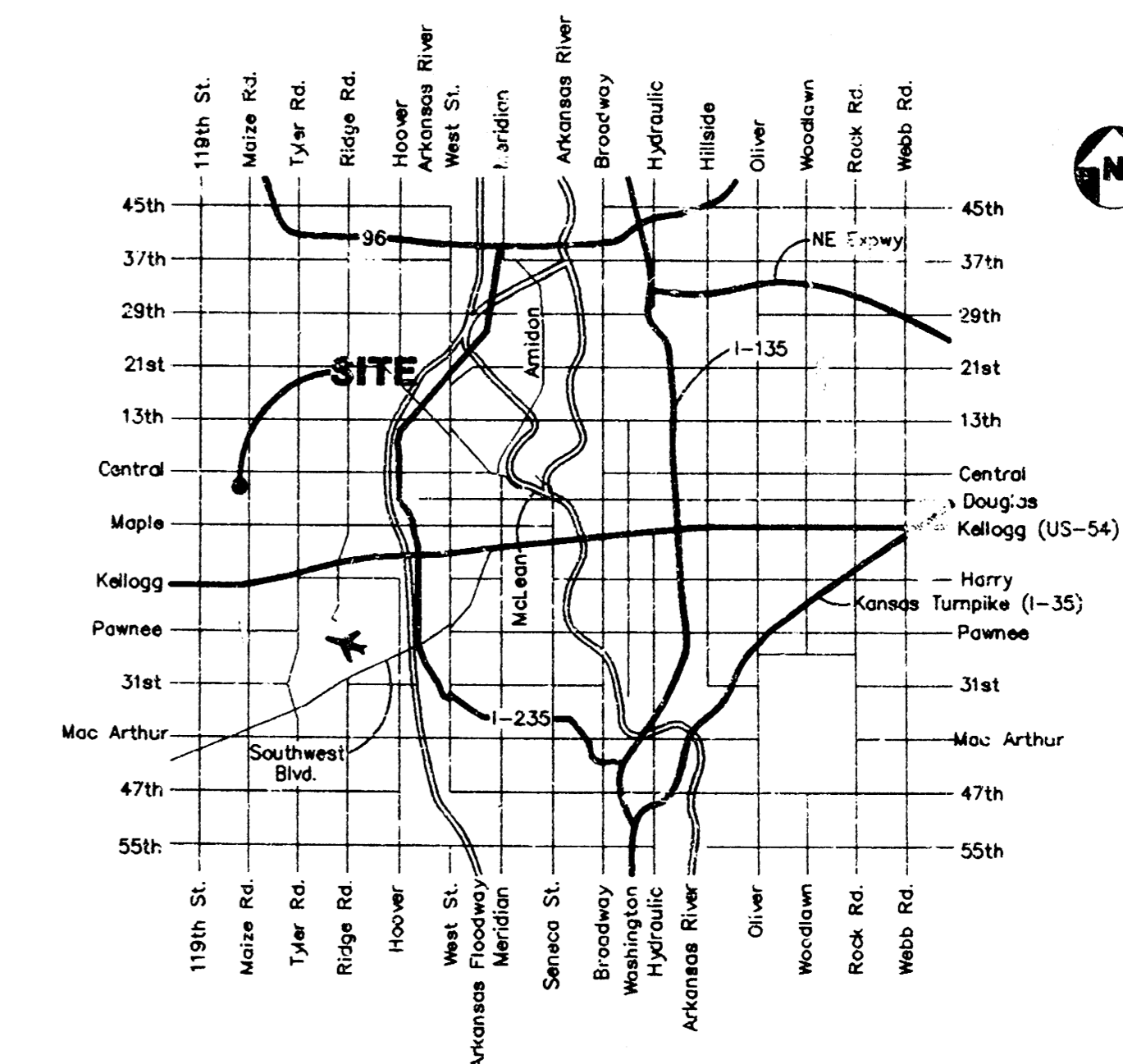
Benchmark:

"□" Cut top of curb at the back of cul-de-sac, Maize Court. Elev. = 136.74

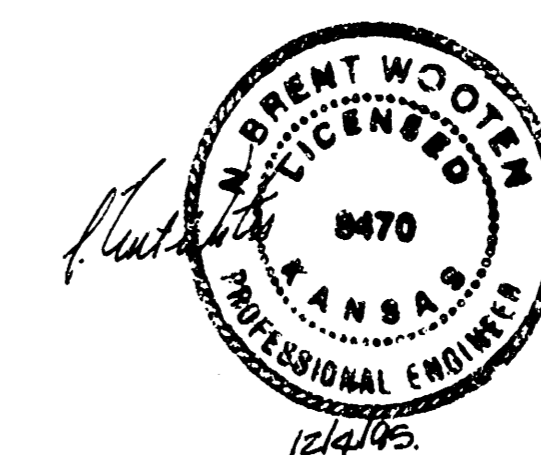
"□" Cut on the top of curb at the south end of return at SE corner of Hardtner and Maize Road. Elev. = 134.50

INDEX:

- Title Sheet
- Line 1 Plan/Profile
- Standard Manhole Detail
- Manhole Frame & Cover Detail
- Copy of Park West Plaza Addition Plat



SITE LOCATION MAP

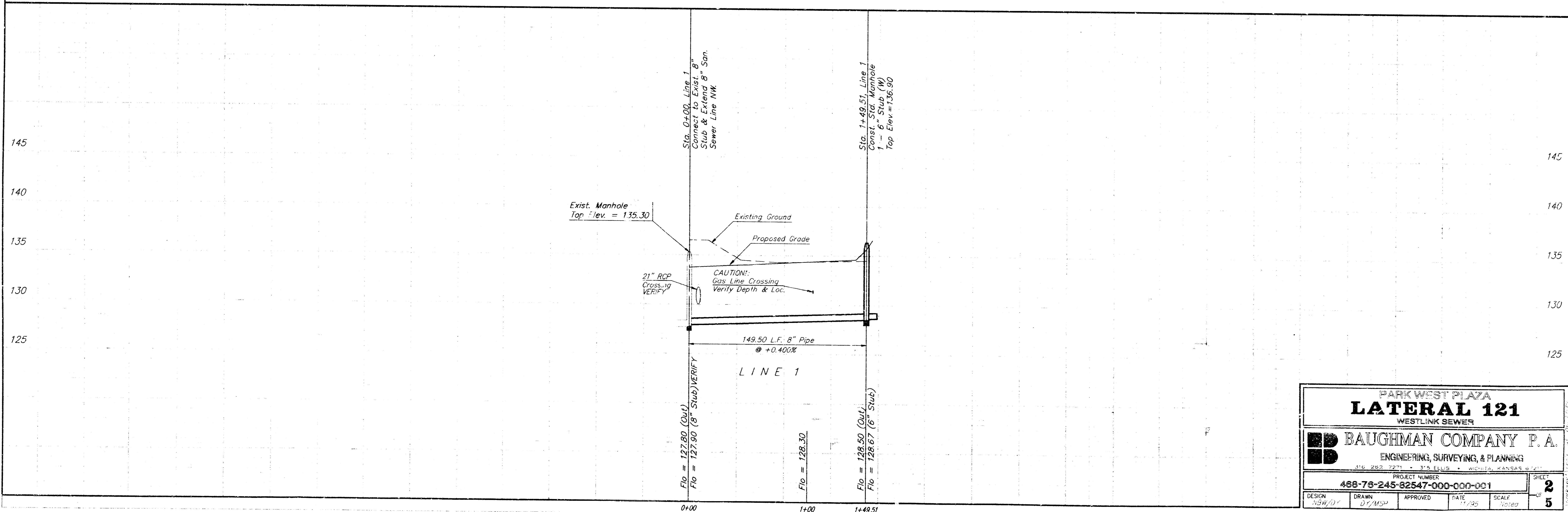
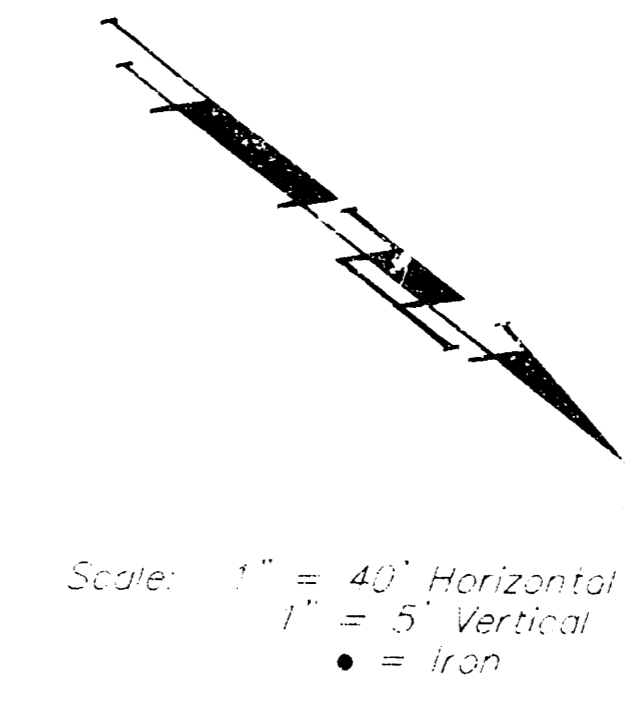
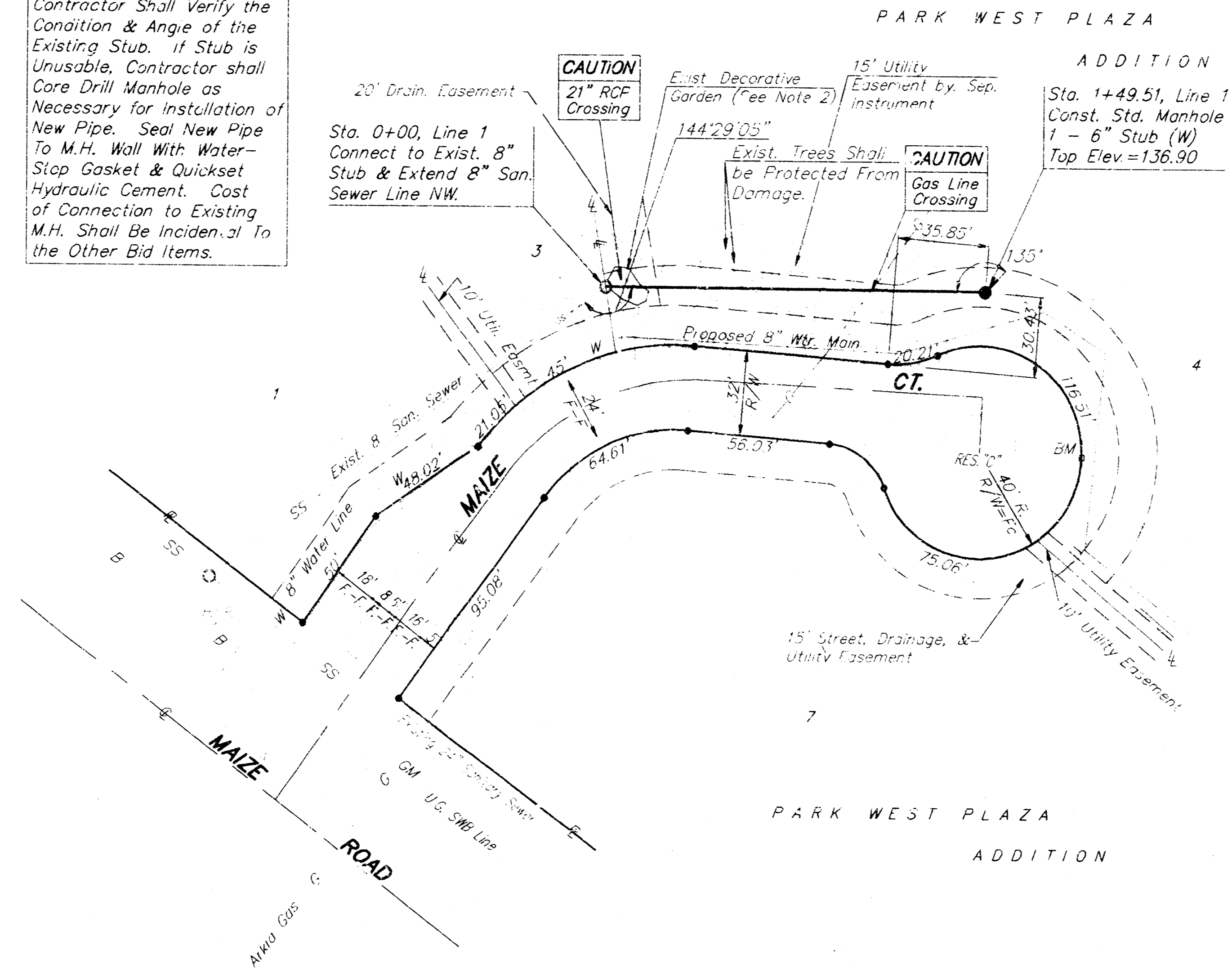


BAUGHMAN COMPANY P. A.
ENGINEERING, SURVEYING, & PLANNING
316 262-7271 • 312 E. LUS • WICHITA, KANSAS 67211

Benchmark:
 "□" Cut top of curb at the back of curb-de-sac, Maize Court. Elev. = 136.74
 "U" Cut on the top of curb at the South end of return at SE corner of Hardner and Maize Road. Elev. = 134.90

NOTE 1
 Contractor Shall Verify the Condition & Angle of the Existing Stub, if Stub is Unusable, Contractor shall Core Drill Manhole as Necessary for Installation of New Pipe. Seal New Pipe To M.H. Wall With Water-Stop Gasket & Quikset Hydraulic Cement. Cost of Connection to Existing M.H. Shall Be Incidental To the Other Bid Items.

NOTE 2
 Contractor Shall Salvage Decorative Rock, Shrubs, & Soil From Decorative Garden & Restore Items To Existing Configuration Following Construction.

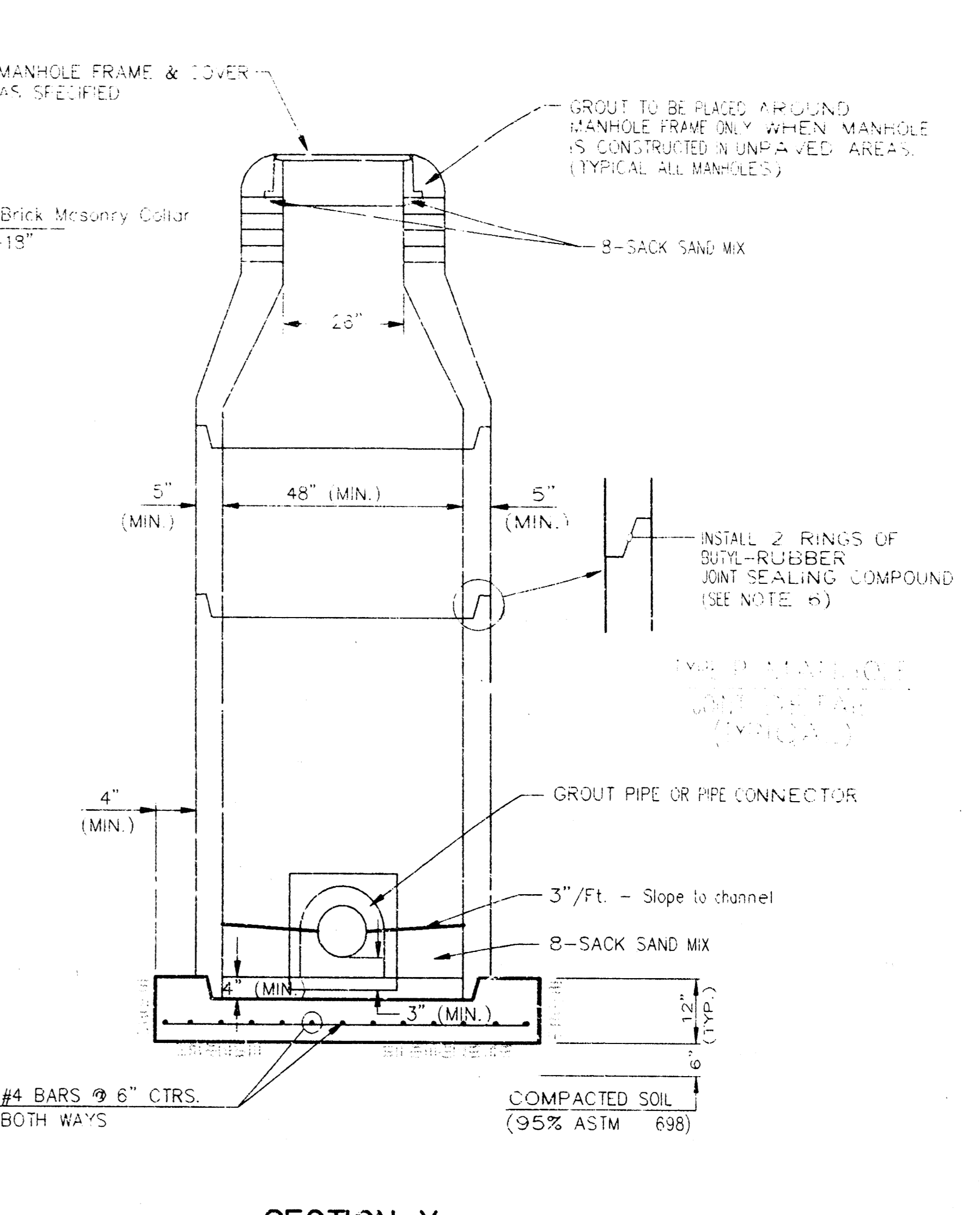
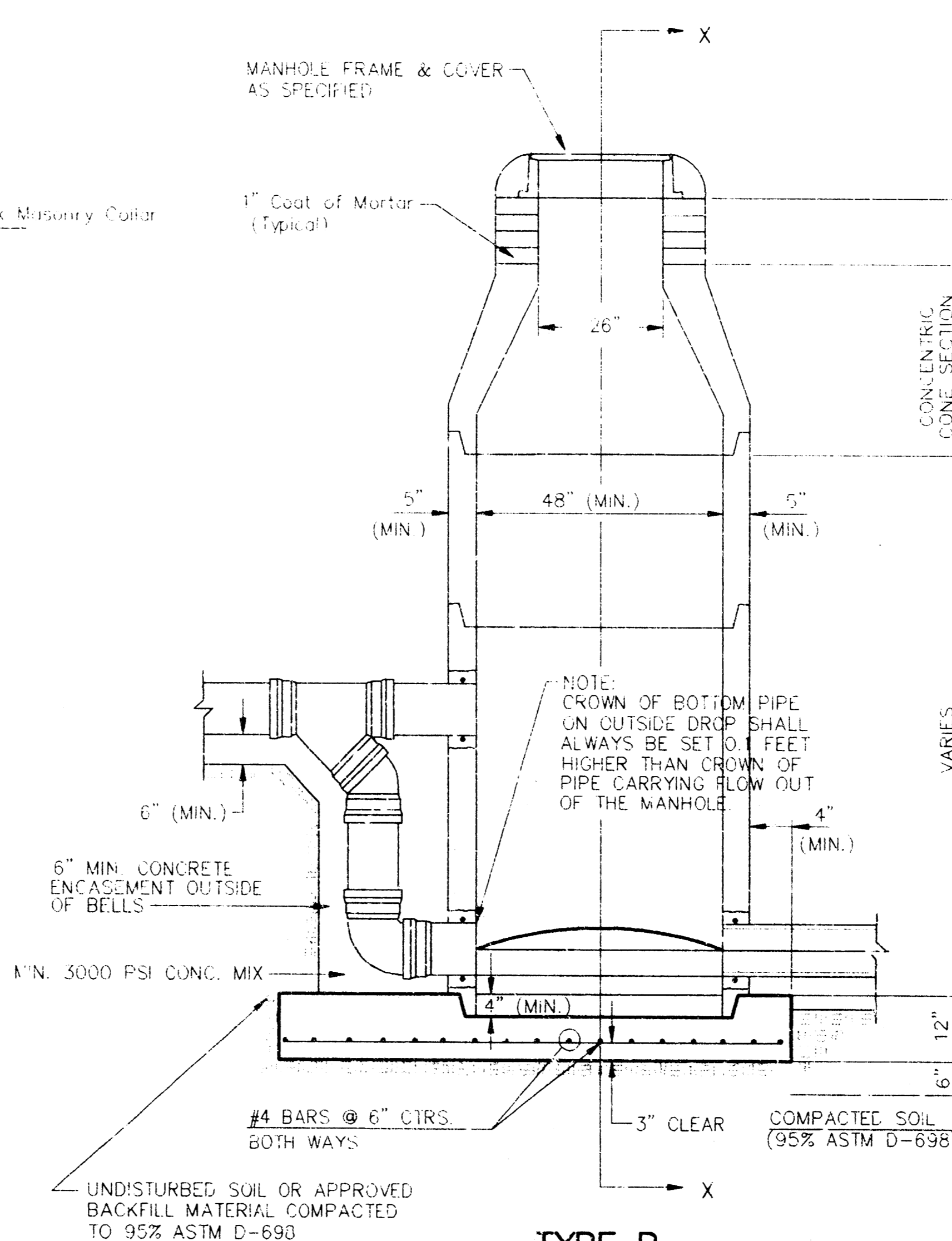
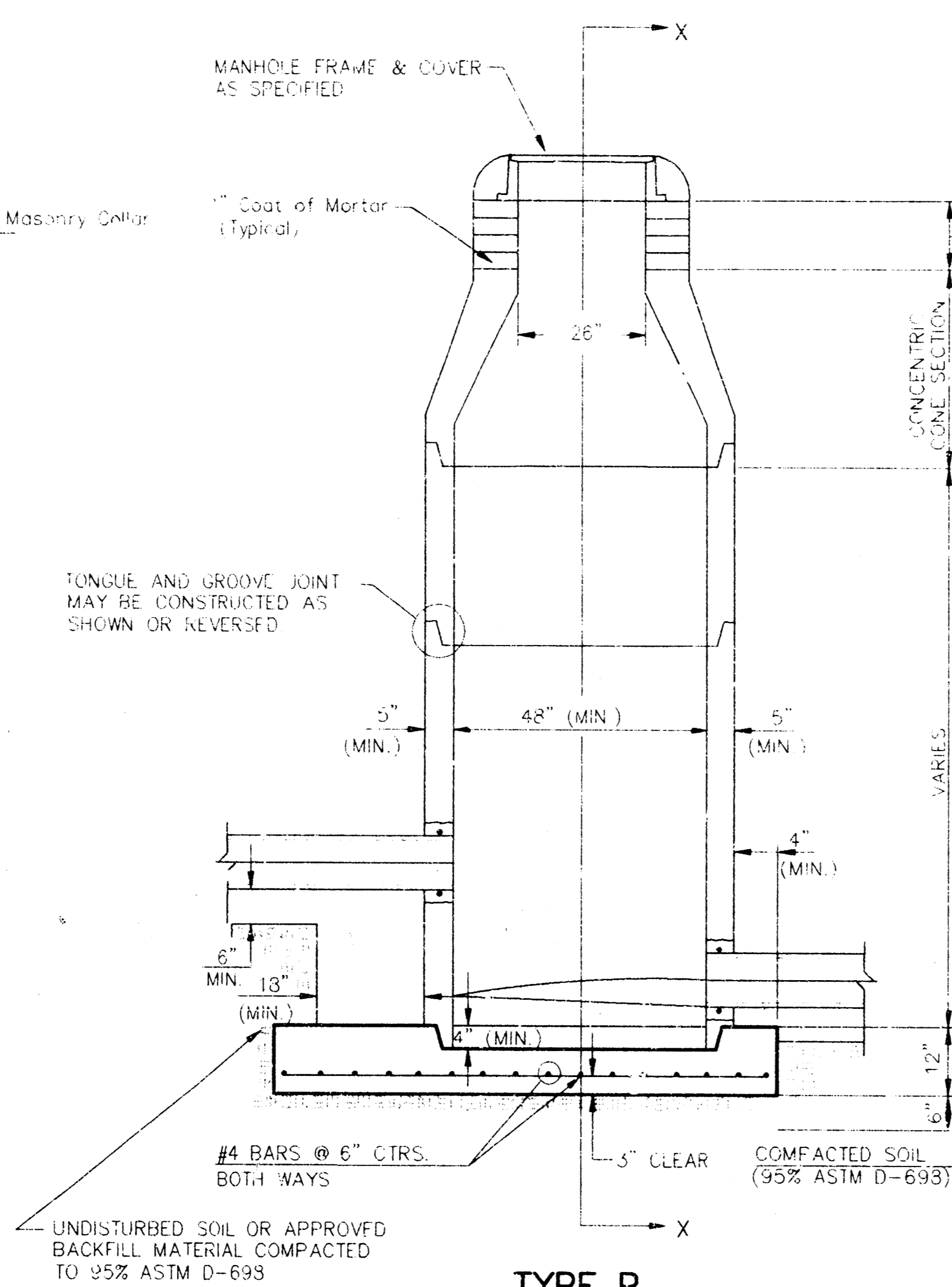
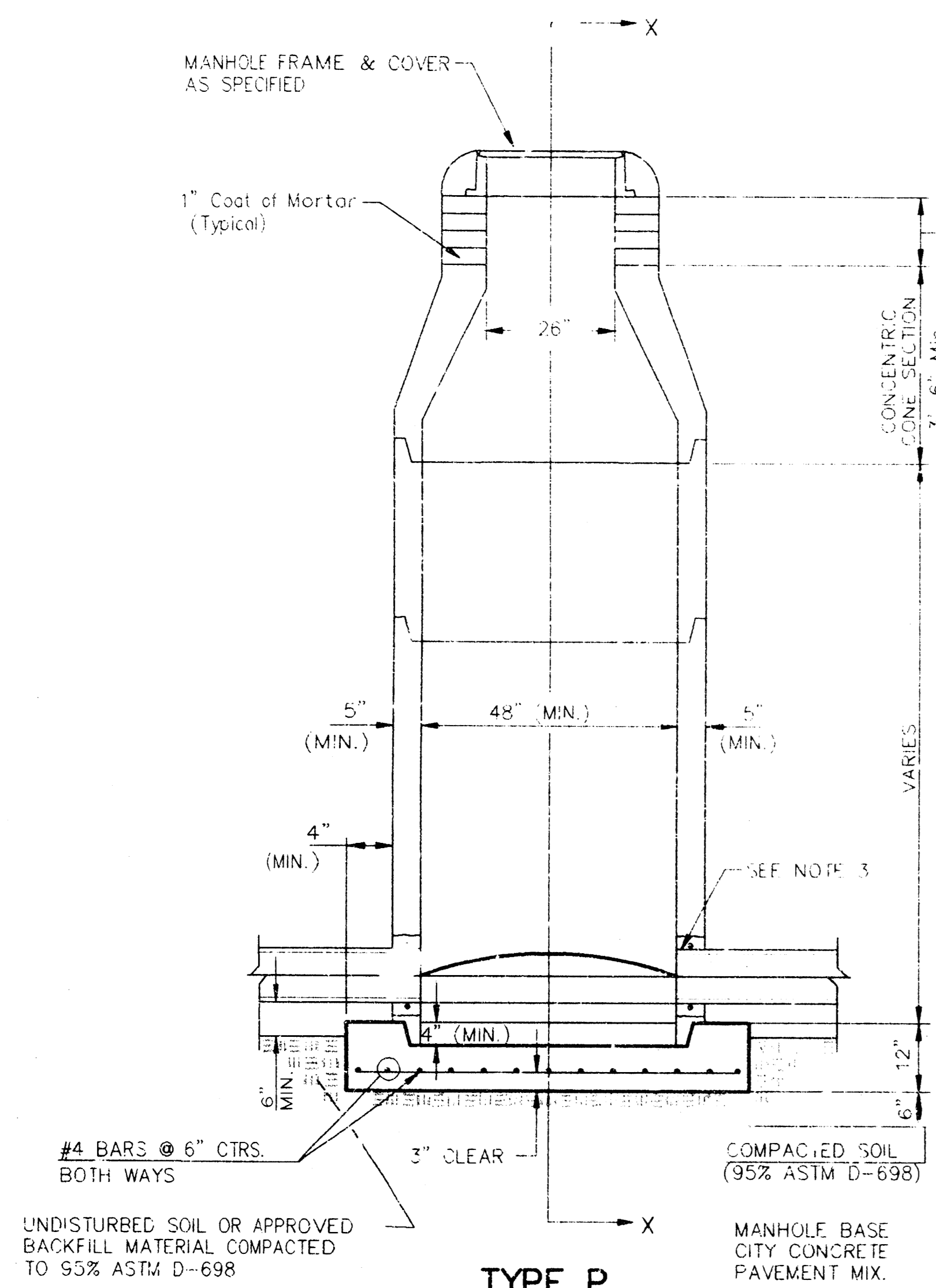


PARK WEST PLAZA
LATERAL 121
 WESTLINK SEWER

BAUGHMAN COMPANY P.A.
 ENGINEERING, SURVEYING, & PLANNING
 406 253 2271 • 115 ELLIS • WICHITA, KANSAS 67201

PROJECT NUMBER 488-78-245-82547-000-000-001				SHEET 2
DESIGN RHW/AV	DRAWN DT/MSP	APPROVED	DATE 7/7/20	SCALE AS SHOWN

SEWER APPURTENANCES DETAILS

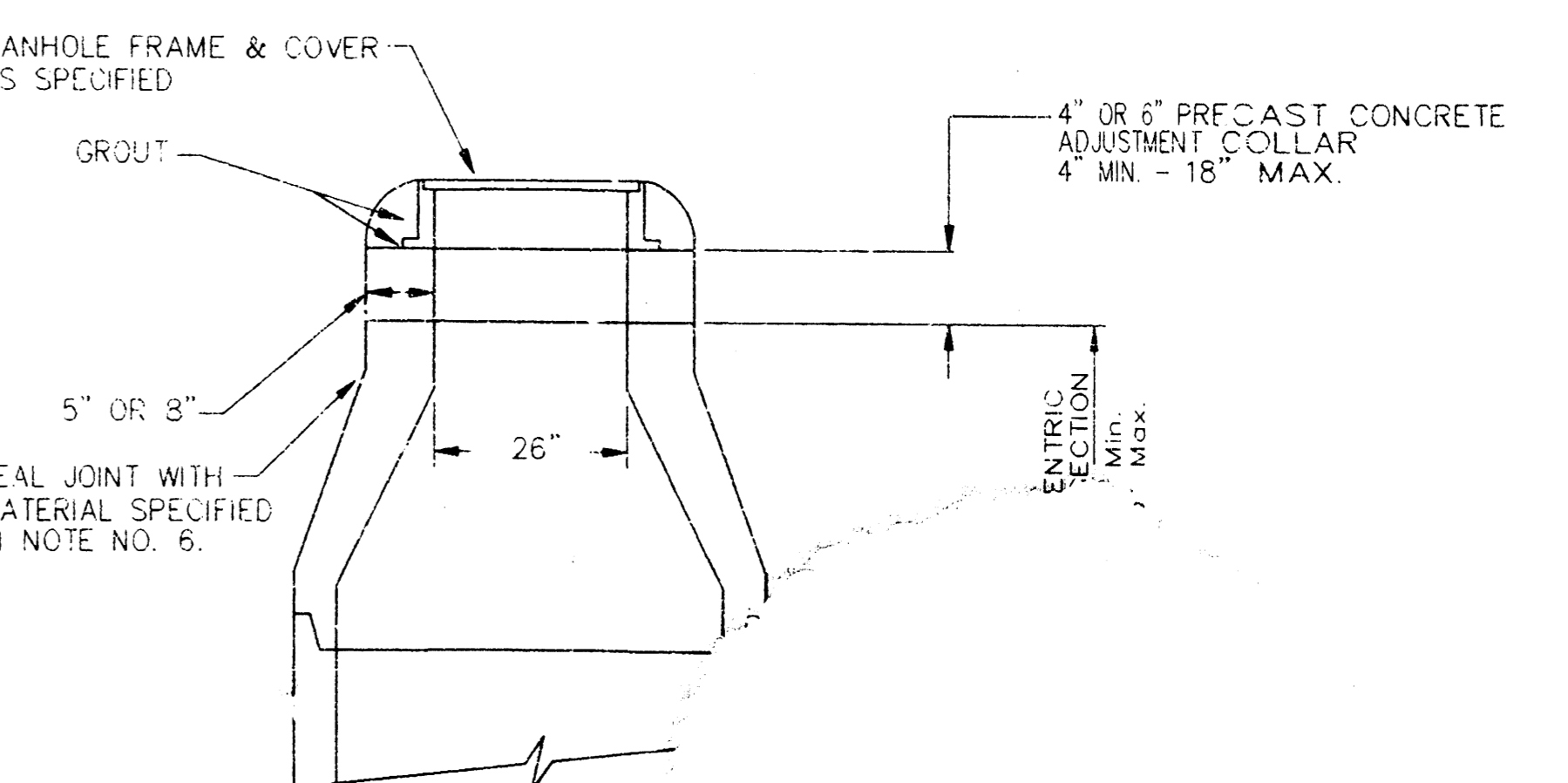


GENERAL NOTES

- PRECAST MANHOLE NOTES
- ALL PRECAST CONCRETE MANHOLE SECTIONS SHALL CONFORM TO THE LATEST REVISIONS OF A.S.T.M. C478 AS MODIFIED BY THE SPECIFICATIONS.
 - NON-SHRINK GROUT SHALL BE NON-METALLIC TYPE.
 - APPROVED FLEXIBLE WATERSTOP GASKETS SHALL BE INSTALLED TO JOIN THE SEWER TO THE MANHOLE WALL WHEN A.B.S. COMPOSITE PIPE OR P.V.C. PIPE IS USED. FOR OTHER TYPES OF PIPE THE SEWER SHALL BE GROUTED IN PLACE WITH NON-SHRINK GROUT. THE SEWER PIPE SHALL BE SUPPORTED WITH CONCRETE ENCASEMENT A MINIMUM OF 3 FEET FROM THE MANHOLE WALL AND TO THE FIRST JOINT FOR V.C.P. SUCH THAT THE JOINT REMAINS FLEXIBLE.
 - ALL INSIDE SURFACES OF THE CONCRETE MANHOLE WHICH WOULD BE EXPOSED TO SEWER GAS SHALL BE COATED WITH 2 COATS TNEC SERIES 66 HI-BUILD EPOXOLINE, DRY THICKNESS OF 8 MILS (MIN.)
 - EXTERIOR MANHOLE WALLS SHALL BE COATED WITH 1 COAT MOBILARMA 633 BITUMINOUS COATING.
 - JOINT SEALING COMPOUND SHALL BE KENT SEAL NO. 2 OR APPROVED EQUAL.
 - PRECAST MANHOLES SHALL BE SET AT LEAST 4 INCHES INTO THE MANHOLE BASE.
 - TOP OF MANHOLE FLOOR SLAB SHALL BE AT LEAST 3 INCHES BELOW THE FLOW LINE OF THE OUTLET PIPE TO INSURE SUFFICIENT MINIMUM THICKNESS OF SHAPED INVERT.
 - LIFTING HOLES SHALL BE FILLED WITH NON-SHRINK GROUT AND THE INTERIOR SURFACE COATED AS SPECIFIED.
 - MORTAR USED IN MASONRY CONSTRUCTION SHALL CONTAIN 8 SACKS OF CEMENT PER CUBIC YARD. CONCRETE USED IN MANHOLE BASES SHALL CONFORM TO THE REQUIREMENTS OF CONCRETE FOR CONCRETE PAVEMENT CONSTRUCTION AS SPECIFIED IN THE CITY STANDARD PAVING SPECIFICATIONS USING CITY CONCRETE PAVEMENT MIX WITHOUT AIR ENTRAINING ADMIXTURE. MORTAR SHALL BE PLACED AROUND THE MANHOLE RING AS SHOWN ON THE DRAWINGS WHEN MANHOLES ARE CONSTRUCTED IN UNPAVED AREAS. MANHOLES CONSTRUCTED WHERE PIPE SIZES ARE SMALLER THAN 24" SHALL HAVE AN INSIDE DIAMETER OF 4". MANHOLES CONSTRUCTED WHERE PIPE SIZES ARE 24" OR LARGER SHALL HAVE AN INSIDE DIAMETER OF 5". COMPLETED MANHOLE SHALL BE WITHOUT LEAKS AND WATER TIGHT.

- REINFORCING STEEL SHALL BE INSTALLED IN THE MANHOLE BASES AND SHALL CONSIST OF NO. 4 BARS PLACED ON 6" CENTERS IN BOTH DIRECTIONS. THE MANHOLE BASE REINFORCEMENT SHALL BE PLACED AT LEAST 3" ABOVE THE BOTTOM OF THE MANHOLE BASE. ALL COSTS FOR FURNISHING AND INSTALLING REINFORCING STEEL SHALL BE INCLUDED IN THE UNIT PRICE BID FOR THE MANHOLE.
- OPENINGS SHALL BE CUT INTO THE MANHOLE WALL WHEN OUTSIDE DROPS ARE CONSTRUCTED ON EXISTING MANHOLES. SUCH OPENINGS CUT INTO EXISTING MANHOLES SHALL BE AS SMALL AS PRACTICAL TO FACILITATE INSTALLING AND GROUTING THE NEW PIPE IN PLACE. WATERSTOP GASKETS SHALL BE USED WITH P.V.C. AND A.B.S. COMPOSITE PIPE. THE NEW PIPE SHALL BE GROUTED INTO THE OPENING USING AN APPROVED NONSHRINK GROUT FOR THE FULL MANHOLE WALL THICKNESS. THE NONSHRINK GROUT FOR THE FULL MANHOLE WALL THICKNESS. THE EXTERIOR OF THE COMPLETED CONNECTION SHALL BE SEALED WITH AN APPROVED BITUMINOUS COATING SUCH THAT THE CONNECTION WILL BE WATER TIGHT. FLOOR OF MANHOLE SHALL BE MODIFIED TO FORM NEW FLOW CHANNEL FOR THE NEW CONNECTION AS INDICATED BY THE DRAWING. THIS WORK, INCLUDING MODIFICATION OF MANHOLE FLOOR, SHALL BE PAID FOR AT THE UNIT PRICE BID FOR OUTSIDE DROP STACK CONSTRUCTED ON EXISTING MANHOLE.
- THE FLOORS OF ALL MANHOLES SHALL BE SHAPED WITH FLOW CHANNELS SUCH THAT THE MANHOLES WILL BE SELF CLEANING AND FREE OF AREAS WHERE SOLIDS COULD BE DEPOSITED AS SEWAGE FLOWS THROUGH THE MANHOLE FROM ALL INLET PIPES TO THE OUTLET PIPE. FLOW CHANNELS SHALL BE FORMED TO MATCH THE BOTTOM HALVES OF THE INFLOWING PIPES AND THE OUTFLOWING PIPE AS SHOWN BY THE DRAWINGS EXCEPT FOR INSIDE DROP MANHOLES. FLOW CHANNELS FOR INSIDE DROP MANHOLES SHALL BE CONSTRUCTED AS INDICATED BY THE DRAWING. MANHOLE FLOORS SHALL HAVE SLOPES OF 3 INCHES PER FOOT IN THE AREAS OUTSIDE OF THE FLOW CHANNELS SLOPED TOWARD THE FLOW CHANNELS. PIPES LAID THROUGH MANHOLES SHALL HAVE THE TOP HALF REMOVED TO NEAT LINES FOR THE FULL INSIDE DIAMETER OF THE MANHOLE. MANHOLE FLOORS SHALL THEN BE SHAPED AROUND THE BOTTOM HALF OF THE PIPE WHICH FORMS THE FLOW CHANNEL.
- PIPES INSTALLED WITHIN THE EXCAVATION MADE FOR THE MANHOLE SHALL BE CRADLED WITH CONCRETE TO THE LIMITS OF THE MANHOLE EXCAVATION. WHEN CLAY PIPE IS USED, THE CRADLE SHALL EXTEND TO THE FIRST JOINT OUTSIDE THE MANHOLE. THE CRADLE SHALL BE TERMINATED AT THE CLAY PIPE JOINT IN A MANNER WHICH WILL MAINTAIN THE FLEXIBILITY OF THE JOINT. COST OF CRADLE WITHIN MANHOLE EXCAVATION OR TO CLAY PIPE JOINTS ADJACENT TO MANHOLE SHALL BE INCLUDED IN THE UNIT PRICE BID FOR THE MANHOLE.

- MANHOLE COVER CASTINGS AND MANHOLE FRAME CASTINGS SHALL CONFORM TO THE REQUIREMENTS AS INDICATED IN THE STANDARD SPECIFICATIONS AND AS SHOWN IN THE STANDARD DETAIL DRAWING.
- THE VERTICAL DROP IN INSIDE DROP MANHOLES SHALL NOT EXCEED 2' FOR INFLOWING PIPES SIZED 12" OR SMALLER AND 2' FOR INFLOWING PIPES LARGER THAN 12". THE CROWNS OF INFLOWING PIPES SHALL NEVER BE SET LOWER THAN THE CROWN OF THE OUTFLOWING PIPE.
- STANDARD MANHOLES AND STANDARD INSIDE DROP MANHOLES SHALL BE BID AS STANDARD MANHOLES FOR THE TYPE AND DIAMETER INDICATED. OUTSIDE DROP MANHOLES SHALL BE BID AS STANDARD OUTSIDE DROP MANHOLES FOR THE TYPE AND DIAMETER INDICATED. ALL MANHOLE DIAMETERS WILL BE 4' UNLESS INDICATED OTHERWISE.
- A BRICK MASONRY COLLAR SHALL BE INSTALLED BETWEEN THE CAST IRON FRAME AND THE CONCENTRIC CONE. THE COLLAR WILL HAVE 8" WALLS AND A VERTICAL HEIGHT OF 6" MINIMUM AND 18" MAXIMUM. A 1" COAT OF MORTAR WILL BE PLASTERED ON THE OUTSIDE OF THE COLLAR. THE USE OF PRE-CAST CONCRETE SPACERS FOR MANHOLE TOP ADJUSTMENT IS ALSO ALLOWED.



CITY OF WICHITA

STD. MANHOLE DETAILS
& SEWER APPURTENANCES DETAILS

BAUGHEMAN COMPANY P. A.
ENGINEERING, SURVEYING, & PLANNING

316 - 282-1221 • 75 E. 2nd • WICHITA, KANSAS 67211

PROJECT NUMBER
488-78-245-82547-000-001

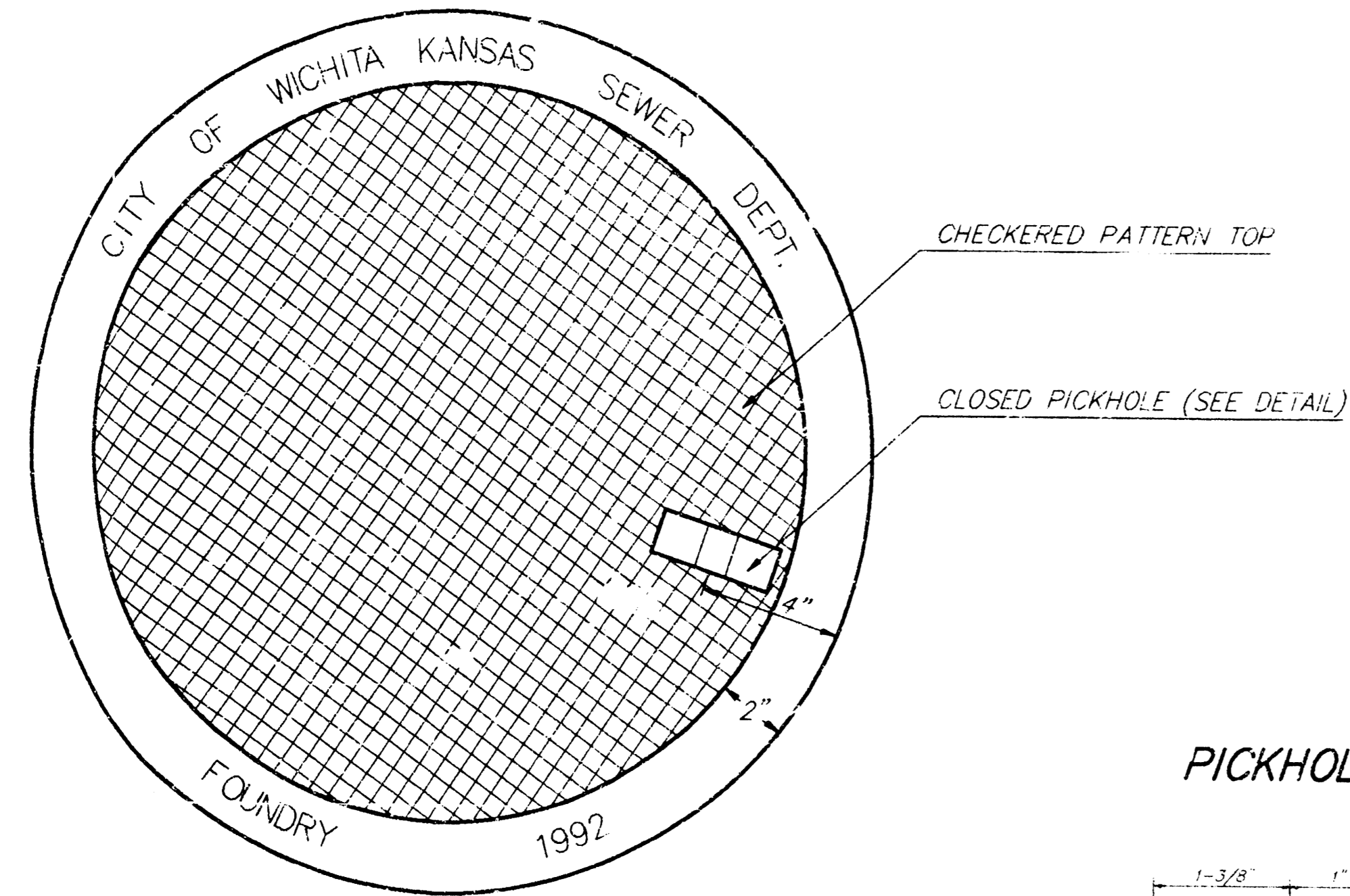
DESIGN: C.O.W. DRAWN: Staff APPROVED: DATE: 11/43 SCALE: None

SHEET **3** OF **5**

MANHOLE COVER
Weight = 180 Lbs.

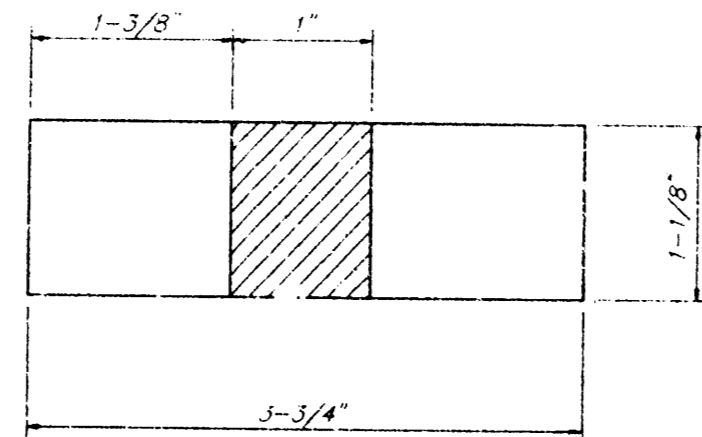
MANHOLE FRAME AND COVER DETAIL

ADOPTED AS STANDARD DESIGN BY
CITY OF WICHITA, KANSAS

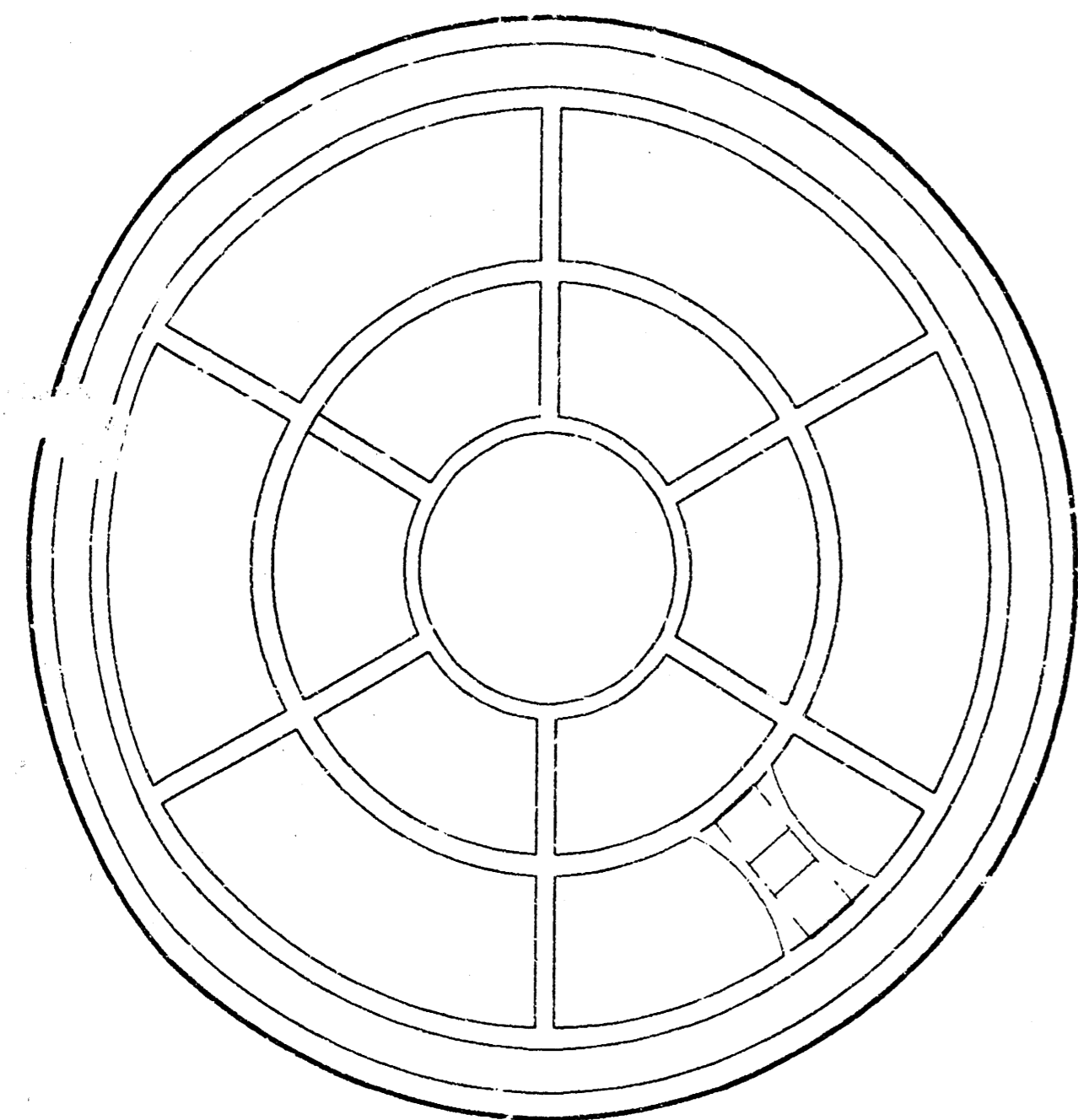


TOP VIEW

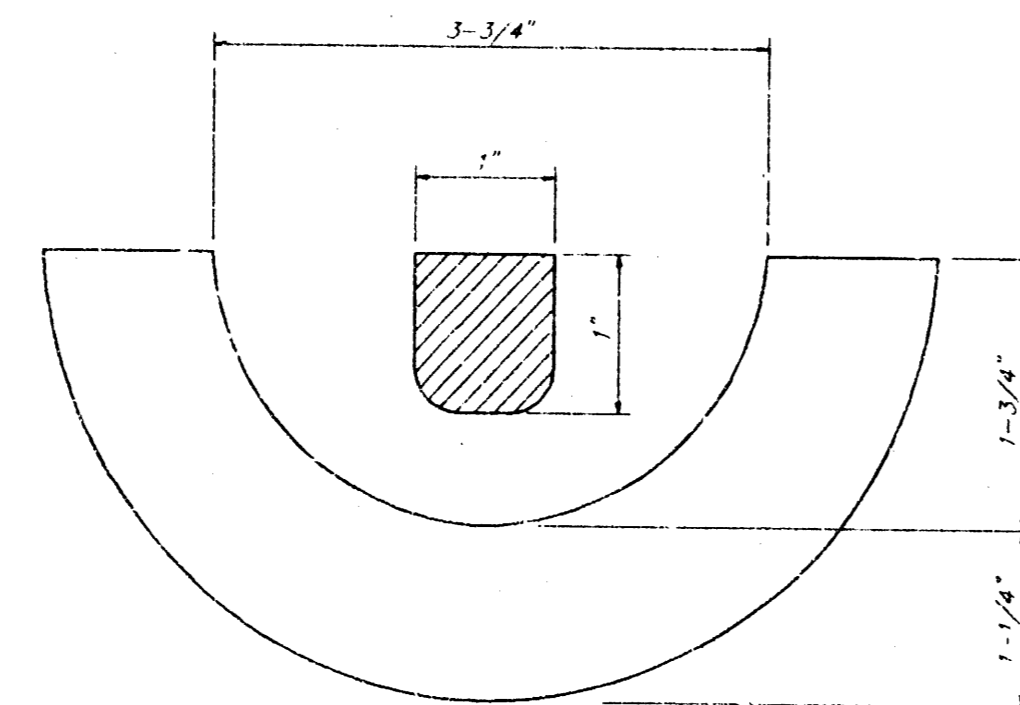
PICKHOLE DETAIL



TOP VIEW

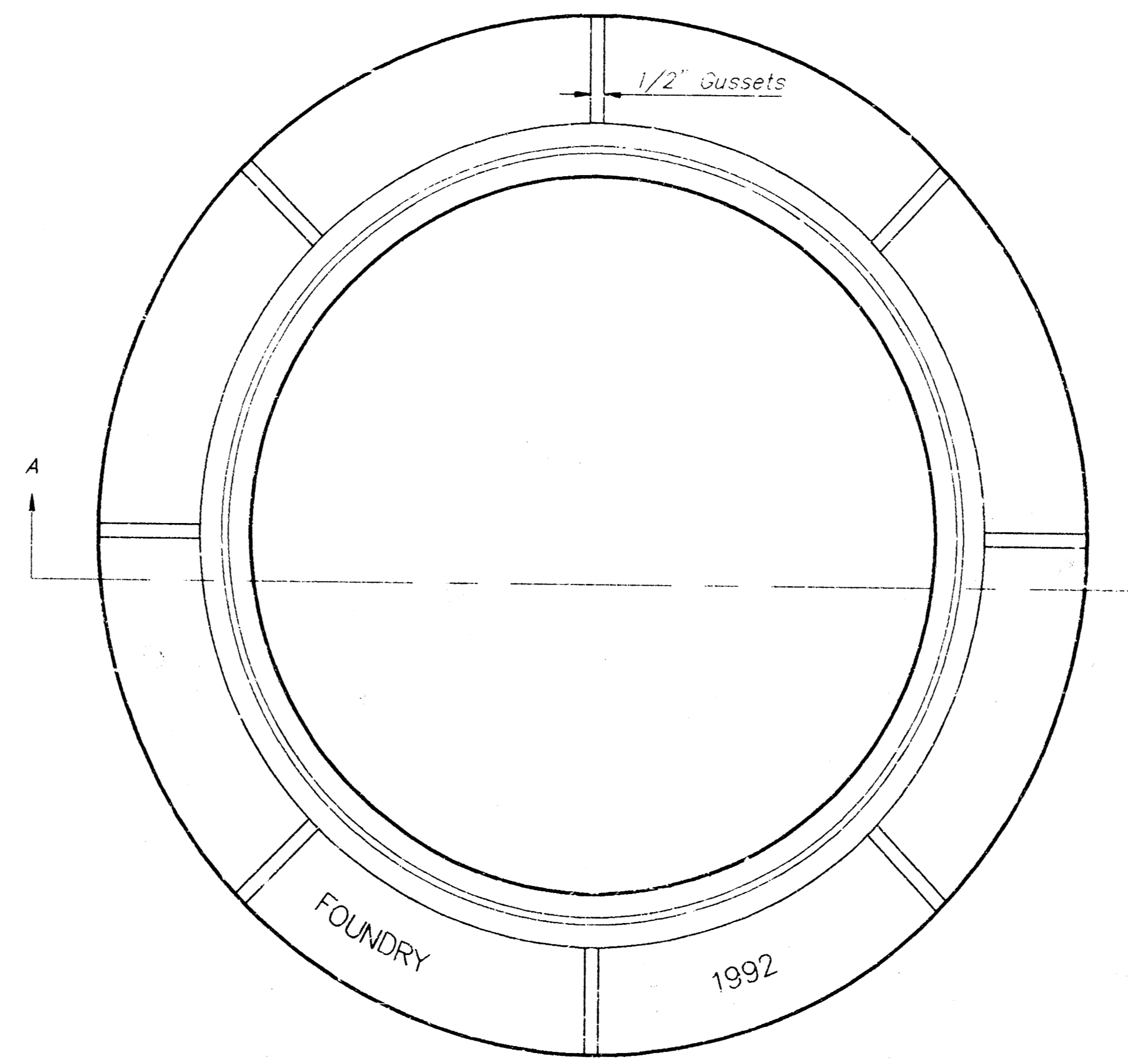


BOTTOM VIEW



SECTION VIEW

MANHOLE FRAME
Weight = 240 Lbs.



TOP VIEW

GENERAL NOTES

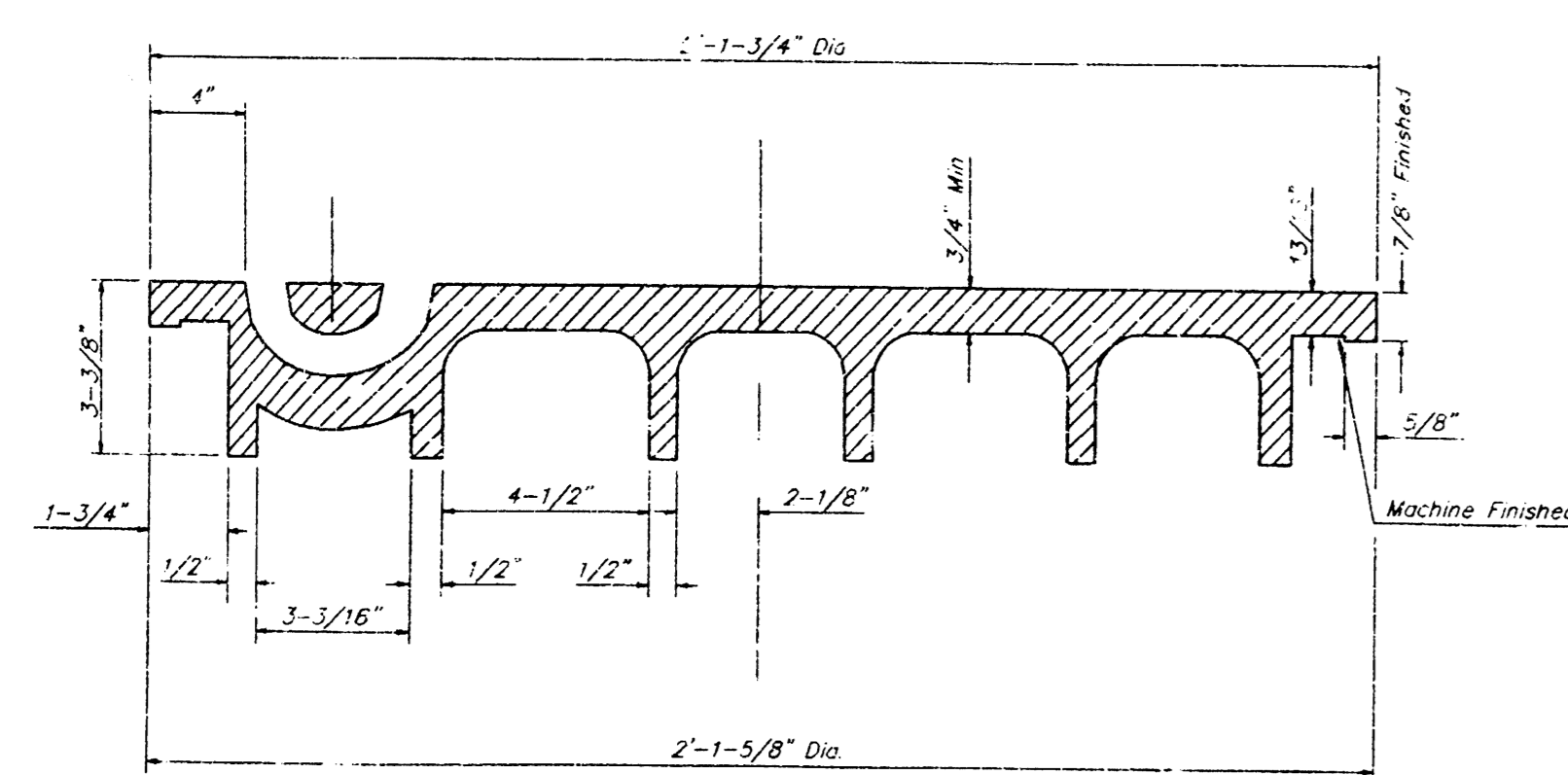
MANHOLE CASTINGS SHALL BE MANUFACTURED USING GOOD QUALITY GRAY IRON CONFORMING TO CLASS 30 OF A.S.T.M. DESIGNATION A-48. DIMENSIONS AND WEIGHTS SHOWN ON THE DETAILED DRAWINGS SHALL BE CONSIDERED AS MINIMUM REQUIREMENTS AND ANY DEVIATIONS FROM THE DIMENSIONS SHOWN MUST BE SPECIFICALLY APPROVED. THE FINISHED CASTINGS SHALL BE OF UNIFORM QUALITY, FREE FROM BLOWHOLES, POROSITY, HARD SPOTS, SHRINKAGE DISTORTIONS OR OTHER DEFECTS.

MANHOLE CASTINGS SHALL BE COATED WITH AN ASPHALT PAINT RESULTING IN A SMOOTH, TOUGH AND TENACIOUS COATING WHICH IS NOT BRITTLE OR TACKY.

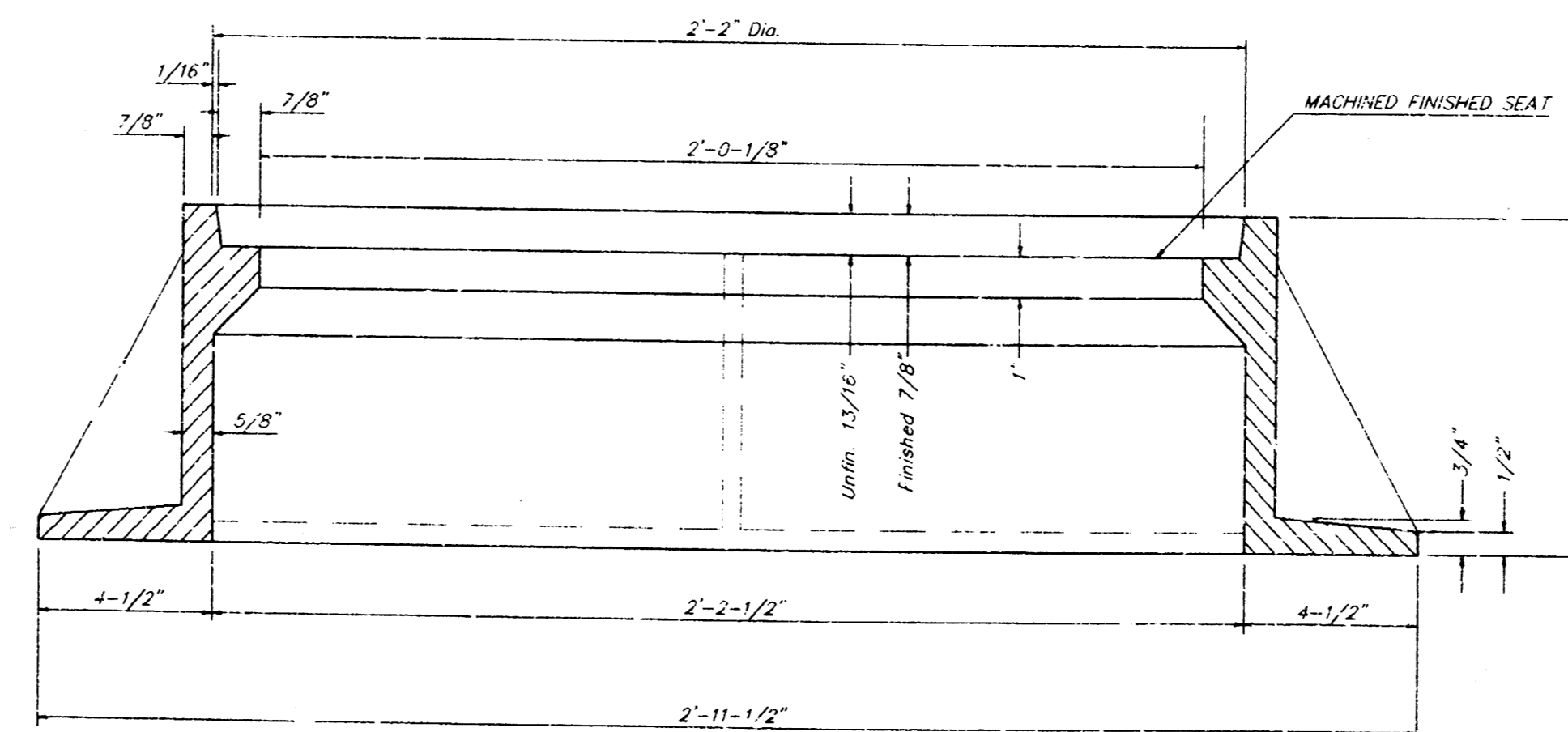
MANHOLE CASTINGS SHALL BE MANUFACTURED SUCH THAT A COVER MANUFACTURED BY ANY ONE FOUNDRY WILL FIT INTERCHANGEABLY INTO A FRAME MANUFACTURED BY ANOTHER FOUNDRY AND STILL MEET ALLOWABLE CLEARANCES AND NON-ROCKING REQUIREMENTS. THIS WILL REQUIRE MANUFACTURING OF THE MATCHING FACES ON THE COVER AND THE FRAME TO CLOSE TOLERANCES.

THE OUTSIDE CIRCUMFERENCE OF THE VERTICAL FACE OF THE COVER AND THE INSIDE CIRCUMFERENCE OF THE VERTICAL FACE IN THE FRAME RECESS SHALL BE MANUFACTURED TO TOLERANCES SUCH THAT THE CLEARANCE BETWEEN THE COVER AND FRAME WILL NOT EXCEED 1/8" AT ANY POINT AROUND THE CIRCUMFERENCE OF THE COVER. THE SEATING SURFACES BETWEEN THE COVER AND FRAME SHALL BE MACHINED SUCH AS THESE SURFACES SHALL MAKE FULL CONTACT FOR THEIR FULL CIRCUMFERENCE TO PRECLUDE THE COVER FROM ROCKING IN THE FRAME.

THE MANHOLE FRAME AND COVER SHALL BE MARKED WITH LETTERING INDICATING THE NAME OF THE MANUFACTURER AND THE YEAR WHEN THE COVER OR FRAME WAS CAST. THE COVER SHALL BE FURTHER IDENTIFIED WITH REGARDS TO OWNERSHIP USING LETTERS AT LEAST 1" IN HEIGHT. THIS IDENTIFICATION SHALL BE "CITY OF WICHITA SEWER DEPARTMENT". THE WORD DEPARTMENT MAY BE ABBREVIATED. THE TEXTURE OF THE TOP SURFACE OF THE COVER SHALL BE 1" MANUFACTURED IN A CHECKERED PATTERN DESIGN AS INDICATED ON THE DRAWINGS. SMOOTH BLOCKOUTS SHALL BE UTILIZED TO HIGHLIGHT THE LETTERING ON THE COVER SURFACE. THE TOTAL AREA OF SMOOTH SURFACE BLOCKOUT SHALL NOT EXCEED THE AREA AS INDICATED ON THE DRAWING. POSITIONING OF SMOOTH BLOCKOUTS AND LETTERING MAY VARY FROM THAT SHOWN ON THE DETAILED DRAWING.



SECTION VIEW



SECTION A-A

MANHOLE FRAME AND COVER DETAIL			
PARK WEST PLAZA			
CITY OF WICHITA STANDARD DETAIL			
BAUGHMAN COMPANY P. A.			
ENGINEERING, SURVEYING, & PLANNING			
108 - 262 - 2731 • 115 ELLS • WICHITA, KANSAS 67202			
PROJECT NUMBER		SHEET	
488-78-245-82547-000-001		4	
DESIGN	DRAWN	APPROVED	DATE
C.O.W.	Scot		1/20/00
SCALE		DATE	
		5	

PARK WEST PLAZA

AN ADDITION TO WICHITA, KANSAS

State of Kansas } S.S. We, Baughman Co., P.A., Surveyors in
Sedwick County } do hereby certify that we have surveyed and
platted "PARK WEST PLAZA," an Addition to Wichita, Kansas, and
that the accompanying plat is a true and correct exhibit of the
property surveyed described as and being a replat of Lot 1, River-
side Hospital 1st Addition, Wichita, Kansas, together with a tract in
the N.E. 1/4 of Sec. 19 Twp. 27 S., R-1-W of the 6th P.M., Sedwick
County, Kansas, described as beginning at a point on the east line
of said N.E. 1/4, said point being 905.8 feet south of the N.E. Corner
of said N.E. 1/4, thence west parallel with the north line of said N.E.
1/4, 1036 feet, thence southerly with an interior angle of 86° 03' 10"
feet, thence southeasterly 934.60 feet more or less to a point 60 feet
north and 126 feet west of the S.E. Corner of said N.E. 1/4, thence east
parallel with the south line of said N.E. 1/4, 126 feet to a point on the
east line of said N.E. 1/4, thence north along the east line of said N.E. 1/4
608.63 feet more or less to a point 1375.8 feet south of the N.E. Corner of said
N.E. 1/4, thence west parallel with the north line of said N.E. 1/4, 60 feet, thence
north parallel with the east line of said N.E. 1/4, 170 feet, thence east parallel
with the north line of said N.E. 1/4, 60 feet to a point on the east line of said
N.E. 1/4, thence north along the east line of said N.E. 1/4, 300 feet to the point
of beginning, EXCEPT the south 100 feet thereof and EXCEPT that part
platted as J.W. Russell First Addition to Wichita, Sedwick County,
Kansas existing easements being vacated by virtue of 1831 12-6-86.

12-27-91
Baughman Company P.A.
Surveyor
Gregory F. Severns

Know all men by these presents, that we, the
undersigned have caused the land described in the surveyors certificate
to be platted into Lots, Streets, and Reserves to known as "PARK
WEST PLAZA," an Addition to Wichita, Kansas. The streets are
hereby dedicated to and for the use of the public. The utility and drain-
age easements are hereby granted as indicated for the construction
and maintenance of all public utilities and for drainage purposes.
Easements for the construction and maintenance of street drainage and
public utilities, as indicated in the accompanying plat, are hereby granted.
The minimum building floor elevation is 137.6 City Datum (1325 Mean
Sea Level) All abutters rights of access over and across the east line
of the north 105 feet of Lot 1, the south 105 feet of Lot 2, Lots 5, 6
and 7 are hereby granted to the City of Wichita, provided however that
Lots 5, 6, and 7 have access to Maize Road at one point per Lot as shall
be determined by the City Engineer of the City of Wichita, Kansas. The
Floodway shall be the responsibility of the owner of Lot 4, until such
time as the governing body exercising jurisdiction elects to assume the
responsibility for maintenance and improvements of drainage, provided
further that no structure shall be constructed on or within said Floodway
nor shall any fill, change of grade, creation of channel or other work be carried
out without the permission of the Wichita-Sedwick County Flood Control office,
or their successors of office. Reserves A and C are hereby reserved for landscaping and
entry features, including signs, monuments, and irrigation system. Reserve B is here-
by reserved for floodway and open space to be used and maintained by owners
of Lot 4 unless dedicated to the City for work purposes.

Thomas Forshell
RIVERSIDE HEALTH SERVICES, INC.
Robert Dixon Chief Financial Officer
J.W. RUSSELL CONSTRUCTION, INC.
President
Pamela E. Russell

State of Kansas } S.S. The foregoing instrument was acknowledged before
me this 23 day of January, 1990, by Robert Dixon, Chief Financial Officer of
Riverside Health Services, Inc., on behalf of the corporation.
My Appt Exp. 9-13-93
Notary Public

State of Kansas } S.S. The foregoing instrument was acknowledged
before me this 23 day of October, 1989, by J.W. Russell President
of J.W. Russell Construction, Inc., on behalf of the corporation.
My Appt Exp. 2-3-91
Notary Public

State of Kansas } S.S. The foregoing instrument was acknowledged before
me this 16 day of December, 1987, by Thomas Forshell, a single man.
My Appt Exp. 7-10-1991
Notary Public

State of Kansas } S.S. The foregoing instrument was acknowledged
before me this 14 day of December, 1987, by Jay W. Russell and Pamela
E. Russell, husband and wife.
My Appt Exp. May 1, 1993
Notary Public

Mid-Continent Federal Savings and Loan Association
Emprise Bank
Notary Public
A Marcile Leach aka A Marcile Crandall

State of Kansas } S.S. The foregoing instrument was acknowledged before
me this 23 day of December, 1987, by Barry W. Wesel, Vice Pres.
on behalf of Mid-Continent Federal Savings and Loan Association.
My Appt Exp. 9-21-92
Notary Public

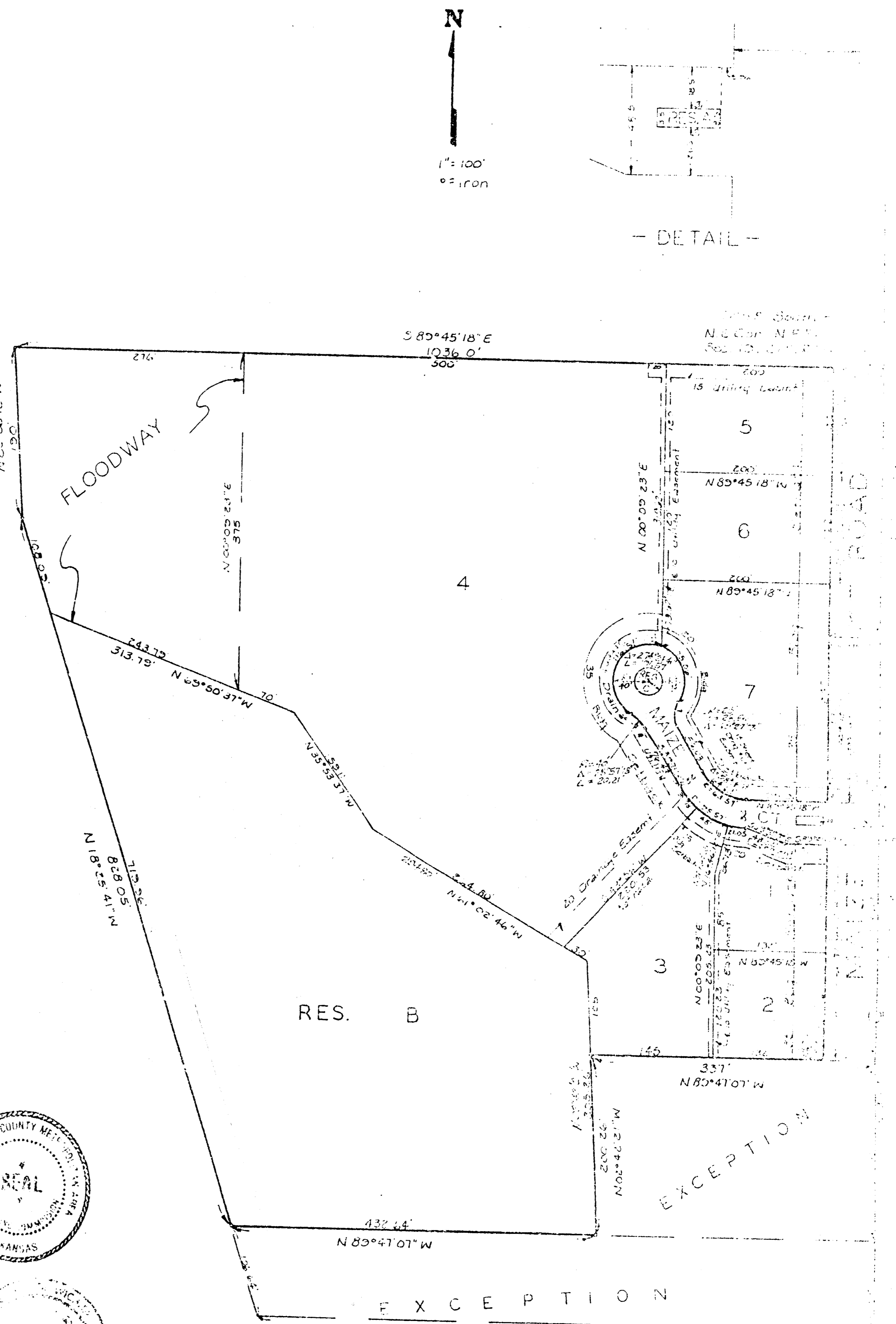
State of Kansas } S.S. The foregoing instrument was acknowledged before
me this 2 day of January, 1990, by Barry Wesel, Vice Pres.
on behalf of Emprise Bank.
My Appt Exp. 2-28-1993
Notary Public

State of Kansas } S.S. The foregoing instrument was acknowledged before
me this 23 day of Dec. 1987, by Robert A. Crandall and A Marcile
Leach aka A Marcile Crandall, husband and wife.
My Appt Exp. 7-16-1991
Notary Public

This plat of "PARK WEST PLAZA," an addition to
Wichita, Kansas has been submitted to and approved by the Wichita-Sedwick County
Metropolitan Area Planning Commission
Dated this 23 day of January, 1990
Wichita-Sedwick County Metropolitan Area Planning Commission
Chairman
Secretary
Mayor
City Clerk

Entered on transfer record this 22 day of
January, 1990
County Clerk

State of Kansas } S.S. This is to certify that this plat has been filed
for record in the office of the Register of Deeds this 23 day of
February, 1990, at 2:00 o'clock P.M., and is duly recorded.
Register of Deeds
Deputy



Minimum Floor Elevation:
137.6 City Datum
1325 Mean Sea Level
Bench Marks:
3/8" bar @ N.W. Cor. Planter @ N.W. Cor. S.W. Bell Bldg.
S.E. Cor. Central * Maize - Elev. = 145.73 City Datum
1333.13 M.S.L.
1" cut on top of curb @ S end of curb return @ S.E.
Cor. Hardner & Maize - Elev. = 134.5 City Datum
1321.00 M.S.L.