

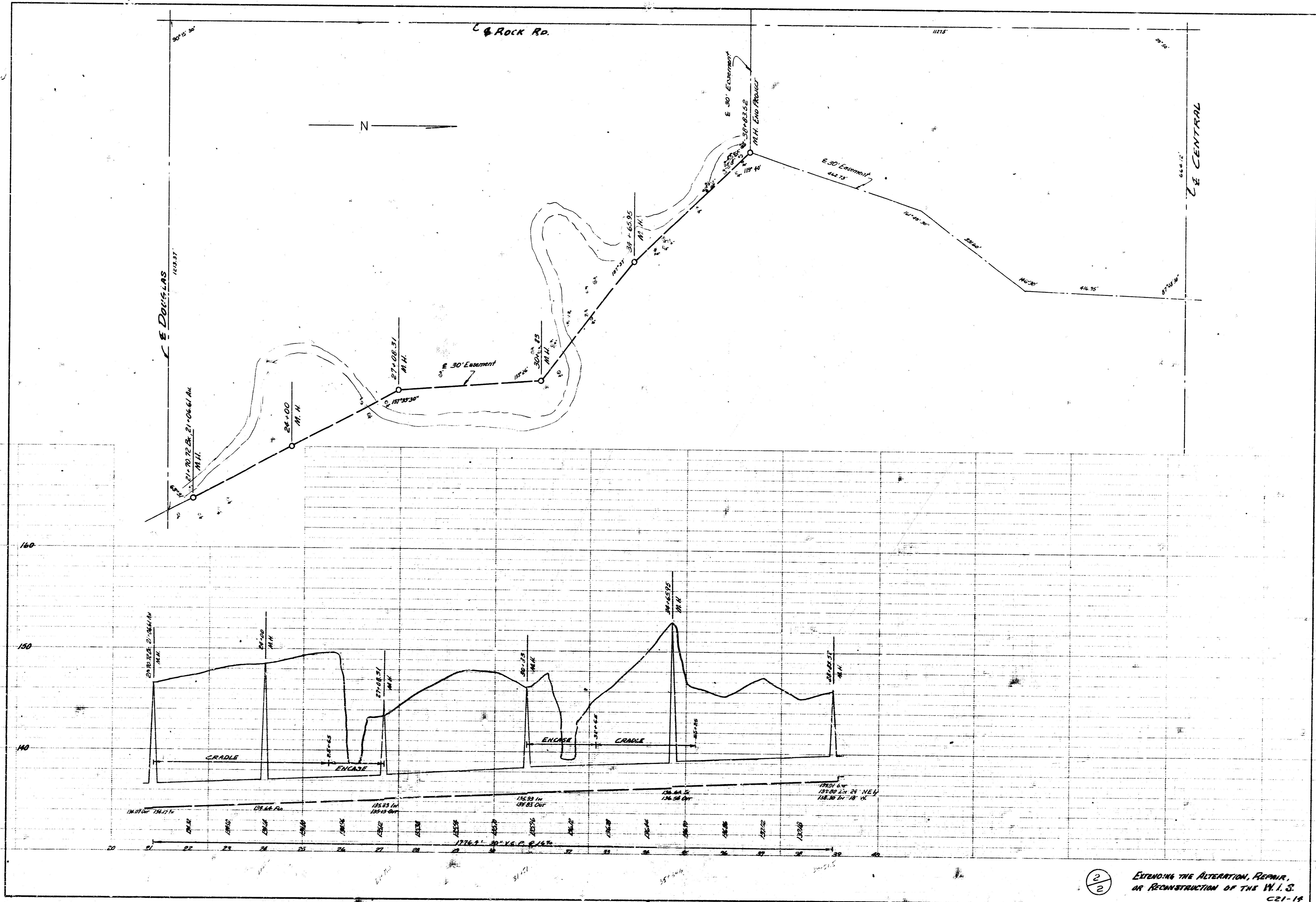
Note
 Manholes shall be standard City of Wichita manholes except the minimum thickness of the base shall be 3" and the walls shall be 12" brick masonry. The inside diameter of all manholes shall be 5'. Concrete cradle shall be as shown on the standard detail sheet except that the minimum thickness of concrete between the barrel of the pipe and the bottom of the ditch shall be 8". All encasement shall be 8" reinforced concrete as shown on the standard detail sheet. The bid for standard manholes shall include the cost of 1/2" x 26" stubs in the end M.H. Repair shall be perment with A.C.

Surveyed March 2061
 Plan D. Streets
 City of Wichita
 Date Sept 1961

B.M. 156.85 Bronze Cap Top E. End N. Humboldt N.E. R.C. B.C. 137' E. of Rock on Central
 B.M. 151.25 0" Top N. Howard S.3 R.C. B.C. 1800' E. of Rock on Douglas
 B.M. 145.69 30" Spike W.S. Power Pole @ Pole No. 262 Bonnie Brae

PLAN SCALE 1" = 100'
 PROFILE SCALE 1" = 100' HOR. 1" = 4' VERT.

EXTENDING THE ALTERNATE, REPAIR OR
 RECONSTRUCTION OF THE MAIN LINDSEY'S SEWER
 CITY OF WICHITA, KANSAS
 B.E. SMITH CITY ENGINEER
 SEPT 1961 PROJ. C21-14



2/2 EXTENDING THE ALTERATION, REPAIR, OR RECONSTRUCTION OF THE W.I.S. C21-15