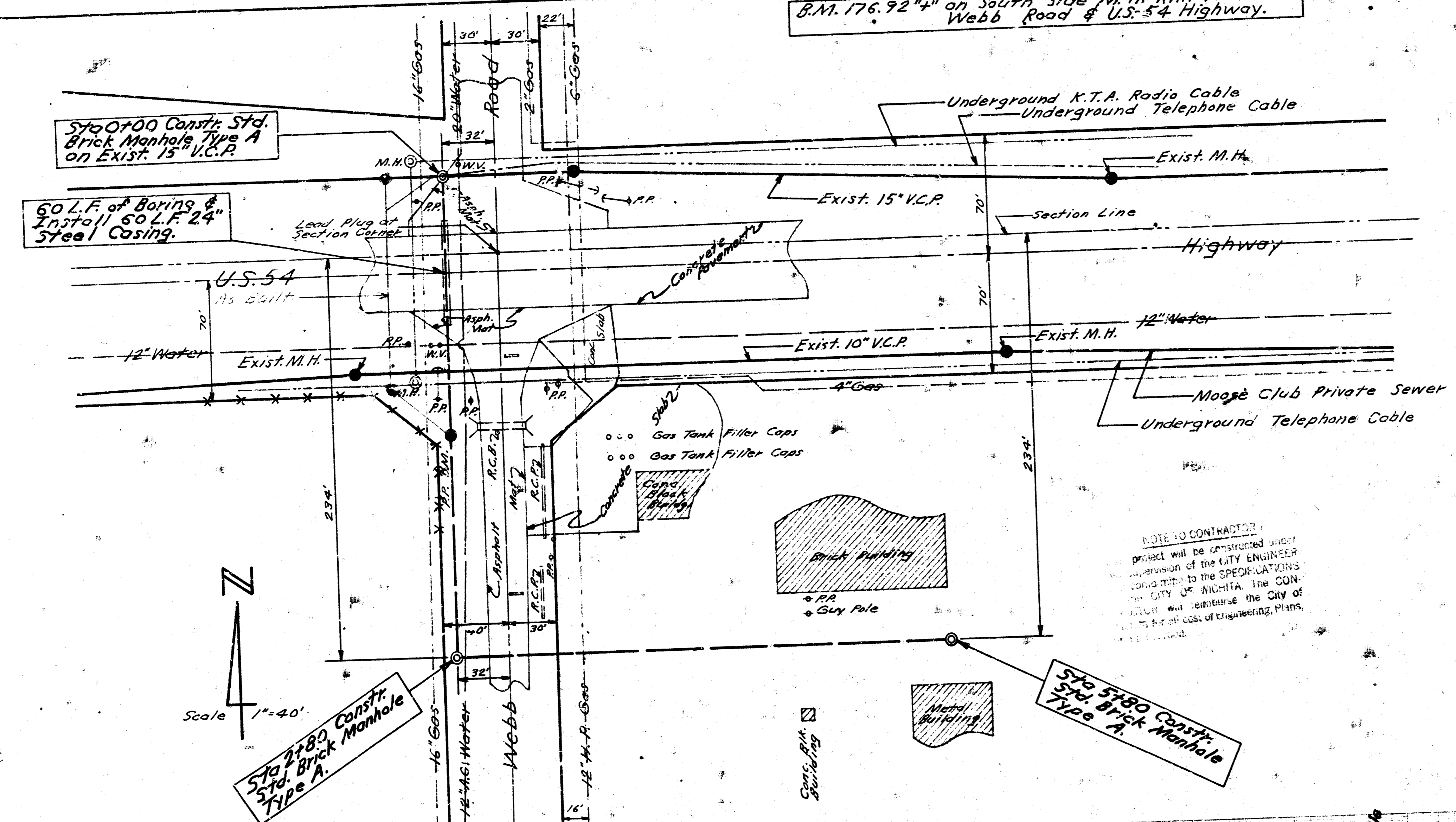


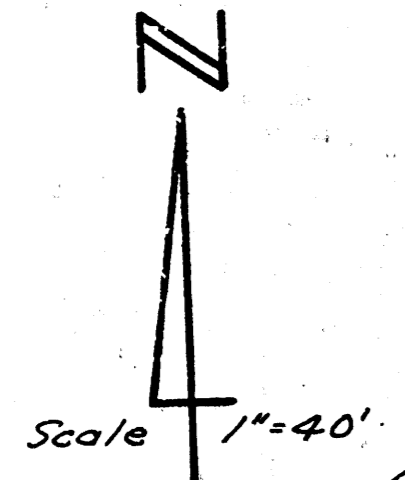
B.M. 176.92' on South Side M.H. Rim, N.W. Cor. Webb Road & U.S. 54 Highway.



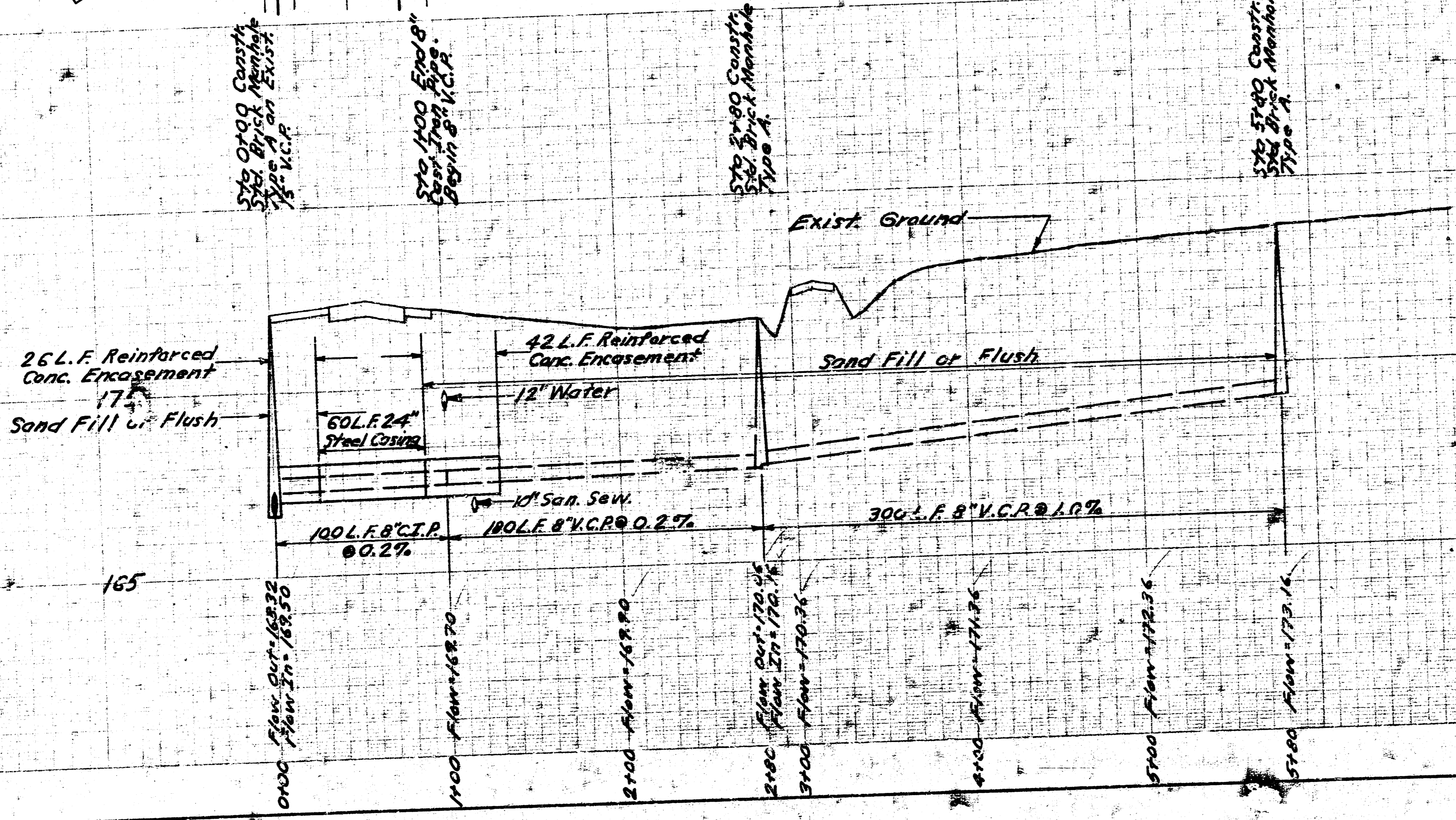
**NOTE TO CONTRACTOR**  
 Contractor will notify Owner of existing underground cables of prop. construction prior to commencing work.

Note: Casing pipe to be installed by boring methods using equipment that encases the hole as the earth is removed. Boring without concurrent installation of casing will not be permitted. Casing pipe to be new steel pipe conforming with A.S.T.M. Specification A 139 Grade B with a minimum wall thickness of 0.25 inches. Casing pipe to be completely filled with 4 sack sand mix concrete after installation of 8" cast iron sewer pipe. Casing to extend past the edges of pavement a minimum distance of 8 feet. Replace asphalt surface on Webb Road with 6" of asphalt.

**NOTE TO CONTRACTOR**  
 Project will be constructed under supervision of the CITY ENGINEER in accordance with the SPECIFICATIONS of the CITY OF WICHITA. The CONTRACTOR will advise the City of any changes or engineering plans.



Plan Scale 1"=40'  
 Profile Scale Horiz. 1"=40' Vert. 1"=4'



LAT. 29, WARR. INDIAN SEWER  
 CITY OF WICHITA, KANSAS  
 B. E. SMITH, CITY ENGINEER  
 PRIVATE CONTRACT  
 DATE: MAY 1968  
 SHEET NO. 1 OF 1