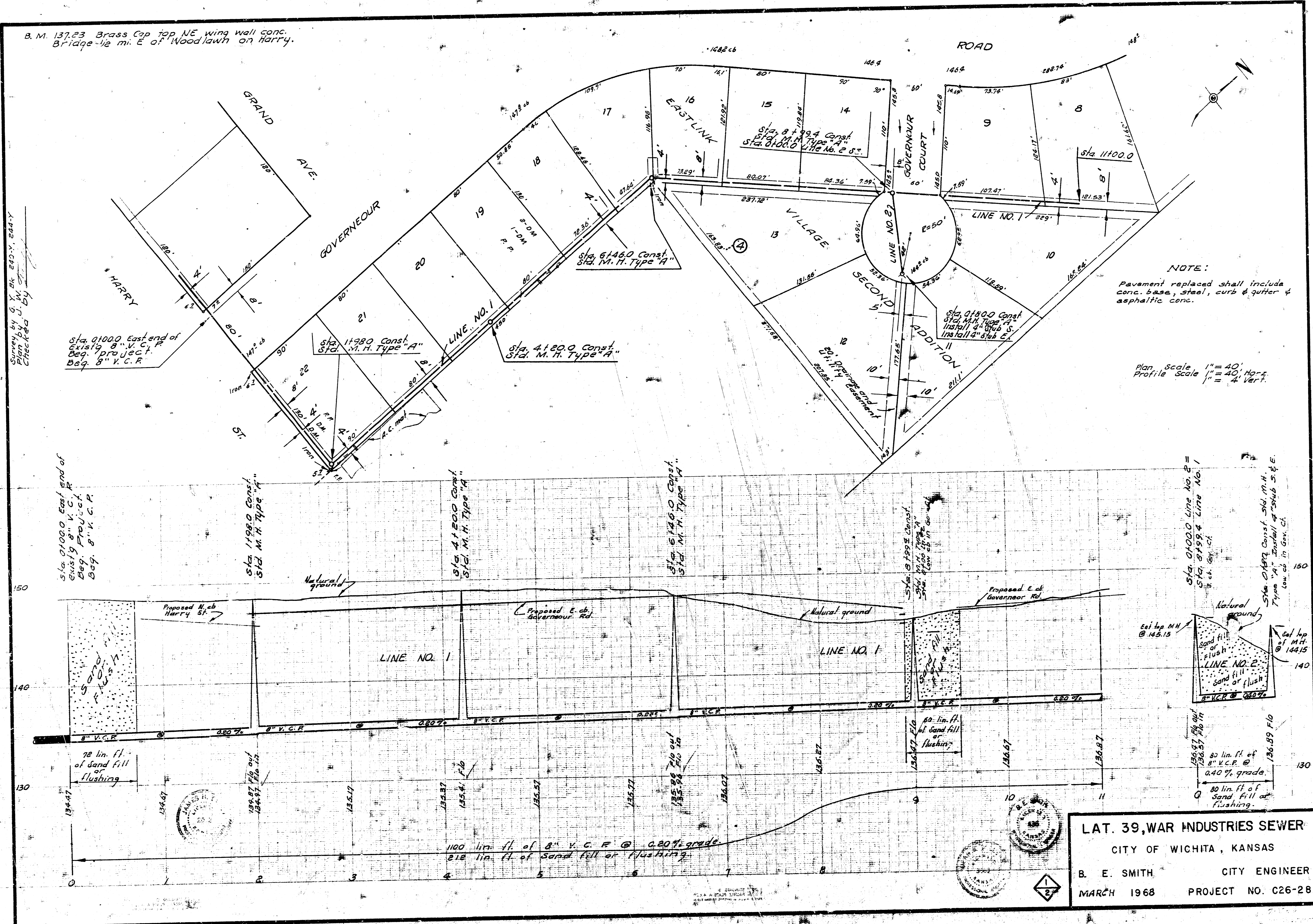


B. M. 137.23 Brass Cap top, NE wing wall conc.  
 Bridge 1/2 mi. E of Woodlawn on Harry.

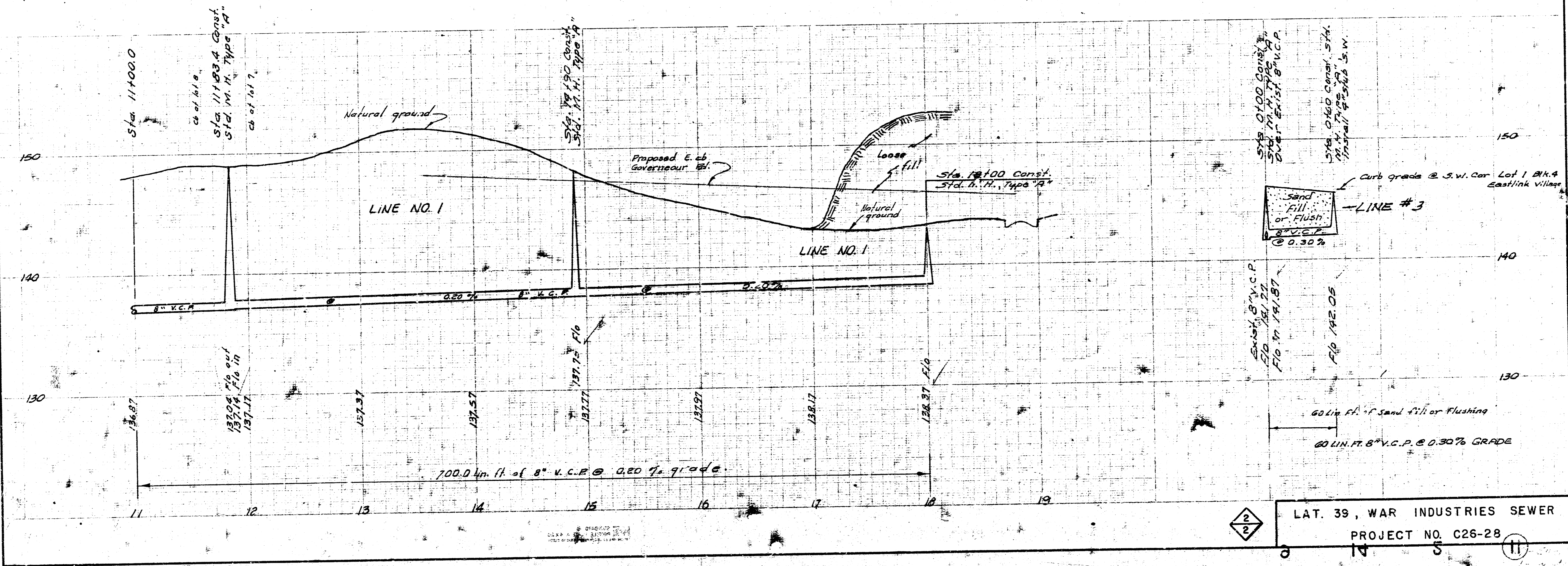
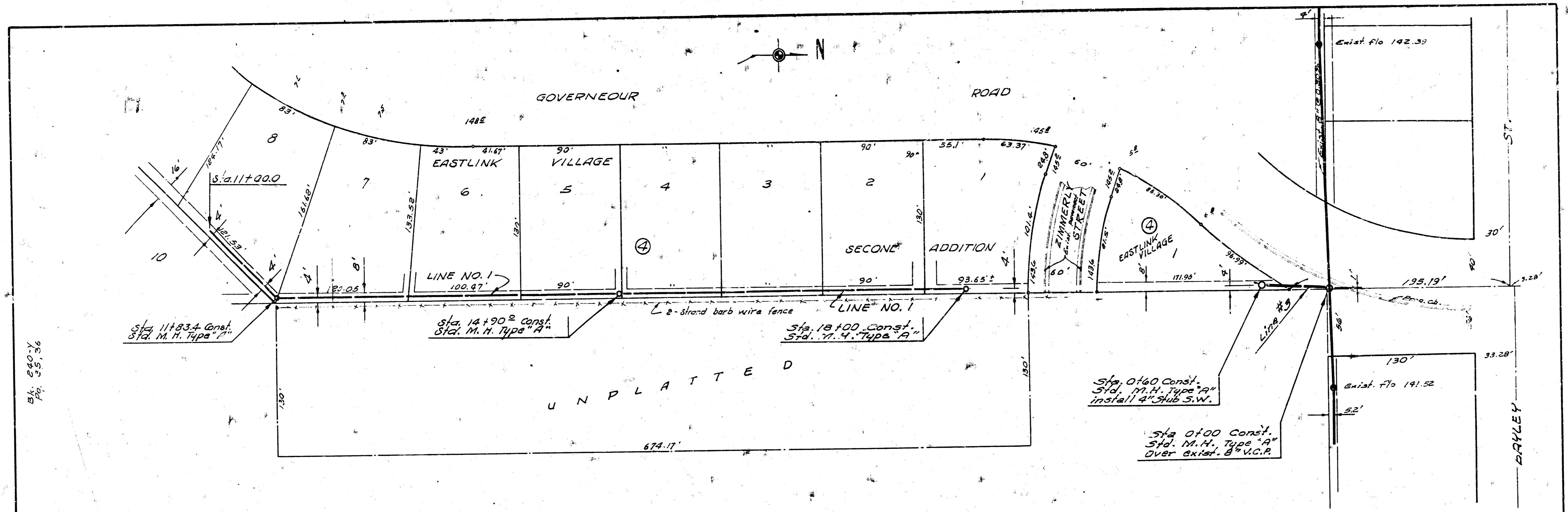
Checked by J. W. Smith  
 Plan by G. W. Smith, 2-24-67



**NOTE:**  
 Pavement replaced shall include  
 conc. base, steel curb & gutter &  
 asphaltic conc.

Plan Scale 1" = 40'  
 Profile Scale 1" = 4' Vert.

**LAT. 39, WAR INDUSTRIES SEWER**  
 CITY OF WICHITA, KANSAS  
 B. E. SMITH CITY ENGINEER  
 MARCH 1968 PROJECT NO. C26-28



LAT. 39, WAR INDUSTRIES SEWER  
PROJECT NO. C26-28