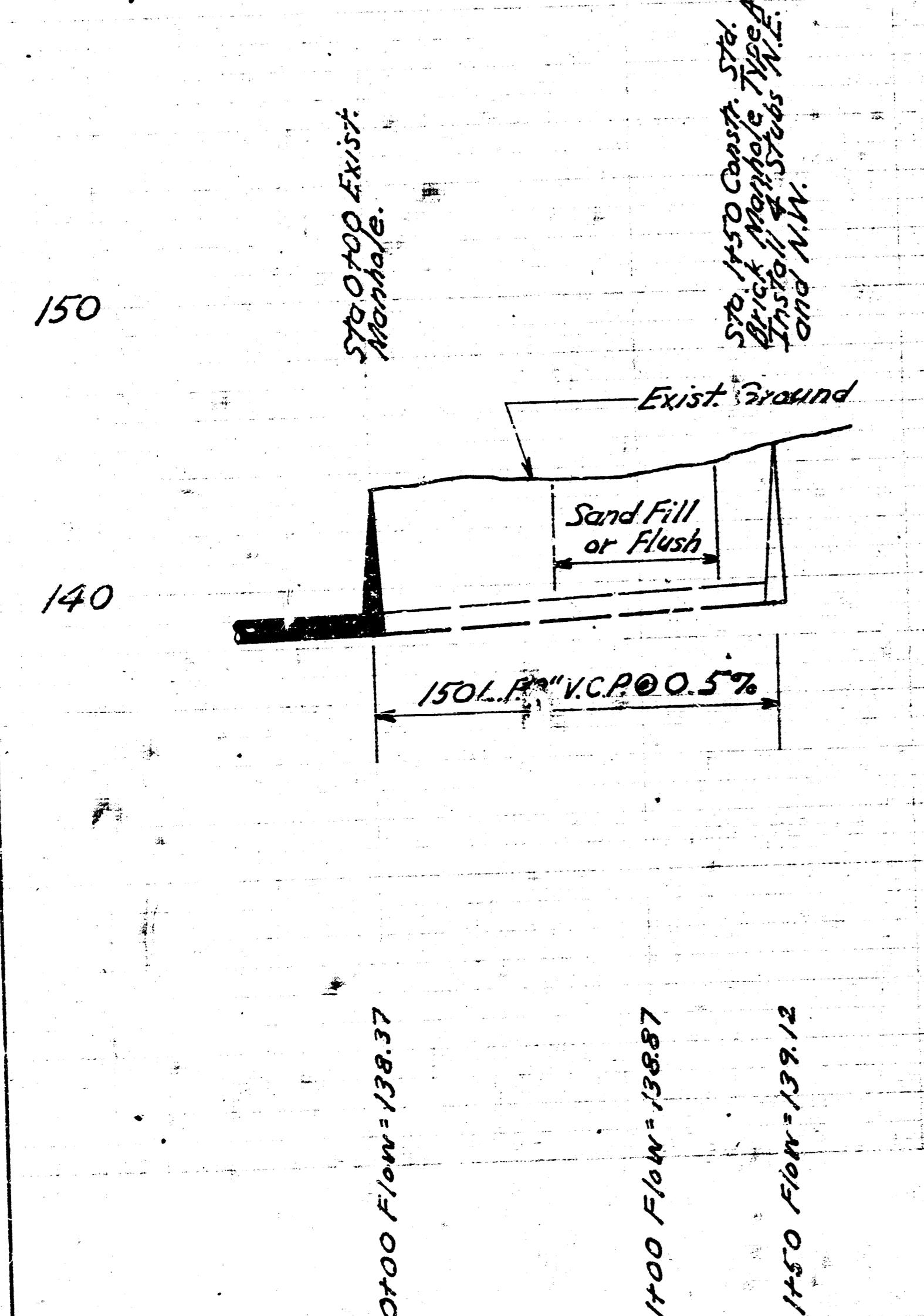
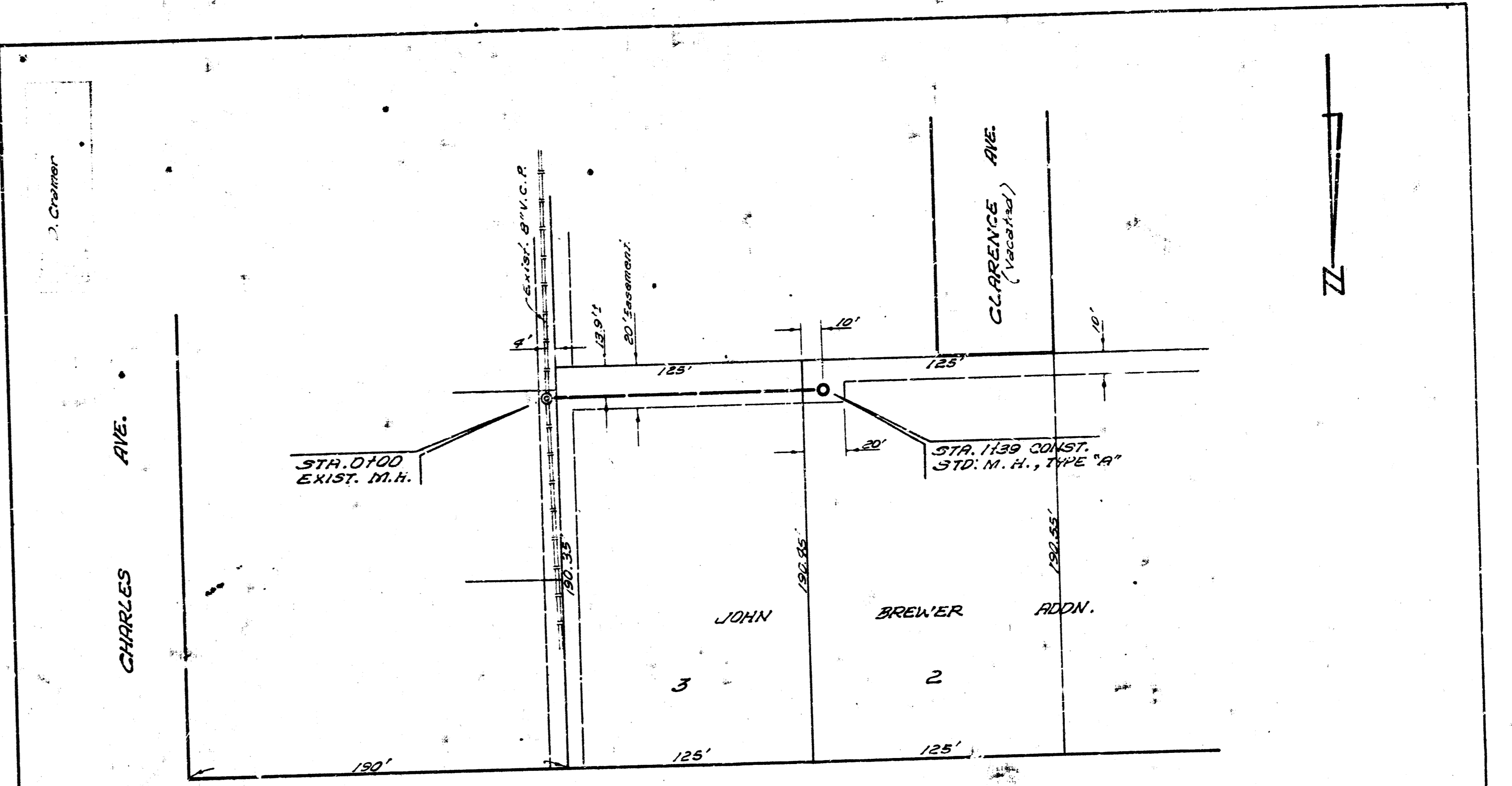


Note: Field engineer to verify flow elevation at exist. manhole prior to staking project.

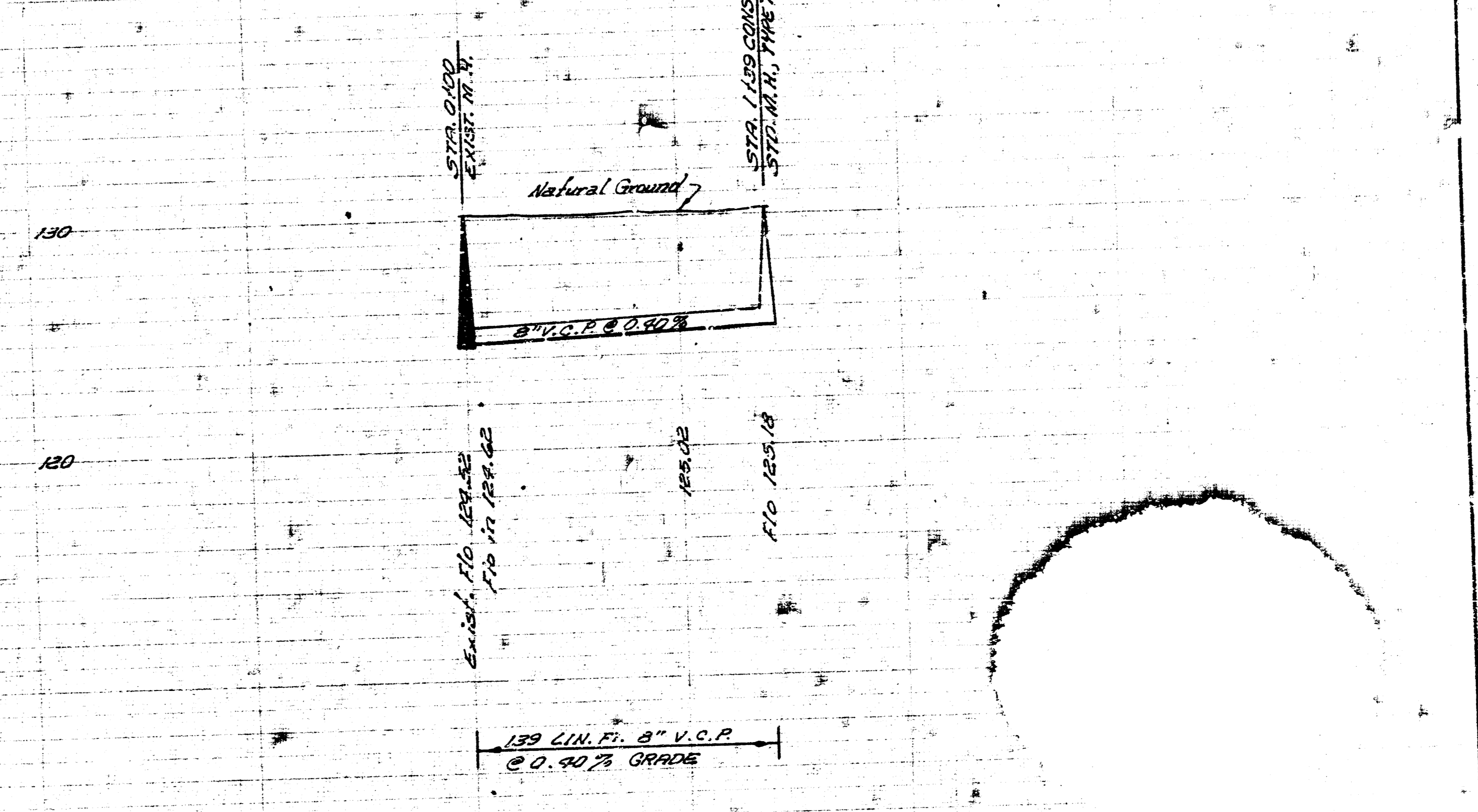
Plan Scale 1"=40'
 Profile Scale Horiz. 1"=40'
 Vert. 1"=4'



EXT. OF LAT. 39,
 WAR INDUSTRIES SEWER
 CITY OF WICHITA, KANSAS
 B. E. SMITH, CITY ENGINEER
 PRIVATE CONTRACT
 DATE: 1933



B.M. 133.95 S.W. Cor. conc. po. rear No. 3116 N. Charles



EXTENSION TO LAT. 16, SUB. 17, S.S. 22
 CITY OF WICHITA, KANSAS
 B. E. SMITH, CITY ENGINEER
 PRIVATE PROJECT
 DATE: OCT 1933