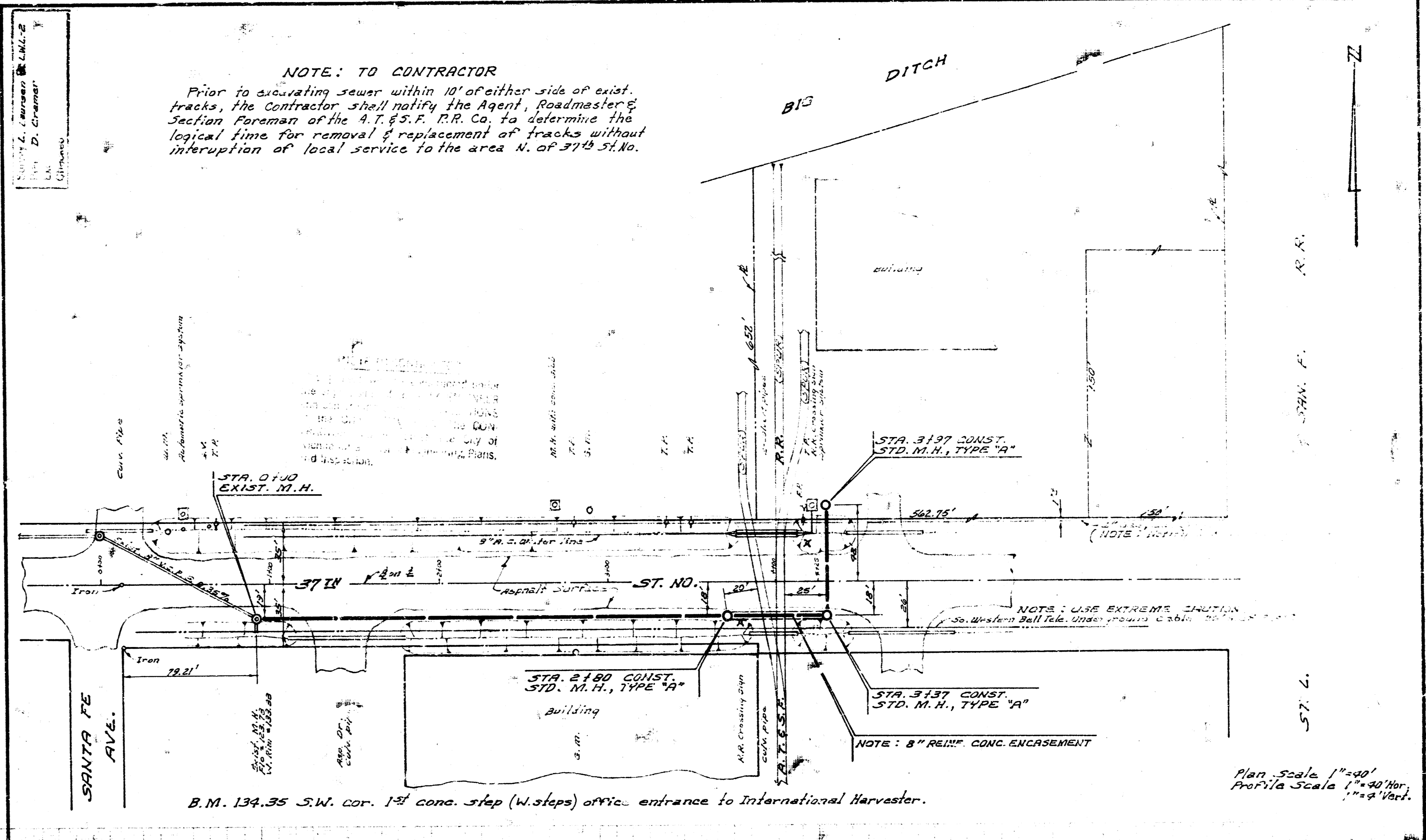


B.M. 140.30 "0" Top curb N.L. Rose & E.L. Mansfield
 B.M. 145.97 N.W. cor. conc. po. No. 8349 Rose Lane

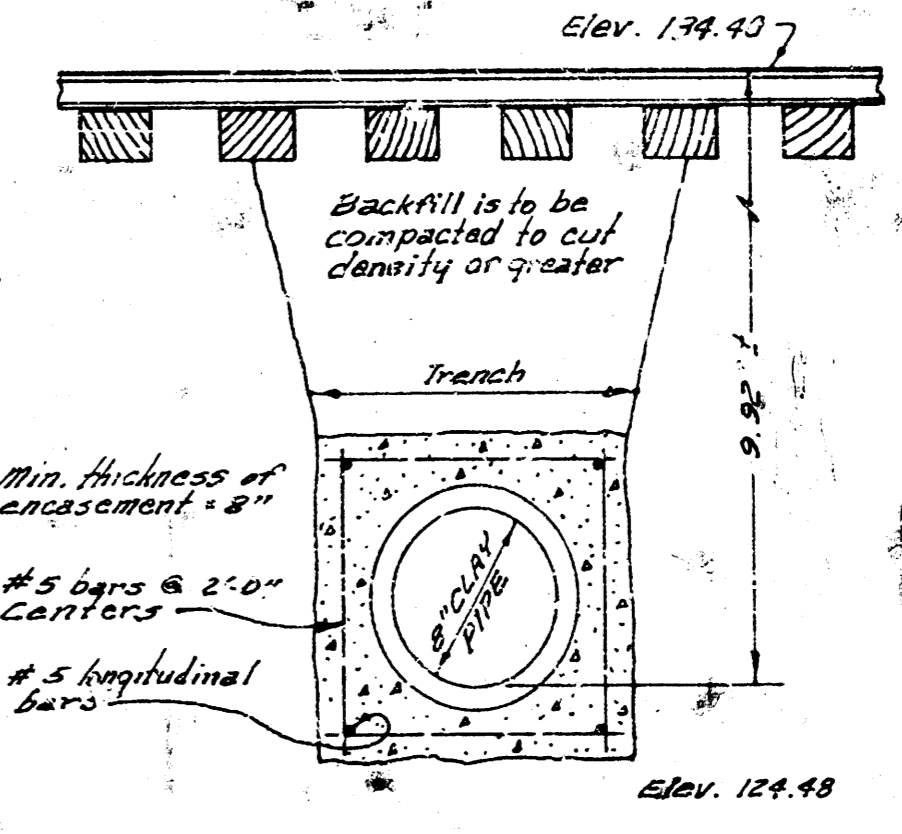
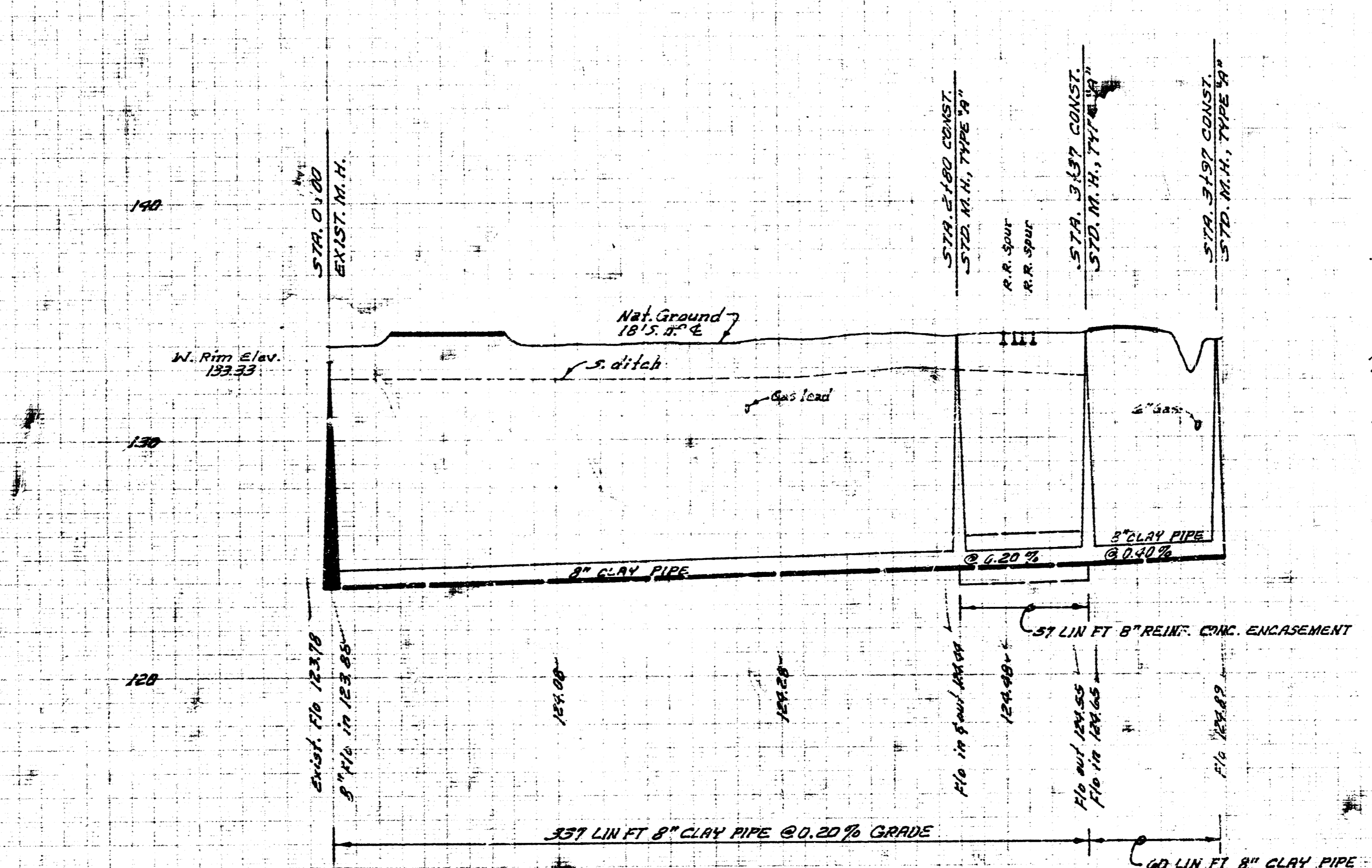
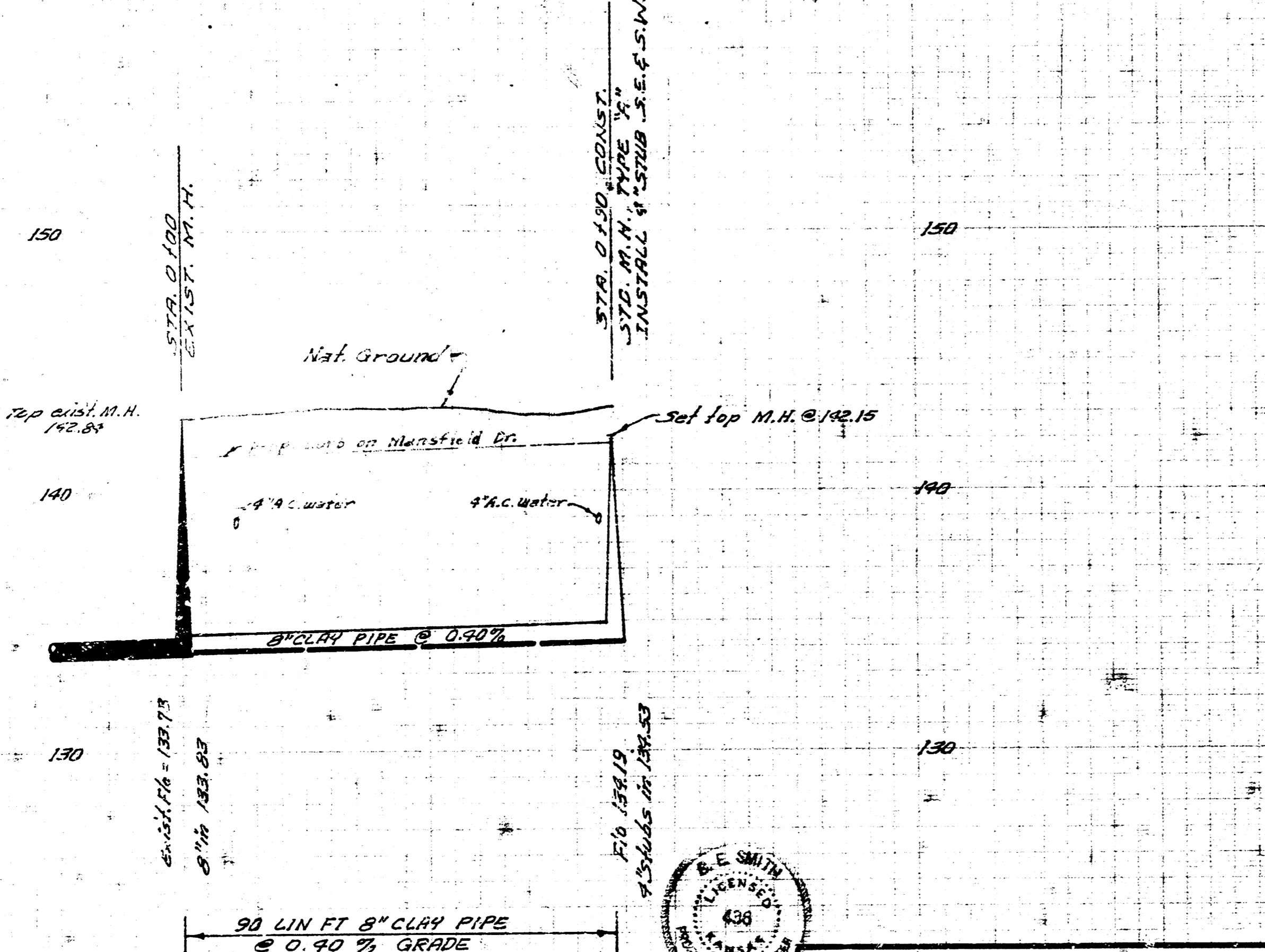
Plan Scale 1"=20'
 Profile Scale 1"=4' Vert.



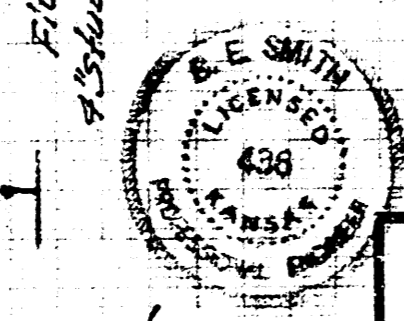
B.M. 134.35 S.W. cor. 1st conc. step (W.steps) office entrance to International Harvester.

Plan Scale 1"=40'
 Profile Scale 1"=4' Vert.

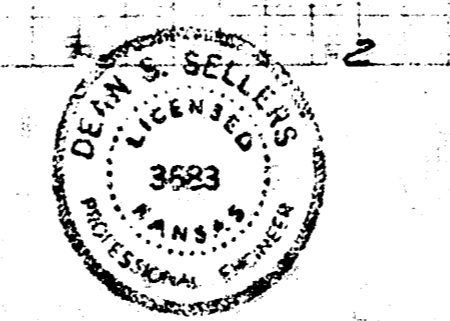
NOTE: TO CONTRACTOR
 Prior to excavating sewer within 10' of either side of exist. tracks, the Contractor shall notify the Agent, Roadmaster & Section Foreman of the A.T. & S.F. R.R. Co. to determine the logical time for removal & replacement of tracks without interruption of local service to the area N. of 37th St. No.



TYPICAL SECTION
 REINF. CONC. ENCLOSURE
 STA. 0180 TO 0187
 No Scale



LATERAL 45, W.I.S.
 CITY OF WICHITA, KANS.
 B.E. SMITH, CITY ENGINEER
 PROJ. NO. C29-93
 DATE: DEC. 1969



EXTENSION OF
 LAT. 45, SUB. 9, S.S. NO. 23
 CITY OF WICHITA, KANSAS
 B.E. SMITH, CITY ENGINEER
 PRIVATE PROJECT
 DATE: Dec. 1969