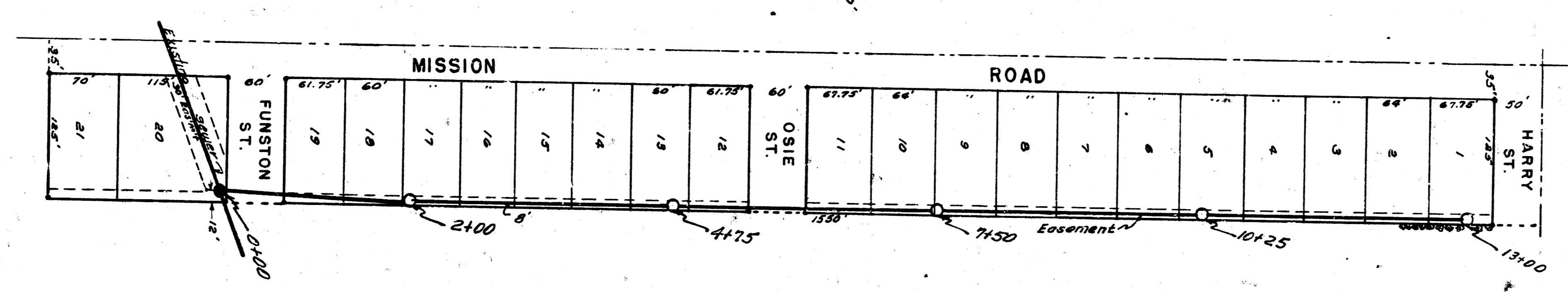
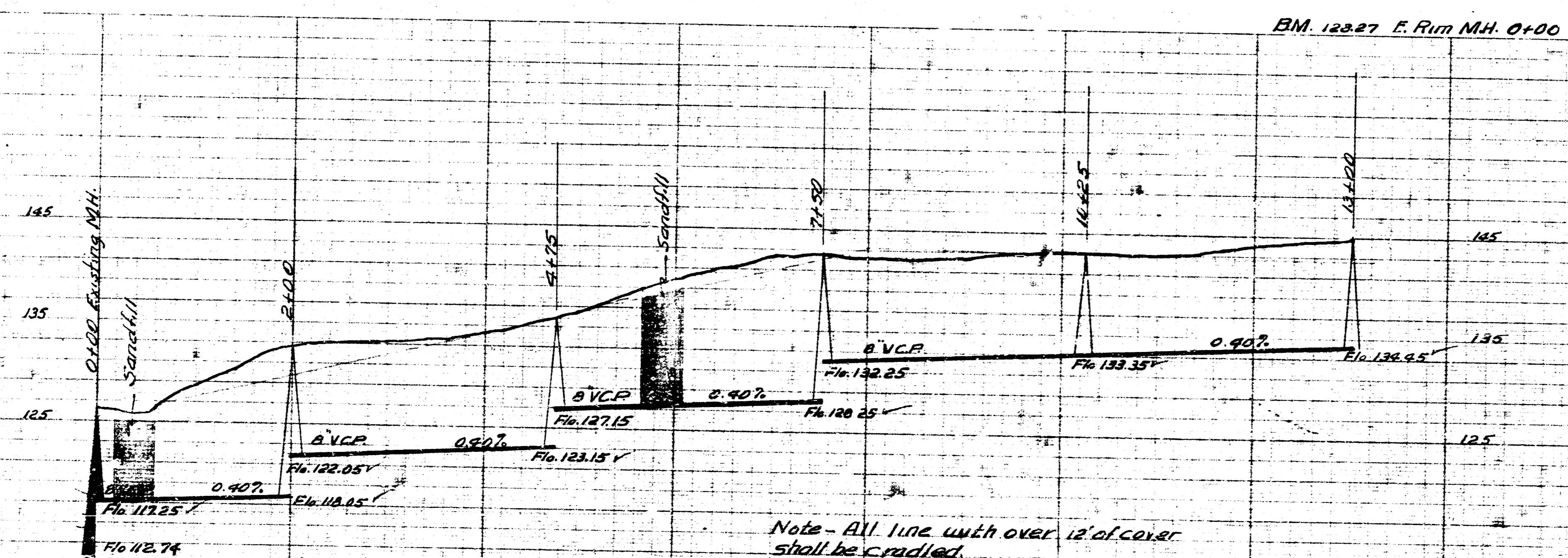


LINCOLN HILLS THIRD



Date 4-7-54  
 Drawn by M. Klein  
 Checked by B. B. No.



Note - All line with over 12" of cover shall be cradled.  
 Place a 6" stub to the south from 0+00. Elev. 116.25

L.P.T.7 W.S.  
 CITY OF WICHITA KANSAS  
 CIVIL ENGINEER  
 No. C. 24-1