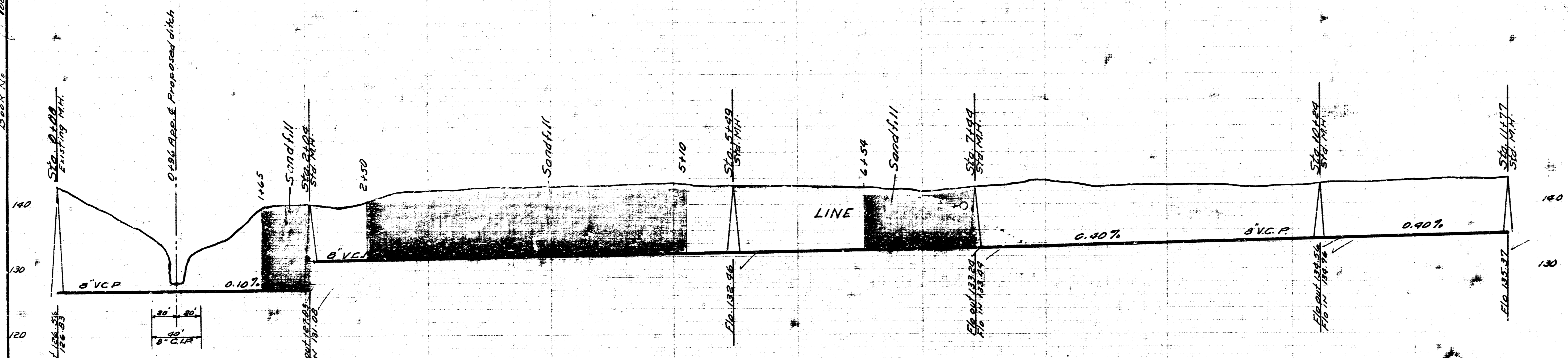


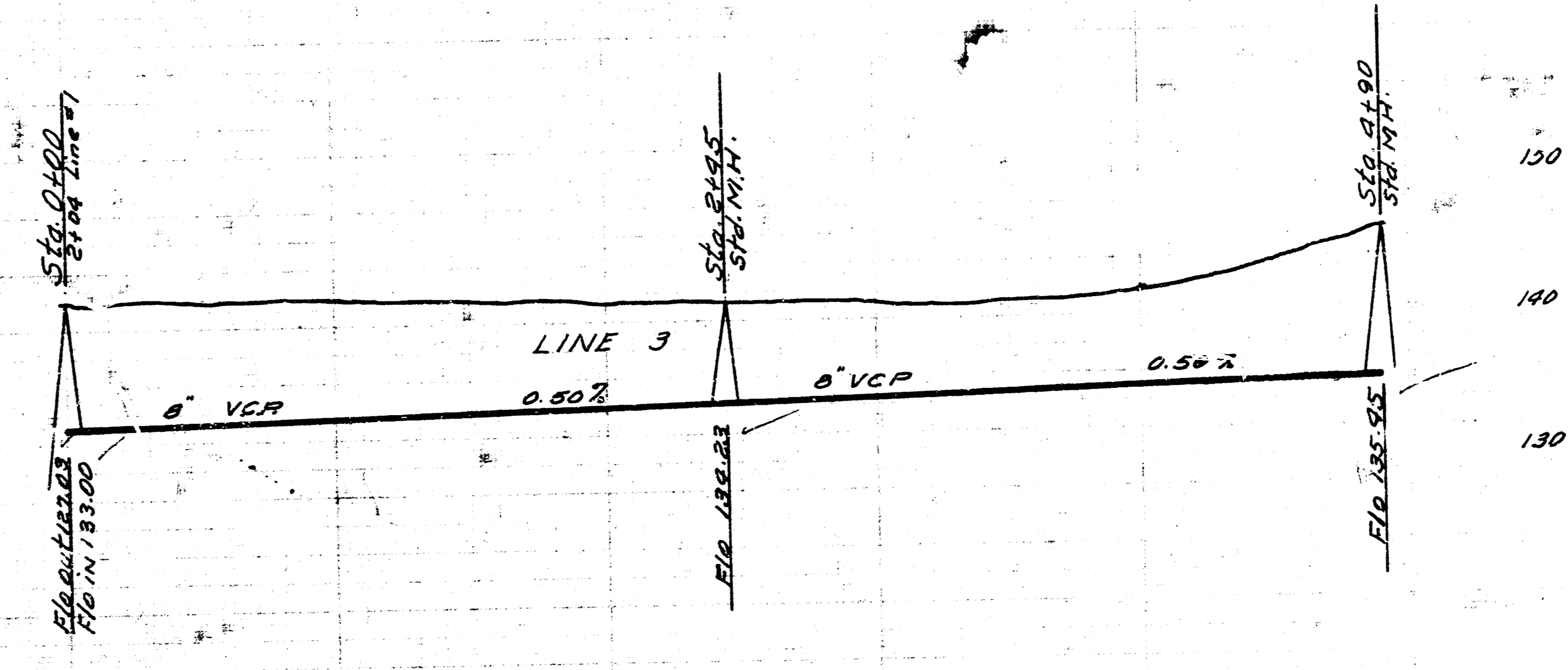
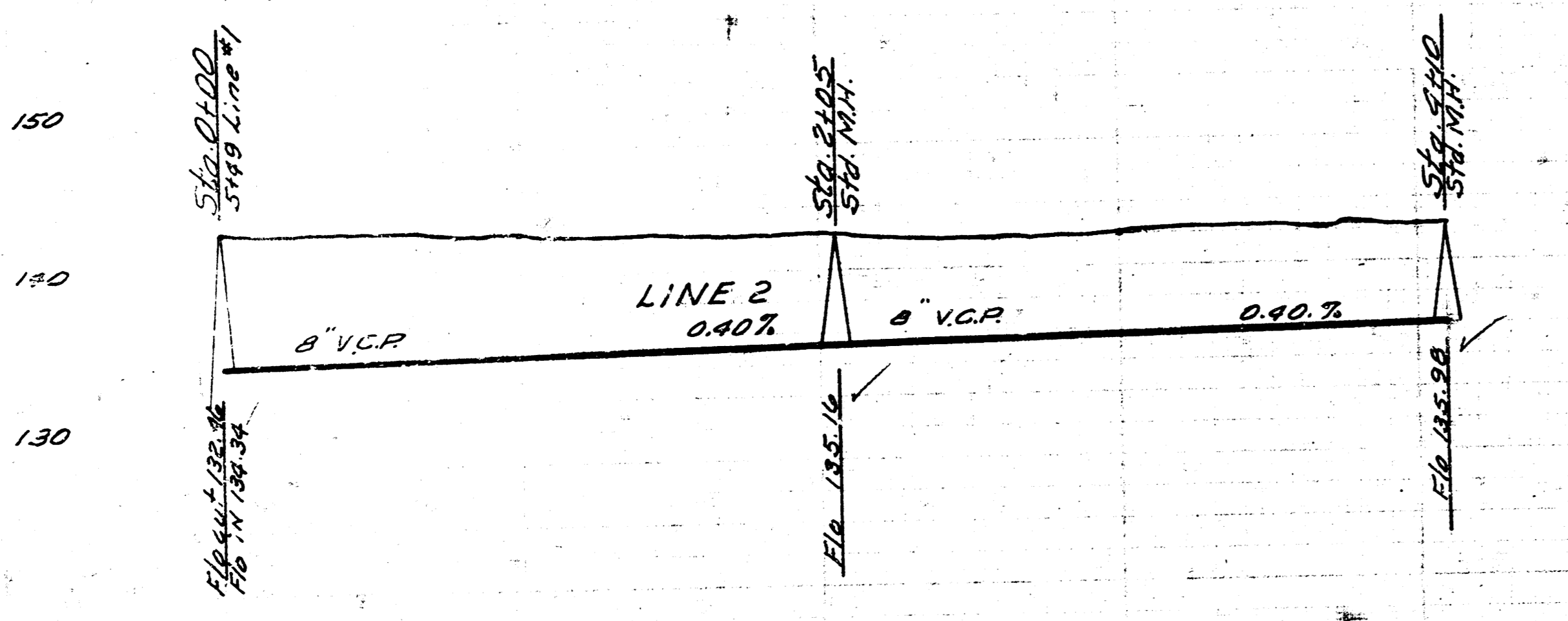
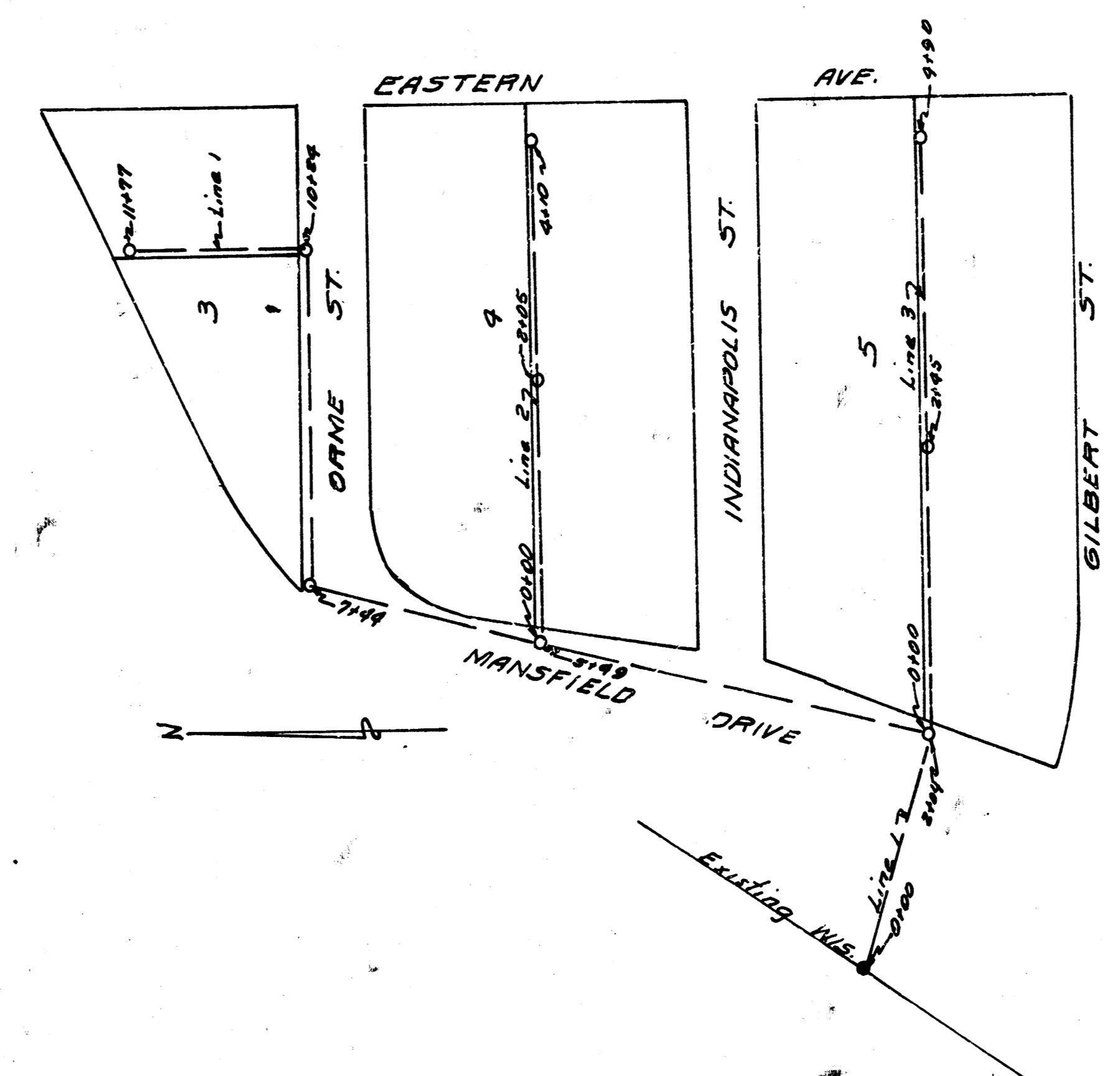
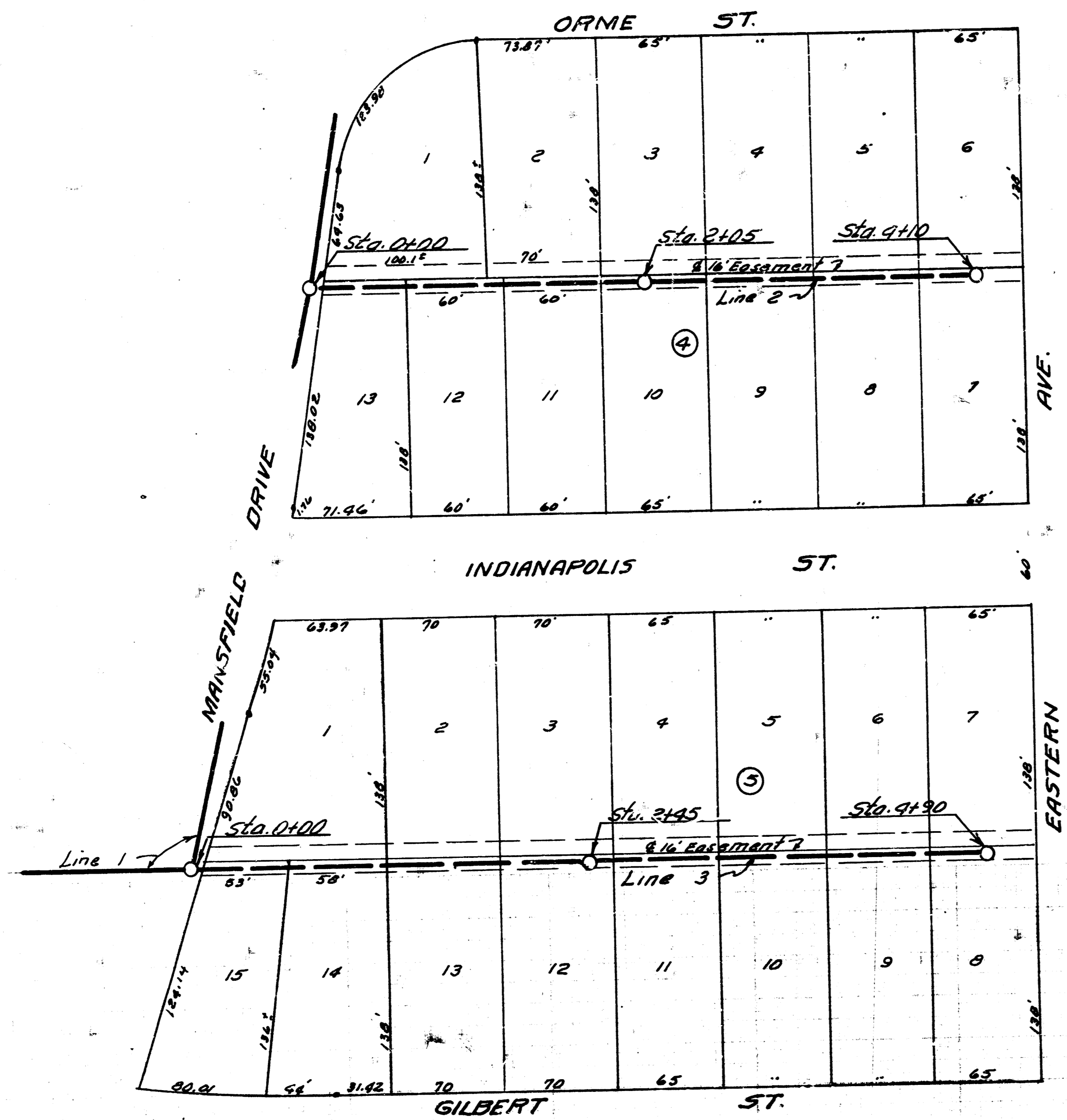
B.M. 143.06 N. rim of M.H. 0+00

Date 12-2-54
 Plan by McClain
 Checked by [unclear]
 Book No. 100-Y
 H-21



Note: C.I.P. shall be encased in 6" of concrete and 2 joints V.C.P. on either end of the C.I.P.

LAT 9 W15
 CITY OF WICHITA KANSAS
 BE SMITH, CITY ENGINEER
 Proj. No. C-24-71



LAT 9 W.I.S.
Sheet 2 of 2