

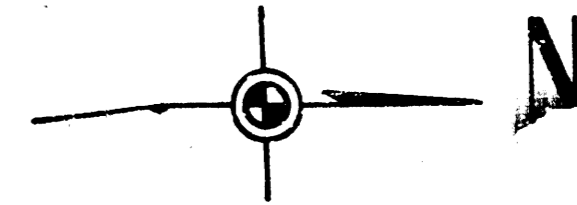
B. M. 143.11 "G" in Globe W. L. Eastern Ave.
N-26 Rose Lane. 1955

Sta. 0100.0
Const. Std. M.H. Type "A"
over exist. 8" S. S.

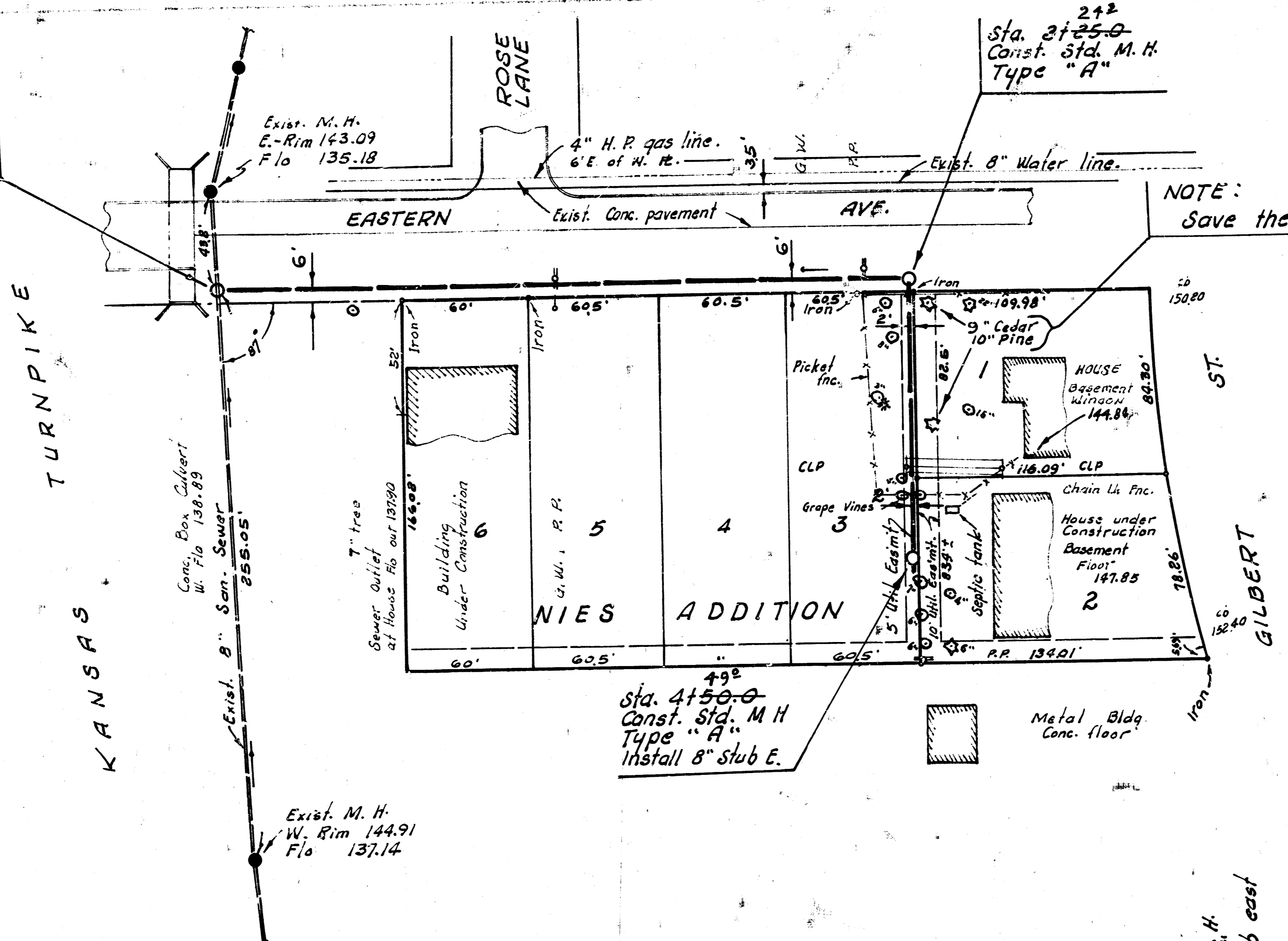
Exist. M.H.
E. Rim 143.09
Flo 135.18

Sta. 212
Const. Std. M.H.
Type "A"

NOTE:
Save these trees.



Plan Scale 1" = 40'
Profile Scale 1" = 5' Vert.



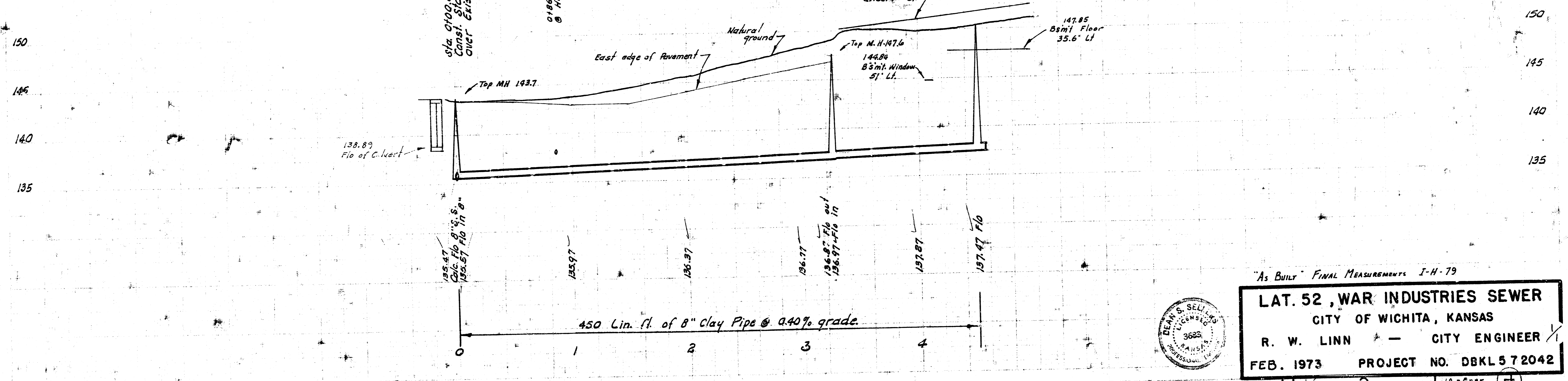
Sta. 4150.0
Const. Std. M.H.
Type "A"
Install 8" Stub E.

Exist. M.H.
W. Rim 144.91
Flo 137.14

Sta. 0100.0
Const. Std. M.H. Type "A"
Over exist. 8" S.S.

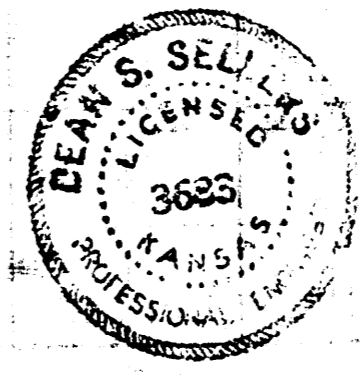
Sta. 3150.0
Const. Std. M.H.
Type "A"

Sta. 4150.0
Const. Std. M.H.
Type "A"
Install 8" Stub east



"As Built" FINAL MEASUREMENTS J-H-79

LAT. 52, WAR INDUSTRIES SEWER
CITY OF WICHITA, KANSAS
R. W. LINN - CITY ENGINEER
FEB. 1973 PROJECT NO. DBKL 572042



FILMED FROM THE BEST AVAILABLE COPY....