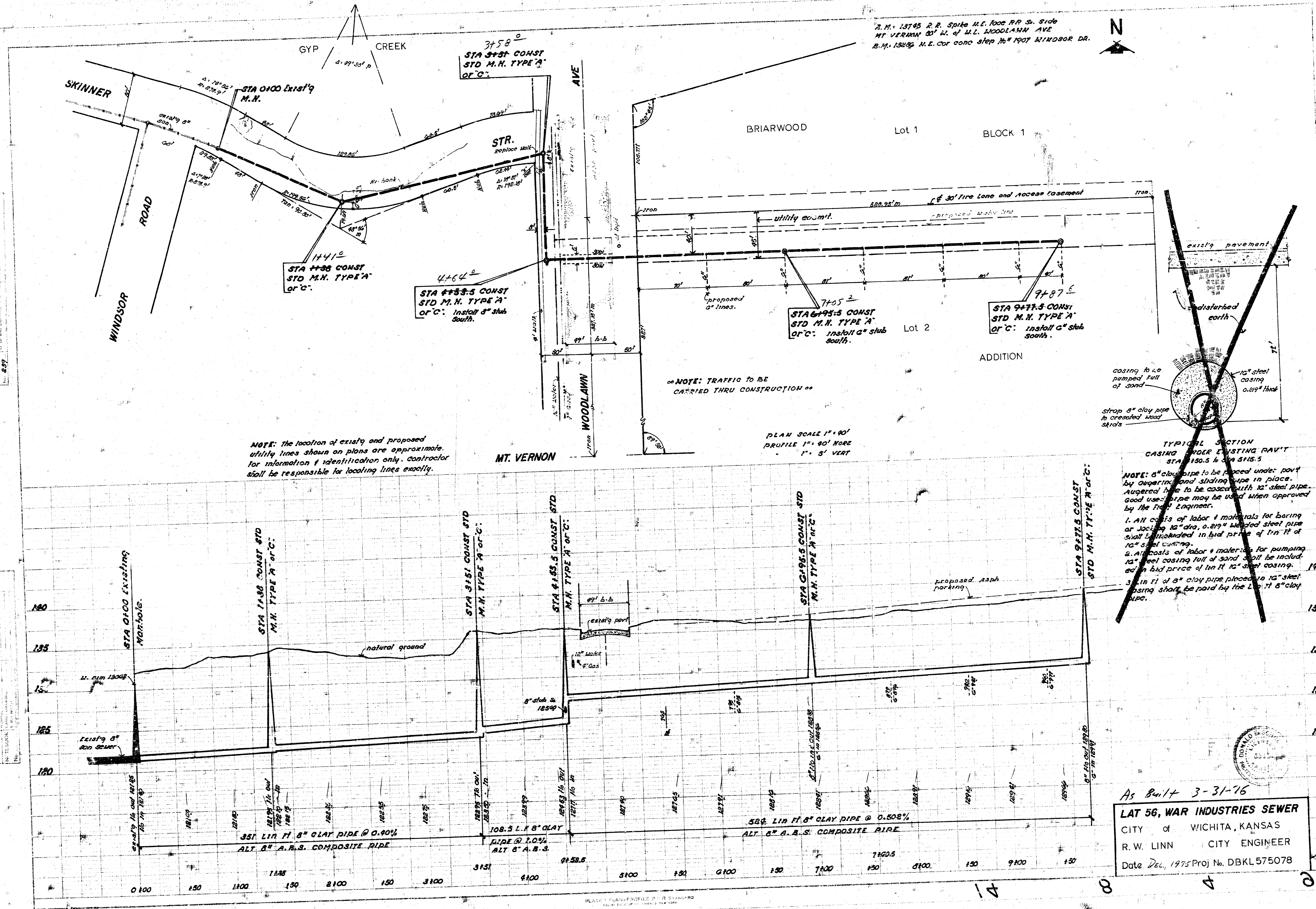


PLANS
 1. PLAN
 2. PROFILE
 3. SECTION
 4. TYPICAL SECTION
 5. DETAILS
 6. NOTES
 7. SPECIFICATIONS
 8. CONTRACT
 9. RECORD
 10. AS-BUILT

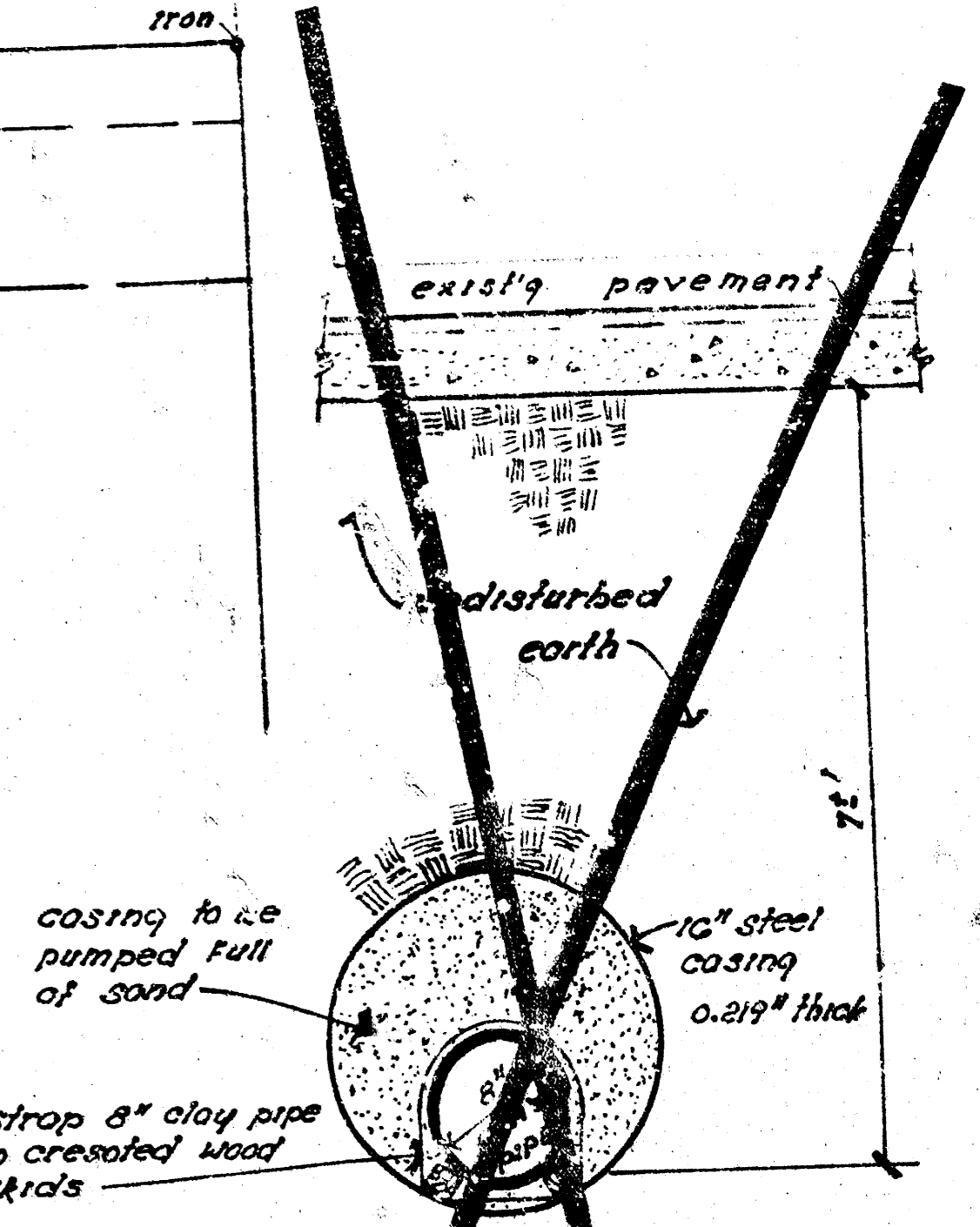
PROJECT
 1. PROJECT
 2. LOCATION
 3. DATE
 4. SHEET NO.



NOTE: The location of existing and proposed utility lines shown on plans are approximate. For information & identification only. Contractor shall be responsible for locating lines exactly.

NOTE: TRAFFIC TO BE CARRIED THRU CONSTRUCTION

PLAN SCALE 1" = 40'
 PROFILE 1" = 40' VERT
 1" = 5' VERT



TYPICAL SECTION
 CASING UNDER EXISTING PAV'T
 STA 150.5 to STA 515.5

NOTE: 8" clay pipe to be placed under pav't by augering and sliding pipe in place. Augered hole to be cased with 12" steel pipe. Good use pipe may be used when approved by the Field Engineer.

- All costs of labor & materials for boring or jacking 12" dia, 0.219" thick steel pipe shall be included in bid price of lin ft of 12" steel casing.
- All costs of labor & materials for pumping 12" steel casing full of sand shall be included in bid price of lin ft of 12" steel casing.
- 3.00 lin ft of 3" clay pipe placed in 12" steel casing shall be paid by the Lin ft 8" clay pipe.

As Built 3-31-76

LAT 56, WAR INDUSTRIES SEWER
 CITY of WICHITA, KANSAS
 R. W. LINN CITY ENGINEER
 Date Del. 1975 Proj No. DBKL575078