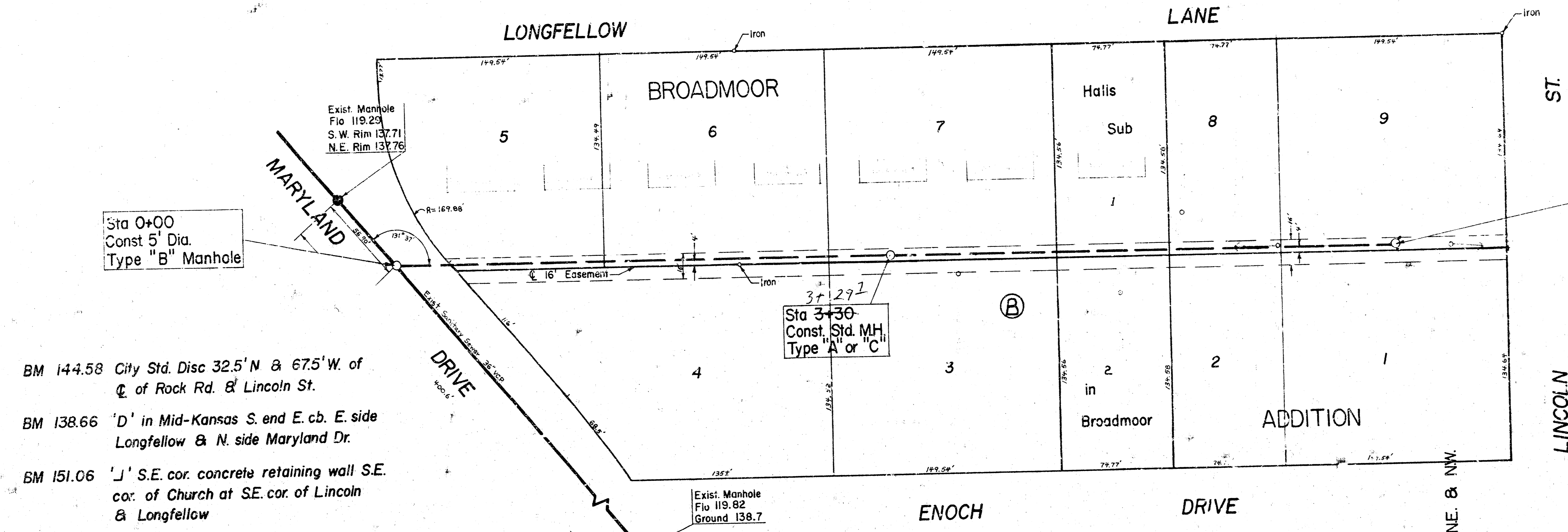


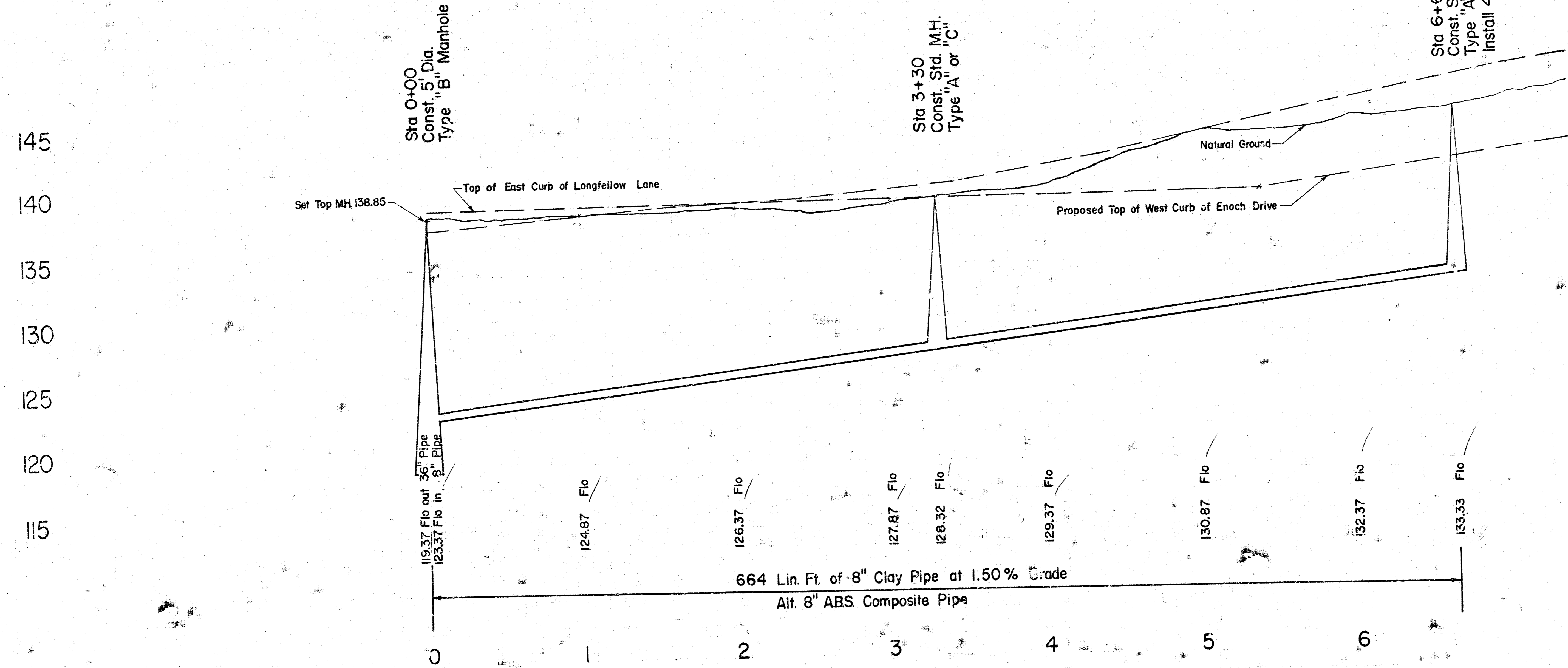
Plan Scale 1" = 40'  
 Profile Scale 1" = 40' Horiz. -  
 1" = 5' Vert.



- BM 144.58 City Std. Disc 32.5' N & 67.5' W. of  $\bar{C}$  of Rock Rd. & Lincoln St.
- BM 138.66 'D' in Mid-Kansas S. end E. cb. E. side Longfellow & N. side Maryland Dr.
- BM 151.06 'J' S.E. cor. concrete retaining wall S.E. cor. of Church at S.E. cor. of Lincoln & Longfellow

6+62.3  
 Sta 6+64  
 Const. Std. M.H.  
 Type "A" or "C"  
 Install 4" Stubs NE. & NW.

NOTE: FIELD ENGINEER TO DETERMINE EXACT LOCATION OF MANHOLE ON THE END OF THE LINE SUCH AS TO FACILITATE CONNECTION OF EXISTING BUILDING ON THE SOUTHEAST CORNER OF LINCOLN AND LONGFELLOW.



145  
 140  
 135  
 130  
 125  
 120  
 115

As built - 12-29-76  
**LAT. 57 WAR INDUSTRIES SEWER**  
**CITY OF WICHITA, KANSAS**  
 R. W. LINN — CITY ENGINEER  
 Project No. DBKL576019

