

LATERAL CI WAR INDUSTRIES SEWER

EXTENSION TO SERVE LOT 1

UNIVERSITY CONGREGATIONAL CHURCH ADDITION

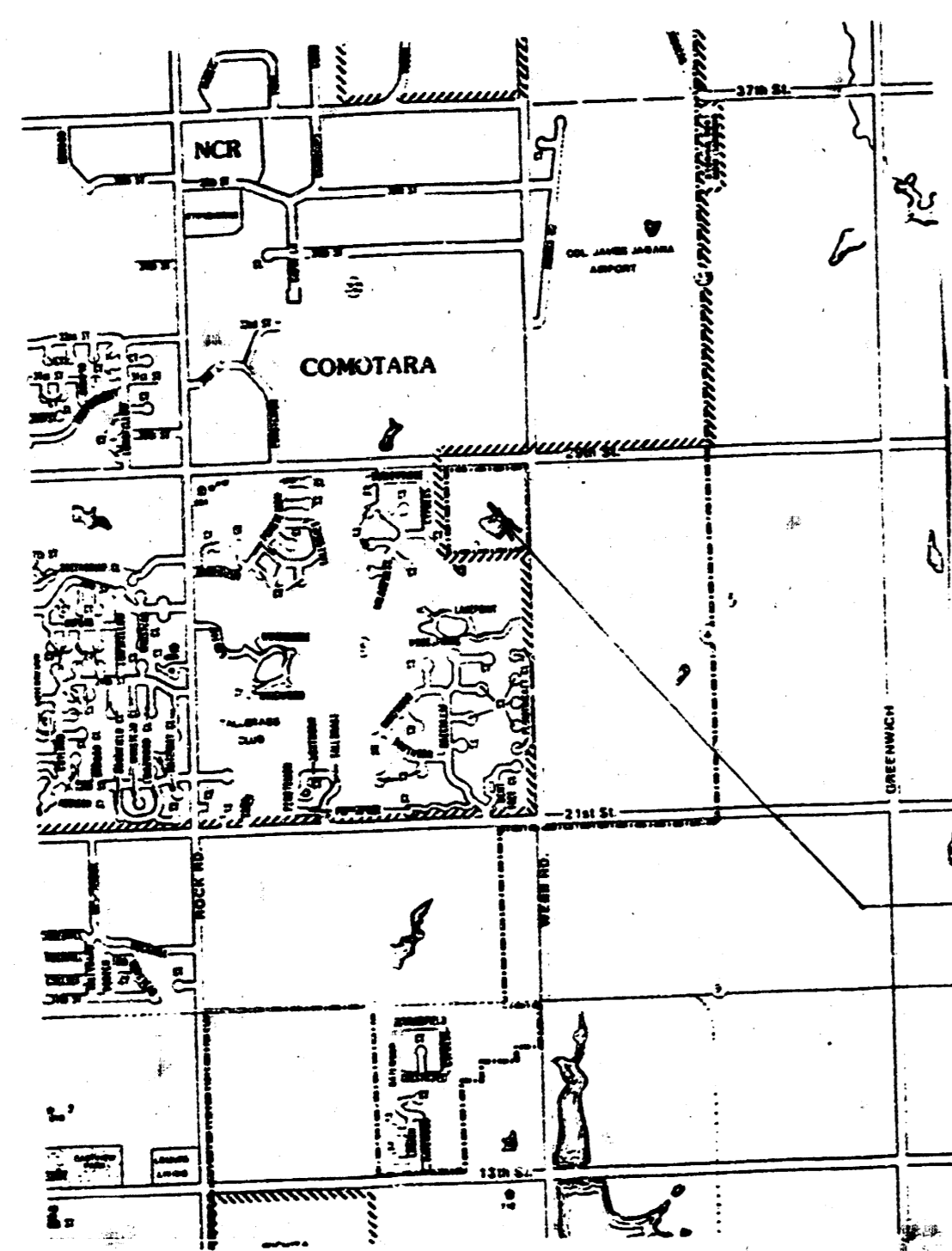
PROJECT NO.

468-76-245-81586-000-000-001

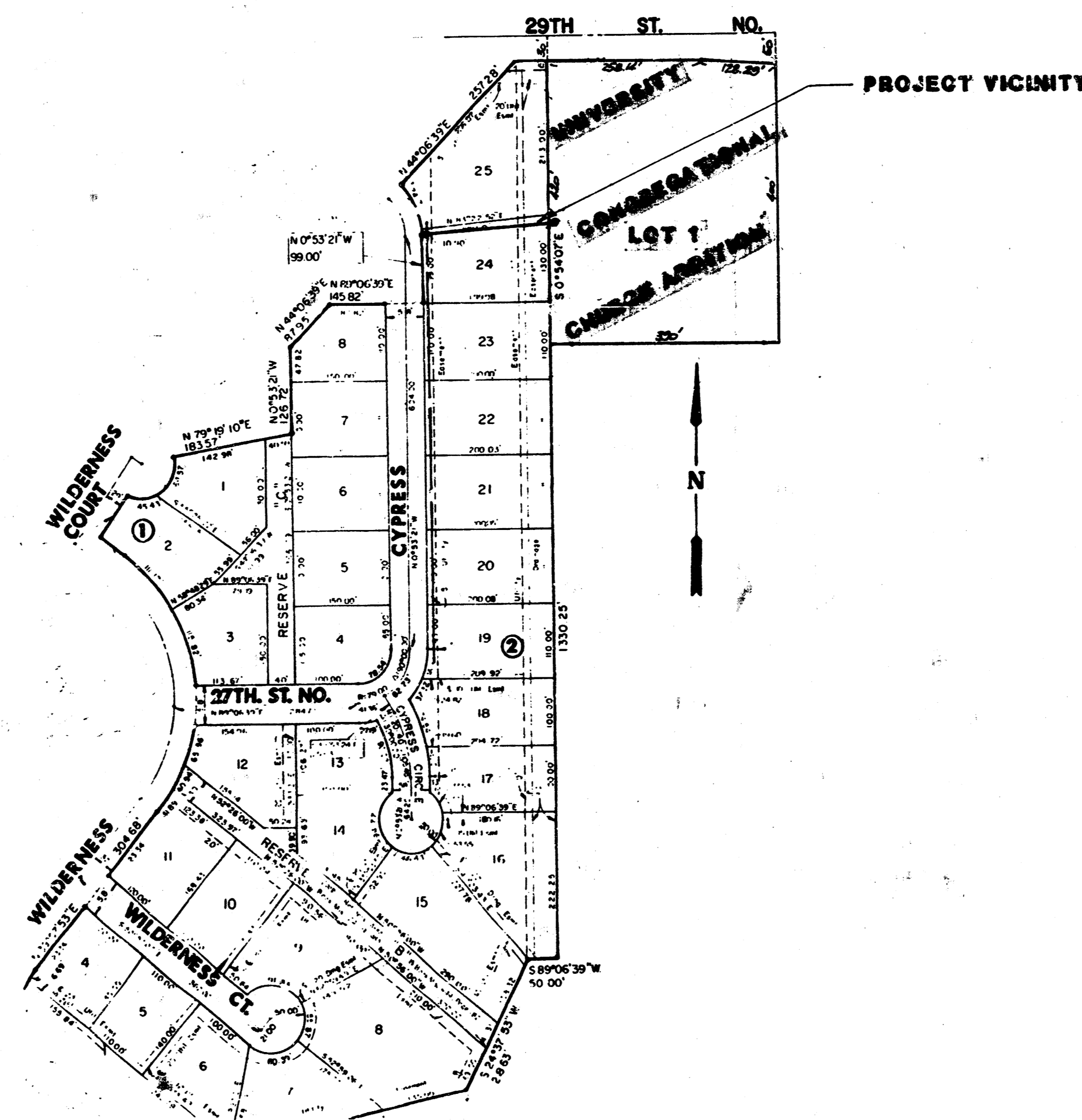
CITY OF WICHITA, KANSAS

MICHAEL E. LINDEBAK

CITY ENGINEER

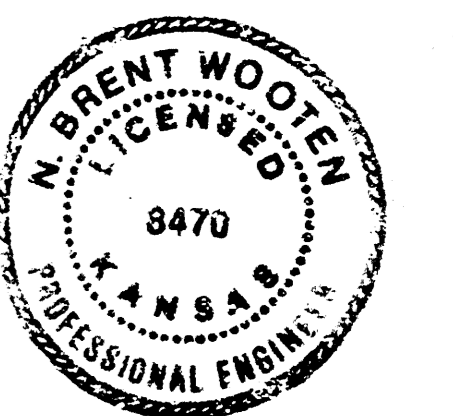


VICINITY MAP



GENERAL SANITARY SEWER NOTES

1. Underground utility service lines and overhead utility pole lines are to be adjusted as necessary by others prior to construction unless the plans specifically call for their adjustment by the Contractor. Existing utilities and their location, as shown on the plans, represent the best information obtainable for design. The Contractor will be required to work around existing utilities within the right-of-way which do not conflict with proposed construction.
2. Rubble from the removal of miscellaneous structures and excess excavation which is to be wasted shall be disposed of on sites to be provided by the Contractor. These sites shall be approved by the Engineer as to suitability, appearance and site location. Locations that, in the opinion of the Engineer, will leave an unsightly appearance will not be approved.
3. Trees and shrubs in public right-of-way which are in direct conflict with proposed new construction shall be removed by the Contractor with the Engineer's approval. Trees and shrubs which are not in direct conflict with proposed new construction shall be saved and protected from damage.
4. The Contractor shall give all property owners and/or tenants of developed property abutting the construction of this project a minimum of ten (10) days advance notice prior to start of construction.
5. The Contractor shall be responsible for maintaining continuous flow of sewage through construction. Contractor's proposed method for maintaining sewage flow shall be approved by the Engineer. Cost of maintaining flow of sewage through construction will not be paid for directly and this cost shall be considered as subsidiary to the other pay items of work.
6. The Contractor shall be responsible for preserving property irons. The Contractor will be required to re-establish any property irons which are damaged or destroyed by his construction operations. Such irons shall be re-established by a licensed land surveyor or a licensed professional engineer in accordance with state laws.



SEPT. 1986

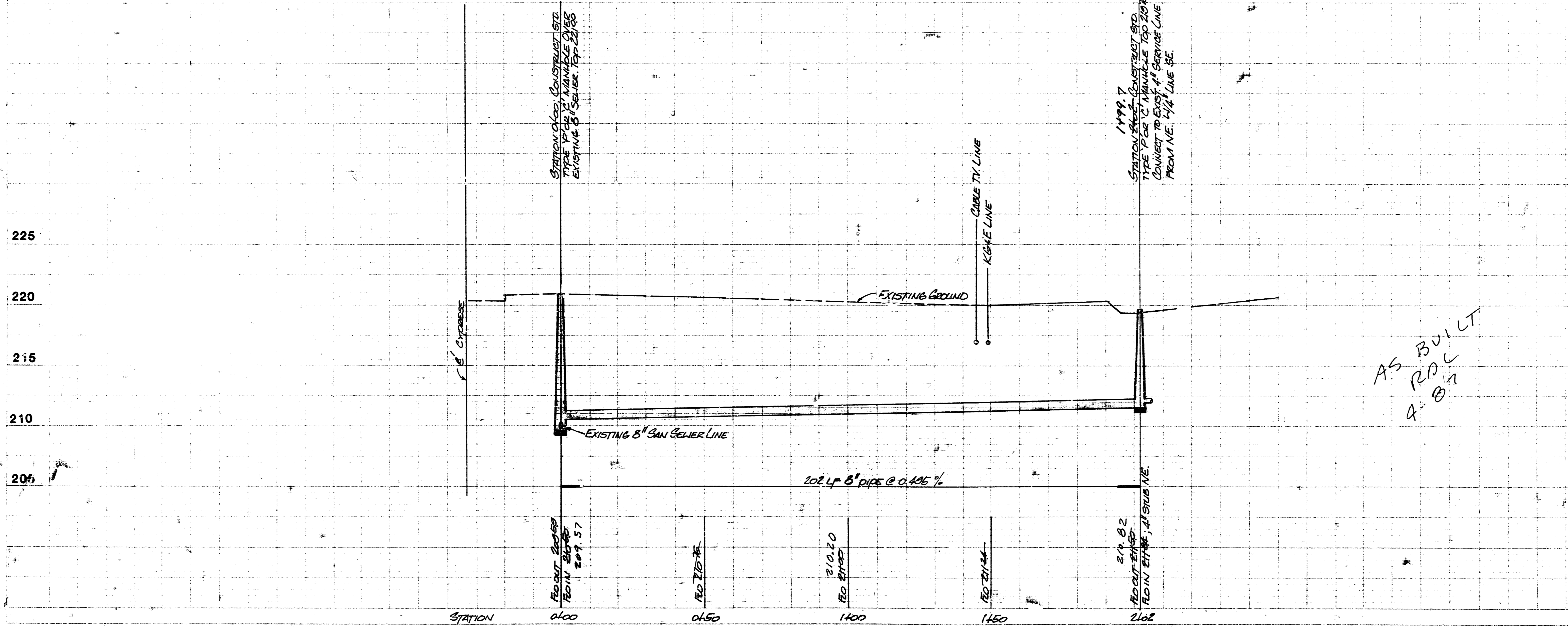
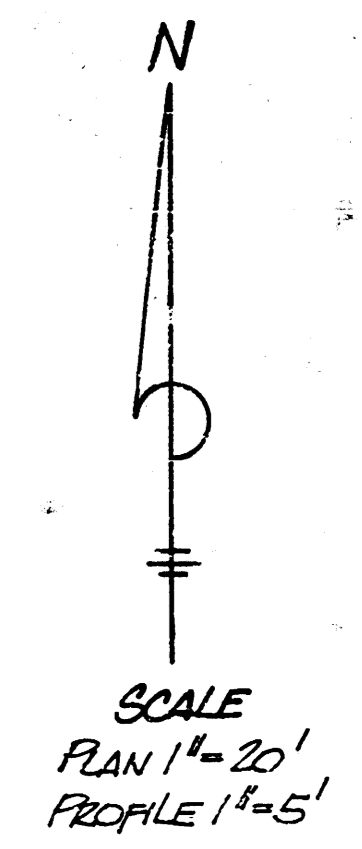
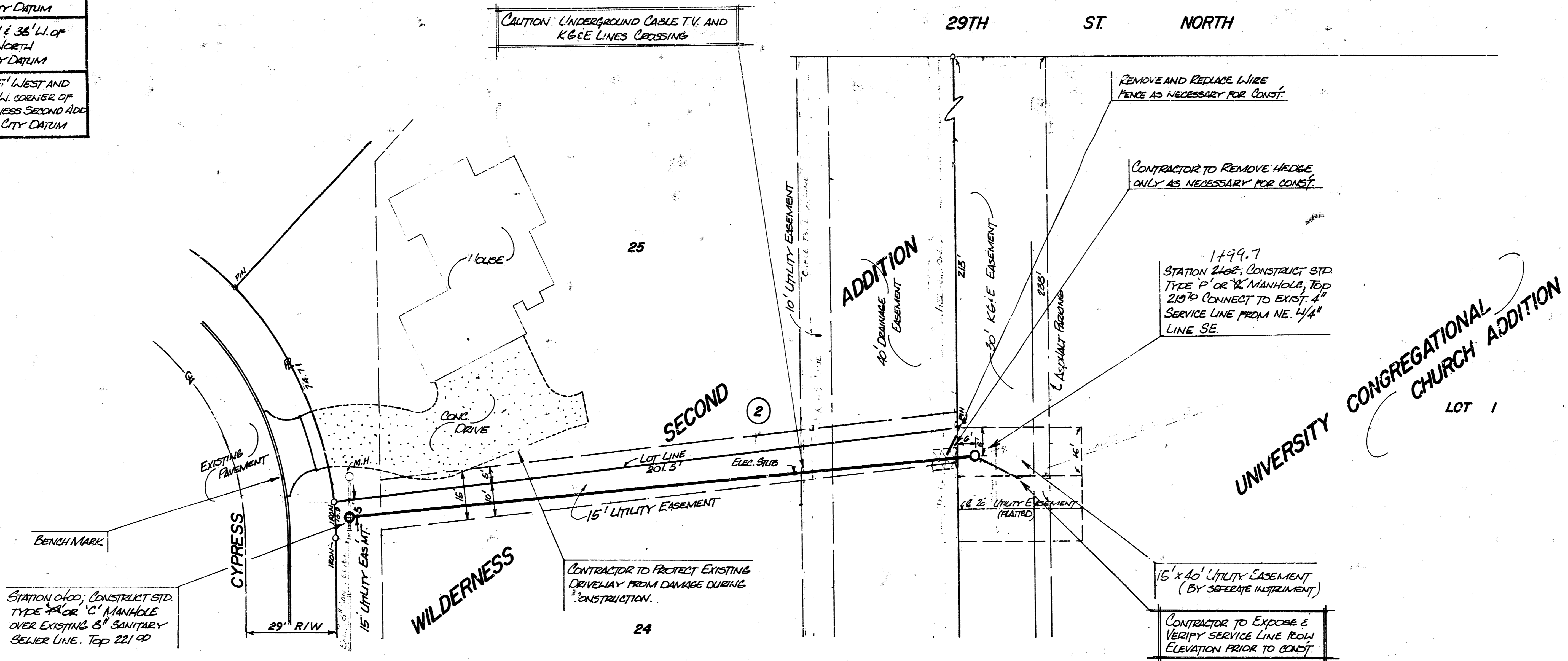
BAUGHMAN COMPANY, P.A.
SURVEYING & ENGINEERING
316262-7271 • 315 ELLIS • WICHITA, KANSAS 67211 1/2

FILMED FROM THE BEST AVAILABLE COPY

BENCH MARK: NAIL & CAP ON NO. LINE SECT. 5-27-2E AND E. LINE OF UNIV. CONG. CHURCH ADDITION. ELEV. 225.17 CITY DATUM

BENCH MARK: CITY STANDARD DIS. 44" N & 38" W OF E. CORNER AND E. 29TH ST. NORTH. ELEV. 220.53 CITY DATUM

BENCH MARK: CUT ON T&D CURB 16.5' WEST AND 8' NORTH OF CORNER @ S.W. CORNER OF LOT 25, BLK. 2 WILDERNESS SECOND ADD. ELEV. 220.80 CITY DATUM



LAT. 91

WAR INDUSTRIES SEWER

CITY OF WICHITA, KS

PROJ. NO.

468-76-245-81586-000-000-001

BAUGHMAN COMPANY, P.A.
SURVEYING & ENGINEERING

318282-7271 • 315 ELLIS • WICHITA, KANSAS 67211

2/2

PLATE 1-SINGLE PLAN AND PROFILE FULL LINE

FILMED FROM THE BEST AVAILABLE COPY.....