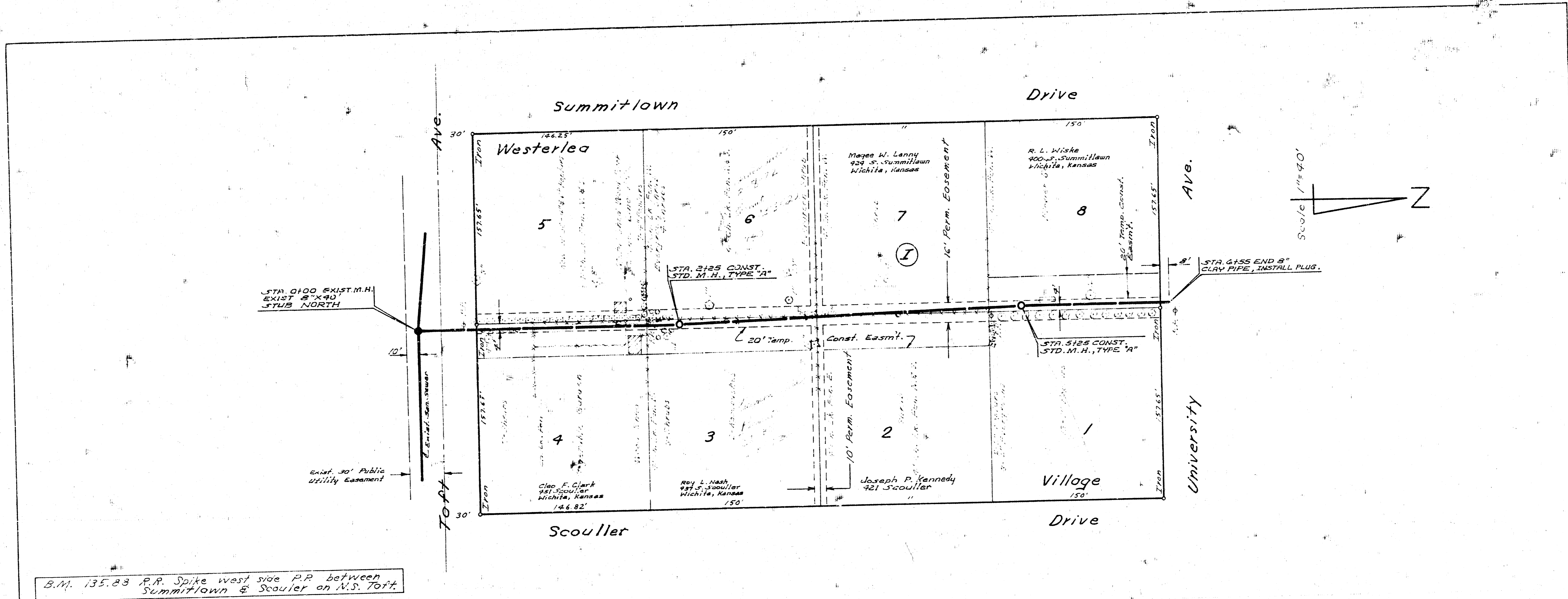
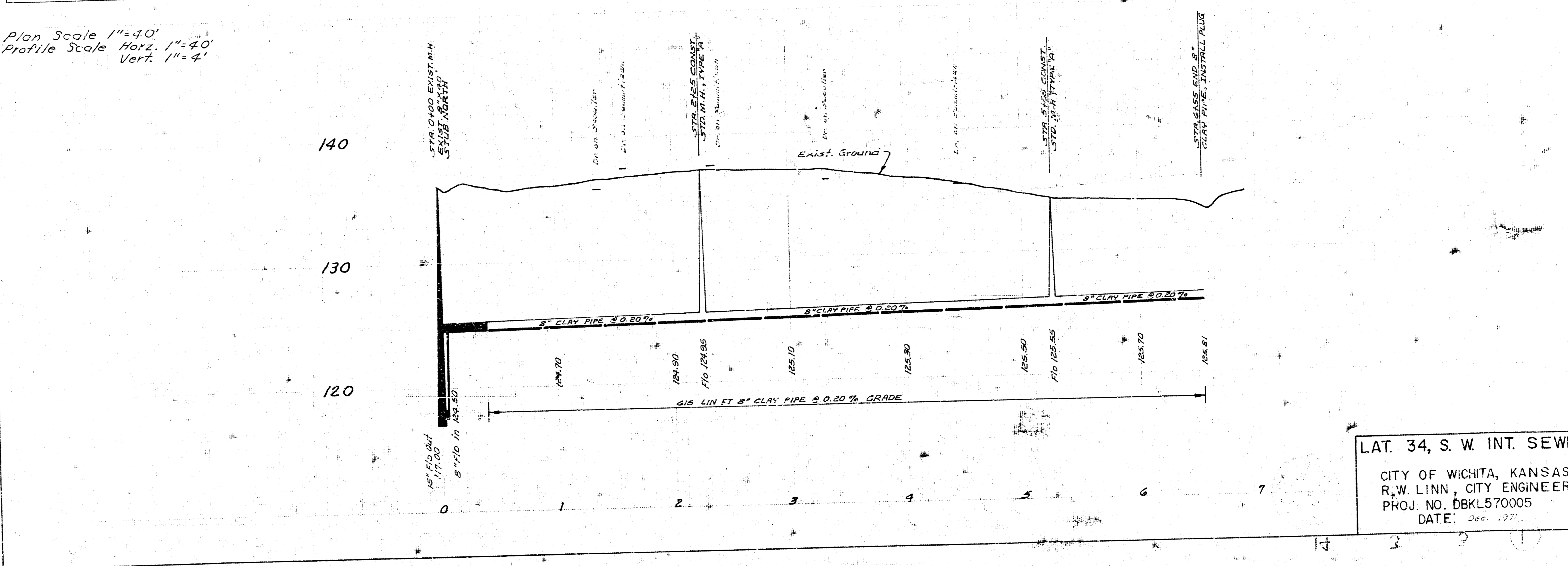


Summittown
 1/2" = 40'
 1/4" = 20'



B.M. 135.83 R.R. Spike west side P.P. between Summittown & Scouler on N.S. Fort.

Plan Scale 1" = 40'
 Profile Scale Horiz. 1" = 40'
 Vert. 1" = 4'



LAT. 34, S. W INT. SEWER
 CITY OF WICHITA, KANSAS
 R.W. LINN, CITY ENGINEER
 PROJ. NO. DBKL570005
 DATE: Dec. 1977