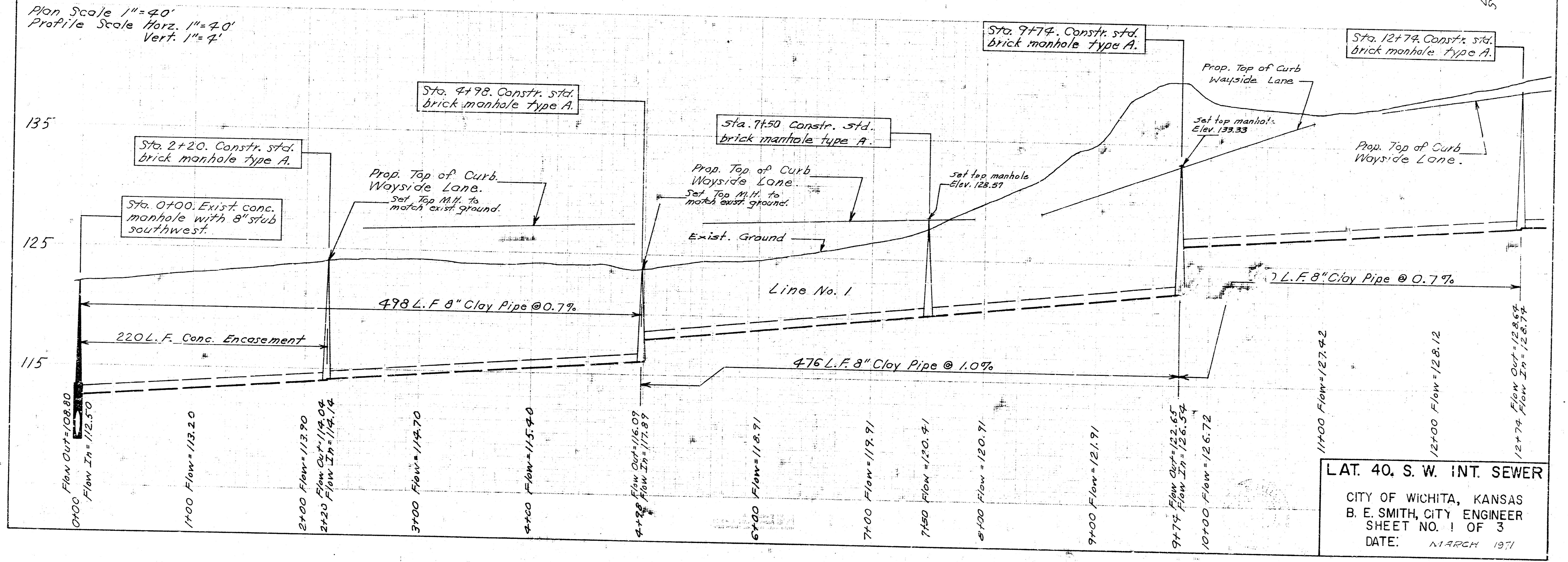
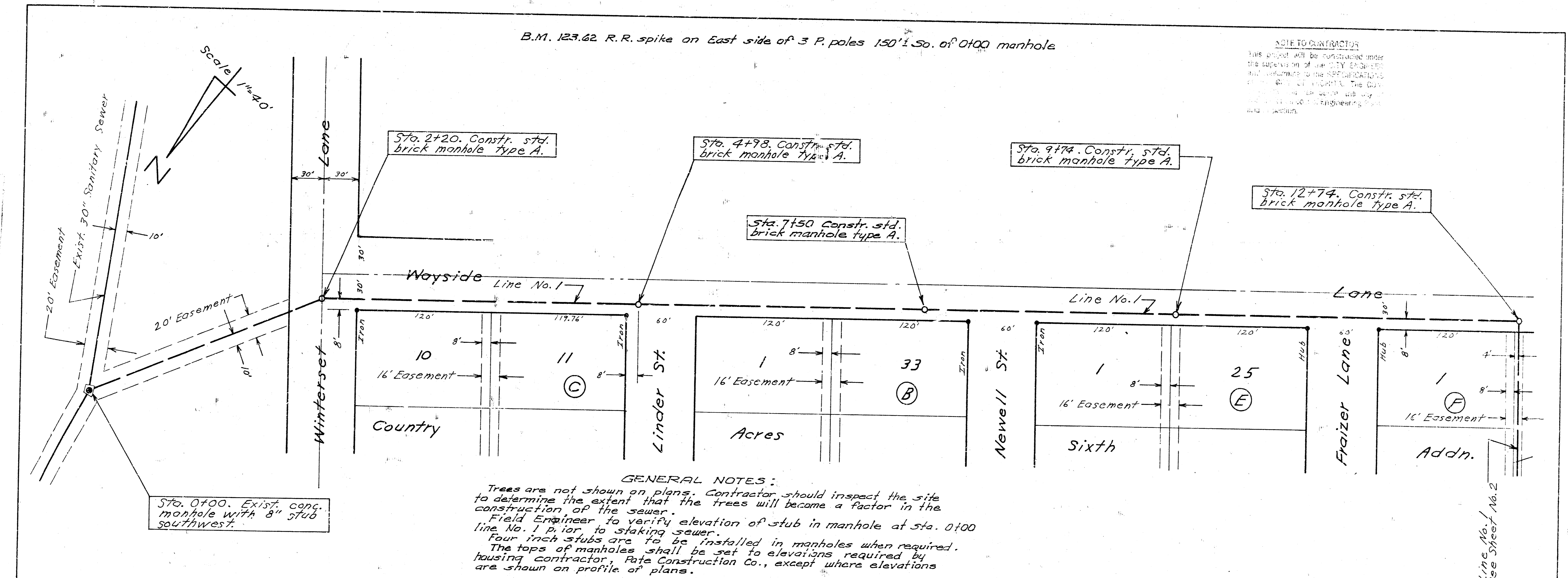


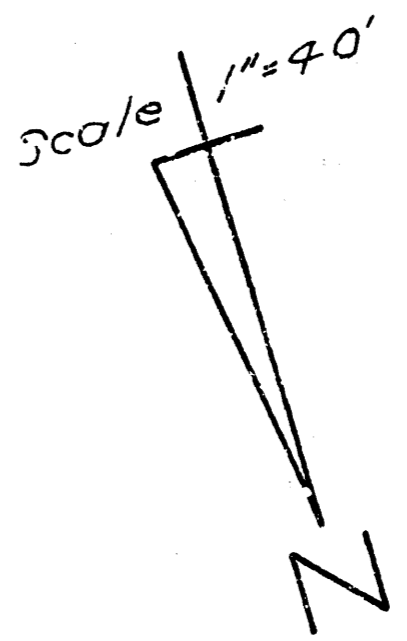
B.M. 123.62 R.R. spike on East side of 3 P. poles 150' S. of 0100 manhole

NOTE TO CONTRACTOR
 This project will be furnished under the supervision of the CITY ENGINEER and performed under the CITY ENGINEER'S LICENSE. The City Engineer will be responsible for the design and construction of the project.





B.M. 146.74 R.R. Spike E.S. of RR on W.S. of Ridge Road at S.E. of Newell St.



Plan Scale 1"=40'
Profile Scale Horiz. 1"=40'
Vert. 1"=4'

LAT. 40, S. W. INT. SEWER
SHEET NO. 2 OF 3

