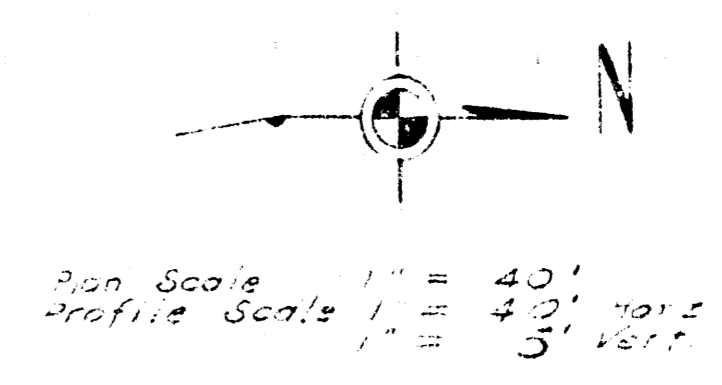
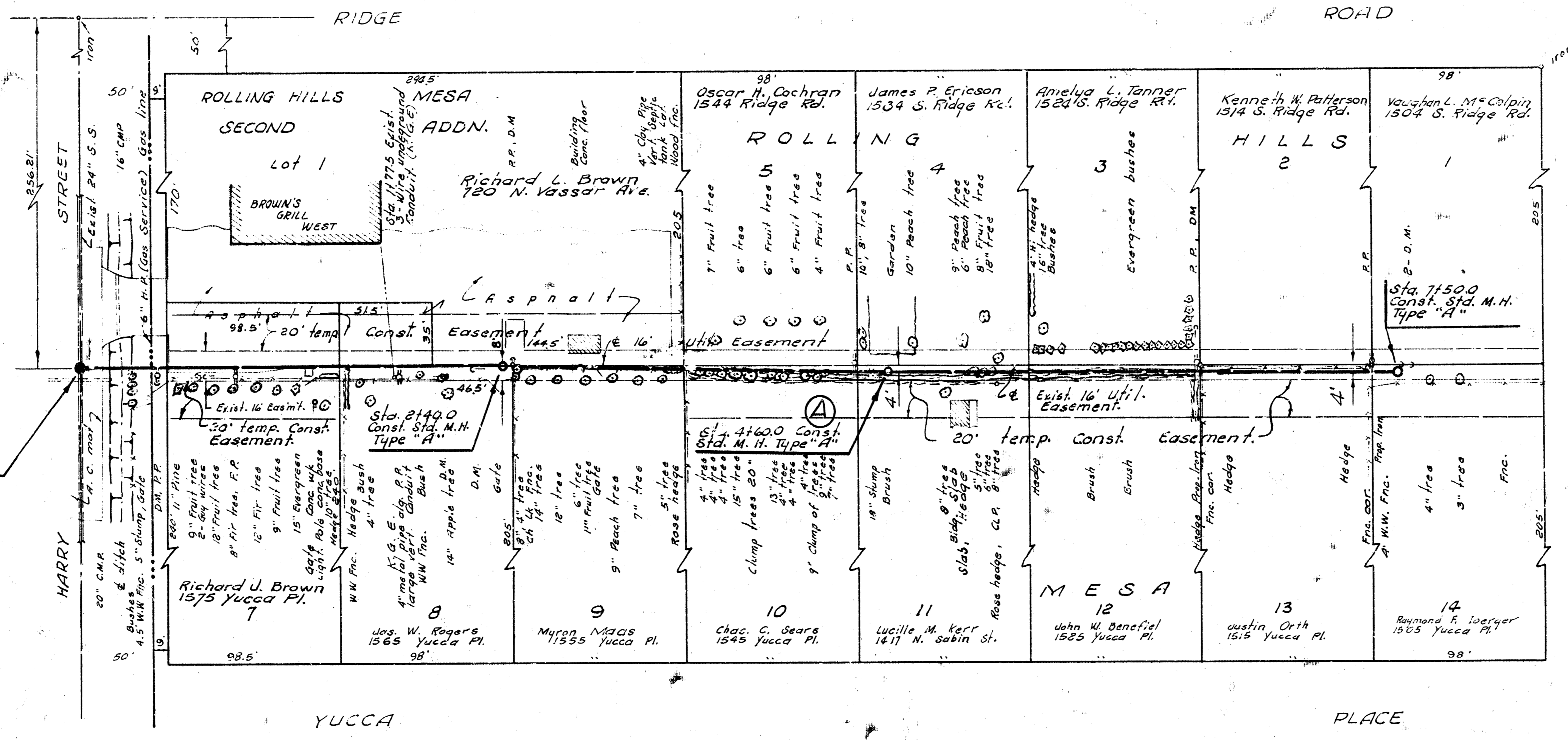


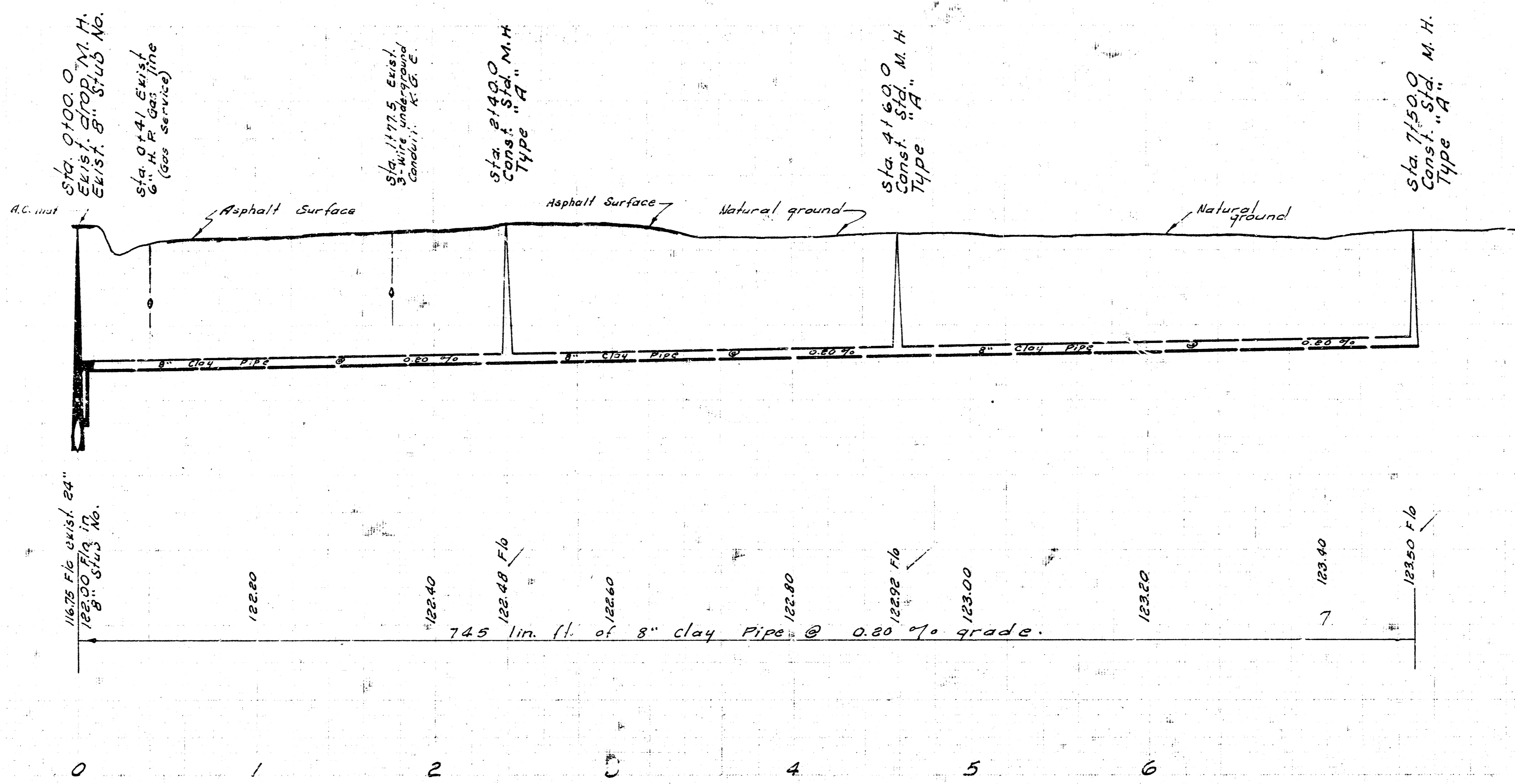
B.M. 130.02 R.R. Spike N.S. of P.P. on S.E. cor. Mariposa and Yucca.  
 B.M. 132.49 R.R. Spike S.S. of P.P. on S.E. cor. Mariposa and Yucca.

**NOTE TO CONTRACTOR:**  
 Call Mr. R. F. Jennings (K-4-E) when construction begins near underground conduit.  
 Ph. No. AM 4-1111 Ext 248

Sta. 0100.0  
 Exist. drop M.H.  
 Exist. B" Stud No.



135  
130  
125  
120  
115



135  
130  
125  
120  
115

LAT. 41, S.W. INTERCEPTOR SEWER  
 CITY OF WICHITA, KANSAS  
 R. W. LINN - CITY ENGINEER  
 MAR. 1972 PROJECT NO. DBKL 5 71012