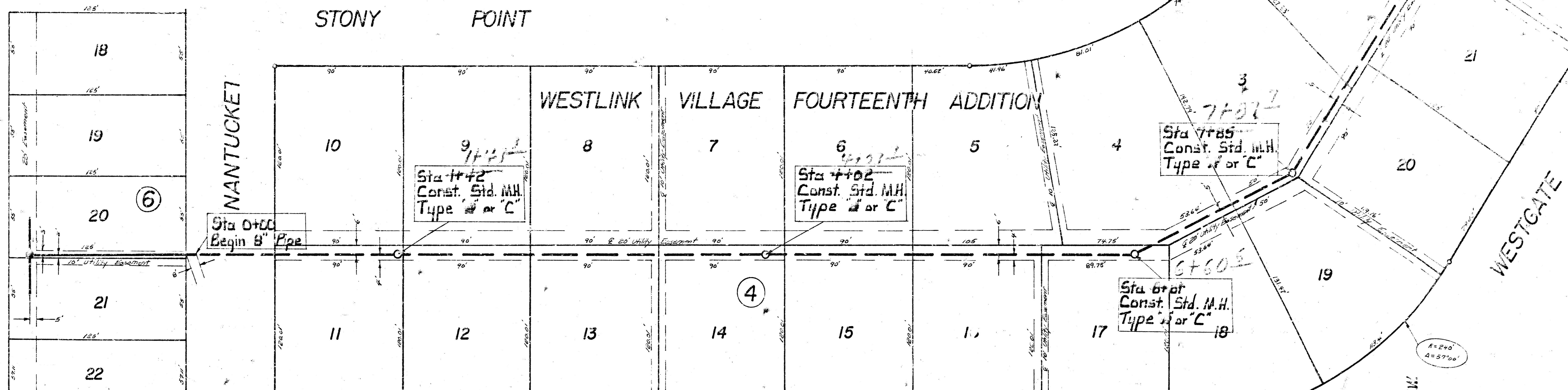


158.85 BM R.R. Spike N. fc. PP. N.W. cor. 13th & Westgate (2nd PP. W. Maize Rd.)

NOTE: PIPE BETWEEN STATION 0+00 AND 1+42 SHALL BE SAME TYPE OF PIPE AS PIPE SOUTH OF STATION 0+00 WHICH IS TO BE INSTALLED BY THE CONTRACTOR FOR LATERAL 103, SOUTHWEST INTERCEPTOR.



Sta 9+75
Const. Std. M.H.
Type "A" or "C"
Install 4" Stubs N. & S.
End Project

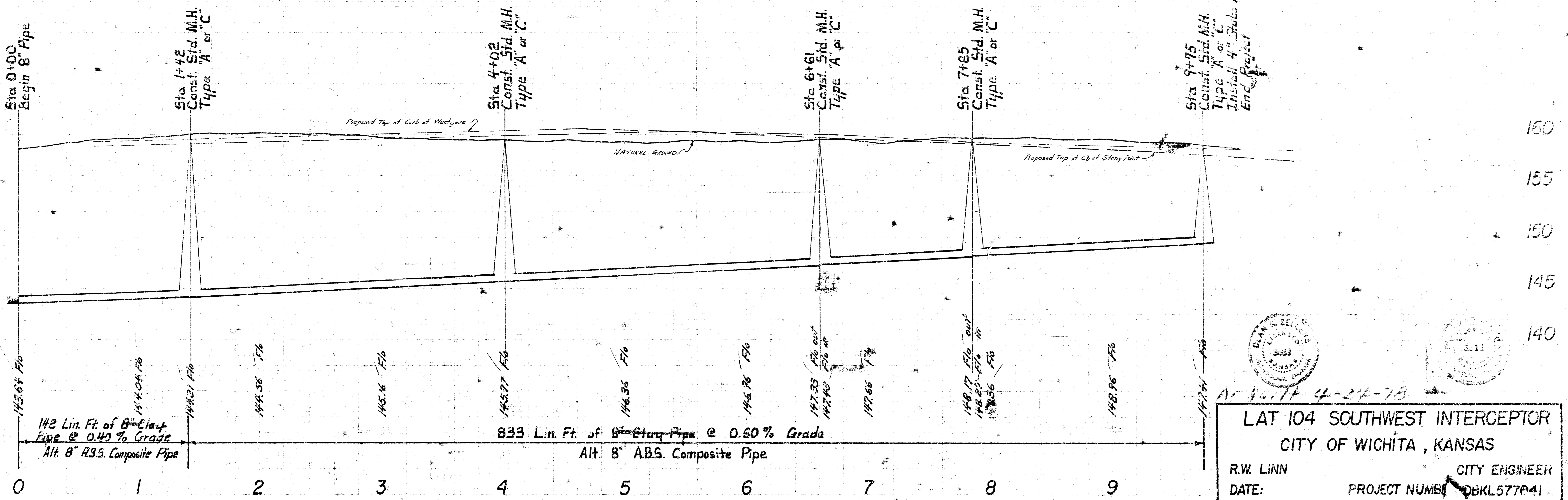
Sta 7+85
Const. Std. M.H.
Type "A" or "C"

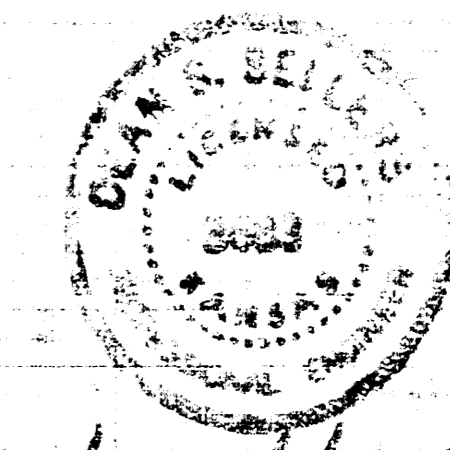

Sta 4+02
Const. Std. M.H.
Type "A" or "C"

Sta 1+42
Const. Std. M.H.
Type "A" or "C"

Sta 0+00
Begin 8" Pipe

Plan Scale 1" = 40'
Profile Scale 1" = 40' Horiz.
1" = 5' Vert.



LAT 104 SOUTHWEST INTERCEPTOR
 CITY OF WICHITA, KANSAS
 R.W. LINN CITY ENGINEER
 DATE: PROJECT NUMBER DBKL577041