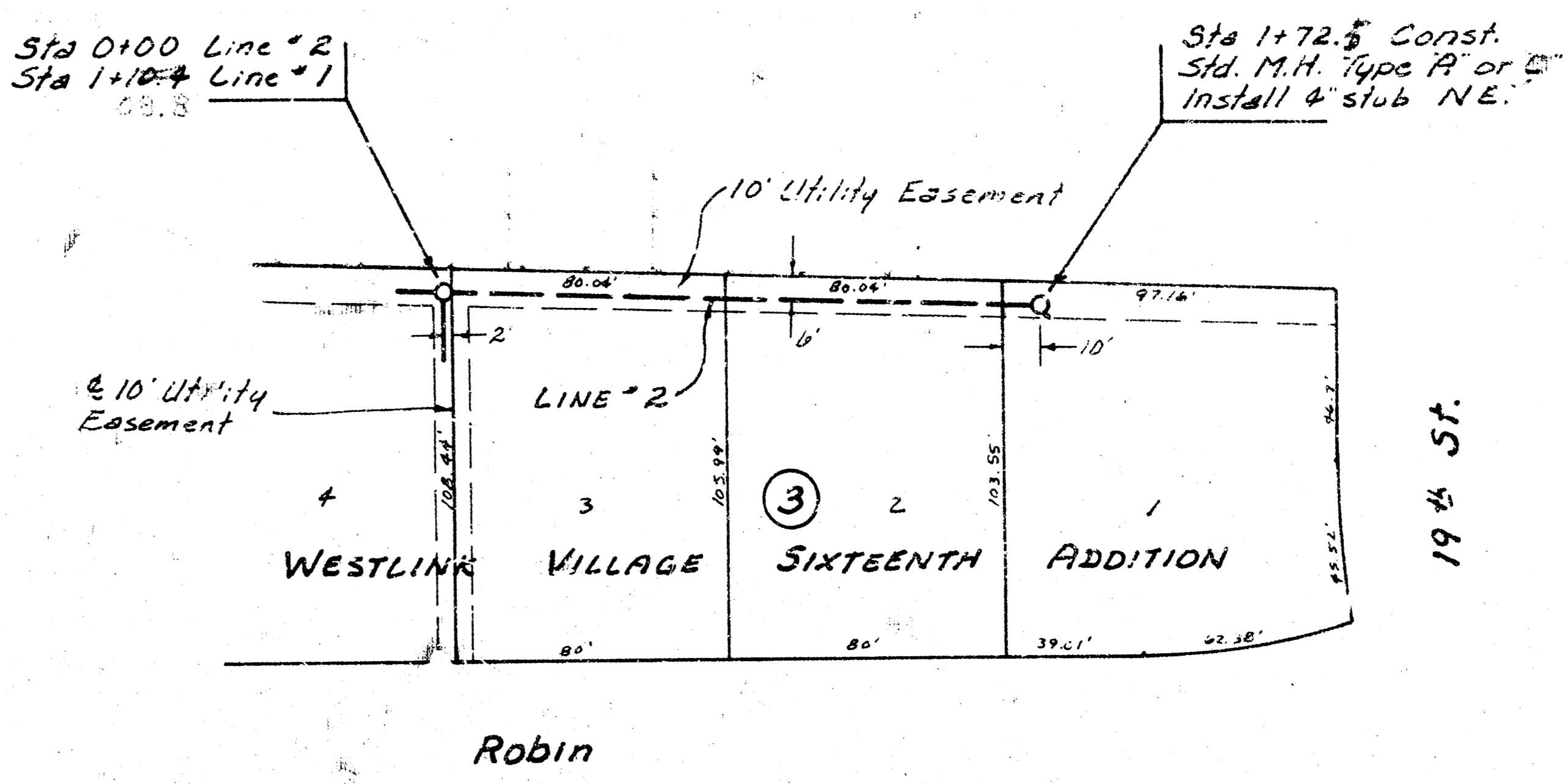
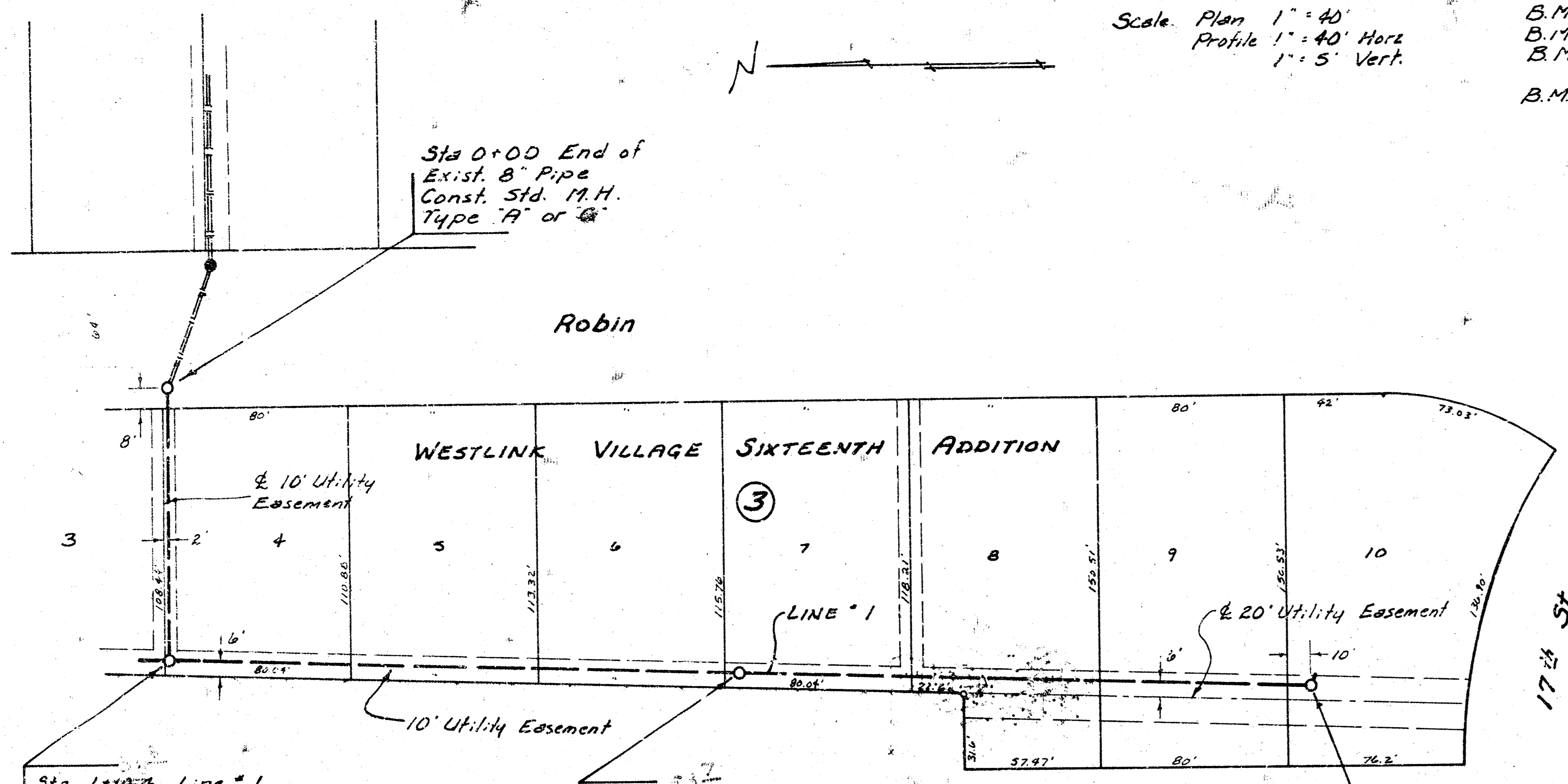
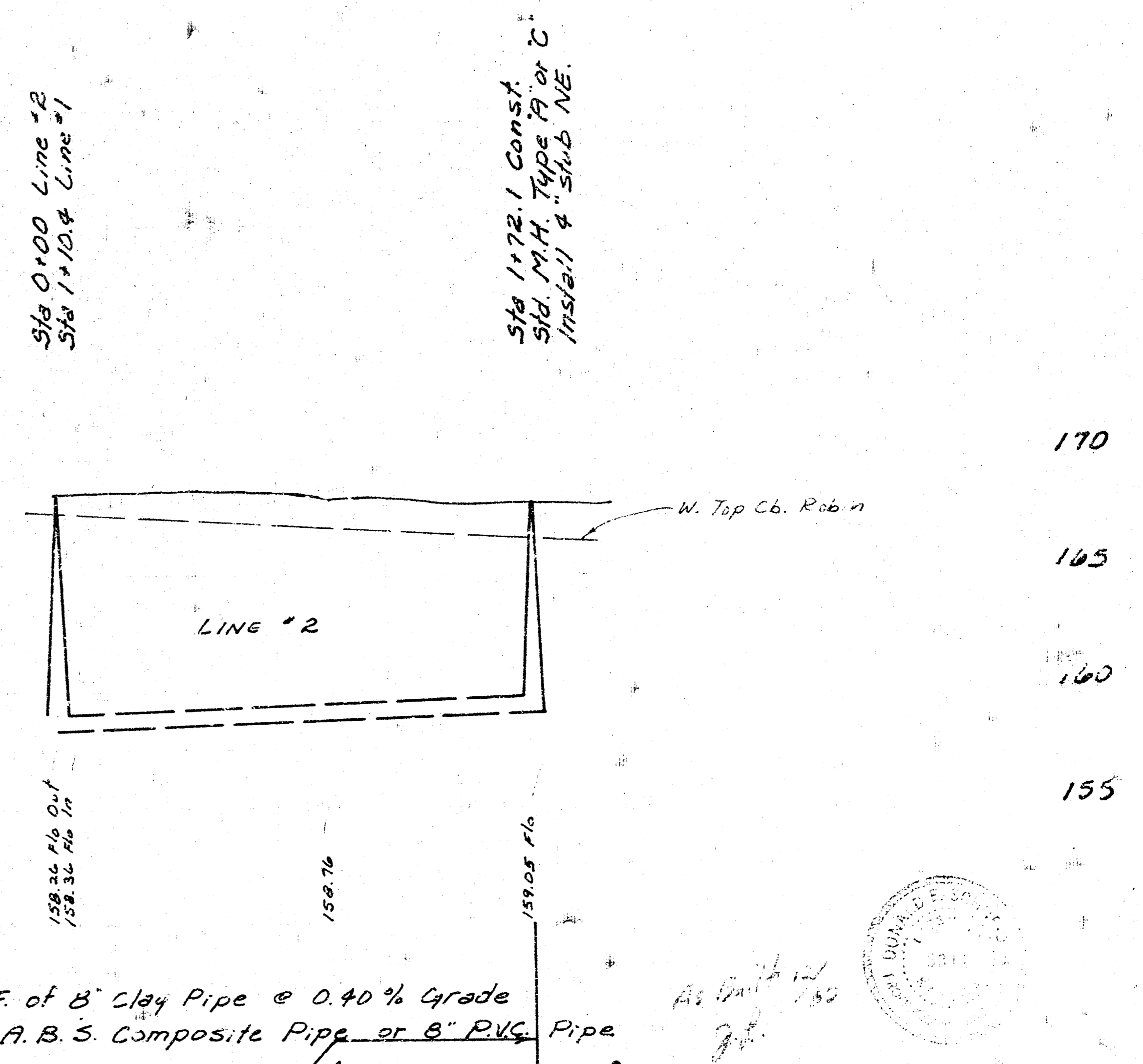
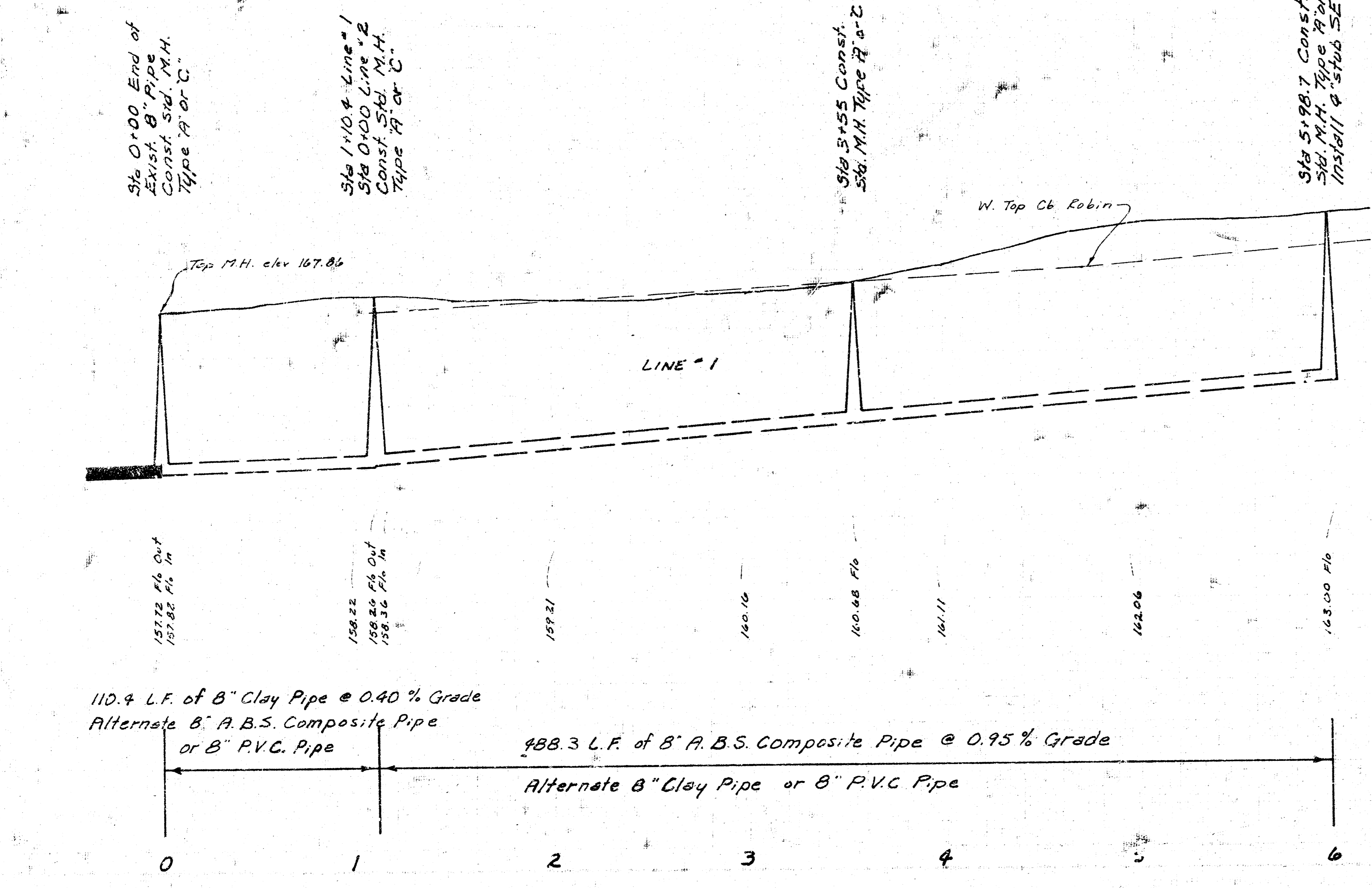


Scale: Plan 1" = 40'
 Profile 1" = 40' Horiz
 1" = 5' Vert.

B.M. 16793 City Std. 48' E & 43' N. E. s Tyler & 13th St.
 B.M. 17143 R.R. Spike E. Face P.P. SW. Corner Tyler Rd & 19th St.
 B.M. 17240 City Std. 31' S. & 36' E. of 1/4 Sec. corner
 Tyler & 17th St.
 B.M. 17322 "a" Top of Cb. in front of Cong. Wk. to Bell
 Tel. Switch Box at NW corner of 17th & Robin.



NOTE: TOPS OF MANHOLES SHALL BE SET TO MATCH PROPOSED FINISHED GRADE AS DETERMINED BY THE DEVELOPER UNLESS SHOWN OTHERWISE BY PLANS.



110.4 L.F. of 8" Clay Pipe @ 0.40% Grade
 Alternate B" A.B.S. Composite Pipe
 or B" P.V.C. Pipe

488.3 L.F. of 8" A.B.S. Composite Pipe @ 0.95% Grade
 Alternate B" Clay Pipe or B" P.V.C. Pipe

172.1 L.F. of 8" Clay Pipe @ 0.40% Grade
 Alternate B" A.B.S. Composite Pipe or B" P.V.C. Pipe

LAT 133 SW. INTERCEPTOR SEWER
 CITY OF WICHITA, KANSAS
 DEAN SELLERS — CITY ENGINEER
 PROJ. NO. 468-76245-80601-000-000-001