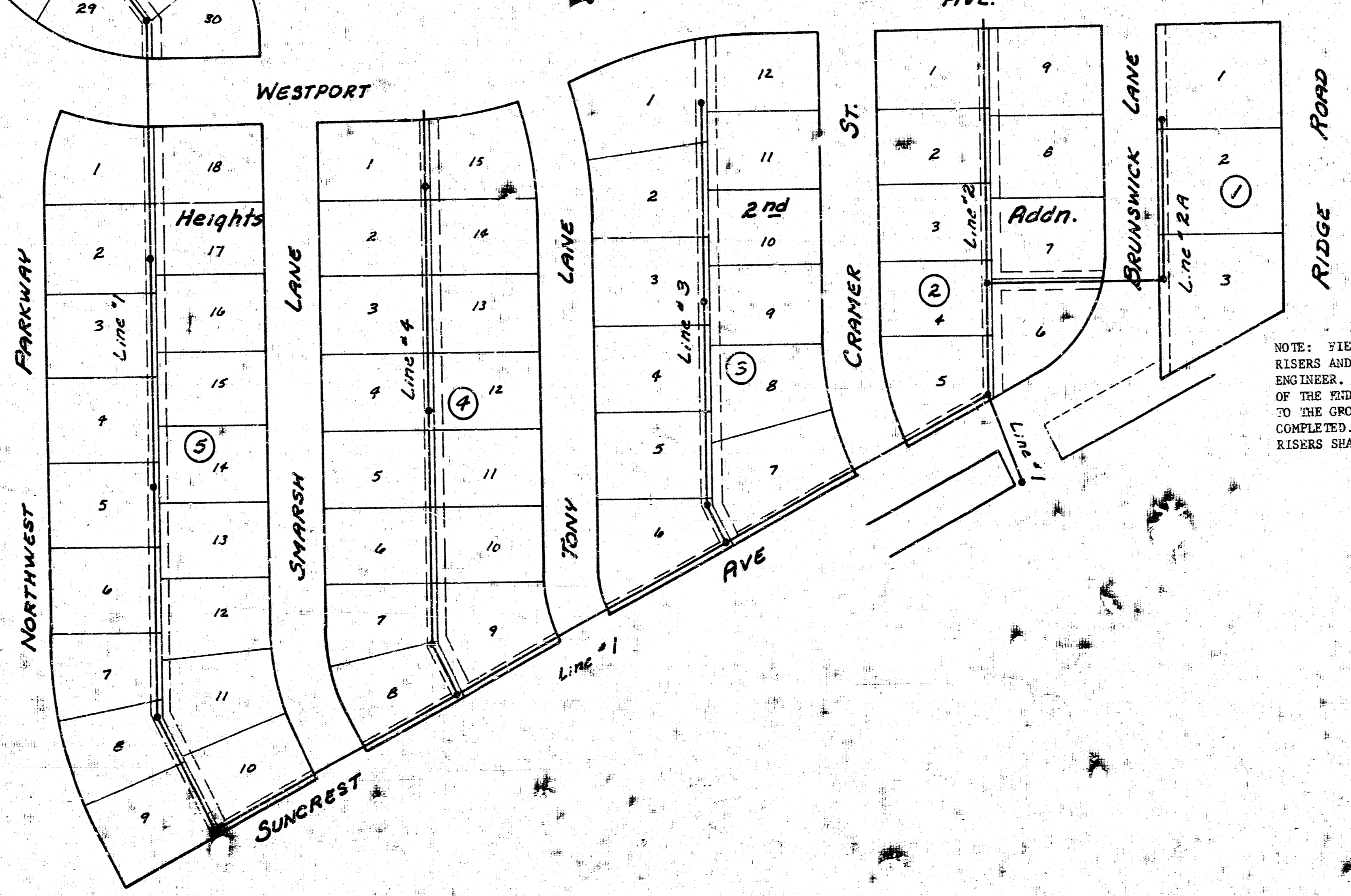
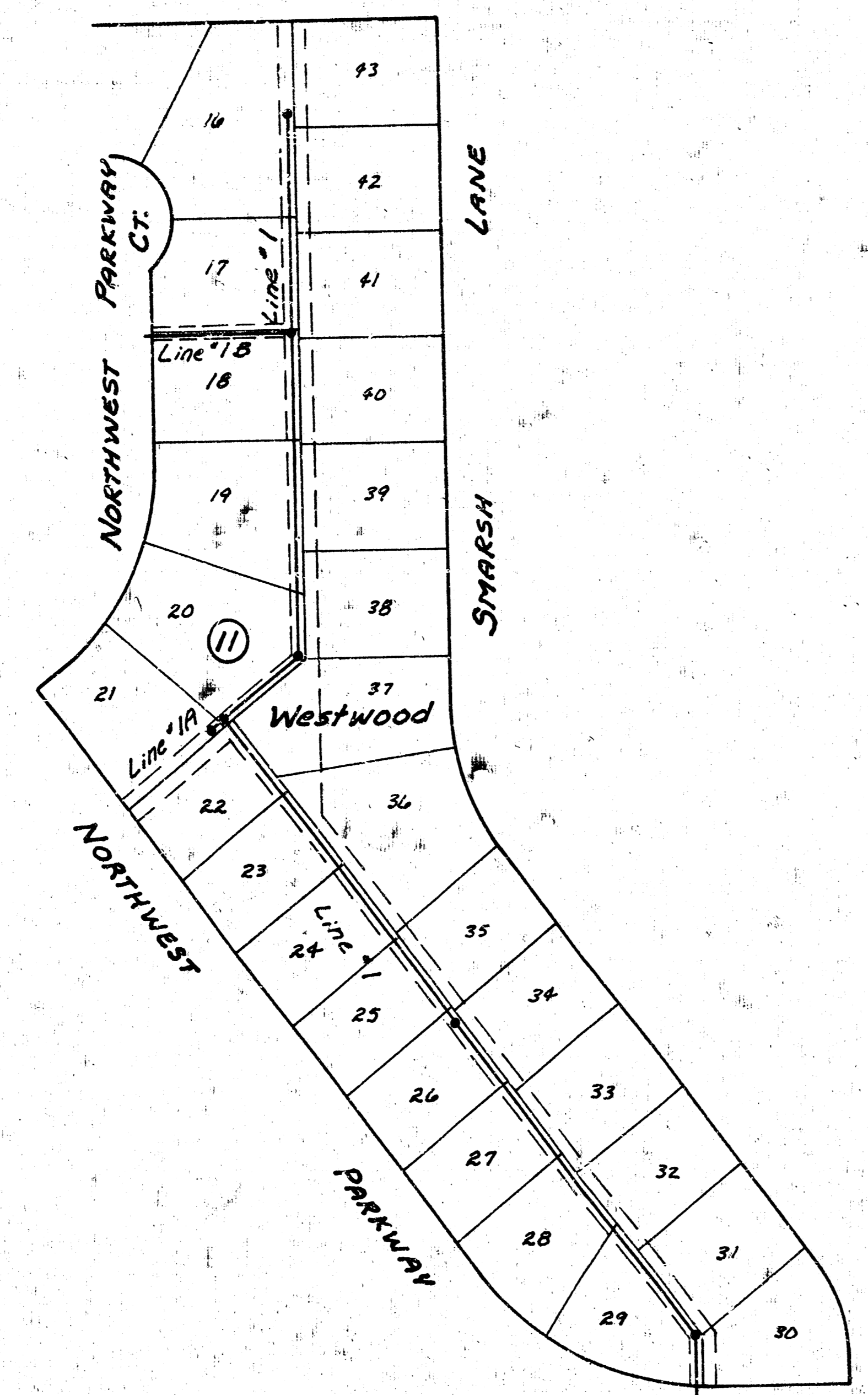


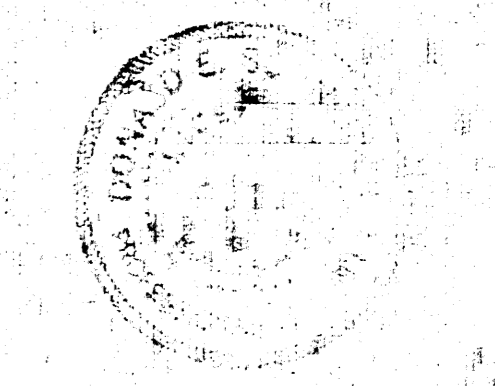
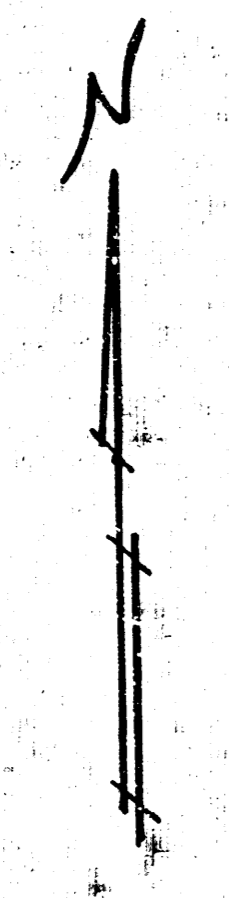
LAT 138 SOUTHWEST INTERCEPTOR
 CITY OF WICHITA
 DEAN SELLERS - CITY ENGINEER
 PROJECT NO. 468-76-245-80679-000-000-001

Revised 12-27-79



LINE #1	SHEETS 2-3
LINE #1A	SHEET 4
LINE #2	SHEET 5
LINE #2A	SHEET 6
LINE #3	SHEET 6
LINE #4	SHEET 7

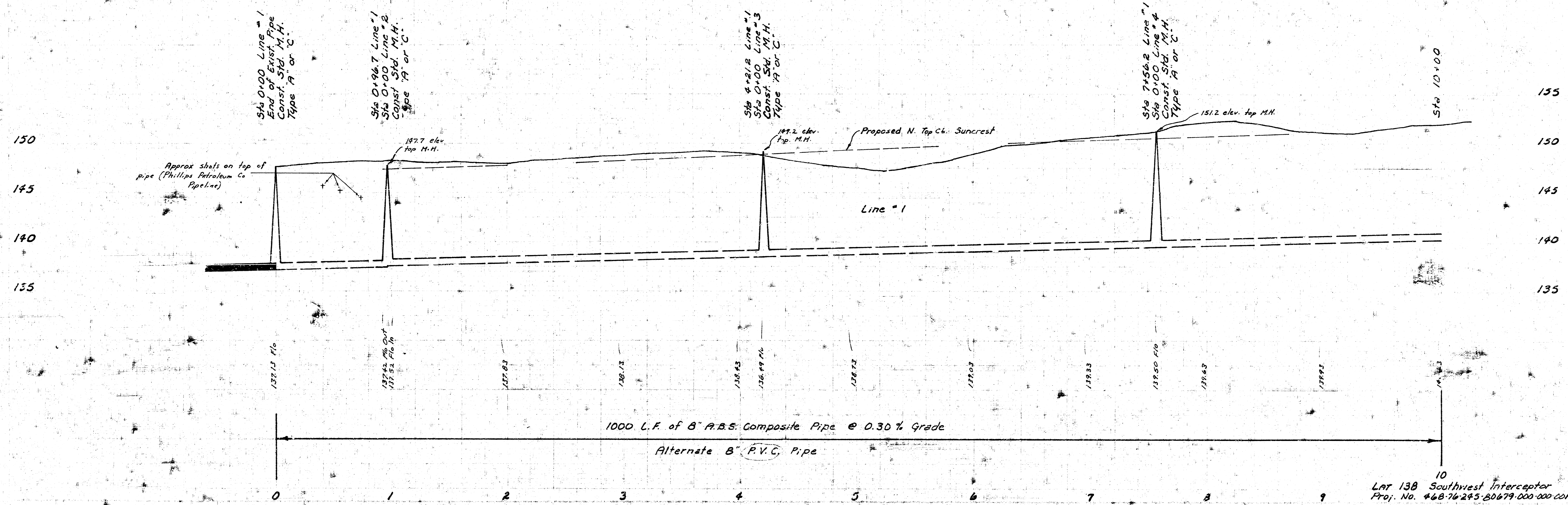
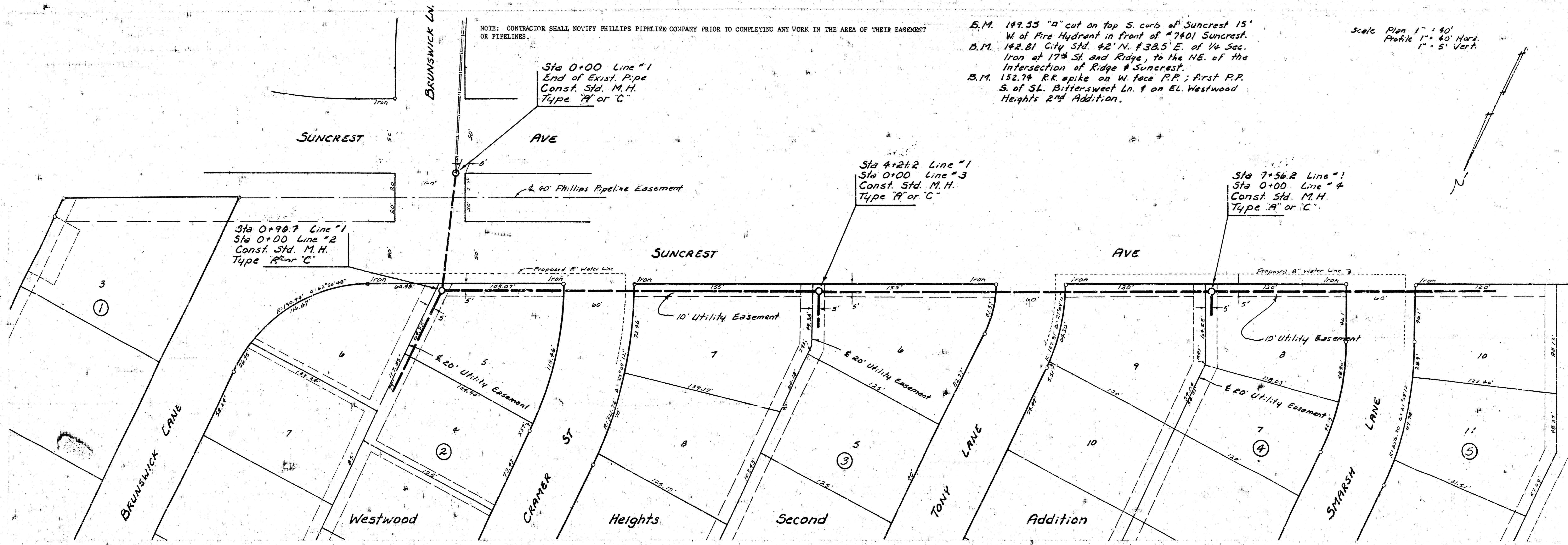
NOTE: FIELD ENGINEER SHALL SET TOPS OF MANHOLES TO MATCH PROPOSED FINISHED GRADE AS DEVELOPED BY THE DEVELOPER. RISERS AND ADDITIONAL STUBS SHALL BE INSTALLED ON THIS PROJECT TO SERVE INDIVIDUAL LOTS WHEN ORDERED BY THE FIELD ENGINEER. RISER CONSTRUCTION SHALL CONFORM TO THE REQUIREMENTS AS SHOWN ON STANDARD RISER DETAIL SHEET. LOCATIONS OF THE ENDS OF THE RISERS SHALL BE MARKED BY FASTENING GREEN PLASTIC COLORED TAPE TO THE END OF THE RISER AND BROUGHT TO THE GROUND SURFACE AS THE EXCAVATION IS BACKFILLED SUCH THAT THE COLORED TAPE WILL BE VISIBLE WHEN THE PROJECT IS COMPLETED. ALL RISERS SHALL BE CONSTRUCTED USING S.D.R. 23.5 A.B.S. OR P.V.C. PIPE. ELEVATIONS OF STUBS AND TOPS OF RISERS SHALL BE SUCH THAT WILL FACILITATE CONNECTION OF BASEMENT DRAINS WHEN THESE LOTS ARE DEVELOPED.



Scale Plan 1" = 40'
Profile 1" = 5' Vert.

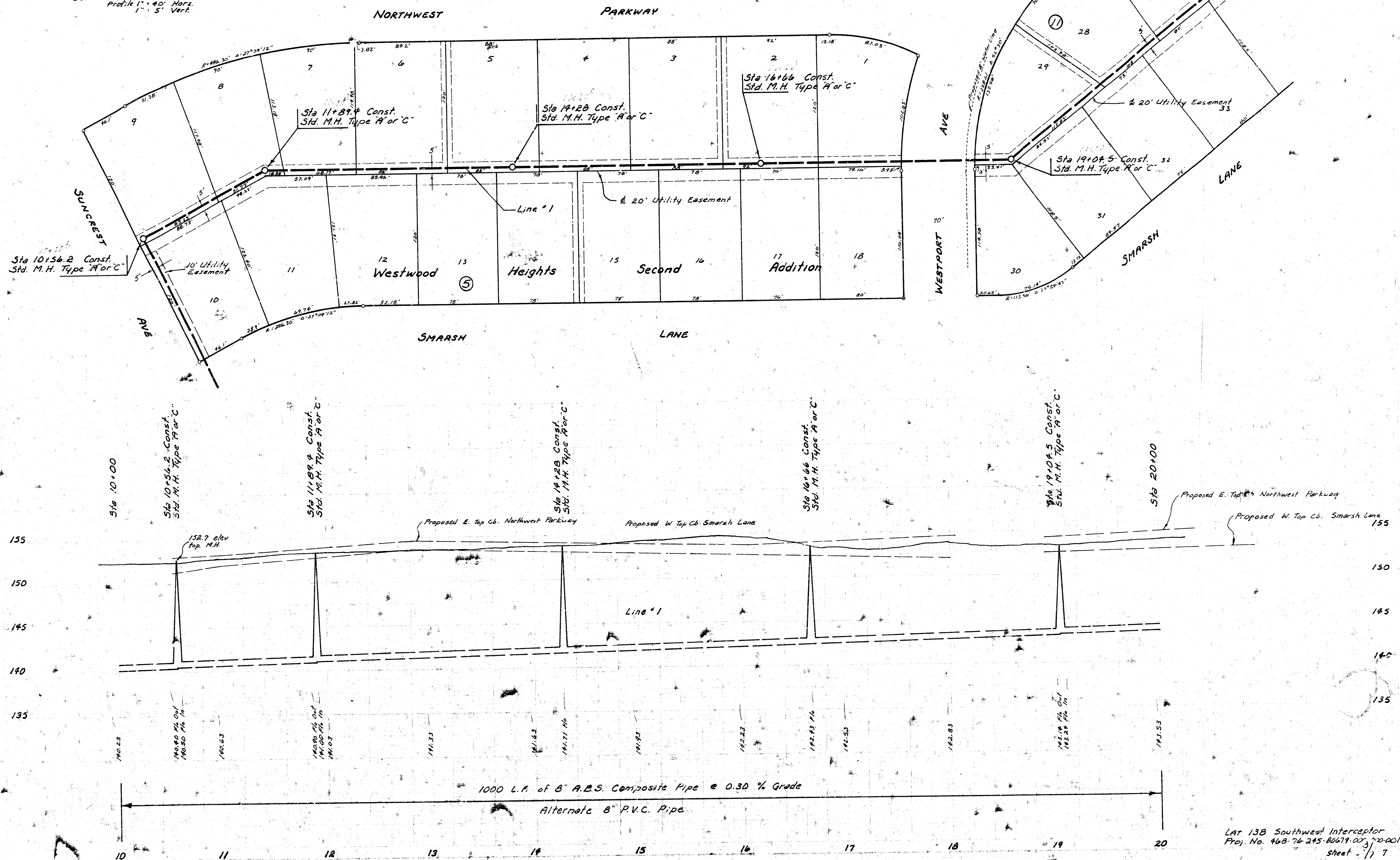
E.M. 149.55 "d" cut on top S. curb of Suncrest 15' W. of Fire Hydrant in front of #7401 Suncrest.
B.M. 142.81 City Std. 42" N. 38.5' E. of 1/4 Sec. Iron at 17th St. and Ridge, to the NE. of the intersection of Ridge & Suncrest.
B.M. 152.74 R.R. spike on W. face R.P. First R.P. S. of 3L Bittersweet Ln. & on EL. Westwood Heights 2nd Addition.

NOTE: CONTRACTOR SHALL NOTIFY PHILLIPS PIPELINE COMPANY PRIOR TO COMPLETING ANY WORK IN THE AREA OF THEIR EASEMENT OR PIPELINES.

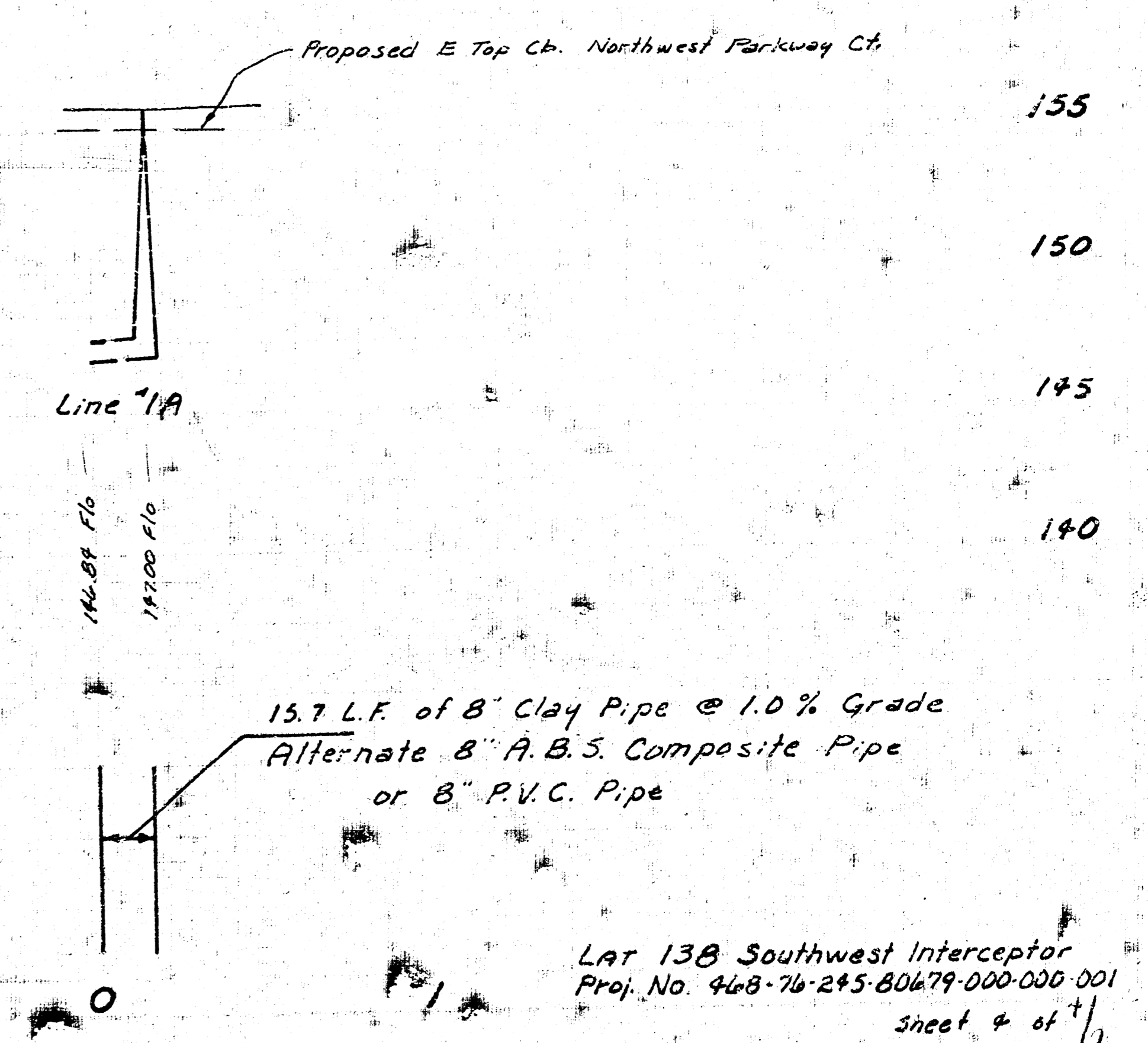
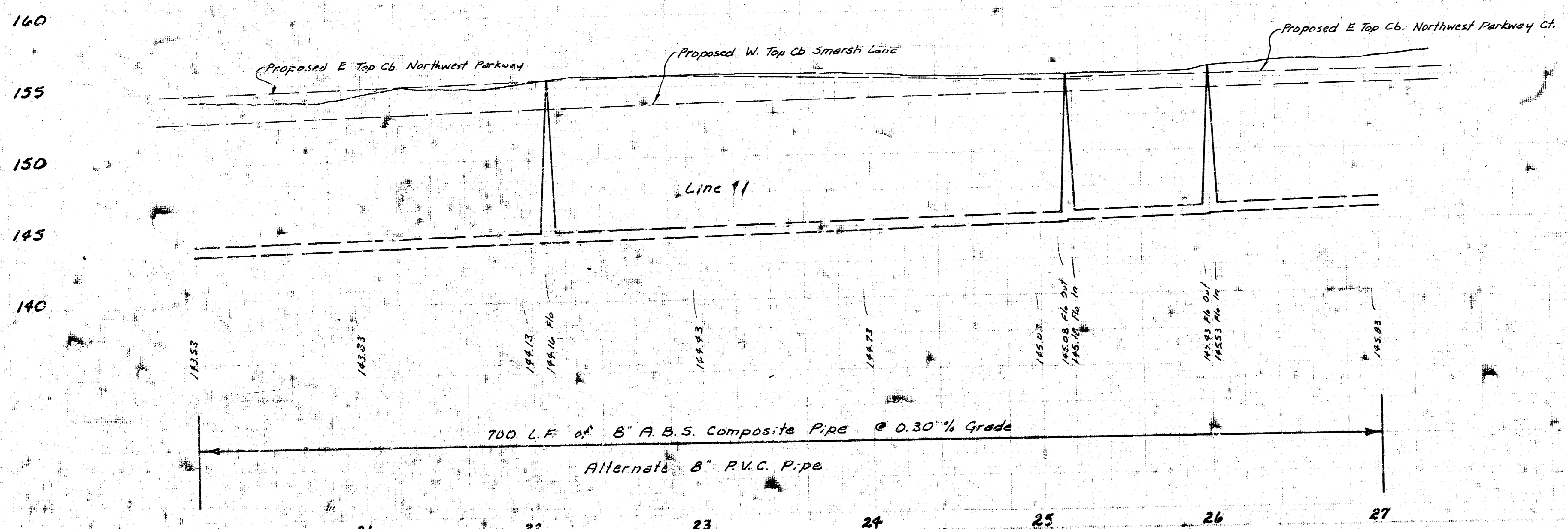
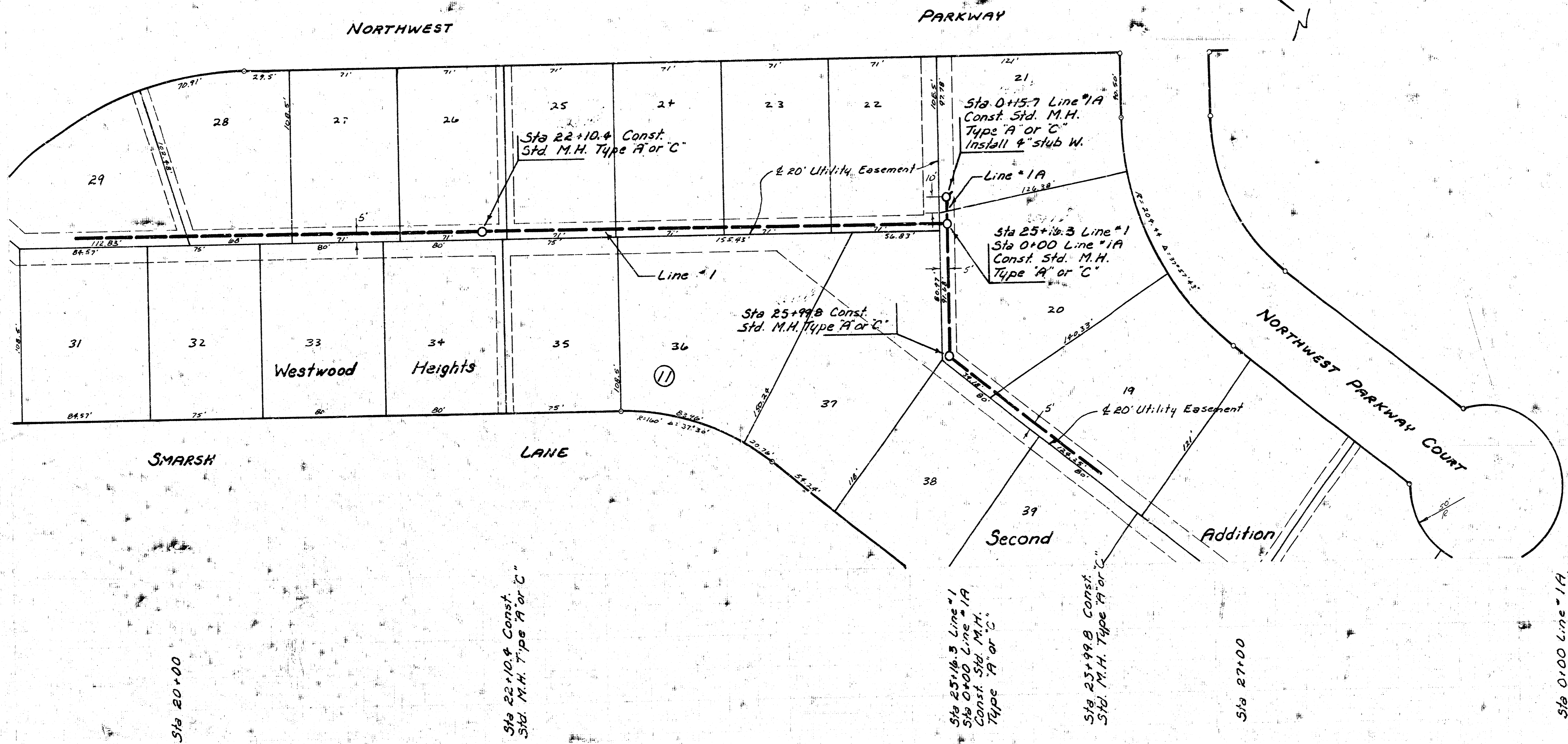


1000 L.F. of 8" A.B.S. Composite Pipe @ 0.30% Grade
Alternate B" P.V.C. Pipe

Scale Plan 1" = 40'
 Profile 1" = 40' Horiz.
 Profile 1" = 5' Vert.

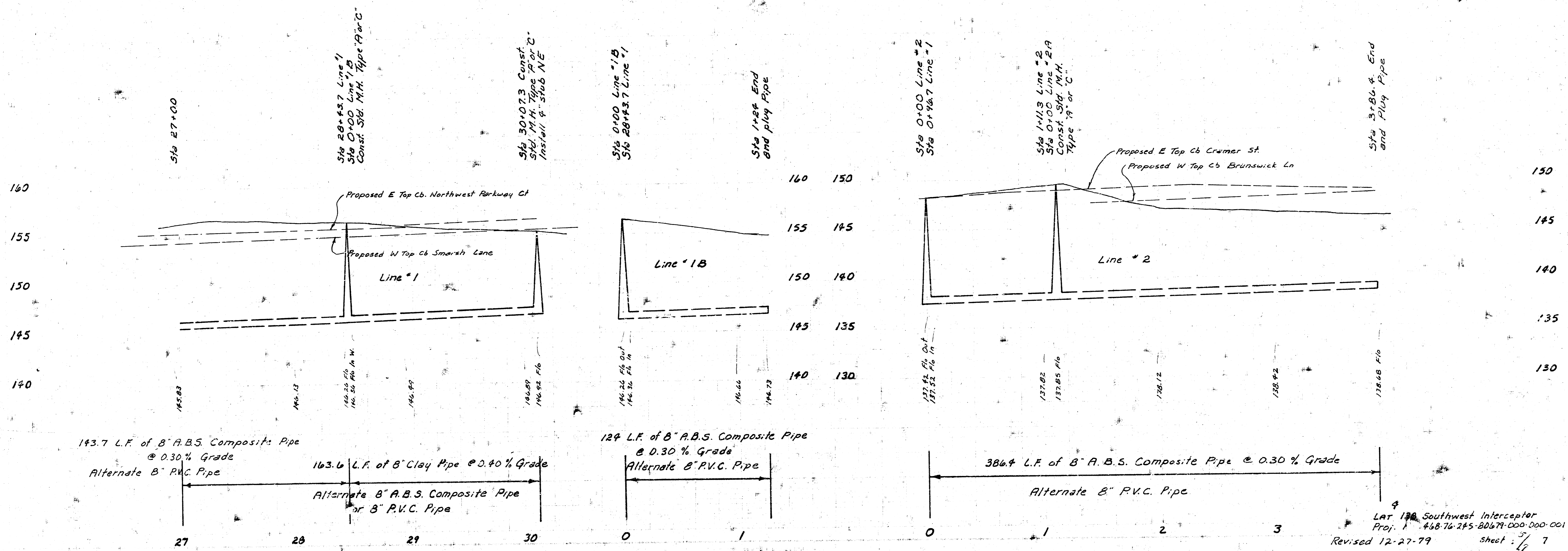
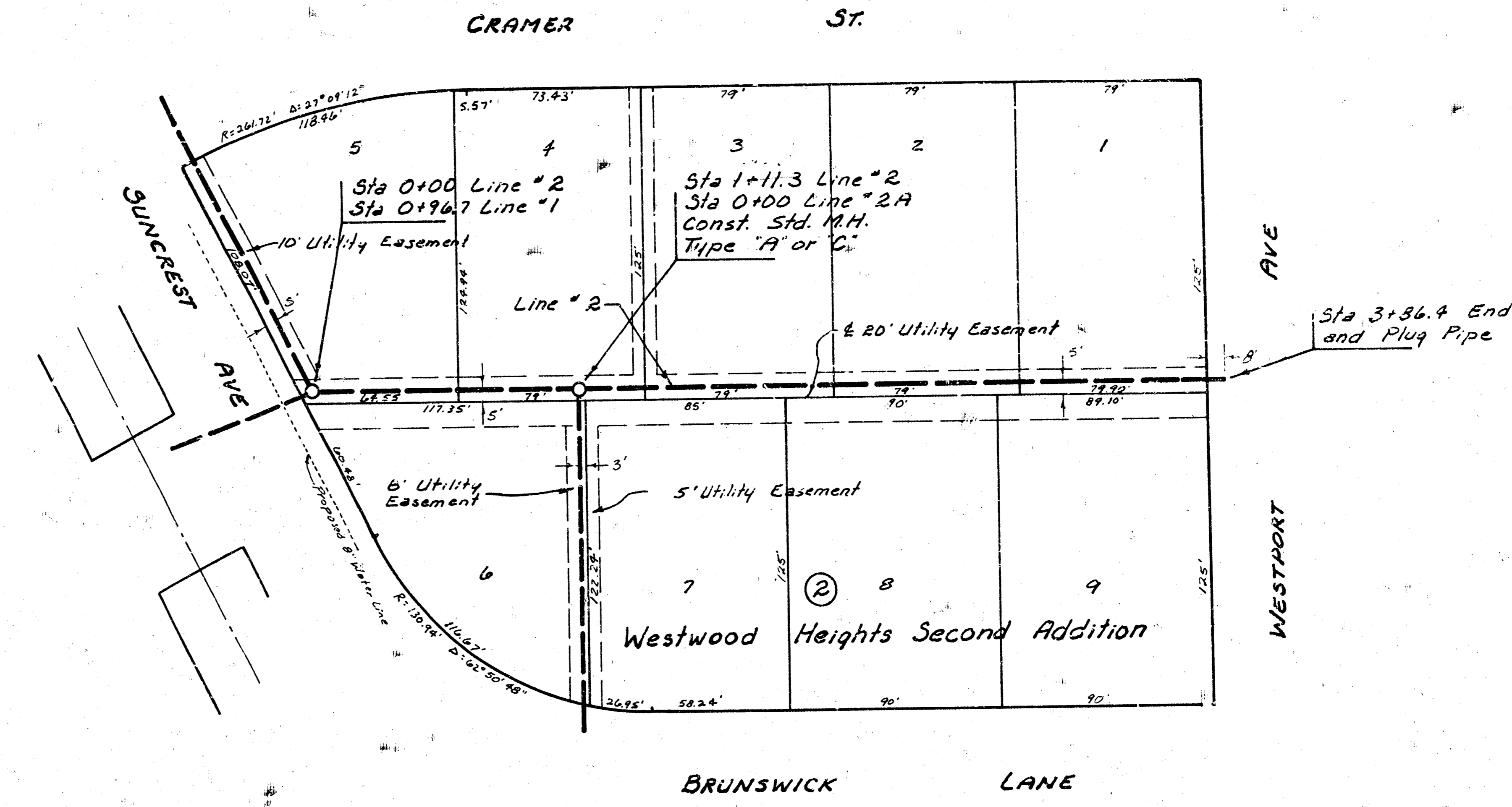
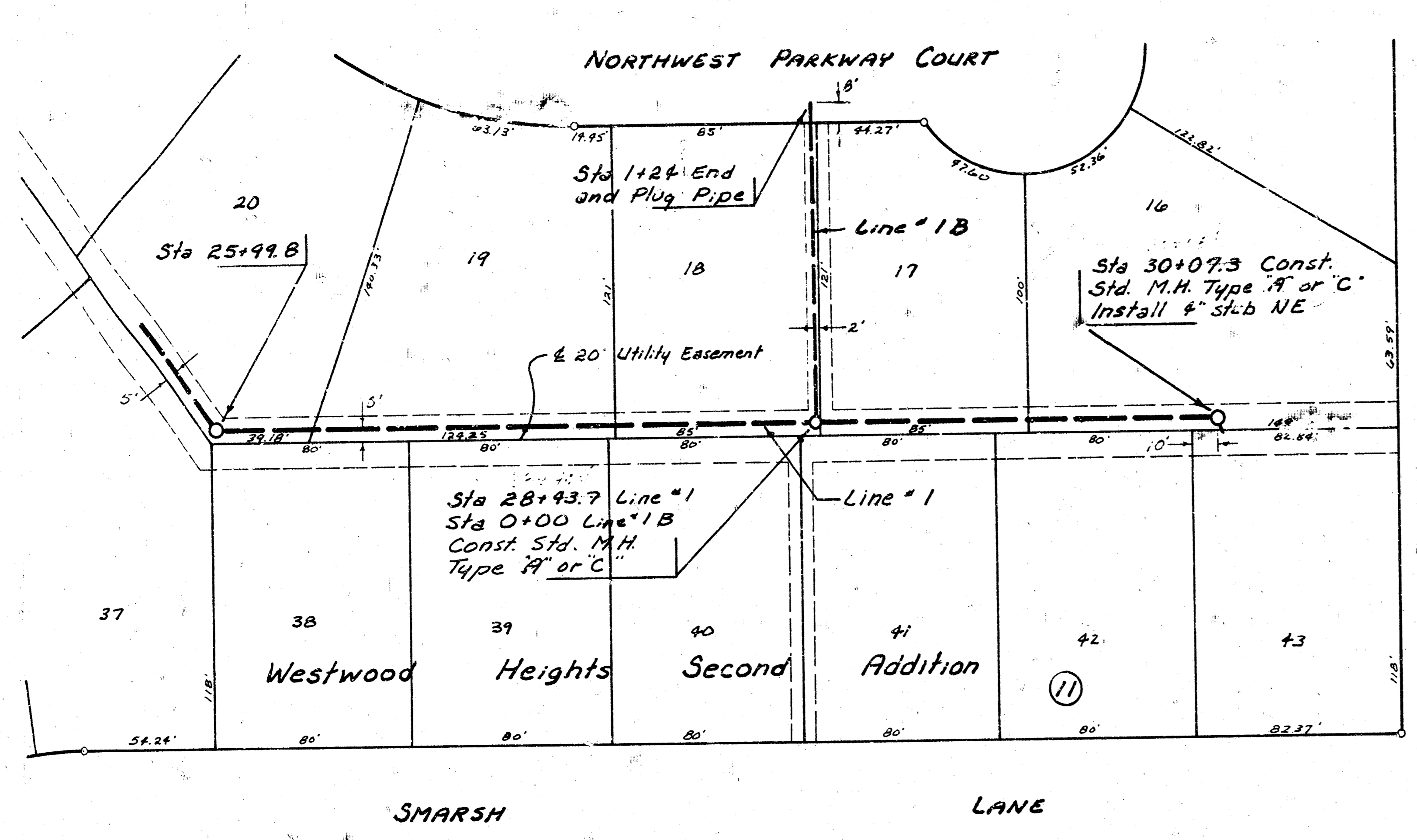


Scale Plan 1" = 40'
 Profile 1" = 40' Horiz.
 1" = 5' Vert.



15.7 L.F. of 8" Clay Pipe @ 1.0% Grade
 Alternate 8" A.B.S. Composite Pipe
 or 8" P.V.C. Pipe

Scale Plan 1" = 40'
Profile 1" = 40' Horz.
1" = 5' Vert.

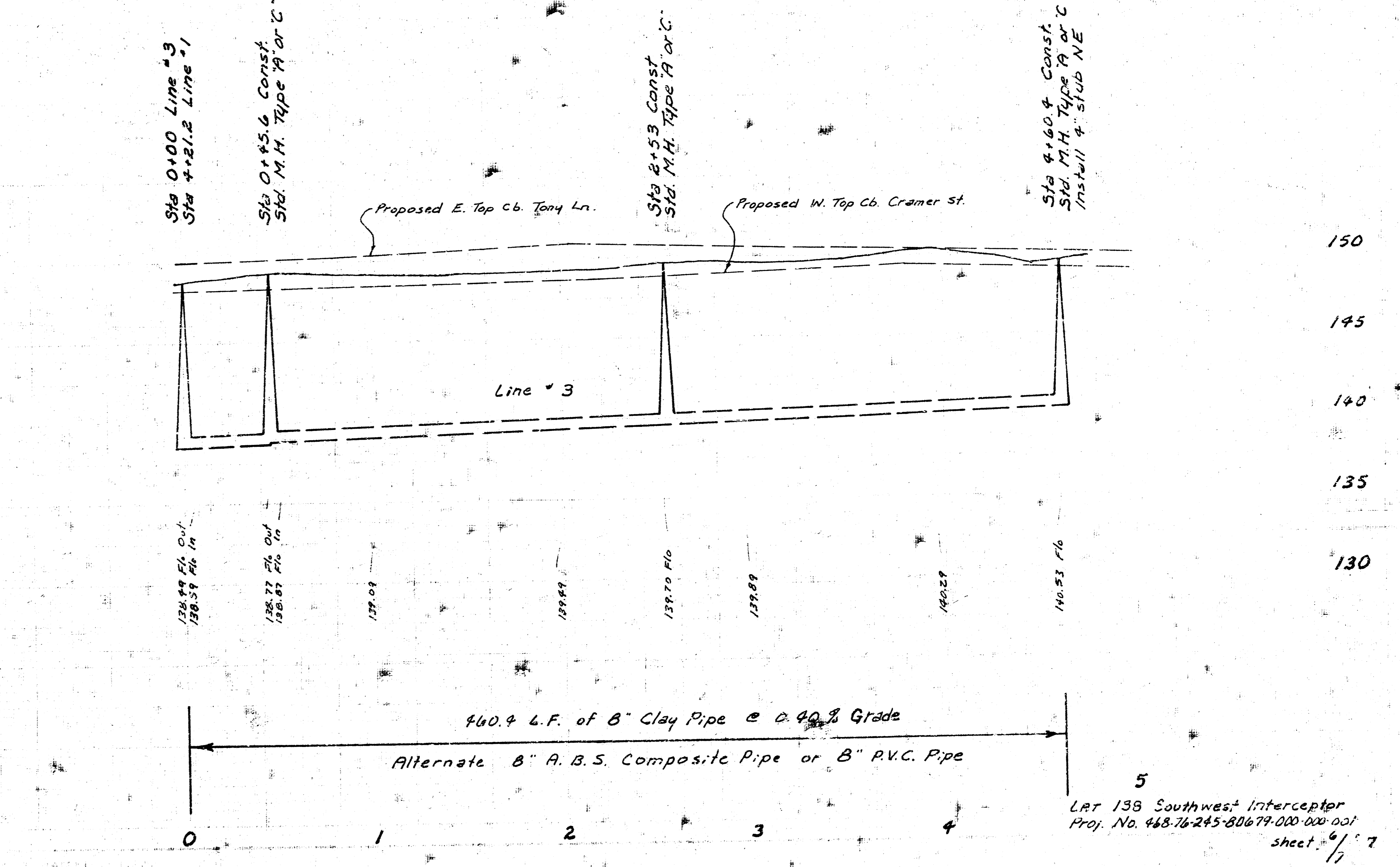
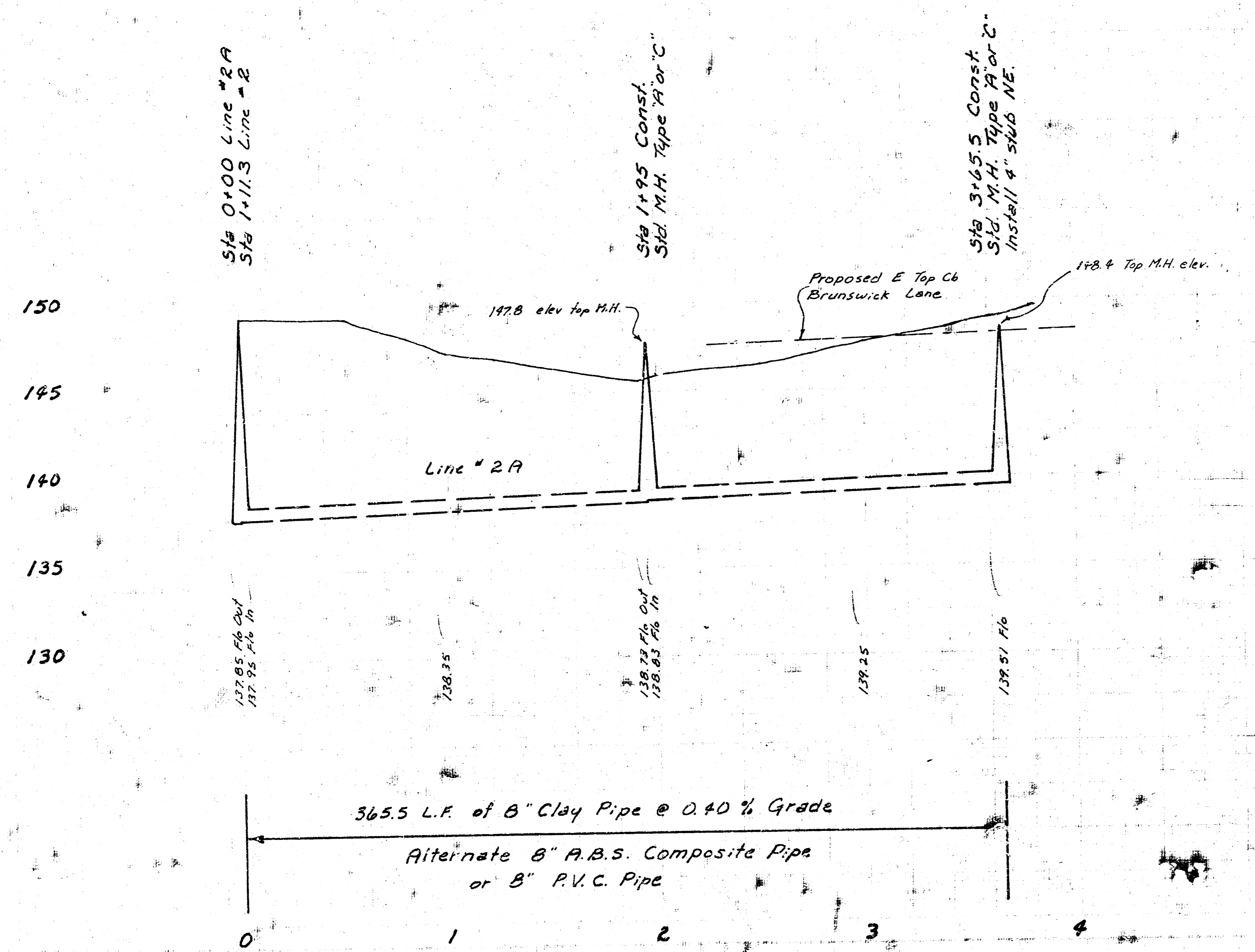
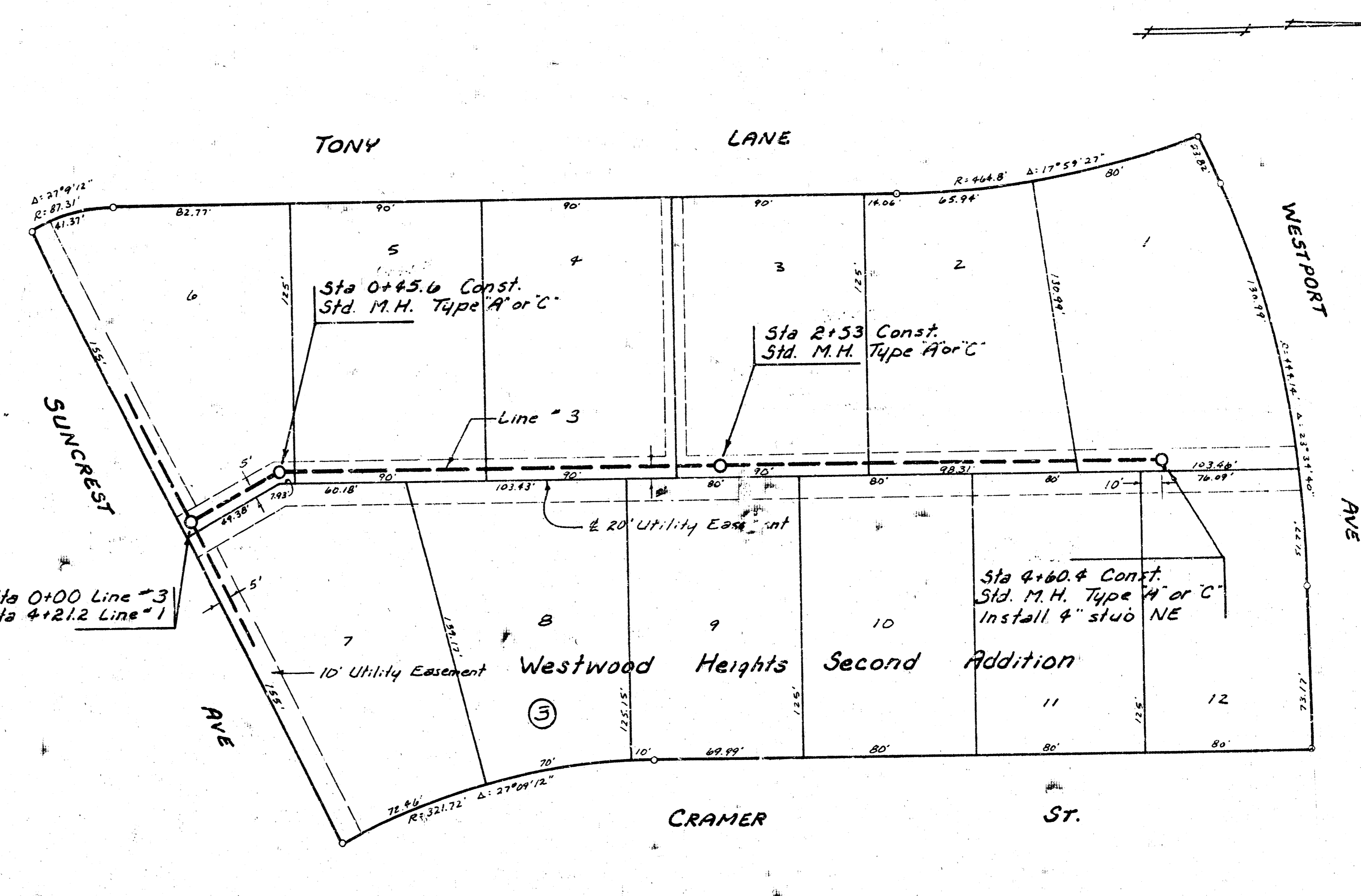
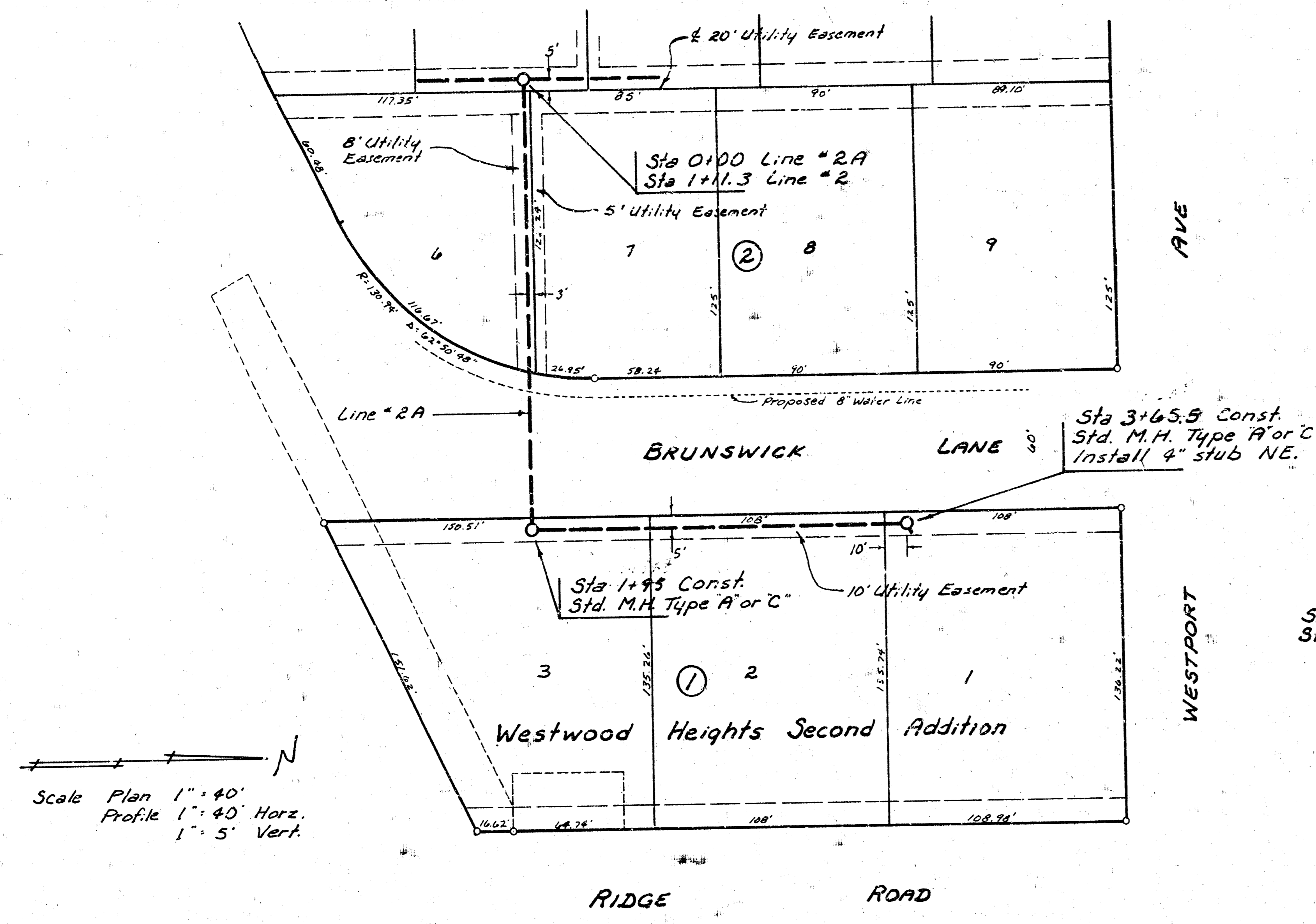


143.7 L.F. of 8" A.B.S. Composite Pipe @ 0.30% Grade
Alternate 8" P.V.C. Pipe

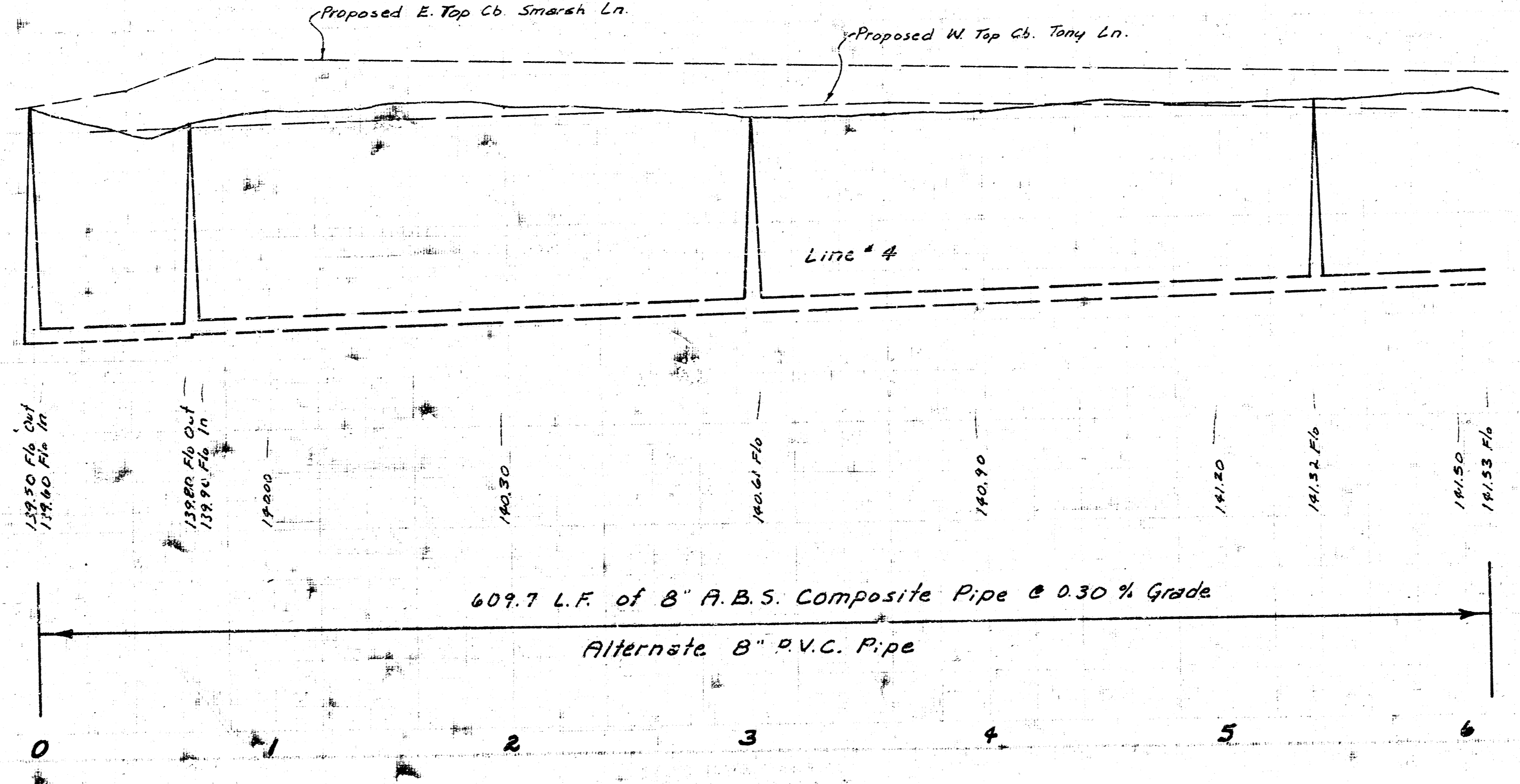
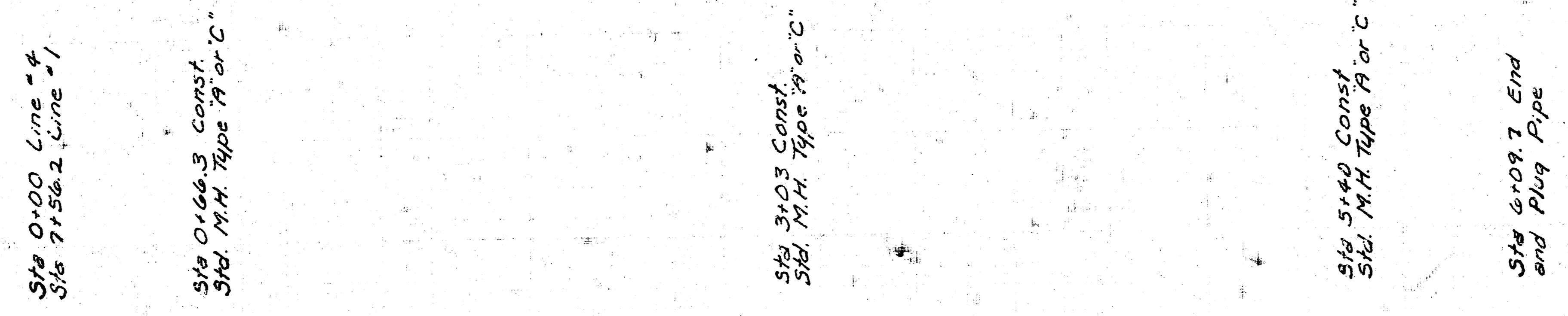
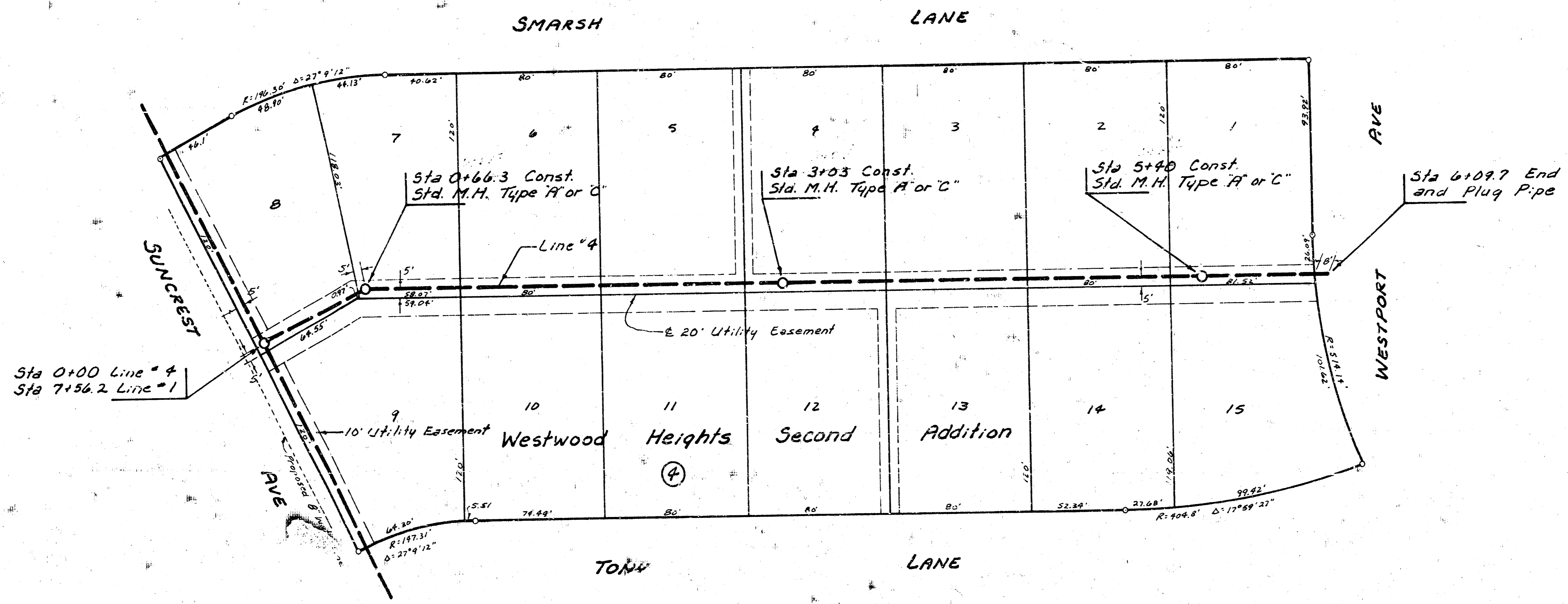
163.6 L.F. of 8" Clay Pipe @ 0.40% Grade
Alternate 8" A.B.S. Composite Pipe or 8" P.V.C. Pipe

124 L.F. of 8" A.B.S. Composite Pipe @ 0.30% Grade
Alternate 8" P.V.C. Pipe

386.4 L.F. of 8" A.B.S. Composite Pipe @ 0.30% Grade
Alternate 8" P.V.C. Pipe



Scale Plan 1" = 40'
 Profile 1" = 40' Horiz.
 1" = 5' Vert.



155
 150
 145
 140
 135