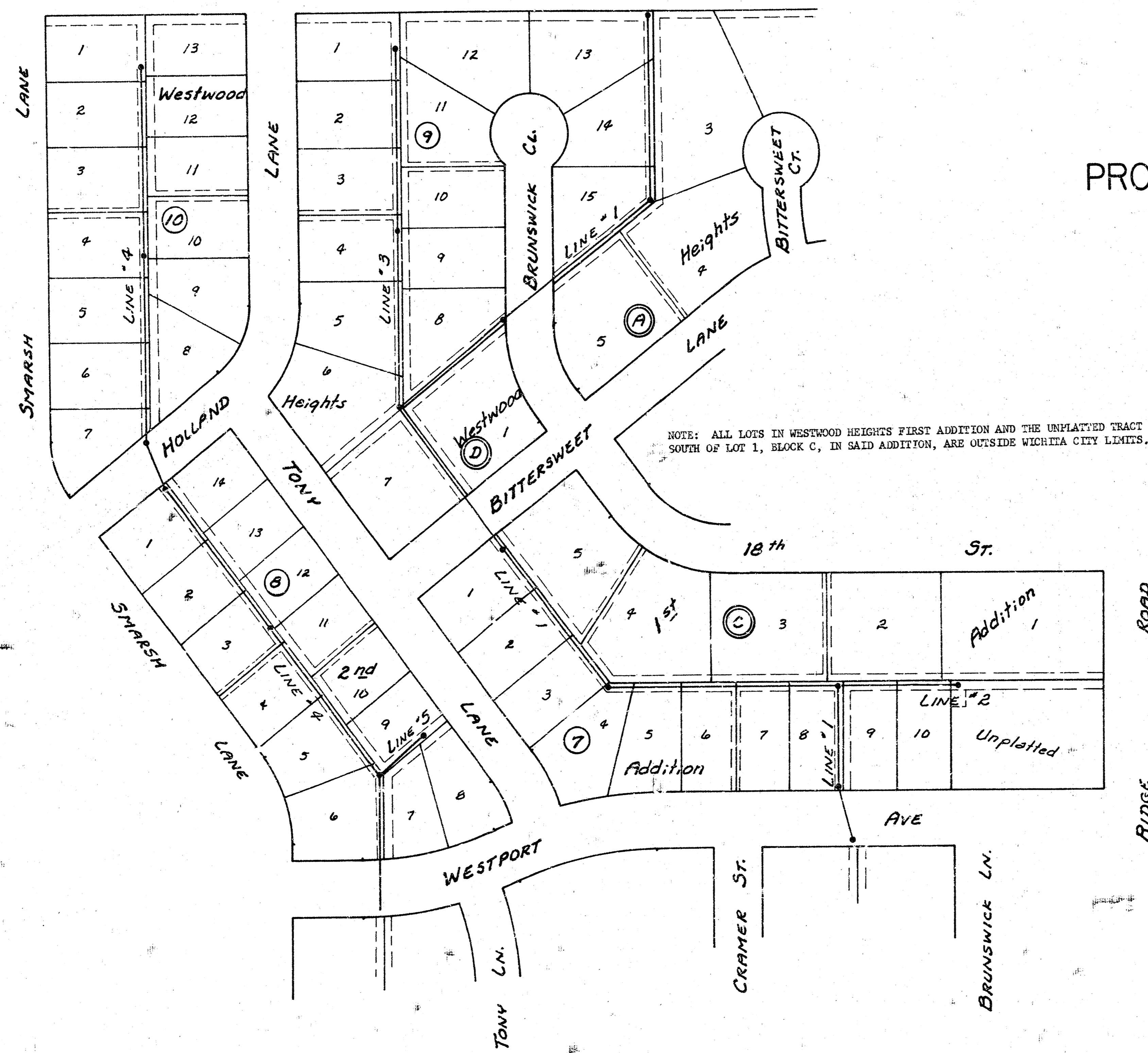


LAT 140 SOUTHWEST INTERCEPTOR

CITY OF WICHITA

DEAN SELLERS - CITY ENGINEER

PROJECT NO. 468-76-245-80681-000-000-001

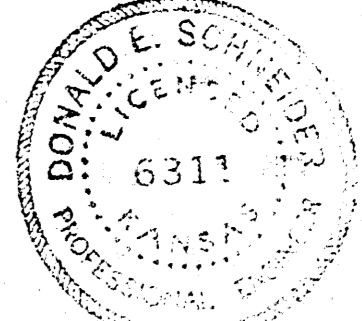


NOTE: ALL LOTS IN WESTWOOD HEIGHTS FIRST ADDITION AND THE UNPLATTED TRACT SOUTH OF LOT 1, BLOCK C, IN SAID ADDITION, ARE OUTSIDE WICHITA CITY LIMITS.

LINE #1	SHEETS 2-3
LINE #2	SHEET 3
LINE #3	SHEET 4
LINE #4	SHEETS 4-5
LINE #5	SHEET 4

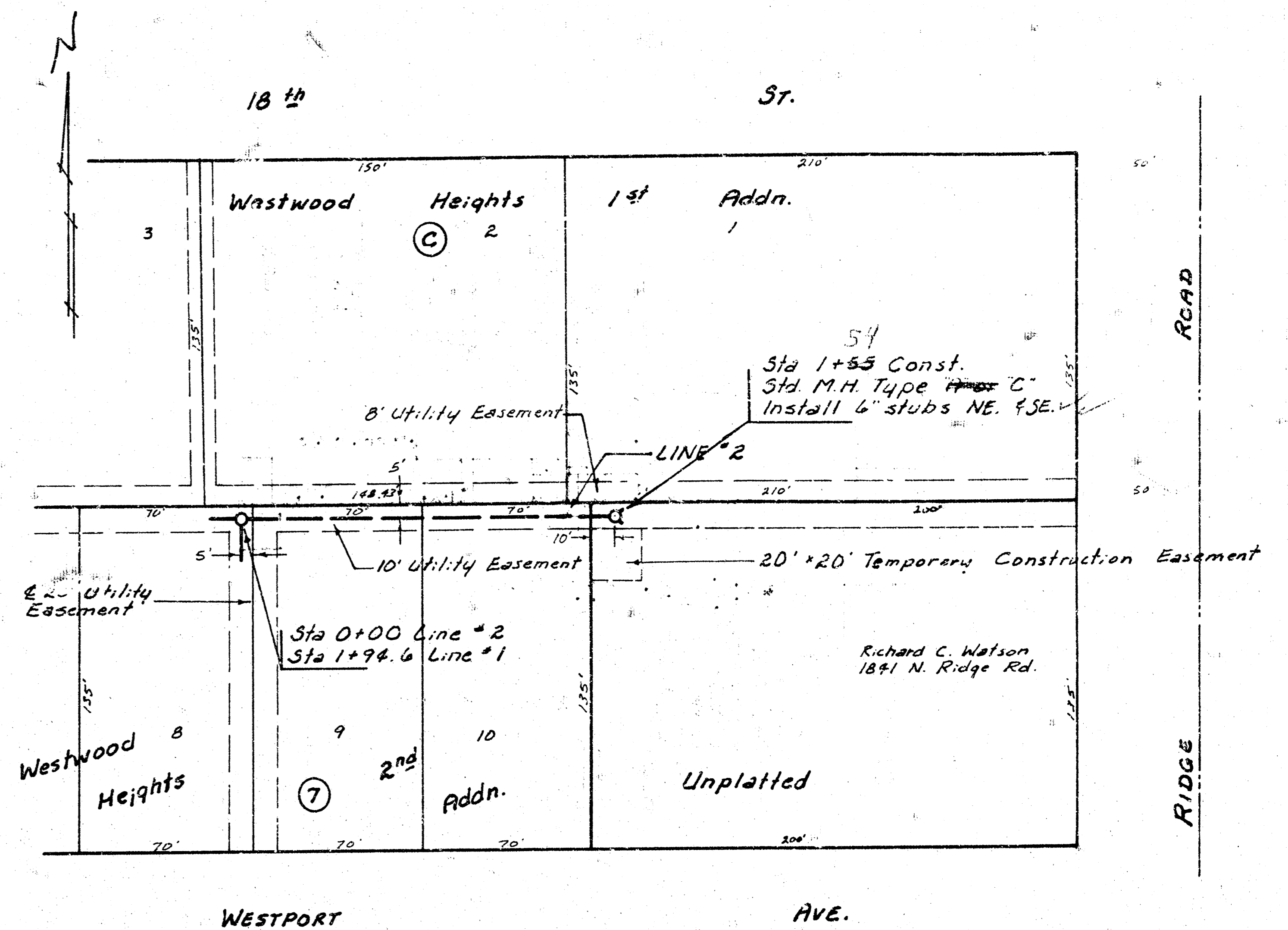
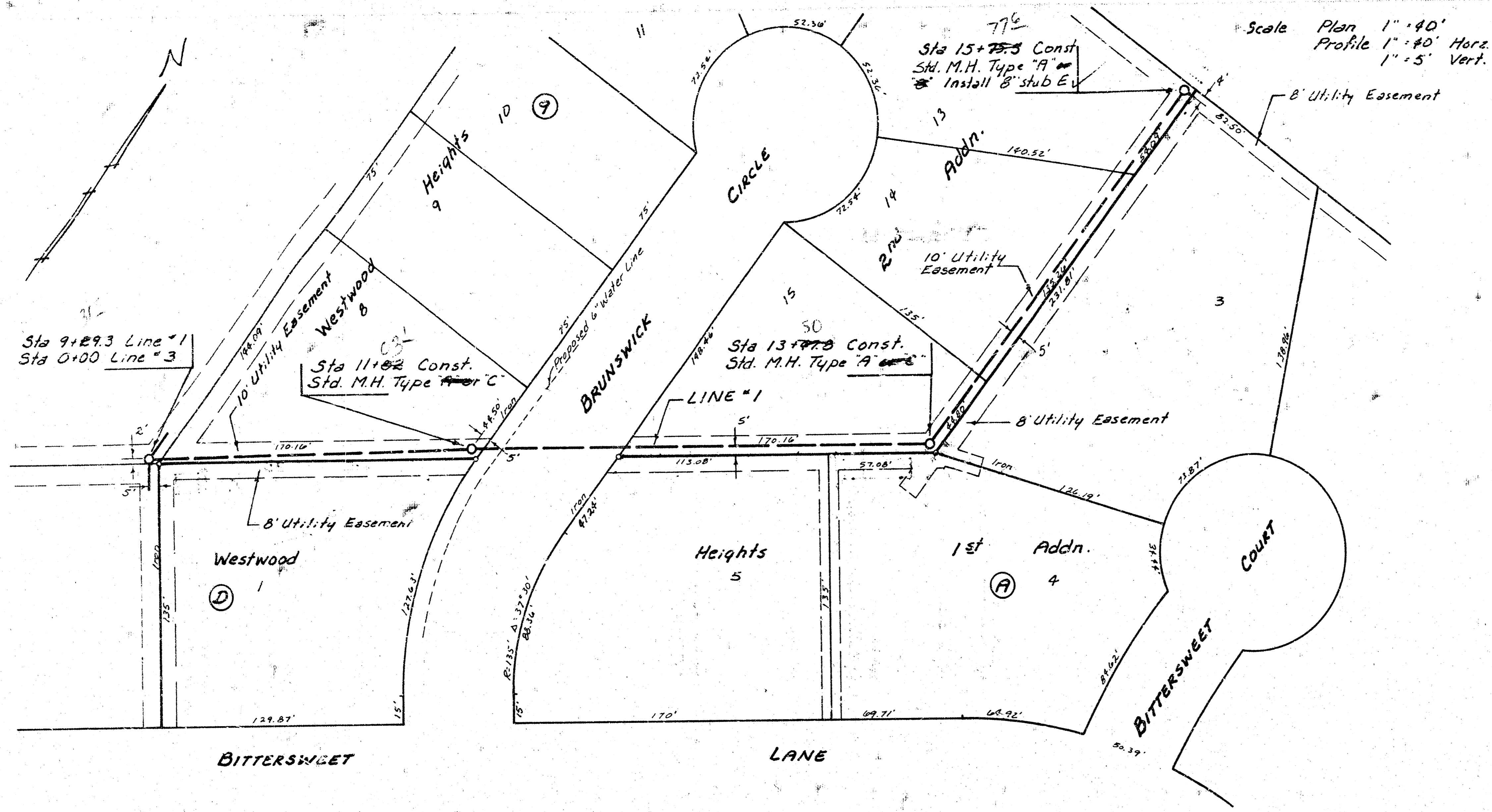
NOTE: CONTRACTOR SHALL GIVE OWNERS OF DEVELOPED PROPERTY SERVED BY THIS PROJECT A MINIMUM ADVANCE NOTICE OF 48 HOURS PRIOR TO START OF CONSTRUCTION. THIS PROJECT SHALL BE COORDINATED WITH THE PROJECT LAT. 138, SOUTHWEST INTERCEPTOR. FIELD ENGINEER SHALL SET TOPS OF MANHOLES TO MATCH PROPOSED FINISHED GRADE AS DETERMINED BY THE DEVELOPER.

As Built
1/28/81
JCF



Revised 2-7-80

Sheet 1 of 5



NOTE: CONTRACTOR SHALL STRIP AND SAVE GRASS SOD ON UNPLATTED TRACT SERVED BY LINE 2. GRASS SOD SHALL BE REPLACED AFTER SEWER CONSTRUCTION IS COMPLETED. THIS WORK WILL NOT BE PAID FOR DIRECTLY AND SHALL BE INCLUDED IN THE PRICE BID FOR THE OTHER ITEMS OF WORK.

Sta 9+29.3 Line #1
Sta 0+00 Line #3

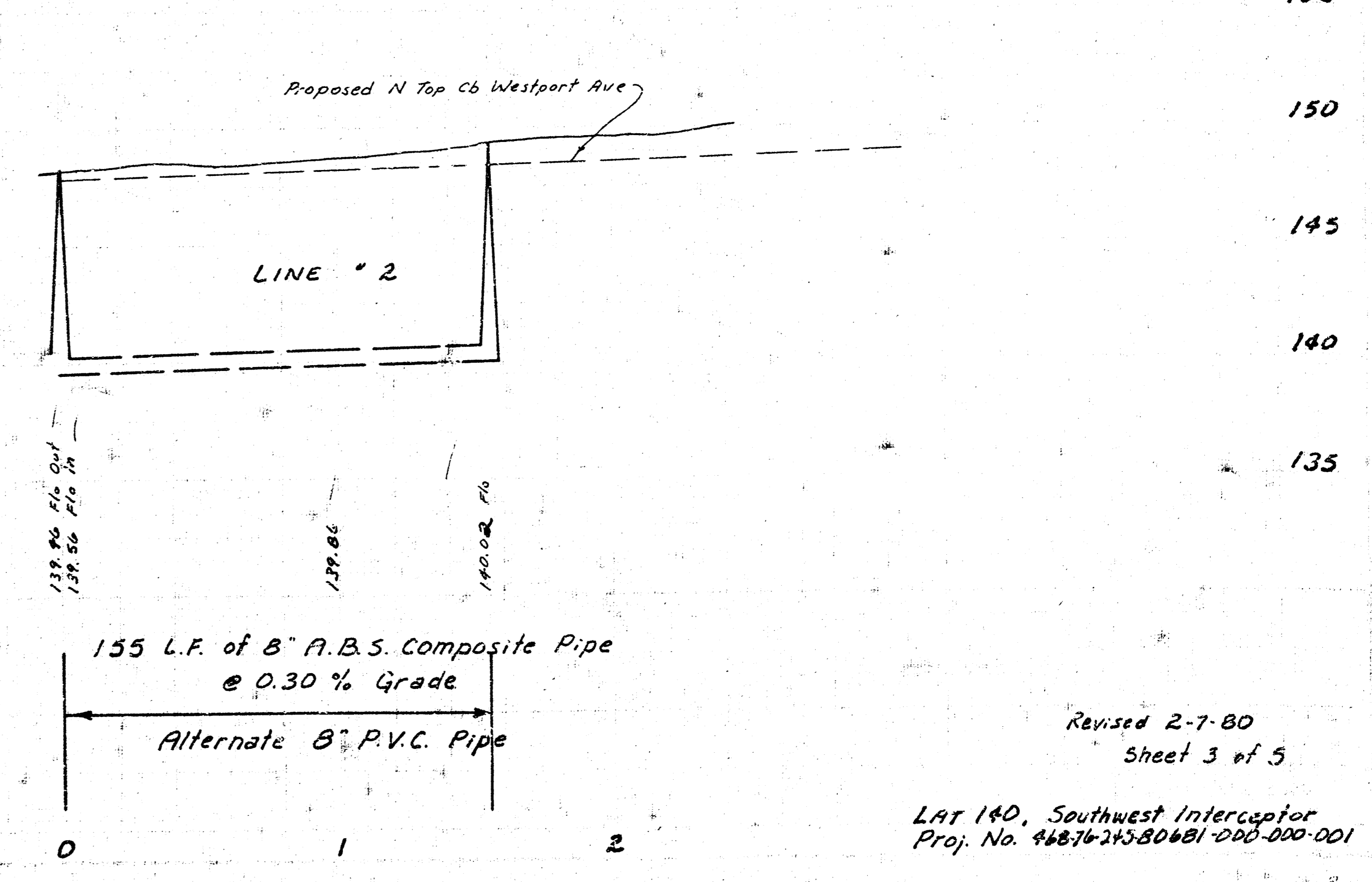
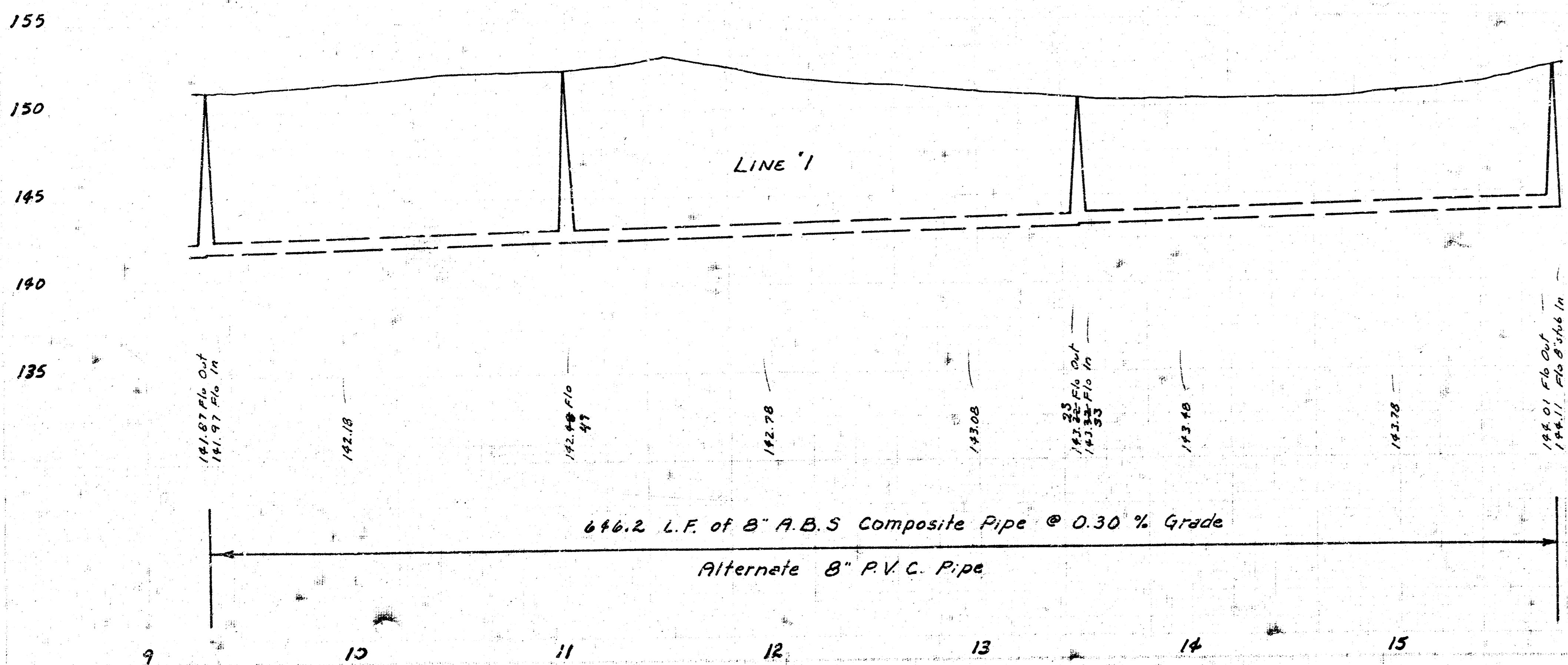
Sta 11+02 Const.
Std. M.H. Type "A" or "C"

Sta 13+75.5 Const.
Std. M.H. Type "A" or "C"

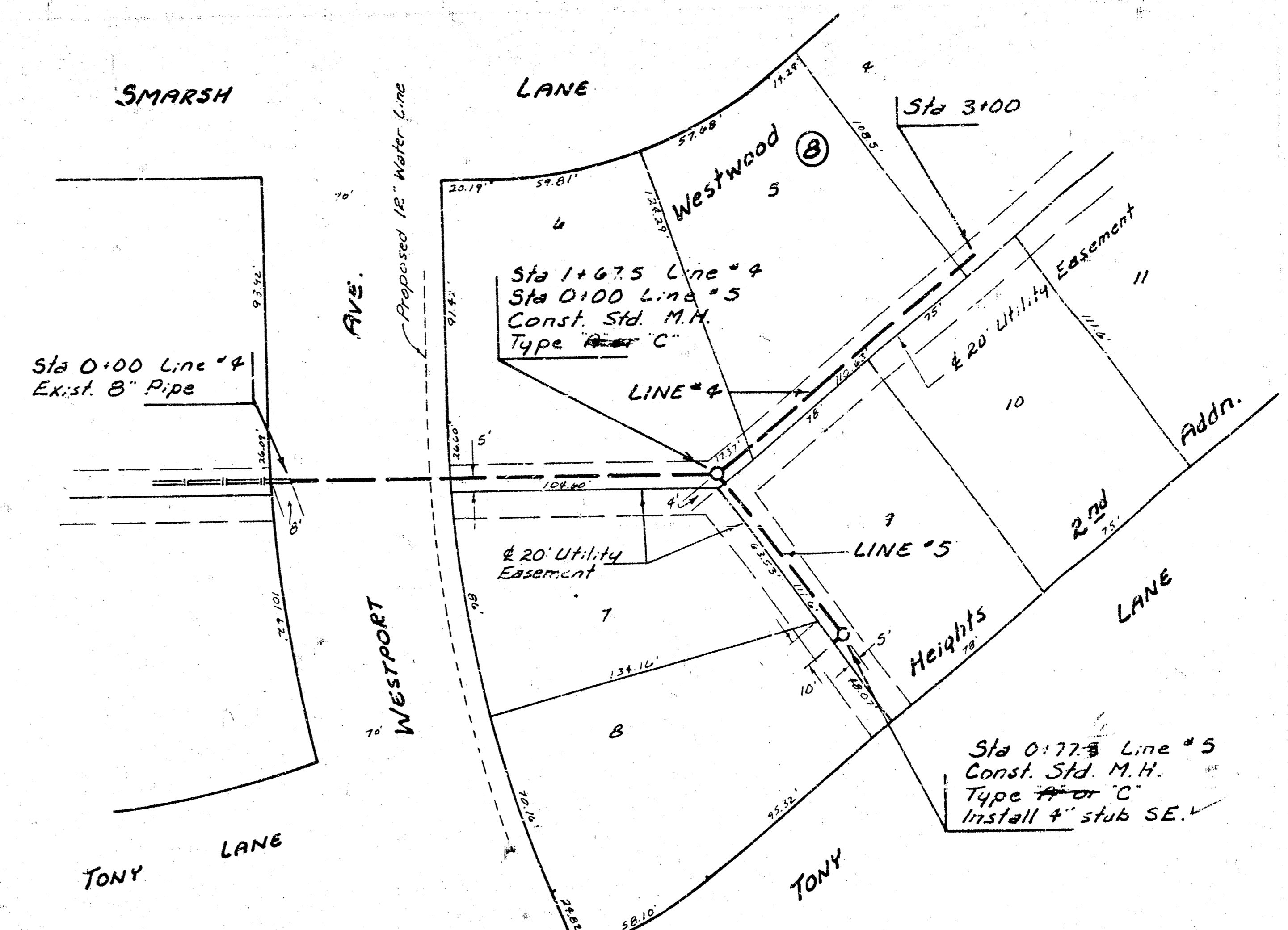
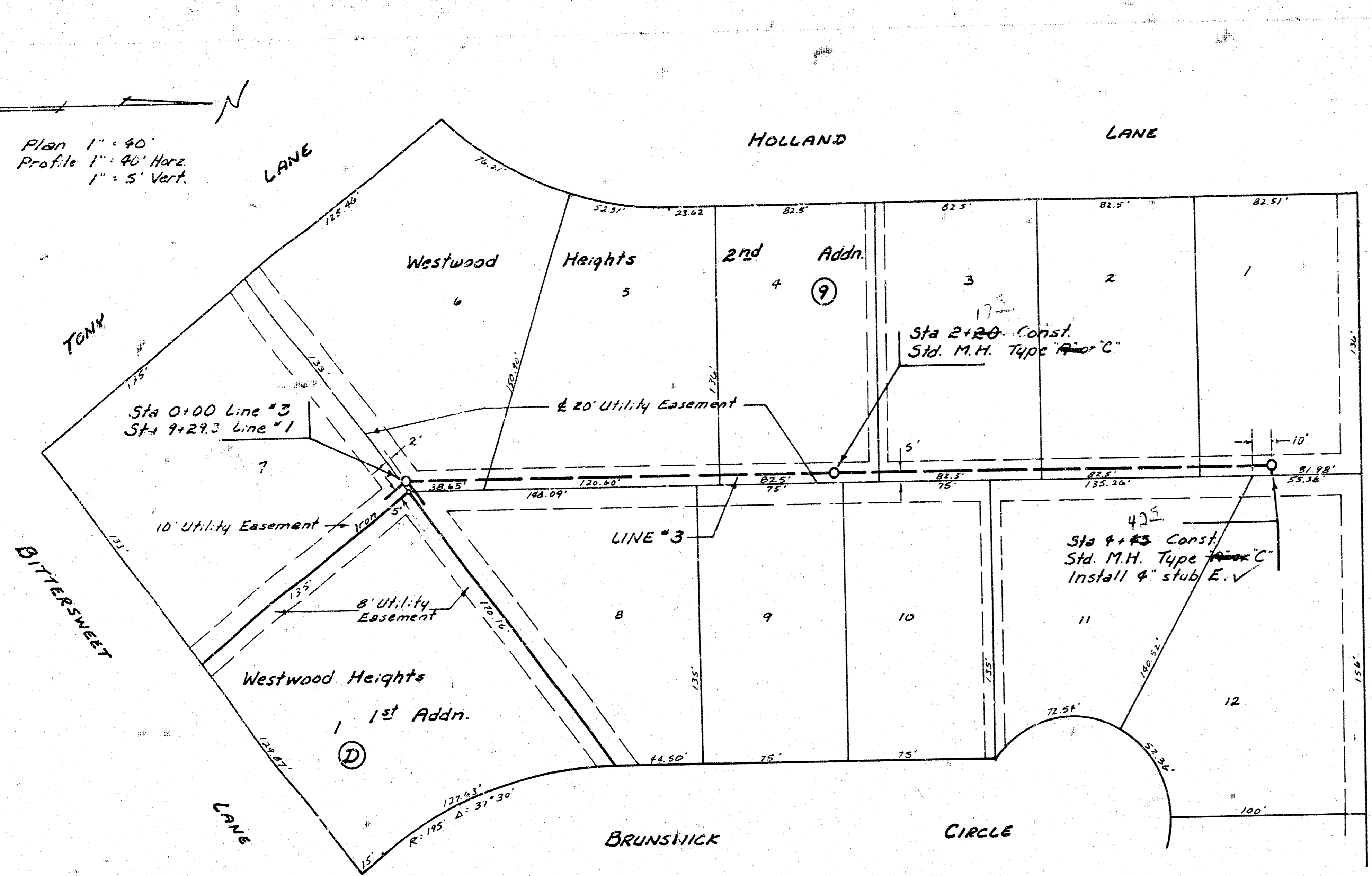
Sta 15+75.5 Const.
Std. M.H. Type "A" or "C".
Install 8" stub E.

Sta 0+00 Line #2
Sta 1+55 Line #1

Sta 1+55 Const. Std. M.H. Type "A" or "C".
Install 6" stubs NE, ESE.



Scale Plan 1" = 40'
 Profile 1" = 40' Horiz.
 1" = 5' Vert.



Sta 0+00 Line #3
 Sta 9+29.3 Line #1

Sta 2+20 Const. Std. M.H. Type 'A' or 'C'

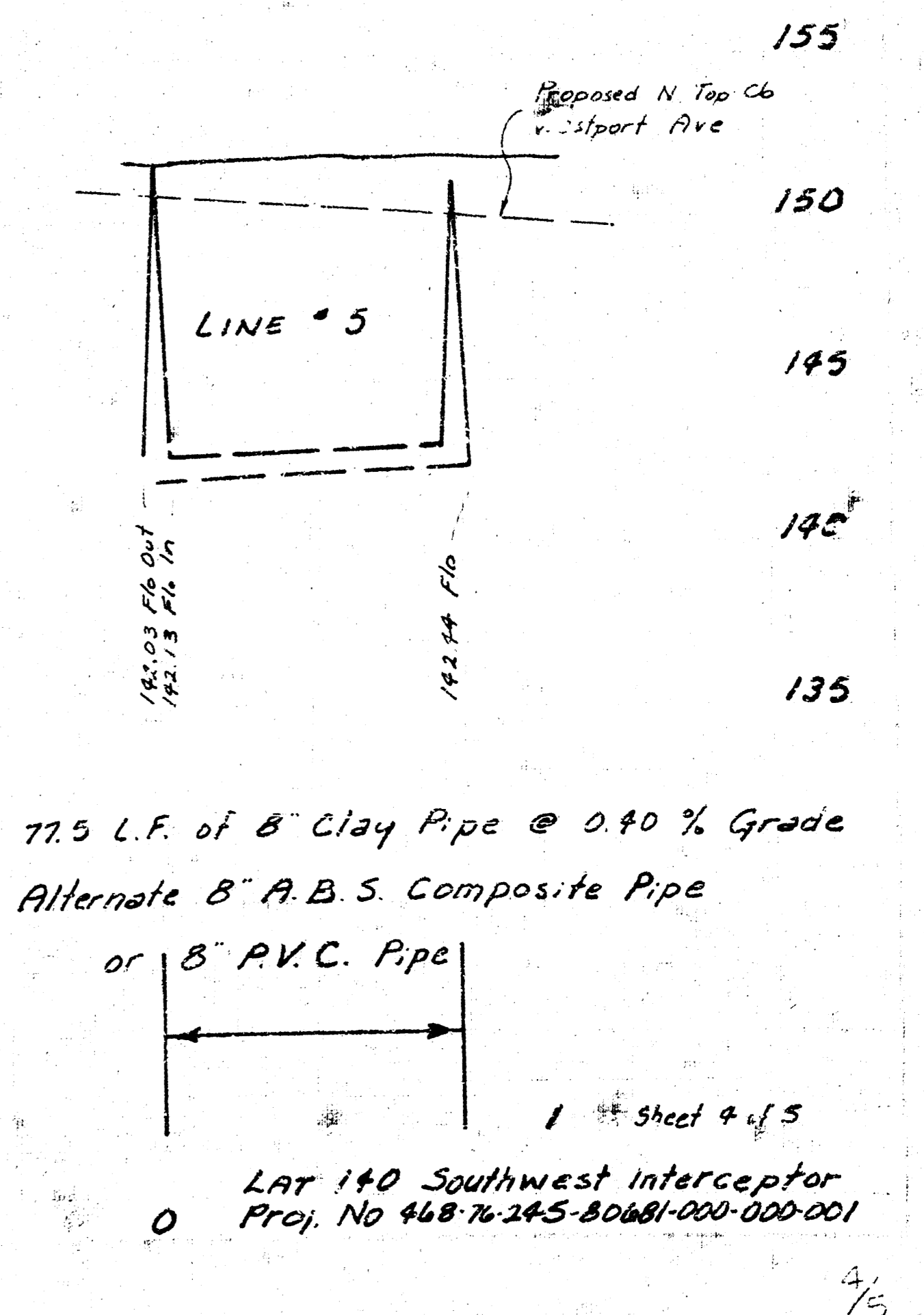
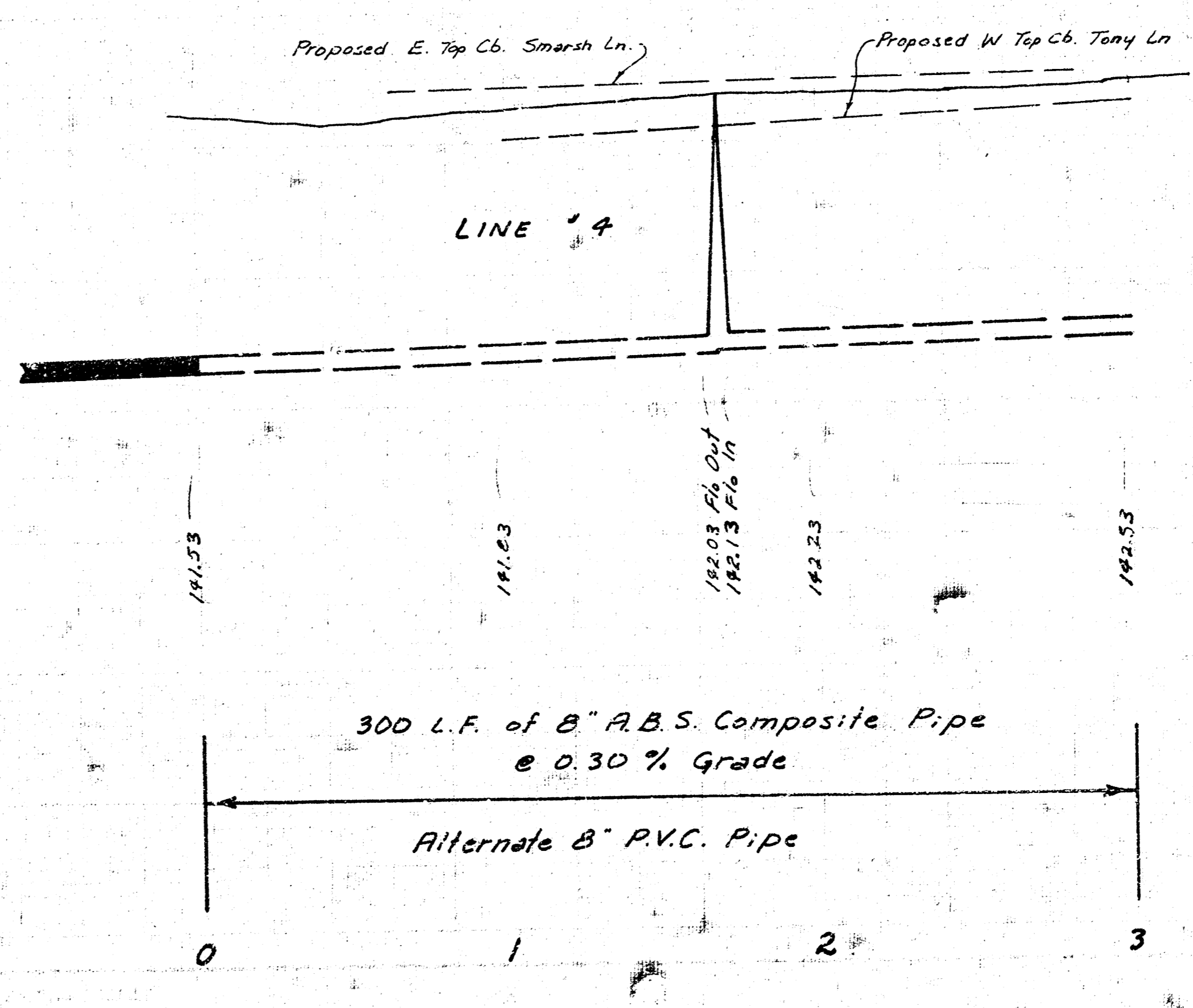
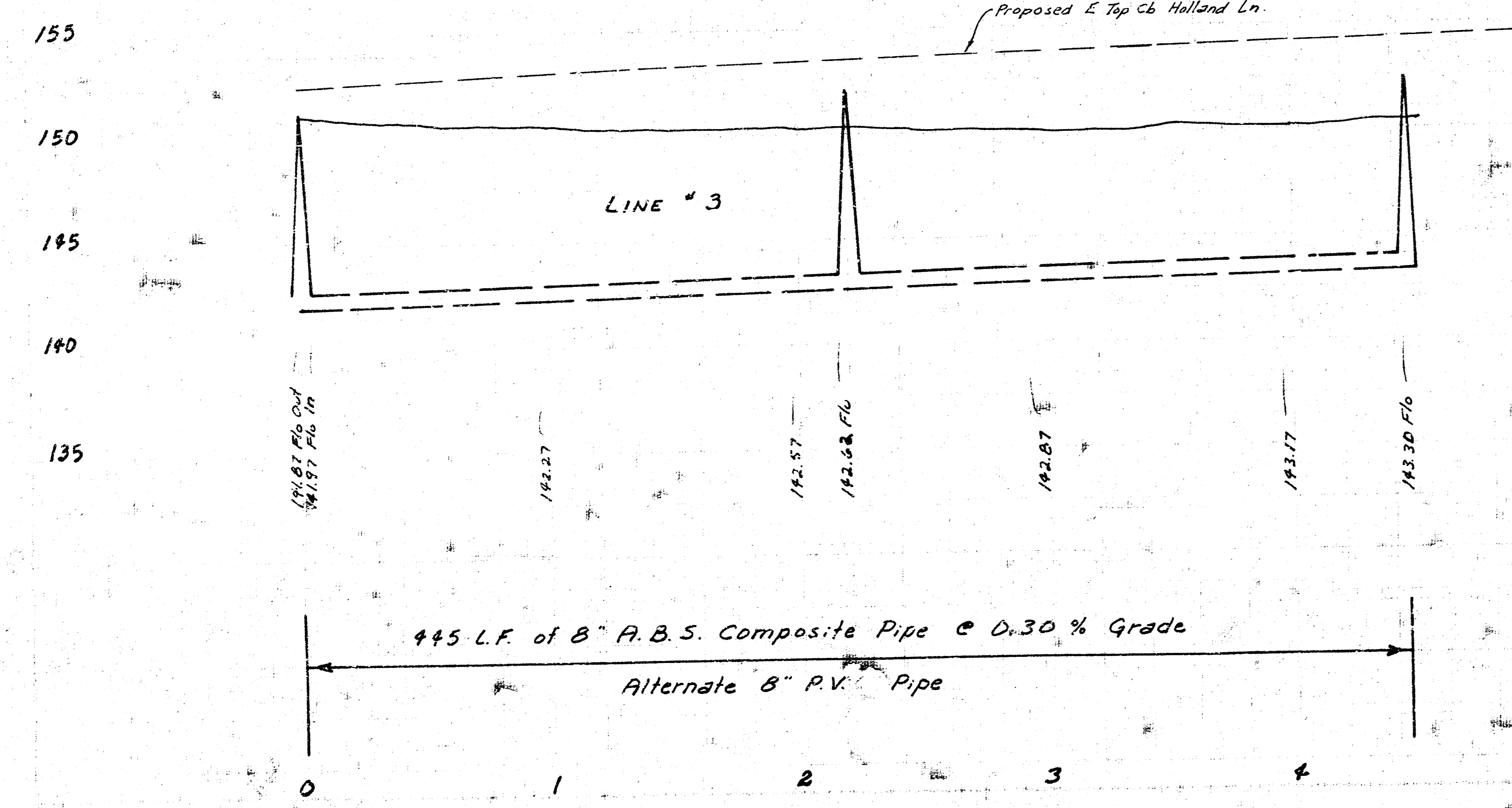
Sta 4+45 Const. Std. M.H. Type 'A' or 'C' Install 4" stub E.

Sta 0+00 Line #4 Exst. 8" Pipe

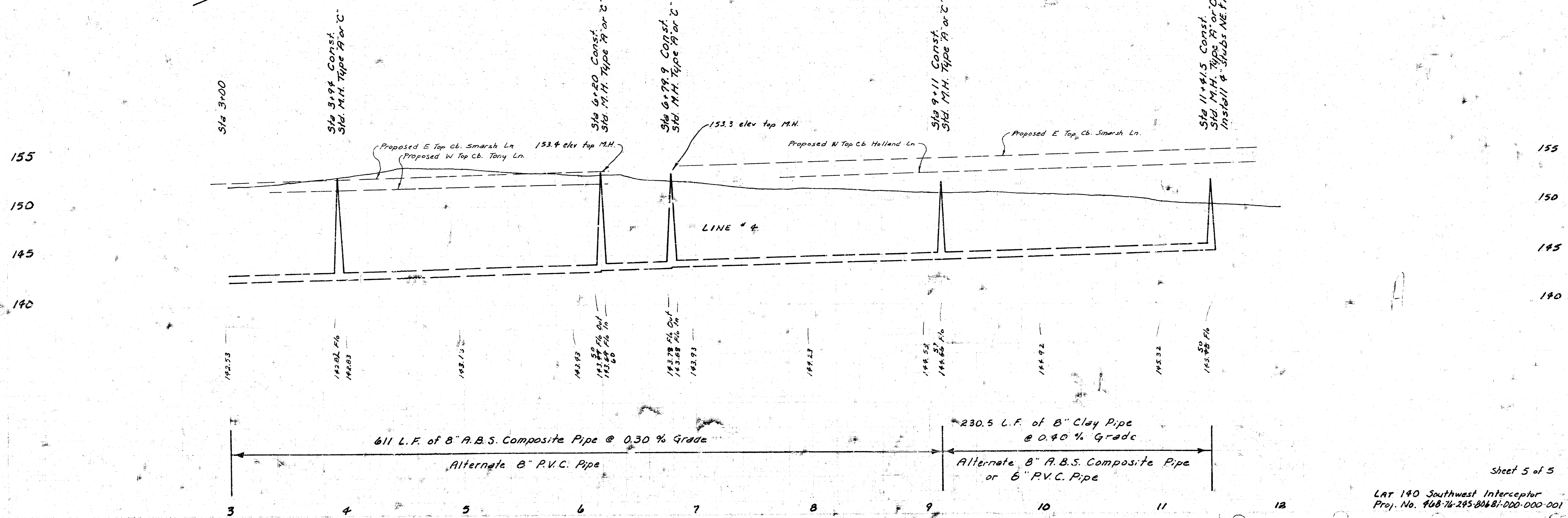
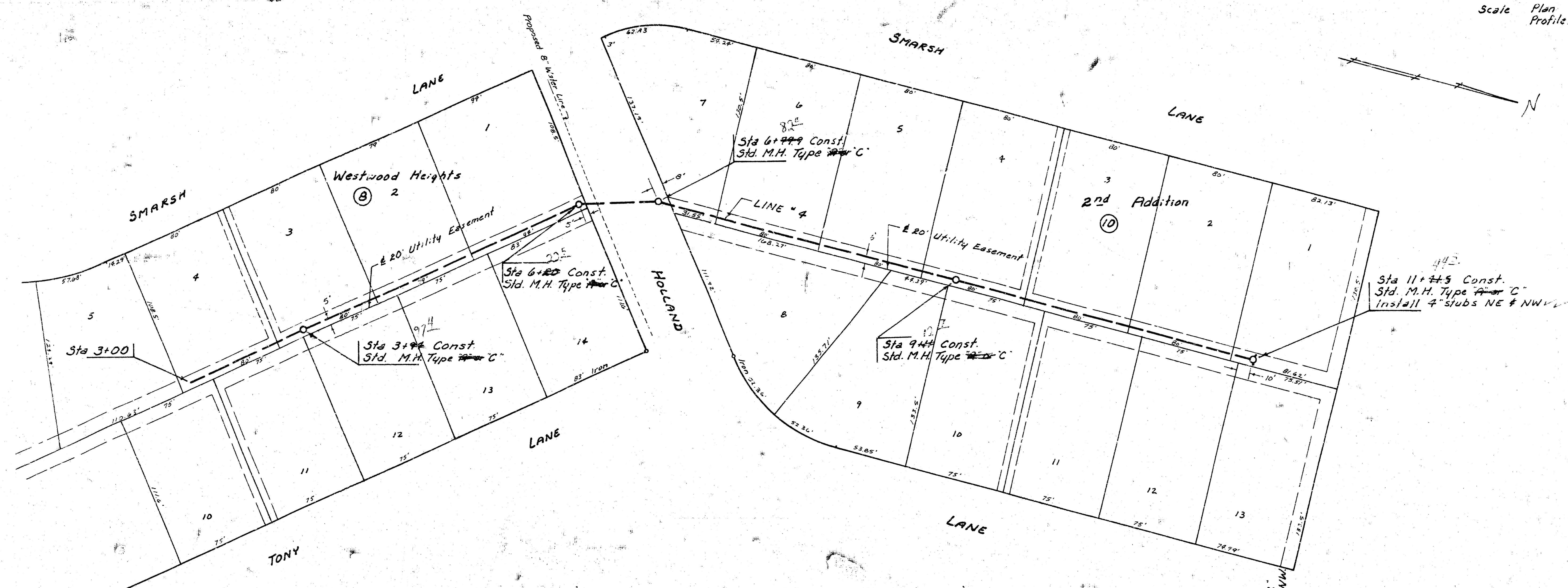
Sta 1+67.5 Line #4
 Sta 0+00 Line #5
 Const. Std. M.H. Type 'A' or 'C'

Sta 0+00 Line #5
 Sta 1+67.5 Line #4

Sta 0+77.5 Line #5
 Const. Std. M.H. Type 'A' or 'C' Install 4" stub SE.



Scale Plan 1"=40'
 Profile 1"=40' Horiz.
 1"=5' Vert.



Sheet 5 of 5

LAT 140 Southwest Interceptor
 Proj. No. 468-76-295-806B1-000-000-001

FILMED FROM THE BEST AVAILABLE COPY