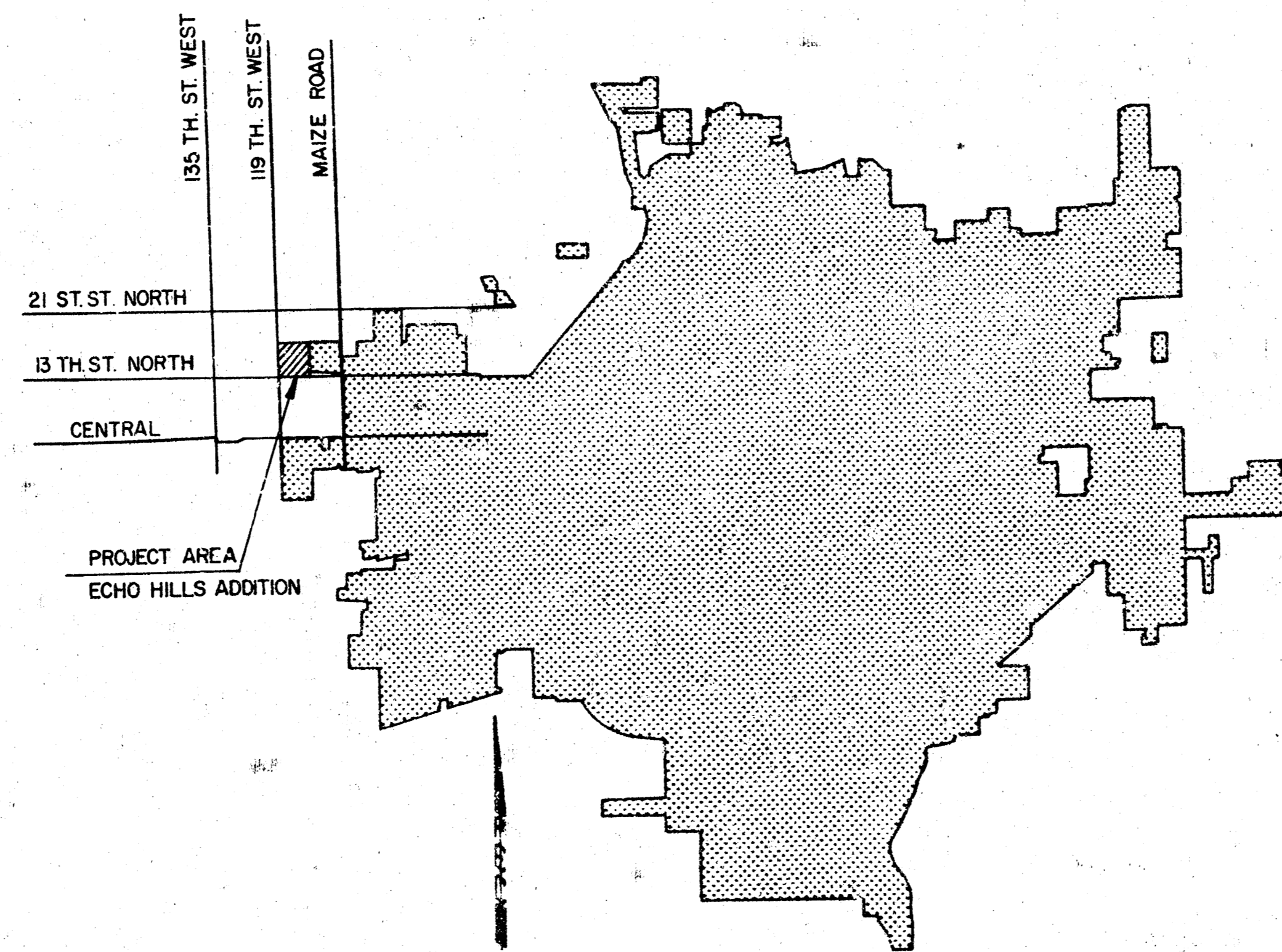


CONSTRUCTION PLANS FOR
LATERAL 151
 OF THE
SOUTHWEST INTERCEPTOR SEWER
 THE CITY OF WICHITA,
 SEDGWICK COUNTY, KANSAS

INDEX OF SHEETS

SHEET NO. 1	TITLE SHEET
SHEET NO. 2	PLAT, KEY MAP, & DETAILS
SHEET NO. 3	LATERAL 151, PLAN-PROFILE

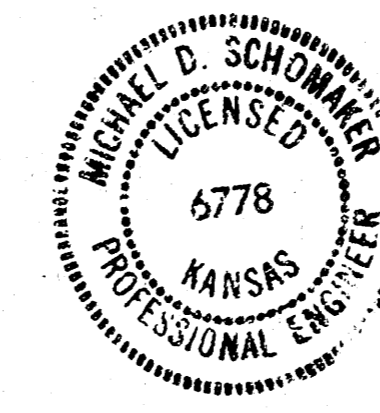
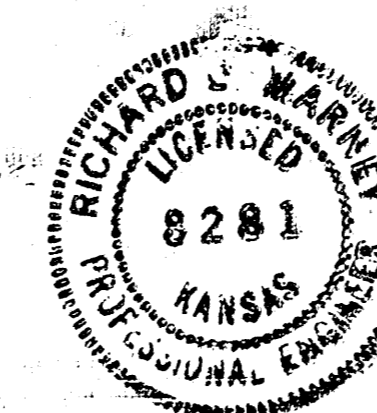


LOCATION MAP

CITY OF WICHITA PROJECT NO. 468-76-245-80921-000-000-001

APRIL, 1980

PLANS PREPARED BY



PROFESSIONAL ENGINEERING CONSULTANTS, P.A.
 ENGINEERS
 WICHITA, KANSAS

ECHO HILLS
AN ADDITION TO WICHITA SEDGWICK COUNTY, KANSAS

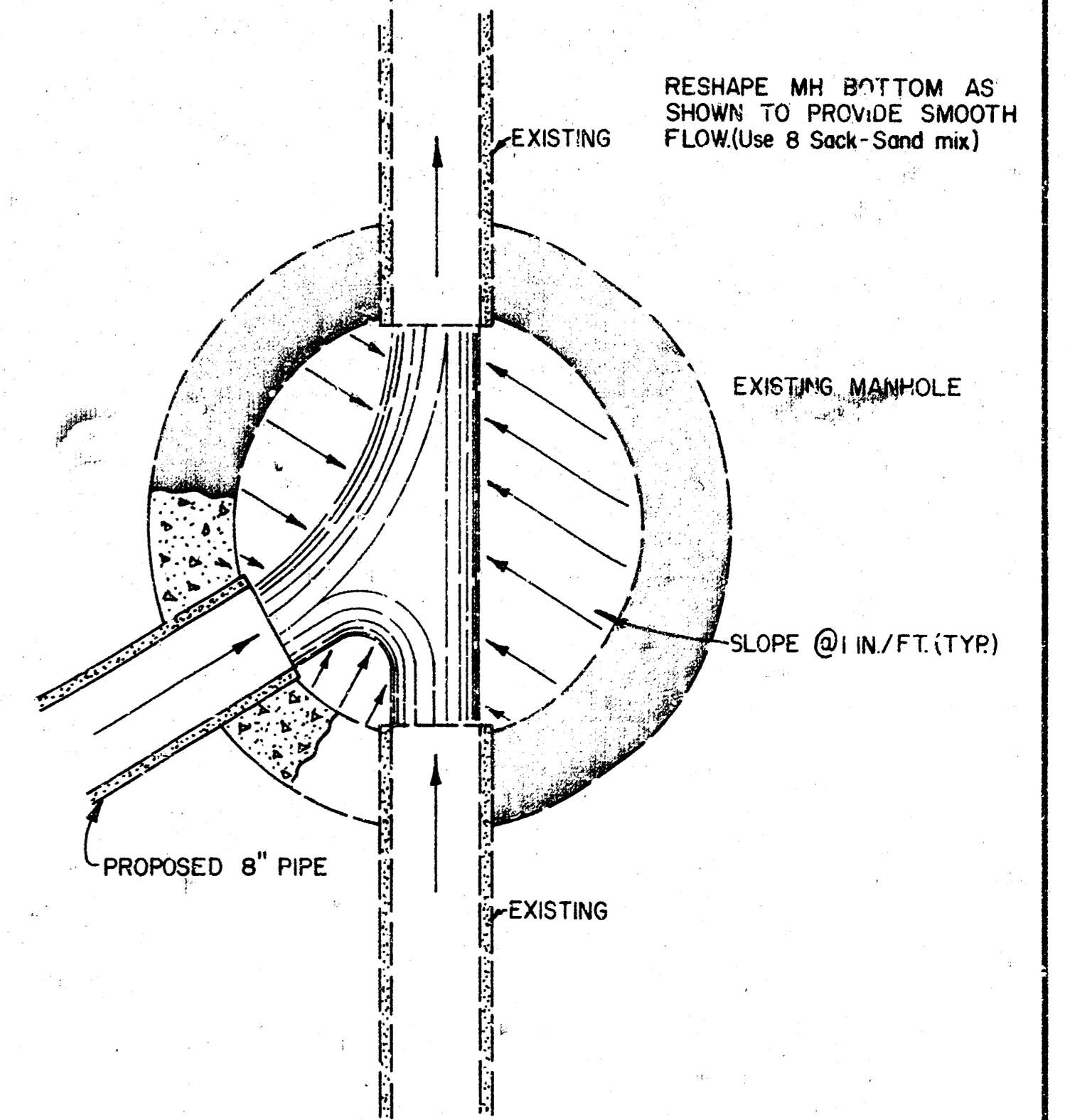
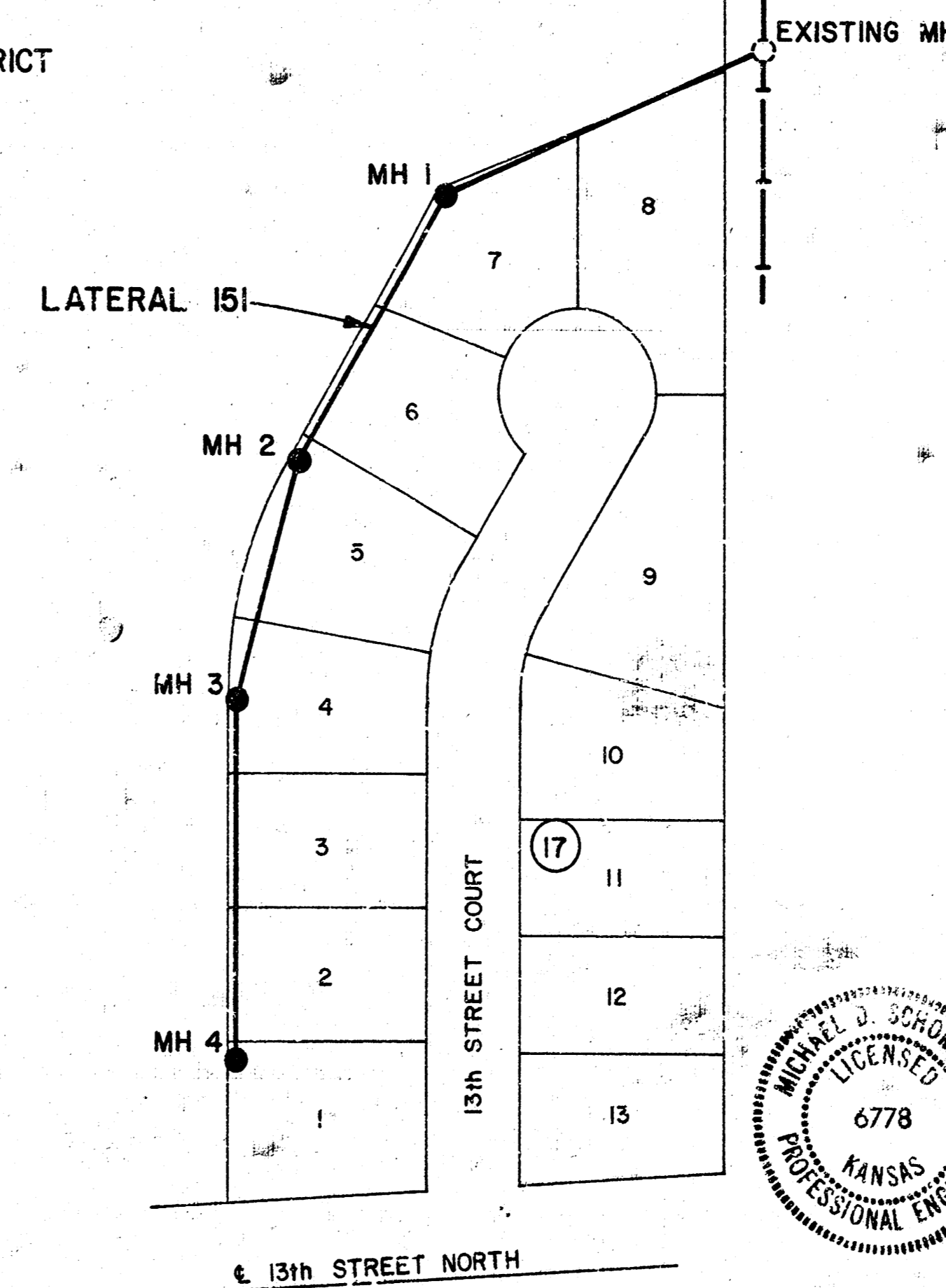
S.M. City Standard Brass Case in
Comp. 15' North E 30' East
of S. W. Corner Sec. 7,
T. 25. N. R. 14. E.
21st 1889 33

SCALE 1"=200'

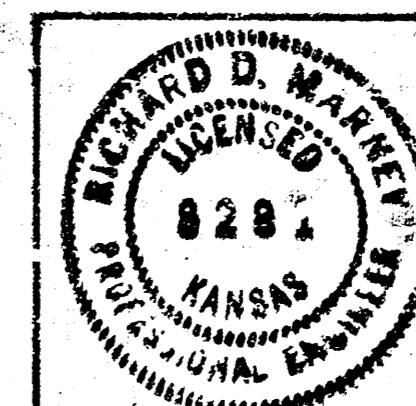
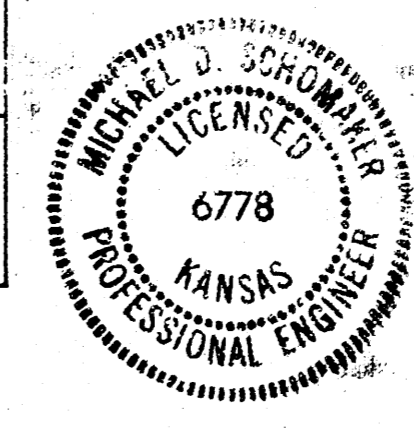


GENERAL NOTES

1. ALL CONSTRUCTION AND MATERIALS ARE TO COMPLY WITH CITY OF WICHITA SPECIFICATIONS AND STANDARDS.
2. ALL ELEVATIONS SHOWN ON THE PLANS ARE BASED ON CITY OF WICHITA DATUM.
3. TREES INDICATED TO BE REMOVED MAY BE SPARED AT THE CONTRACTOR'S OPTION.
4. THE CONTRACTOR SHALL OBTAIN PERMISSION FROM THE ENGINEER PRIOR TO TRIMMING OR REMOVING ANY TREES NOT SO INDICATED ON THE PLANS.
5. TREE REMOVAL AND TREE TRIMMING SHALL BE DONE BY THE CONTRACTOR UNDER THE SUPERVISION OF THE ENGINEER AND SHALL BE CONSIDERED SUBSIDIARY TO THE PRICE BID FOR CLEARING RIGHT-OF-WAY.
6. TREES REMOVED, TREE TRIMMINGS, FENCES, AND OTHER DEBRIS SHALL BE HAULED FROM THE SITE BY THE CONTRACTOR AND WASTED AS DIRECTED BY THE ENGINEER AT NO ADDITIONAL COST TO THE OWNER.
7. ALL PROPERTY IRONS DISTURBED BY CONSTRUCTION SHALL BE RESET BY THE FIELD ENGINEER.
8. THE CONTRACTOR SHALL BE RESPONSIBLE FOR MAINTAINING CONTINUOUS FLOW OF SEWAGE THROUGH THE EXISTING MANHOLE DURING CONSTRUCTION. CONTRACTOR'S PROPOSED METHOD FOR MAINTAINING SEWAGE FLOW SHALL BE APPROVED BY THE ENGINEER. ANY COST OF MAINTAINING FLOW OF SEWAGE DURING CONSTRUCTION WILL NOT BE PAID FOR DIRECTLY AND THIS COST SHALL BE CONSIDERED AS SUBSIDIARY TO THE OTHER ITEMS OF WORK.
9. THE FIELD ENGINEER SHALL SET TOPS OF MANHOLES TO MATCH THE PROPOSED FINISHED GRADE.
10. ALL FENCES DESIGNATED FOR REMOVAL ON THE PLANS SHALL BE REMOVED TO THE NEAREST FENCE POST AS DIRECTED BY THE ENGINEER.
THE CONTRACTOR SHALL OBTAIN PERMISSION FROM THE ENGINEER PRIOR TO REMOVING ANY FENCE NOT SO INDICATED ON THE PLANS.
11. THE CONTRACTOR HAS COMPLETE ACCESS AND USE OF THE LAND FOR STORAGE ENCOMPASSED BY THE ECHO HILLS PLAT WITH THE EXCEPTION SHOWN.
12. THE CONTRACTOR SHALL SPREAD ALL WASTE EXCAVATED SOIL WITHIN THE BOUNDARIES PROVIDED BY THE DEVELOPER. THIS SOIL SHALL BE COMPACTED IN ACCORDANCE WITH THE REQUIREMENTS FOR TYPE B COMPACTION AS OUTLINED IN SECTION 210 OF THE KANSAS DEPARTMENT OF TRANSPORTATION "STANDARDS SPECIFICATIONS FOR ROAD AND BRIDGE CONSTRUCTION, 1973 EDITION" THROUGH A SEPARATE CONTRACT WITH THE DEVELOPER.
13. CONTRACTOR TO BEGIN CONSTRUCTION WITHIN 10 DAYS AFTER ISSUANCE OF WORK ORDER, AND SHALL COMPLETE THE WORK WITHIN 20 WORKING DAYS THEREAFTER.
14. AT LEAST 48 HOURS PRIOR TO BEGINNING EXCAVATION (EXCLUDING WEEKENDS AND HOLIDAYS), THE CONTRACTOR SHALL CONTACT THE UTILITY LOCATION SERVICE "XAN-U-DIG-IT" AT (316) 267-2889 TO REQUEST THE FOLLOWING UTILITY COMPANIES TO LOCATE ANY EXISTING LINES WITHIN THE PROJECT AREA: GAS SERVICE COMPANY, K.G. & E., SOUTHWESTERN BELL TELEPHONE COMPANY, AND THE WICHITA WATER DEPARTMENT.



"BREAK IN" DETAIL



No.	Revision	By	Date
CITY OF WICHITA, KANSAS LATERAL 151 OF THE SOUTHWEST INTERCEPTOR SEWER PLAT, KEY MAP, & DETAILS C. of W. Proj. No. 468-76-245-8092'-000-000-001 PROFESSIONAL ENGINEERING CONSULTANTS, P.A. ENGINEERS WICHITA, KANSAS			
Designed by	RDM, MDS	Job No.	80080-1
Drawn by	RFJ	Date	APRIL, 1980
			Sht 2 of 2

