

LATERAL 200, S. W. INTERCEPTOR

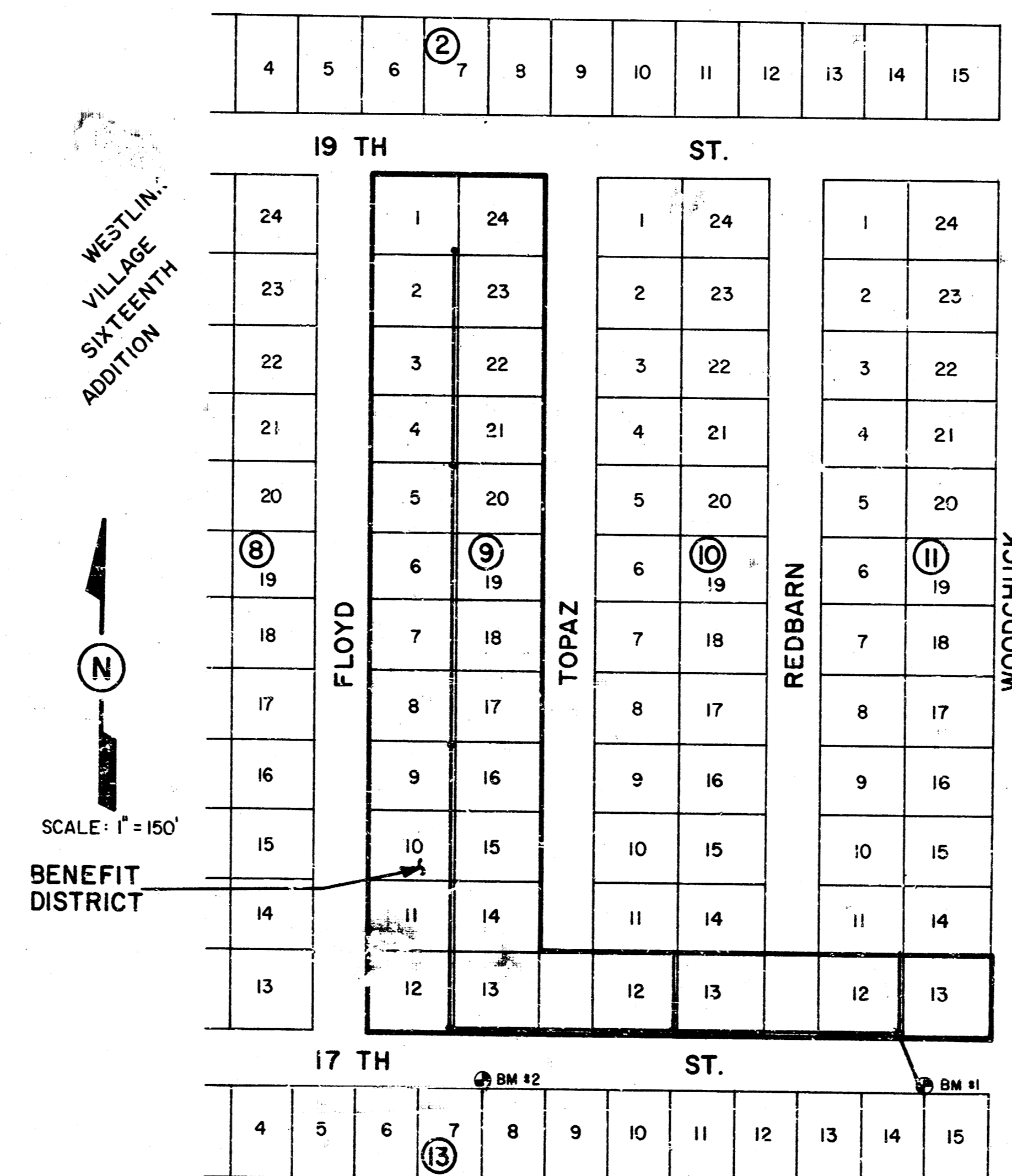
PROJECT NO.

468-76-245-81438-000-000-001

CITY OF WICHITA, KANSAS
MICHAEL E. LINDEBAK, CITY ENGINEER

GENERAL NOTES

1. The contractor shall be responsible for preserving property irons. The contractor shall be required to re-establish any property irons which are damaged or destroyed by his construction operations. Such irons shall be re-established by a licensed land surveyor or a licensed professional engineer in accordance with state laws.
2. Contractor shall contact Kan U Dig It, phone no. 267-2809 and/or the operating authority responsible for each utility, prior to construction. The contractor shall be responsible for location of all utilities, and shall protect all utilities from damage due to construction operations. All costs of repair and restoration of existing utilities damaged by the contractor shall be the responsibility of the contractor.
3. All work required to complete the project in accordance with the plans and standard specifications not specifically listed in the bid form shall be considered incidental to the project.



INDEX

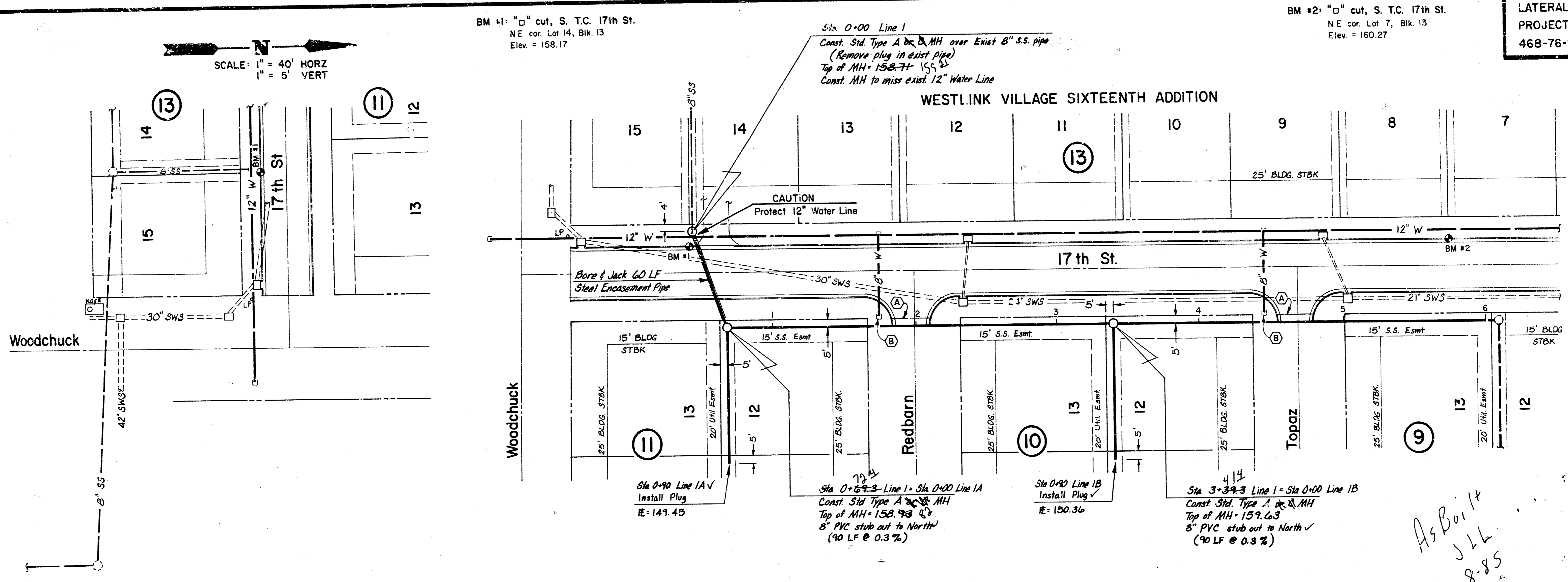
- 1 Title Sheet
- 2-3 Plan Profile
- 4 Type A Manhole Detail
- 5 Type C Manhole Detail
- 6 Final Plat



Van Doren Hazard Stallings
Architects - Engineers - Planners

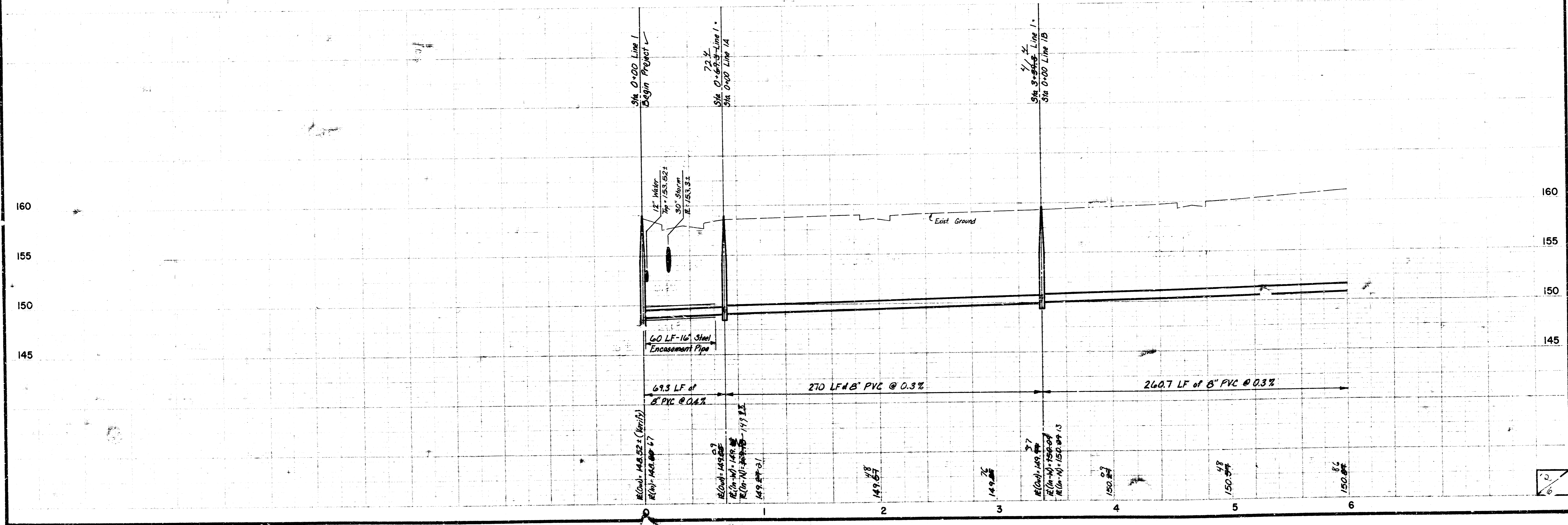
Sheet 1
1/2

LATERAL 200, S.W. INTERCEPTOR
 PROJECT NO.
 468-76-245-81438-000-001



NOTES
 (A) Saw Cut, remove conc curb & gutter & asphalt as rapid. Cost incidental (2 places)
 (B) Caution: Protect Water Line stubs (2 places)

As Built
 JLL
 8-85



SCALE: 1" = 40' HORZ
 1" = 5' VERT

SCALE: 1" = 40' HORZ
 1" = 5' VERT

BM #1: "o" cut, S. T.C. 17th St.
 NE cor. Lot 14, Blk 13
 Elev. = 158.17

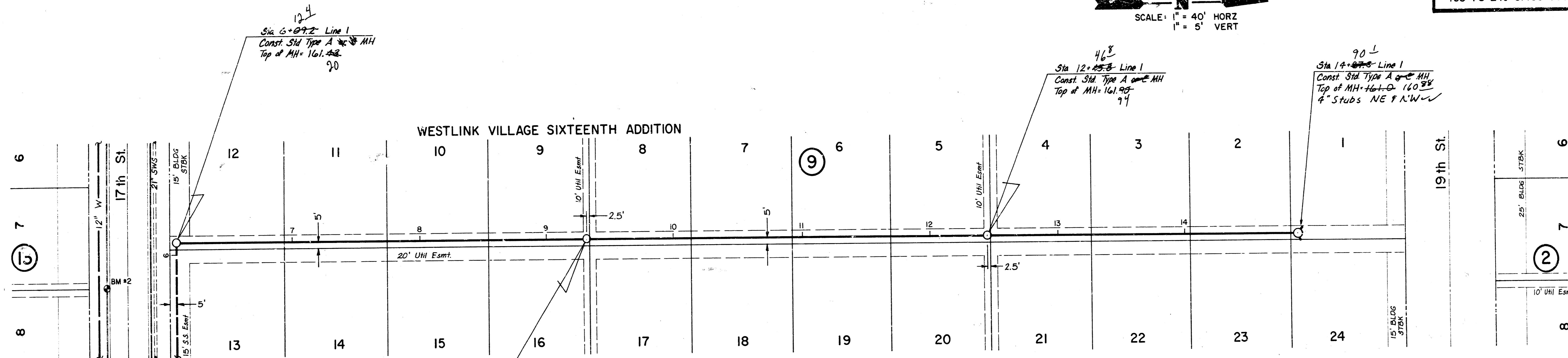
BM #2: "o" cut, S. T.C. 17th St.
 NE cor. Lot 7, Blk 13
 Elev. = 160.27

WESTLINK VILLAGE SIXTEENTH ADDITION

BM #2: "C" cut, S. T.C. 17th St.
 N.E. cor. Lot 7, Blk. 13
 Elev. = 160.27

LATERAL 200, S.W. INTERCEPTOR
 PROJECT NO.
 468-76-245-81438-000-000-001

SCALE: 1" = 40' HORZ
 1" = 5' VERT

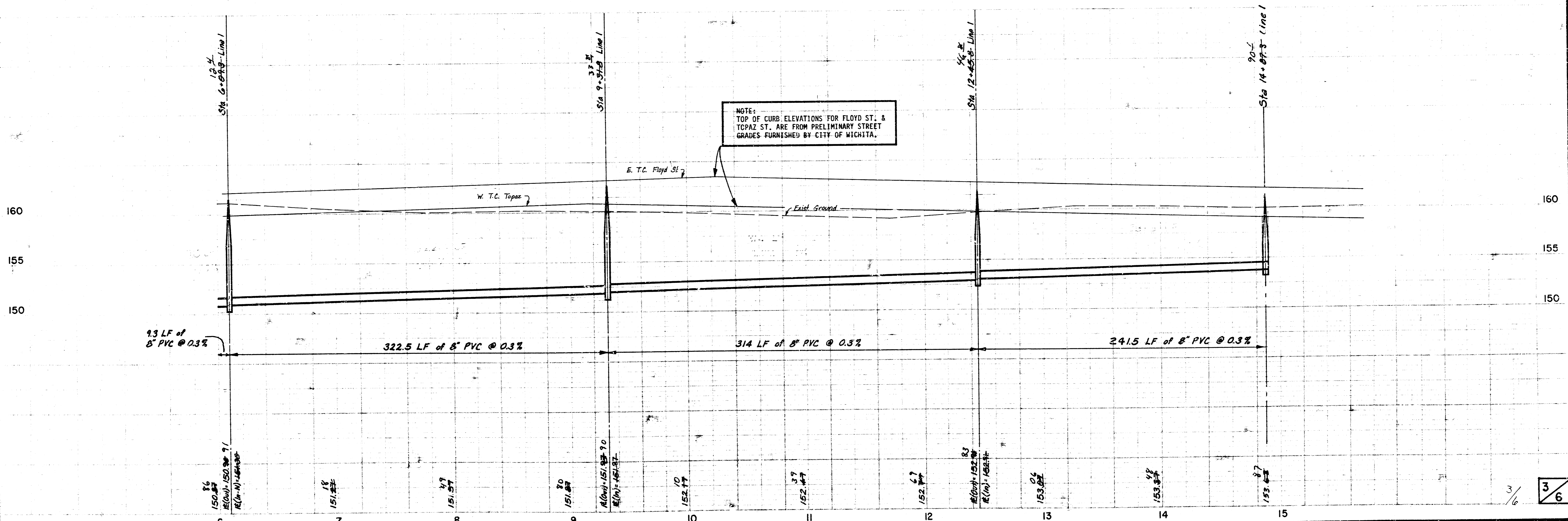


33[±]
 Sta 9+31.8 Line 1
 Const. Std. Type A MH
 Top of MH = 162.33
 47

46[±]
 Sta 12+45.8 Line 1
 Const. Std. Type A MH
 Top of MH = 161.95
 77

90[±]
 Sta 14+07.3 Line 1
 Const. Std. Type A MH
 Top of MH = 161.88
 4" Stubs NE & NW ✓

As Built
 J.L.L.
 8-85



NOTE:
 TOP OF CURB ELEVATIONS FOR FLOYD ST. &
 TOPAZ ST. ARE FROM PRELIMINARY STREET
 GRADES FURNISHED BY CITY OF WICHITA.

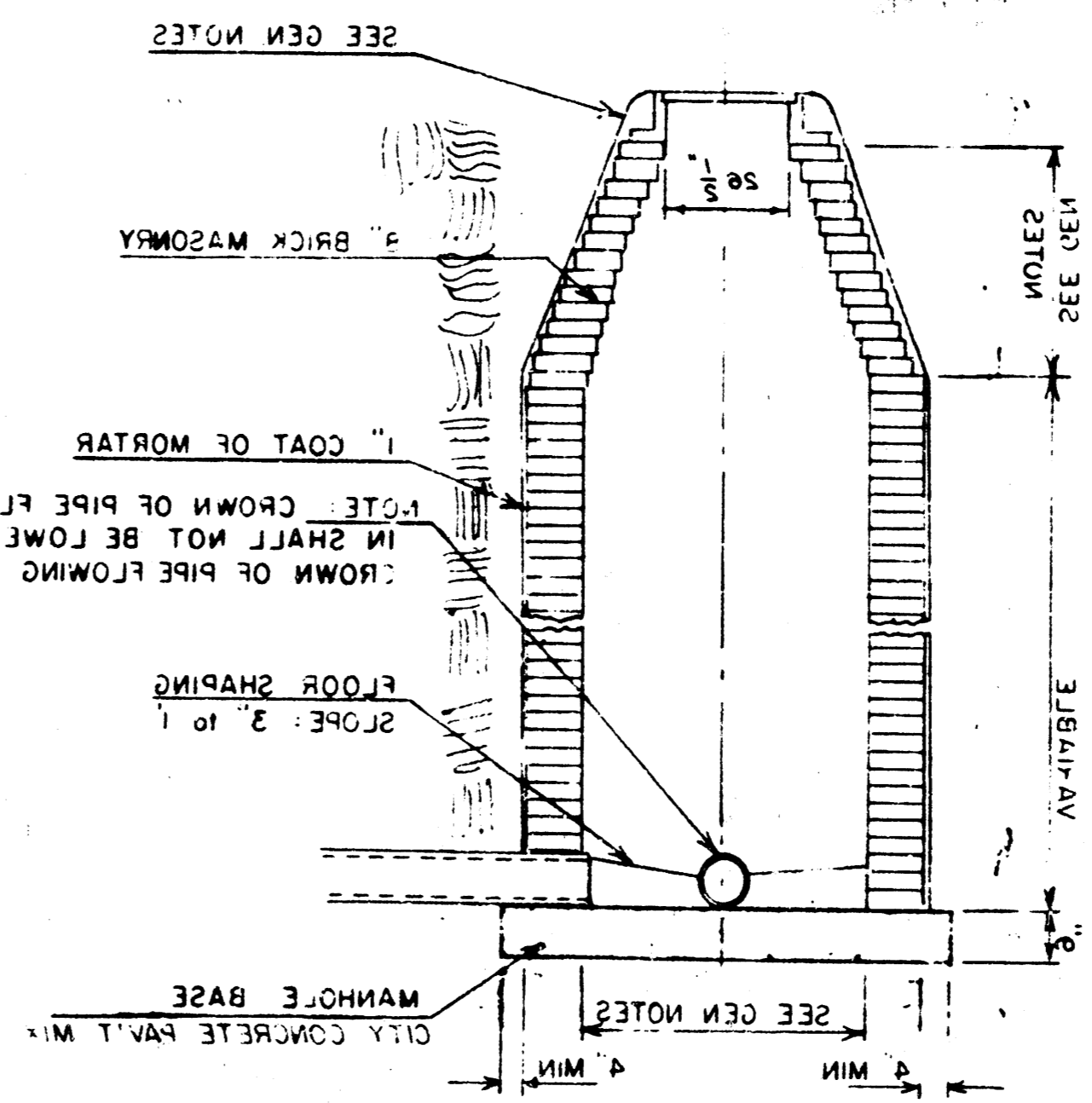
SEWER APPURTENANCES DETAILS

ADOPTED AS STANDARD DESIGN
BY

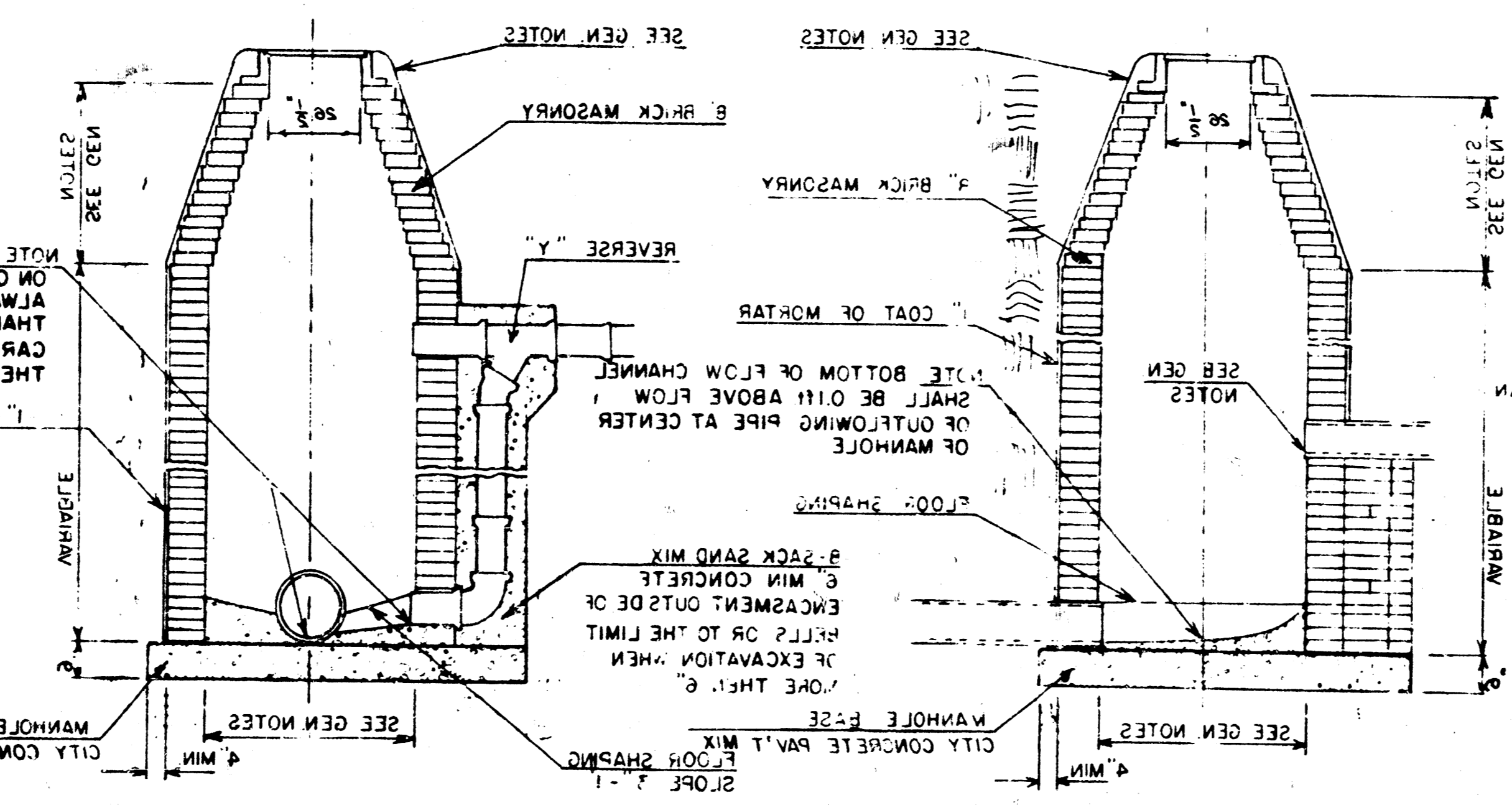
CITY of WICHITA, KANSAS

REVISED SEPTEMBER 1980

TYPE "A" MANHOLE

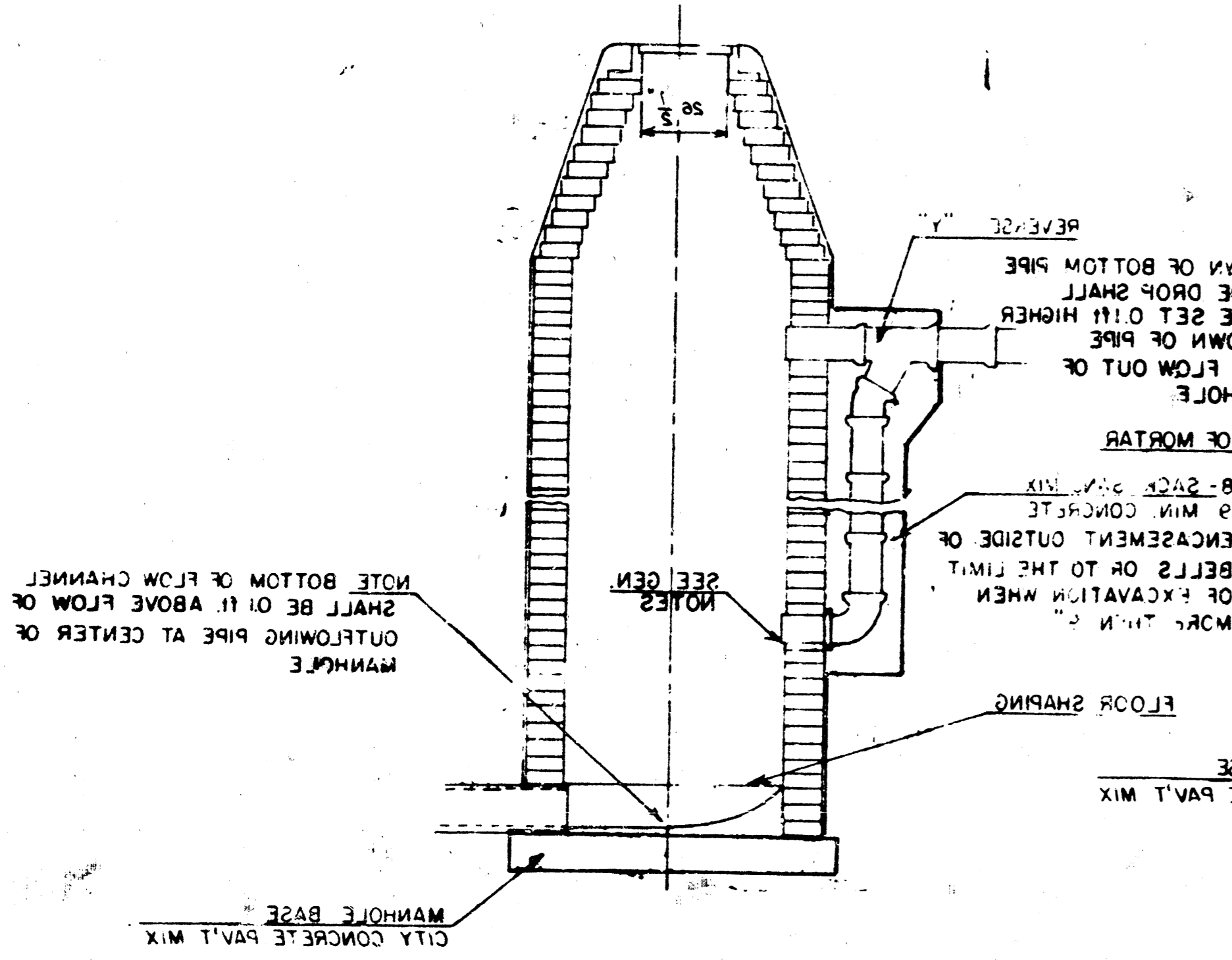


TYPE "A" INSIDE DROP MANHOLE



TYPE "A" OUTSIDE DROP MANHOLE

DETAIL OF OUTSIDE DROP
CONSTRUCTED ON EXISTING MANHOLE



SEE GEN NOTES

1. THE CROWN OF PIPE FLOWING IN SHALL NOT BE LOWER THAN THE CROWN OF PIPE FLOWING OUT OF THE MANHOLE.

2. THE FLOOR SHALL BE SLOPED TO THE RIGHT AT A MINIMUM OF 2 TO 1.

3. THE WALLS SHALL BE BUILT WITH BRICK MASONRY AND A 1" COAT OF MORTAR.

4. THE FLOOR SHALL BE BUILT WITH BRICK SAND MIX AND A 2" FLOOR SLANTING.

5. THE MANHOLE SHALL BE BUILT ON A CITY CONCRETE PAVT. MIX BASE.

6. THE TOP OF THE MANHOLE SHALL BE 2'10" ABOVE THE FLOOR.

7. THE MANHOLE SHALL BE BUILT TO A MINIMUM OF 4" ABOVE THE FLOOR.

8. THE MANHOLE SHALL BE BUILT TO A MINIMUM OF 4" ABOVE THE FLOOR.

9. THE MANHOLE SHALL BE BUILT TO A MINIMUM OF 4" ABOVE THE FLOOR.

10. THE MANHOLE SHALL BE BUILT TO A MINIMUM OF 4" ABOVE THE FLOOR.

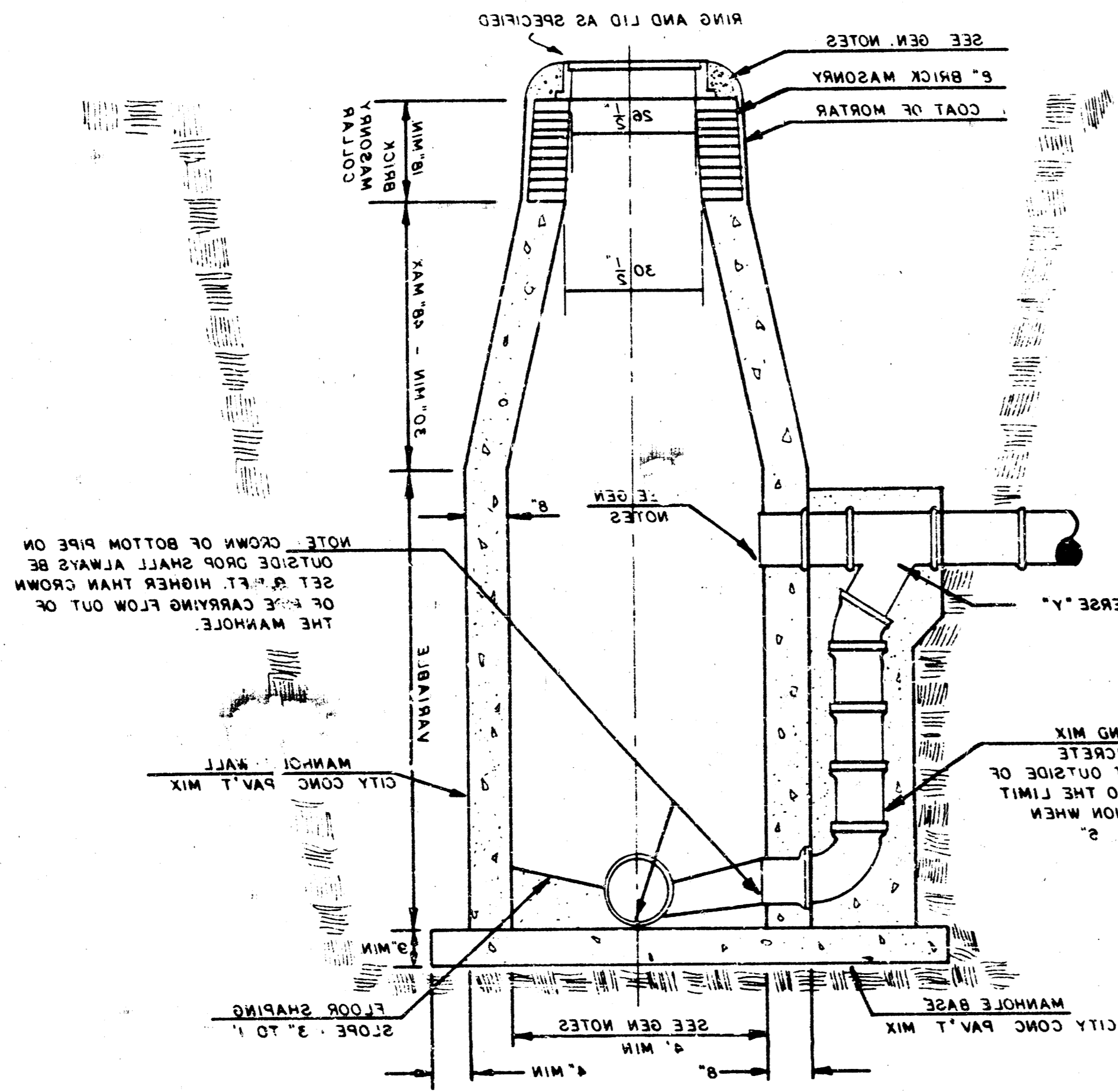
SEWER APPURTENANCES DETAILS

ADOPTED AS STANDARD DESIGN

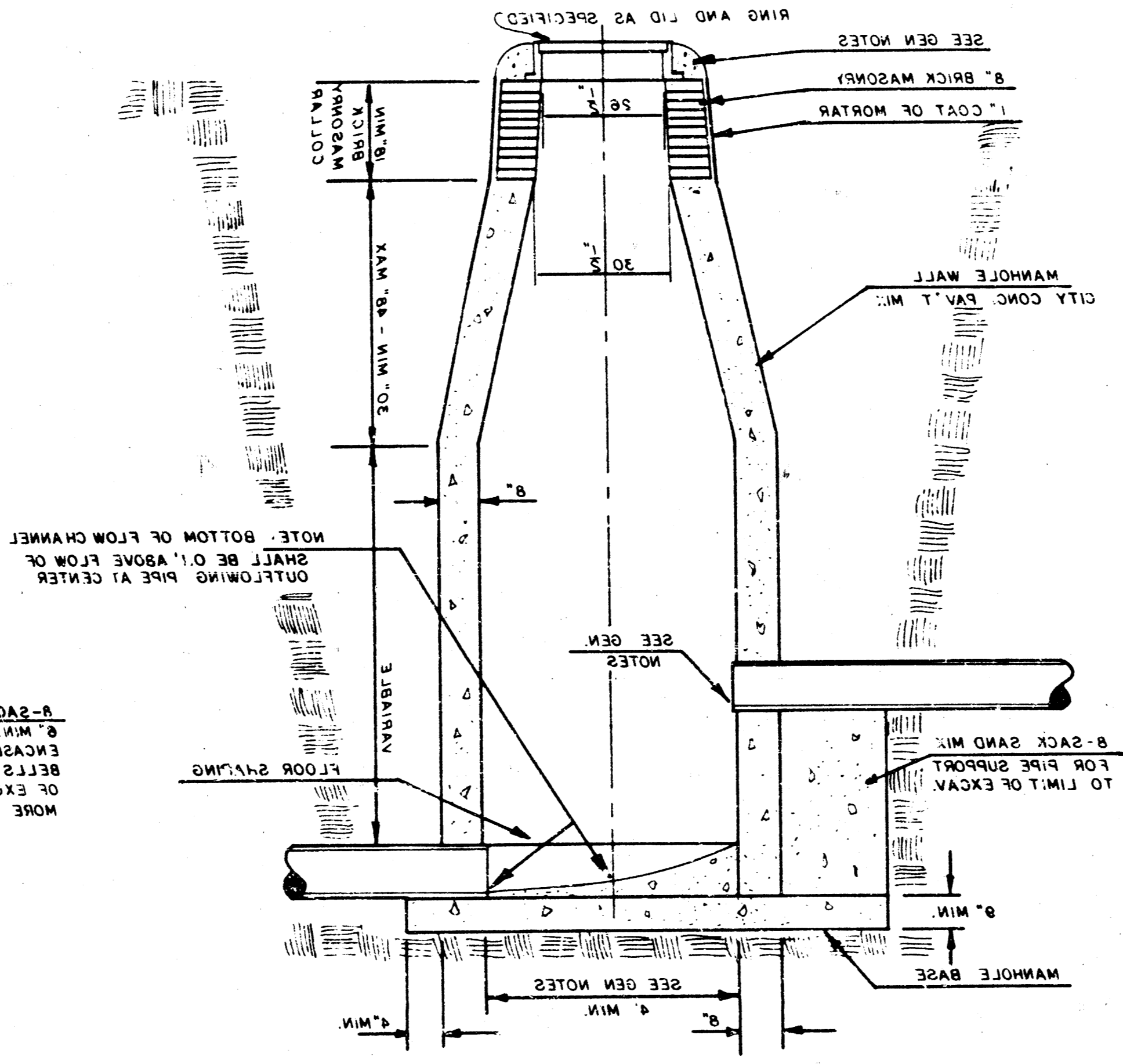
BY

City of Wichita, Kansas

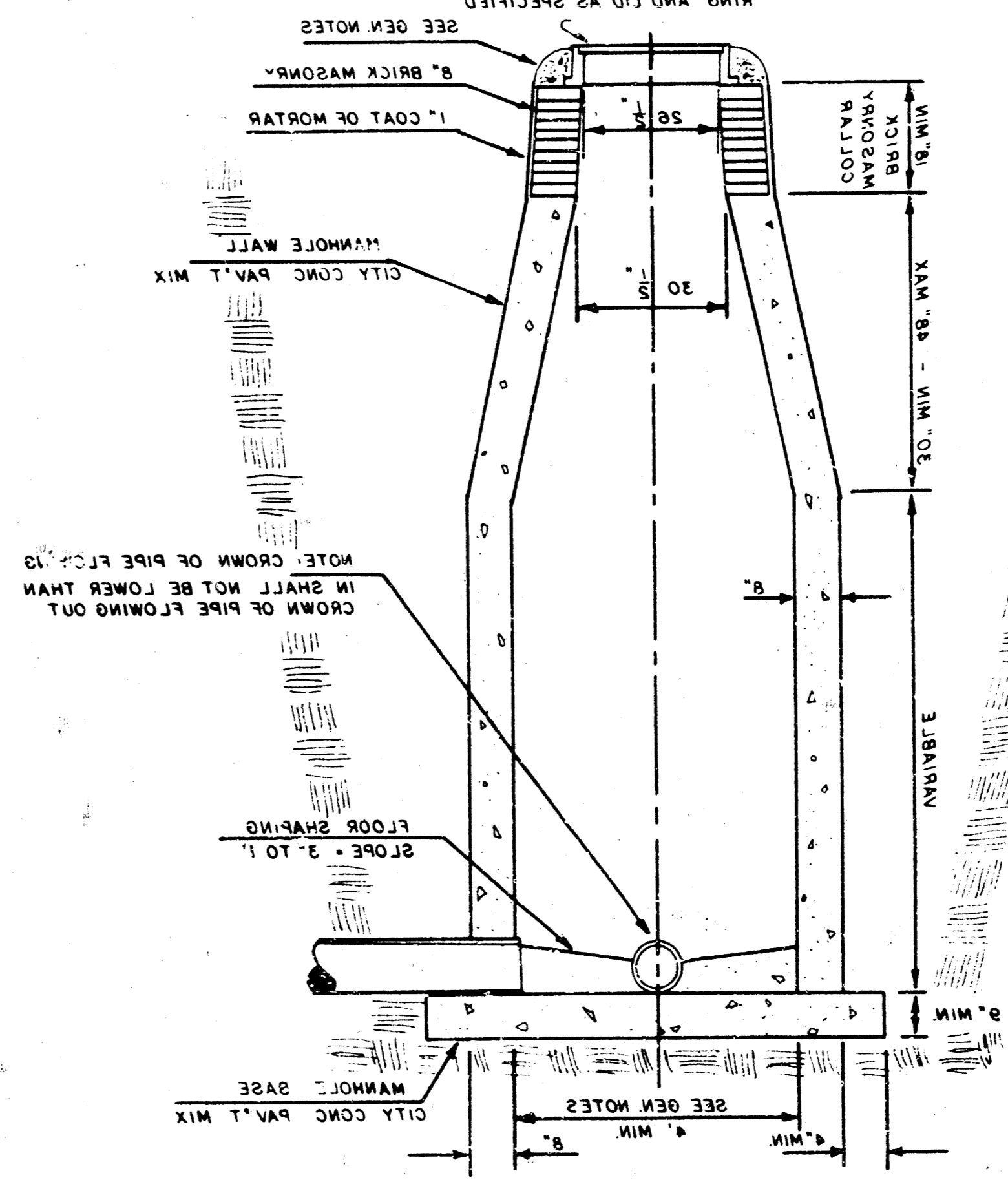
OUTSIDE DROP MANHOLE TYPE "C"



INSIDE DROP MANHOLE TYPE "C"



STANDARD MANHOLE TYPE "C"



Notes and specifications for the manhole details, including material requirements and construction instructions.

1. The manhole shall be constructed in accordance with the details shown on this drawing.

2. The manhole shall be constructed of brick masonry for the upper portion and concrete for the lower portion.

3. The manhole shall be constructed with a minimum diameter of 30 inches for the upper portion and 24 inches for the lower portion.

4. The manhole shall be constructed with a minimum depth of 6 feet below the finished ground level.

5. The manhole shall be constructed with a minimum height of 4 feet above the finished ground level.

6. The manhole shall be constructed with a minimum thickness of 4 inches for the brick masonry and 4 inches for the concrete.

7. The manhole shall be constructed with a minimum slope of 3 to 1 for the floor slapping.

8. The manhole shall be constructed with a minimum slope of 3 to 1 for the pipe support.

9. The manhole shall be constructed with a minimum slope of 3 to 1 for the pipe flange.

10. The manhole shall be constructed with a minimum slope of 3 to 1 for the pipe flange.

11. The manhole shall be constructed with a minimum slope of 3 to 1 for the pipe flange.

12. The manhole shall be constructed with a minimum slope of 3 to 1 for the pipe flange.

13. The manhole shall be constructed with a minimum slope of 3 to 1 for the pipe flange.

14. The manhole shall be constructed with a minimum slope of 3 to 1 for the pipe flange.

15. The manhole shall be constructed with a minimum slope of 3 to 1 for the pipe flange.

16. The manhole shall be constructed with a minimum slope of 3 to 1 for the pipe flange.

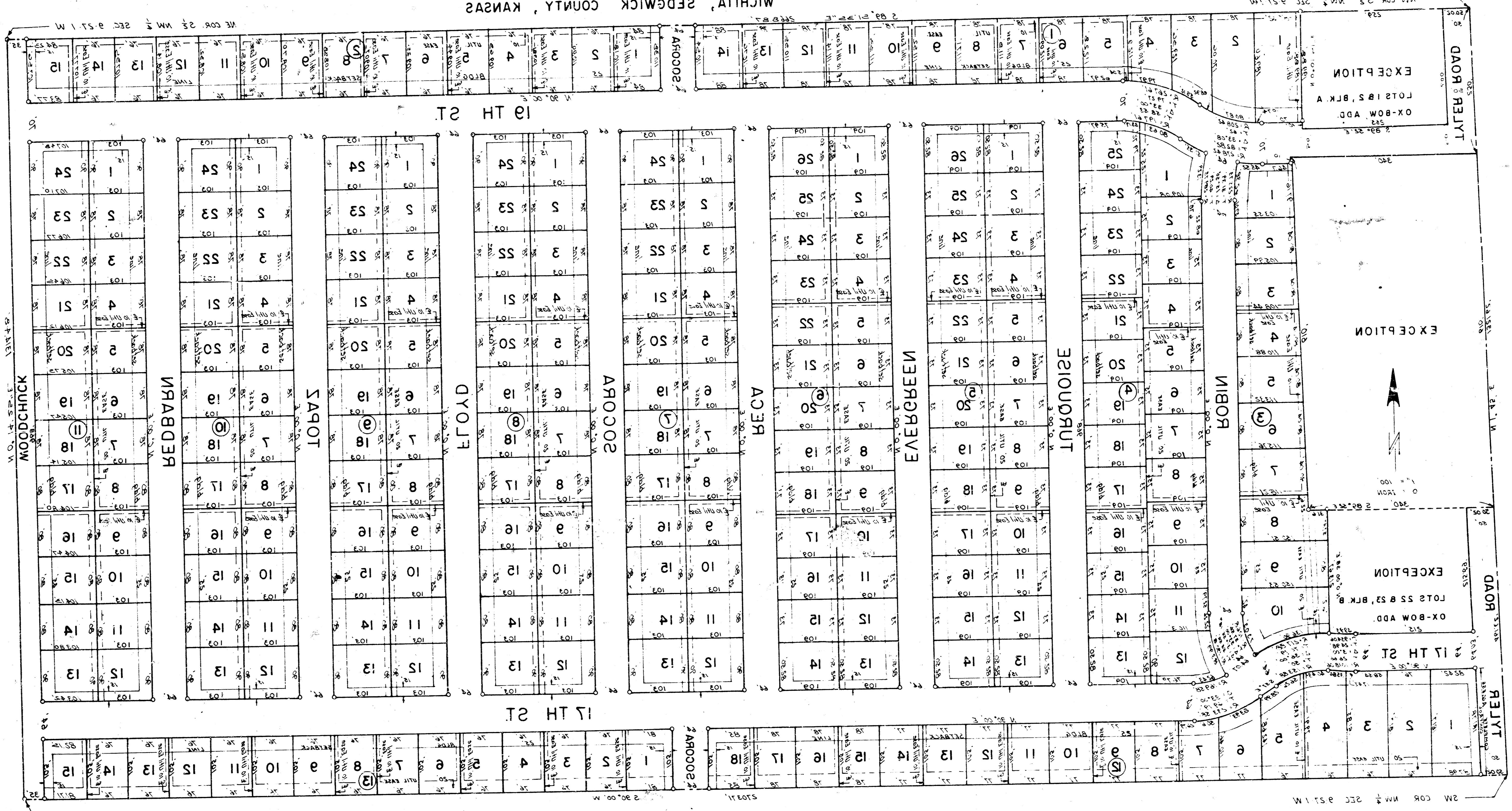
17. The manhole shall be constructed with a minimum slope of 3 to 1 for the pipe flange.

18. The manhole shall be constructed with a minimum slope of 3 to 1 for the pipe flange.

19. The manhole shall be constructed with a minimum slope of 3 to 1 for the pipe flange.

20. The manhole shall be constructed with a minimum slope of 3 to 1 for the pipe flange.

WESTLINK VILLAGE SIXTEENTH ADDITION WICHITA, SEDGWICK COUNTY, KANSAS



My Commission expires: Oct 7 1939
Attest: *[Signature]*
Notary Public
State of Kansas, County of Sedgewick, SS.
The foregoing instrument was acknowledged before me this 20th day of January, 1938, by Bill Saylor, President of the Fidelity Savings Association of Kansas, a corporation, on behalf of the corporation, and Bill Saylor, President of Fidelity Savings Association of Kansas, a corporation, on behalf of the corporation.

City of Wichita, Kansas, this 17th day of January, 1938.
This plat approved and all dedications shown hereon accepted by the Board of City Commissioners of the City of Wichita, Kansas.
Mayor: *[Signature]*
City Clerk: *[Signature]*
City Clerk: *[Signature]*
Secretary: *[Signature]*
Planning Commission: *[Signature]*
Wichita-Sedgewick County Metropolitan Area: *[Signature]*
Notary Public: *[Signature]*
My Commission expires: July 2 1938

Attest: *[Signature]* President
[Signature] Secretary
Now all men by these presents that Ox Bow Investments, Inc. by Earl M. Saylor, President, has caused the land described in the Civil Engineer's certificate to be placed in lots, blocks and streets to be known as "WESTLINK VILLAGE SIXTEENTH ADDITION", Wichita, Sedgewick County, Kansas. Utility easements as indicated on the plat are hereby granted for the construction and maintenance of all public utilities. The streets are hereby dedicated to and for the use of the public.
All rights of access to or from Tyler Road over and across the west line of lot 1, Block 15 are hereby granted to the City of Wichita.
Earl M. Saylor, President
Ox Bow Investments, Inc.

Attest: *[Signature]* County Clerk
[Signature] John Hale
[Signature] Tom Scott
[Signature] Everett Patrick
This is to certify that this instrument was filed for record in the Register of Deeds Office at 11:00 o'clock A.M. on the 17th day of January, 1938.
Registered on transfer record this 17th day of January, 1938.
[Signature] County Clerk
[Signature] Deputy
[Signature] Deeds
[Signature] Register of Deeds
This plat approved and all dedications shown hereon accepted by the Board of County Commissioners of Sedgewick County, Kansas, this 17th day of January, 1938.