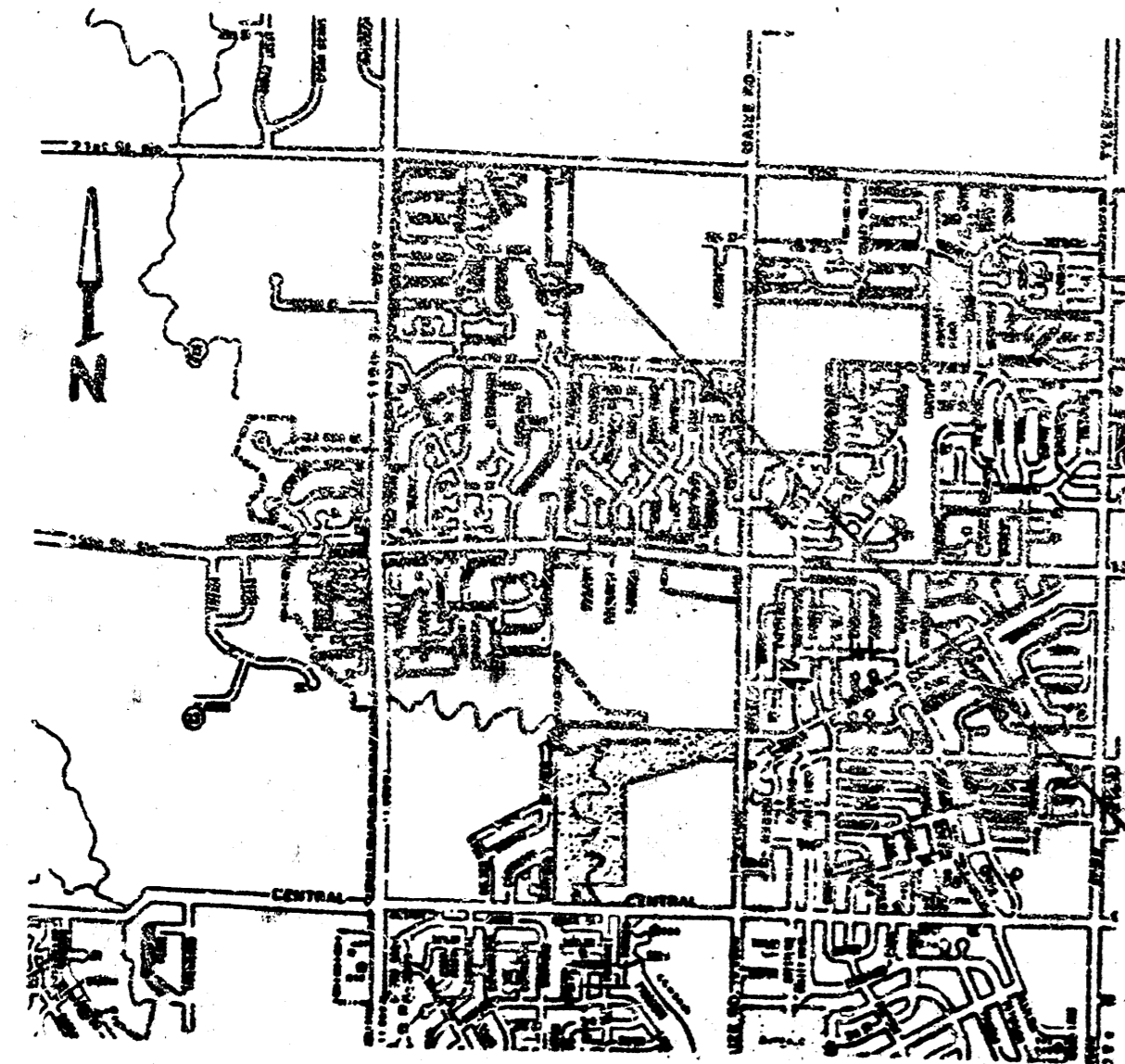


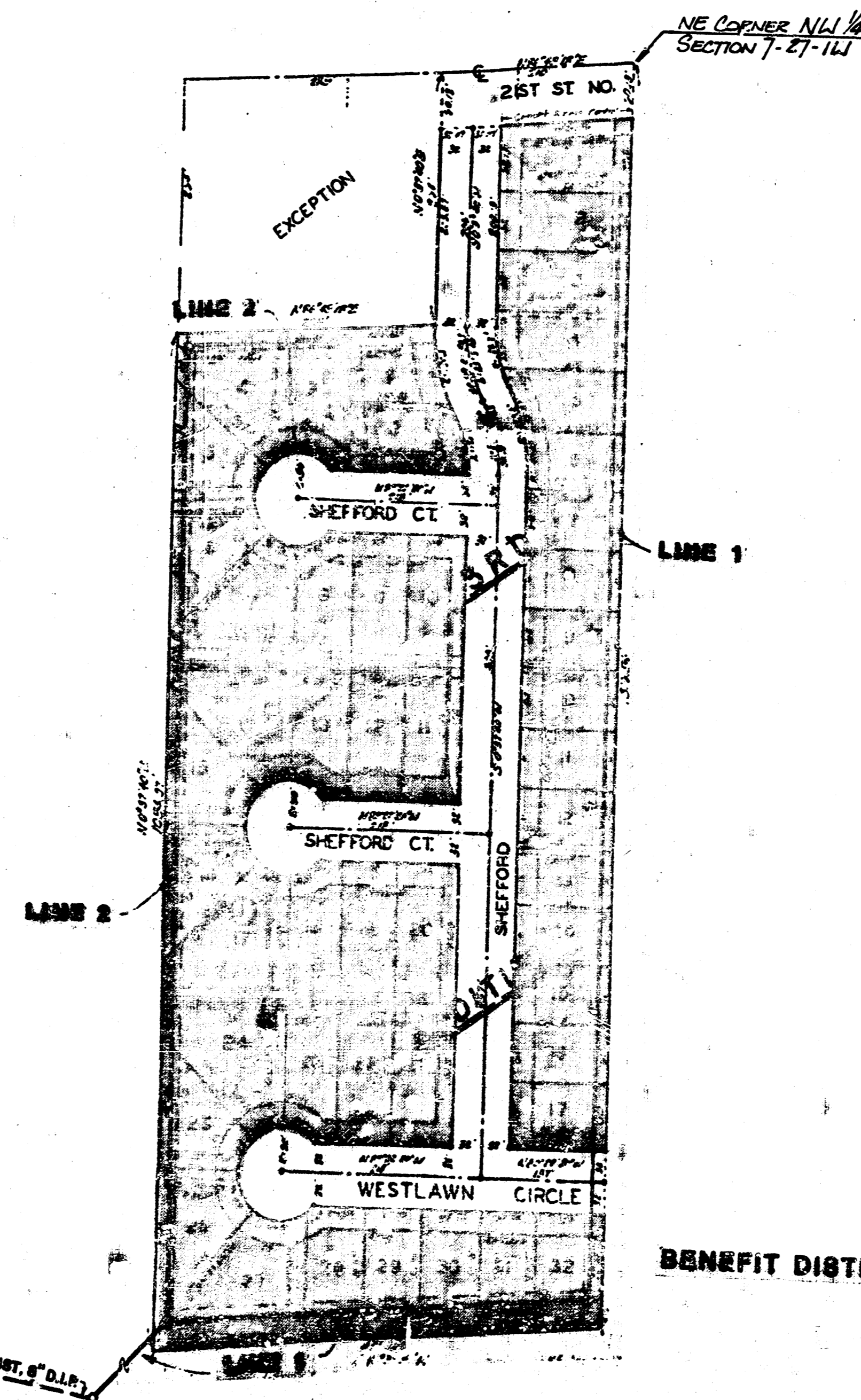
LATERAL 237, SWI TO SERVE ECK 3RD ADDITION

PROJECT NO.

468-76-245-81668-000-000-001



PROJECT LOCATION



CITY OF WICHITA, KS.
MICHAEL E. LINDEBAK CITY ENGINEER

GENERAL NOTES

1. The property owner is to clear or trim hedgerow to a minimum of 10 feet from the center line of the sanitary sewer. The work order for this project will not be issued until such trimming or clearing is completed.
2. The Contractor shall be responsible for preserving property irons. The Contractor will be required to re-establish any property irons which are disturbed by his construction operations. Such irons shall be re-established by a licensed land surveyor or professional engineer, in accordance with state laws.

AS BUILT
11-87
RDL

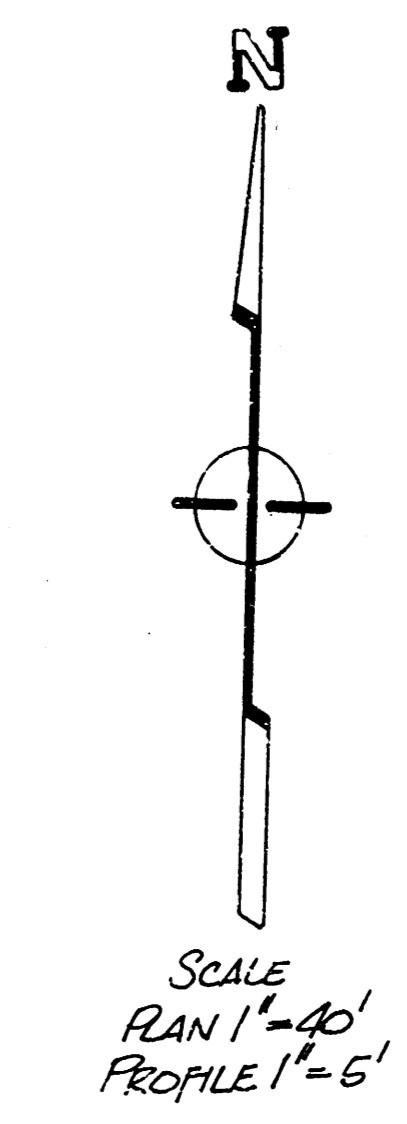
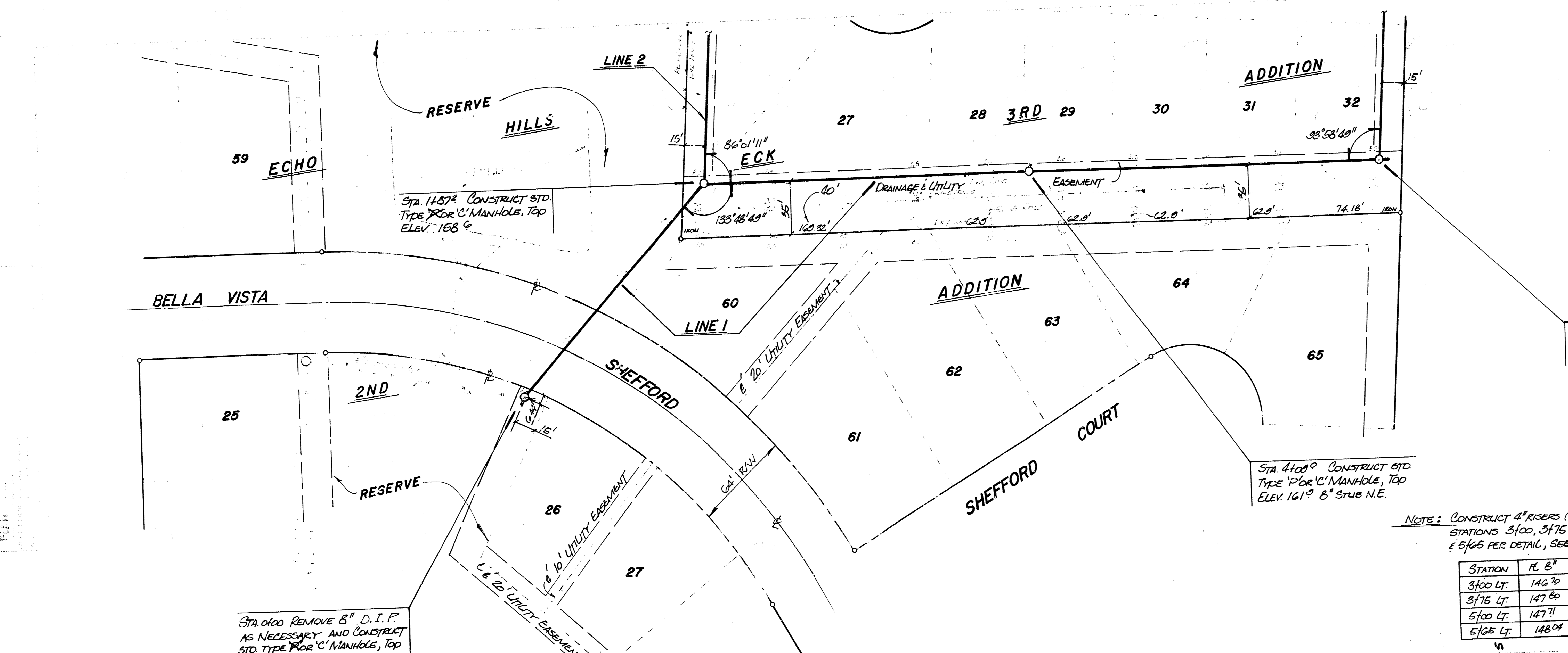
- BENCH MARKS**
1. City Plat, S.E. Corner of 119th St. West and 21st St. North. Elevation = 172.08
 2. Square Out in S.E. Corner of Concrete Box Culvert located 800 feet West of the Center Line of Shefford on 21st St. North. Elevation = 163.36
 3. Top of iron located in Trench at the E.E. Corner of the N.W. 1/4, Section 7-27-14. Elevation = 165.91
 4. Square Out in N.E. Corner of Concrete Box Culvert located 75 feet West and 20 feet South of the S.W. Corner of Eck 3rd Addition. Elevation = 160.28

- INDEX OF SHEETS**
- 1.....Title Sheet
 - 2 - 6.....Plan/Profiles
 - 7.....Type "P" Manhole Detail
 - 8.....Type "C" Manhole Detail
 - 9.....Riser Detail



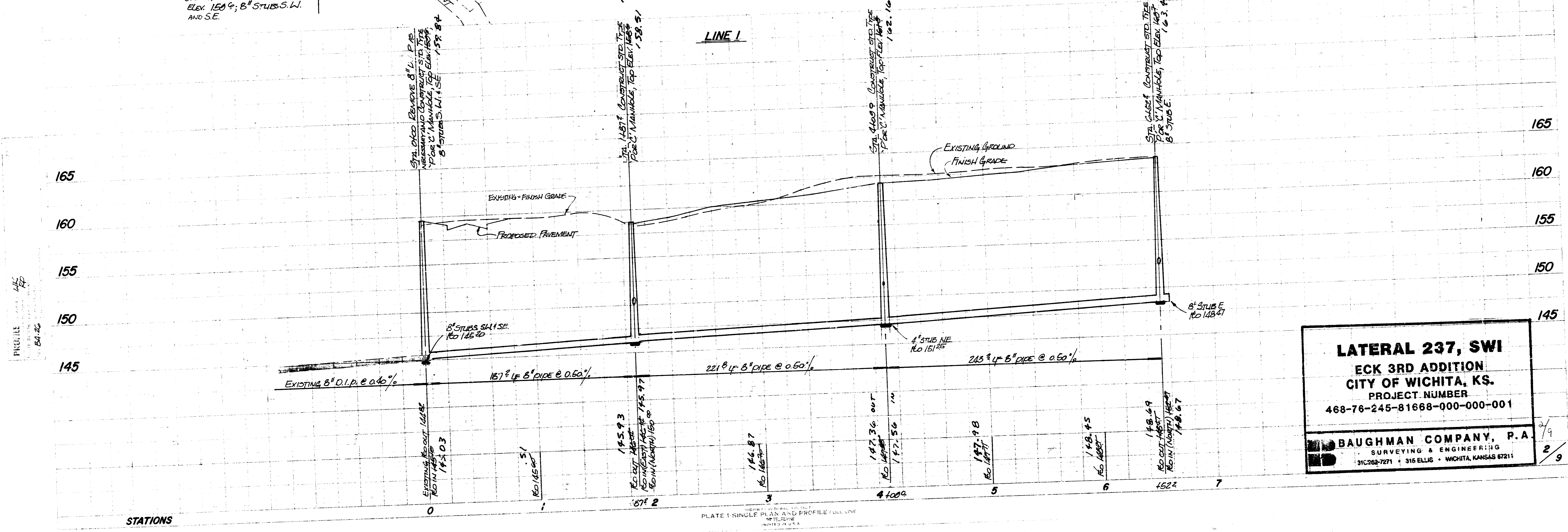
APRIL 2, 1987
BAUGHMAN COMPANY, P.A.
SURVEYING & ENGINEERING
315/282-7271 • 315 ELLIS WICHITA, KANSAS 67211

FILMED FROM THE BEST AVAILABLE COPY



- BENCH MARKS
- City Plat, S.E. Corner of 119th St. West and 21st St. North. Elevation = 172.08
 - Square Cut in S.E. Corner of Concrete Box Culvert located 800 feet West of the Center Line of Shefford on 21st St. North. Elevation = 163.36
 - Top of iron located in Thimble at the N.E. Corner of the N.W. 1/4, Section 7-27-1W. Elevation = 165.91
 - Square Cut in N.E. Corner of Concrete Box Culvert located 75 feet West and 20 feet South of the S.W. Corner of Eck 3rd Addition. Elevation = 160.28

STATION	R. 8"	TOP OF ROOF
3100 LT	146.70	160.5
3175 LT	147.80	152.5
5100 LT	147.71	163.0
5165 LT	148.08	163.0

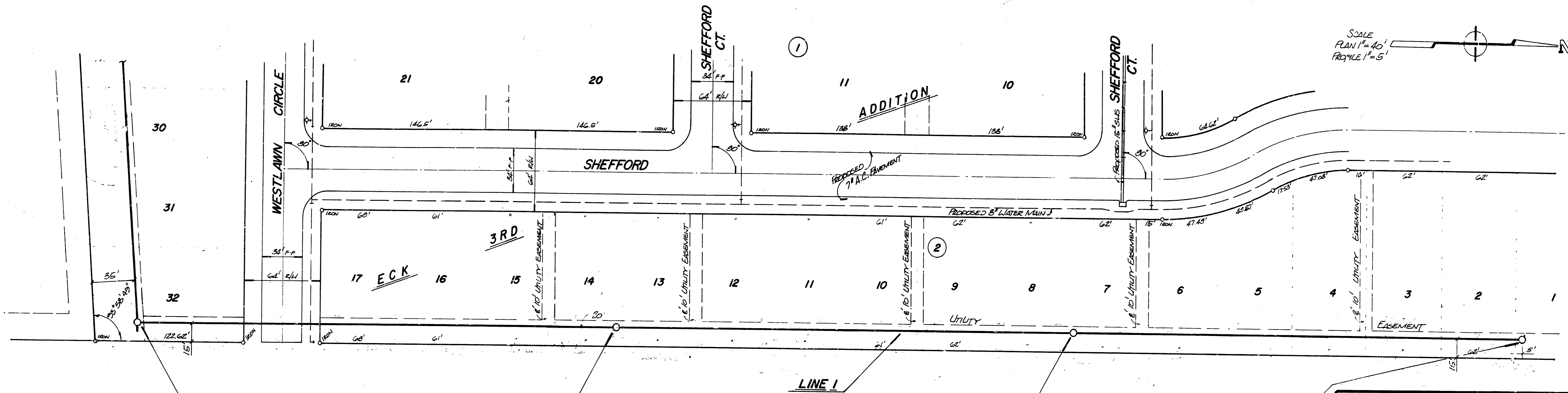


LATERAL 237, SWI
ECK 3RD ADDITION
CITY OF WICHITA, KS.
 PROJECT NUMBER
 468-76-245-81668-000-000-001

BAUGHMAN COMPANY, P.A.
 SURVEYING & ENGINEERING
 31028-7271 • 316 ELLIS • WICHITA, KANSAS 67211

2/9

FILMED FROM THE BEST AVAILABLE COPY....



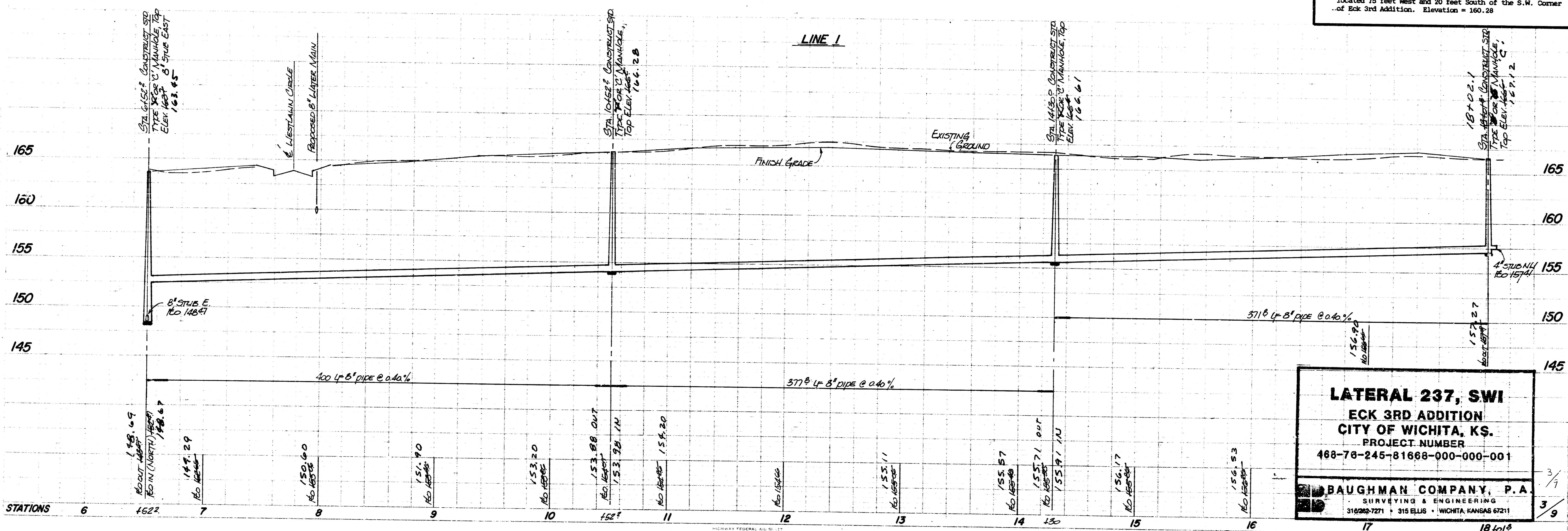
- BENCH MARKS**
1. City Disc, S.E. Corner of 119th St. West and 21st St. North, Elevation = 172.08
 2. Square Cut in S.E. Corner of Concrete Box Culvert located 800 feet West of the Center Line of Sheffield on 21st St. North. Elevation = 163.36
 3. Top of iron located in Thimble at the N.E. Corner of the N.W. 1/4, Section 7-27-3W. Elevation = 165.91
 4. Square Cut in N.E. Corner of Concrete Box Culvert located 75 feet West and 20 feet South of the S.W. Corner of Eck 3rd Addition. Elevation = 160.28

Sta. 6152.2 CONSTRUCT STD. TYPE 'P' OR 'C' MANHOLE, TOP ELEV. 162.7; 8" SUB E.

Sta. 10452.2 CONSTRUCT STD. TYPE 'P' OR 'C' MANHOLE, TOP ELEV. 166.2

Sta. 14430.0 CONSTRUCT STD. TYPE 'P' OR 'C' MANHOLE, TOP ELEV. 166.4

Sta. 18101.6 CONSTRUCT STD. TYPE 'P' OR 'C' MANHOLE, TOP ELEV. 166.9



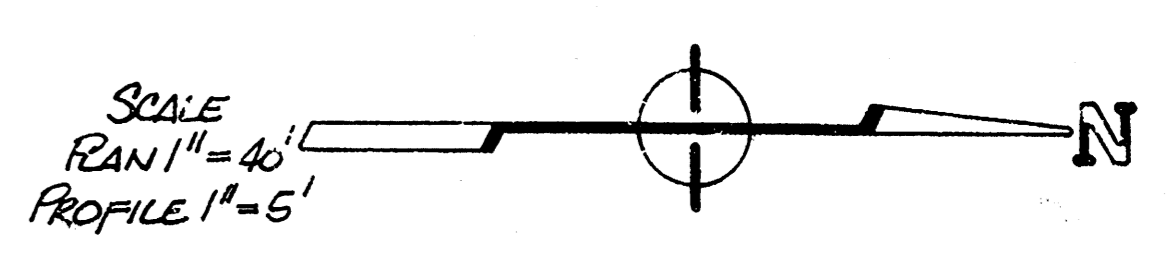
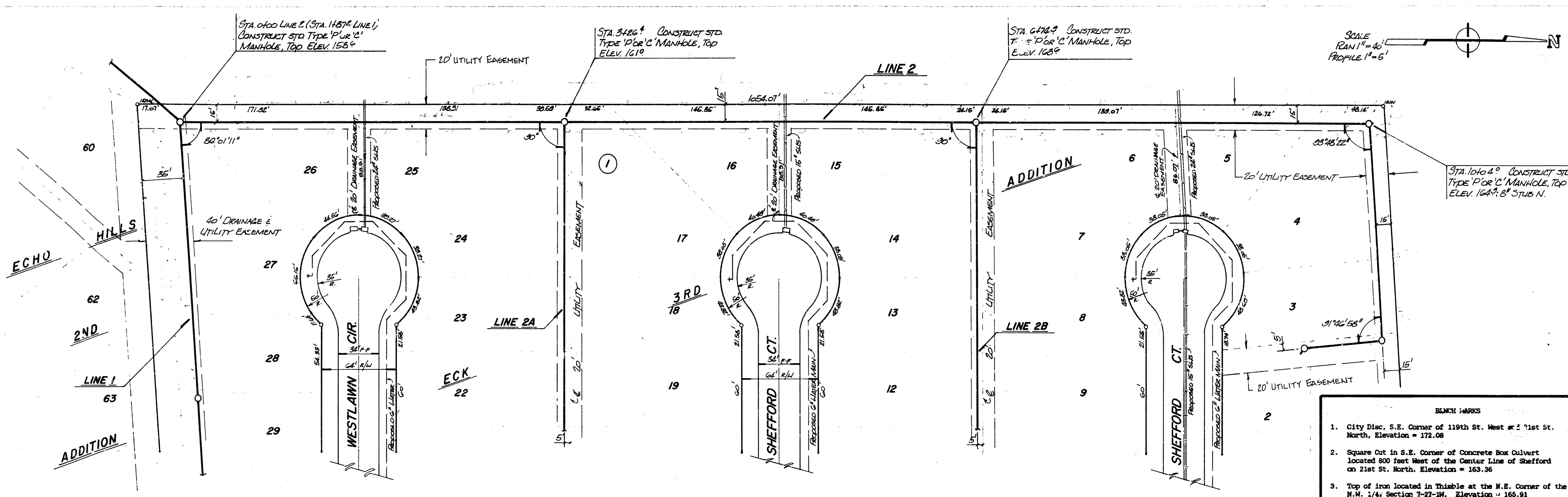
**LATERAL 237, SWI
ECK 3RD ADDITION
CITY OF WICHITA, KS.
PROJECT NUMBER
468-78-245-81668-000-000-001**

BAUGHMAN COMPANY, P.A.
SURVEYING & ENGINEERING
3102ND-7271 • 315 ELLIS • WICHITA, KANSAS 67211

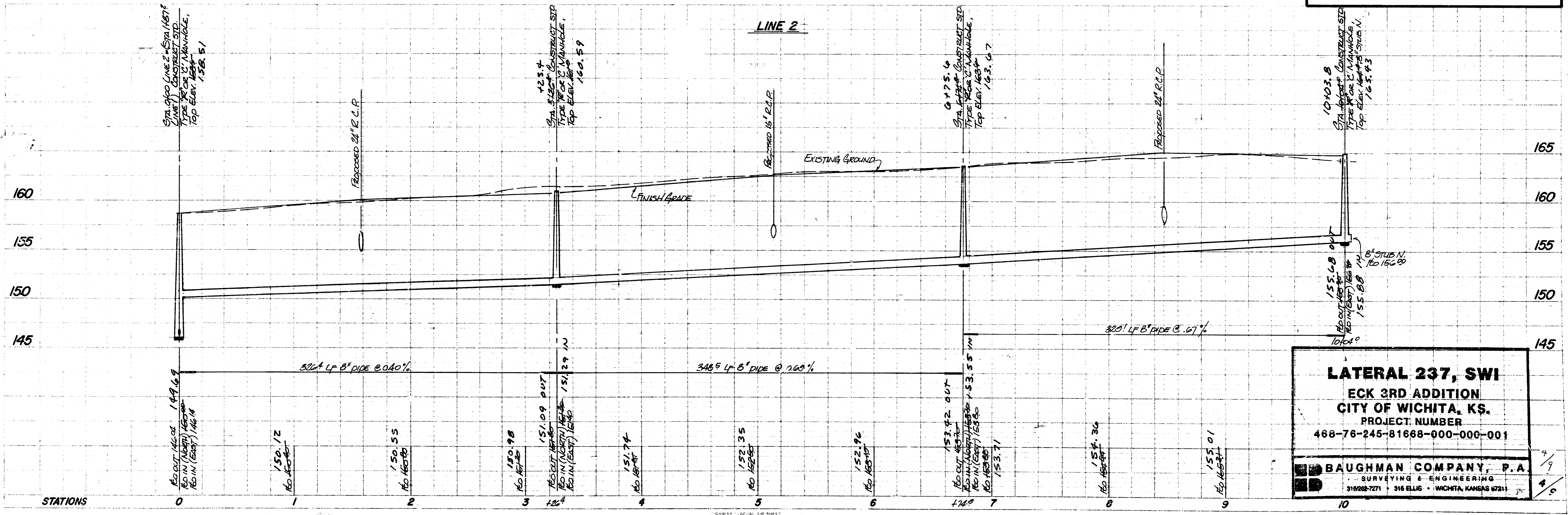
HOOPER FEDERAL 48 30 10
PLATE 1-SINGLE PLAN AND PROFILE FULL LINE
PRINTED IN U.S.A.

FILMED FROM THE BEST AVAILABLE COPY.....

PLAN



PROFILE



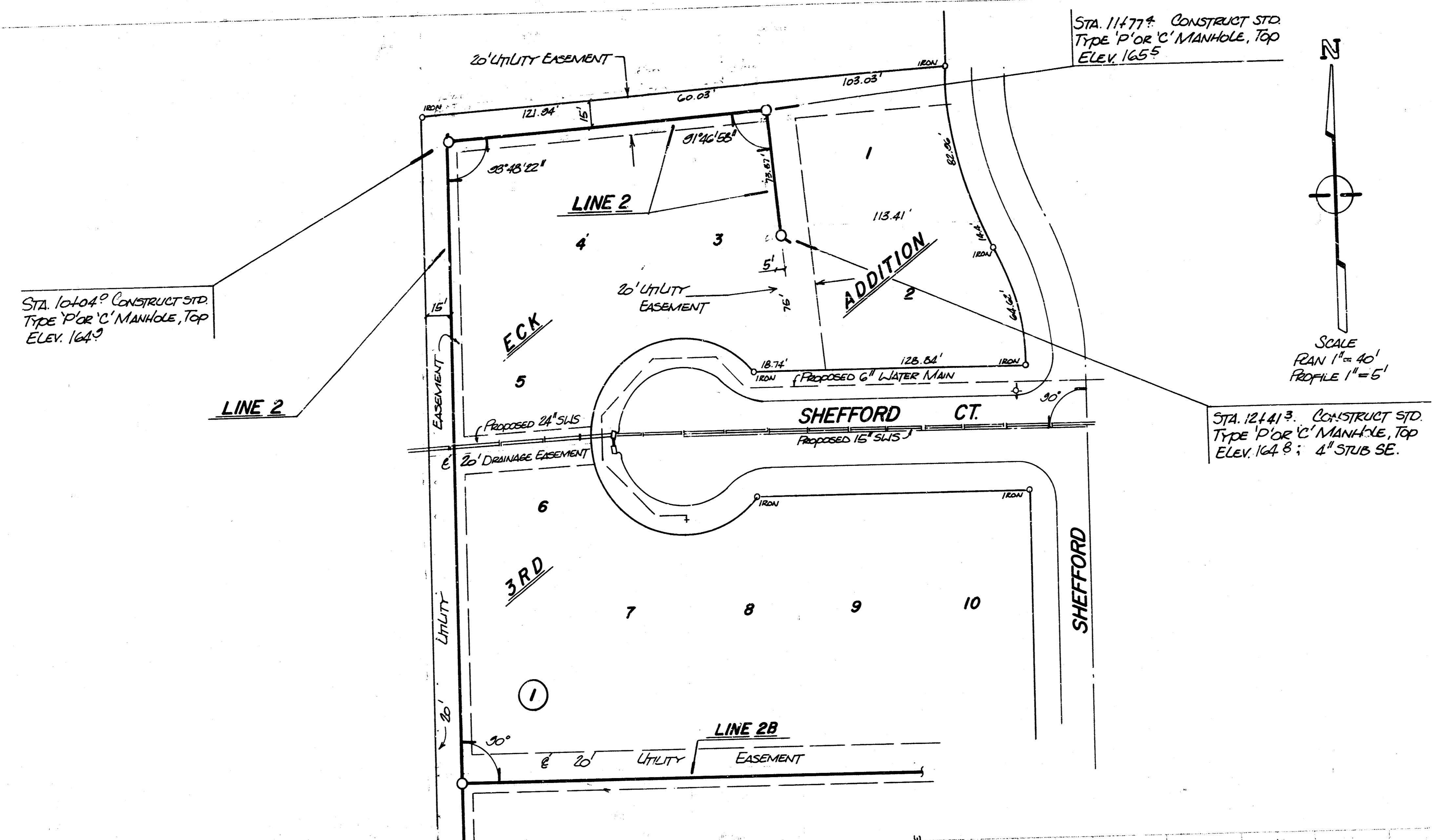
- BENCH MARKS
1. City Disc, S.E. Corner of 119th St. West & 21st St. North, Elevation = 172.08
 2. Square Out in S.E. Corner of Concrete Box Culvert located 800 feet West of the Center Line of Sheffield on 21st St. North. Elevation = 163.36
 3. Top of iron located in Thimble at the N.E. Corner of the N.W. 1/4, Section 7-27-1W. Elevation = 165.91
 4. Square Out in N.E. Corner of Concrete Box Culvert located 75 feet West and 20 feet South of the S.W. Corner of Eck 3rd Addition. Elevation = 160.28

LATERAL 237, SWI
ECK 3RD ADDITION
CITY OF WICHITA, KS.
 PROJECT NUMBER
 468-76-245-81688-000-001

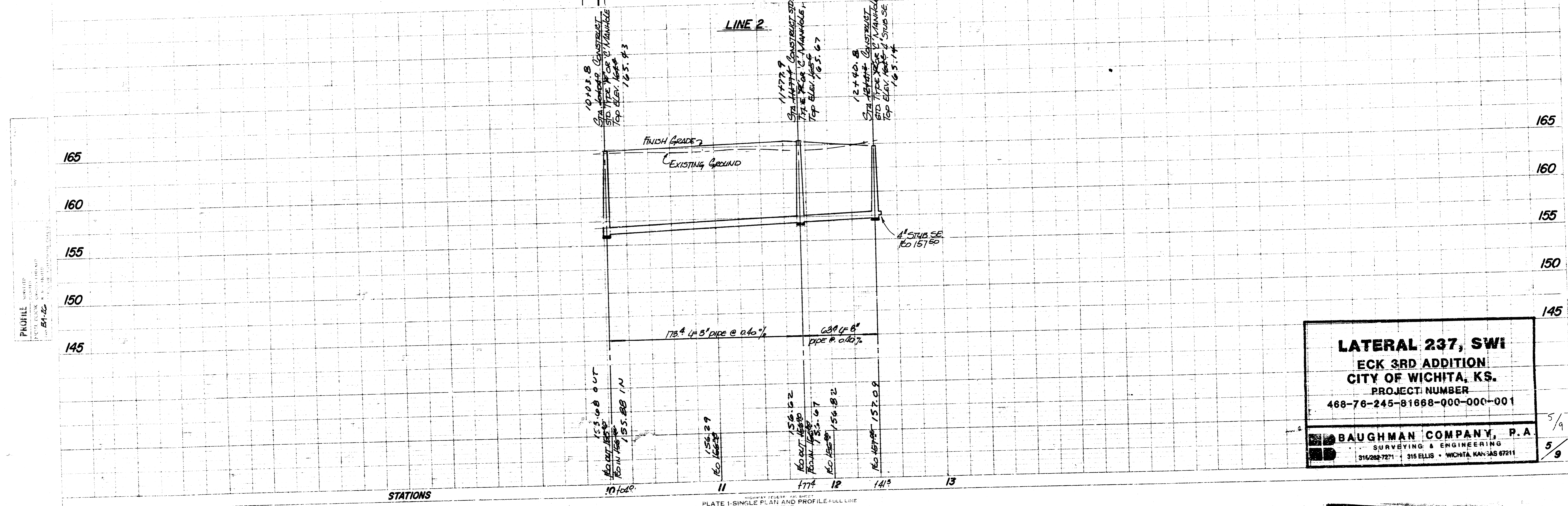
BAUGHMAN COMPANY, P.A.
 SURVEYING & ENGINEERING
 310208-7271 • 316 ELLIS • WICHITA, KANSAS 67211

FILMED FROM THE BEST AVAILABLE COPY....

PLAN



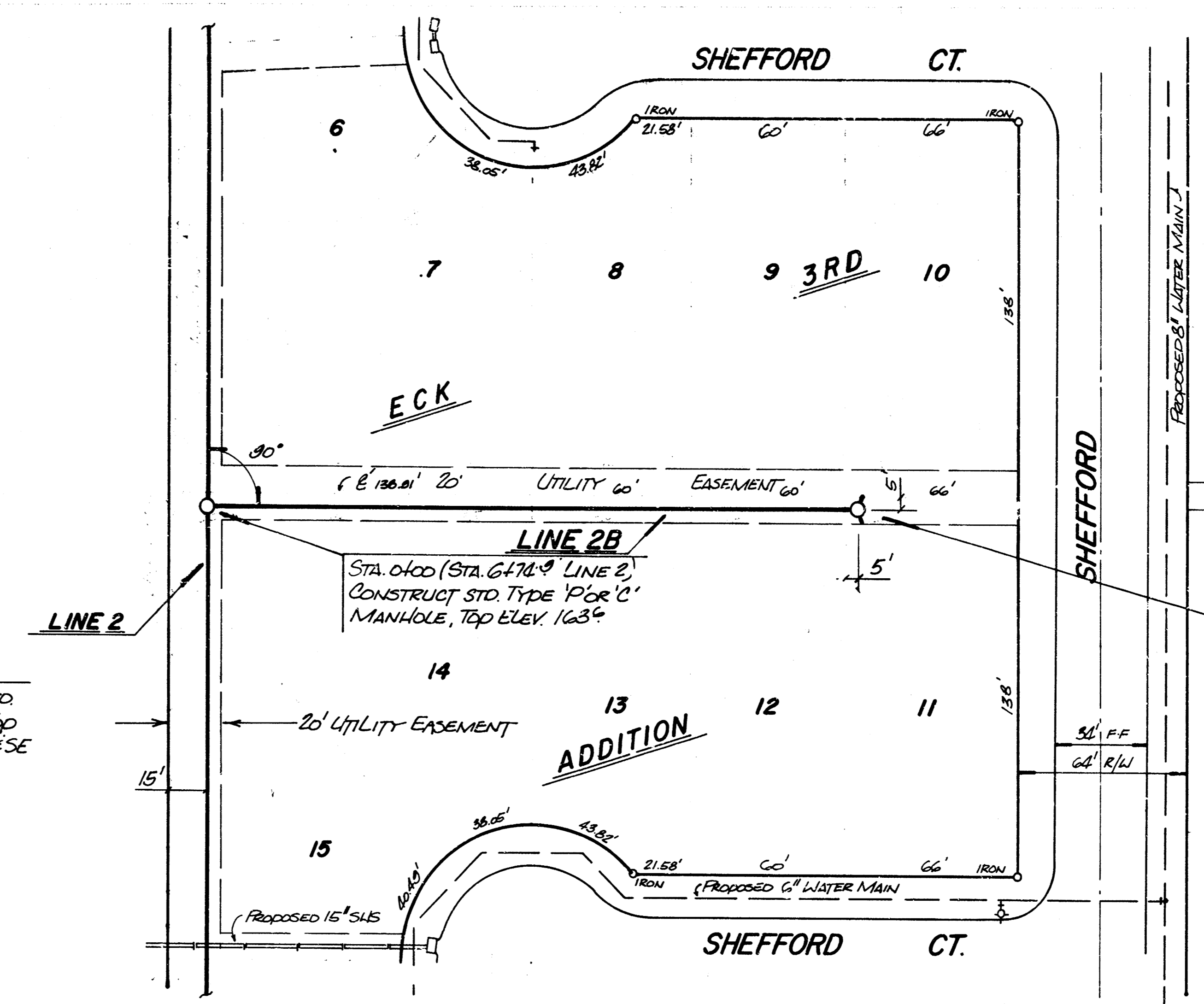
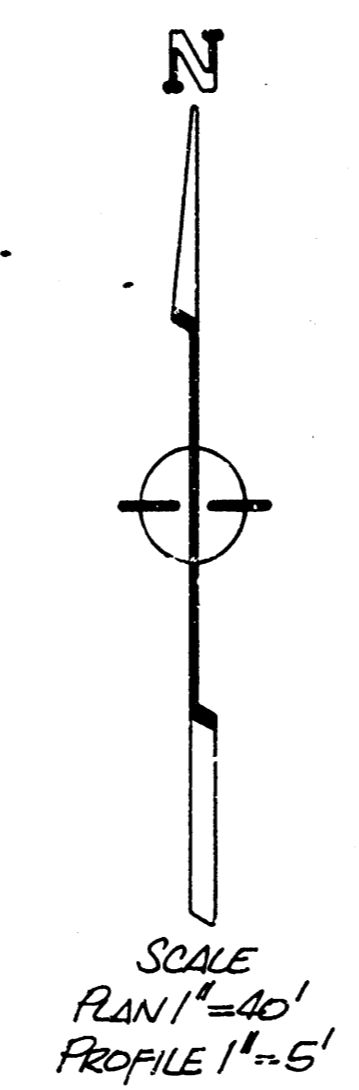
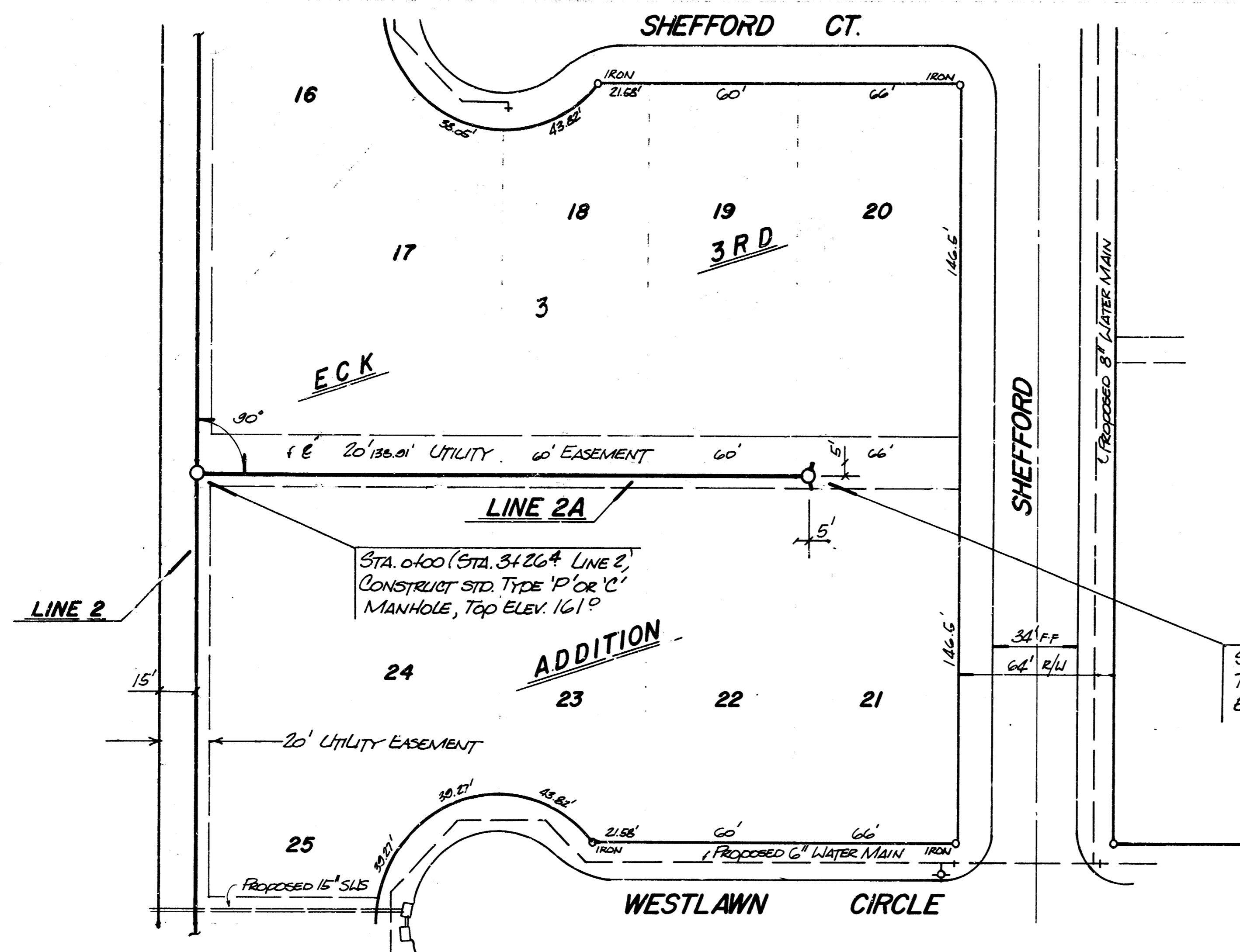
- BENCH MARKS
1. City Disc, S.E. Corner of 119th St. West and 21st St. North, Elevation = 172.08
 2. Square Out in S.E. Corner of Concrete Box Culvert located 800 feet West of the Center Line of Shefford on 21st St. North, Elevation = 163.36
 3. Top of Iron located in Thimble at the N.E. Corner of the N.W. 1/4, Section 7-27-1M, Elevation = 165.91
 4. Square Out in N.E. Corner of Concrete Box Culvert located 75 feet West and 20 feet South of the S.W. Corner of Eck 3rd Addition, Elevation = 160.28



LATERAL 237, SWI
ECK 3RD ADDITION
CITY OF WICHITA, KS.
 PROJECT NUMBER
 468-76-245-81688-000-000-001

BAUGHMAN COMPANY, P.A.
 SURVEYING & ENGINEERING
 316-282-7271 • 315 ELLIS • WICHITA, KAN. 67211

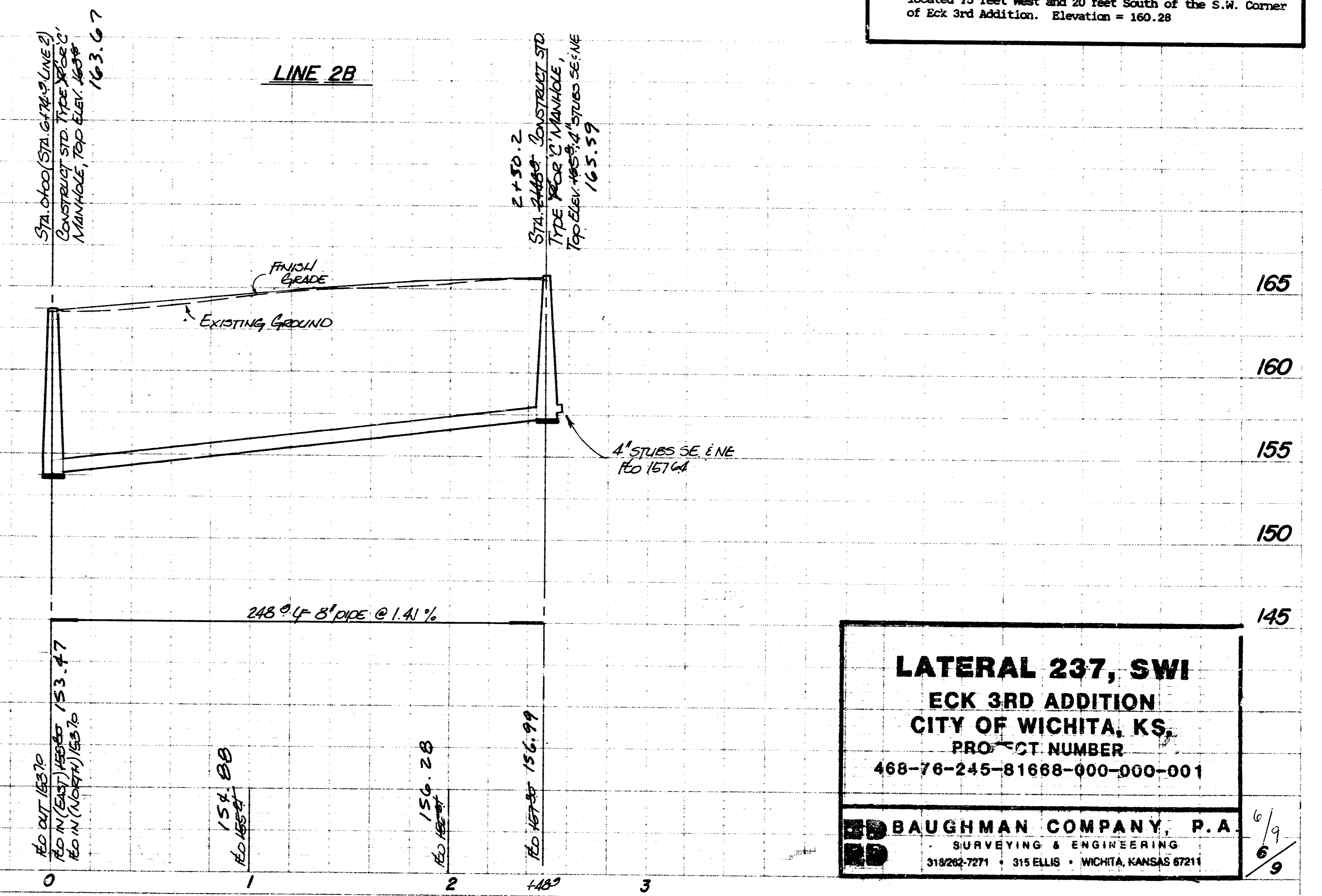
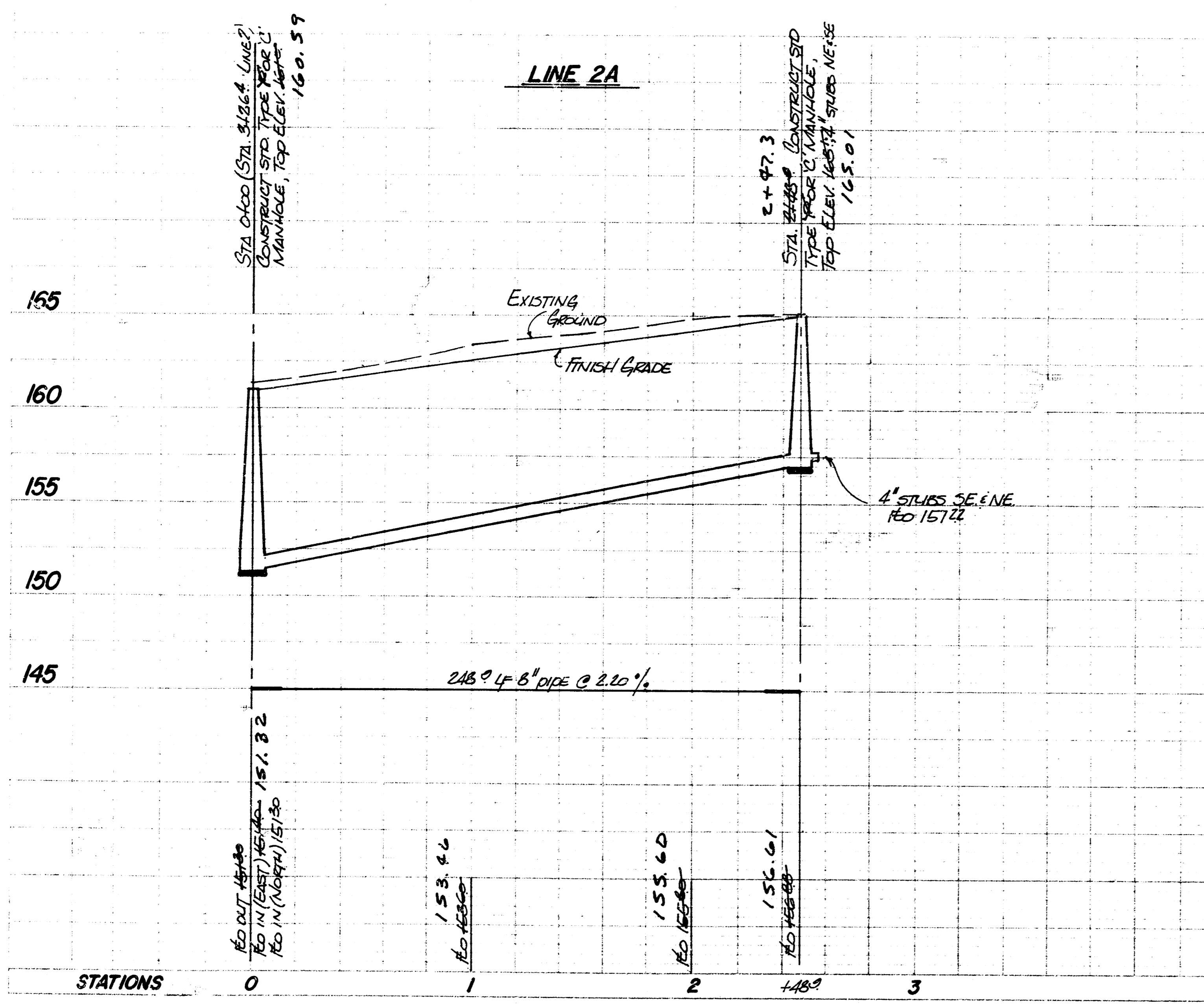
FILMED FROM THE BEST AVAILABLE COPY



STA 2448.0 CONSTRUCT STD TYPE 'P' OR 'C' MANHOLE, TOP ELEV. 165.14, 4' STUBS NE & SE

STA 2448.0 CONSTRUCT STD TYPE 'P' OR 'C' MANHOLE, TOP ELEV. 165.94, 4' STUBS NE & SE

- BENCH MARKS**
1. City Disc, S.E. Corner of 119th St. West and 21st St. North. Elevation = 172.08
 2. Square Out in S.E. Corner of Concrete Box Culvert located 800 feet West of the Center Line of Shefford on 21st St. North. Elevation = 163.36
 3. Top of iron located in Thimble at the N.E. Corner of the N.W. 1/4, Section 7-27-1W. Elevation = 165.91
 4. Square Out in N.E. Corner of Concrete Box Culvert located 75 feet West and 20 feet South of the S.W. Corner of Eck 3rd Addition. Elevation = 160.28



LATERAL 237, SWI
ECK 3RD ADDITION
CITY OF WICHITA, KS.
 PROJECT NUMBER
 468-76-245-81688-000-000-001

BAUGHMAN COMPANY, P.A.
 SURVEYING & ENGINEERING
 319262-7271 • 315 ELLIS • WICHITA, KANSAS 67211

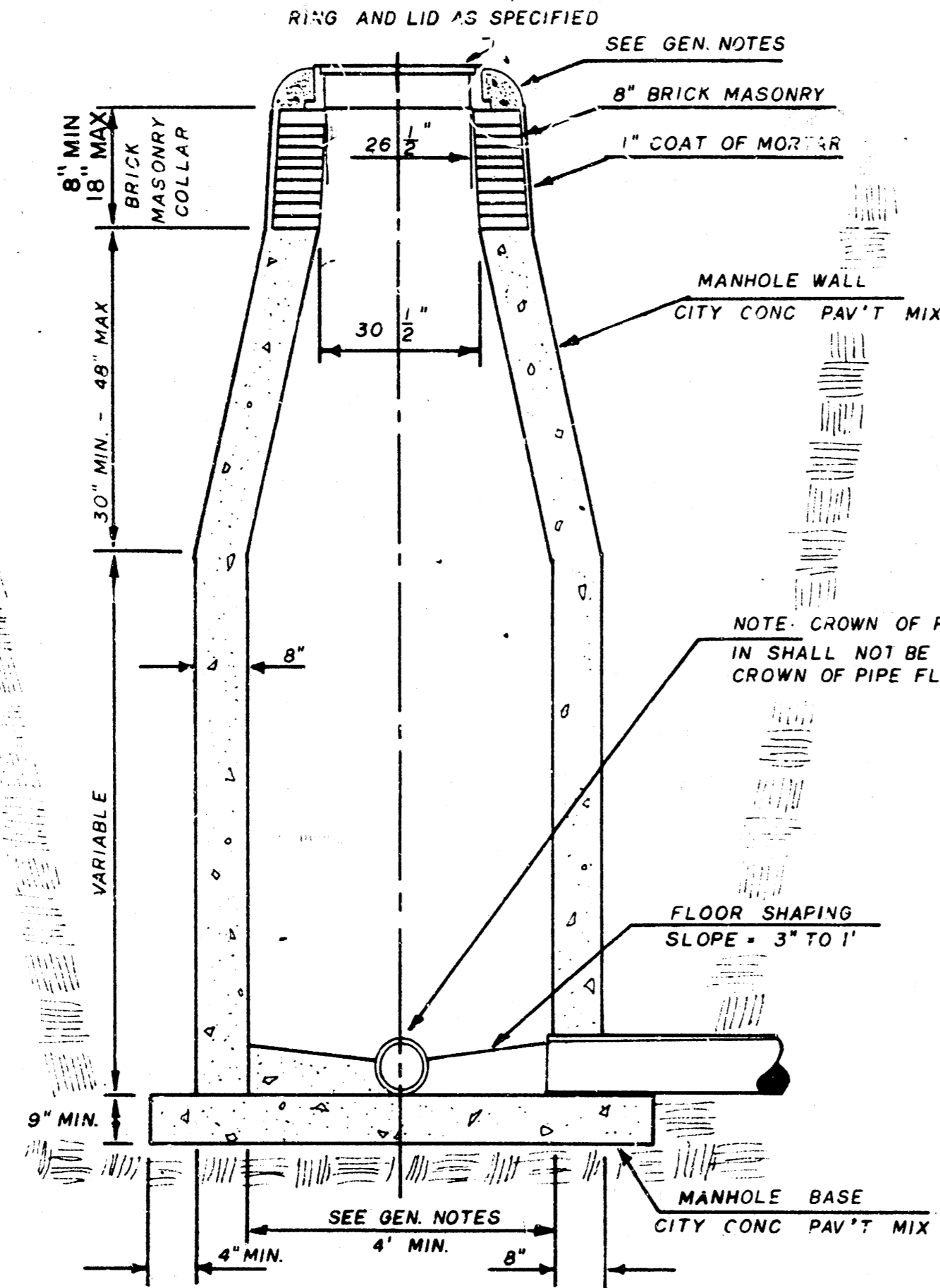
FILMED FROM THE BEST AVAILABLE COPY

SEWER APPURTENANCES DETAILS

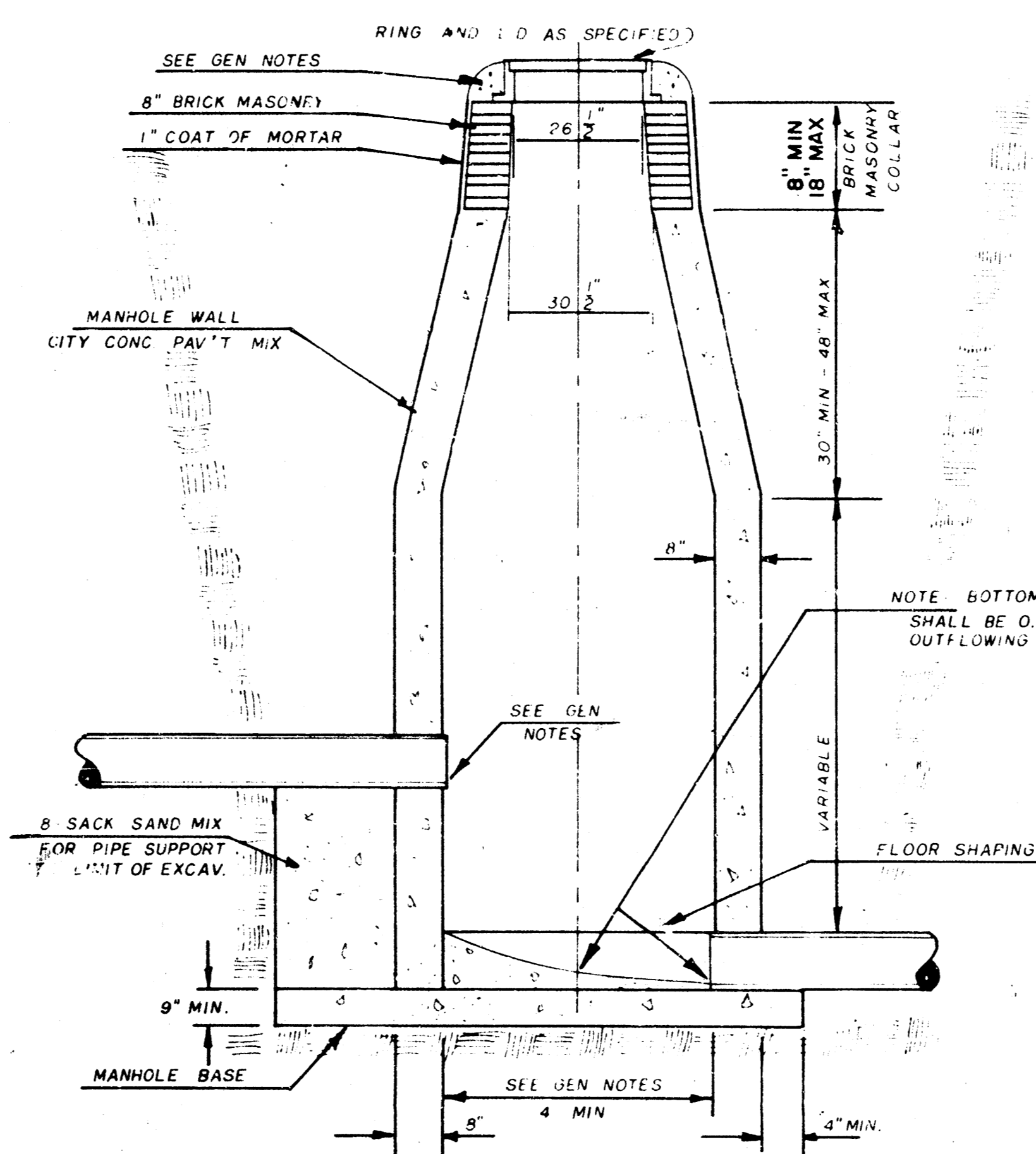
ADOPTED AS STANDARD DESIGN
BY

City of Wichita, Kansas

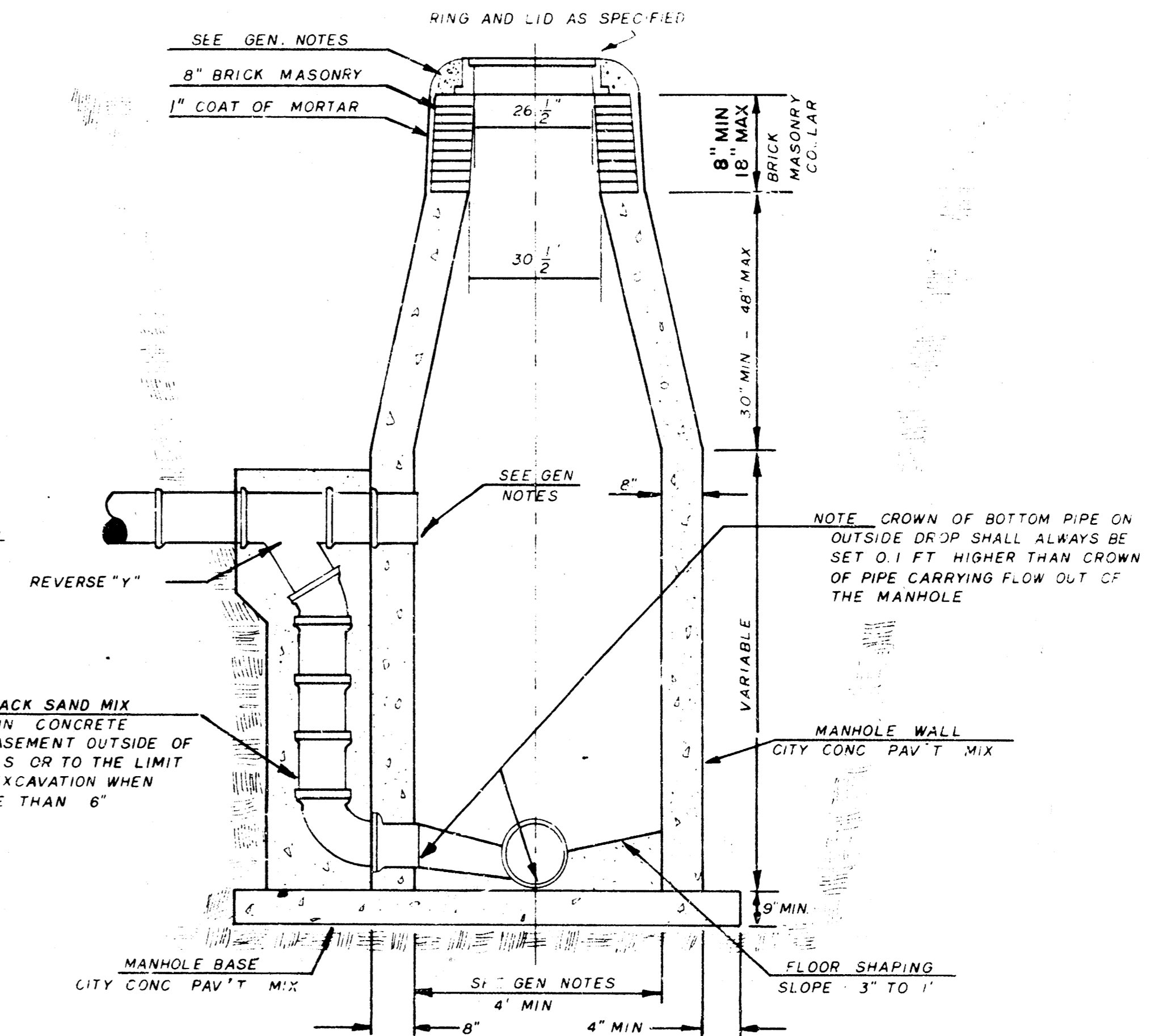
STANDARD MANHOLE TYPE "C"



INSIDE DROP MANHOLE TYPE "C"



OUTSIDE DROP MANHOLE TYPE "C"



GENERAL NOTES

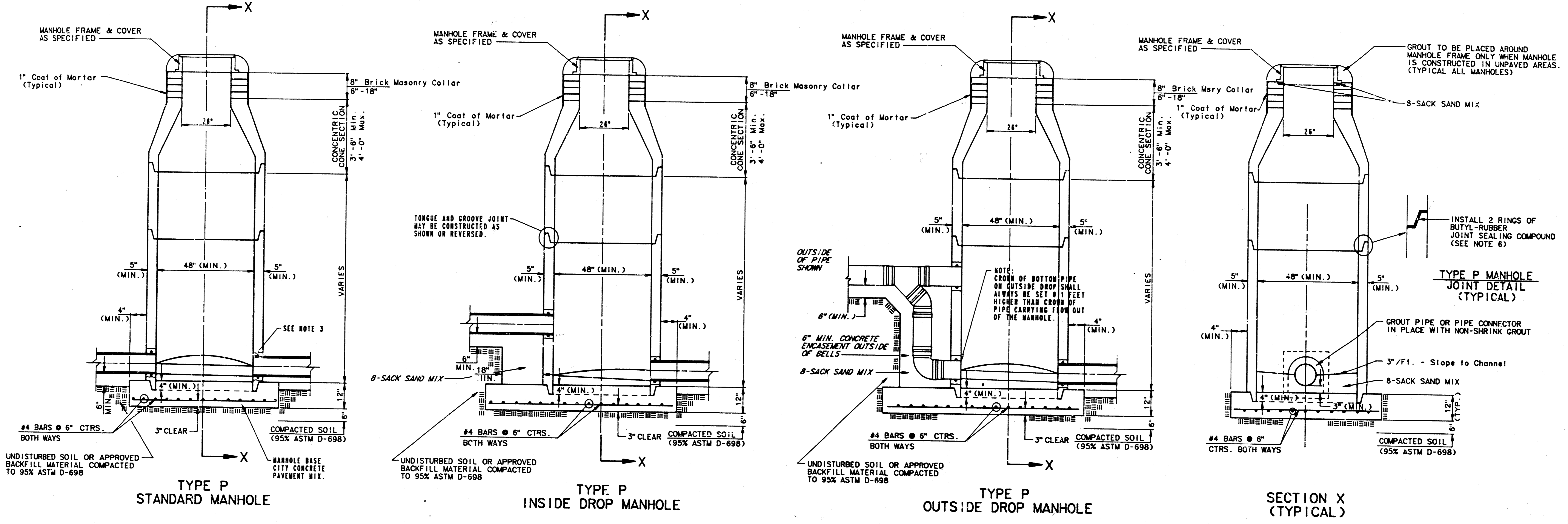
- MORTAR USED IN MASONRY CONSTRUCTION SHALL CONTAIN 8 SACKS OF CEMENT PER CUBIC YARD. CONCRETE USED IN MANHOLE WALLS AND BASES SHALL CONFORM TO THE REQUIREMENTS OF CONCRETE FOR CONCRETE PAVEMENT CONSTRUCTION AS SPECIFIED IN THE CITY STANDARD PAVING SPECIFICATIONS USING CITY CONCRETE PAVEMENT MIX WITHOUT AIR ENTRAINING ADMIXTURE. MORTAR SHALL BE PLACED AROUND THE MANHOLE RING AS SHOWN ON THE DRAWINGS WHEN MANHOLES ARE CONSTRUCTED IN UNPAVED AREAS. TYPE "C" MANHOLES CAN BE CONSTRUCTED ONLY WHERE PIPE SIZES ARE 8" OR SMALLER. THE INSIDE DIAMETER OF TYPE "C" MANHOLES SHALL BE 4". COMPLETED MANHOLE SHALL BE WITHOUT LEAKS AND WATER TIGHT.
- REINFORCING STEEL SHALL BE INSTALLED IN THE MANHOLE BASE. REINFORCING STEEL SHALL CONSIST OF NO. 4 BARS PLACED ON 6" CENTERS IN BOTH DIRECTIONS. REINFORCING STEEL SHALL BE PLACED 6" ABOVE THE BOTTOM OF THE MANHOLE BASE. COST OF FURNISHING AND INSTALLING REINFORCING STEEL SHALL BE INCLUDED IN THE UNIT PRICE BID FOR THE MANHOLE.
- AN OPENING SHALL BE CUT IN THE MANHOLE WALL FOR THE UPPER INLET PIPE FOR INSIDE AND OUTSIDE DROP MANHOLES. THE UPPER INLET PIPE SHALL BE GROUTED INTO THIS OPENING WITH NON-SHRINK GROUT. THE EXTERIOR OF THIS COMPLETED CONNECTION SHALL BE SEALED WITH AN APPROVED BITUMINOUS COATING SUCH THAT THE CONNECTION WILL BE WATER TIGHT.
- THE FLOORS OF ALL MANHOLES SHALL BE SHAPED WITH FLOW CHANNELS SUCH THAT THE MANHOLES WILL BE SELF-CLEANING AND FREE OF AREAS WHERE SOLIDS COULD BE DEPOSITED AS SEWAGE FLOWS THROUGH THE MANHOLE FROM ALL INLET PIPES TO THE OUTLET PIPE. FLOW CHANNELS SHALL BE FORMED TO MATCH THE BOTTOM HALVES OF THE INFLOWING PIPES AND THE OUTFLOWING PIPE AS SHOWN BY THE DRAWINGS EXCEPT FOR INSIDE DROP MANHOLES. FLOW CHANNELS FOR INSIDE DROP MANHOLES SHALL BE CONSTRUCTED AS INDICATED BY THE DRAWING. MANHOLE FLOORS SHALL HAVE SLOPES OF 3 INCHES PER FOOT IN THE AREAS OUTSIDE OF THE FLOW CHANNELS SLOPED TOWARD THE FLOW CHANNELS. PIPES LAID THROUGH MANHOLE SHALL HAVE THE TOP HALF REMOVED TO HEAT LINES FOR THE FULL INSIDE DIAMETER OF THE MANHOLE. MANHOLE FLOORS SHALL THEN BE SHAPED AROUND THE BOTTOM HALF OF THE PIPE WHICH FORMS THE FLOW CHANNEL.
- PIPES INSTALLED WITHIN THE EXCAVATION MADE FOR THE MANHOLE SHALL BE CRADLED WITH CONCRETE TO THE LIMITS OF THE MANHOLE EXCAVATION. WHEN CLAY PIPE IS USED, THE CRADLE SHALL EXTEND TO THE FIRST JOINT OUTSIDE THE MANHOLE. THE CRADLE SHALL BE TERMINATED AT THE CLAY PIPE JOINT IN A MANNER WHICH WILL MAINTAIN THE FLEXIBILITY OF THE JOINT. COST OF CRADLE WITHIN MANHOLE EXCAVATION OR TO CLAY PIPE JOINTS ADJACENT TO MANHOLE SHALL BE INCLUDED IN THE UNIT PRICE BID FOR THE MANHOLE.
- MANHOLE COVER CASTINGS AND MANHOLE FRAME CASTINGS SHALL CONFORM TO THE REQUIREMENTS AS INDICATED IN THE STANDARD SPECIFICATIONS AND AS SHOWN IN THE STANDARD DETAIL DRAWING.
- THE VERTICAL DROP IN INSIDE DROP MANHOLES SHALL NOT EXCEED 4" FOR INFLOWING PIPE SIZES 12" OR SMALLER AND 2" FOR INFLOWING PIPES LARGER THAN 12". THE CROWNS OF INFLOWING PIPES SHALL NEVER BE SET LOWER THAN THE CROWN OF THE OUTFLOWING PIPE.
- STANDARD MANHOLE TYPE "C" AND STANDARD INSIDE DROP MANHOLE TYPE "C" SHALL BE BID AS STANDARD MANHOLES FOR THE TYPE AND DIAMETER INDICATED. OUTSIDE DROP MANHOLE TYPE "C" SHALL BE BID AS STANDARD OUTSIDE DROP MANHOLE FOR THE TYPE AND DIAMETER INDICATED. ALL MANHOLE DIAMETERS WILL BE 4" UNLESS INDICATED OTHERWISE.

SEWER APPURTENANCES DETAILS

ADOPTED AS STANDARD DESIGN

BY

CITY OF WICHITA



- GENERAL NOTES**
- PRECAST MANHOLE NOTES**
1. ALL PRECAST CONCRETE MANHOLE SECTIONS SHALL CONFORM TO THE LATEST REVISION OF A.S.T.M. C478 AS MODIFIED BY THE SPECIFICATIONS.
 2. NON-SHRINK GROUT SHALL BE NON-METALLIC TYPE.
 3. APPROVED FLEXIBLE WATERSTOP GASKETS SHALL BE INSTALLED TO JOIN THE SEWER TO THE MANHOLE WALL WHEN A P.V.C. COMPOSITE PIPE OR P.V.C. PIPE IS USED. FOR OTHER TYPES OF PIPE THE SEWER SHALL BE GROUTED IN PLACE WITH NON-SHRINK GROUT. THE SEWER PIPE SHALL BE SUPPORTED WITH CONCRETE ENCASEMENT A MINIMUM OF 3 FEET FROM THE MANHOLE WALL AND TO THE FIRST JOINT FOR V.C.P. SUCH THAT THE JOINT REMAINS FLEXIBLE.
 4. ALL INSIDE SURFACES OF THE CONCRETE MANHOLE WHICH WOULD BE EXPOSED TO SEWER GAS SHALL BE COATED WITH 2 COATS THEWEC SERIES 60 HI-BUILD EPOXYLINE, DRY THICKNESS OF 8 MILS (MIN.)
 5. EXTERIOR MANHOLE WALLS SHALL BE COATED WITH 1 COAT MOBILARMA 633 BITUMINOUS COATING.
 6. JOINT SEALING COMPOUND SHALL BE KEIL SEAL NO. 2 OR APPROVED EQUAL.
 7. PRECAST MANHOLES SHALL BE SET AT LEAST 4 INCHES INTO THE MANHOLE BASE.
 8. TOP OF MANHOLE FLOOR SLAB SHALL BE AT LEAST 3 INCHES BELOW THE FLOW LINE OF THE OUTLET PIPE TO INSURE SUFFICIENT MINIMUM THICKNESS OF SHAPED INVERT.
 9. LIFTING HOLES SHALL BE FILLED WITH NON-SHRINK GROUT AND THE INTERIOR SURFACE COATED AS SPECIFIED.
 10. MORTAR USED IN MASONRY CONSTRUCTION SHALL CONTAIN 8 SACKS OF CEMENT PER CUBIC YARD. CONCRETE USED IN MANHOLE BASES SHALL CONFORM TO THE REQUIREMENTS OF CONCRETE FOR CONCRETE PAVEMENT CONSTRUCTION AS SPECIFIED IN THE CITY STANDARD PAVING SPECIFICATIONS USING CITY CONCRETE PAVEMENT MIX WITHOUT AIR ENTRAINING ADMIXTURE. MORTAR SHALL BE PLACED AROUND THE MANHOLE RING AS SHOWN ON THE DRAWINGS WHEN MANHOLES ARE CONSTRUCTED IN UNPAVED AREAS. MANHOLES CONSTRUCTED WHERE PIPE SIZES ARE SMALLER THAN 24" SHALL HAVE AN INSIDE DIAMETER OF 4". MANHOLES CONSTRUCTED WHERE PIPE SIZES ARE 24" OR LARGER SHALL HAVE AN INSIDE DIAMETER OF 5". COMPLETED MANHOLE SHALL BE WITHOUT LEAKS AND WATER TIGHT.
 11. REINFORCING STEEL SHALL BE INSTALLED IN THE MANHOLE BASES AND SHALL CONSIST OF NO. 4 BARS PLACED ON 6" CENTERS IN BOTH DIRECTIONS. THE MANHOLE BASE REINFORCEMENT SHALL BE PLACED AT LEAST 3" ABOVE THE BOTTOM OF THE MANHOLE BASE. ALL COSTS FOR FURNISHING AND INSTALLING REINFORCING STEEL SHALL BE INCLUDED IN THE UNIT PRICE BID FOR THE MANHOLE.
 12. OPENINGS SHALL BE CUT INTO THE MANHOLE WALL WHEN OUTSIDE DROPS ARE CONSTRUCTED ON EXISTING MANHOLES. SUCH OPENINGS CUT INTO EXISTING MANHOLES SHALL BE AS SMALL AS PRACTICAL TO FACILITATE INSTALLING AND GROUTING THE NEW PIPE IN PLACE. WATERSTOP GASKETS SHALL BE USED WITH P.V.C. AND A.P.S. COMPOSITE PIPE. THE NEW PIPE SHALL BE GROUTED INTO THE OPENING USING AN APPROVED NONSHRINK GROUT FOR THE FULL MANHOLE WALL THICKNESS. THE EXTERIOR OF THE COMPLETED CONNECTION SHALL BE SEALED WITH AN APPROVED BITUMINOUS COATING SUCH THAT THE CONNECTION WILL BE WATER TIGHT. FLOOR OF MANHOLE SHALL BE MODIFIED TO FORM NEW FLOW CHANNEL FOR THE NEW CONNECTION AS INDICATED BY THE DRAWING. THIS WORK, INCLUDING MODIFICATION OF MANHOLE FLOOR, SHALL BE PAID FOR AT THE UNIT PRICE BID FOR OUTSIDE DROP STACK CONSTRUCTED ON EXISTING MANHOLE.
 13. THE FLOORS OF ALL MANHOLES SHALL BE SHAPED WITH FLOW CHANNELS SUCH THAT THE MANHOLES WILL BE SELF CLEANING AND FREE OF AREAS WHERE SOLIDS COULD BE DEPOSITED AS SEWAGE FLOWS THROUGH THE MANHOLE FROM ALL INLET PIPES TO THE OUTLET PIPE. FLOW CHANNELS SHALL BE FORMED TO MATCH THE BOTTOM HALVES OF THE INFLOWING PIPES AND THE OUTFLOWING PIPE AS SHOWN BY THE DRAWINGS EXCEPT FOR INSIDE DROP MANHOLES. FLOW CHANNELS FOR INSIDE DROP MANHOLES SHALL BE CONSTRUCTED AS INDICATED BY THE DRAWING. MANHOLE FLOORS SHALL HAVE SLOPES OF 3 INCHES PER FOOT IN THE AREAS OUTSIDE OF THE FLOW CHANNELS SLOPED TOWARD THE FLOW CHANNELS. PIPES LAID THROUGH MANHOLES SHALL HAVE THE TOP HALF REMOVED TO REAT LINES FOR THE FULL INSIDE DIAMETER OF THE MANHOLE. MANHOLE FLOORS SHALL THEN BE SHAPED AROUND THE BOTTOM HALF OF THE PIPE WHICH FORMS THE FLOW CHANNEL.
 14. PIPES INSTALLED WITHIN THE EXCAVATION MADE FOR THE MANHOLE SHALL BE CRADLED WITH CONCRETE TO THE LIMITS OF THE MANHOLE EXCAVATION. WHEN CLAY PIPE IS USED, THE CRADLE SHALL EXTEND TO THE FIRST JOINT OUTSIDE THE MANHOLE. THE CRADLE SHALL BE TERMINATED AT THE CLAY PIPE JOINT IN A MANNER WHICH WILL MAINTAIN THE FLEXIBILITY OF THE JOINT. COST OF CRADLE WITHIN MANHOLE EXCAVATION OR TO CLAY PIPE JOINTS ADJACENT TO MANHOLE SHALL BE INCLUDED IN THE UNIT PRICE BID FOR THE MANHOLE.
 15. MANHOLE COVER CASTINGS AND MANHOLE FRAME CASTINGS SHALL CONFORM TO THE REQUIREMENTS AS INDICATED IN THE STANDARD SPECIFICATIONS AND AS SHOWN IN THE STANDARD DETAIL DRAWING.
 16. THE VERTICAL DROP IN INSIDE DROP MANHOLES SHALL NOT EXCEED 4' FOR INFLOWING PIPES SIZED 12" OR SMALLER AND 2' FOR INFLOWING PIPES LARGER THAN 12". THE CROWNS OF INFLOWING PIPES SHALL NEVER BE SET LOWER THAN THE CROWN OF THE OUTFLOWING PIPE.
 17. STANDARD MANHOLES AND STANDARD INSIDE DROP MANHOLES SHALL BE BID AS STANDARD MANHOLES FOR THE TYPE AND DIAMETER INDICATED. OUTSIDE DROP MANHOLES SHALL BE BID AS STANDARD OUTSIDE DROP MANHOLES FOR THE TYPE AND DIAMETER INDICATED. ALL MANHOLE DIAMETERS WILL BE 4' UNLESS INDICATED OTHERWISE.
 18. A BRICK MASONRY COLLAR SHALL BE INSTALLED BETWEEN THE CAST IRON FRAME AND THE CONCENTRIC CONE. THE COLLAR WILL HAVE 8" WALLS AND A VERTICAL HEIGHT OF 8" MINIMUM AND 18" MAXIMUM. A 1" COAT OF MORTAR WILL BE PLASTERED ON THE OUTSIDE OF THE COLLAR.

FILMED FROM THE BEST AVAILABLE COPY

VERTICAL RISER DETAIL

ADOPTED AS STANDARD DESIGN BY

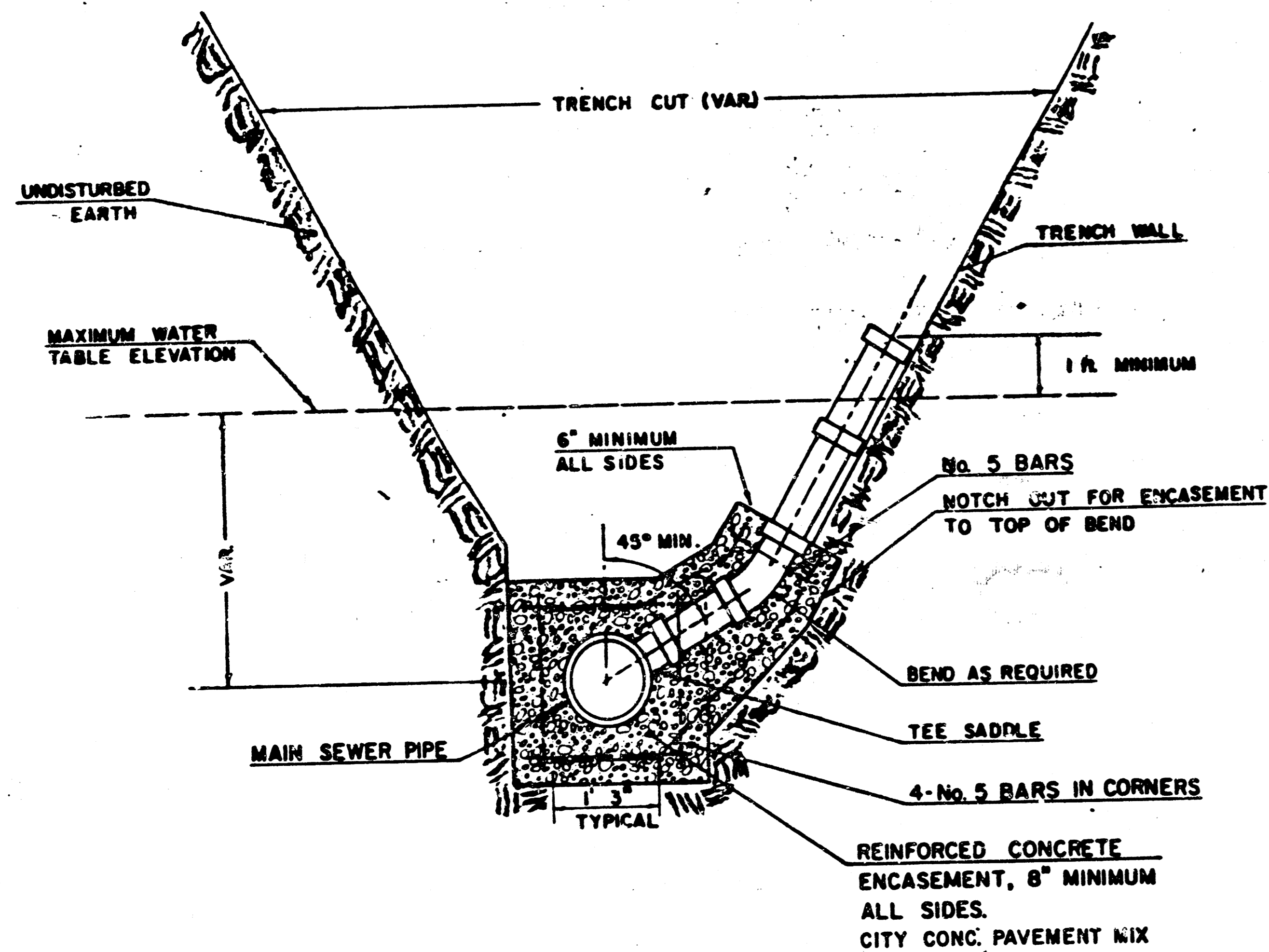
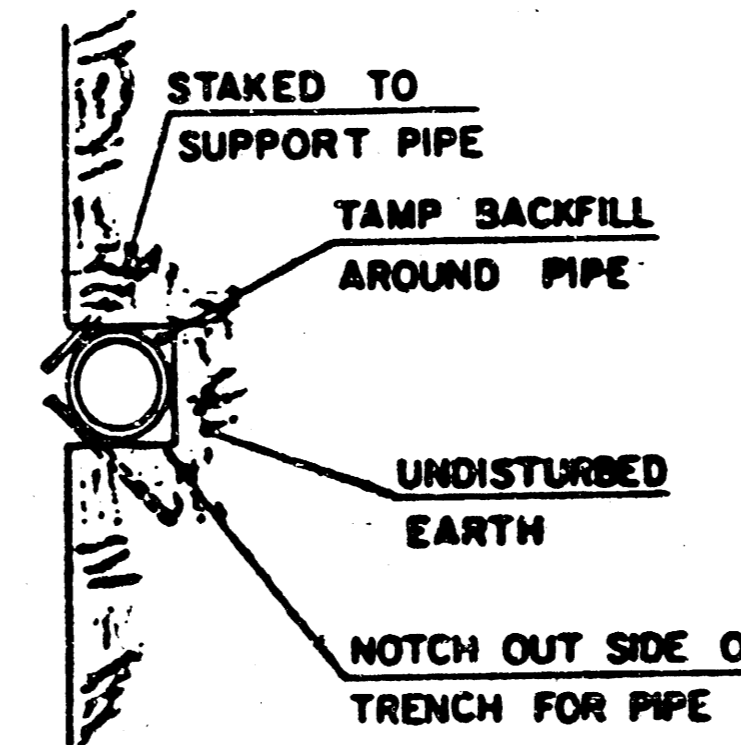
CITY OF WICHITA, KANSAS

GENERAL NOTE

RISERS SHALL BE INSTALLED TO SERVE ALL LOTS OR TRACTS WHEN THE MAIN SEWER LINE IS BELOW THE WATER TABLE. RISERS SHALL ALSO BE INSTALLED TO SERVE ALL LOTS AND TRACTS WHEN THE MAIN SEWER LINE DEPTH IS SUCH THAT WOULD MAKE THE BUILDING SEWER LINE CONNECTION DIFFICULT. INSTALLATION OF RISERS BECAUSE OF MAIN LINE SEWER DEPTH SHALL BE AS APPROVED BY THE ENGINEER. THE LOCATION OF RISERS TO SERVE DEVELOPED PROPERTY SHALL BE APPROVED BY THE PROPERTY OWNER. PIPE STUBS SHALL BE INSTALLED IN MANHOLES WHERE LOCATIONS OF MANHOLES WILL PROVIDE SATISFACTORY SERVICE CONNECTIONS AS DETERMINED BY THE FIELD ENGINEER. THE VERTICAL DISTANCE BETWEEN THE FLOW LINE OF THE MANHOLE PIPE STUB AND THE FLOW LINE OF THE MAIN SEWER LINE SHALL NOT EXCEED 4 FT. MANHOLE PIPE STUBS SHALL NOT BE SET BELOW AN ELEVATION WHICH WILL PERMIT THE TOP OF THE INSIDE OF THE STUB TO EXCEED THE TOP OF THE INSIDE OF THE MAIN SEWER PIPE. PIPE STUBS AND RISERS INSTALLED TO SERVE COMMERCIAL OR INDUSTRIAL PROPERTY SHALL BE 6 INCH. PIPE STUBS AND RISERS INSTALLED TO SERVE RESIDENTIAL PROPERTY MAY BE EITHER 6 INCH OR 4 INCH DEPENDING UPON THE AVAILABLE GRADE AND THE SIZE OF THE LOT AS DETERMINED BY THE FIELD ENGINEER. ENCASUREMENT OF VITRIFIED CLAY MAIN SEWER PIPE SHALL EXTEND TO THE FIRST JOINT IN THE MAIN SEWER CLAY PIPE ON EACH SIDE OF THE RISER INSTALLATION. ENCASUREMENT OF A.S.S. COMPOSITE OR P.V.C. MAIN SEWER PIPE SHALL EXTEND A MINIMUM OF 3 FT. ON BOTH SIDES OF THE CENTERLINE OF THE RISER. FOUR INCH AND SIX INCH RISER PIPE SHALL BE ENCASED WITH CONCRETE TO THE TOP OF THE BEND AS INDICATED IN THE DRAWINGS. FOUR INCH AND SIX INCH CLAY PIPE USED FOR RISERS SHALL BE EXTRA STRENGTH PIPE CONFORMING TO THE REQUIREMENTS OF THE LATEST EDITION OF A.S.T.M. DESIGNATION C700 WITH COMPRESSIVE JOINTS AS SPECIFIED FOR CLAY PIPE IN THE STANDARD SPECIFICATIONS. FOUR INCH AND SIX INCH A.S.S. OR P.V.C. PIPE SHALL BE PIPE APPROVED FOR USE IN THE CITY BY THE CHIEF ENGINEER AND THE DEPARTMENT OF HOUSING AND ECONOMIC DEVELOPMENT. LOCATIONS OF THE ENDS OF THE RISERS SHALL BE MARKED BY PASTING GREEN COLORED PLASTIC TAPE TO THE END OF THE RISER WHICH SHALL BE EXTENDED TO THE GROUND SURFACE AS THE EXCAVATION IS BACKFILLED SUCH THAT THE COLORED TAPE WILL BE VISIBLE WHEN THE PROJECT IS COMPLETED. THE ENDS OF THE RISER PIPE AND MANHOLE STUBS SHALL BE CAPPED OR PLUGGED USING FITTINGS FURNISHED BY THE MANUFACTURER OF THE PIPE. CONTRACTOR'S METHODS FOR SUPPORTING AND BACKFILLING RISER PIPE SHALL BE APPROVED BY THE ENGINEER.

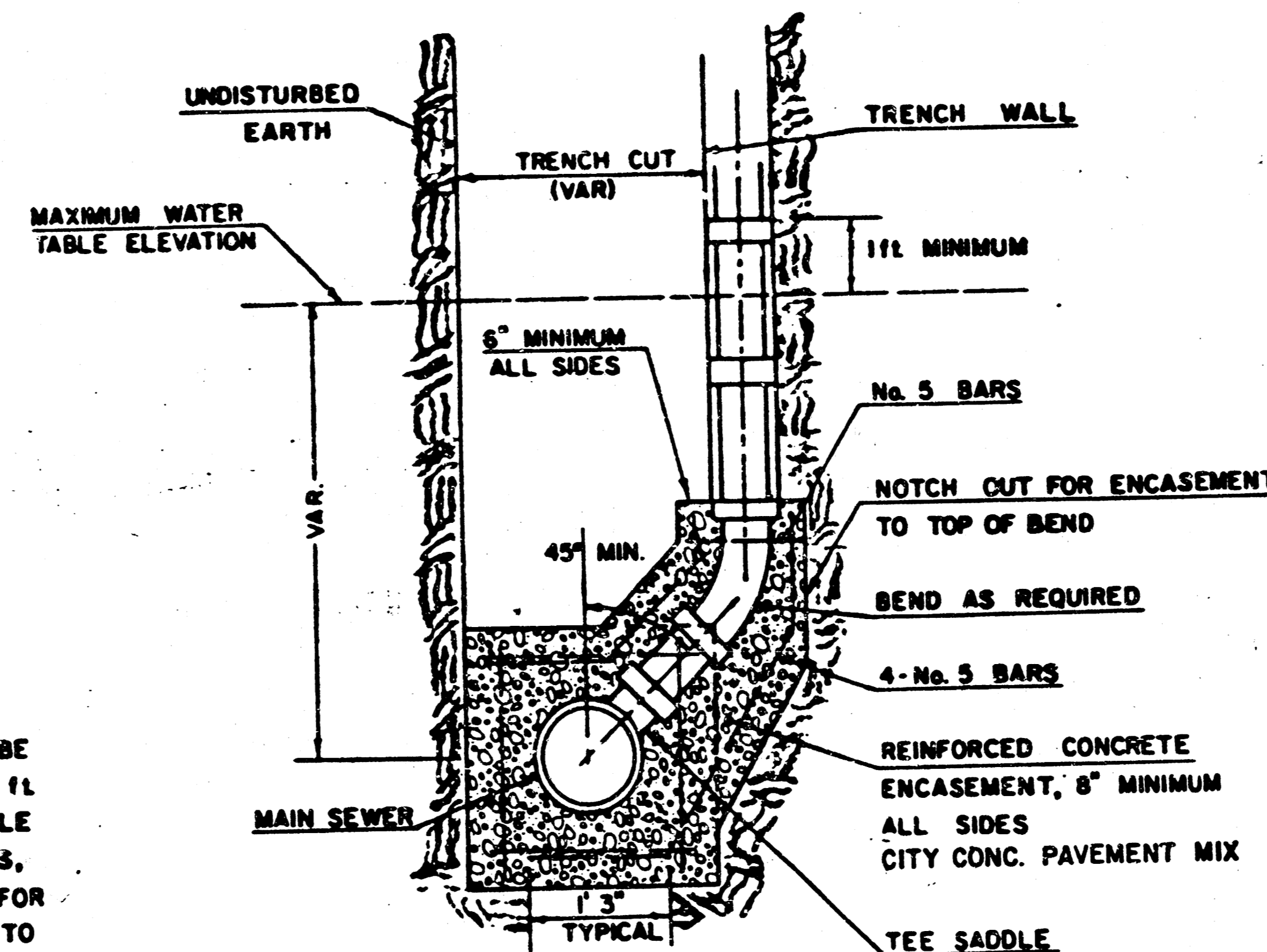
FURNISHING AND INSTALLING RISERS SHALL BE PAID FOR AT THE UNIT-PRICES BID FOR 4" PIPE, 6" PIPE AND REINFORCED CONCRETE ENCASUREMENT FOR THE VARIOUS MAIN SEWER PIPE SIZES INDICATED; WHICH PRICE SHALL INCLUDE ALL COSTS FOR COMPLETION OF THIS ITEM INCLUDING SADDLES, BENDS, CONCRETE, REINFORCING STEEL, CAPS OR PLUGS, AND ALL OTHER NECESSARY MATERIALS OR WORK. CONCRETE ENCASUREMENT OF THE RISER PIPE TO THE TOP OF THE BEND AS SHOWN IN THE DRAWINGS WILL NOT BE PAID FOR DIRECTLY AND THE COST FOR THIS WORK SHALL BE CONSIDERED AS SUBSIDIARY TO THE OTHER ITEMS OF WORK.

THE PROJECT INSPECTOR SHALL REPORT ON INSPECTOR CARDS THE LOCATION OF ALL RISERS CONSTRUCTED AS MEASURED FROM THE NEAREST MANHOLE, THE DIRECTION OF SERVICE, THE ELEVATION OF THE TOP OF THE RISER, AND THE PAY QUANTITIES INVOLVED. THE PROJECT INSPECTOR SHALL ALSO REPORT ON INSPECTOR CARDS THE LOCATION, DIRECTION OF SERVICE, AND SIZE OF ALL STUBS INSTALLED IN MANHOLES.



TYPICAL RISER FOR SLOPING TRENCH WALLS

NOTE:
TOP OF 4" OR 6" RISER PIPE TO BE EXTENDED TO AN ELEVATION OF 1 FT. MINIMUM ABOVE THE WATER TABLE ELEVATION, WHEN WATER EXISTS, OR TO AN ELEVATION SUITABLE FOR PROVIDING SERVICE TO THE LOT TO BE SERVED AND THEN PLUGGED.



TYPICAL RISER FOR VERTICAL TRENCH WALLS

FILMED FROM THE BEST AVAILABLE COPY.....