

SANITARY SEWER PLANS
TOTAL PETROLEUM, INC.
TOTAL LOCATION NO. 2770
LATERAL 243 SOUTHWEST INTERCEPTOR SEWER
PROJECT NO. 468-81700

CITY OF WICHITA, KANSAS
MICHAEL E. LINDEBAK, CITY ENGINEER
INDEX CODE 742171

GENERAL NOTES

1. THE CONTRACTOR SHALL BE RESPONSIBLE FOR PRESERVING PROPERTY IRONS. THE CONTRACTOR WILL BE REQUIRED TO RE-ESTABLISH ANY PROPERTY IRONS WHICH ARE DAMAGED OR DESTROYED BY HIS CONSTRUCTION OPERATIONS. SUCH IRONS SHALL BE RE-ESTABLISHED BY A LICENSED LAND SURVEYOR IN ACCORDANCE WITH STATE LAWS.
2. EXISTING UTILITIES AND THEIR LOCATIONS, AS SHOWN ON THE PLANS REPRESENT THE BEST INFORMATION OBTAINABLE FOR DESIGN. LOCATION INFORMATION HAS BEEN OBTAINED FROM THE VARIOUS UTILITY COMPANIES AND IS EITHER FROM COMPANY RECORD DRAWINGS OR COMPANY PROVIDED FIELD LOCATIONS. THE PLAN LOCATIONS SHOWN ARE NOT GUARANTEED. ADDITIONAL EXISTING UTILITIES MAY ALSO BE ENCOUNTERED.
3. CONTRACTOR WILL BE REQUIRED TO PROVIDE A MINIMUM ADVANCE NOTICE OF FORTY-EIGHT (48) HOURS TO UTILITY COMPANIES PRIOR TO STARTING ANY EXCAVATION AS FOLLOWS:
 KANSAS ONE-CALL 1-800-344-7233
 or 687-2470 (LOCAL WICHITA)

THE CONTRACTOR MUST NOTIFY THE FOLLOWING IN CASE OF AN EMERGENCY:

SOUTHWESTERN BELL TELEPHONE COMPANY	1-571-2115
CABLEVISION	262-0661
KANSAS GAS & ELECTRIC (ELECTRIC)	264-1141
KANSAS GAS & ELECTRIC (GAS)	832-3180 OR 832-3169
CITY OF WICHITA SEWER MAINTENANCE	268-4908
ARKLA GAS COMPANY	942-8350 OR 263-8161
CITY OF WICHITA WATER DEPARTMENT	268-4908
WILLIAMS PIPELINE COMPANY	1-918-588-4200

4. RUBBLE FROM THE REMOVAL OF MISCELLANEOUS STRUCTURES AND EXCESS EXCAVATION WHICH IS TO BE WASTED SHALL BE DISPOSED OF ON SITES TO BE PROVIDED BY THE CONTRACTOR. THESE SITES SHALL BE APPROVED BY THE ENGINEER AS TO SUITABILITY, APPEARANCE AND SITE LOCATION. LOCATIONS THAT, IN THE OPINION OF THE ENGINEER, WILL LEAVE AN UNSIGHTLY APPEARANCE WILL NOT BE APPROVED. ALL DISPOSAL SITES MUST BE APPROVED BY THE KANSAS DEPARTMENT OF HEALTH AND ENVIRONMENT. MATERIAL EITHER STOCKPILED OR DISPOSED OF IN A FLOOD PLAIN WOULD REQUIRE A KANSAS STATE BOARD OF AGRICULTURE PERMIT. ANY MATERIAL DUMPED IN WATERS OF THE UNITED STATES OR WETLANDS IS SUBJECT TO U.S. CORPS OF ENGINEERS PERMITTING REGULATIONS. ANY MATERIAL BURIED OR STOCKPILED BEYOND APPROVED CONSTRUCTION LIMITS WOULD REQUIRE ADDITIONAL ARCHAEOLOGICAL INVESTIGATIONS UNLESS BURIED IN A PREVIOUSLY APPROVED BORROW LOCATION.
5. COST OF EXCAVATION, HAULING, AND DUMPING OF EXCESS EXCAVATION SHALL BE SUBSIDIARY TO THE PROJECT.
6. A PORTION OF EXCESS EXCAVATED MATERIAL SHALL BE MOUNDED AROUND MANHOLES WHICH EXTEND MORE THAN ONE (1) FOOT ABOVE THE EXISTING GROUND. SUCH MOUNDS SHALL BE CONSTRUCTED WITH A SIX (6) FOOT DIAMETER FLAT TOP WITH 4 TO 1 SIDE SLOPES DOWN TO THE ORIGINAL GROUND. THE ELEVATION OF THE FLAT TOP OF THE MOUND SHALL BE 0.4 FOOT BELOW THE TOP OF THE MANHOLE.
7. ALL STUBS AND PLUGGED PIPES SHALL BE LOCATED WITH GREEN PLASTIC TAPE IN THE SAME MANNER AS RISERS.
8. PRIOR TO LAYING SEWER LINES USING EXISTING STUBS IN EXISTING MANHOLES, THE CONTRACTOR SHALL EXPOSE AND VERIFY THE ELEVATION, GRADE AND ALIGNMENT OF EXISTING STUBS AND NOTIFY THE ENGINEER OF ANY DEVIATION FROM THE PLAN. WHERE CONNECTION TO AN EXISTING MANHOLE THAT DOES NOT HAVE AN EXISTING STUB OR THE STUB IS UNUSABLE DUE TO ELEVATION GRADE OR ALIGNMENT, THE CONTRACTOR SHALL RESHAPE THE EXISTING MANHOLE INVERT TO PROVIDE SMOOTH FLOW. THE COST OF RESHAPING EXISTING MANHOLE INVERTS IS INCIDENTAL TO THE PROJECT.
9. TREES AND SHRUBS IN PUBLIC RIGHT-OF-WAY WHICH ARE IN DIRECT CONFLICT WITH PROPOSED NEW CONSTRUCTION SHALL BE REMOVED BY THE CONTRACTOR WITH THE ENGINEER'S APPROVAL. TREES AND SHRUBS WHICH ARE NOT IN DIRECT CONFLICT WITH PROPOSED NEW CONSTRUCTION SHALL BE SAVED AND PROTECTED FROM DAMAGE.
10. ALL DISTURBED AREAS TO BE SEEDED PER STD. COW SPECIFICATIONS WITHIN 10 DAYS OF CONSTRUCTION. COST SHALL BE SUBSIDIARY TO PROJECT.

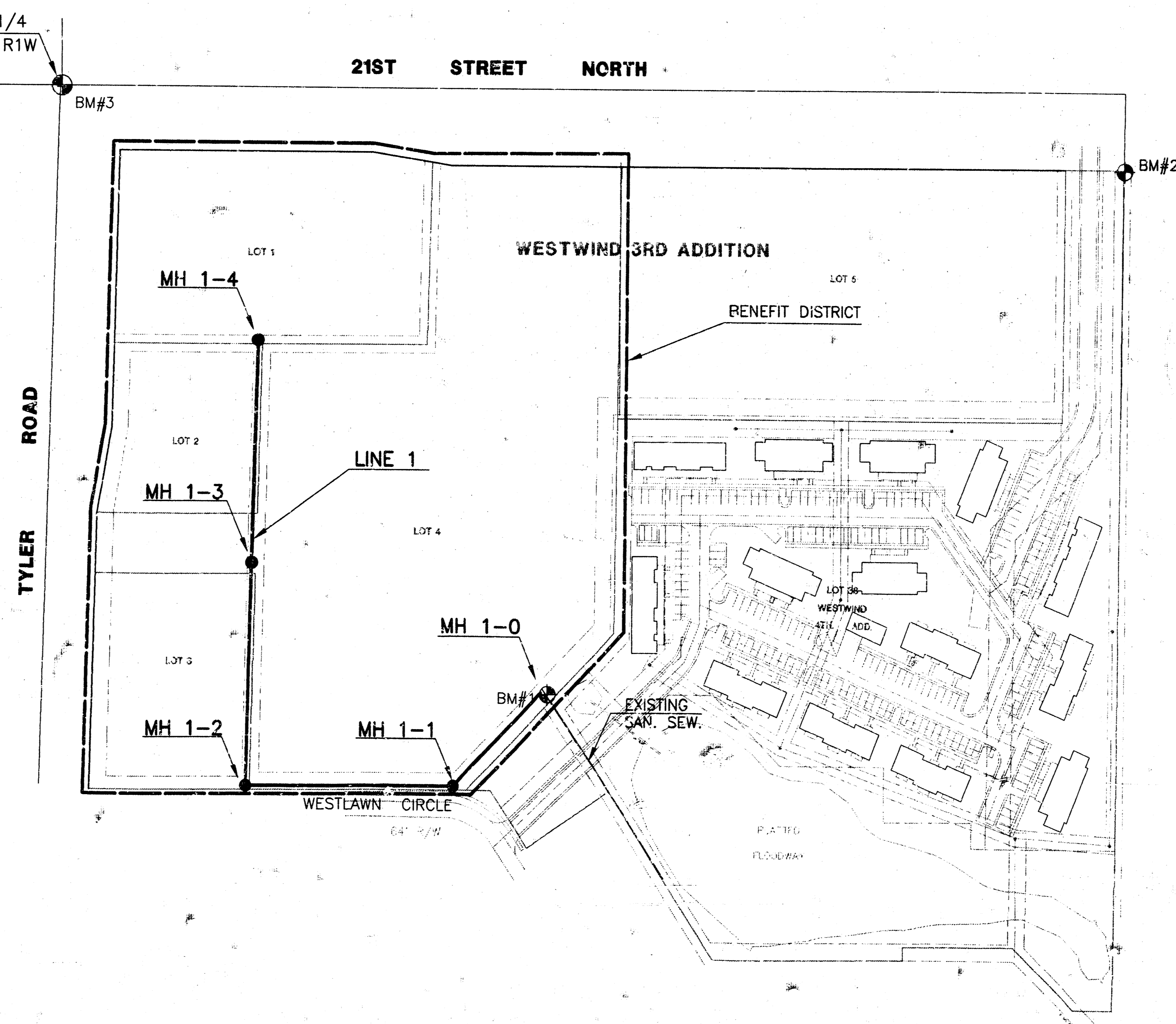
INDEX TO DRAWINGS

SHEET NO.	DESCRIPTION
1	TITLE SHEET
2	DETAILS
3	LINE 1
4-5	FINAL PLATS

BENCHMARKS

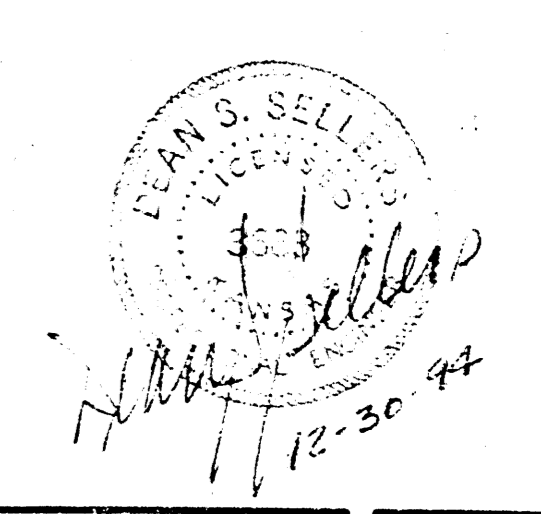
- BM #1 PK NAIL SET IN S. EDGE OF MANHOLE 114' N. & 90' E. OF THE S.W. COR. OF LOT 38, WESTWIND 4TH ADDITION.
 ELEV. = 168.15 CITY DATUM
- BM #2 RR SPIKE SET IN S. SIDE OF POWER POLE 60' S. OF CL 21ST ST. NO. AT THE N.E. COR. OF LOT 38, WESTWIND 4TH ADDITION.
 ELEV. = 168.89 CITY DATUM
- BM #3 73.6' N. & 53.3' E. OF CL OF 21ST & TYLER. 12.5' NNE OF CTR TRAFFIC LIGHT POLE. 91.7' NE OF SECTION CORNER IRON.
 ELEV. = 170.95 CITY DATUM

NW Cor., NW 1/4
 Sec. 9, T27S, R1W



SCALE: 1" = 100'
 LEGEND
 • MH

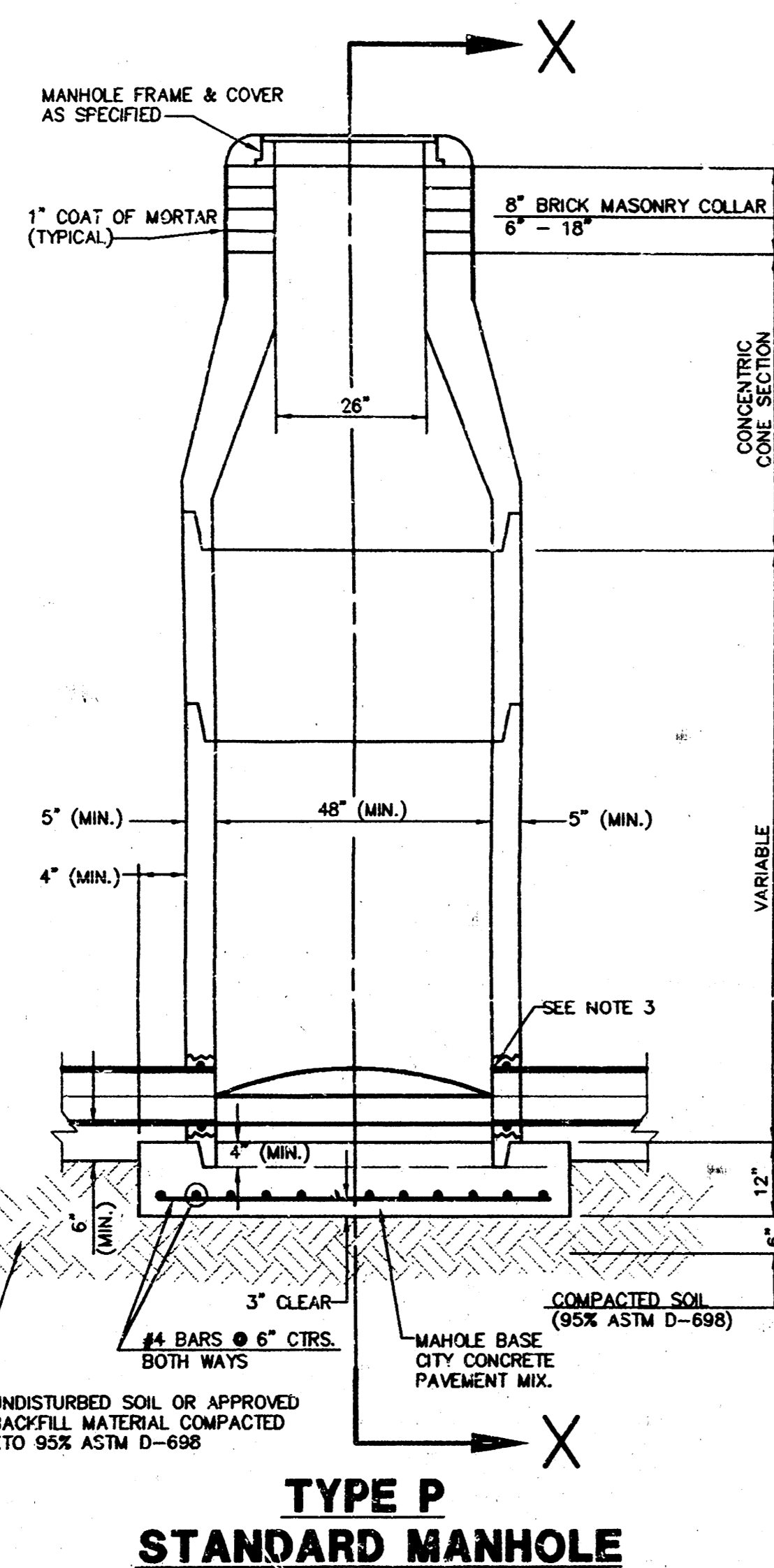
Booked per plans for 1/95



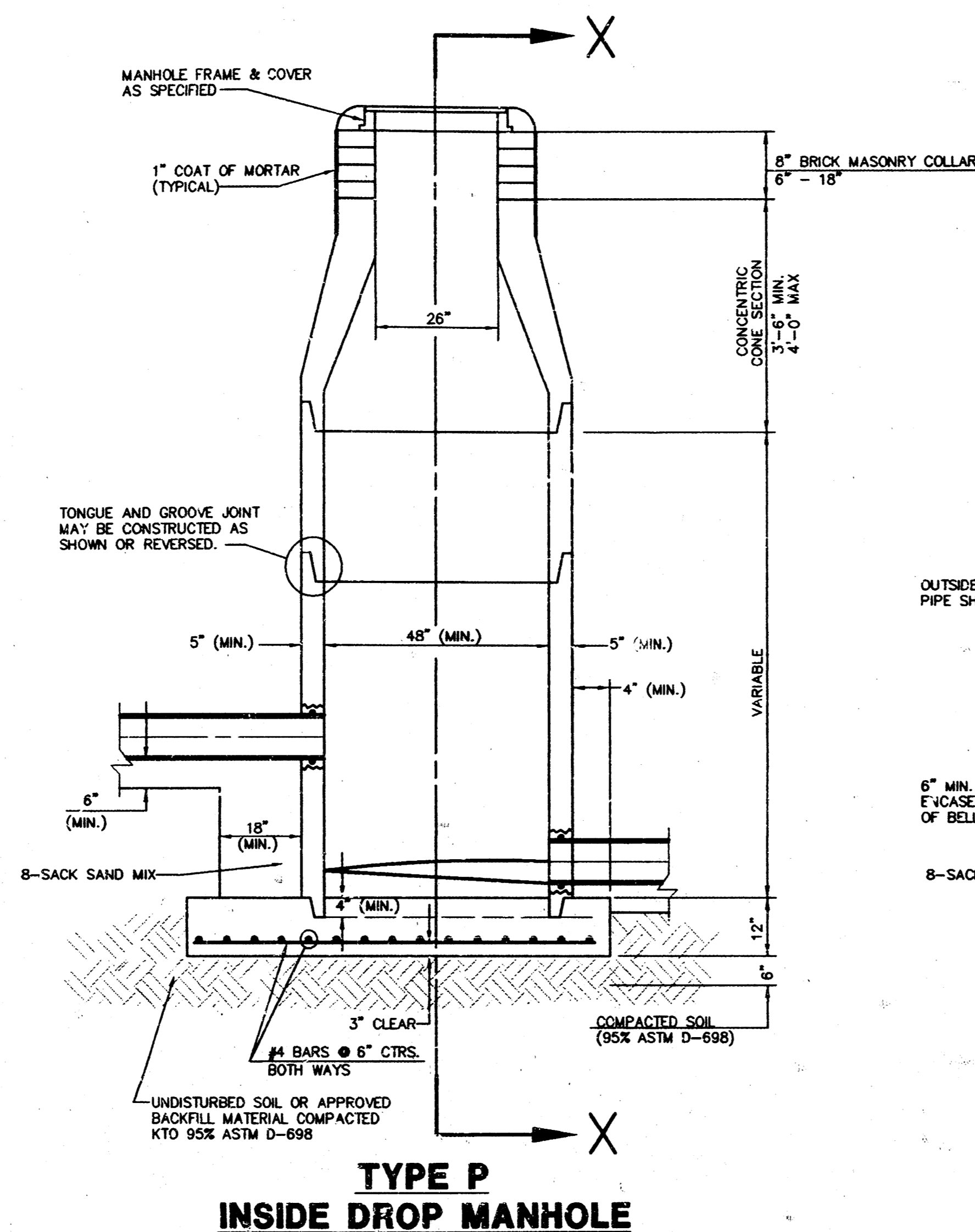
TK	TOTAL LOCATION NO. 2770	Design KKL
	SANITARY SEWER PLANS	Drawn by KKL
		Checked by DSS
		Date 11/94
		Job no. 94131-113-B
MID-KANSAS ENGINEERING CONSULTANTS INC. 411 NORTH WEBB ROAD WICHITA, KANSAS 67206		Sheet 1 5

SEWER APPURTENANCES DETAILS

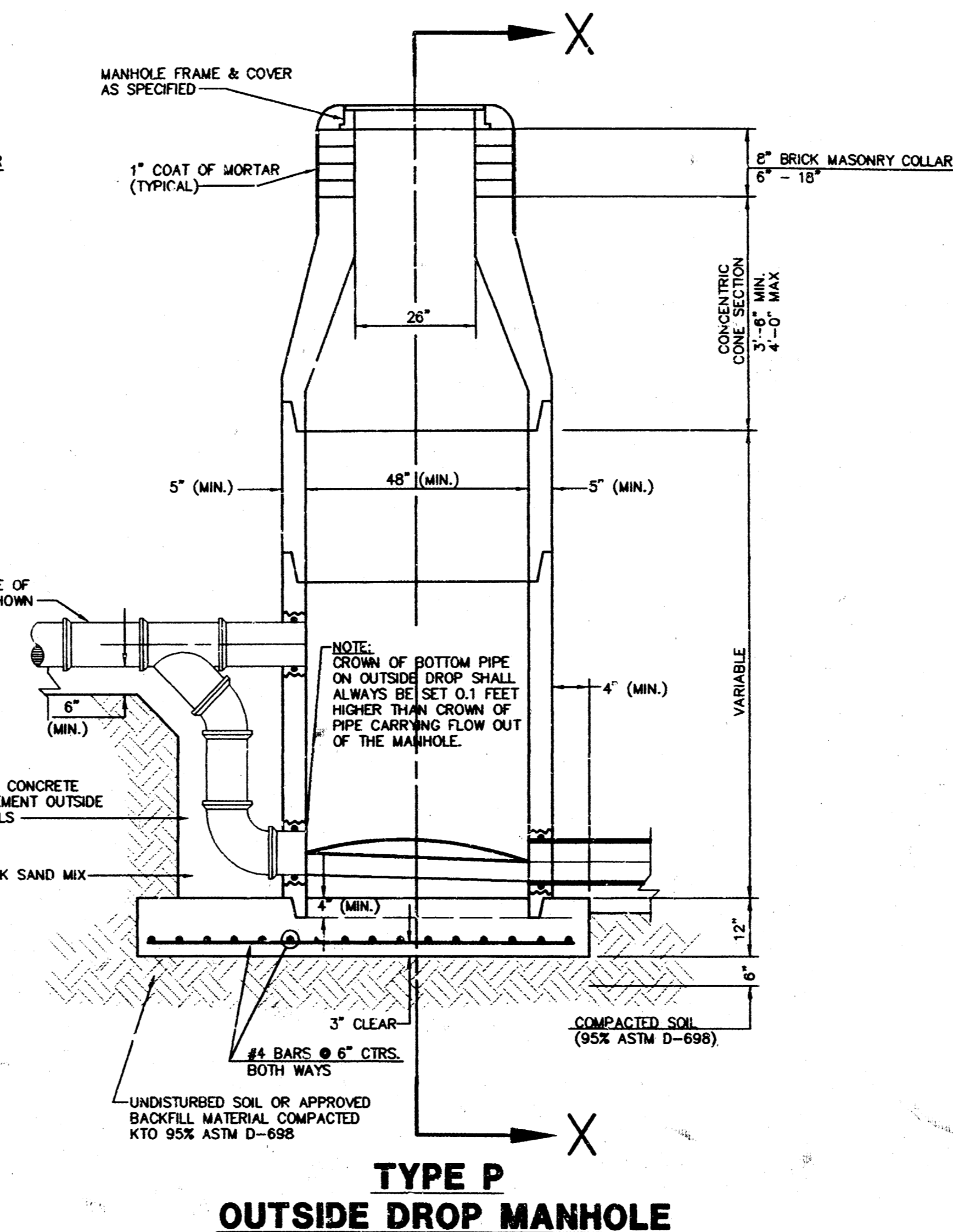
ADOPTED AS STANDARD DESIGN
BY
CITY OF WICHITA



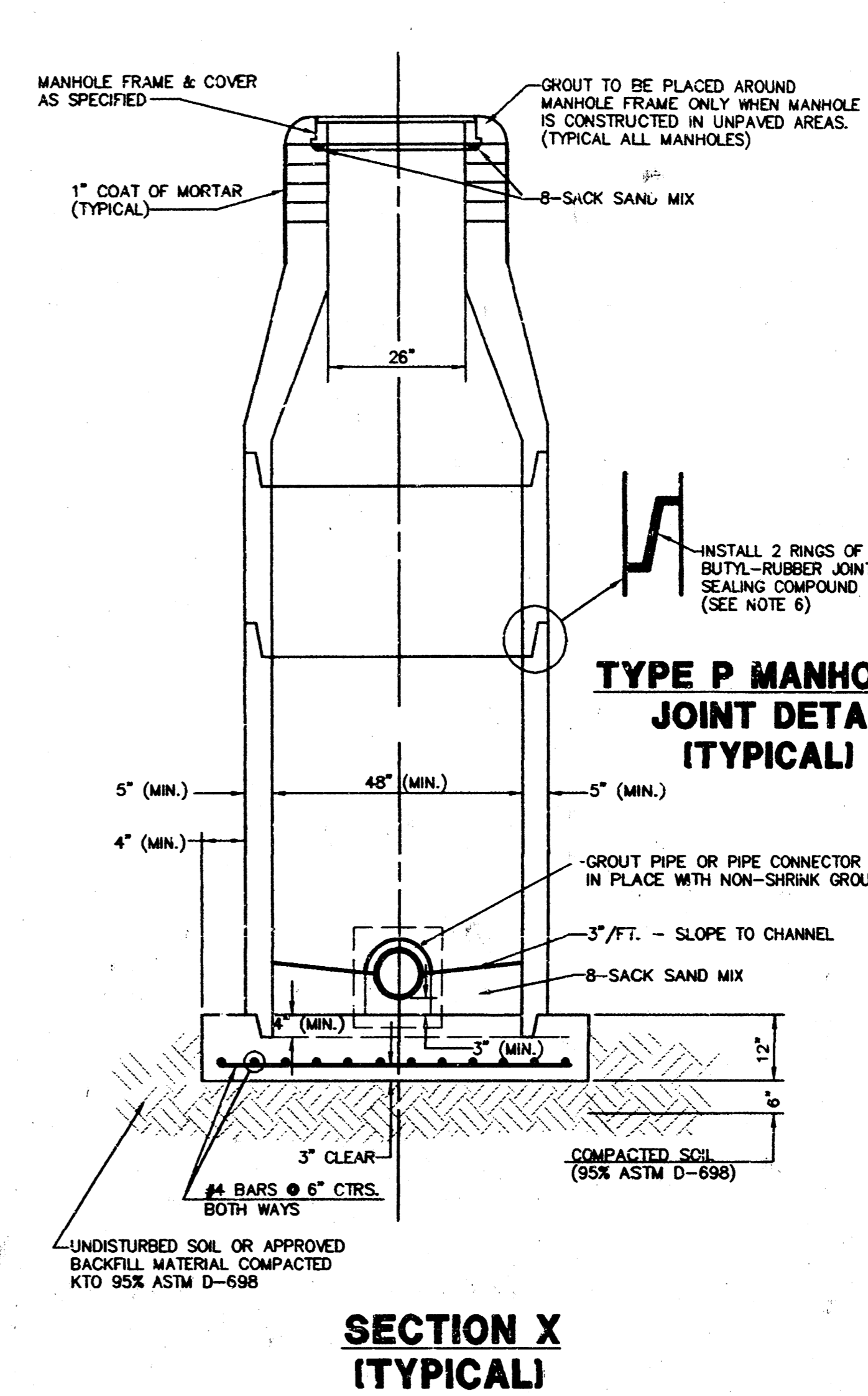
**TYPE P
STANDARD MANHOLE**



**TYPE P
INSIDE DROP MANHOLE**



**TYPE P
OUTSIDE DROP MANHOLE**



**SECTION X
(TYPICAL)**

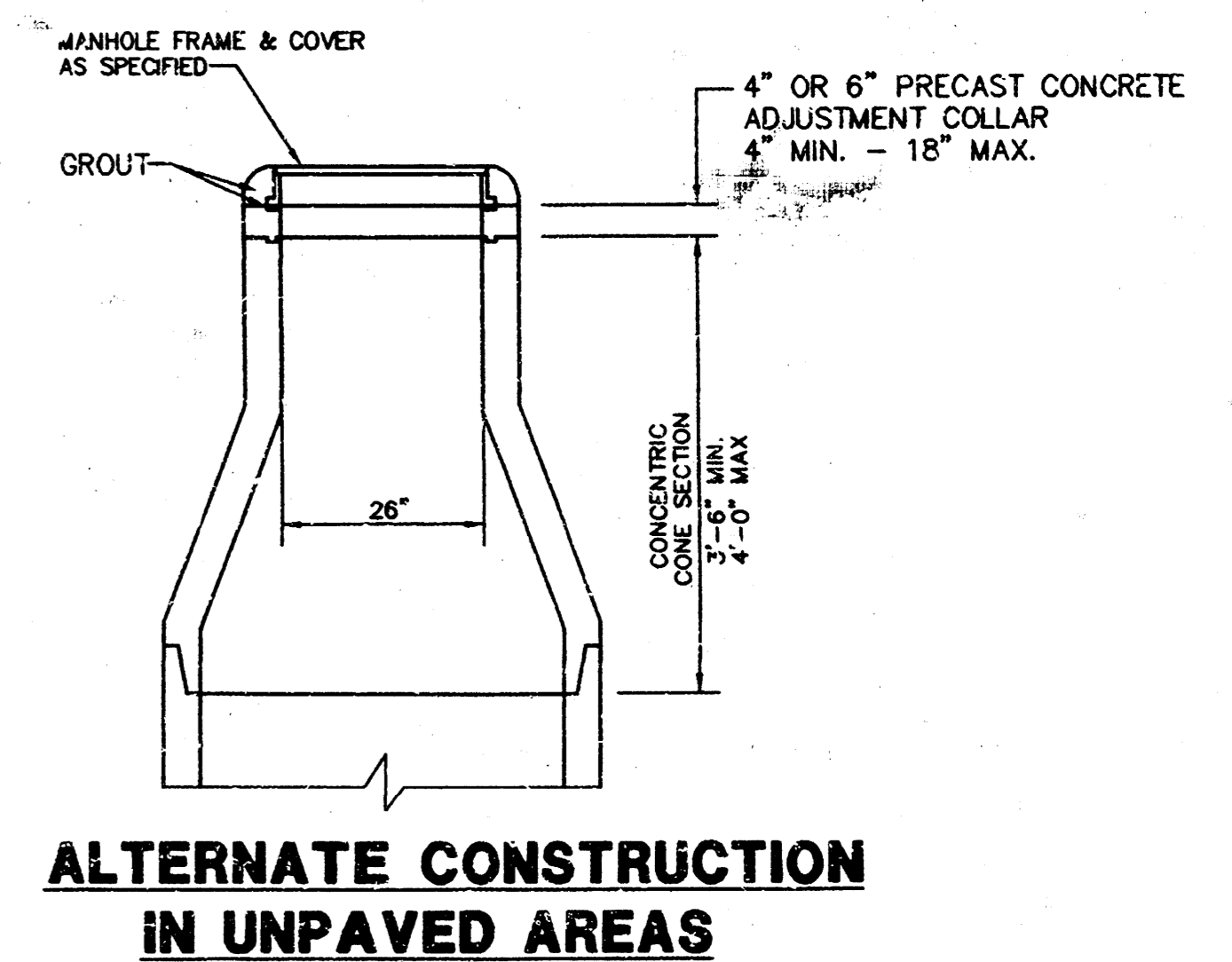
GENERAL NOTES

PRECAST MANHOLE NOTES

- ALL PRECAST CONCRETE MANHOLE SECTIONS SHALL CONFORM TO THE LATEST REVISIONS OF A.S.T.M. C478 AS MODIFIED BY THE SPECIFICATIONS.
- NON-SHRINK GROUT SHALL BE NON-METALLIC TYPE.
- APPROVED FLEXIBLE WATERSTOP GASKETS SHALL BE INSTALLED TO JOIN THE SEWER TO THE MANHOLE WALL WHEN A.B.S. COMPOSITE PIPE OR P.V.C. PIPE IS USED. FOR OTHER TYPES OF PIPE THE SEWER SHALL BE GROUTED IN PLACE WITH NON-SHRINK GROUT. THE SEWER PIPE SHALL BE SUPPORTED WITH CONCRETE ENCASEMENT A MINIMUM OF 3 FEET FROM THE MANHOLE WALL AND TO THE FIRST JOINT FOR V.C.P. SUCH THAT THE JOINT REMAINS FLEXIBLE.
- ALL INSIDE SURFACES OF THE CONCRETE MANHOLE WHICH WOULD BE EXPOSED TO SEWER GAS SHALL BE COATED WITH 2 COATS TNEMC SERIES 66 HI-BUILD EPOXOLINE, DRY THICKNESS OF 8 MILS (MIN.).
- EXTERIOR MANHOLE WALLS SHALL BE COATED WITH 1 COAT MOBILARMA 633 BITUMINUS COATING.
- JOINT SEALING COMPOUND SHALL BE KENT SEAL NO. 2 OR APPROVED EQUAL.
- PRECAST MANHOLES SHALL BE SET AT LEAST 4 INCHES INTO THE MANHOLE BASE.
- TOP OF MANHOLE FLOOR SLAB SHALL BE AT LEAST 3 INCHES BELOW THE FLOW LINE OF THE OUTLET PIPE TO INSURE SUFFICIENT MINIMUM THICKNESS OF SHAPED INVERT.
- LIFTING HOLES SHALL BE FILLED WITH NON-SHRINK GROUT AND THE INTERIOR SURFACE COATED AS SPECIFIED.
- MORTAR USED IN MASONRY CONSTRUCTION SHALL CONTAIN 8 SACKS OF CEMENT PER CUBIC YARD. CONCRETE USED IN MANHOLE BASES SHALL CONFORM TO THE REQUIREMENTS OF CONCRETE FOR CONCRETE PAVEMENT CONSTRUCTION AS SPECIFIED IN THE CITY STANDARD PAVING SPECIFICATIONS USING CITY CONCRETE PAVEMENT MIX WITHOUT AIR ENTERING ADMIXTURE. MORTAR SHALL BE PLACED AROUND THE MANHOLE RING AS SHOWN ON THE DRAWINGS WHEN MANHOLES ARE CONSTRUCTED IN UNPAVED AREAS. MANHOLES CONSTRUCTED WHERE PIPE SIZES ARE SMALLER THAN 24" SHALL HAVE AN INSIDE DIAMETER OF 4". MANHOLES CONSTRUCTED WHERE PIPE SIZES ARE 24" OR LARGER SHALL HAVE AN INSIDE DIAMETER OF 5". COMPLETED MANHOLE SHALL BE WITHOUT LEAKS AND WATER TIGHT.

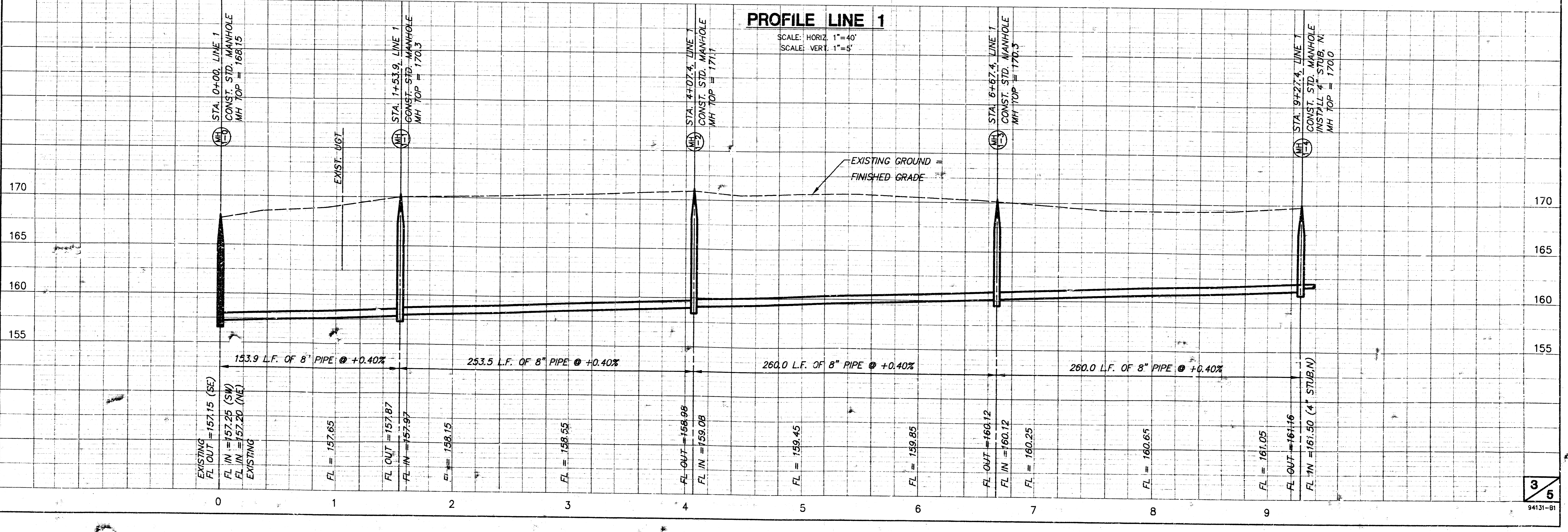
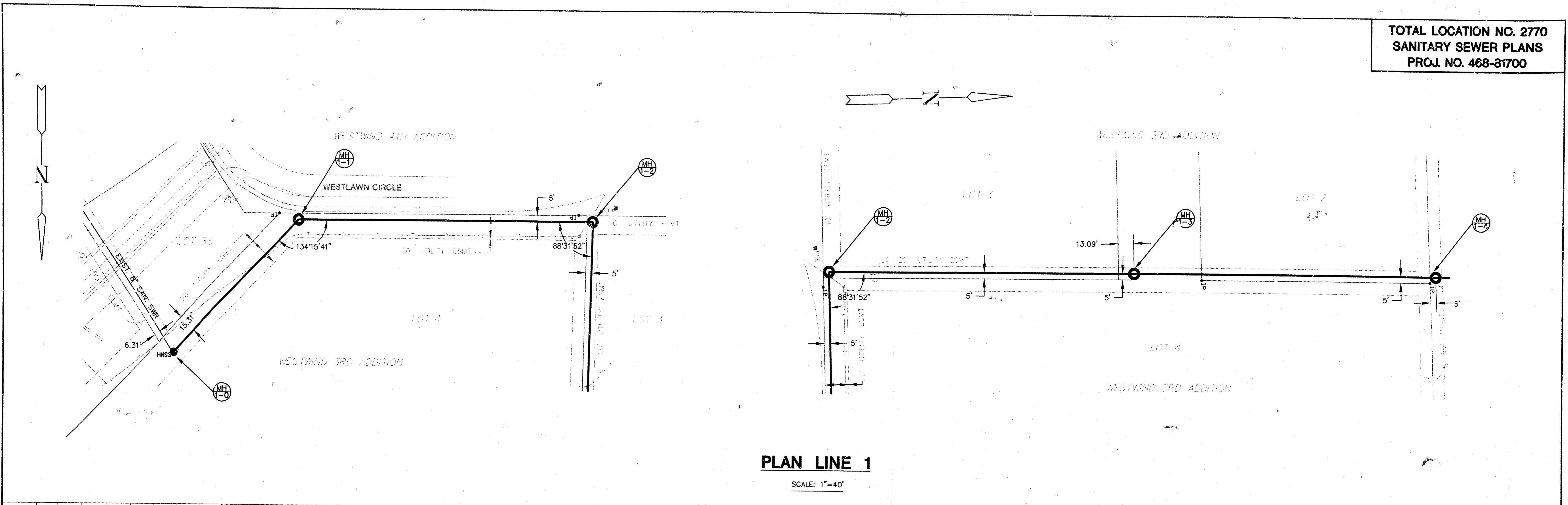
- REINFORCING STEEL SHALL BE INSTALLED IN THE MANHOLE BASES AND SHALL CONSIST OF NO. 4 BARS PLACED ON 6" CENTERS IN BOTH DIRECTIONS. THE MANHOLE BASE REINFORCEMENT SHALL BE PLACED AT LEAST 3" ABOVE THE BOTTOM OF THE MANHOLE BASE. ALL COSTS FOR FURNISHING AND INSTALLING REINFORCING STEEL SHALL BE INCLUDED IN THE UNIT PRICE BID FOR THE MANHOLE.
- OPENINGS SHALL BE CUT INTO THE MANHOLE WALL WHEN OUTSIDE DROPS ARE CONSTRUCTED ON EXISTING MANHOLES. SUCH OPENINGS CUT INTO EXISTING MANHOLES SHALL BE AS SMALL AS PRACTICAL TO FACILITATE INSTALLING AND GROUTING THE NEW PIPE IN PLACE. WATERSTOP GASKETS SHALL BE USED WITH P.V.C. AND A.B.S. COMPOSITE PIPE. THE NEW PIPE SHALL BE GROUTED INTO THE OPENING USING AN APPROVED NONSHRINK GROUT FOR THE FULL MANHOLE WALL THICKNESS. THE EXTERIOR OF THE COMPLETED CONNECTION SHALL BE SEALED WITH AN APPROVED BITUMINOUS COATING SUCH THAT THE CONNECTION WILL BE WATER TIGHT. FLOOR OF MANHOLE SHALL BE MODIFIED TO FORM NEW FLOW CHANNEL FOR THE NEW CONNECTION AS INDICATED BY THE DRAWING. THIS WORK, INCLUDING MODIFICATION OF MANHOLE FLOOR, SHALL BE PAID FOR AT THE UNIT PRICE BID FOR OUTSIDE DROP STACK CONSTRUCTED ON EXISTING MANHOLE.
- THE FLOORS OF ALL MANHOLES SHALL BE SHAPED WITH FLOW CHANNELS SUCH THAT THE MANHOLES WILL BE SELF-CLEANING AND FREE OF AREAS WHERE SOLIDS COULD BE DEPOSITED AS SEWAGE FLOWS THROUGH THE MANHOLE FROM ALL INLET PIPES TO THE OUTLET PIPE. FLOW CHANNELS SHALL BE FORMED TO MATCH THE BOTTOM HALVES OF THE INFLOWING PIPES AND THE OUTFLOWING PIPE AS SHOWN BY THE DRAWINGS EXCEPT FOR INSIDE DROP MANHOLES. FLOW CHANNELS FOR INSIDE DROP MANHOLES SHALL BE CONSTRUCTED AS INDICATED BY THE DRAWING. MANHOLE FLOORS SHALL HAVE SLOPES OF 3 INCHES PER FOOT IN THE AREAS OUTSIDE OF THE FLOW CHANNELS SLOPED TOWARD THE FLOW CHANNELS. PIPES LAID THROUGH MANHOLES SHALL HAVE THE TOP HALF REMOVED TO NEAT LINES FOR THE FULL INSIDE DIAMETER OF THE MANHOLE. MANHOLE FLOORS SHALL THEN BE SHAPED AROUND THE BOTTOM HALF OF THE PIPE WHICH FORMS THE FLOW CHANNEL.

- PIPES INSTALLED WITHIN THE EXCAVATION MADE FOR THE MANHOLE SHALL BE CRADLED WITH CONCRETE TO THE LIMITS OF THE MANHOLE EXCAVATION. WHEN CLAY PIPE IS USED, THE CRADLE SHALL EXTEND TO THE FIRST JOINT OUTSIDE THE MANHOLE. THE CRADLE SHALL BE TERMINATED AT THE CLAY PIPE JOINT IN A MANNER WHICH WILL MAINTAIN THE FLEXIBILITY OF THE JOINT. COST OF CRADLE WITHIN MANHOLE EXCAVATION OR TO CLAY PIPE JOINTS ADJACENT TO MANHOLE SHALL BE INCLUDED IN THE UNIT PRICE BID FOR THE MANHOLE.
- MANHOLE COVER CASTINGS AND MANHOLE FRAME CASTINGS SHALL CONFORM TO THE REQUIREMENTS AS INDICATED IN THE STANDARD SPECIFICATIONS AND AS SHOWN IN THE STANDARD DETAIL DRAWING.
- THE VERTICAL DROP IN INSIDE DROP MANHOLES SHALL NOT EXCEED 4' FOR INFLOWING PIPES SIZED 12" OR SMALLER AND 2' FOR INFLOWING PIPES LARGER THAN 12". THE CROWNS OF INFLOWING PIPES SHALL NEVER BE SET LOWER THAN THE CROWN OF THE OUTFLOWING PIPE.
- STANDARD MANHOLES AND STANDARD INSIDE DROP MANHOLES SHALL BE BID AS STANDARD MANHOLES FOR THE TYPE AND DIAMETER INDICATED. OUTSIDE DROP MANHOLES SHALL BE BID AS STANDARD OUTSIDE DROP MANHOLES FOR THE TYPE AND DIAMETER INDICATED. ALL MANHOLE DIAMETERS WILL BE 4' UNLESS INDICATED OTHERWISE.
- A BRICK MASONRY COLLAR SHALL BE INSTALLED BETWEEN THE CAST IRON FRAME AND THE CONCENTRIC CONE. THE COLLAR WILL HAVE 8" WALLS AND A VERTICAL HEIGHT OF 6" MINIMUM AND 18" MAXIMUM. A 1" COAT OF MORTAR WILL BE PLASTERED ON THE OUTSIDE OF THE COLLAR.



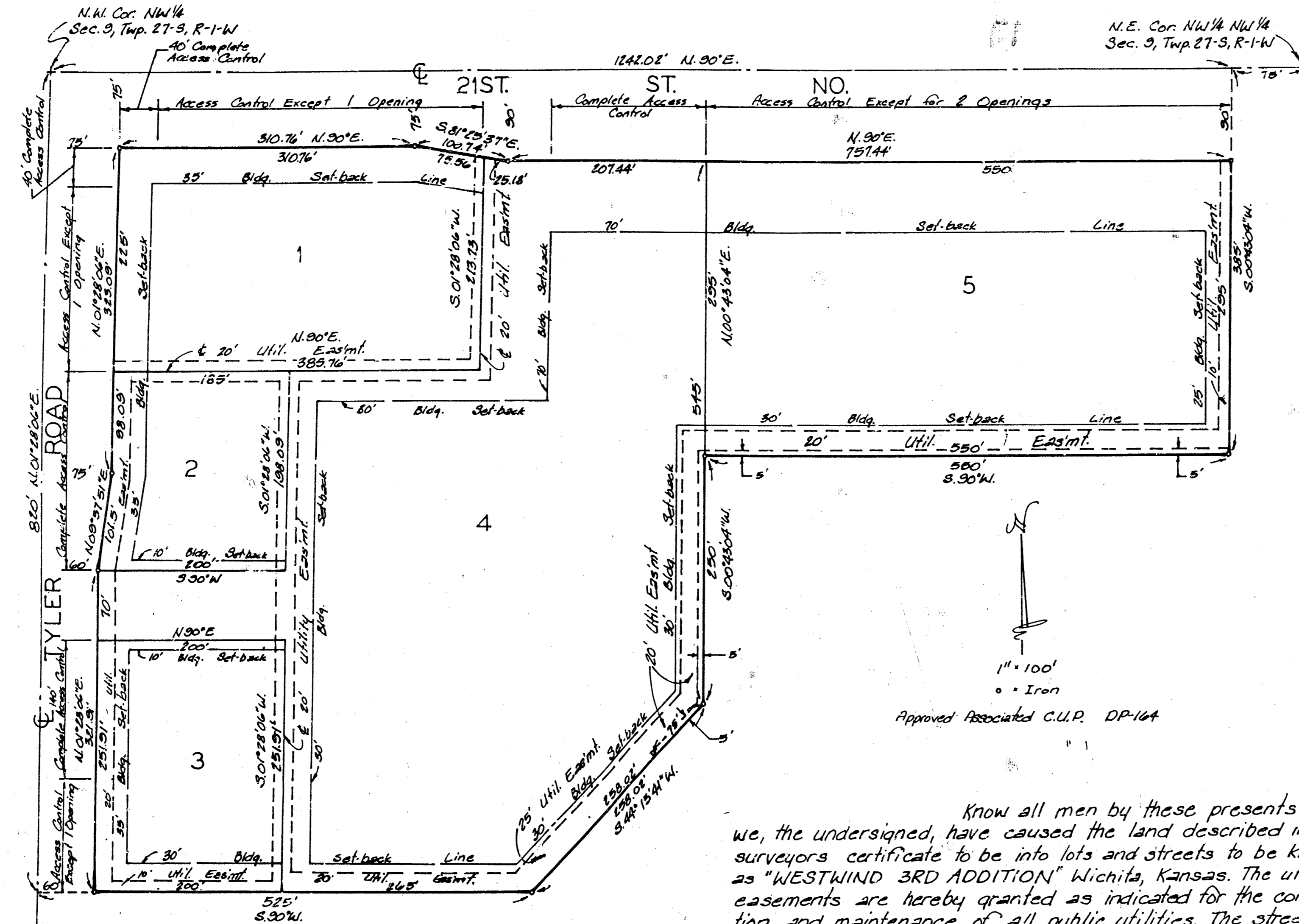
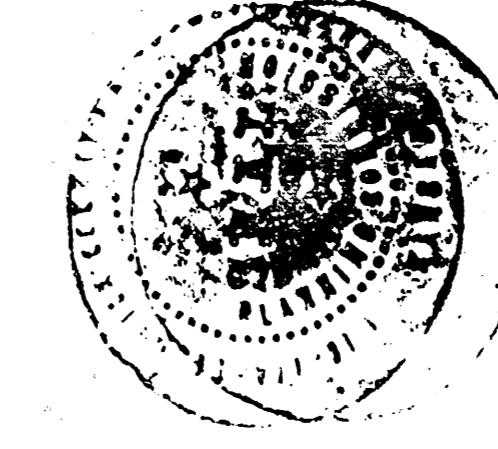
**ALTERNATE CONSTRUCTION
IN UNPAVED AREAS**

	TOTAL LOCATION NO. 2770 PROJ. NO. 468-81700	Design GA Drawn by AN Checked by GA Date 11/20 Job No. S41318D
	MANHOLE DETAILS	Sheet 2 of 5
MID-KANSAS ENGINEERING CONSULTANTS INC. 411 NORTH WEBB ROAD WICHITA, KANSAS 67206		(316) 684-9600



WESTWIND 3RD ADDITION

WICHITA, KANSAS



This plat of "WESTWIND 3RD ADDITION" Wichita, Kansas, has been submitted to and approved by the Wichita-Sedgewick County Metropolitan Area Planning Commission, Wichita, Kansas. Dated this 16th day of April 1987. Wichita-Sedgewick County Metropolitan Area Planning Commission

[Signature] Chairman
[Signature] Secretary
 Marvin S. Kroul

This plat approved and all dedications shown hereon accepted by the Board of Commissioners of the City of Wichita, Kansas, this 22nd day of May 1987.

[Signature]
 Robert G. Knight
 Deputy City Engineer
 for Dale C. Rice

Entered on transfer records this 3rd day of June 1987.

[Signature]
 Dan Wright Jim Powell

State of Kansas ss. This is to certify that this plat has been filed for record in the office of the Register of Deeds this 24th day of June 1987, at 2:33 o'clock P.M., and is duly recorded.

[Signature] Register of Deeds
[Signature] Deputy
 Ed Reso

We, the undersigned, holders of mortgage on the above described property do hereby consent to the plat of "WESTWIND 3RD ADDITION" Wichita, Kansas.

Citadel Bank of Wichita
[Signature] Vice President
 Thomas G. Lambert

Westwind Associates II, a Kansas General Partnership
[Signature] General Partner
 Leonard E. Marotte

Bill Bachman & Associates, Inc.
[Signature] President
 Bill Bachman

State of Kansas ss. The foregoing instrument acknowledged before me this 18th day of May 1987, by Thomas G. Lambert, Vice President of Citadel Bank of Wichita, on behalf of the Bank.

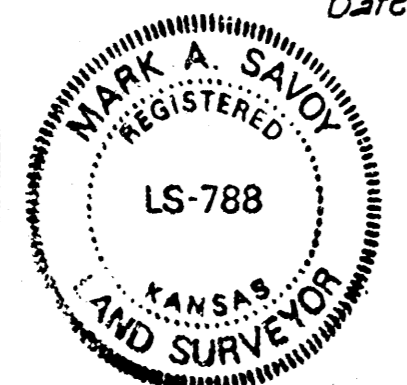
[Signature] Notary Public
 Rosemary Wittman
 ROSEMARY WITTMAN
 NOTARY PUBLIC
 STATE OF KANSAS
 MY APPT. EXPIRES 5-11-88

State of Kansas ss. The foregoing instrument acknowledged before me this 23rd day of May 1987, by Leonard E. Marotte, General Partner of Westwind Associates II, a Kansas General Partnership, on behalf of the Partnership.

[Signature] Notary Public
 Mildred E. Frank
 MILDRED E. FRANK
 NOTARY PUBLIC
 STATE OF KANSAS

State of Kansas ss. We, Baughman Company, P.A. Surveyors in and for said county and state do hereby certify that we have surveyed and platted "WESTWIND 3RD ADDITION" Wichita, Kansas, and that the accompanying plat is a true and correct exhibit of the property surveyed, described as that part of the NW 1/4 of the NW 1/4 of Sec. 9, Twp. 27-S, R-1-W of the 6th P.M., Sedgewick County, Kansas, described as beginning at the N.W. Corner thereof; thence south along the west line of said NW 1/4, 820 feet; thence east parallel with the north line of said NW 1/4, 525 feet; thence northeasterly 258.02 feet more or less to a point 635 feet south of the north line of said NW 1/4, and 625 feet west of the east line of the NW 1/4 of said NW 1/4; thence north parallel with the east line of NW 1/4 of said NW 1/4, 250 feet; thence east parallel with the north line of said NW 1/4, 550 feet; thence north parallel with the east line of the NW 1/4 of said NW 1/4, 385 feet to a point on the north line of said NW 1/4; thence west 1242.02 feet to the place of beginning.

12 May 1987 Date
 Baughman Company, P.A.
[Signature] Surveyor
 Mark A. Sady
 Mark A. Sady



Know all men by these presents that we, the undersigned, have caused the land described in the surveyors certificate to be into lots and streets to be known as "WESTWIND 3RD ADDITION" Wichita, Kansas. The utility easements are hereby granted as indicated for the construction and maintenance of all public utilities. The streets are hereby dedicated to and for the use of the public. All abutters rights of access to or from Tyler Road over and across the west line of Lots 1, 2 and 3 and to or from 21st St. No. over and across the north line of Lots 1, 4 and 5 are hereby granted to the City of Wichita, provided however, that lot 1 shall have access to Tyler Road at 1 point over and across all except the north 40 feet of the west line thereof and lot 3 shall have access to Tyler Road at one point over and across all except the north 140 feet of the west line thereof and lot 1 shall have access to 21st St. No. at 1 point over and across all except the west 40 feet of the north line thereof and lot 4 shall have access to 21st St. No. at 1 point over and across the west 70 feet of the north line thereof and lot 5 shall have access to 21st St. No. at 2 points over and across the north line thereof as shall be determined by the City Engineer of Wichita, Kansas.

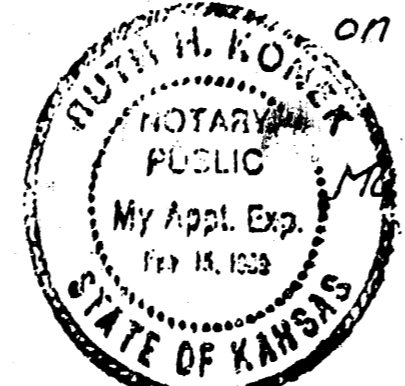
A. J. Development Company, a joint venture
[Signature] General Partner
 Aleksandar Madjicki

State of Kansas ss. The foregoing instrument acknowledged before me this 13th day of May 1987, by Aleksandar Madjicki, General Partner of A. J. Development Company, a joint venture, on behalf of the company.

[Signature] Notary Public
 Mildred E. Frank
 My Appt. Exp. 2/3/91

State of Kansas ss. The foregoing instrument acknowledged before me this 13th day of May 1987, by Bill Bachman, President of Bill Bachman & Associates, Inc., on behalf of the corporation.

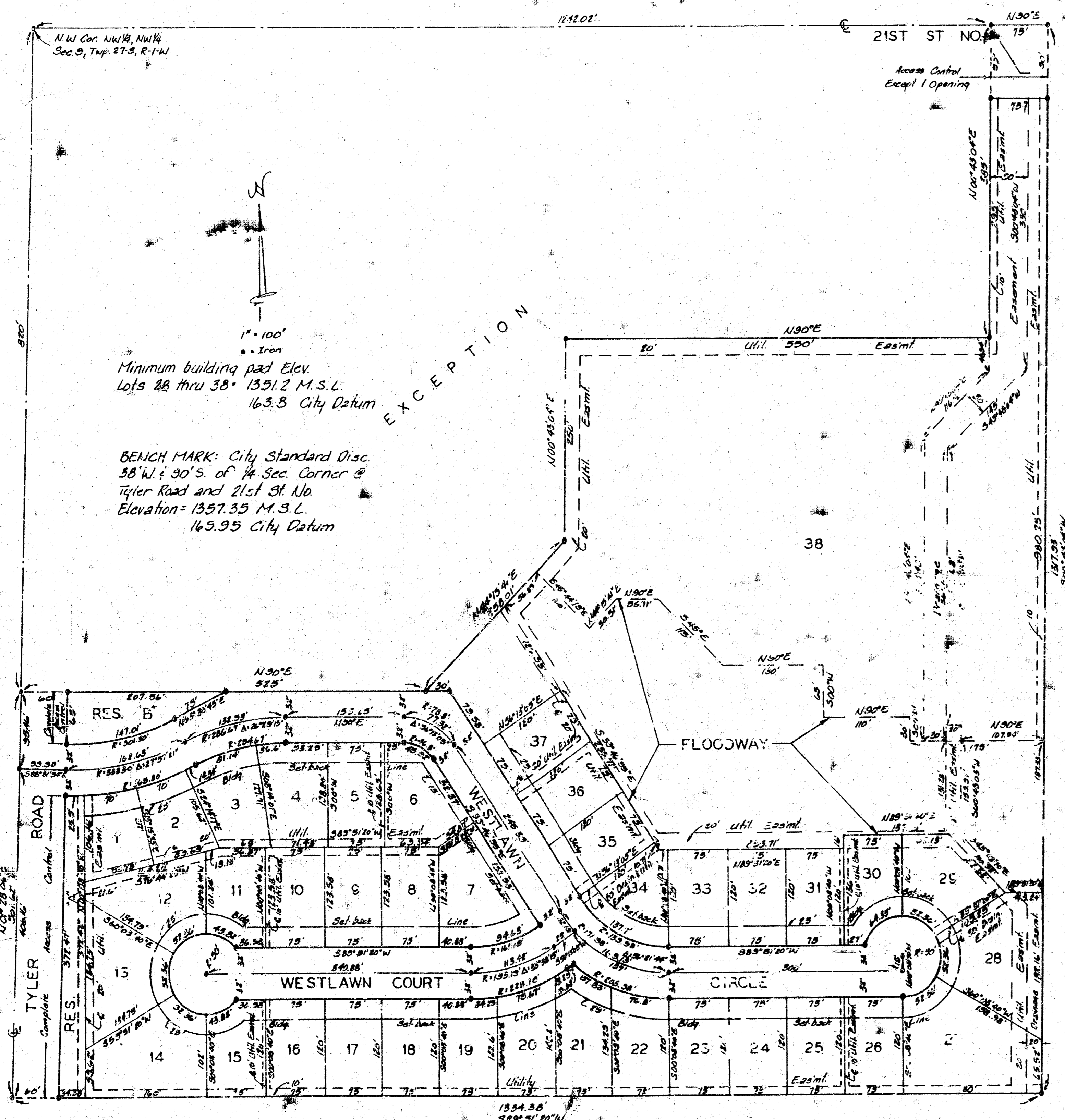
[Signature] Notary Public
 Ruth H. Konek
 My Appt. Exp. 2-15-89



20.00

WESTWIND 4TH ADDITION

WICHITA, KANSAS



State of Kansas 25.5 Sedgwick County 5.5 We, Baughman Company, P.A., Surveyors in and for said county and state do hereby certify that we have surveyed and platted "WESTWIND 4TH ADDITION", Wichita, Kansas, and that the accompanying plat is a true and correct exhibit of the property surveyed, described as the NW 1/4 of the NW 1/4 of Sec. 9, Twp. 27-S, R. 14-W of the 6th P.M., Sedgwick County, Kansas, except that part described as beginning at the NW Corner thereof; thence south along the west line of said NW 1/4, 820 feet; thence east parallel with the north line of said NW 1/4, 525 feet; thence northeasterly 258.01 feet more or less to a point 635 feet south of the north line of said NW 1/4, and 625 feet west of the east line of the NW 1/4 of said NW 1/4; thence north parallel with the east line of the NW 1/4 of said NW 1/4, 250 feet; thence east parallel with the north line of said NW 1/4, 550 feet; thence north parallel with the east line of the NW 1/4 of said NW 1/4, 383 feet to a point on the north line of said NW 1/4; thence west 1242.02 feet to the place of beginning.

10 Sep 87 Date Baughman Company, P.A.
 Mark A. Baughman Surveyor



Know all men by these presents that we, the undersigned, have caused the land described in the surveyors certificates to be platted into Lots, streets and Reserves to be known as "WESTWIND 4TH ADDITION", Wichita, Kansas. The utility easements are hereby granted as indicated for the construction and maintenance of all public utilities. The drainage easements are hereby granted for drainage purposes. The streets are hereby dedicated to and for the use of the public. All abutters rights of access to or from 21st St No. over and across the north line of Lot 38 and to or from Tyler Road over and across the west line of Reserves A and B are hereby granted to the City of Wichita, provided however that Lot 38 shall have access to 21st St No. at 1 point as shall be determined by the City Engineer of Wichita, Kansas. Reserves A and B are hereby reserved for open space, landscaping, entrance features and are hereby granted for the construction and maintenance of all public utilities, and shall be the responsibility of the Home Owners Association for the Addition. The floodway easement is hereby reserved for drainage and surface water detention purposes. The floodway easement shall be the responsibility of the owners of Lot 38 until such time as the appropriate governing body elects to assume responsibility for maintenance and improvement of the drainage. The floodway easement may be used for landscaping, water features, paths and recreational facilities. No building shall be constructed on or within said floodway, nor shall any fill, change of grade, creation of channel or other work be carried on within said floodway without the permission of the City Engineer. No building shall be constructed below a minimum building pad elevation of 1351.2 M.S.L. / 163.8 City Datum on Lots 28 through 38 inclusive.

Westwind Associate II
 Leonard E. Marro General Partner

This plat of "WESTWIND 4TH ADDITION", Wichita, Kansas, has been submitted to and approved by the Wichita-Sedgwick County Metropolitan Area Planning Commission, Wichita, Kansas.
 Dated this 6th day of August, 1987.
 Wichita-Sedgwick County Metropolitan Area Planning Commission
 Mary Ellen Conley Vice-Chairman
 Marvin A. Trout Secretary

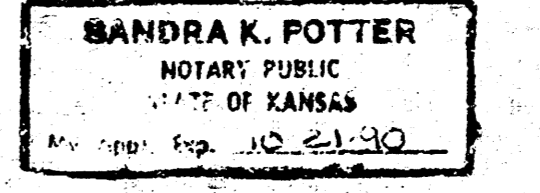
This plat approved and all dedications shown hereon accepted by the City Council of the City of Wichita, Kansas, this 13th day of August, 1987.
 Robert D. Knight Mayor
 Dale E. Pea Deputy City Clerk

Entered on transfer record this 29th day of October, 1987.

Ronald R. Miller County Clerk
 State of Kansas 25.5 Sedgwick County 5.5 This is to certify that this plat has been filed for record in the office of the Register of Deeds this 28th day of October, 1987, at 9 o'clock A.M., and is duly recorded.
 Ed Kesa Deputy Register of Deeds

We, the undersigned, holders of 2 mortgages on the above described property do hereby consent to the plat of "WESTWIND 4TH ADDITION", Wichita, Kansas.
 First National Bank of Atchita, Kansas
 R. B. Kuesler-Van, Vice President

State of Kansas 25.5 Sedgwick County 5.5 The foregoing instrument acknowledged before me this 18th day of September, 1987, by R. B. Kuesler-Van, Vice President of the First National Bank of Atchita, Kansas, on behalf of the Bank.
 Sandra K. Potter Notary Public
 My Appl. Exp. 10-21-90



20.00