

LATERAL 273 - S.W.I.

Sanitary Sewer to Serve WOODLAND AT THE PARK ADDITION

Project No.

468-76-245-81872-000-000-001

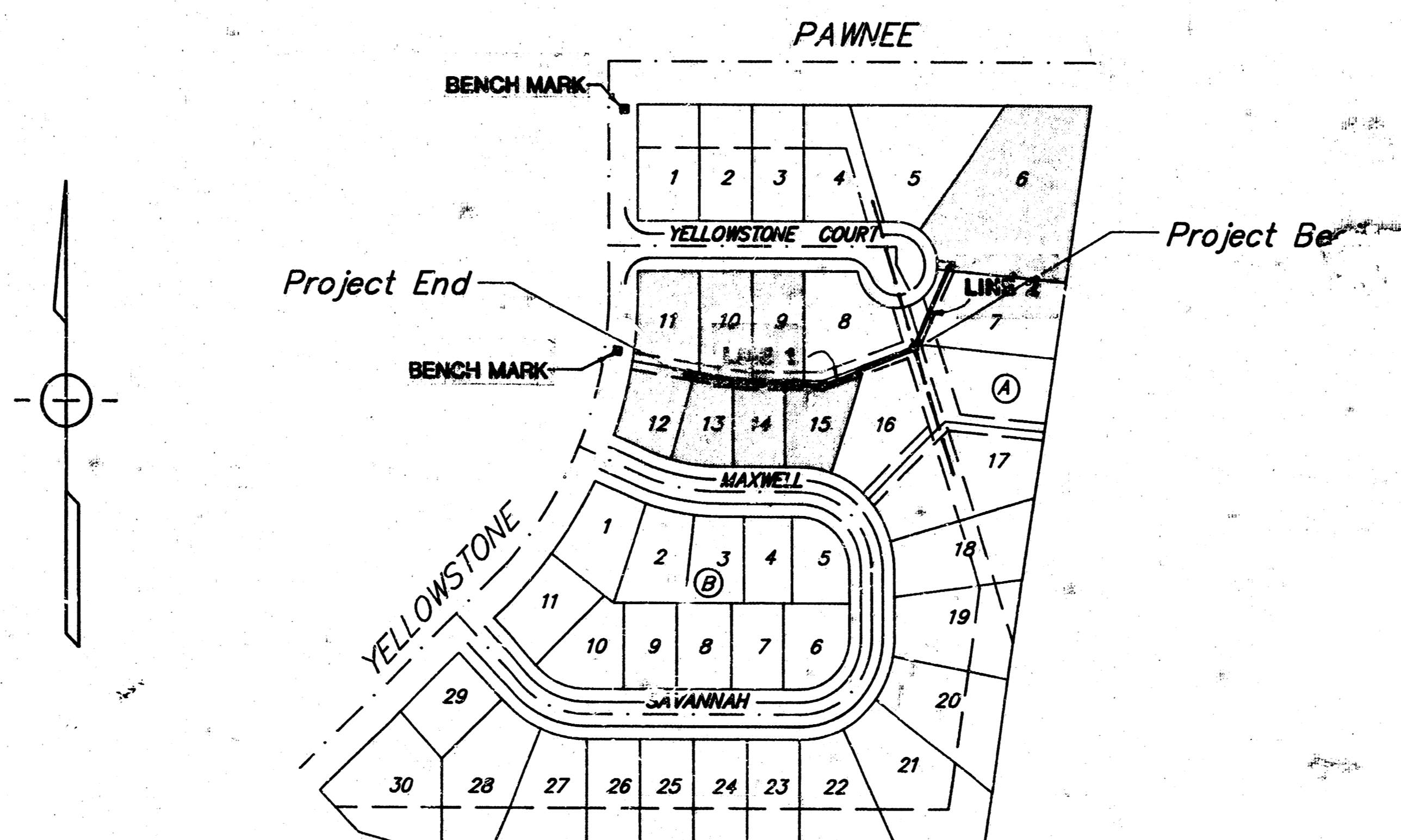
City of Wichita, Kansas - Michael E. Lindebak, City Engineer

Index to the Plans

- 1 COVER SHEET
- 2 PLAN / PROFILE LINES 1 AND 2
- 3 PLAT OF WOODLAND AT THE PARK

General Notes

1. Underground utility service lines and overhead utility pole lines are to be adjusted as necessary by others prior to construction unless the plans specifically call for their adjustment by the Contractor or unless the plans specifically identify a utility to be adjusted by its owner during construction. Existing utilities and their location, as shown on the plans, represent the best information obtainable for design. The Contractor will be required to work around existing utilities within the right-of-way which do not conflict with proposed construction.
2. Trees and shrubs in public right-of-way which are in direct conflict with proposed new construction shall be removed by the Contractor with the Engineer's approval. Trees and shrubs which are not in direct conflict with proposed new construction shall be saved and protected from damage.
3. The Contractor shall be responsible for preserving property irons. The Contractor will be required to re-establish any property irons which are damaged or destroyed by his construction operations. Such irons shall be re-established by a licensed land surveyor in accordance with state laws.

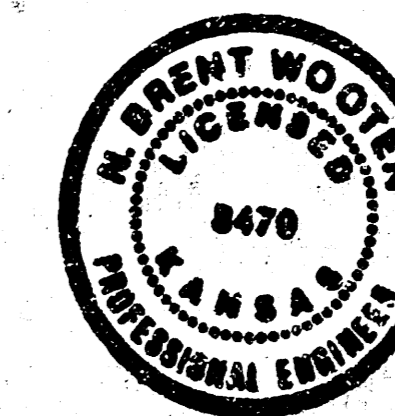


BENCH MARKS

- BENCH MARK:** Square cut in top of curb on the east side of Yellowstone, at the southwest corner of Lot 11, Block A, Woodland at the Park Addition. Elevation = 125.72
- BENCH MARK:** Square cut in top of curb on the east side of Yellowstone, at the northwest corner of Lot 1, Block A, Woodland at the Park Addition. Elevation = 122.46

Benefit District

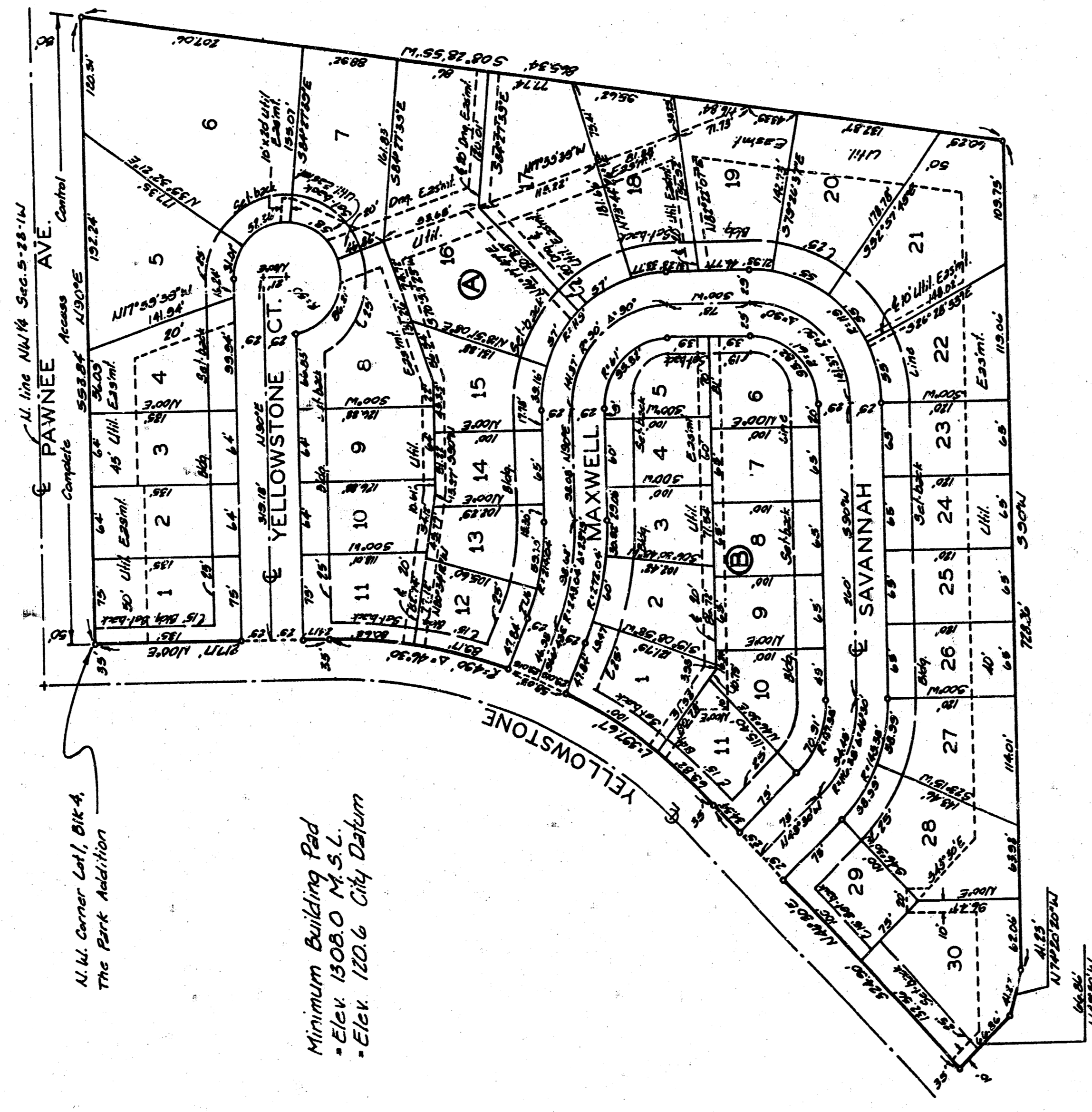
*Build Per Plan
11-88
RDL*



7/15/88 1/3
BAUGHMAN COMPANY P. A.
 SURVEYING & ENGINEERING
 316/282-7271 • 315 ELLIS • WICHITA, KANSAS 67211

WOODLAND AT THE PARK

WICHITA, KANSAS



Minimum Building Pad
 - Elev. 1438.0 M.S.L.
 - Elev. 1426.6 City Datum

BENCH MARK: City Standard Disc
 25 E. 1/4 S. of S.W. 1/4 of N.W. 1/4
 Sec. 5, Twp. 28-S, R. 14-W
 Elevation - 1435.54 City Datum

ON SITE BENCH MARKS: 3 on N.E. edge drive @ S.W. Cor. Lot 30, Blk. A
 Elevation - 1436.66 City Datum

"1" Cut top of curb E. Side Yellowstone @ N.W. Cor. Lot 1, Blk. A
 Elevation - 1426.76 City Datum

State of Kansas) s.s. J.G. Baughman Company, P.A. Surveyors
 Sedwick County) and state do hereby certify that we have
 in and said county and state do hereby certify that we have
 surveyed and platted "WOODLAND AT THE PARK" Wichita,
 Kansas, and that the accompanying plat is a true and cor-
 rect exhibit of the property surveyed, described as and
 being a replat of Lot 1, Block 4, The Park an addition to
 Wichita, Sedwick County, Kansas. Being situated in the
 N.W. 1/4 of Sec. 5, Twp. 28-S, R. 14-W of the 6th P.M., Sedwick
 County, Kansas.

Date _____

 Baughman Company, P.A.

 Mark A. Barry Surveyor

We, the undersigned, have caused the land described in the surveyors certificate to be platted into lots, blocks and streets to be known as "WOODLAND AT THE PARK", Wichita, Kansas. The utility easements are hereby granted, as indicated for the construction and maintenance of all public utilities. The drainage easements are hereby granted as indicated for drainage purposes. The streets are hereby dedicated to and for the use of the public. All abutters rights of access to or from Raines Ave. over and across the north line of Lots 1, 2, 3, 4, 5 and 6, Block 4, are hereby granted to the appropriate governing body.

Date _____

 Geneva J. Lewis
 State of Kansas) s.s. The foregoing instrument acknowledged
 Sedwick County) before me this _____ day of _____, 198____, by
 John S. Lewis and Geneva J. Lewis, his wife.
 My Appl. Exp. _____

 Notary Public

This plat of "WOODLAND AT THE PARK",
 Wichita, Kansas, has been submitted to and approved by the
 Wichita-Sedwick County Metropolitan Area Planning Commission,
 Wichita, Kansas.
 Dated this _____ day of _____, 198____

 Chairman

 Secretary

This plat, approved and all obligations
 shown hereon accepted by the City Council of the City of Wichita,
 Kansas, this _____ day of _____, 198____

_____ Mayor
 _____ Deputy City Clerk

 Entered on Kansas record this _____
 day of _____, 198____

 County Clerk

State of Kansas) s.s. This is to certify that this plat has been
 Sedwick County) filed for record in the office of the Register of Deeds this
 _____ day of _____, 198____, at
 o'clock _____ M., and is duly recorded.

 Register of Deeds

 Deputy