

SANITARY SEWER LAT. 278, SOUTHWEST INTERCEPTOR

CITY OF WICHITA, KANSAS
M.E. LINDEBAK CITY ENGINEER

IMPROVEMENT DISTRICT DESCRIPTION

Lots 1 through 7 inclusive, and Lots 18 through 22 inclusive, Block A, Sunridge Addition.

Lots 9 through 20 inclusive, Block A, Teal Brook Estates.

CITY PROJECT NO. 468 - 76 - 245 - 81930 - 000-000-001
INDEX NO. 608091

MAY, 1989

NOTES:

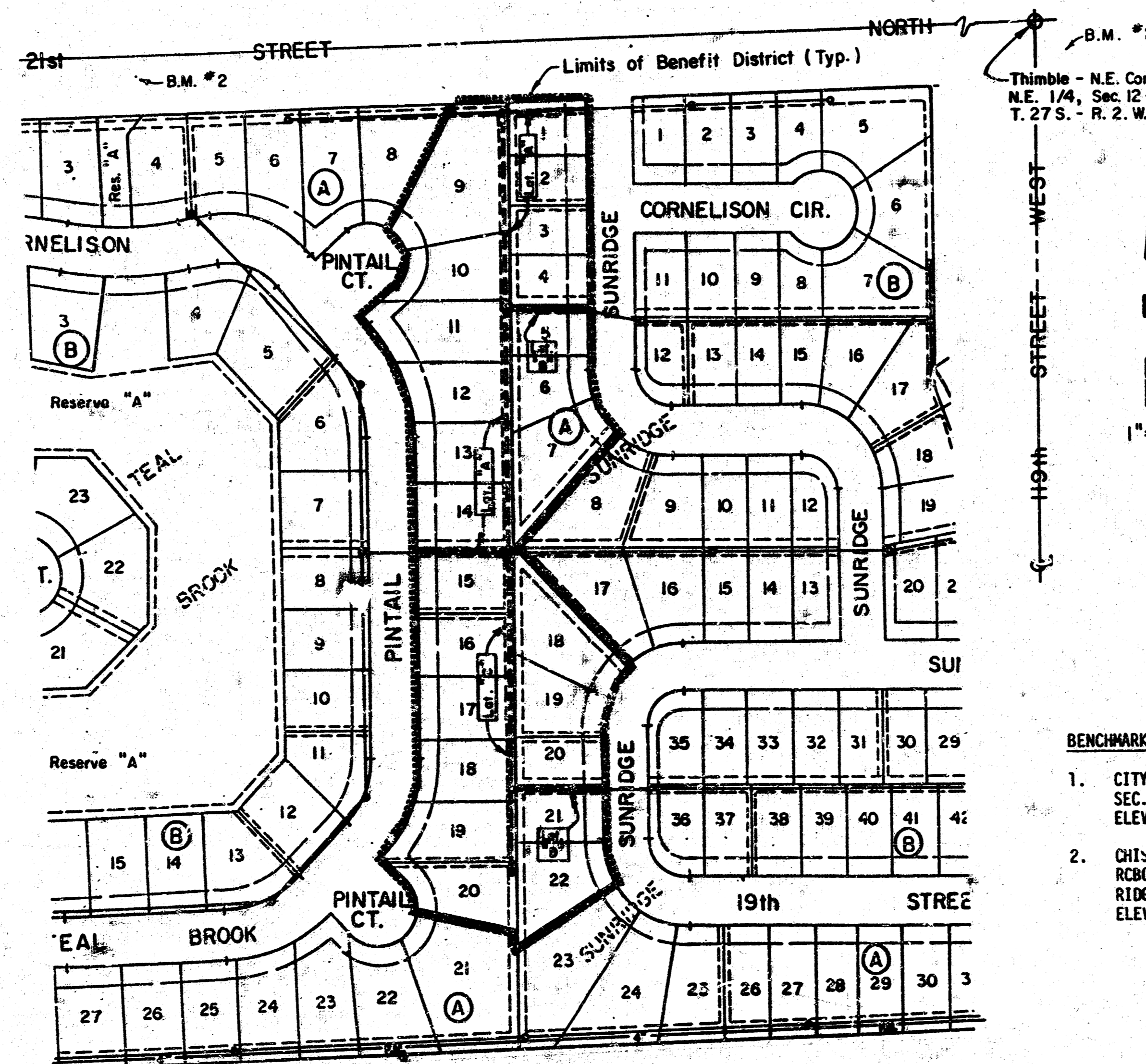
- CONTRACTOR WILL BE REQUIRED TO PROVIDE A MINIMUM ADVANCE NOTICE OF TWENTY-FOUR (24) HOURS TO UTILITY COMPANIES PRIOR TO STARTING ANY EXCAVATION AS FOLLOWS:

KANSAS ONE-CALL 687-2470

THE CONTRACTOR MUST NOTIFY THE FOLLOWING IN CASE OF AN EMERGENCY:

CABLEVISION	262-4270 OR 263-2061
K.P. & L. GAS SERVICE COMPANY	263-7511
KANSAS GAS & ELECTRIC	264-1141
ARKLA GAS COMPANY	942-8350 OR 263-8161
SOUTHWESTERN BELL TELEPHONE COMPANY	571-2611
CITY OF WICHITA WATER DEPARTMENT	3-4908
CITY OF WICHITA SEWER MAINTENANCE	68-4071

- RUBBLE FROM THE REMOVAL OF MISCELLANEOUS STRUCTURES AND EXCESS EXCAVATION WHICH IS TO BE WASTED SHALL BE DISPOSED OF ON SITES TO BE PROVIDED BY THE CONTRACTOR. THESE SITES SHALL BE APPROVED BY THE ENGINEER AS TO SUITABILITY, APPEARANCE AND SITE LOCATION. LOCATIONS THAT, IN THE OPINION OF THE ENGINEER, WILL LEAVE AN UNSIGHTLY APPEARANCE WILL NOT BE APPROVED.
- THE CONTRACTOR SHALL GIVE ALL PROPERTY OWNERS AND/OR TENANTS OF DEVELOPED PROPERTY ABUTTING THE PROJECT A MINIMUM OF TEN (10) DAYS ADVANCE NOTICE PRIOR TO THE START OF CONSTRUCTION.
- THE CONTRACTOR SHALL BE RESPONSIBLE FOR PRESERVING PROPERTY IRONS. THE CONTRACTOR WILL BE REQUIRED TO RE-ESTABLISH ANY PROPERTY IRONS WHICH ARE DAMAGED OR DESTROYED BY HIS CONSTRUCTION OPERATIONS. SUCH IRONS SHALL BE RE-ESTABLISHED BY A LICENSED LAND SURVEYOR IN ACCORDANCE WITH STATE LAWS.
- UNLESS OTHERWISE SPECIFIED ON THE PLANS, MANHOLES MAY BE TYPE "P" OR "C". MANHOLES SHALL BE CONSTRUCTED IN ACCORDANCE WITH THE STANDARD SPECIFICATIONS AND THE STANDARD DETAIL DRAWINGS.
- TRAFFIC WILL NOT BE AFFECTED IN THIS AREA OF CONSTRUCTION.
- CONTRACTOR SHALL PROVIDE POSITIVE DRAINAGE AWAY FROM ALL MANHOLE COVERS.

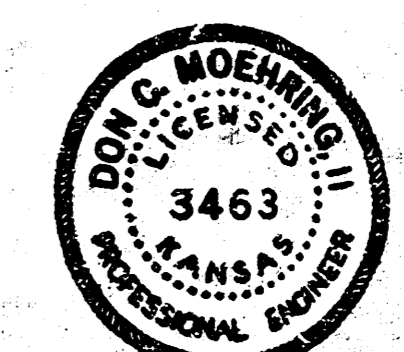


INDEX

Sheet No.	Description
1	Cover Sheet
2	Plan & Profile - Lat. "A"
3	Plan & Profile - Lats. "B", "C", "D"

- BENCHMARKS: (CITY DATUM)
- CITY DISC, 79' SOUTH & 46' EAST OF NE CORNER SEC. 12, T27S, R2W. ELEV. = 172.08
 - CHISELED "C" ON CTR. SOUTH HURGUARD, 7' X 3' RCBC UNDER 21ST N. 470' WEST OF NW COR., SUN-RIDGE ADDITION. ELEV. = 164.08

*Best per plan
RAL
1-90*



MOEHRING & ASSOCIATES
CONSULTING ENGINEERS
WICHITA

1 of 3

FILMED FROM THE BEST AVAILABLE COPY

