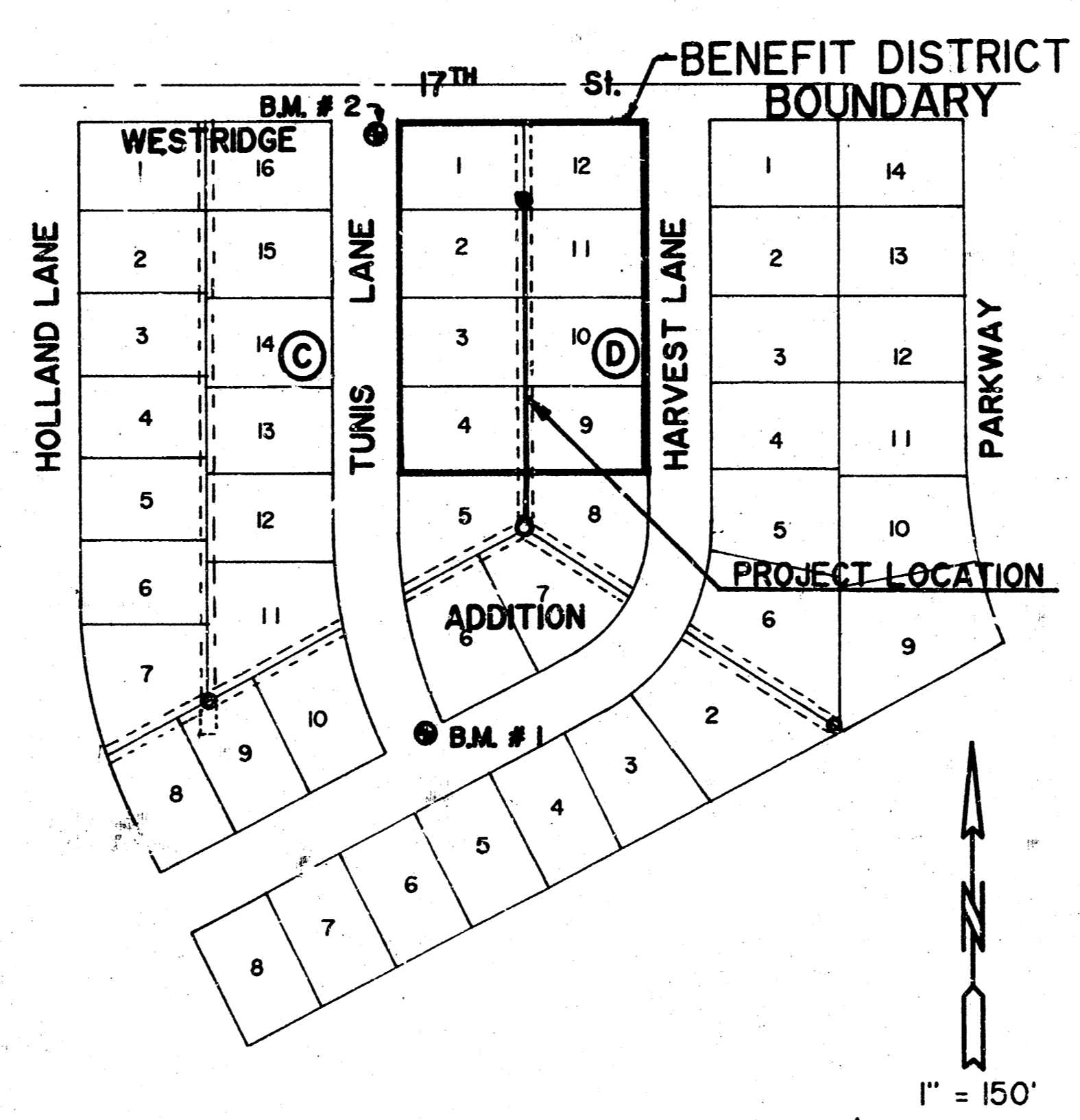


CITY OF WICHITA, KANSAS
SANITARY SEWER EXTENSION
TO SERVE
LOTS 1 THROUGH 4 INCLUSIVE AND LOTS 9 THROUGH 12 INCLUSIVE
BLOCK D, WESTRIDGE VILLAGE ADDITION
LATERAL 280, SOUTHWEST INTERCEPTOR
PROJECT NO.: 468-76-245-81933-000-000-001

INDEX #: 607663

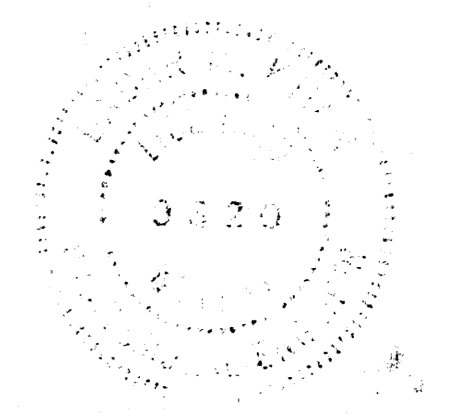


LOCATION MAP

MICHAEL E. LINDEBAK, P.E., CITY ENGINEER

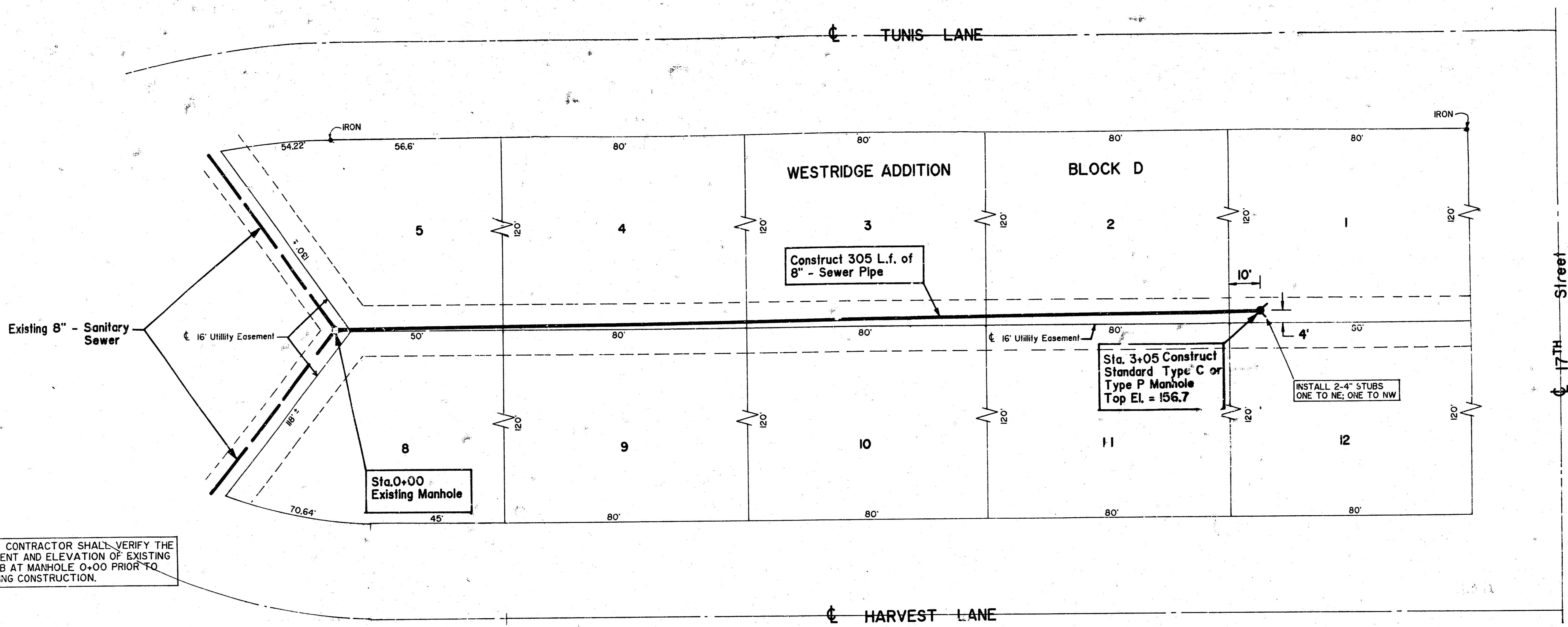
INDEX :
 SHEET 1 OF 2 TITLE
 SHEET 2 OF 2 PLAN & PROFILE

- GENERAL NOTES :**
- The Contractor shall be responsible for preserving property irons. The Contractor will be required to re-establish any property irons which are damaged or destroyed by his construction operations. Such irons shall be re-established by a licensed land surveyor or a licensed professional engineer in accordance with state laws.
 - All construction shall be in accordance with City of Wichita, Kansas Standard Specifications for Sanitary Sewers.
 - Bench Marks :
 - # 1 - "d" Cut on end return east side of Tunis Lane NE^c intersection of Tunis & Harvest Lane. ELEV. = 156.87
 - # 2 - "d" Cut on end return east side of Tunis Lane SE^c intersection of Tunis & 17th Street. ELEV. = 156.76



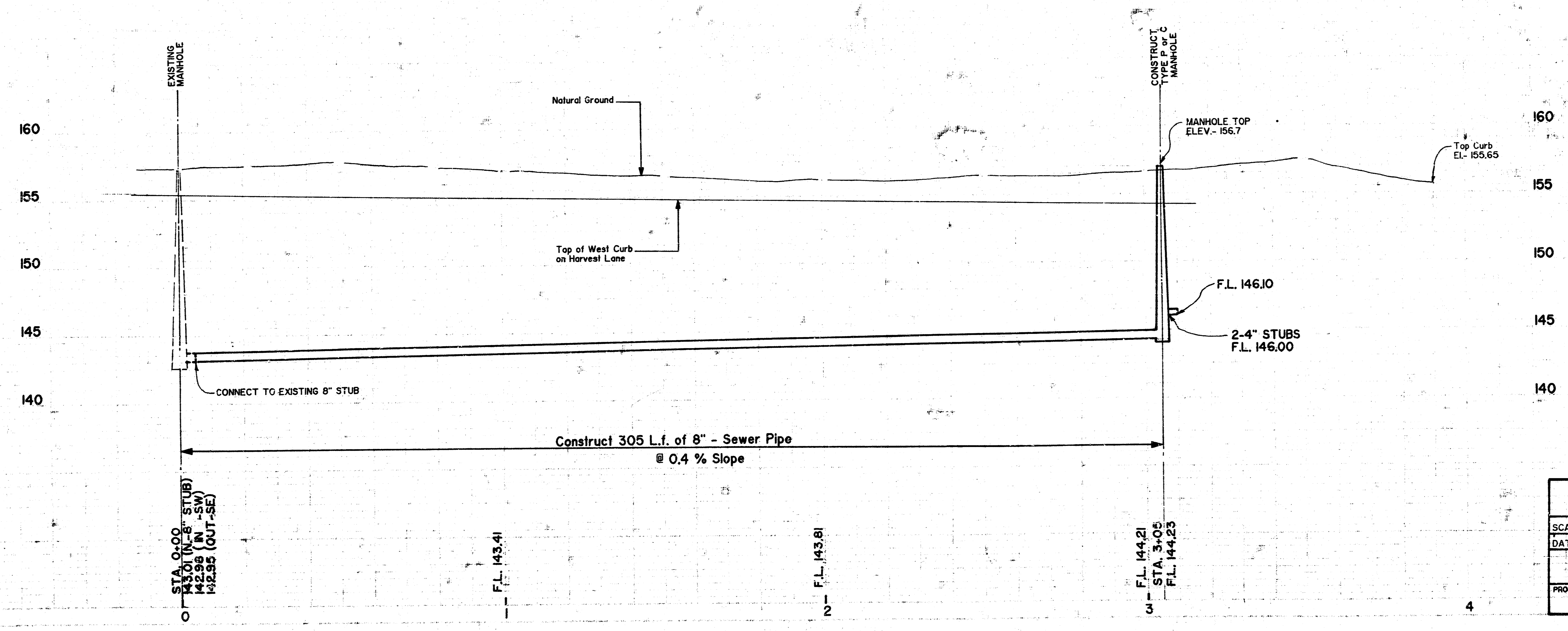
*BUILT PER PLAN
RPL
5-89*

MUNICIPAL ENGINEERS Civil Engineers & Land Surveyors 264 Laura, Suite 201 Wichita, Kansas 67211	SCALE: AS SHOWN	APPROVED BY:	DRAWN BY: M.W.
	DATE: 2 - 89		REVISED
			DRAWING NUMBER



NOTE: CONTRACTOR SHALL VERIFY THE ALIGNMENT AND ELEVATION OF EXISTING 8" STUB AT MANHOLE 0+00 PRIOR TO BEGINNING CONSTRUCTION.

SCALE: PLAN - 1" = 20'
 PROFILE - 1" = 20' (H)
 1" = 5' (V)



MUNICIPAL ENGINEERS
 Civil Engineers & Land Surveyors
 204 Laura, Suite 201
 Wichita, Kansas 67211

PLAN & PROFILE SHEET		
SCALE: AS SHOWN	APPROVED BY: B.K.	DRAWN BY: M.W.
DATE: 2 - 89		REVISED:
LATERAL 280, S.W. INTERCEPTOR WESTRIDGE VILLAGE BLK D		
PROJECT NUMBER: 468-76-245-8933-000-000-001	DRAWING NUMBER: 2 of 2	

14 10 4 5