

SANITARY SEWER LATERAL 322, SOUTHWEST INTERCEPTOR

TO SERVE A PART OF

WHEATLAND ADDITION SEDGWICK COUNTY, KANSAS

CITY OF WICHITA, KANSAS
M.E. LINDEBAK CITY ENGINEER

CITY PROJECT NO. 468-76-245-82292-000-000-001
INDEX NO. 7415 53

IMPROVEMENT DISTRICT DESCRIPTION

LOTS 1 THROUGH 36 INCLUSIVE, BLOCK "A"
LOTS 1 THROUGH 18 INCLUSIVE, BLOCK "B"
WHEATLAND ADDITION

NOTES:

- CONTRACTOR WILL BE REQUIRED TO PROVIDE A MINIMUM ADVANCE NOTICE OF TWENTY-FOUR (24) HOURS TO UTILITY COMPANIES PRIOR TO STARTING ANY EXCAVATION AS FOLLOWS:

KANSAS ONE-CALL 687-2470

THE CONTRACTOR MUST NOTIFY THE FOLLOWING IN CASE OF AN EMERGENCY:

CABLEVISION	262-4270 OR 263-2061
K.P. & L. GAS SERVICE COMPANY	263-7511
KANSAS GAS & ELECTRIC	264-1141
ARKLA GAS COMPANY	942-8350 OR 263-8161
SOUTHWESTERN BELL TELEPHONE COMPANY	1-571-2611
CITY OF WICHITA WATER DEPARTMENT	268-4908
CITY OF WICHITA SEWER MAINTENANCE	268-4071

- RUBBLE FROM THE REMOVAL OF MISCELLANEOUS STRUCTURES AND EXCAVATION WHICH IS TO BE WASTED SHALL BE DISPOSED OF ON SITES TO BE PROVIDED BY THE CONTRACTOR. THESE SITES SHALL BE APPROVED BY THE ENGINEER AS TO SUITABILITY, APPEARANCE AND SITE LOCATION. LOCATIONS THAT, IN THE OPINION OF THE ENGINEER, WILL LEAVE AN UNSIGHTLY APPEARANCE WILL NOT BE APPROVED.

ALL DISPOSAL SITES MUST BE APPROVED BY THE KANSAS DEPARTMENT OF HEALTH AND ENVIRONMENT. MATERIAL EITHER STOCKPILED OR DISPOSED OF IN A FLOOD PLAIN WOULD REQUIRE A KANSAS STATE BOARD OF AGRICULTURE PERMIT. ANY MATERIAL DUMPED IN WATERS OF THE UNITED STATES OR WETLANDS IS SUBJECT TO U.S. CORPS. OF ENGINEER PERMITTING REGULATIONS. ANY MATERIAL BURIED OR STOCKPILED BEYOND APPROVED CONSTRUCTION LIMITS WOULD REQUIRE ADDITIONAL ARCHAEOLOGICAL INVESTIGATIONS UNLESS BURIED IN A PREVIOUSLY APPROVED BORROW LOCATION.

- THE CONTRACTOR SHALL GIVE ALL PROPERTY OWNERS AND/OR TENANTS OF DEVELOPED PROPERTY ADJACENT TO THE CONSTRUCTION OF THIS PROJECT A MINIMUM OF TEN (10) DAYS ADVANCE NOTICE PRIOR TO START OF CONSTRUCTION.

- THE CONTRACTOR SHALL BE RESPONSIBLE FOR PRESERVING PROPERTY IRONS. THE CONTRACTOR SHALL BE REQUIRED TO RE-ESTABLISH ANY PROPERTY IRONS WHICH ARE DAMAGED OR DESTROYED BY HIS CONSTRUCTION OPERATIONS. SUCH IRONS SHALL BE RE-ESTABLISHED BY A LICENSED LAND SURVEYOR IN ACCORDANCE WITH STATE LAWS.

- UNLESS OTHERWISE SPECIFIED ON THE PLANS, MANHOLES SHALL BE CONSTRUCTED IN ACCORDANCE WITH THE STANDARD SPECIFICATIONS AND THE STANDARD DETAIL DRAWINGS.

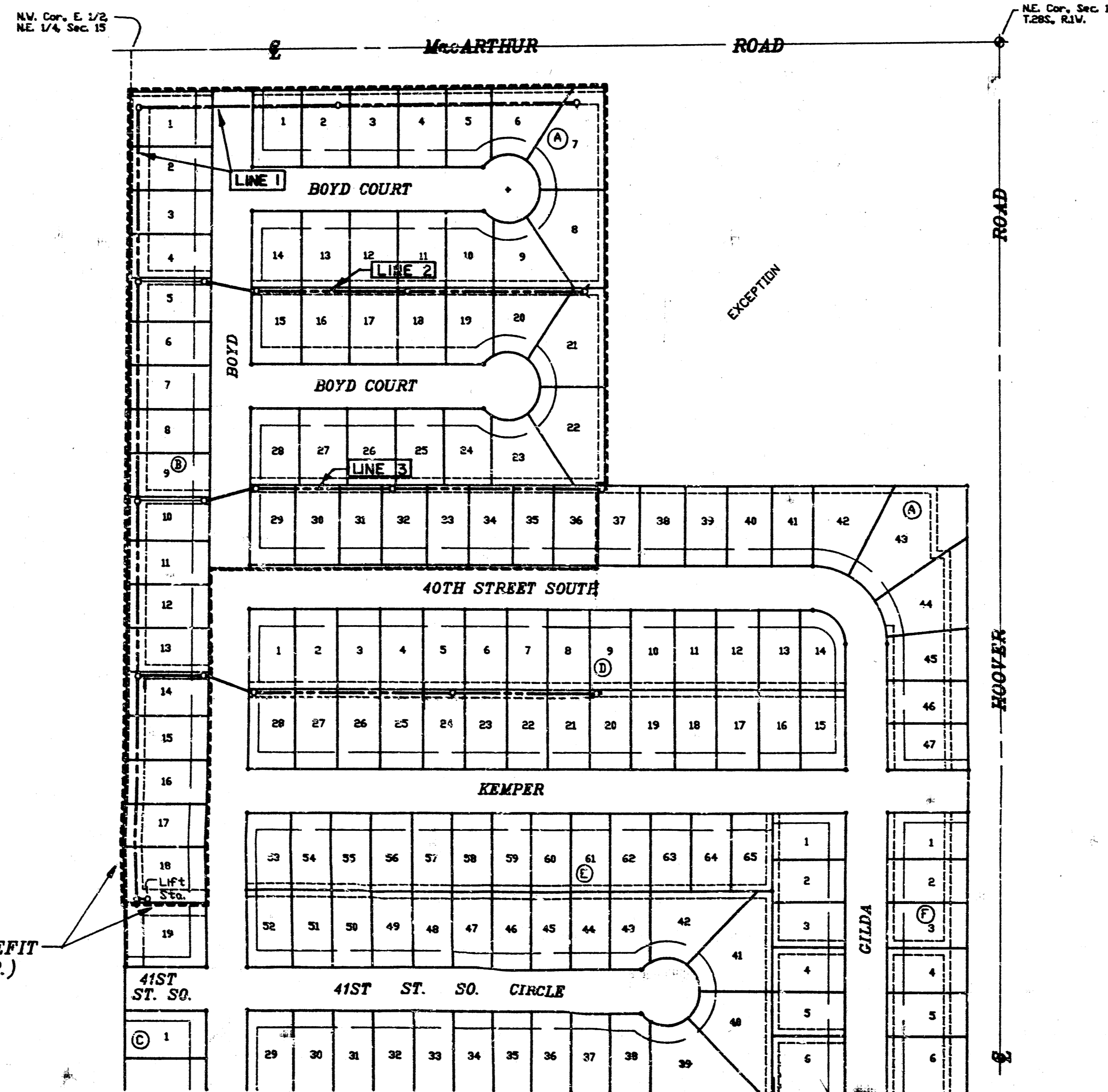
- TRAFFIC WILL NOT BE AFFECTED IN THIS AREA OF CONSTRUCTION.

- CONTRACTOR SHALL PROVIDE POSITIVE DRAINAGE AWAY FROM ALL MANHOLE COVERS.

- CONTRACTOR SHALL GRADE THE SANITARY SEWER ALIGNMENT TO THE PROFILE AND ELEVATION SHOWN ON THE EASEMENT GRADING PLAN. ALL COSTS FOR GRADING SHALL BE PAID AS SANITARY EASEMENT GRADING.

- CONTRACTOR TO INSTALL GRAVITY SEWER ALONG THE WEST LINE OF LOTS 1 THRU 18 INCLUSIVE, BLOCK B, WHEATLAND ADDITION, PRIOR TO INSTALLATION OF FORCE MAIN.

May 1993



INDEX

- Cover Sheet
- Plan & Profile - Line 1
- Plan & Profile - Line 2
- Plan & Profile - Line 3
- Easement Grading Plan / Plat

BENCHMARKS

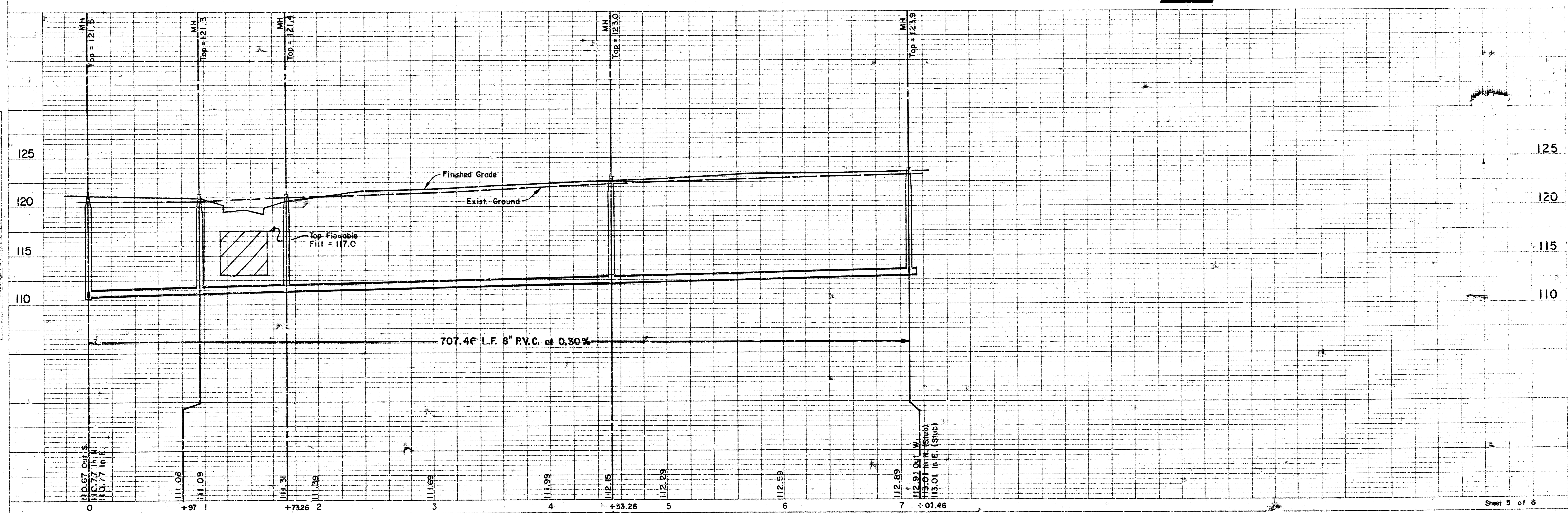
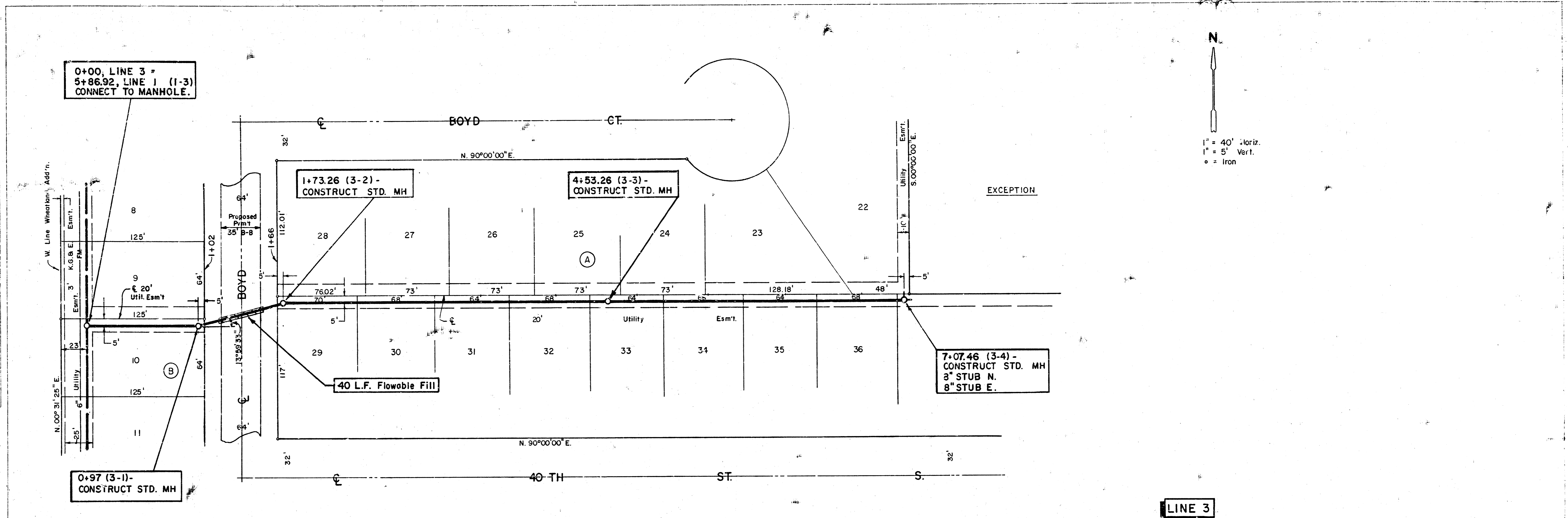
- R.R. Spike in Utility Pole at NW Cor. Wheatland Addition
Elev. = 124.06 City Datum
- "□" on Top of W. Curb Eisenhower
60' N. of C.L. MacArthur
Elev. = 123.46 City Datum
- Top of Iron in Thimble at C.L. Hoover & MacArthur
Elev. = 122.45 City Datum

MOHRING & ASSOCIATES
CONSULTING ENGINEERS
WICHITA



DATE: _____
 BY: _____
 CHECKED: _____
 APPROVED: _____
 PROJECT: _____
 SHEET: _____

DATE: _____
 BY: _____
 CHECKED: _____
 APPROVED: _____
 PROJECT: _____
 SHEET: _____



PLAN
 1" = 40' Horiz.
 1" = 5' Vert.
 O = Iron

PROF.
 1" = 40' Horiz.
 1" = 5' Vert.
 O = Iron

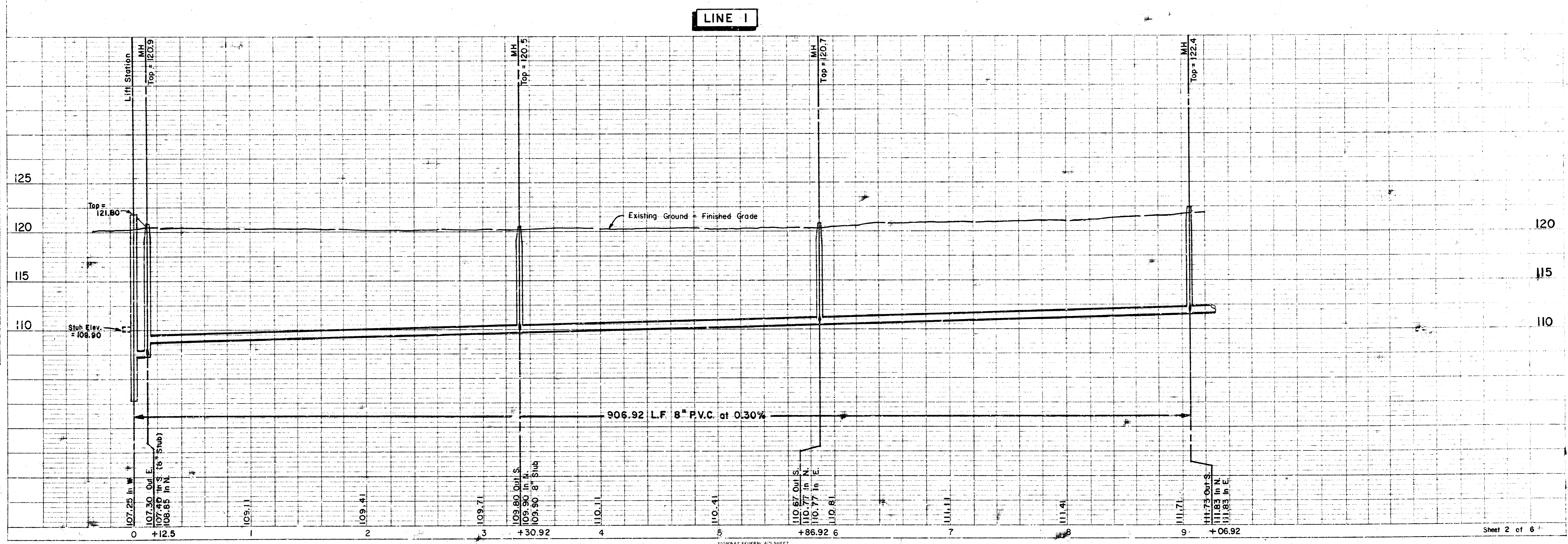
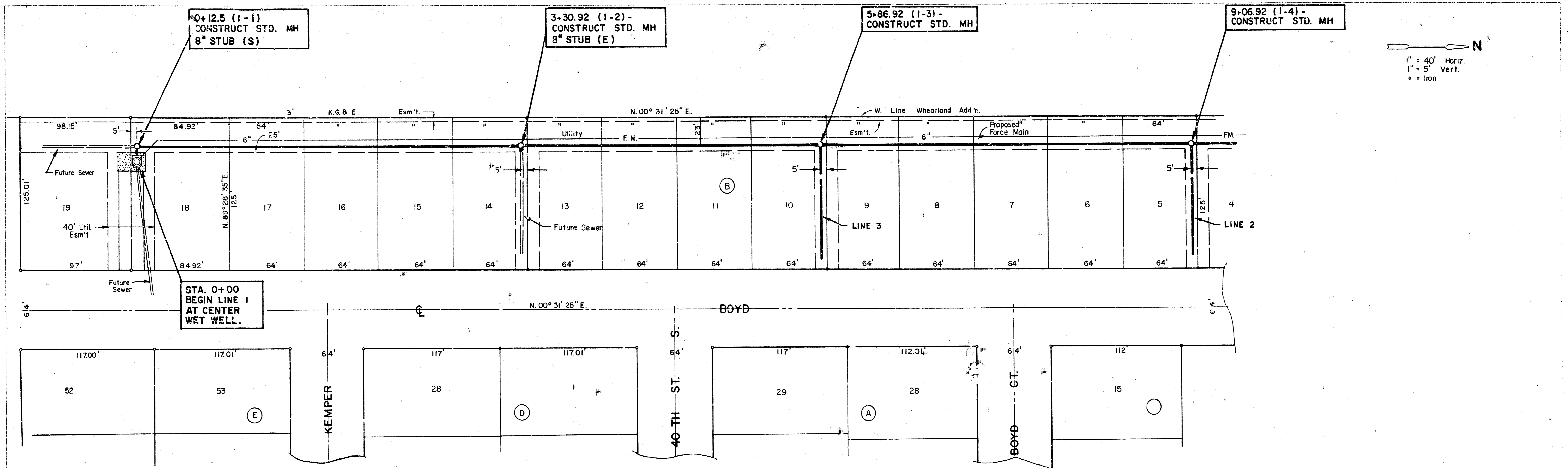
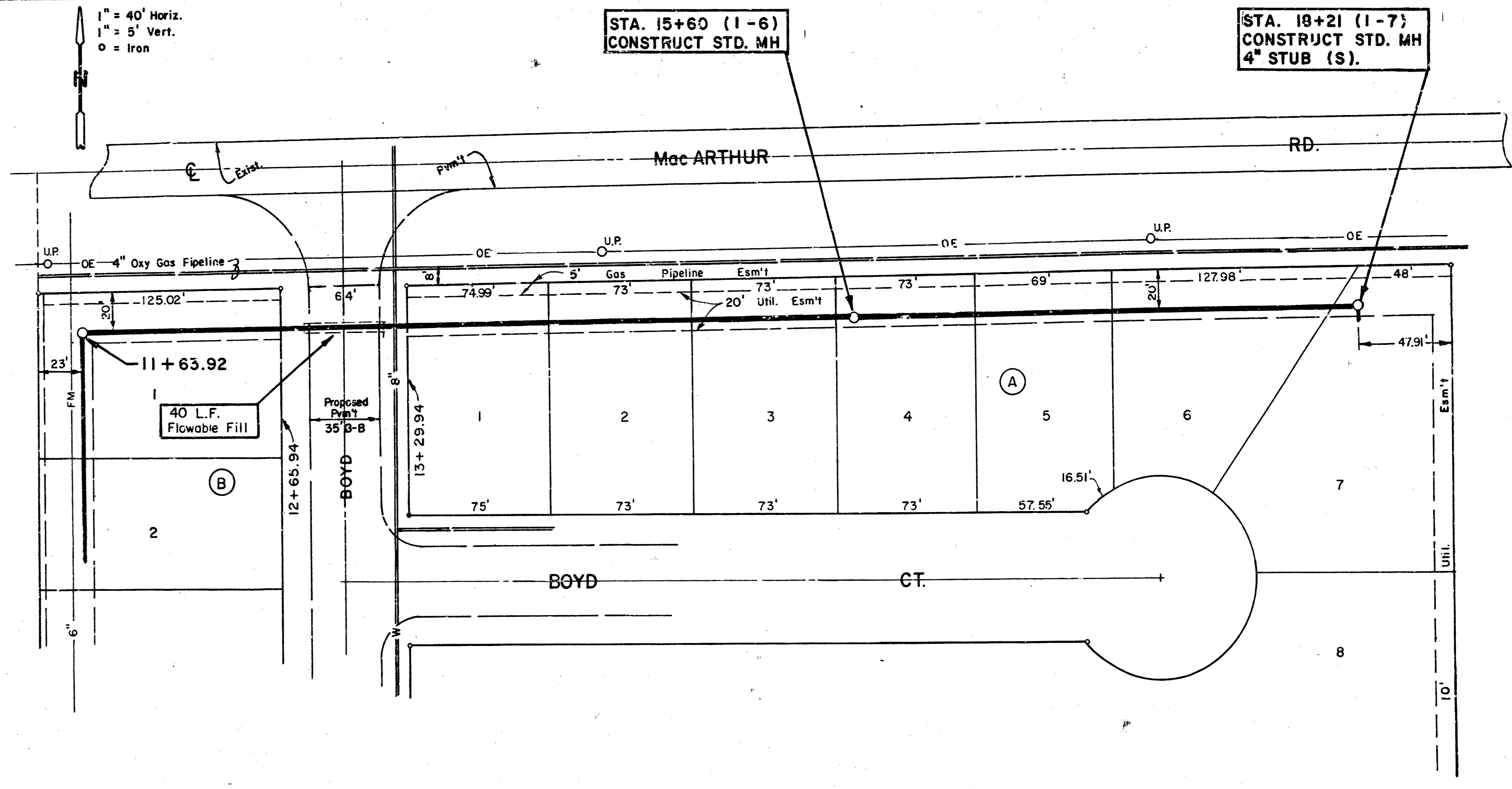
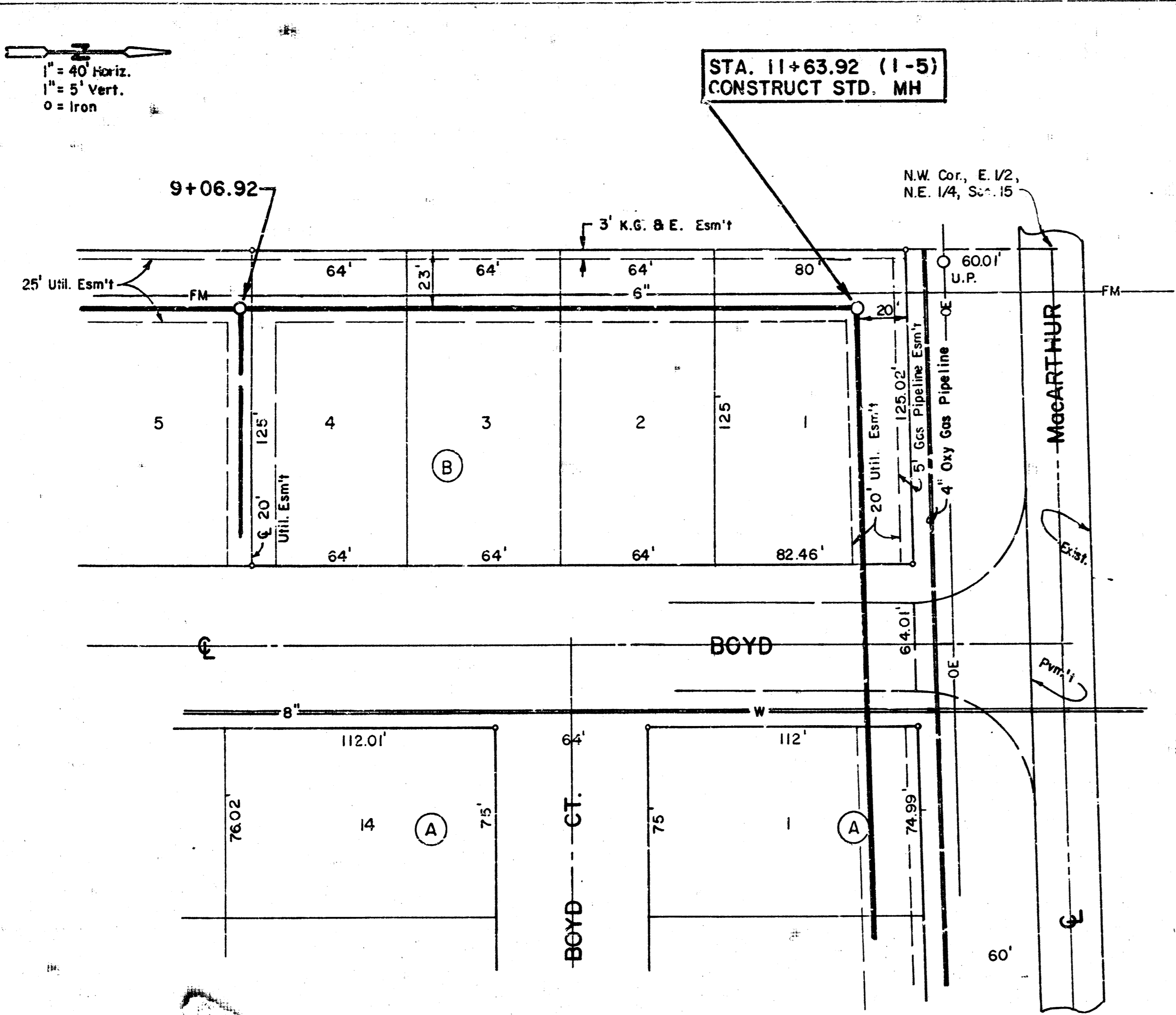


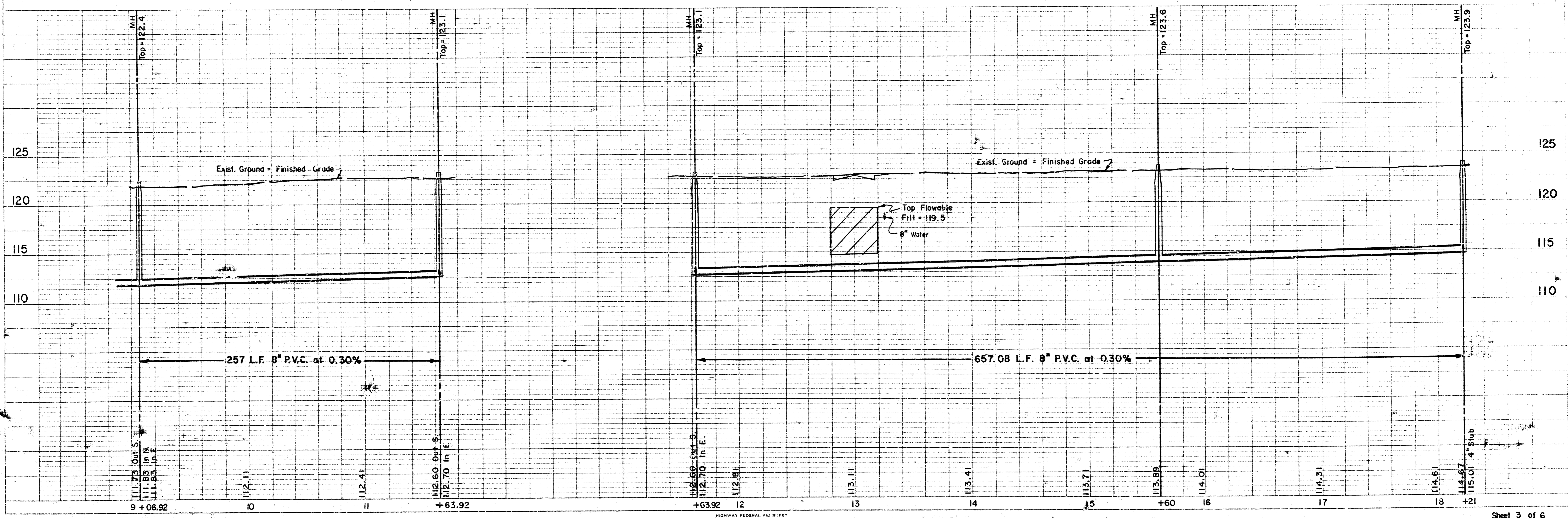
PLATE 1-SINGLE PLAN AND PROFILE-FULL LINE

MOHRING & ASSOCIATES CONSULTING ENGINEERS

Sheet 2 of 6



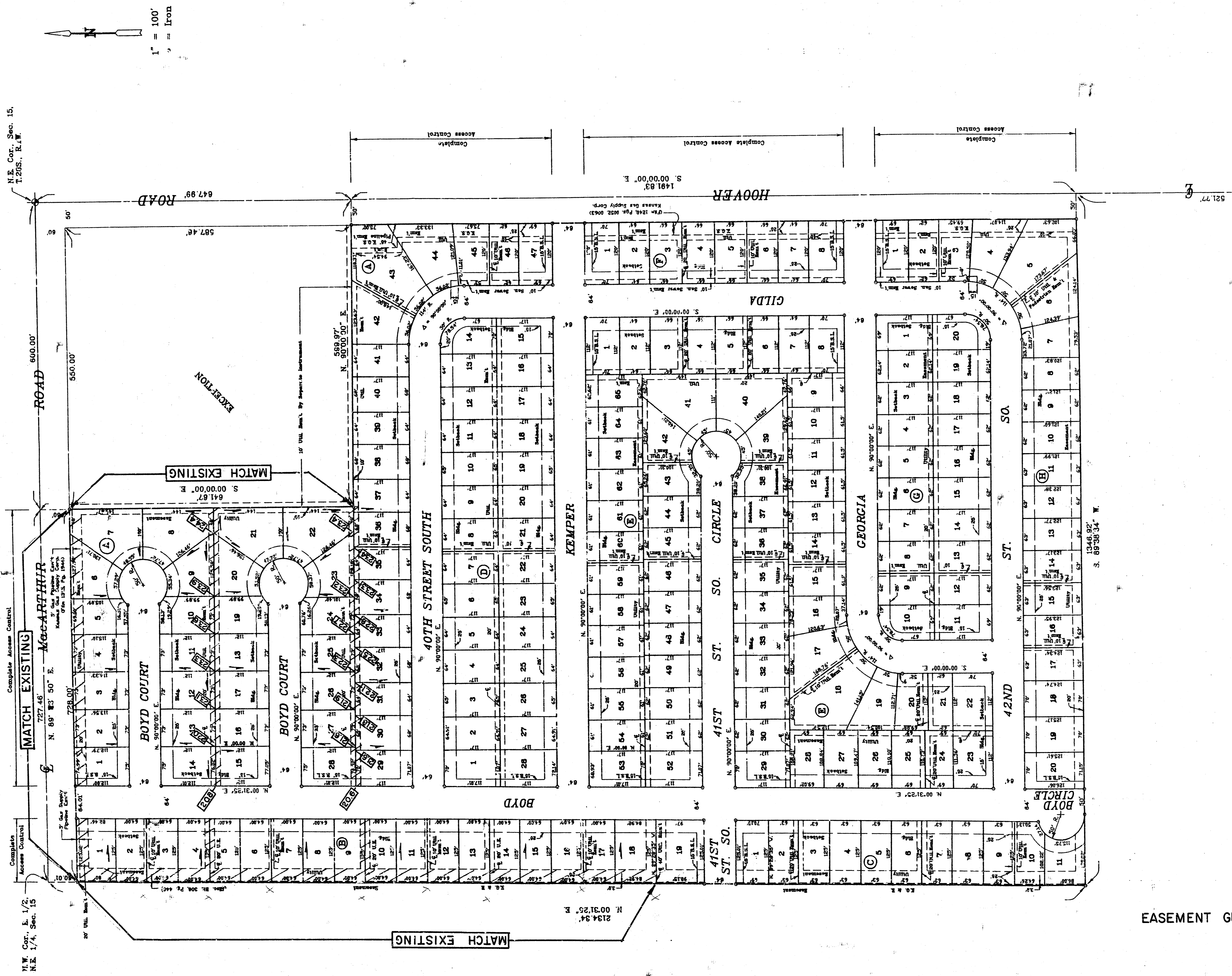
LINE 1



PLAN
 NOTE: EOOD: ASSIGNMENT CHECKED
 BY: W.M. GREGG
 No. 1

PROFILE
 NOTE: EOOD: ASSIGNMENT CHECKED
 BY: W.M. GREGG
 No. 1

WHEATLAND ADDITION
 SEDGWICK COUNTY, KANSAS



EASEMENT GRADING PLAN / PLAT