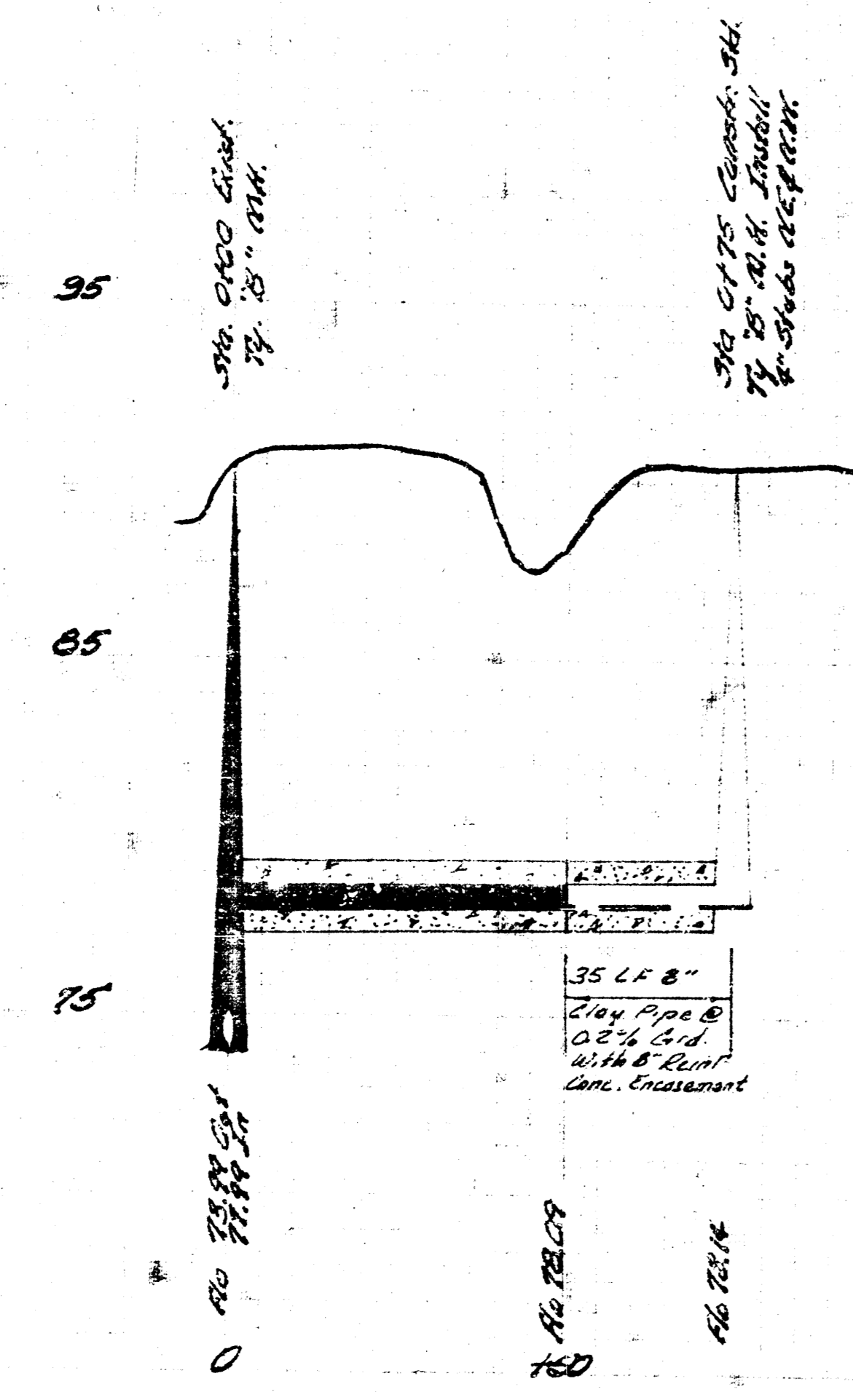
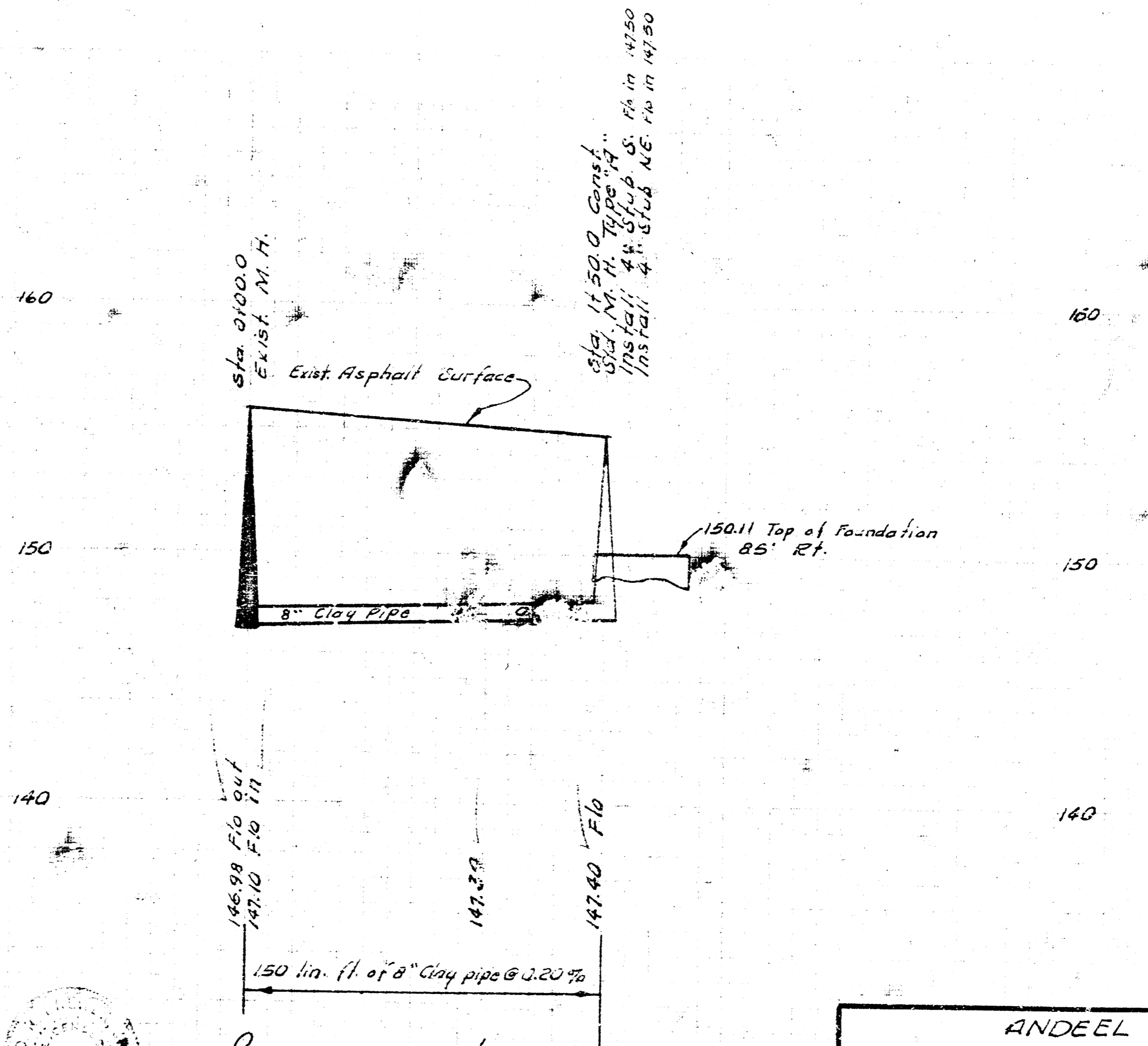
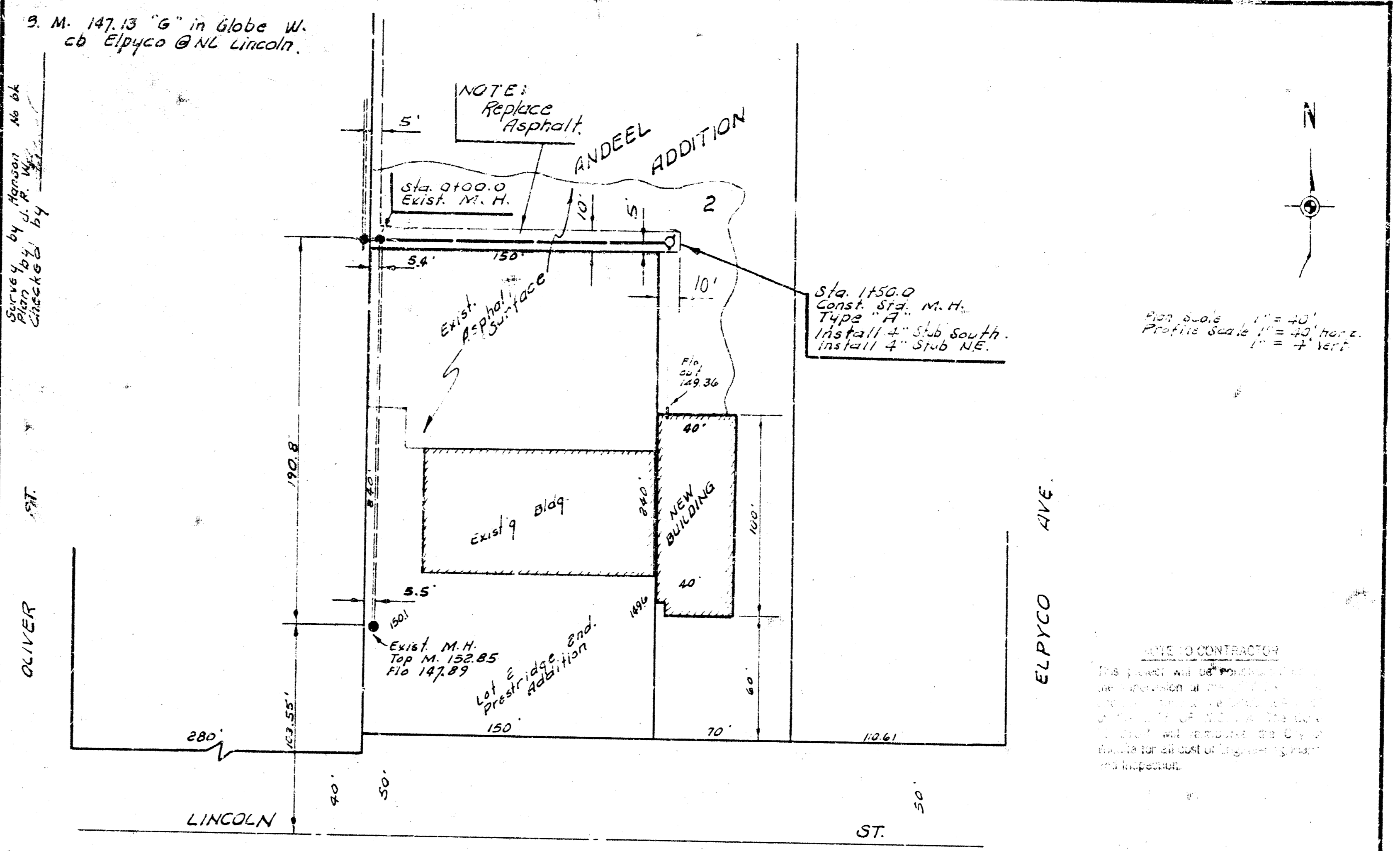


B.M. 9098 Nail in 2nd RR West of
MacArthur Auto Salvage



LAT. 2, SUB. 1, SW. SEWER
CITY OF WICHITA, KANSAS
B. E. SMITH CITY ENGINEER
DATE JULY 1970 PROJ. C29-17



ANDEEL ADDITION
SANITARY SEWER
NW OF ELPYCO AVE. AND LINCOLN ST.
CITY OF WICHITA, KANSAS
B. E. SMITH CITY ENGINEER
JULY 1970