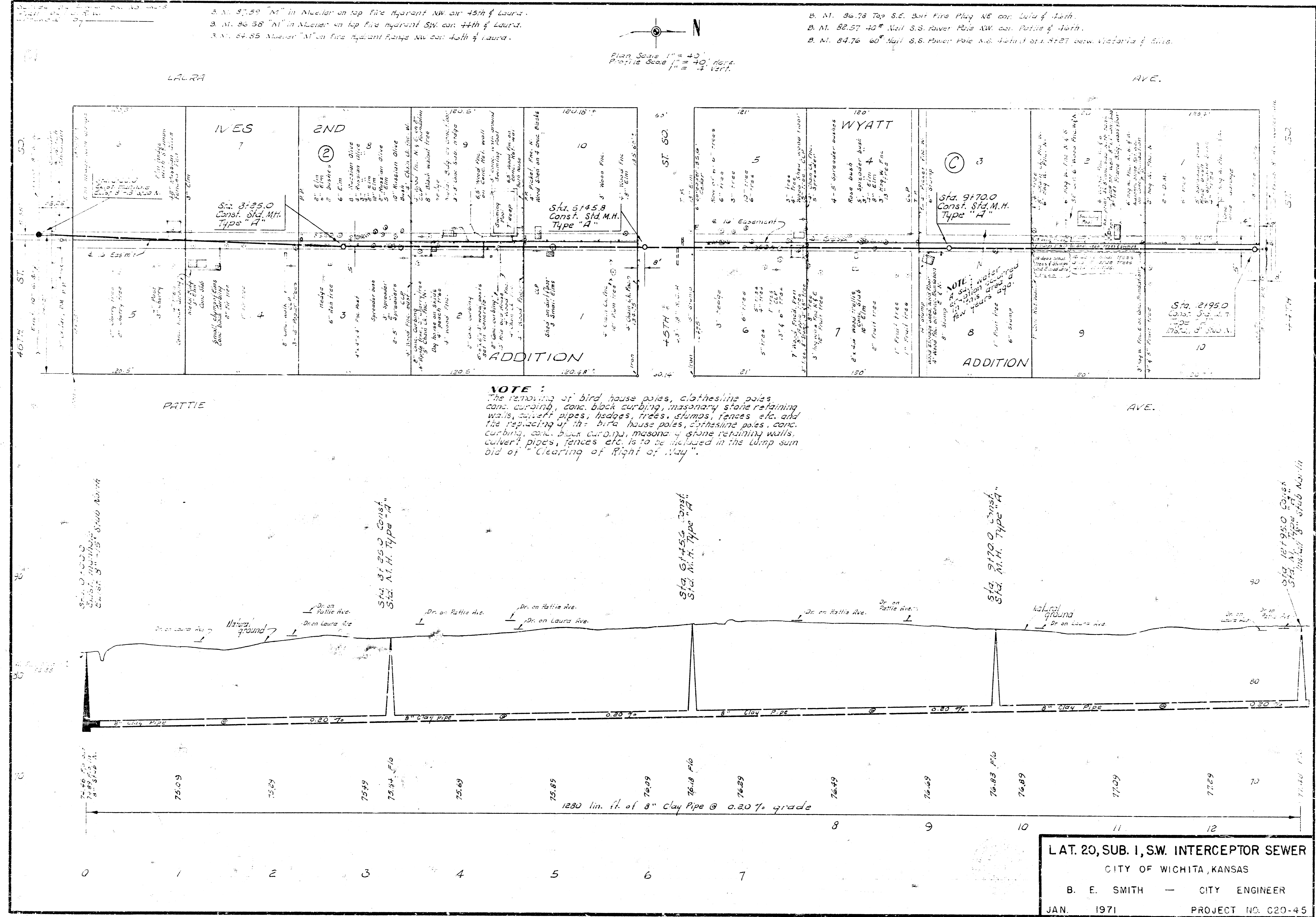
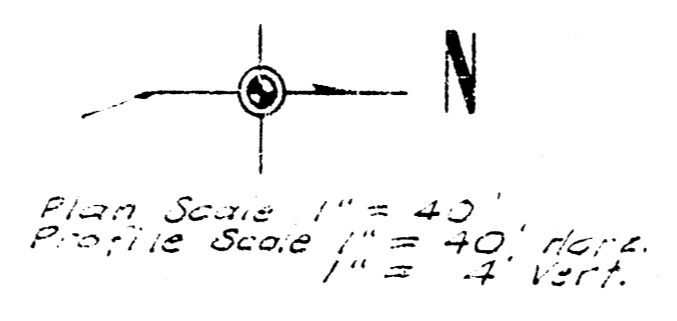


3. N. 87.59' "A" in Nucleon on top fire hydrant NW cor. 45th & Laura.
 3. N. 86.58' "A" in Nucleon on top fire hydrant SW cor. 44th & Laura.
 3. N. 84.85' "A" in Nucleon on top fire hydrant NW cor. 44th & Laura.

B. N. 86.78' Top S.E. but fire plug NE cor. Laura & 44th.
 B. N. 82.57' 40" Nail S.S. Power Pole NW cor. Pattie & 44th.
 B. N. 84.76' 60" Nail S.S. Power Pole N.E. 44th & 1st St. NW cor. Victoria & 44th.



NOTE:
 The removing of bird house poles, clothesline poles, conc. curbing, conc. block curbing, masonry stone retaining walls, culvert pipes, hedges, trees, stumps, fences, etc. and the replacing of the bird house poles, clothesline poles, conc. curbing, conc. block curbing, masonry stone retaining walls, culvert pipes, fences, etc. is to be included in the lump sum bid of "Clearing of Right of Way".

LAT. 20, SUB. 1, S.W. INTERCEPT SEWER
 CITY OF WICHITA, KANSAS
 B. E. SMITH — CITY ENGINEER
 JAN. 1971 PROJECT NO. C20-45