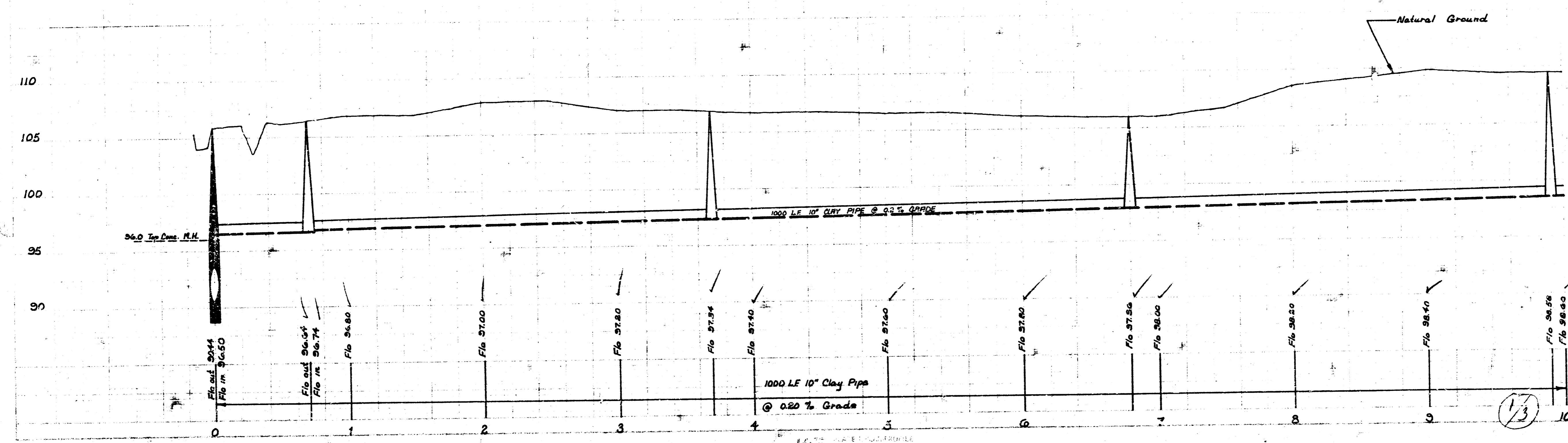
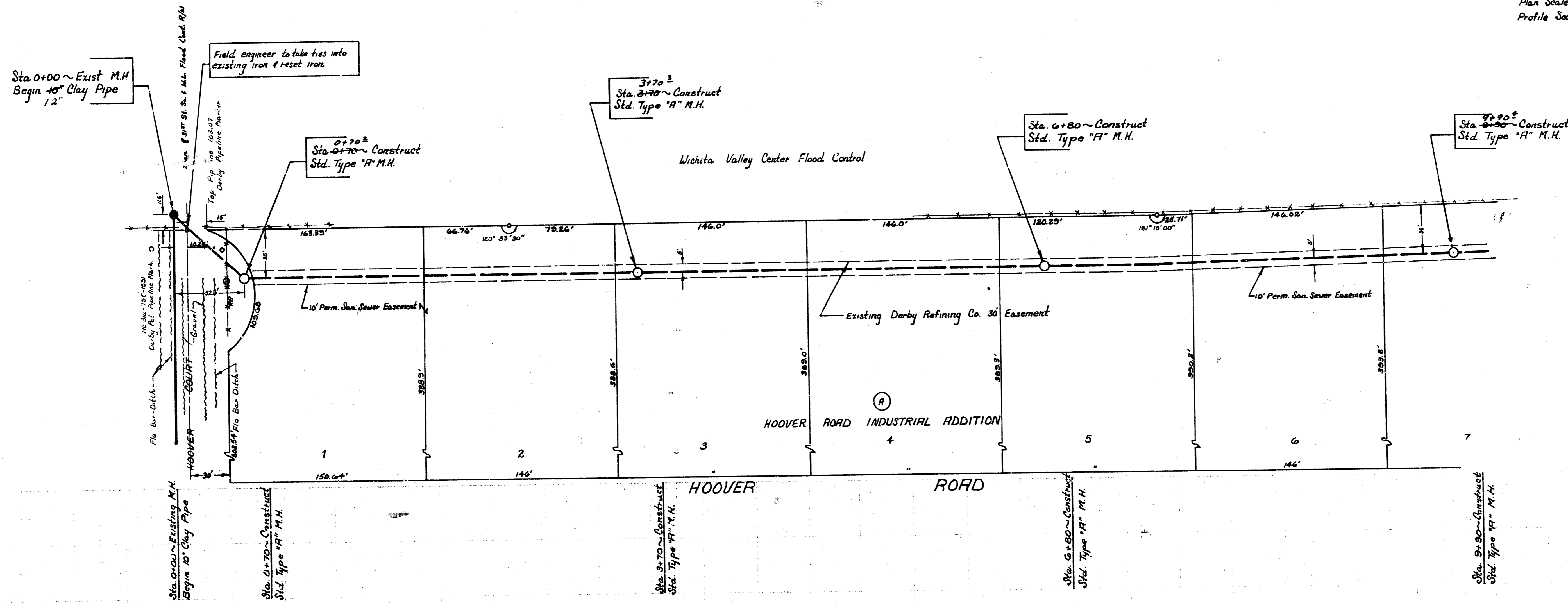


B.M. #1 ~ 108.43 City Std. 31" St. South + Hoover Road 14'E. + 32' N. of # both  
 B.M. #2 ~ 106.965 R.R. Spike E-face PP. W-side Hoover 1/4 mile S. of 31" St. South

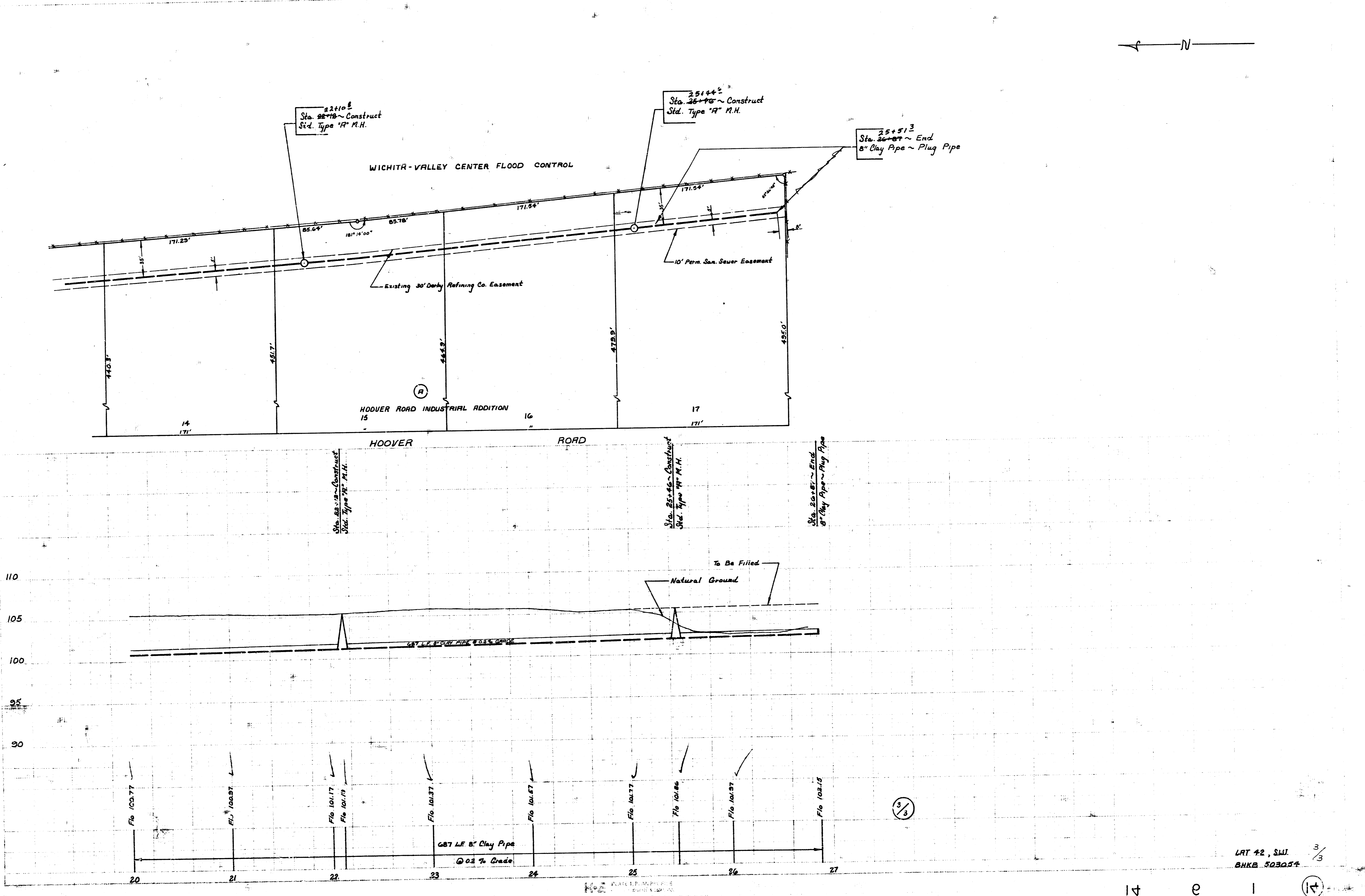
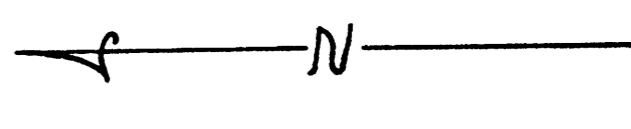
Plan Scale ~ 1"=40'  
 Profile Scale ~ Horiz. 1"=40'  
 ~ Vert. 1"=5'



As Built Final Meas. SS JAK-70  
**LRT. 42, S.W.I.**  
**CITY OF WICHITA**  
**R.W. LINN-CITY ENGINEER**  
 DATE NOV. 1973 PROJ. NO. BHKBS02054

FILMED FROM THE BEST AVAILABLE COPY....





LRT 42, SW 3/8  
BNKB 503054

FILMED FROM THE BEST AVAILABLE COPY....