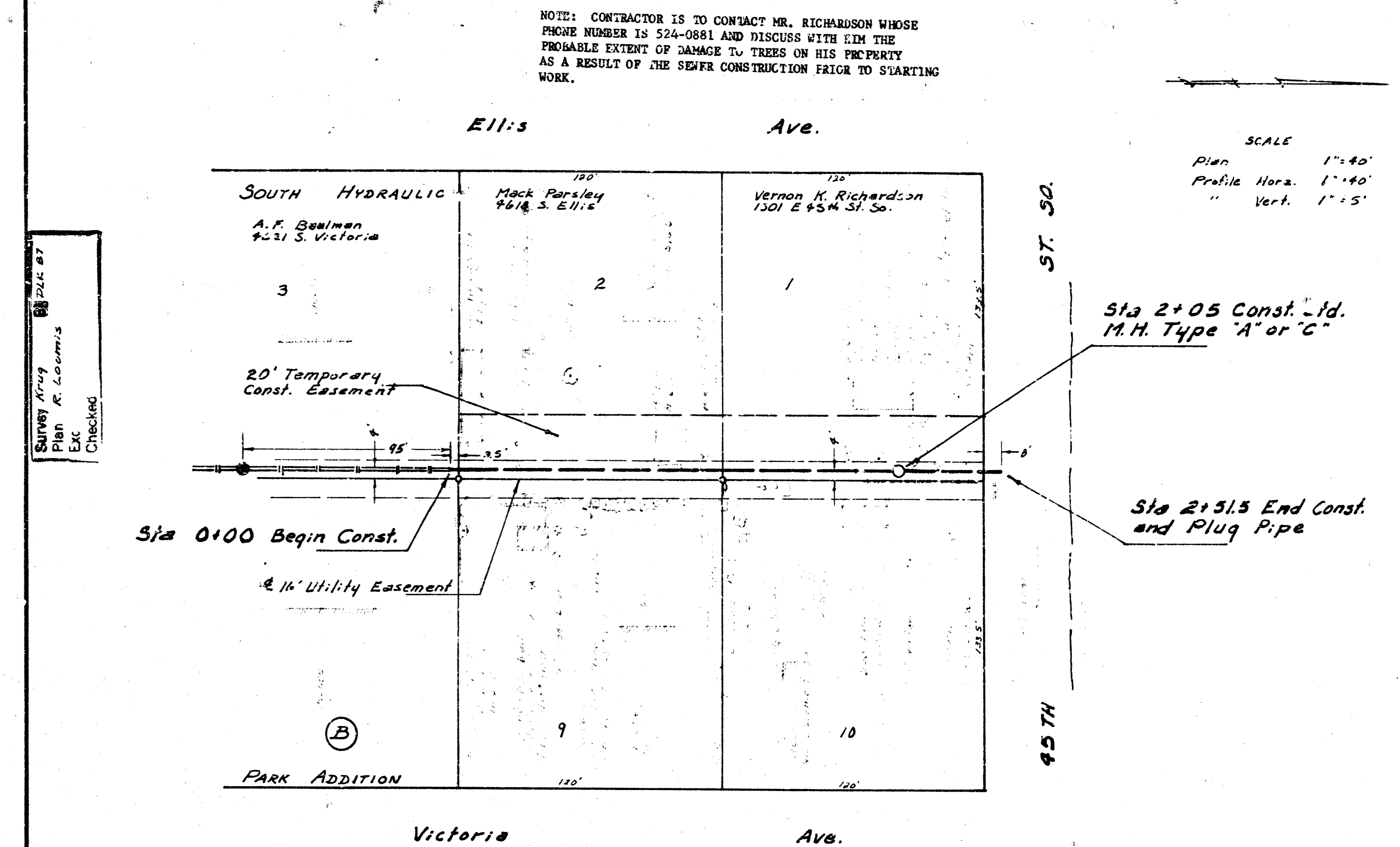


* CAUTION: Southwestern Bell buried cable; Contractor to contact S.W. Bell for exact location before beginning construction

Scale Plan 1" = 40'
Profile Vert. 1" = 5'

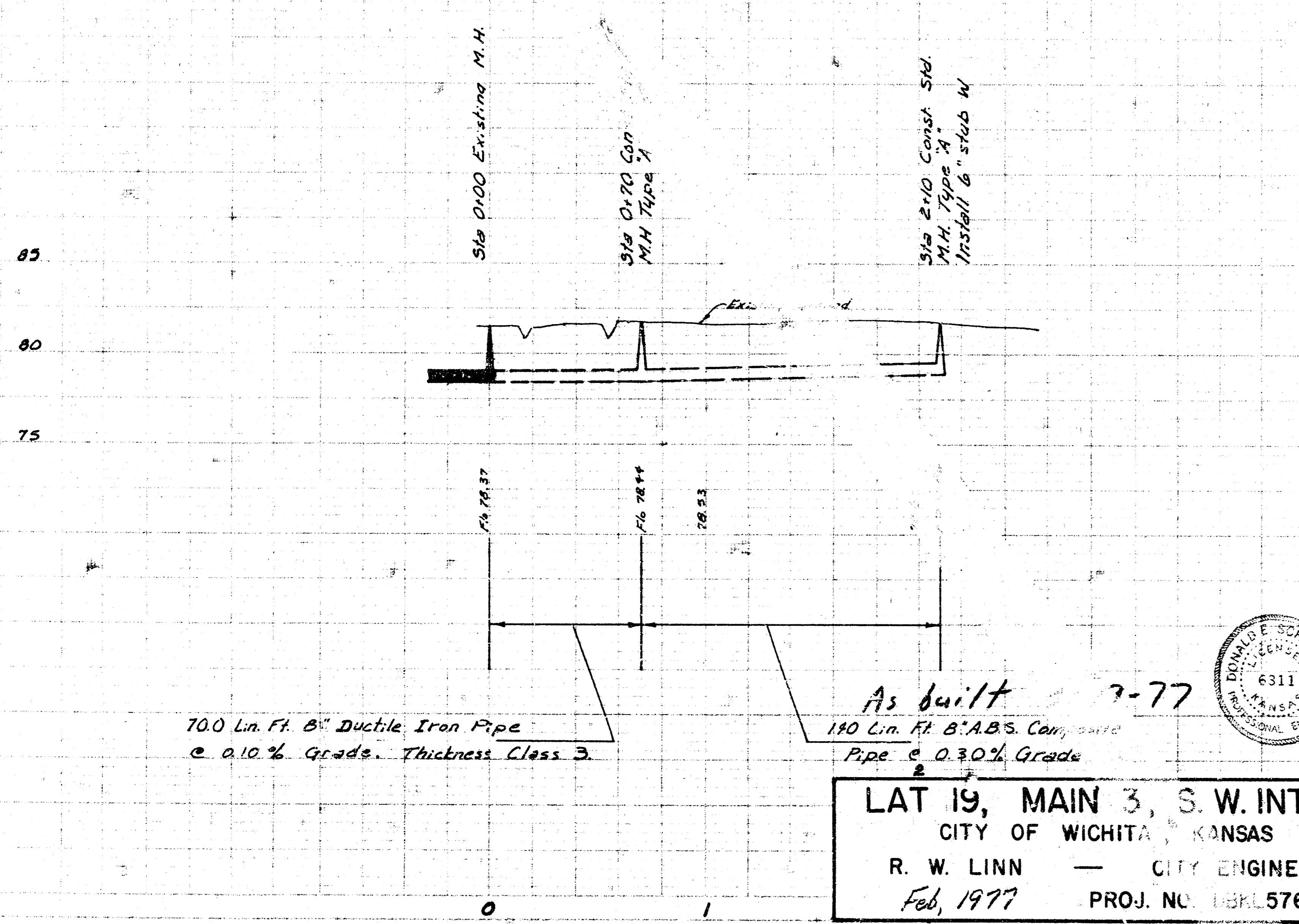
B.M. 89.73 NW corner, bottom of concrete step, House # 5539 Oak Ave., being SE corner of Oak & Osaage.
B.M. 85.02 R.R. spike, NW face of Power Pole, East side of Sycamore, 135' N. of 51st So.
B.M. 83.98 NE corner concrete porch, House # 801 W 52nd St. So.



NOTE: CONTRACTOR IS TO CONTACT MR. RICHARDSON WHOSE PHONE NUMBER IS 524-0881 AND DISCUSS WITH HIM THE PROBABLE EXTENT OF DAMAGE TO TREES ON HIS PROPERTY AS A RESULT OF THE SEWER CONSTRUCTION PRIOR TO STARTING WORK.

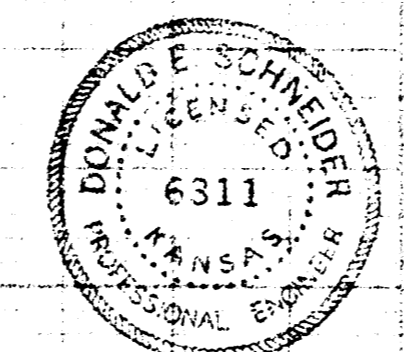
SCALE
Plan 1" = 40'
Profile Vert. 1" = 5'

B.M. 85.37 Step Bench on S.S. power pole on N.W. corner Elli's & 46th St. S.

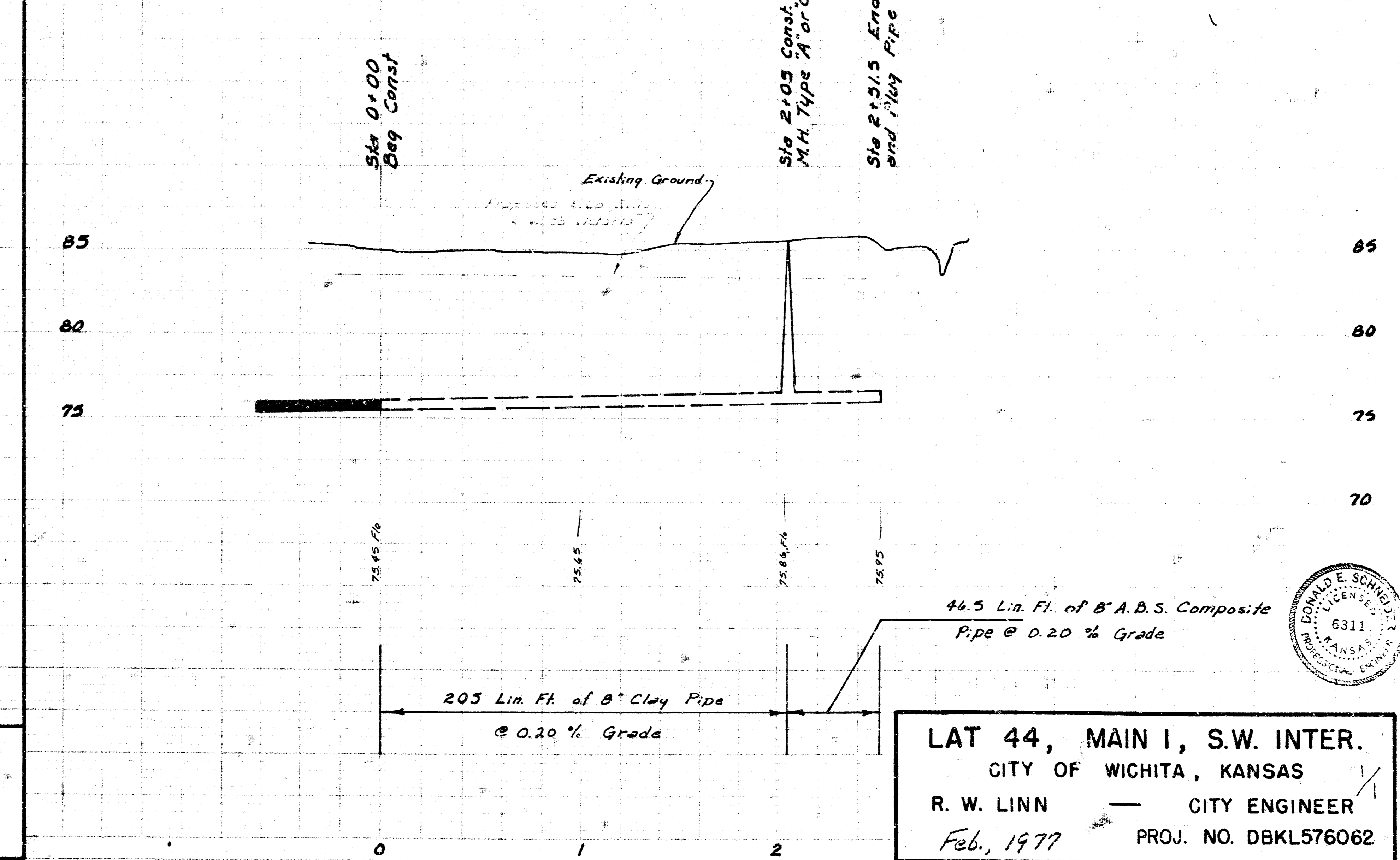


700 Lin. Ft. 8" Ductile Iron Pipe @ 0.10% Grade, Thickness Class 3

As built 3-77
180 Lin. Ft. 8" A.B.S. Comp. Pipe @ 0.30% Grade

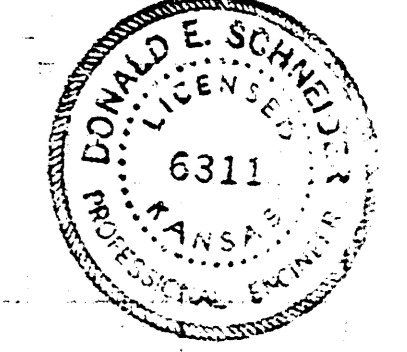


LAT 19, MAIN 3, S.W. INTR.
CITY OF WICHITA, KANSAS
R. W. LINN — CITY ENGINEER
Feb, 1977 PROJ. NO. DBKL576054



205 Lin. Ft. of 8" Clay Pipe @ 0.20% Grade

46.5 Lin. Ft. of 8" A.B.S. Composite Pipe @ 0.20% Grade



LAT 44, MAIN 1, S.W. INTER.
CITY OF WICHITA, KANSAS
R. W. LINN — CITY ENGINEER
Feb, 1977 PROJ. NO. DBKL576062