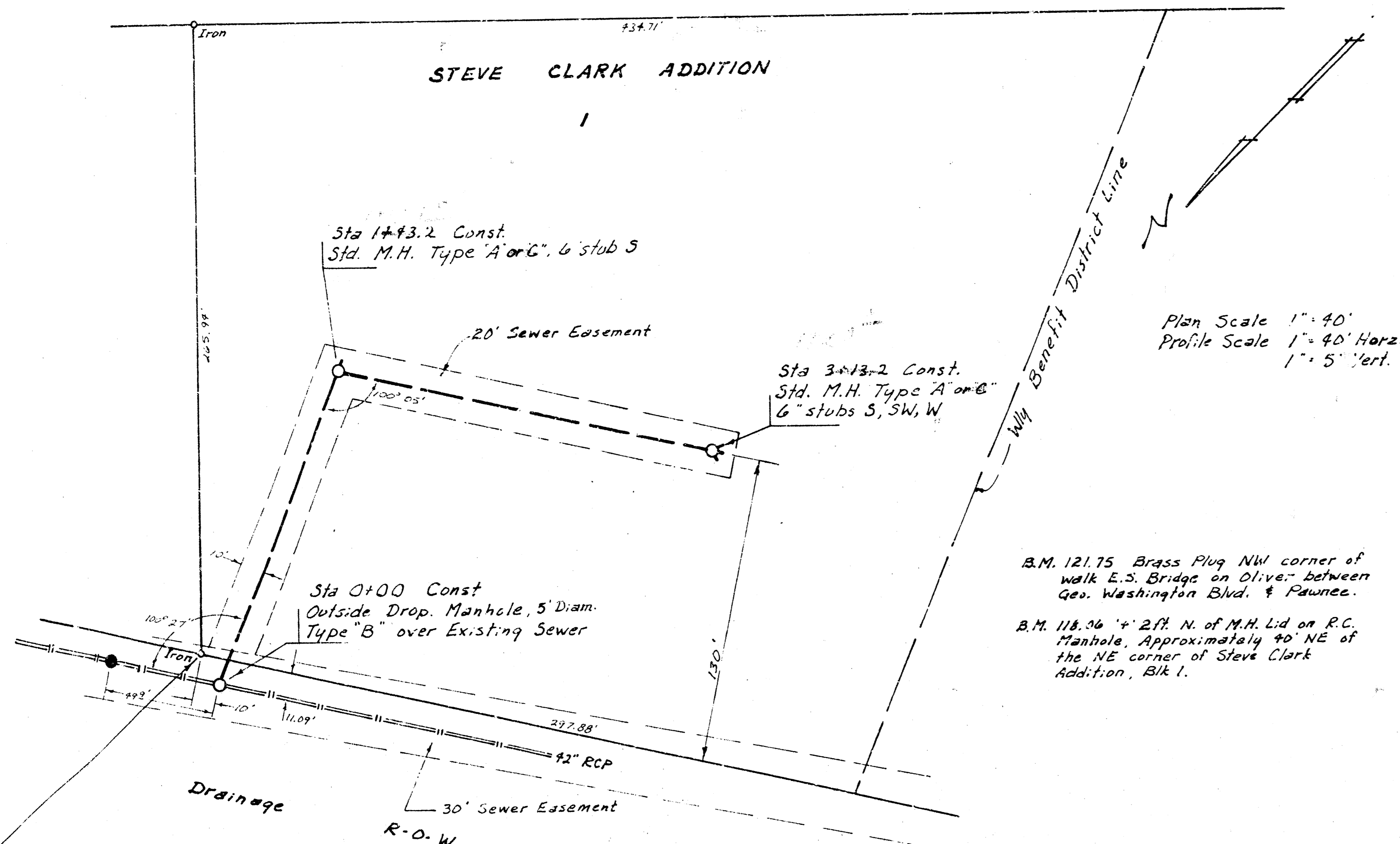


Kansas Turnpike Authority

STEVE CLARK ADDITION



Plan Scale 1"=40'  
Profile Scale 1"=40' Horiz.  
1"=5' Vert.

B.M. 121.75 Brass Plug NW corner of walk E.S. Bridge on Olive - between Geo. Washington Blvd. & Pawnee.  
B.M. 118.36 4" x 2" N. of M.H. Lid on R.C. Manhole, Approximately 40' NE of the NE corner of Steve Clark Addition, Blk 1.

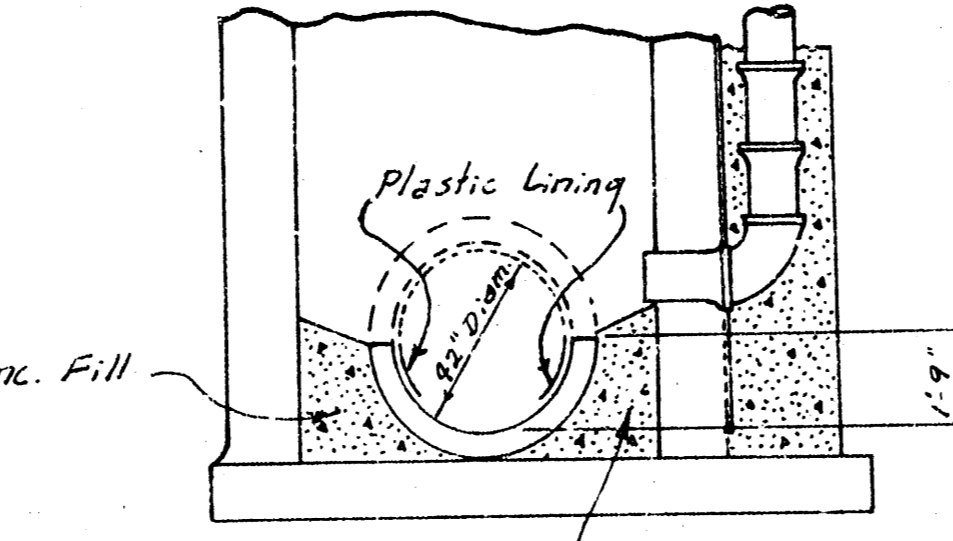
Northerly most corner of Steve Clark Addition located at approximately 700 ft. S. & 1065 ft. E. of intersection of Oliver & Pawnee.

Sta 0+00.0 Const. Outside Drop Manhole Type "B" 5" Diam over existing Sewer

Sta 1+43.2 Const. Std. M.H. Type "A" or "C", 6" stub S

Sta 3+13.2 Const. Std. M.H. Type "A" or "C", 6" stubs N, S, W, E

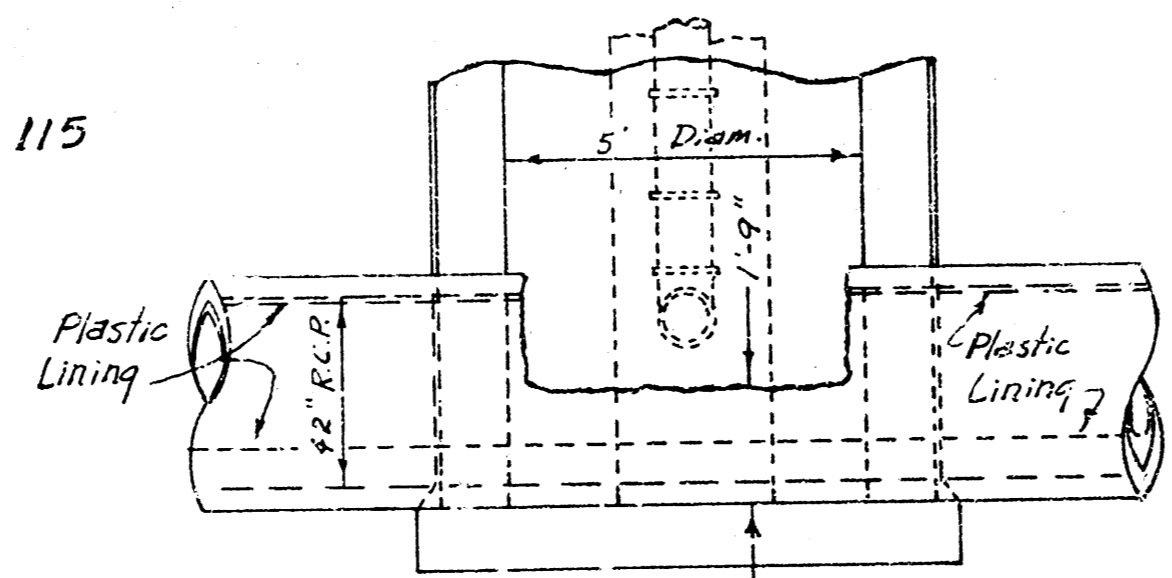
Note: Contact Ted Mason, Architect, 715 W. 13th St. Wichita Ks. ph. 267-3298, for top of manhole elevations



SECTION Sta 0+00.0

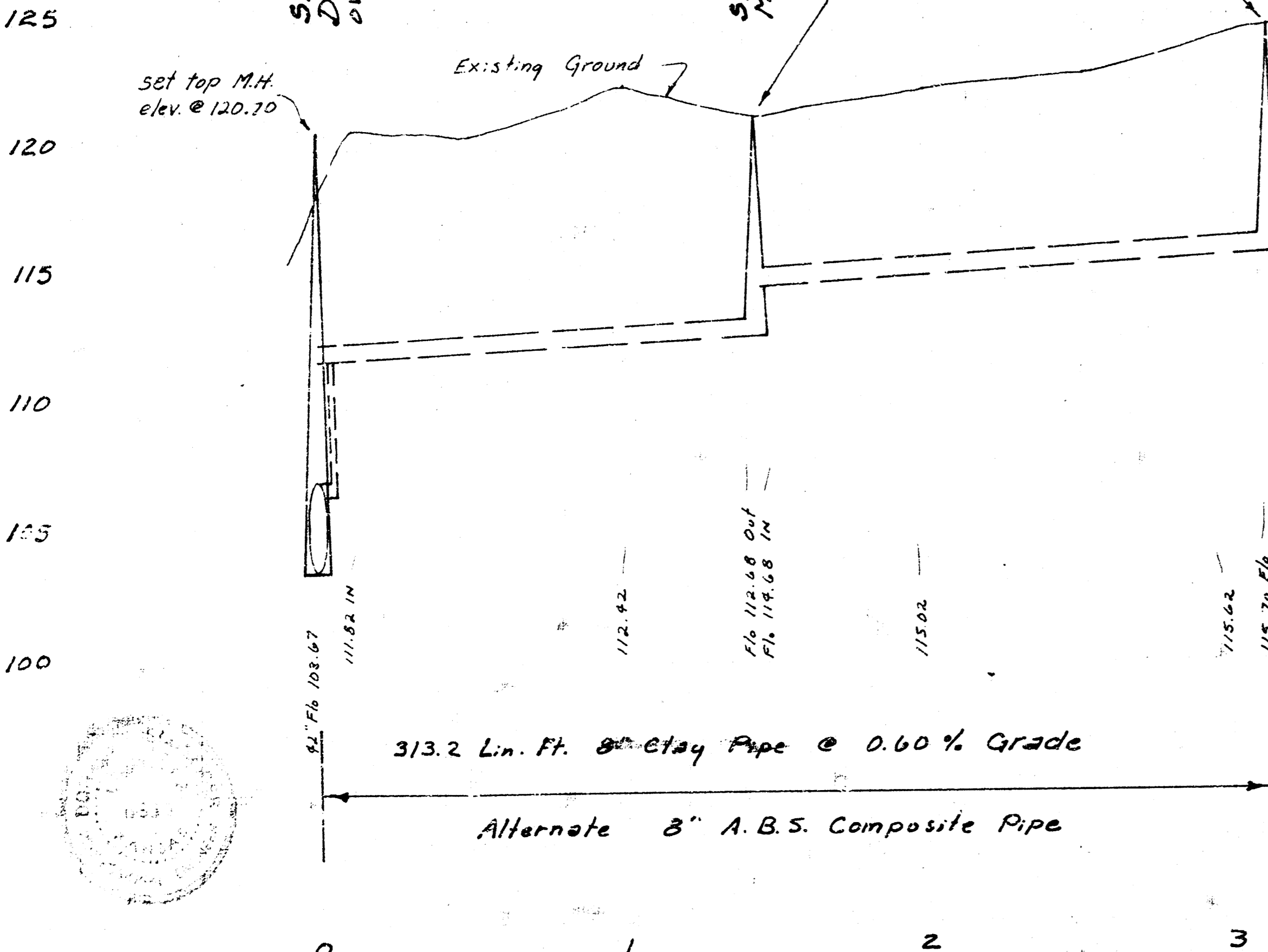
Std. M.H. Type "B" 5" diam.

NOTE: All exposed Conc. pipe surface to be protected with plastic lining as approved by the Field Engineer. Method of removing top 1/2 of 92" R.C.P. is to be approved by the Field Engineer.

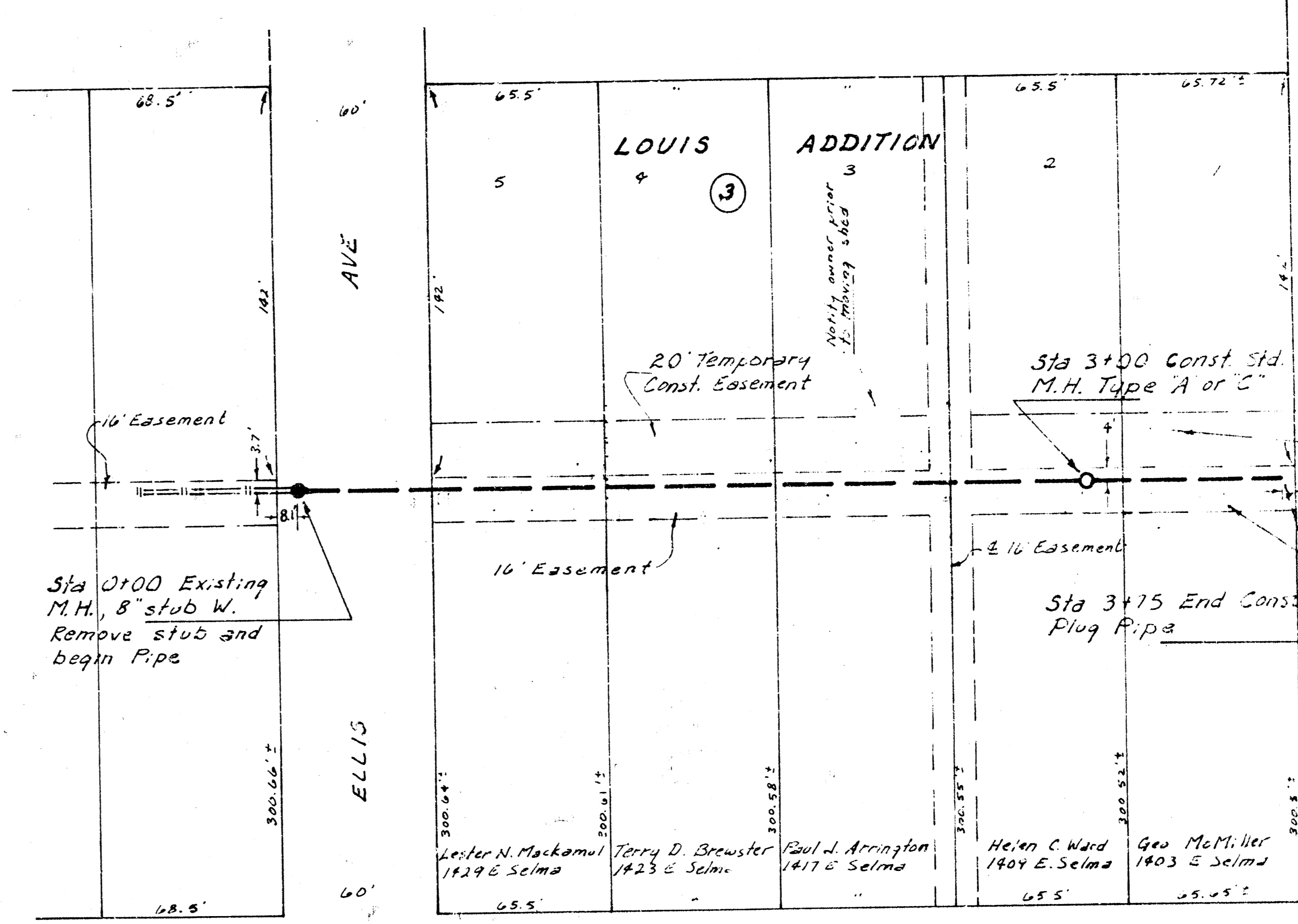


SECTION Sta 0+00.0

LAT 58 WAR IND. SEWER  
CITY OF WICHITA, KANSAS  
R. W. LINN - CITY ENGINEER  
PROJ. NO. DBKL577019

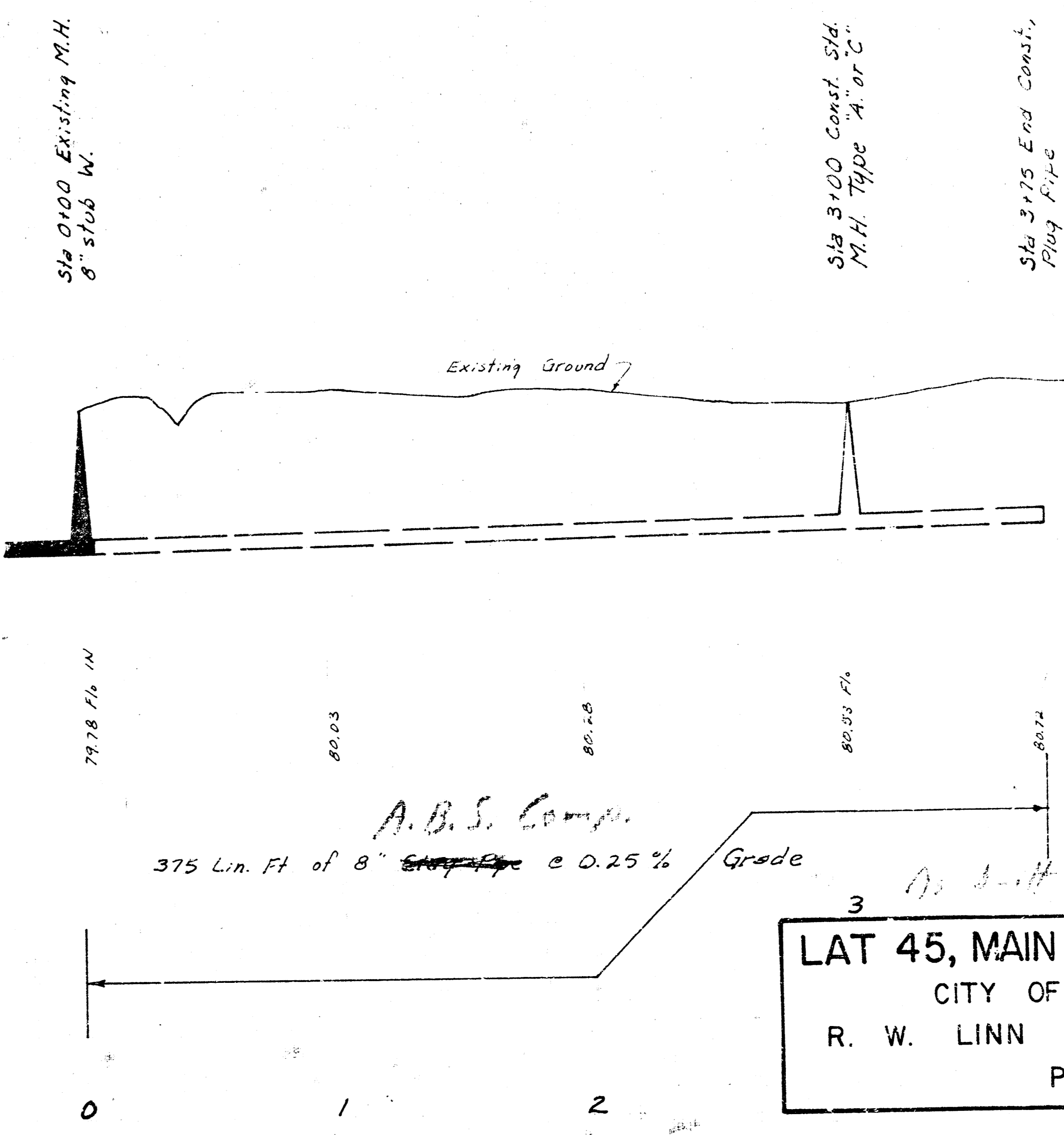


B.M. 85.92 Head E. bolt on Fire Hydrant, S.W. corner Alta & Hydraulic  
B.M. 86.27 City Std Disc 31' W. & 31' S. of section corner at Hydraulic & MacArthur.



Plan Scale 1"=40'  
Profile Scale 1"=40' Horiz.  
1"=5' Vert.

NOTE: CONTRACTOR SHALL GIVE ALL PROPERTY OWNERS APPLICABLE BY THE CONSTRUCTION OF THIS PROJECT A MINIMUM OF 10 DAYS ADVANCE NOTICE PRIOR TO START OF CONSTRUCTION.



LAT 45, MAIN I, S.W. INTERCEPTOR  
CITY OF WICHITA, KANSAS  
R. W. LINN - CITY ENGINEER  
PROJECT NO. DBKL577053