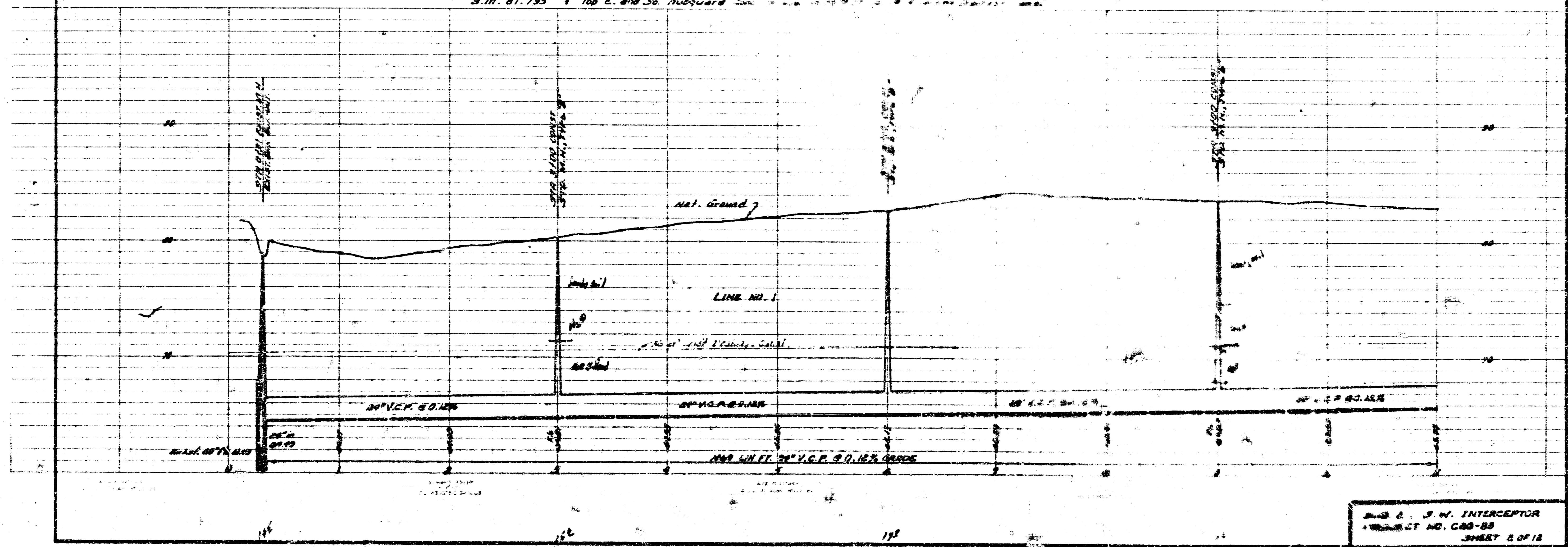
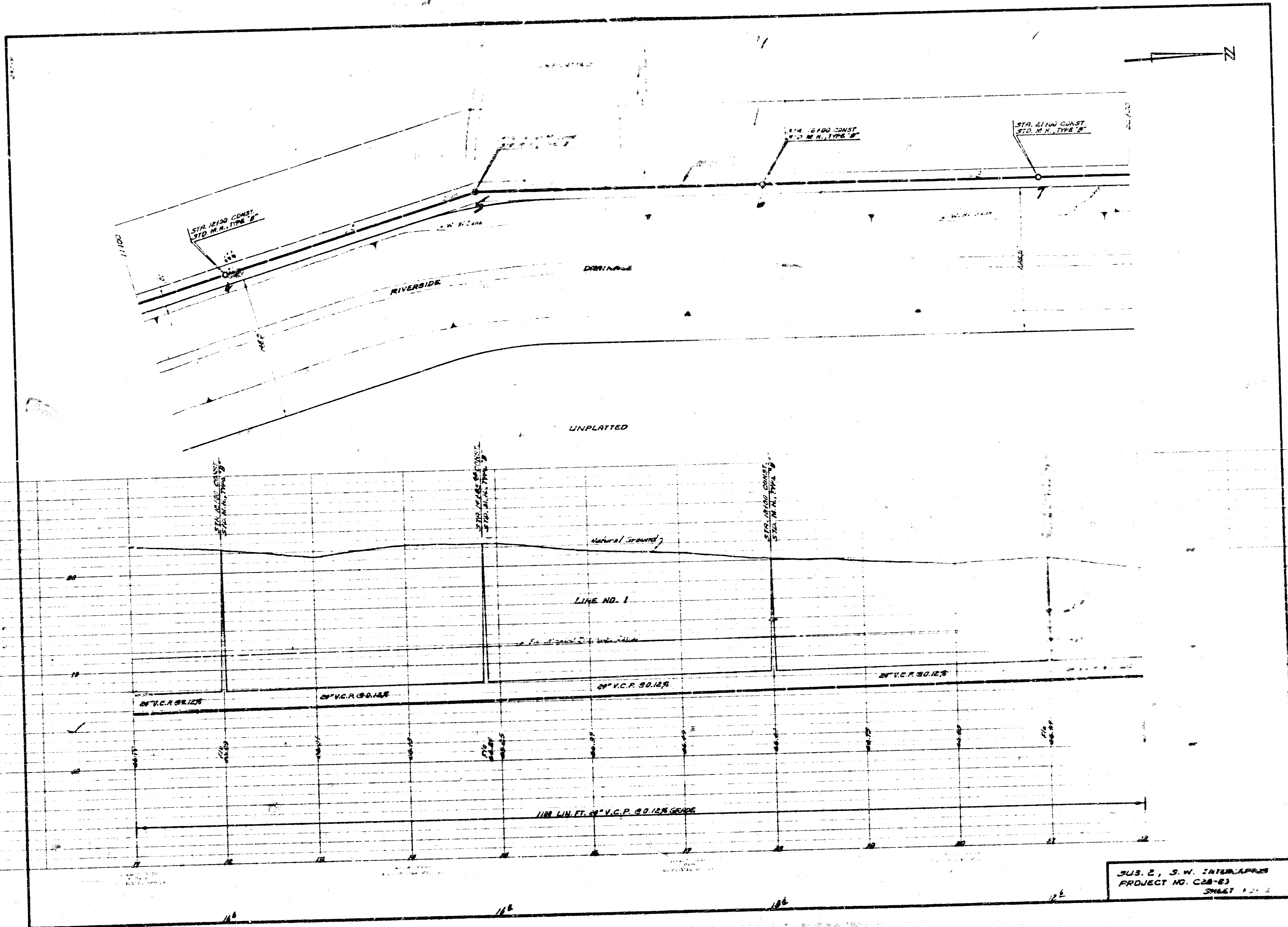


Sand fill
 based on ~~1950~~
 data @ 45' width top of 16" diameter
 depth of
 24" R.P.
 Avg depth M.H. = $\frac{2.5 \times 10}{10} = 2.5'$ Plan Scale 1"=40'
 (81-12) $\frac{1000}{1000} = 1.0$ Profile Scale 1"=40' vert.

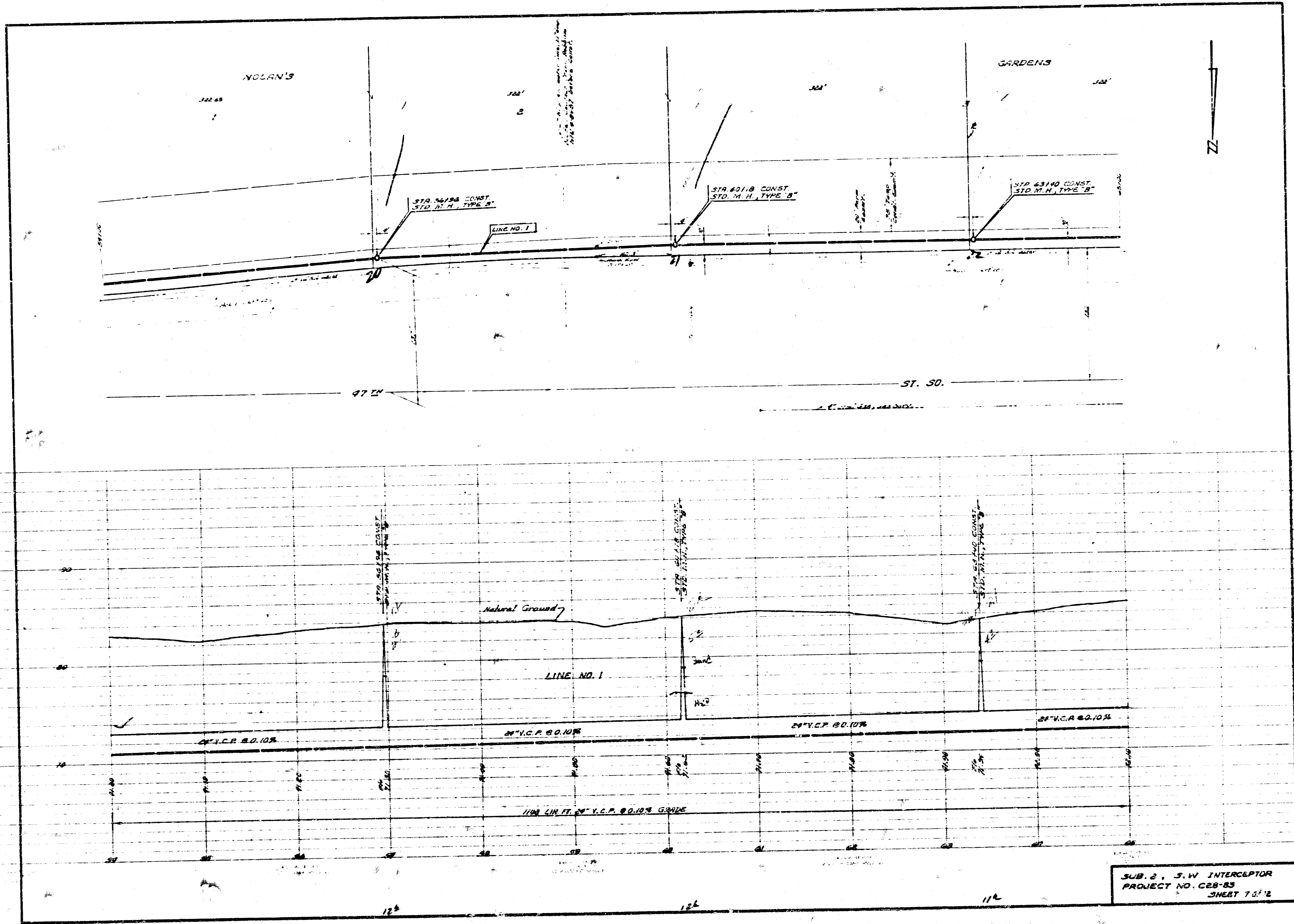
B.M. 81.795 "4" Top E. end So. Subquard



S.W. INTERCEPTOR
 PROJECT NO. C-88-88
 SHEET 5 OF 18



SUS. 2, S.W. INTERLAPUS
 PROJECT NO. C28-83
 SHEET 1 OF 2



NOLAN'S

GARDENS

STA 20+00 CONST. STD. M.H. TYPE 'B'

STA 21+00 CONST. STD. M.H. TYPE 'B'

STA 22+00 CONST. STD. M.H. TYPE 'B'

LINE NO. 1

ST. 50.

Natural Ground

LINE NO. 1

24" V.C.P. @ 0.10%

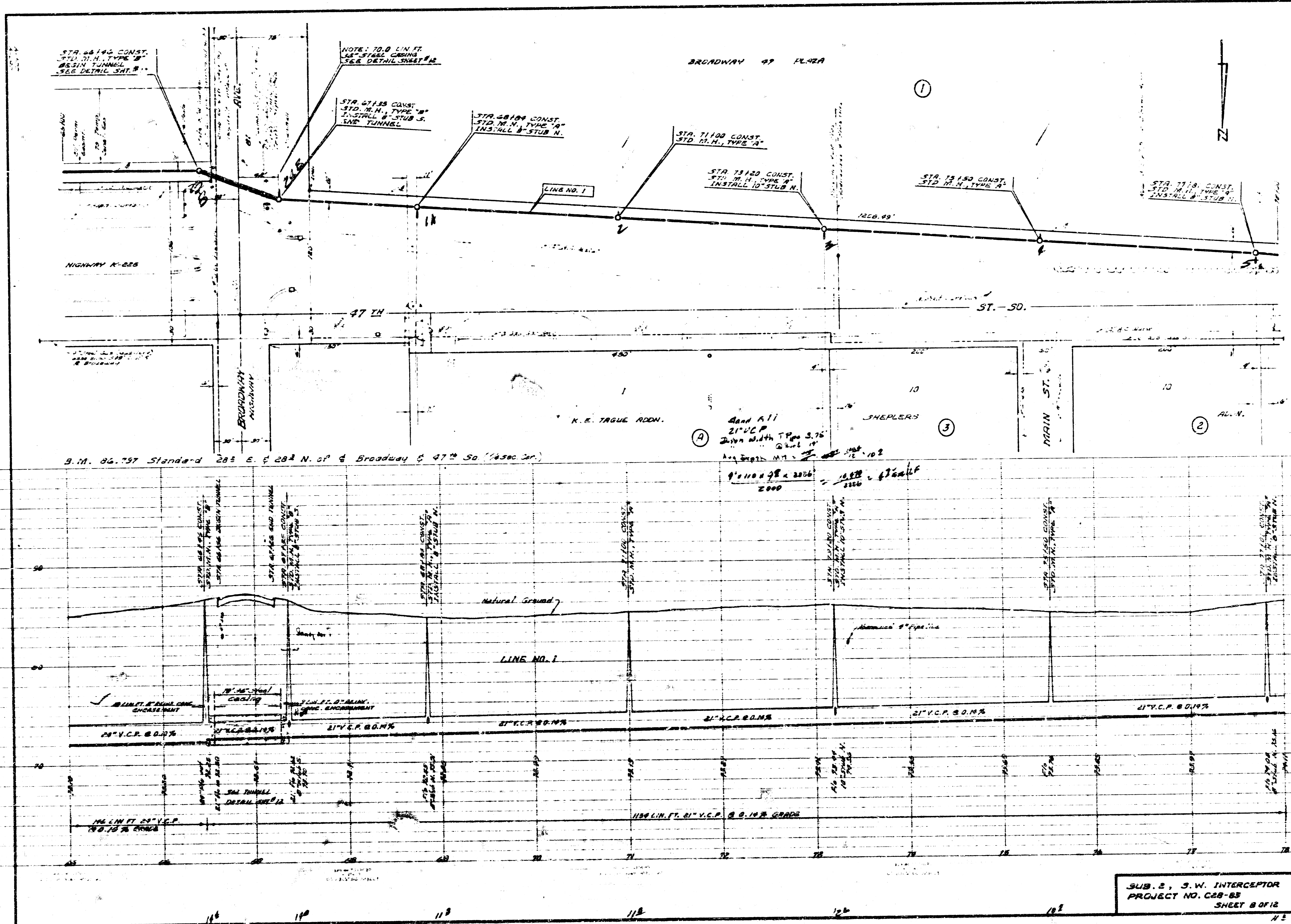
24" V.C.P. @ 0.10%

24" V.C.P. @ 0.10%

24" V.C.P. @ 0.10%

1100 4 1/2" V.C.P. @ 0.10% GRADE

SUB. 2, S.W. INTERCEPTOR
PROJECT NO. C28-83
SHEET 7 OF 12



STA. 6814.5 CONST.
STD. M.H., TYPE "B"
BASIN TUNNEL
SEE DETAIL SHEET #...

NOTE: 70.0 LIN. FT.
12" STALL CASING
SEE DETAIL SHEET #...

STA. 6715.5 CONST.
STD. M.H., TYPE "B"
INSTALL 8" STUB S.
SEE TUNNEL

STA. 6819.0 CONST.
STD. M.H., TYPE "B"
INSTALL 8" STUB N.

STA. 7110.0 CONST.
STD. M.H., TYPE "A"

STA. 7120.0 CONST.
STD. M.H., TYPE "B"
INSTALL 10" STUB N.

STA. 7130.0 CONST.
STD. M.H., TYPE "A"

STA. 7119.0 CONST.
STD. M.H., TYPE "B"
INSTALL 8" STUB N.

HIGHWAY K-225

47th

ST. 50

K.E. TROUE ADDN.

And All
21" V.C.P.
Down with 7" Pipe 3.75'
@ 2% SLOPE
As Shown on P. 102

9" 110 x 9" x 2000
2000

B.M. 06.797 Standard 285 E. & 282 N. of Broadway & 47th St. (4sec. cor.)

Natural Ground

LINE NO. 1

21" V.C.P. @ 0.17%

21" V.C.P. @ 0.17%

21" V.C.P. @ 0.17%

21" V.C.P. @ 0.17%

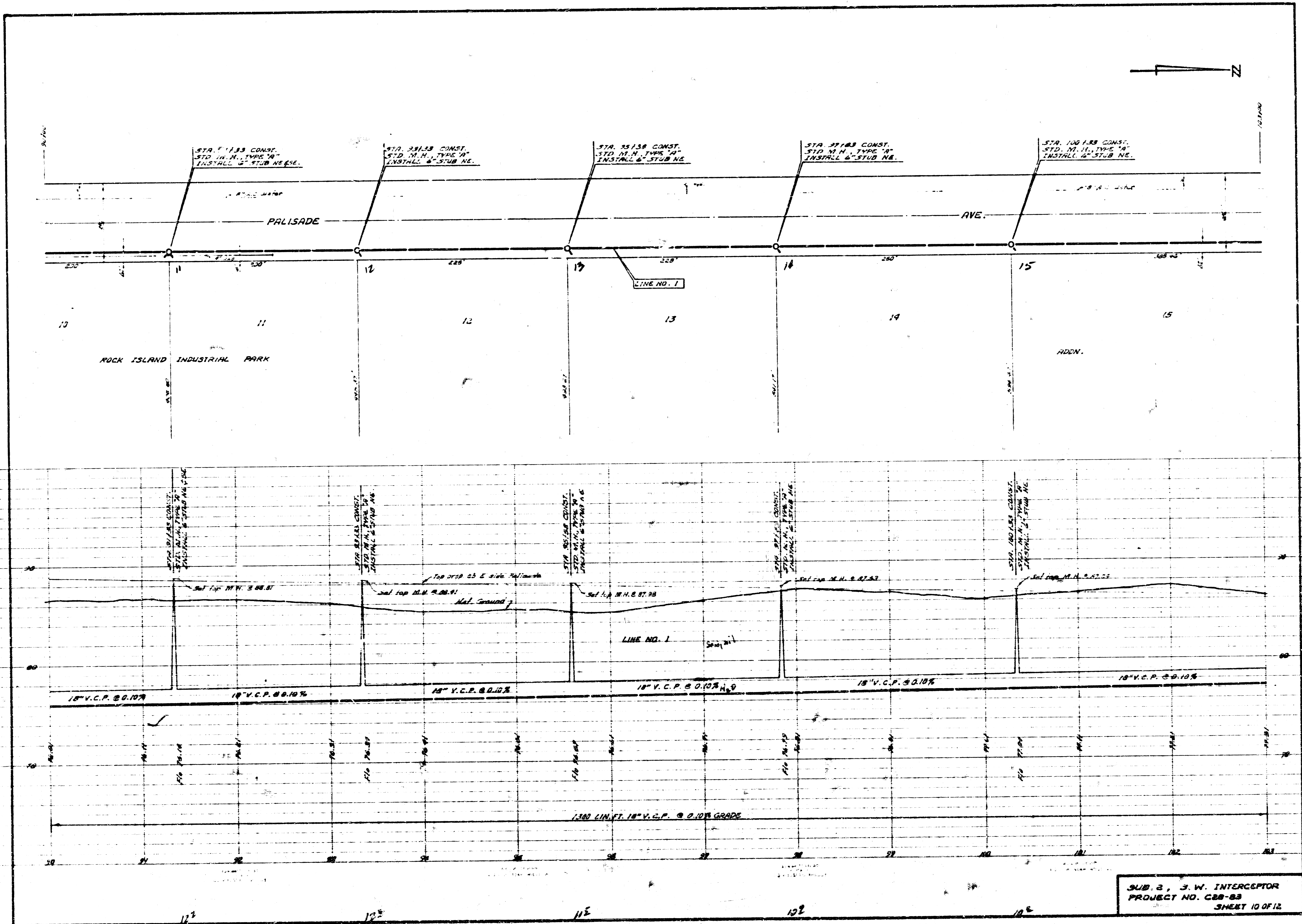
21" V.C.P. @ 0.17%

21" V.C.P. @ 0.17%

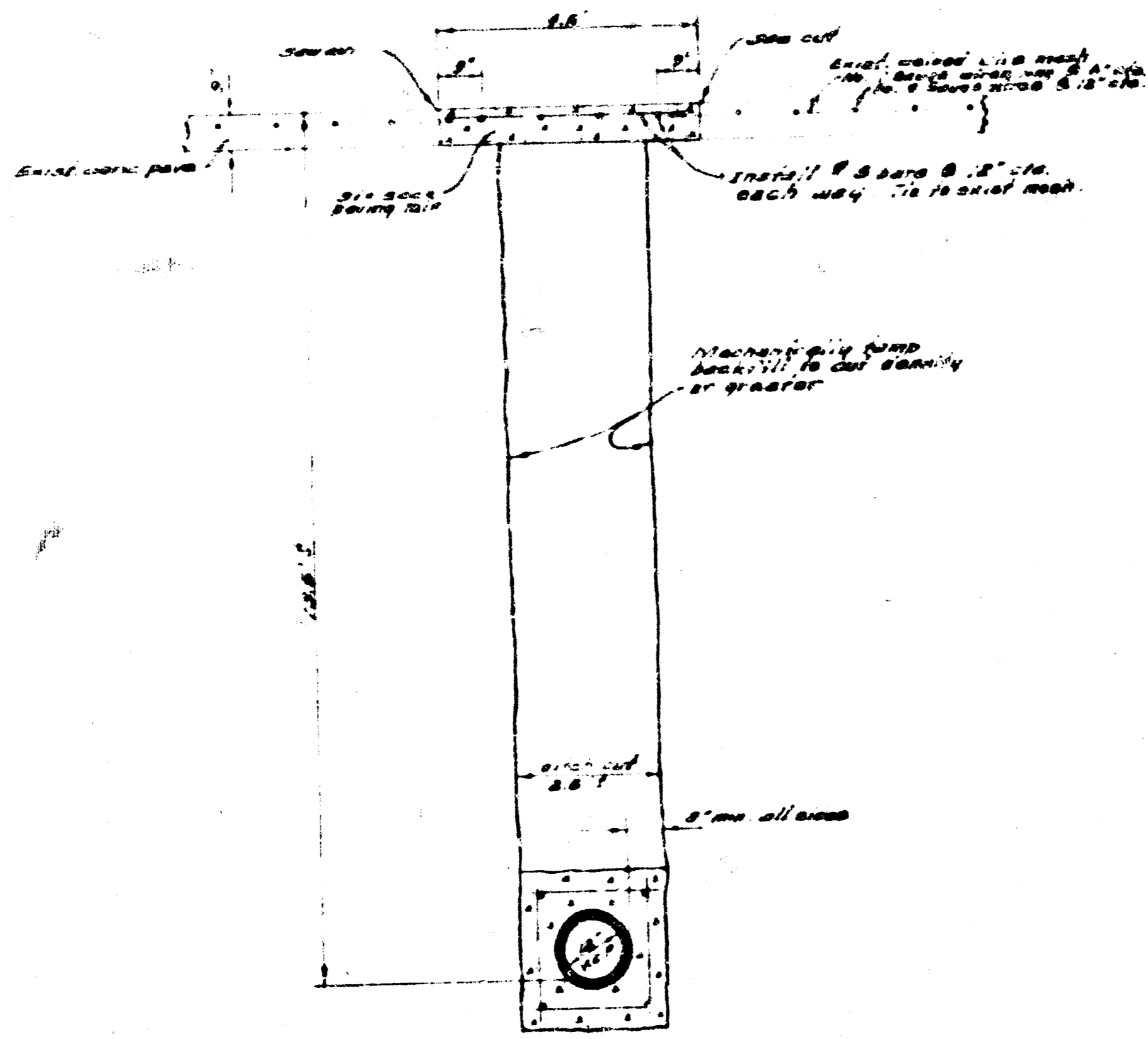
116 LIN. FT. 21" V.C.P.
@ 0.10% GRADE

1166 LIN. FT. 21" V.C.P. @ 0.10% GRADE

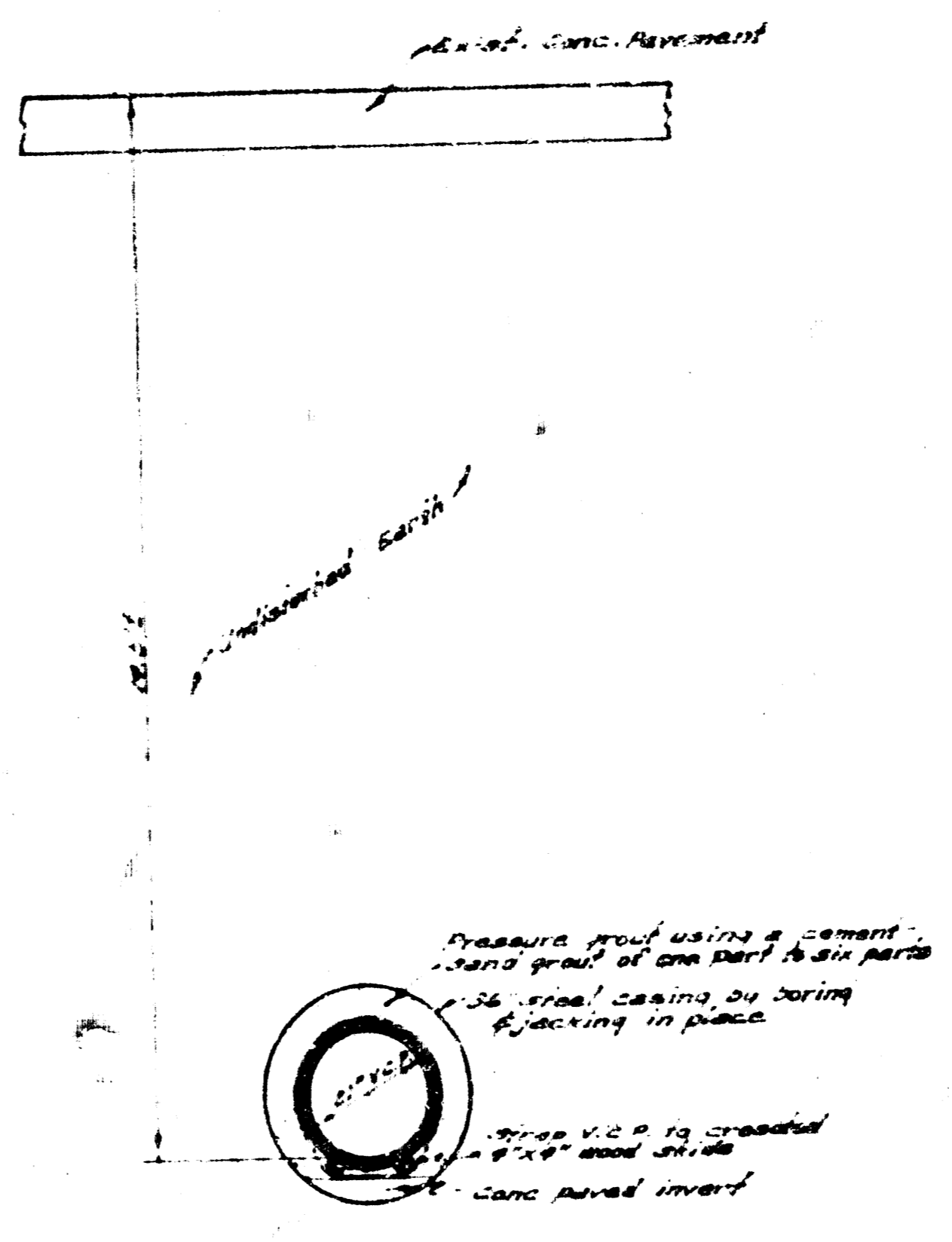
SUB. 2, S.W. INTERCEPTOR
PROJECT NO. C28-83
SHEET 8 OF 12



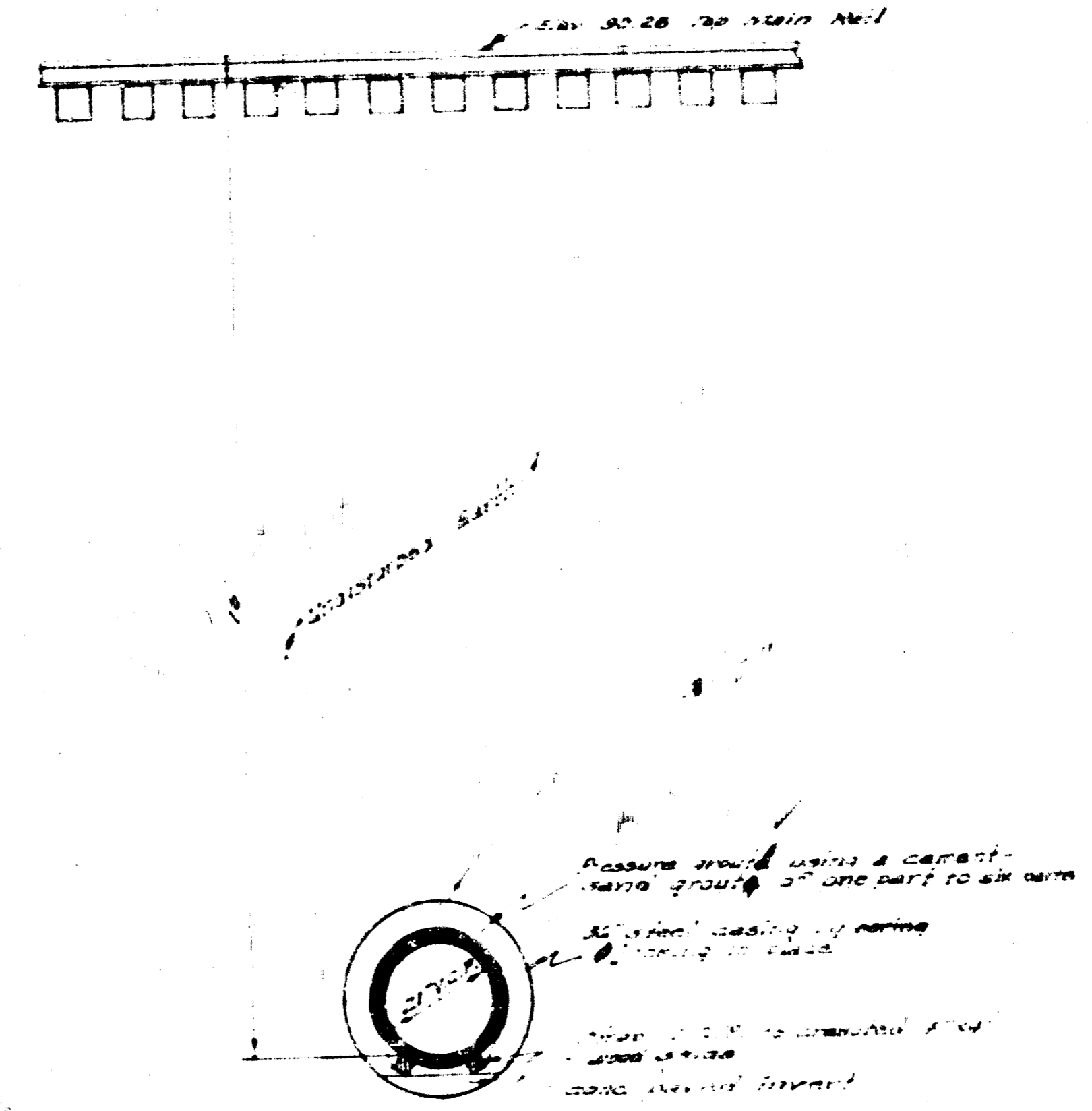
SUB. 2, J. W. INTERCEPTOR
 PROJECT NO. C28-83
 SHEET 10 OF 12



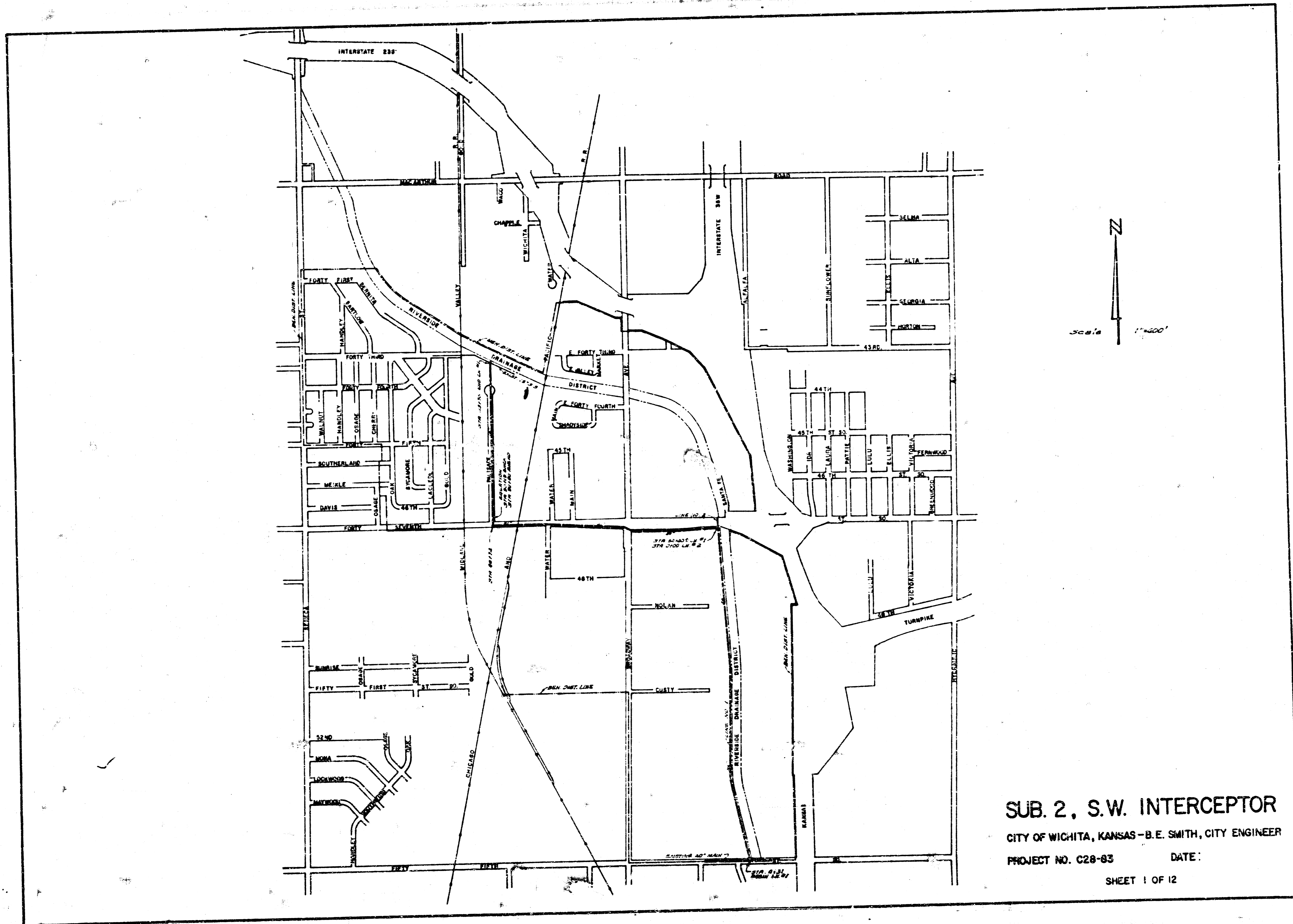
TYPICAL SECTION
 4718 ST. JO. HIGHWAY 225) CROSSING STA 0108 TO 01175 LN. #2
 Scale 1"=2'-0"



TYPICAL SECTION
 BRADWAY, HIGHWAY 87) CROSSING STA 0436 TO 0446 LN #1
 Scale 1"=2'-0"



TYPICAL SECTION
 C.R.I. & P. R.R. CROSSING STA 0123 TO 0134 LN #1
 Scale 1"=2'-0"

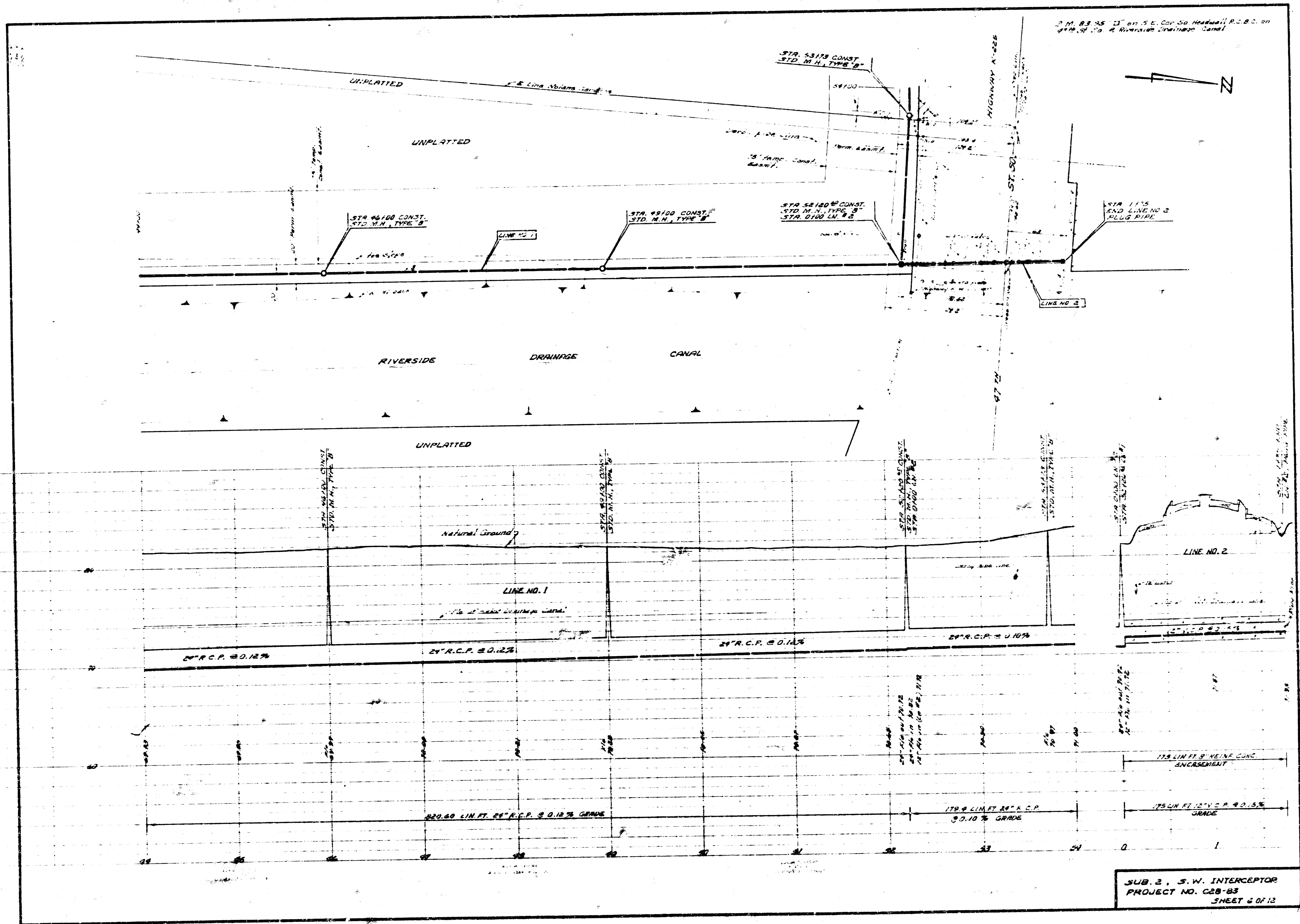


SUB. 2, S.W. INTERCEPTOR

CITY OF WICHITA, KANSAS - B.E. SMITH, CITY ENGINEER

PROJECT NO. C28-83 DATE:

SHEET 1 OF 12



2 M. 83 25 11' on S.E. Cor. So. Headwall R.C.C. on
 419.51' to 2 Riverside Drainage Canal

SUB. 2, S.W. INTERCEPTOR
 PROJECT NO. C28-83
 SHEET 6 OF 12

