

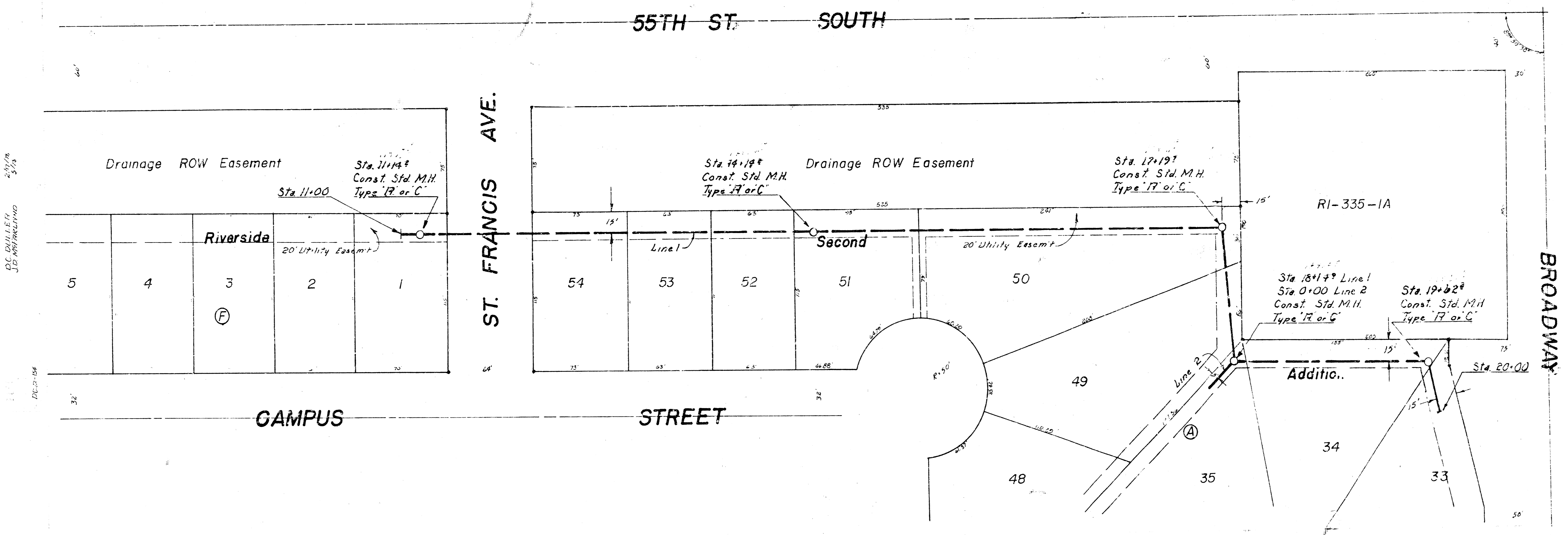
# LAT. 12, MAIN 2, SOUTHWEST INTERCEPTOR

CITY OF WICHITA  
 R.W. LINN - CITY ENGINEER  
 PROJECT NO. DBKL577102  
 468-76-245-80461-000-000-001

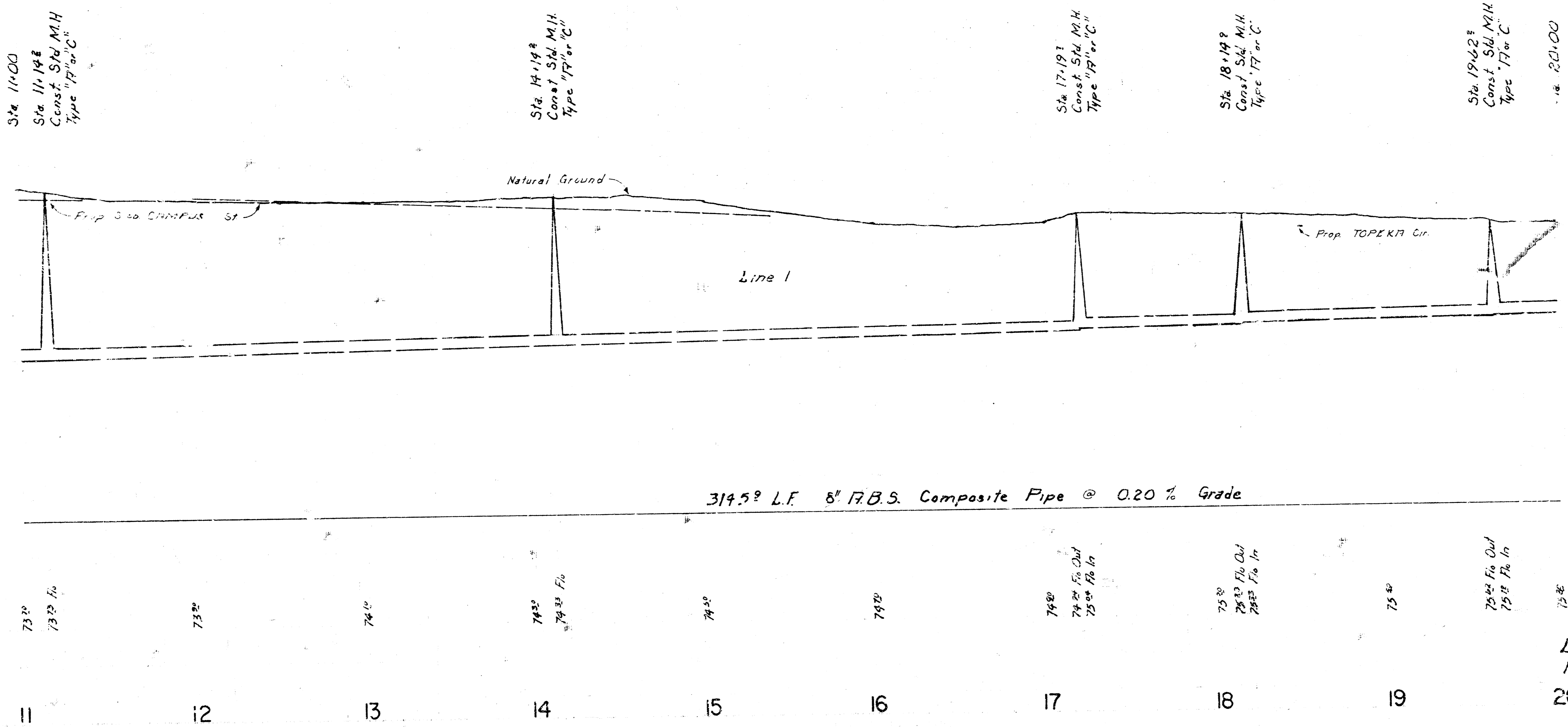
NOTE: RISERS AND ADDITIONAL STUBS IN MANHOLES SHALL BE INSTALLED ON THIS PROJECT TO SERVE LOTS WHERE THE DEPTH OF THE 3" SEWER IS GREATER THAN 10 FT., WHERE THE SPUR IS IN ROCK, OR WHEN THE SEWER IS IN GROUND WATER. ELEVATIONS OF STUBS AND TOPS OF RISERS SHALL BE SUCH THAT WILL FACILITATE CONNECTION OF BASEMENT DRAINS WHEN THESE ARE DEVELOPED. RISER CONSTRUCTION SHALL CONFORM TO THE REQUIREMENTS OF THE SLOPING TRENCH WALL AS SHOWN ON STANDARD RISER DETAIL SHEET. LOCATIONS OF THE ENDS OF THE RISERS SHALL BE MARKED BY FASTENING GREEN PLASTIC ORANGE TAPE TO THE END OF THE RISER AND BROUGHT TO THE GROUND SURFACE AS THE ENCAVATION IS BACKFILLED SUCH THAT THE MARKED TAPE WILL BE VISIBLE WHEN THE PROJECT IS COMPLETED. ALL RISERS SHALL BE CONSTRUCTED USING A.S.S. SCHEDULE 40 PIPE.





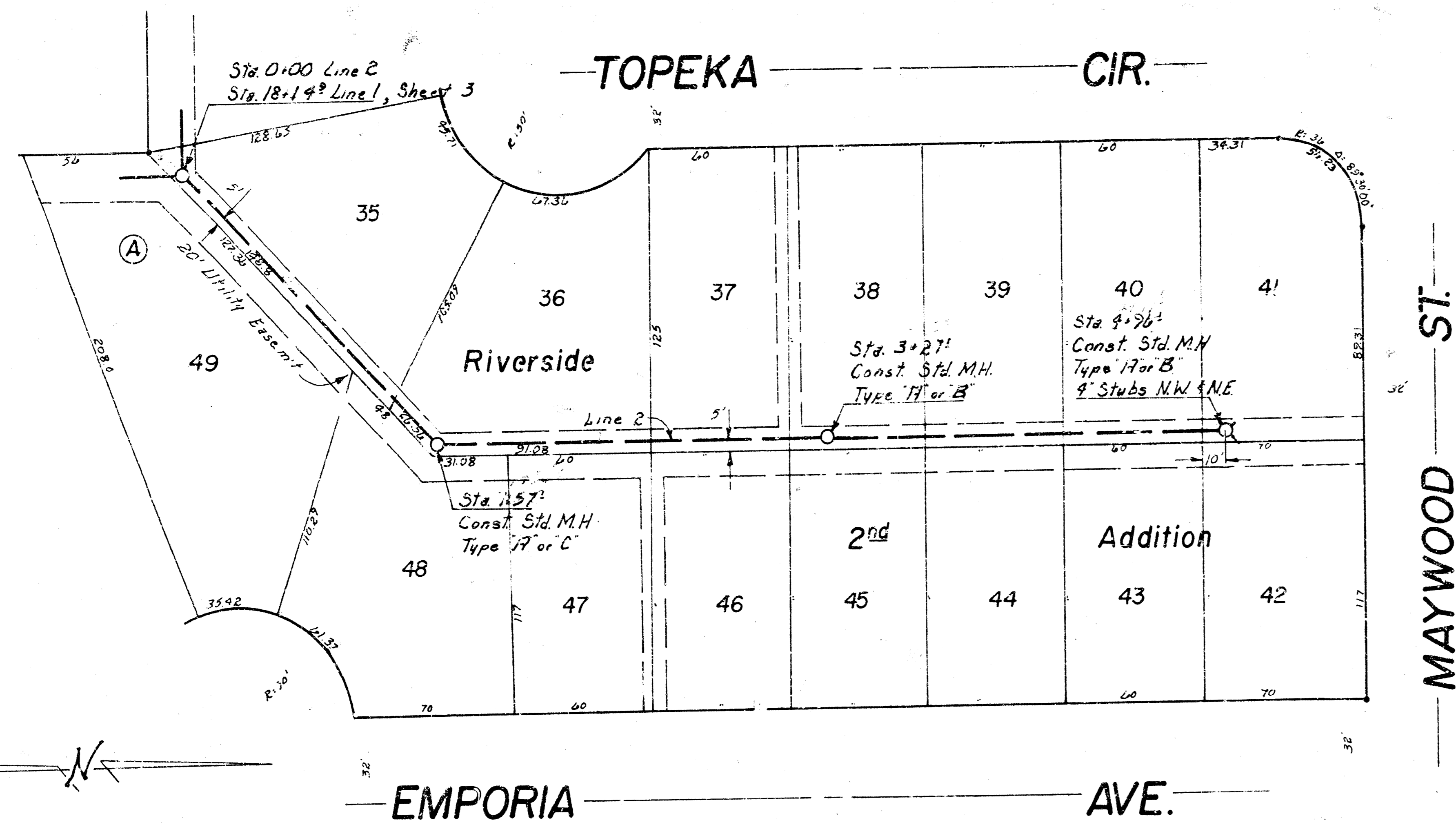


SCALE  
 PLAN: 1" = 40'  
 PROFILE: 1" = 40'  
 VERT: 1" = 5'



Lot 12, Main 2 SOUTHWEST INTERCEPTOR  
 Proj. No. 463-76-245-80461-000-000-001





SCALE  
 PLAN: 1" = 40'  
 PROFILE: 1" = 40'  
 VERT: 1" = 5'

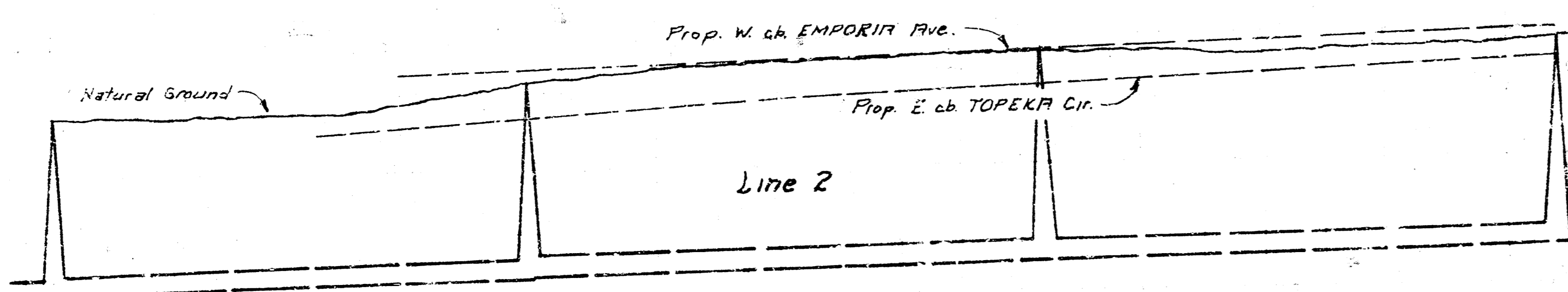
Sta. 0+00 Line 2  
 Sta. 18+19.3 Line 1, Sheet 3

Sta. 1+57.1  
 Const. Std. M.H.  
 Type 17" or 18"

Sta. 3+27.1  
 Const. Std. M.H.  
 Type 17" or 18"

Sta. 4+96.2  
 Const. Std. M.H.  
 Type 17" or 18"  
 4" Stubs N.W. & N.E.

90  
 85  
 80  
 75  
 70



496.2 L.F. 8" R.B.S. Composite Pipe @ 0.20 % Grade

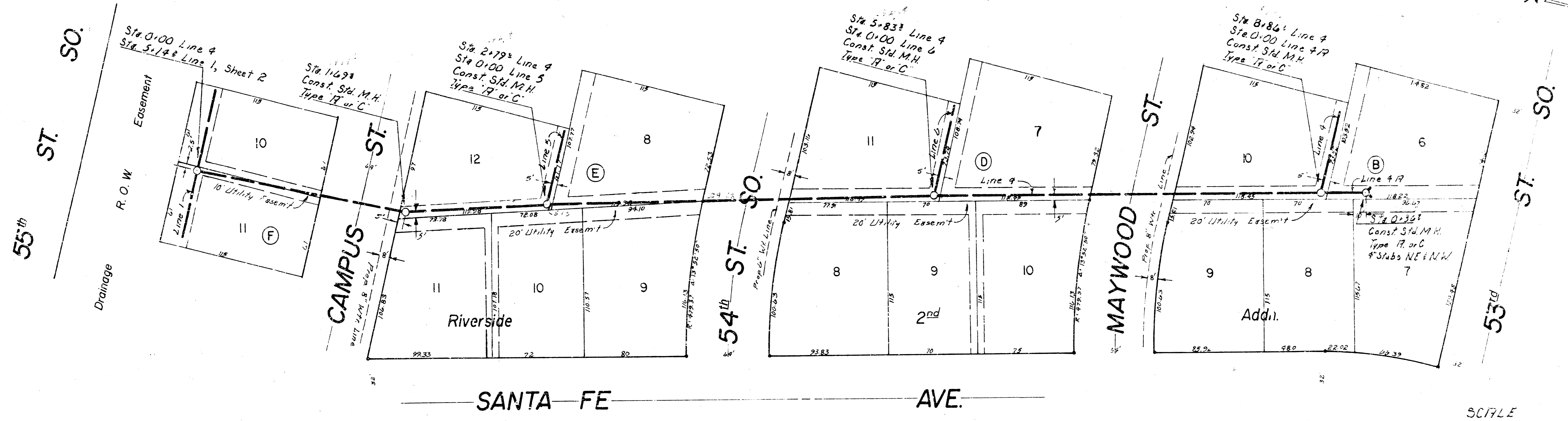


Lot 12, Main & Southwest Interceptor  
 Proj. No. 468-76-245-80461-000-000-001

Sheet 12



DEC 14  
 J.D. BULLIPE  
 J.D. BULLIPE



SCALE  
 PLAN: 1" = 40'  
 PROFILE: 1" = 40'  
 Vert: 1" = 5'

Sta. 0+00 Line 4  
 Sta. 5+14 Sheet 2

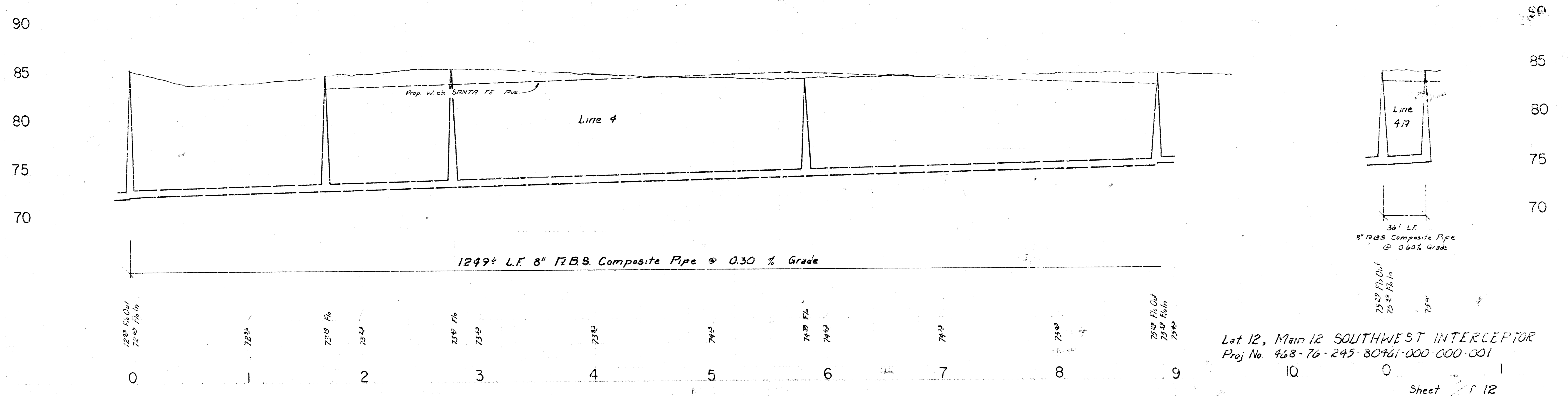
Sta. 1+69  
 Const. Sid. M.H.  
 Type "R" or "C"

Sta. 2+79  
 Line 4  
 Sta. 0+00 Line 5  
 Const. Sid. M.H.  
 Type "R" or "C"

Sta. 5+83  
 Line 4  
 Sta. 0+00 Line 6  
 Const. Sid. M.H.  
 Type "R" or "C"

Sta. 8+86  
 Line 4  
 Sta. 0+00 Line 7  
 Const. Sid. M.H.  
 Type "R" or "C"

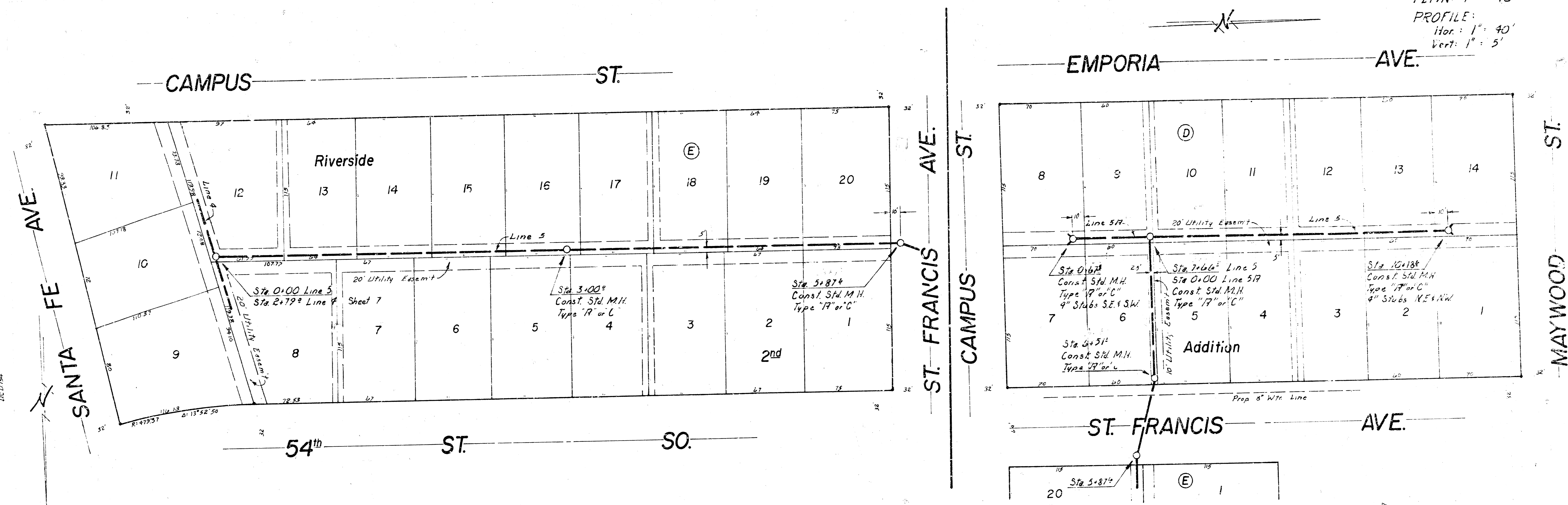
Sta. 0+00 Line 4  
 Sta. 8+86 Line 4  
 Const. Sid. M.H.  
 Type "R" or "C"  
 4' Slabs N.E. & S.W.



Lot 12, Main 12 SOUTHWEST INTERCEPTOR  
 Proj No. 468-76-245-80761-000-000-001  
 Sheet 1 of 12



SCALE  
 PLAN: 1" = 40'  
 PROFILE:  
 Hor: 1" = 40'  
 Vert: 1" = 5'



Sta. 0+00 Line 5  
 Sta. 2+72 Line 4  
 Sheet 7

Sta. 3+00  
 Const. Std. M.H.  
 Type "R" or "C"

Sta. 5+87  
 Const. Std. M.H.  
 Type "R" or "C"

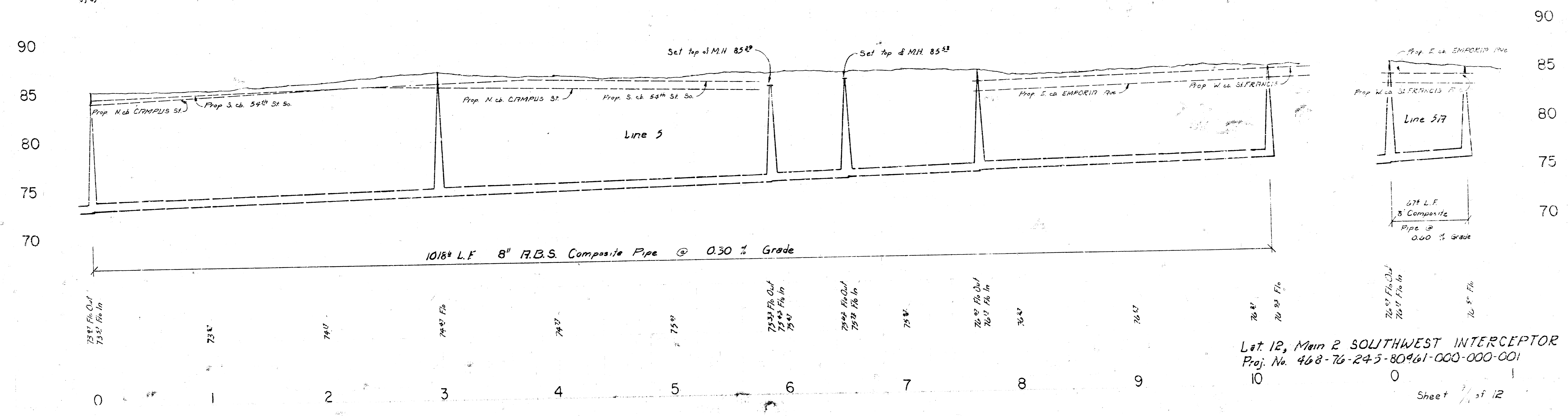
Sta. 6+51  
 Const. Std. M.H.  
 Type "R" or "C"

Sta. 7+66 Line 5  
 Sta. 0+00 Line 5  
 Const. Std. M.H.  
 Type "R" or "C"

Sta. 10+18  
 Const. Std. M.H.  
 Type "R" or "C"  
 4 Stubs N.E. M.H.

Sta. 0+00 Line 5  
 Sta. 7+66 Line 5

Sta. 0+00  
 Const. Std. M.H.  
 Type "R" or "C"  
 4 Stubs N.E. M.H.

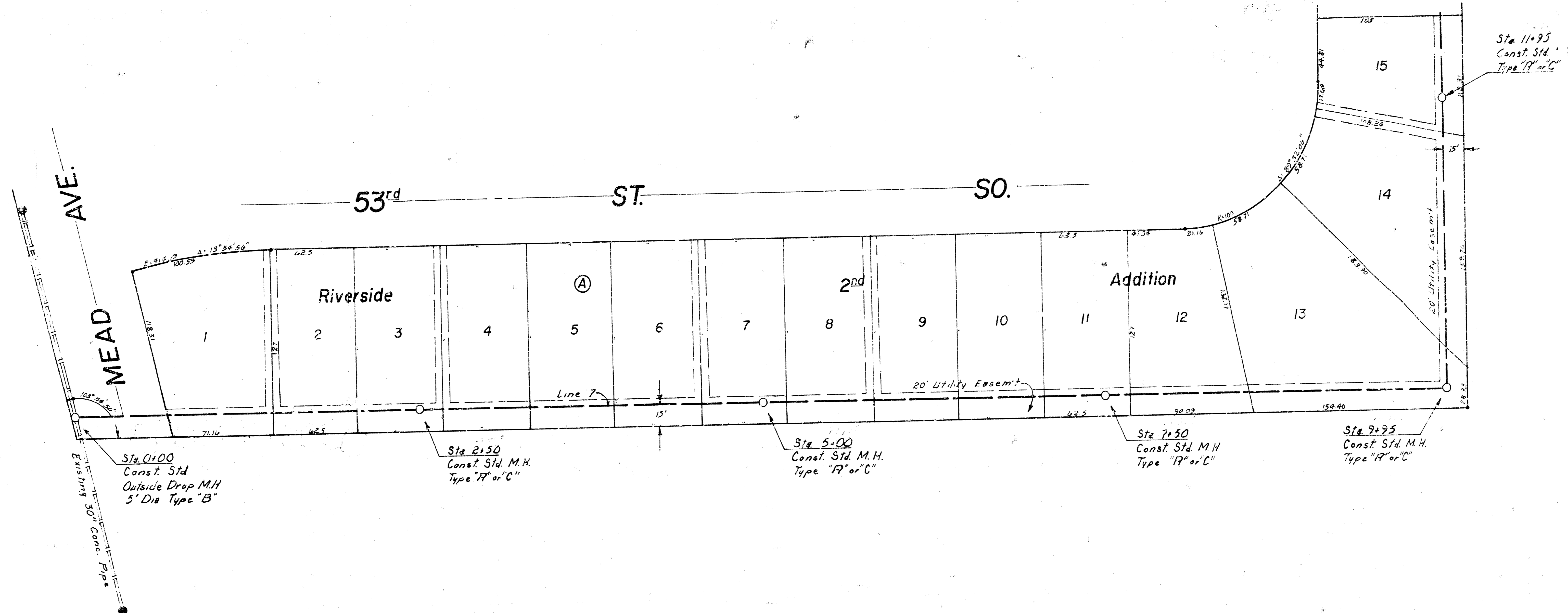


Let. 12, Main 2 SOUTHWEST INTERCEPTOR  
 Proj. No. 468-76-245-80961-000-000-001

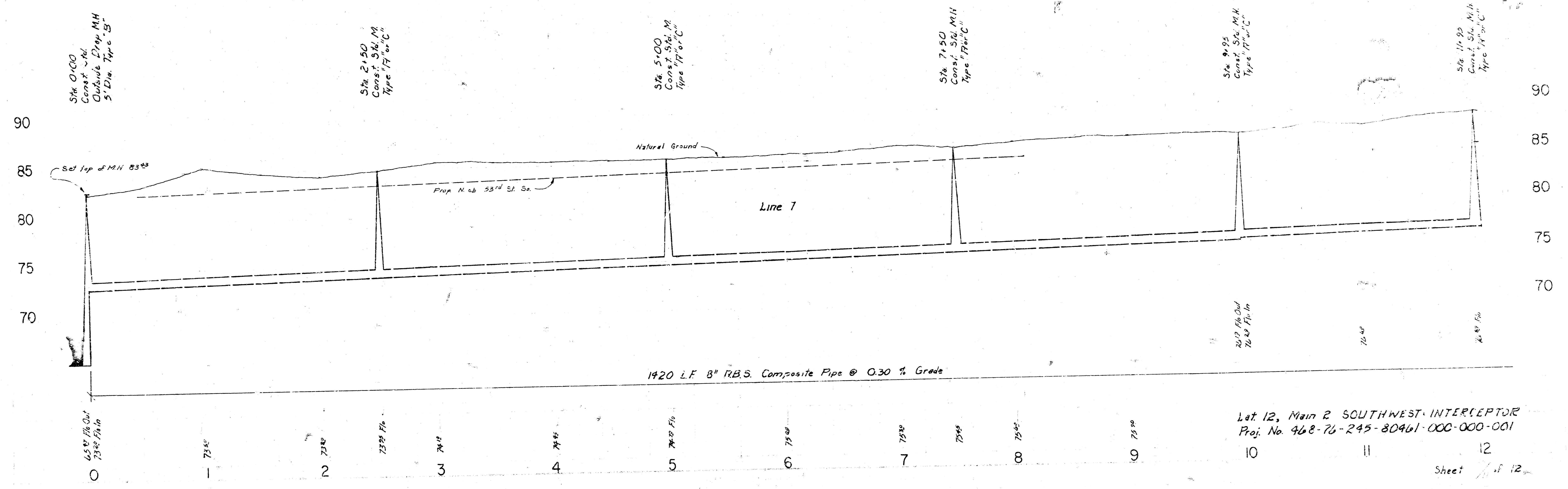
Sheet 12 of 12

DR. CULLER  
IR. MERRILLAND  
5/17/8

D.C.D.M.

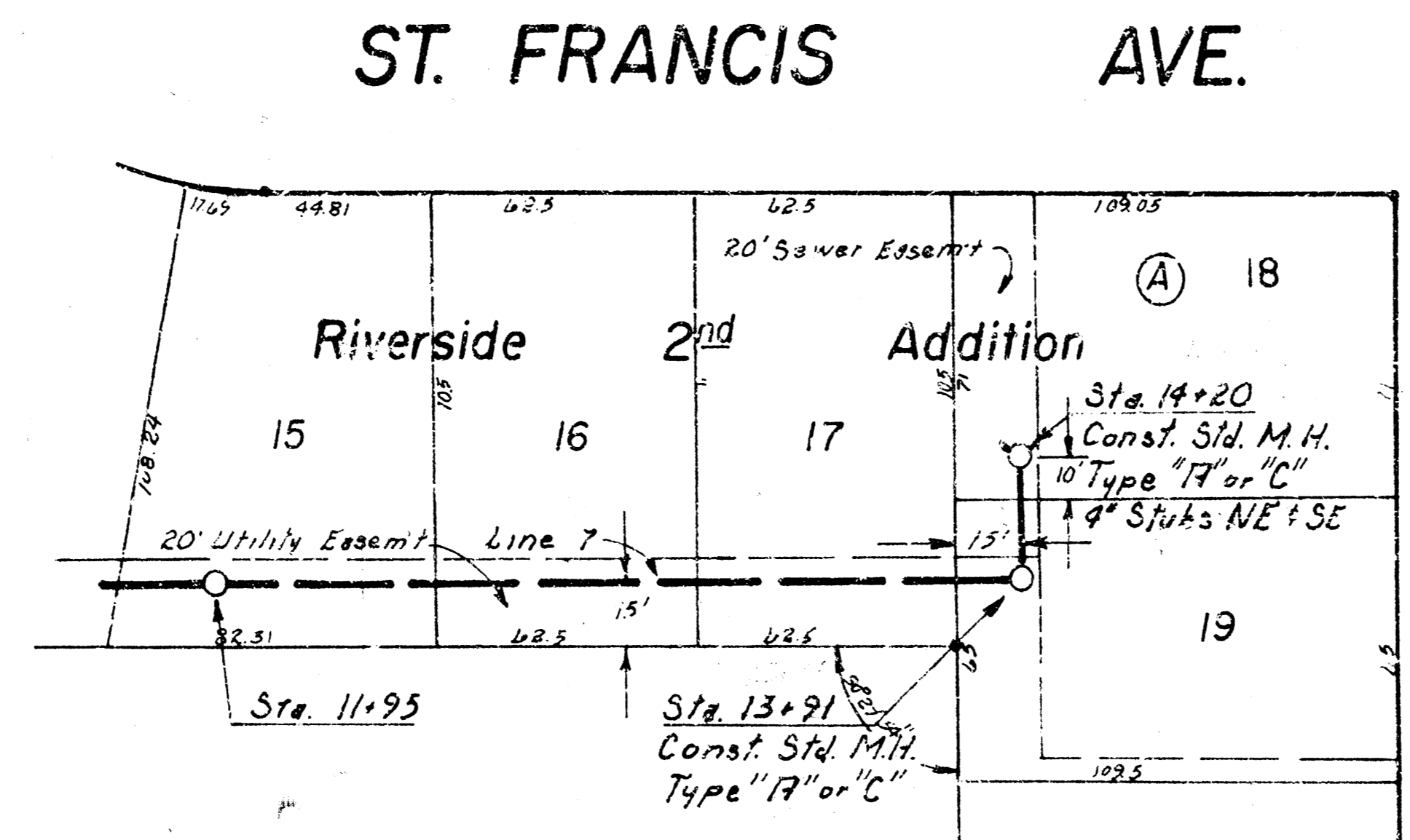


SCALE  
 PLAN: 1" = 40'  
 PROFILE: 1" = 40'  
 Hor: 1" = 40'  
 Vert: 1" = 5'

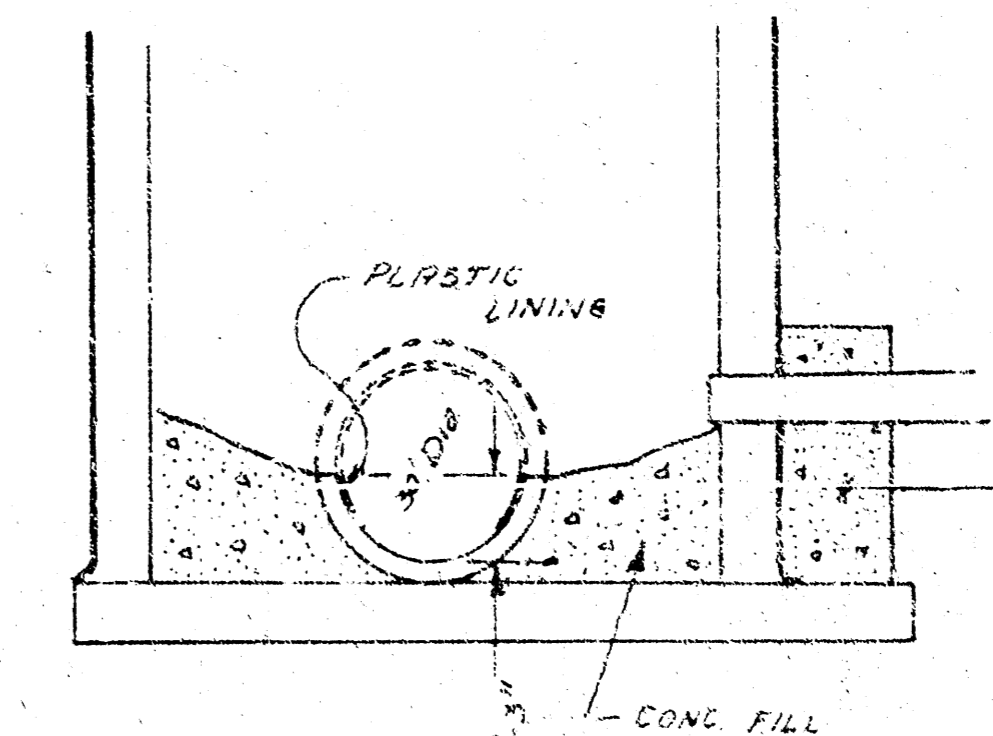


J.D. McFarland  
 5/17/80

SCALE  
 PLAN: 1" = 40'  
 PROFILE:  
 Hor: 1" = 40'  
 Vert: 1" = 5'

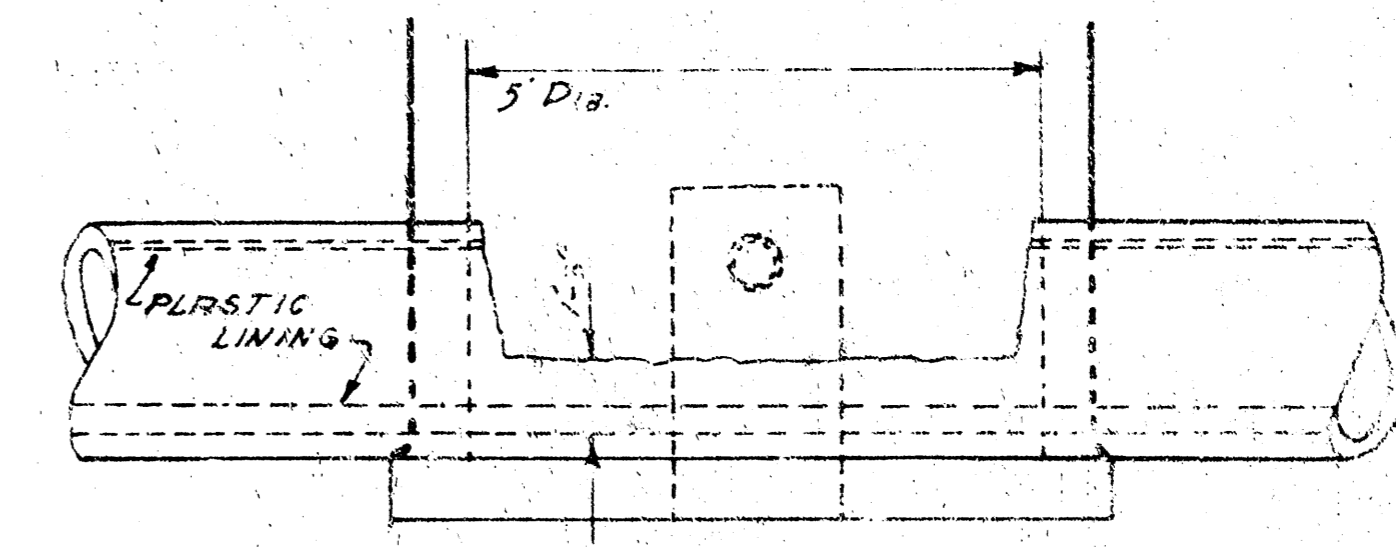


MAYWOOD ST.



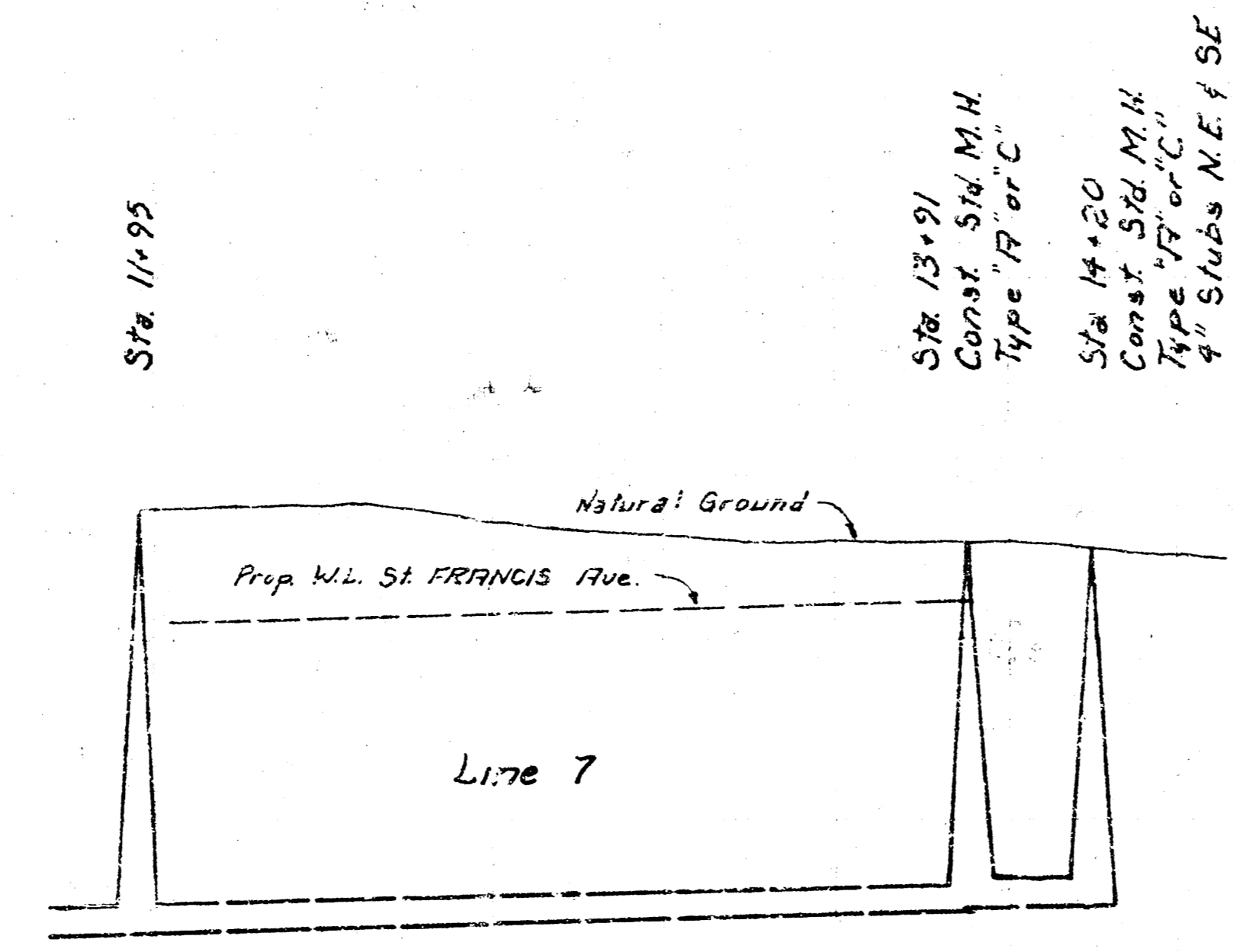
Note:  
 All exposed conc. pipe surface to be protected with Plastic lining approved by the Field Engineer.  
 Method of eroding top 1" of 50" RCP is to be approved by the Field Engineer.

SECTION  
 Sta. 0+00  
 Std. M.H. Type "B" 5' Dia.



Note:  
 Outside of trench manhole at end shall be given two coats of Bitumastic Super Service Coak as manufactured by Koppers Chemicals and Coatings or an approved equal. Application shall be according to manufacturer's recommendations.  
 Wye-Bond Bentonite as manufactured by Archer Daniels Midland Co. or an approved equal shall be mixed with the backfill material lying below water table elevation of the manhole location at Sta. 0+00. Approximately 90 pounds of Bentonite is to be uniformly mixed with the backfill material.

90  
 85  
 80  
 75  
 70



29 L.F.  
 8" R.B.B.  
 Composite  
 Pipe  
 @ 0.30%  
 Grade

13+91 L.F. 8" R.B.B. Composite Pipe @ 0.30% Grade

12      13      14      15  
 7725' Elev.      7720' Elev.      7715' Elev.      7710' Elev.

Lot 12, Main 2 SOUTHWEST INTERCEPTOR  
 Proj. No. 468-76-245-80461-000-001