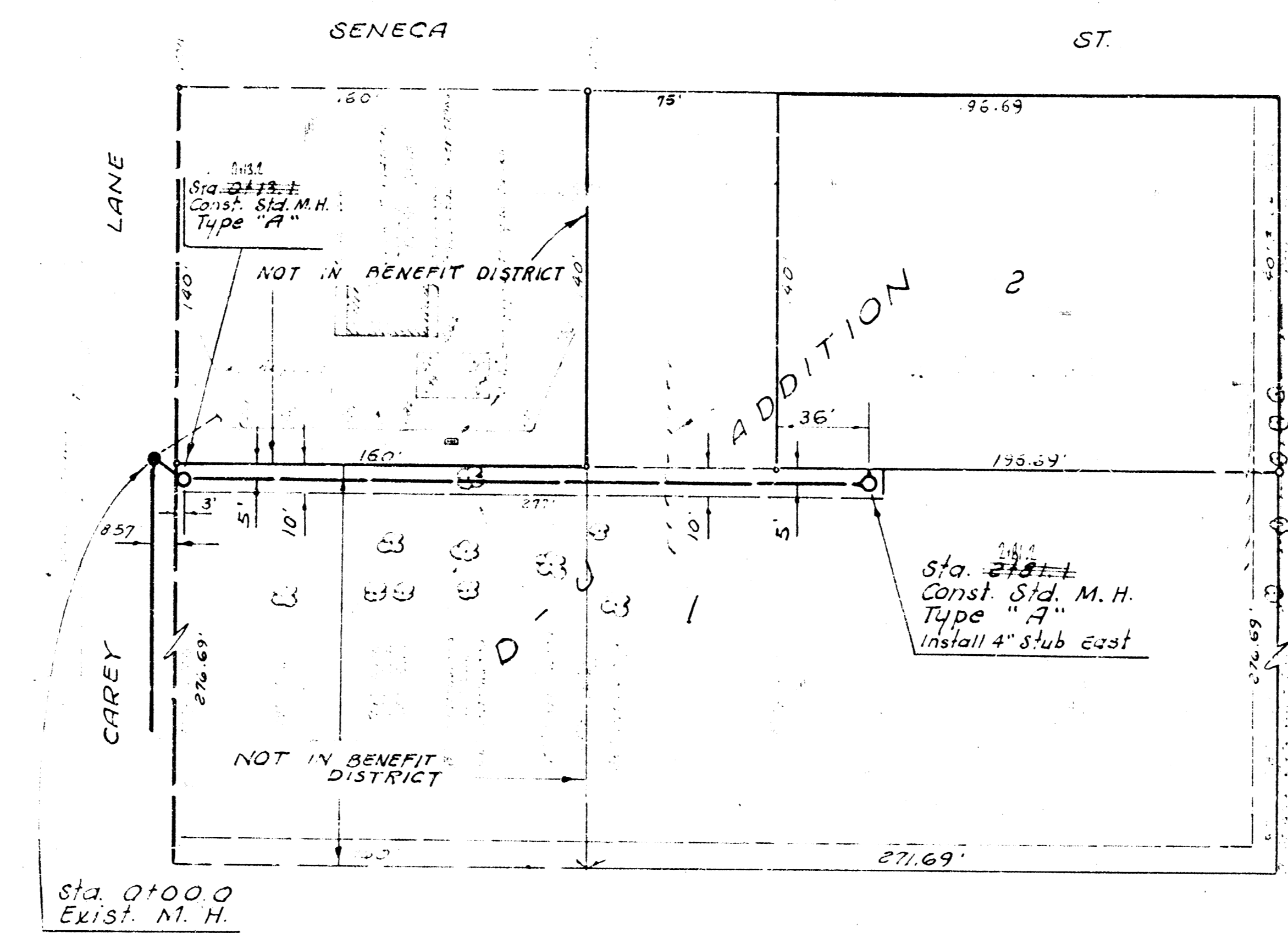
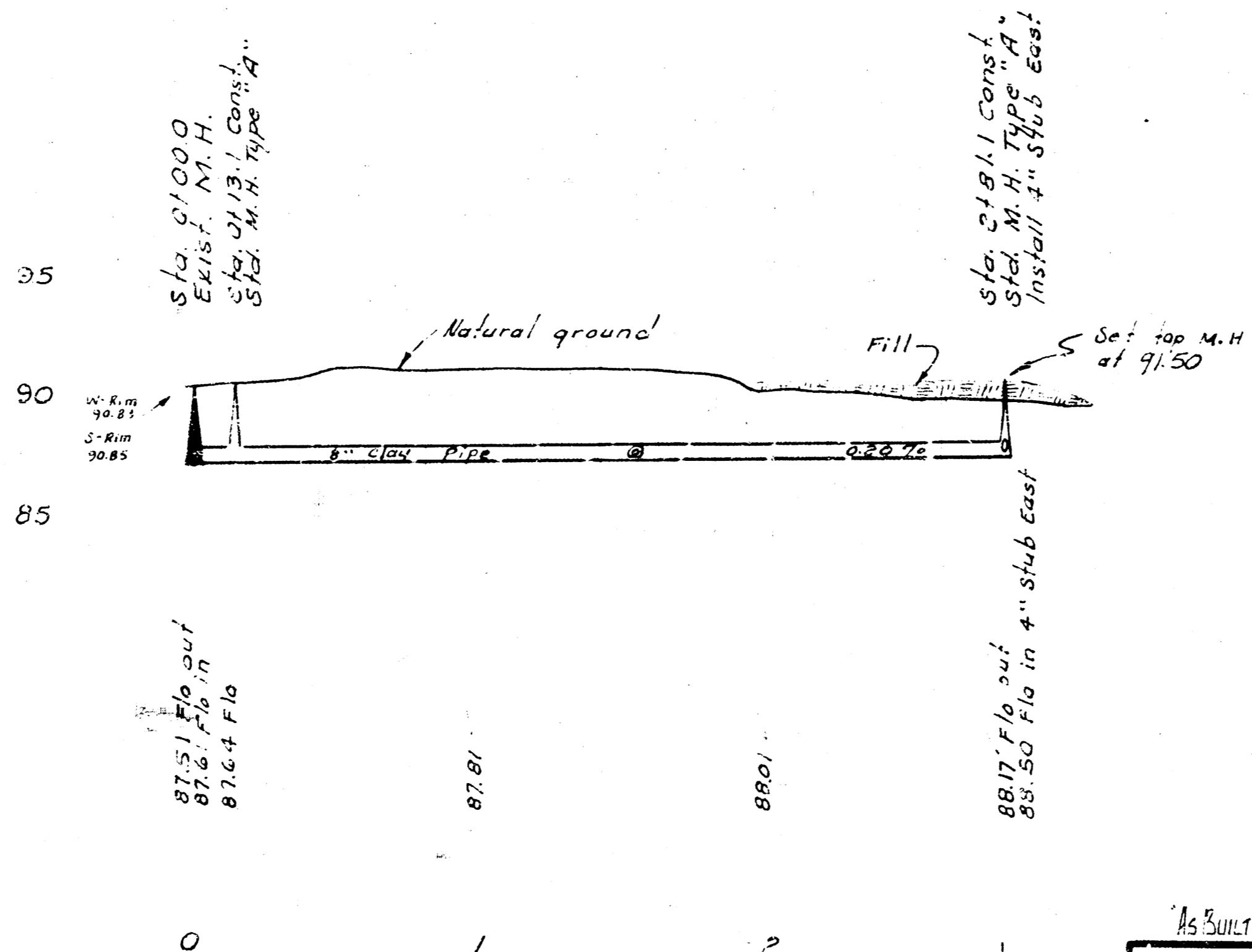


B.M. 9223 "X" in conc. on S-end of wing wall
 @ N. end of bridge span on W-side of
 Seneca & Carey Lane.

Plan Scale 1" = 40'
 Profile Scale 1" = 10' Vert.



NOTE: Sewer pipe must have 30" cover.



AS BUILT AND PERMANENTS IN S.S.#11 JK

LAT. 12, MAIN 3, S.W. INTERCEPTOR SEWER
 CITY OF WICHITA, KANSAS
 R. W. LINN - CITY ENGINEER
 Sept. 1972 PROJECT NO. DBKLS72039

123
 Standard by Reference