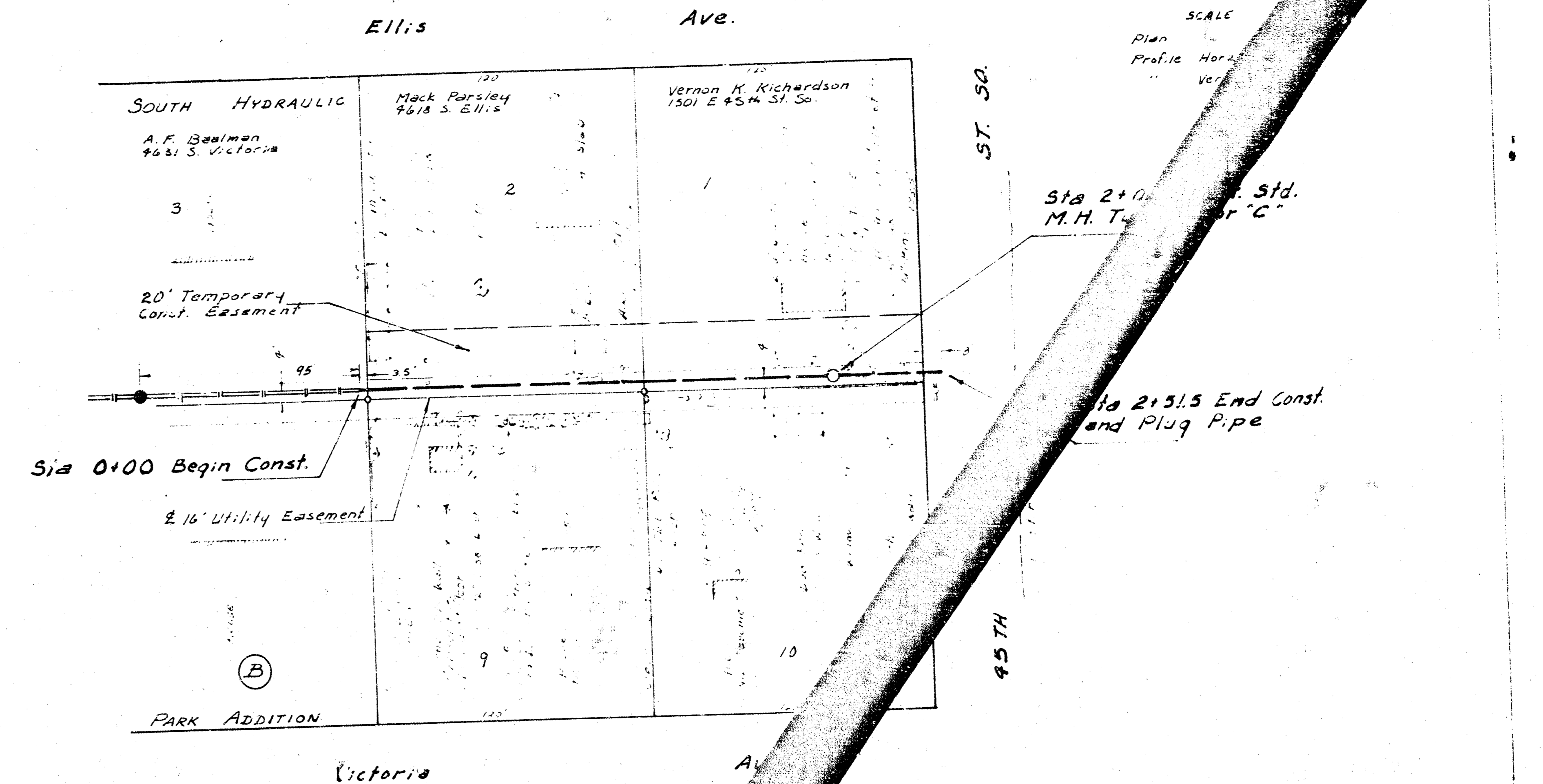
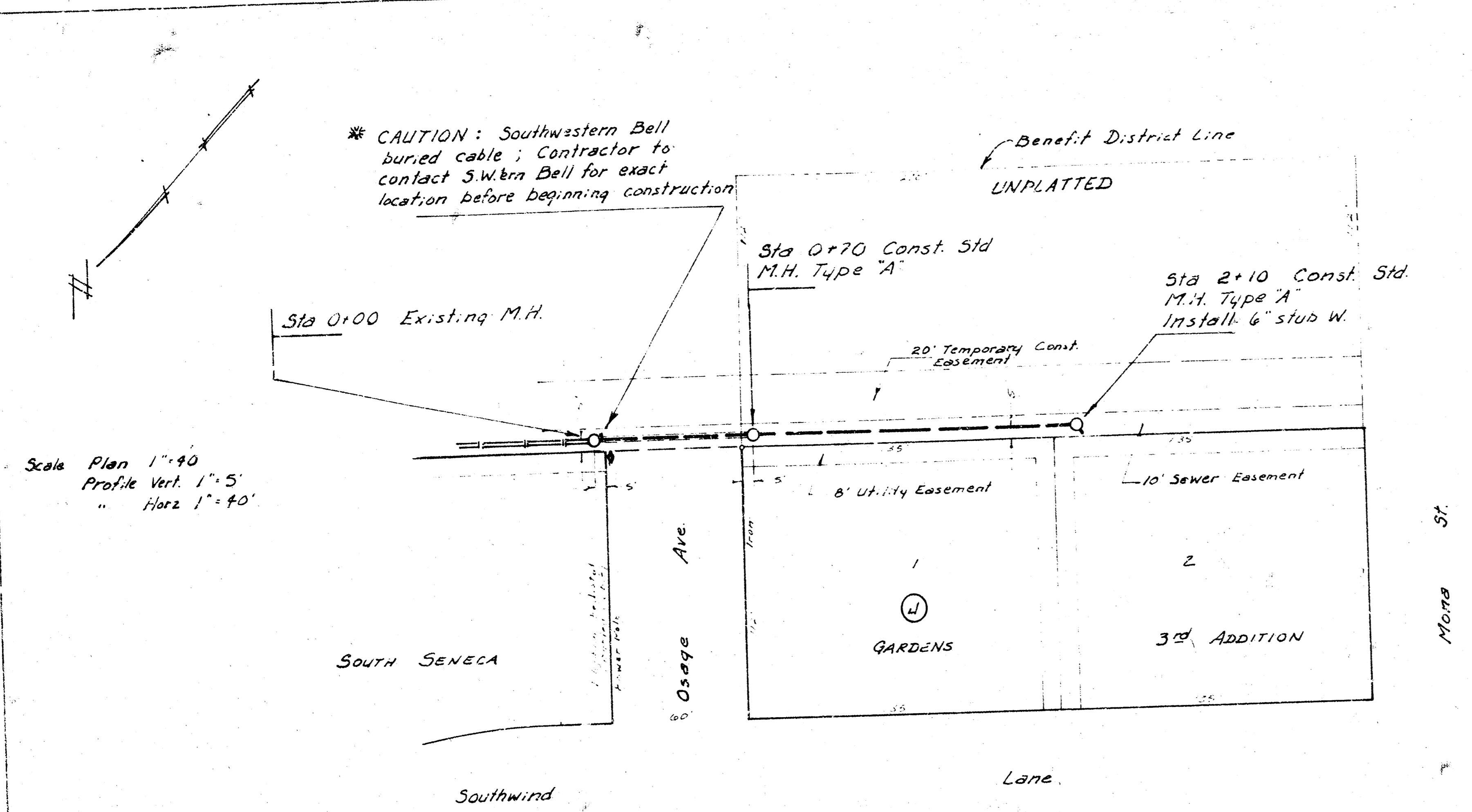
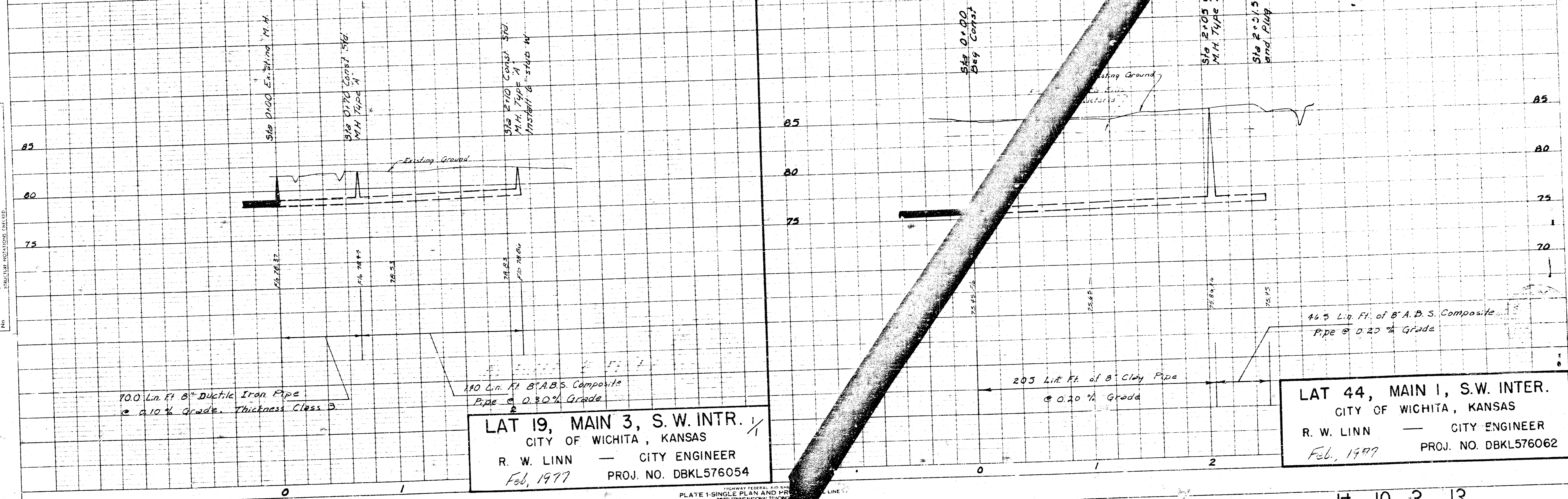


NOTE: CONTRACTOR IS TO CONTACT MR. RICHARDSON WHOSE PHONE NUMBER IS 524-0881 AND DISCUSS WITH HIM THE PROBABLE EXTENT OF DAMAGE TO TREES ON HIS PROPERTY AS A RESULT OF THE SEWER CONSTRUCTION PRIOR TO STARTING WORK.



B.M. 84.73 NW. corner, bottom of concrete step, House # 5339 Oak Ave., being SE corner of Oak & Osage.
 B.M. 85.62 R.R. spike, NW. face of Power Pole, East side of Sycamore, 135' N of S1/4 S0.
 B.M. 83.90 NE. corner concrete porch, House # 801 W 52nd St. S0

B.M. 85.57 Step Bench on S.S. power pole on NW. corner Ellis & 44th St. S0



LAT 19, MAIN 3, S.W. INTR.
 CITY OF WICHITA, KANSAS
 R. W. LINN — CITY ENGINEER
 Feb, 1977 PROJ. NO. DBKL576054

LAT 44, MAIN 1, S.W. INTER.
 CITY OF WICHITA, KANSAS
 R. W. LINN — CITY ENGINEER
 Feb, 1977 PROJ. NO. DBKL576062