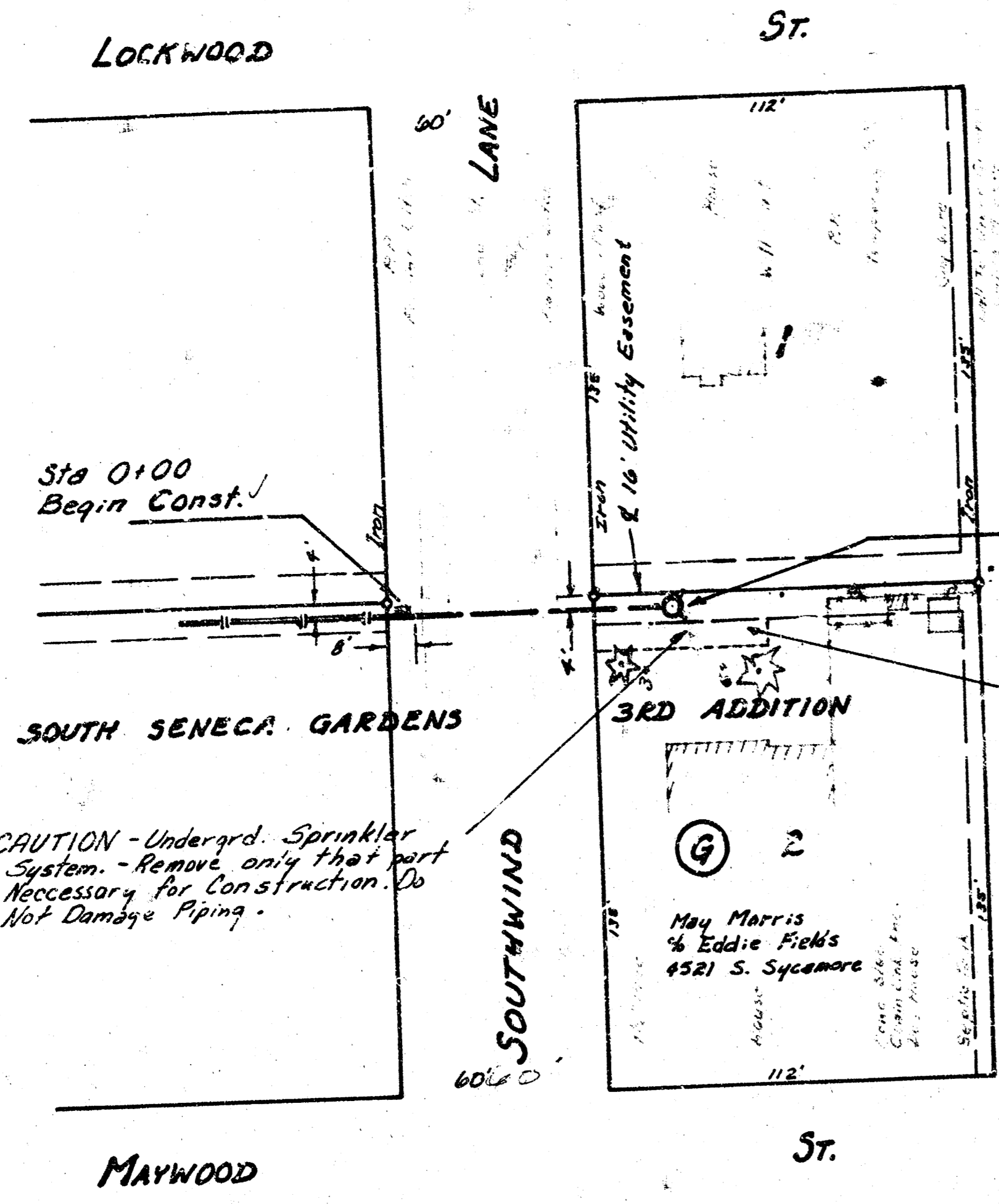


PLAN
 DATE: 8/12/89
 DRAWN BY: R. Loomis
 CHECKED BY: J. Langley

B.M. 85.30 NE Corner of Cont. porch & House # 5314 S. Osage
 B.M. 81.19 R.R. spike in S. side of L.P. on the W. corner of the intersection of Lockwood St & Southwind St.

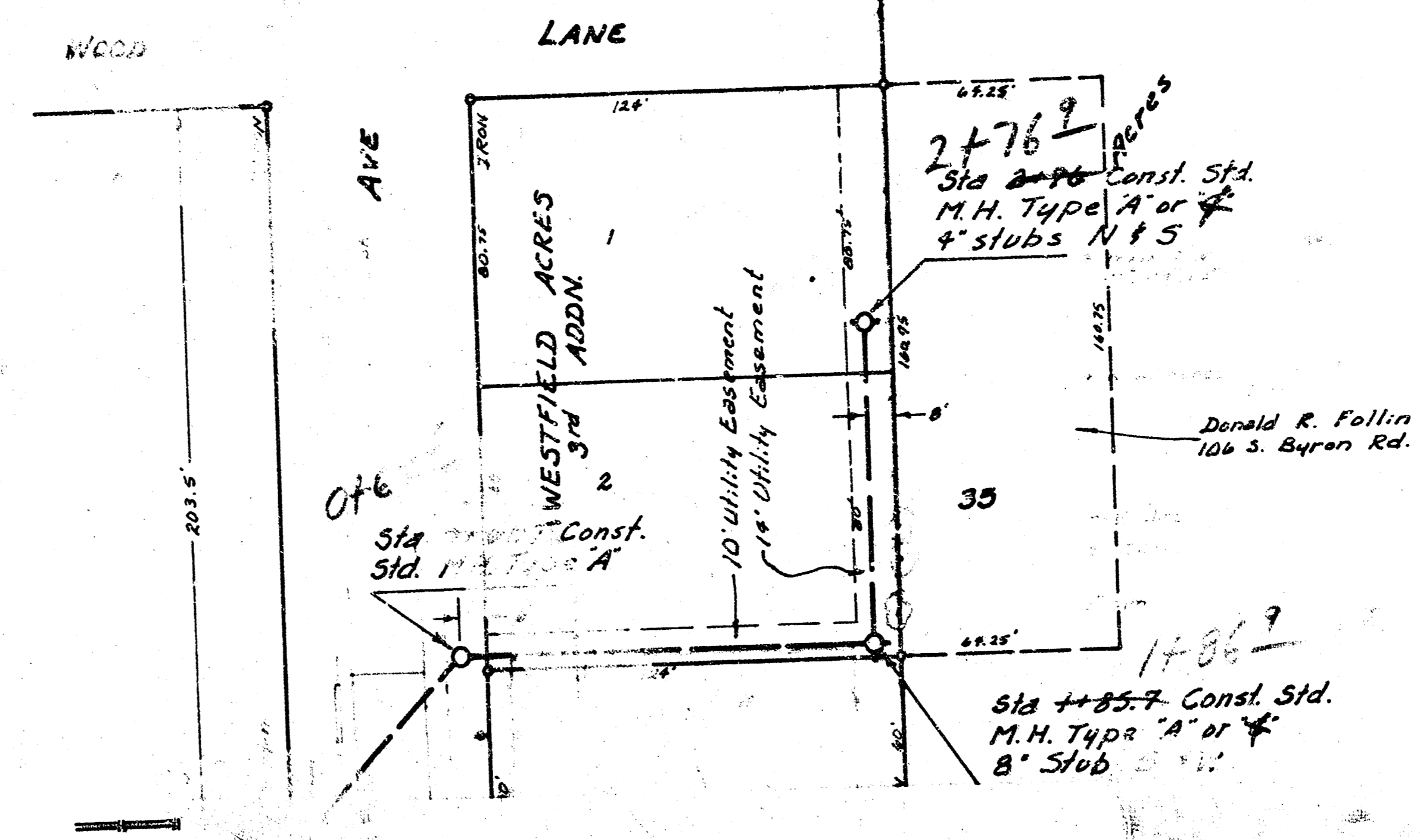


Scale Plan 1" = 40'
 Profile 1" = 40' Horiz.
 1" = 5' Vert.

THE CONTRACTOR SHALL BE RESPONSIBLE FOR PRESERVING PROPERTY IRONS. THE CONTRACTOR SHALL BE REQUIRED TO RE-ESTABLISH ANY PROPERTY IRONS WHICH ARE DAMAGED OR DESTROYED BY HIS CONSTRUCTION OPERATIONS. SUCH IRONS SHALL BE RE-ESTABLISHED BY A LICENSED LAND SURVEYOR OR A LICENSED PROFESSIONAL ENGINEER IN ACCORDANCE WITH STATE LAWS.

CAUTION - Undergrd. Sprinkler System - Remove only that part Necessary for Construction. Do Not Damage Piping.

As Built
 J.H.
 1/83

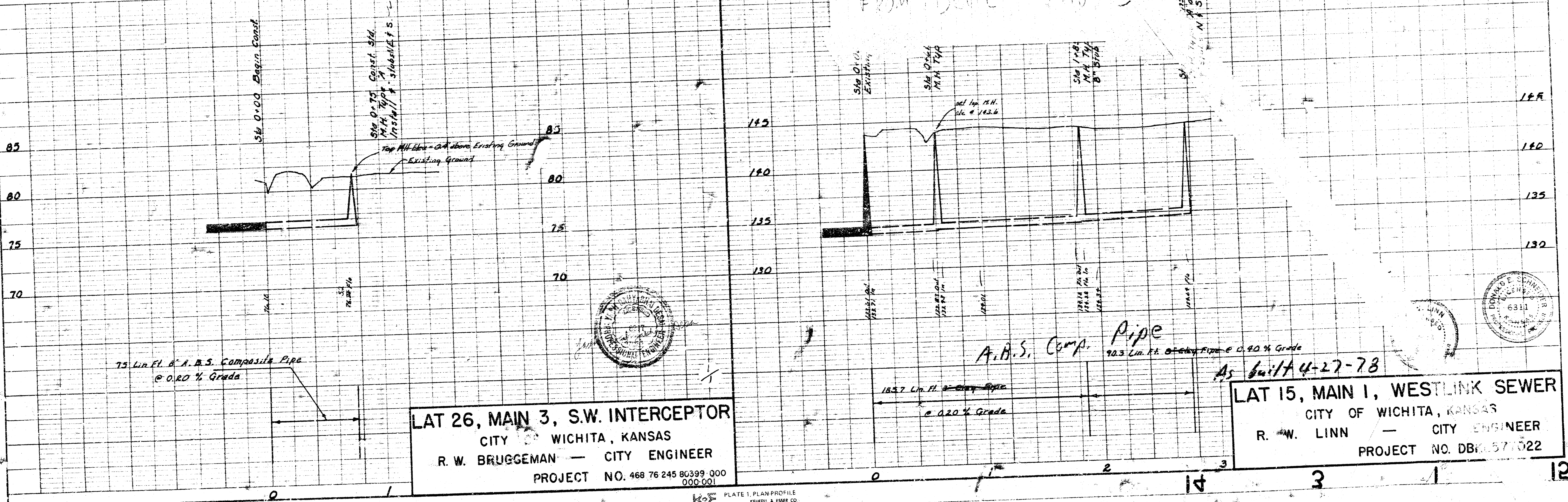


Scale Plan 1" = 40'
 Profile 1" = 40' Horiz.
 1" = 5' Vert.

B.M. 143.41 City Sid Disc. 392'E & 272'S of E of Tyler Road & Maps
 B.M. 145.04 R.R. Spike in SE side I.P.P. approx. 75' W & 5' N of the intersection of the E Wood St. & N. edge of Douglas.

ONLY FROM BLUE PRINTS

PROFILE
 DATE: 8/12/89
 DRAWN BY: R. Loomis
 CHECKED BY: J. Langley



LAT 26, MAIN 3, S.W. INTERCEPTOR
 CITY OF WICHITA, KANSAS
 R. W. BRUGGEMAN - CITY ENGINEER
 PROJECT NO. 468 76 245 80399 000
 000-001

LAT 15, MAIN 1, WESTLINK SEWER
 CITY OF WICHITA, KANSAS
 R. W. LINN - CITY ENGINEER
 PROJECT NO. DBR 6571022