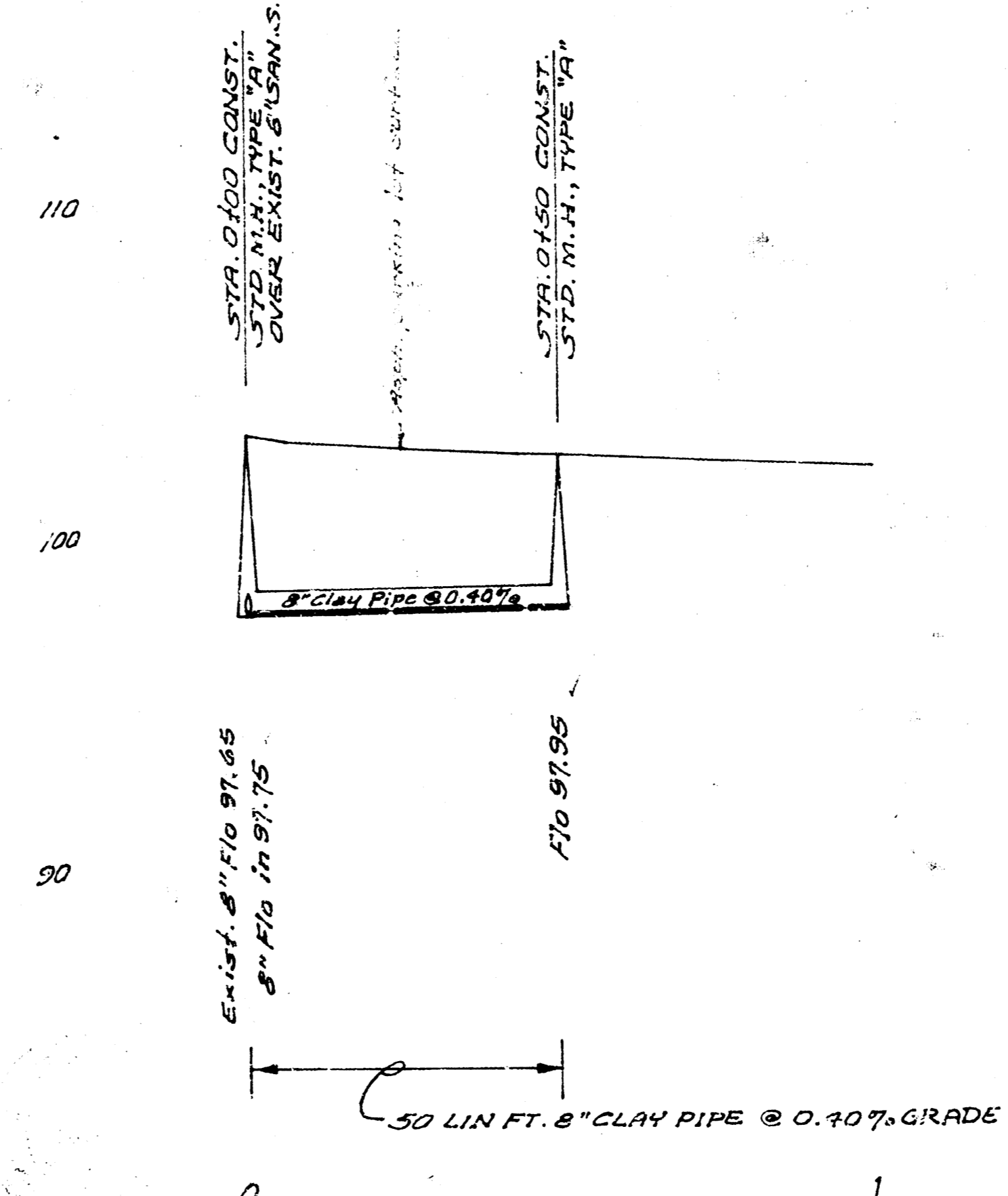
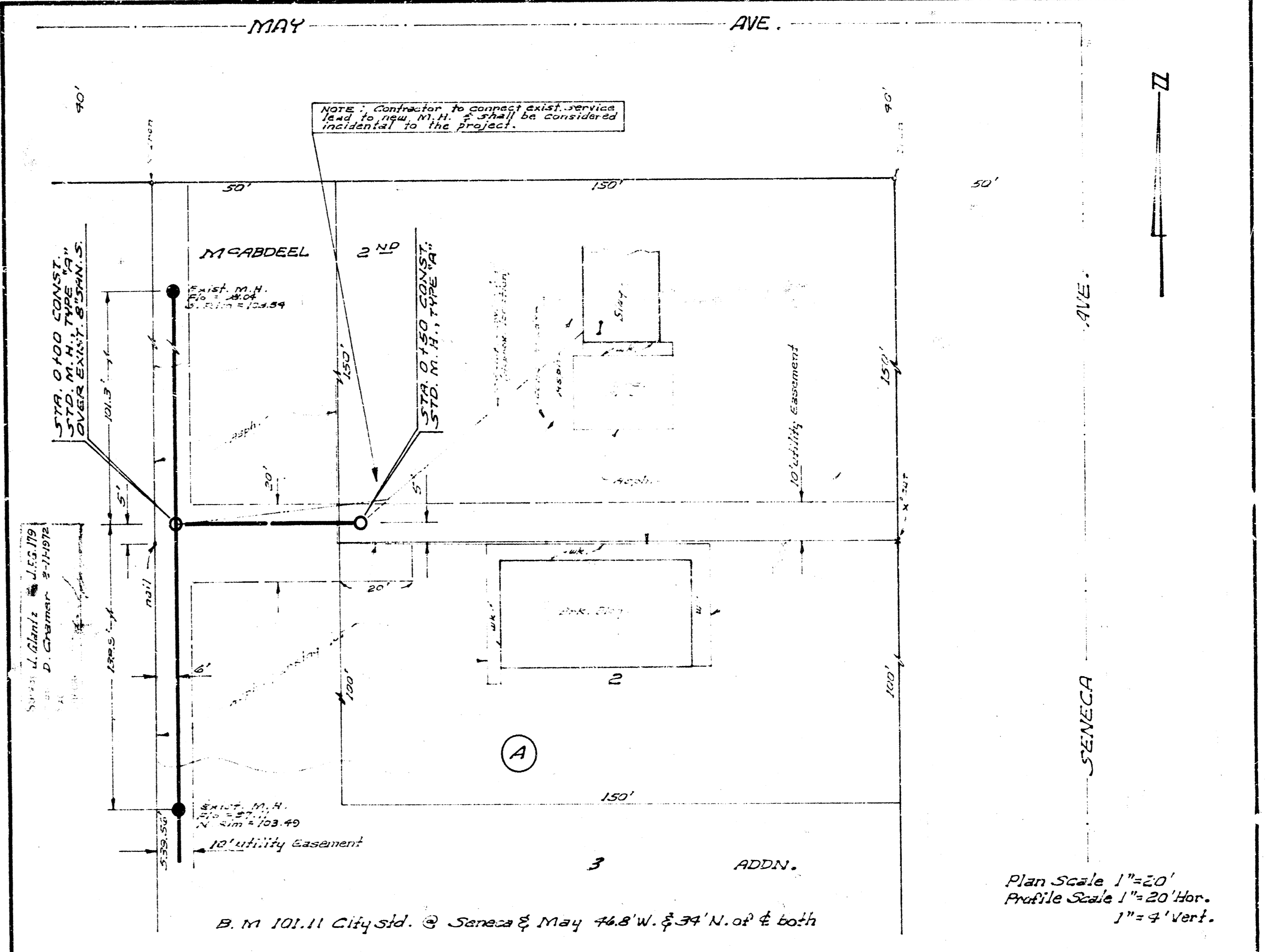


LAT. 3, MAIN 4, S.W. INTERCEPTOR
CITY OF WICHITA, KANSAS
R.W. LINN, CITY ENGINEER
PROJ. NO. DBKL571023
DATE: 9-1-71



EXTENSION TO
LAT. 42, SUB. 2, S.S. 22
CITY OF WICHITA, KANSAS
R.W. LINN, CITY ENGINEER
PROJ. NO. KA-263500
DATE: 2-11-72