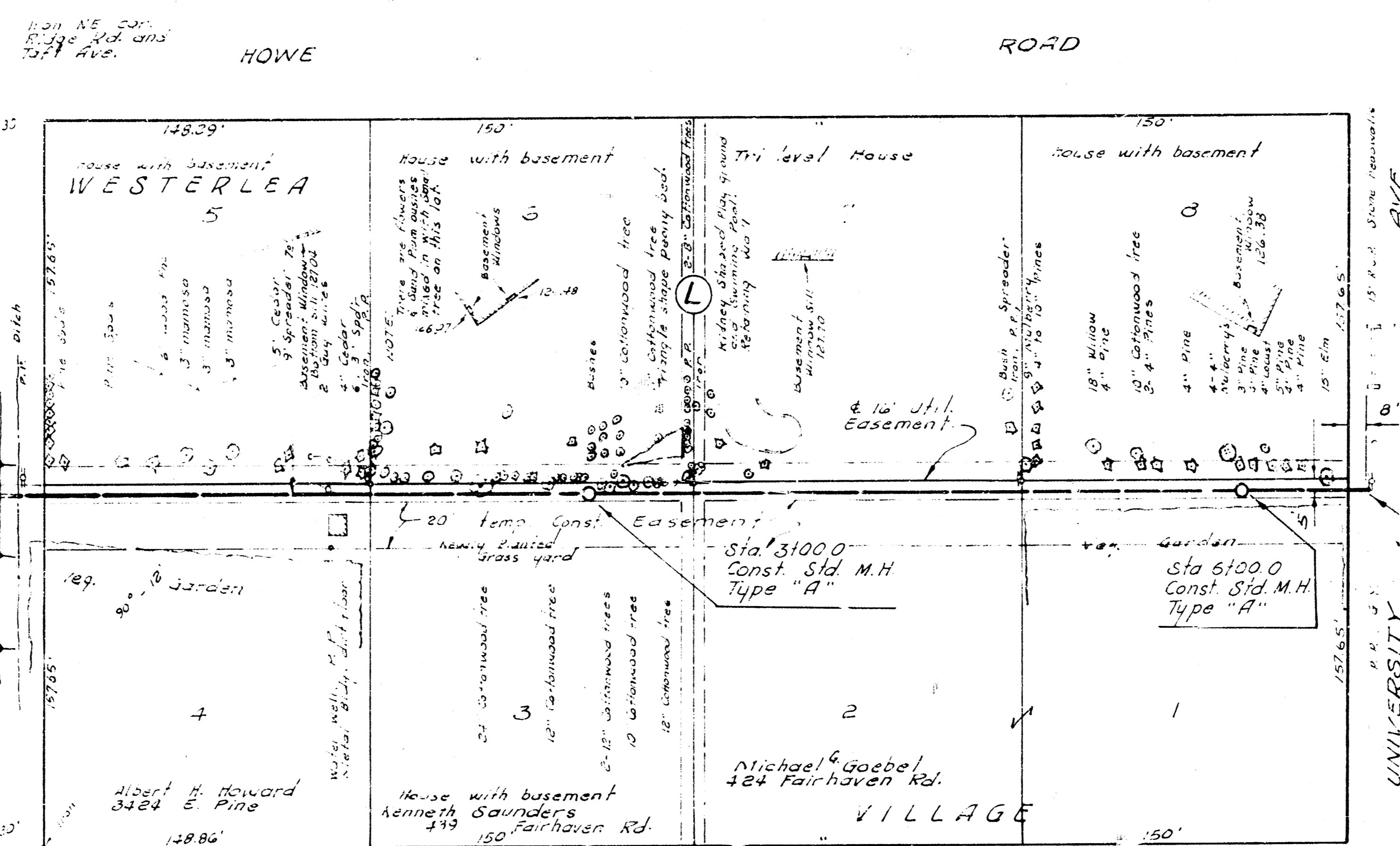
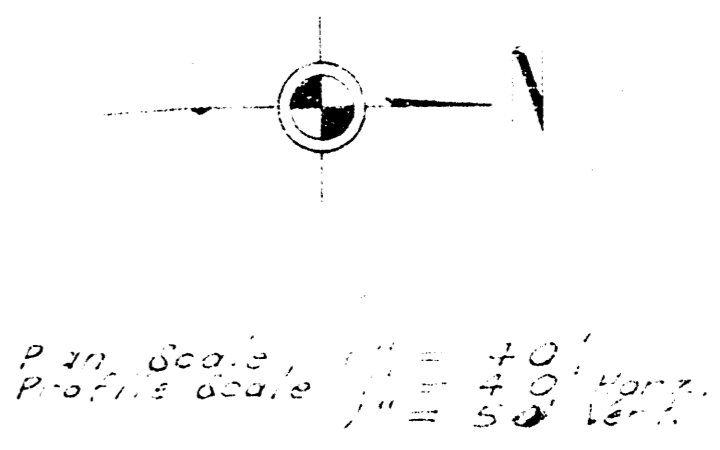


B.M. 13000 R.R. Spk. S-side R.R. on NE cor. 3rd & Railroad.
 B.M. 10410 R.R. Spk. N-side R.R. near SE cor. 1st S. Bk. L (N-side 10th 1/2 Bk. E of Howe Rd)



1101 S.E. cor. 1st S. Bk. C. Westerlea Village.
 1101 S.E. cor. 1st S. Bk. C. Westerlea Village.
 1101 S.E. cor. 1st S. Bk. C. Westerlea Village.



Sta. 01000
 Exist. manhole
 Exist. 40"-8" Stub No.

Sta. 61566
 End 8" Clay Pipe.
 Plug Pipe.

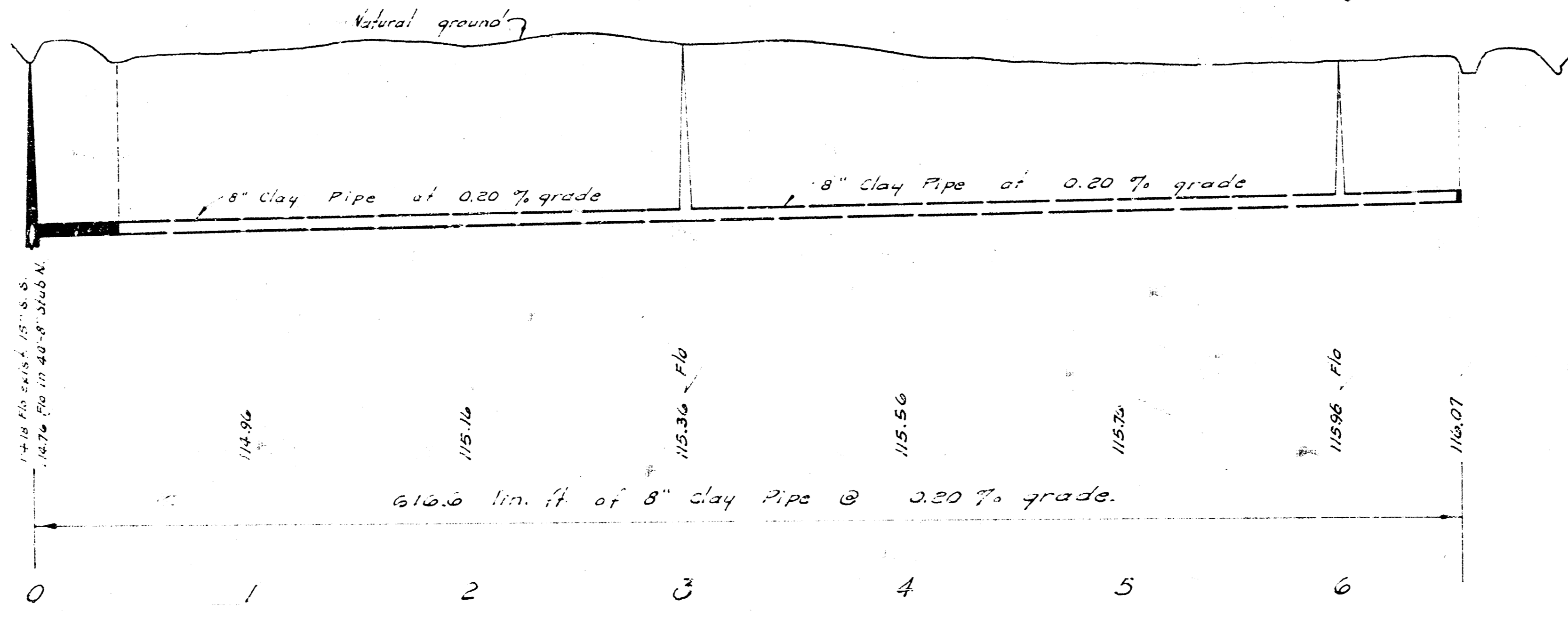
Sta. 01000 Exist. M.H.
 Exist. 40"-8" Stub No.
 Sta. 01400 begin project.

Sta. 3100 Const. M.H. Type "A"

Sta. 6100 Const. M.H. Type "A"

Sta. 61566 End 8" Clay Pipe. Plug Pipe.

125
 120
 115
 110



LAT. 4, MAIN 4, S. W. INTERCEPTOR SEWER
 CITY OF WICHITA, KANSAS
 R. W. LINN -- CITY ENGINEER
 NOV. 1971 PROJECT NO. DBKL 571026