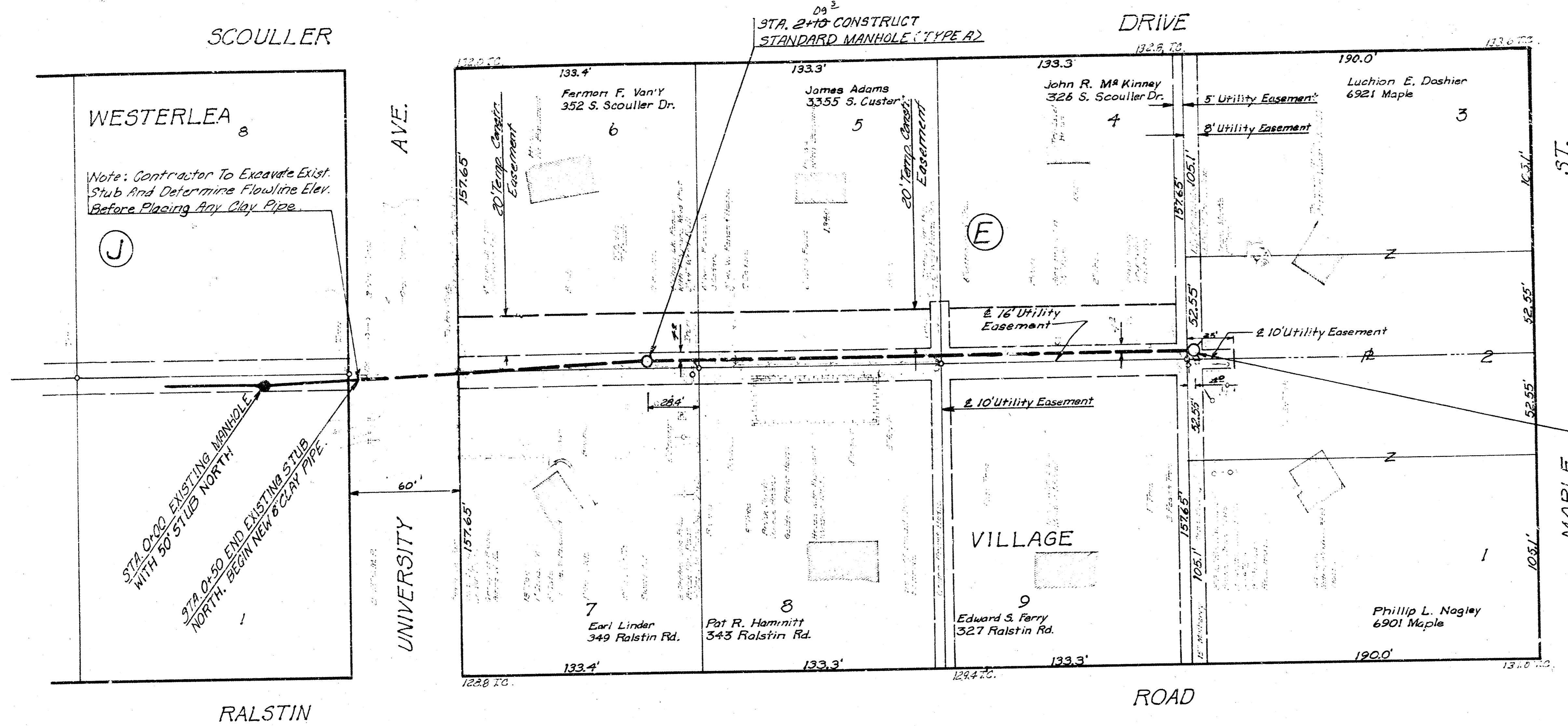


B. M. 130.58 R. R. Spk. S.- Side P.P. on N. E. cor. Taft & Ralstin.

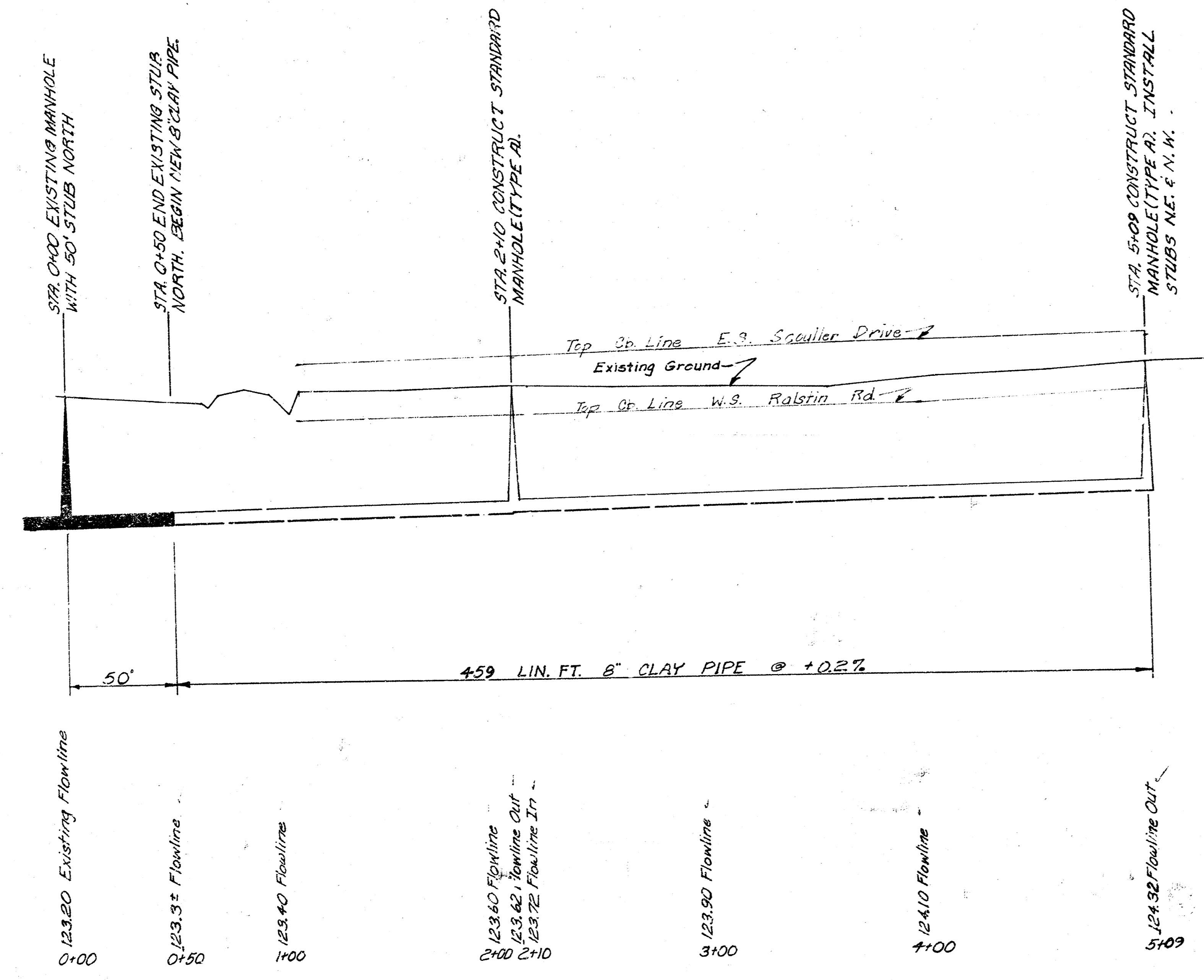
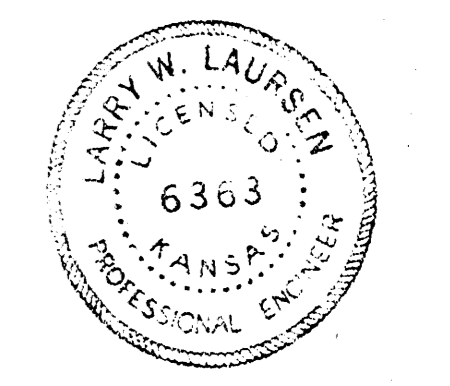


Note: Contractor To Excavate Exist. Stub And Determine Flowline Elev. Before Placing Any Clay Pipe.

Note: All Property Irons That May Be Disturbed Shall Have Tags Taken To Them Where They May Be Replaced If Disturbed.

STA 5+09 CONSTRUCT STANDARD MANHOLE (TYPE A). INSTALL STUBS N.E. & N.W.

PLAN SCALE : 1"=40'  
PROFILE SCALE : 1"=40' HORIZ.  
1"=5' VERT.



"As Built" Final Measurements M-103

LAT. 5, MAIN 4, S. W. INTERCEPT SEWER  
 CITY OF WICHITA, KANSAS  
 R. W. LINN — CITY ENGINEER  
 SEPT. 1972 PROJECT NO. DBKL 571028

42  
 116 CRES. 1/2" DIA. 10'  
 115 1/2" DIA. 10'  
 114 1/2" DIA. 10'  
 113 1/2" DIA. 10'  
 112 1/2" DIA. 10'  
 111 1/2" DIA. 10'  
 110 1/2" DIA. 10'  
 109 1/2" DIA. 10'  
 108 1/2" DIA. 10'  
 107 1/2" DIA. 10'  
 106 1/2" DIA. 10'  
 105 1/2" DIA. 10'  
 104 1/2" DIA. 10'  
 103 1/2" DIA. 10'  
 102 1/2" DIA. 10'  
 101 1/2" DIA. 10'  
 100 1/2" DIA. 10'  
 99 1/2" DIA. 10'  
 98 1/2" DIA. 10'  
 97 1/2" DIA. 10'  
 96 1/2" DIA. 10'  
 95 1/2" DIA. 10'  
 94 1/2" DIA. 10'  
 93 1/2" DIA. 10'  
 92 1/2" DIA. 10'  
 91 1/2" DIA. 10'  
 90 1/2" DIA. 10'  
 89 1/2" DIA. 10'  
 88 1/2" DIA. 10'  
 87 1/2" DIA. 10'  
 86 1/2" DIA. 10'  
 85 1/2" DIA. 10'  
 84 1/2" DIA. 10'  
 83 1/2" DIA. 10'  
 82 1/2" DIA. 10'  
 81 1/2" DIA. 10'  
 80 1/2" DIA. 10'  
 79 1/2" DIA. 10'  
 78 1/2" DIA. 10'  
 77 1/2" DIA. 10'  
 76 1/2" DIA. 10'  
 75 1/2" DIA. 10'  
 74 1/2" DIA. 10'  
 73 1/2" DIA. 10'  
 72 1/2" DIA. 10'  
 71 1/2" DIA. 10'  
 70 1/2" DIA. 10'  
 69 1/2" DIA. 10'  
 68 1/2" DIA. 10'  
 67 1/2" DIA. 10'  
 66 1/2" DIA. 10'  
 65 1/2" DIA. 10'  
 64 1/2" DIA. 10'  
 63 1/2" DIA. 10'  
 62 1/2" DIA. 10'  
 61 1/2" DIA. 10'  
 60 1/2" DIA. 10'  
 59 1/2" DIA. 10'  
 58 1/2" DIA. 10'  
 57 1/2" DIA. 10'  
 56 1/2" DIA. 10'  
 55 1/2" DIA. 10'  
 54 1/2" DIA. 10'  
 53 1/2" DIA. 10'  
 52 1/2" DIA. 10'  
 51 1/2" DIA. 10'  
 50 1/2" DIA. 10'  
 49 1/2" DIA. 10'  
 48 1/2" DIA. 10'  
 47 1/2" DIA. 10'  
 46 1/2" DIA. 10'  
 45 1/2" DIA. 10'  
 44 1/2" DIA. 10'  
 43 1/2" DIA. 10'  
 42 1/2" DIA. 10'  
 41 1/2" DIA. 10'  
 40 1/2" DIA. 10'  
 39 1/2" DIA. 10'  
 38 1/2" DIA. 10'  
 37 1/2" DIA. 10'  
 36 1/2" DIA. 10'  
 35 1/2" DIA. 10'  
 34 1/2" DIA. 10'  
 33 1/2" DIA. 10'  
 32 1/2" DIA. 10'  
 31 1/2" DIA. 10'  
 30 1/2" DIA. 10'  
 29 1/2" DIA. 10'  
 28 1/2" DIA. 10'  
 27 1/2" DIA. 10'  
 26 1/2" DIA. 10'  
 25 1/2" DIA. 10'  
 24 1/2" DIA. 10'  
 23 1/2" DIA. 10'  
 22 1/2" DIA. 10'  
 21 1/2" DIA. 10'  
 20 1/2" DIA. 10'  
 19 1/2" DIA. 10'  
 18 1/2" DIA. 10'  
 17 1/2" DIA. 10'  
 16 1/2" DIA. 10'  
 15 1/2" DIA. 10'  
 14 1/2" DIA. 10'  
 13 1/2" DIA. 10'  
 12 1/2" DIA. 10'  
 11 1/2" DIA. 10'  
 10 1/2" DIA. 10'  
 9 1/2" DIA. 10'  
 8 1/2" DIA. 10'  
 7 1/2" DIA. 10'  
 6 1/2" DIA. 10'  
 5 1/2" DIA. 10'  
 4 1/2" DIA. 10'  
 3 1/2" DIA. 10'  
 2 1/2" DIA. 10'  
 1 1/2" DIA. 10'  
 1/2" DIA. 10'