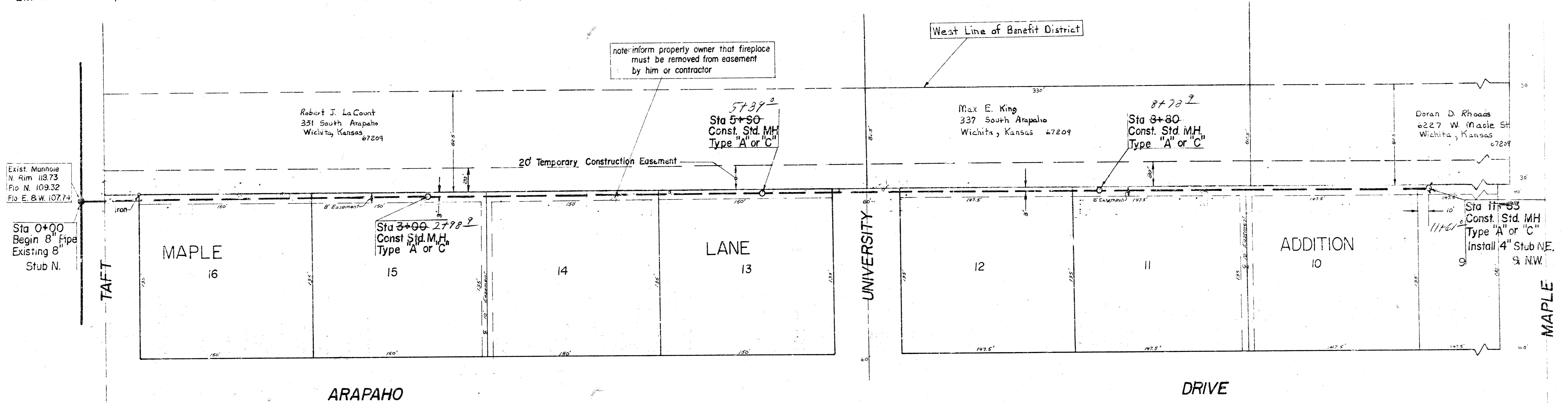
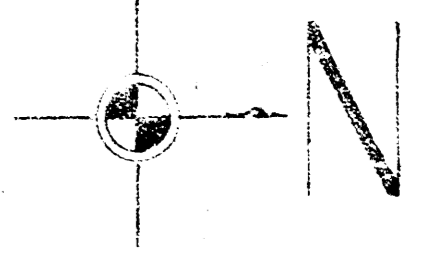
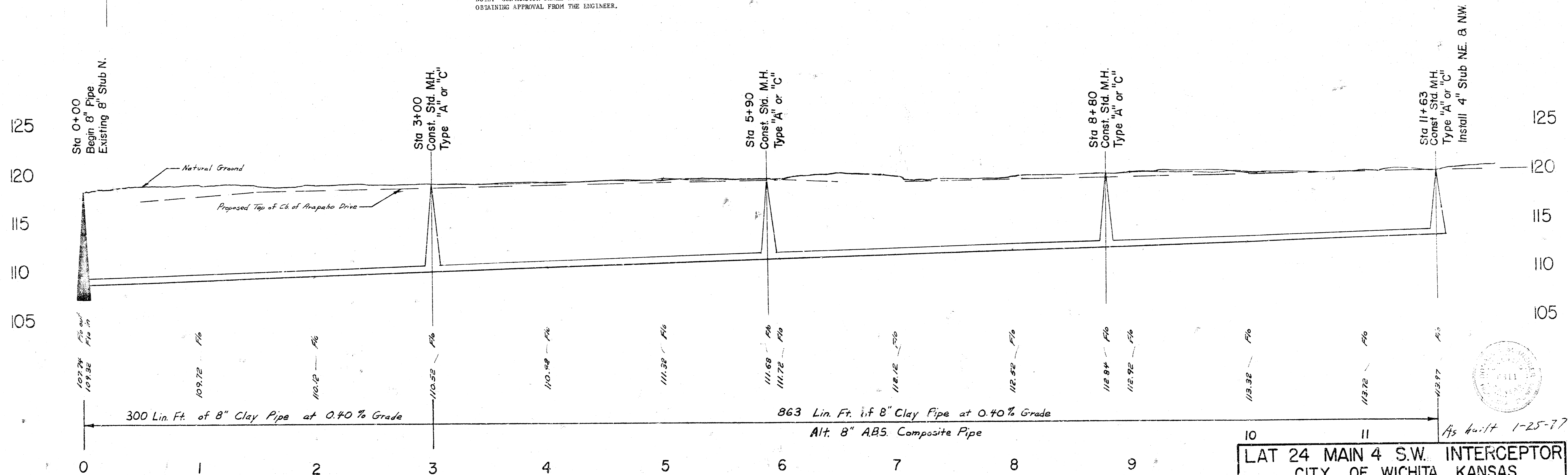


BM 121.85 City disc 337' W. & 34.3' S. of NW. cor. of N.E. 1/4, Sec. 27 T27S R1W  
 BM 120.90 R.R. spike SW. side Bell pole 30' S. of @ Maple & approx. 200' W. WL. Arapaho  
 BM 119.74 R.R. spike W. side Power pole, 150' N. of N.L. Taft & 135' W. WL. Arapaho

Plan Scale 1" = 40'  
 Profile Scale 1" = 40' Horz.  
 1" = 5' Vert.



NOTE: CONTRACTOR SHALL NOT REMOVE ANY TREES WITHOUT FIRST OBTAINING APPROVAL FROM THE ENGINEER.



LAT 24 MAIN 4 S.W. INTERCEPTOR  
 CITY OF WICHITA, KANSAS  
 R. W. LINN — CITY ENGINEER  
 Project Number DBKL576031  
 Nov 1976