

SANITARY SEWER EXTENSION

**LATERAL 40, MAIN 4,
SOUTHWEST INTERCEPTOR**

TO SERVICE LOTS 1 & 4 - THE DUGAN CENTRE -

PROJECT NUMBER

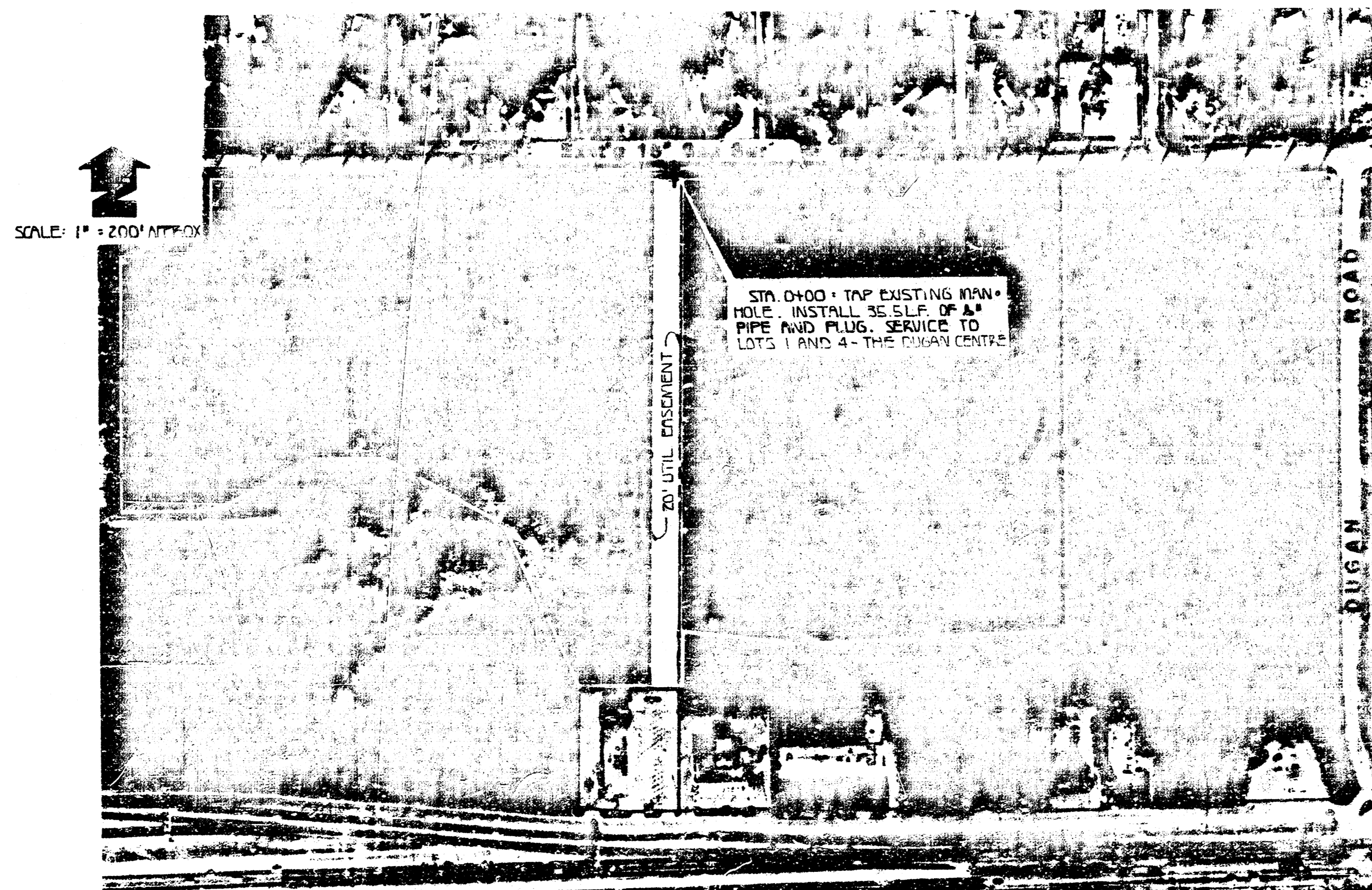
468-76-245-81593-000-000-001

GENERAL NOTES:

1. It is imperative that construction of this project be coordinated with the following projects:
Taft Street Improvements - proj. #472-76-245-81577-000-000-001
Storm Water Sewer 315 - proj. #468-76-245-81589-000-000-001
2. The Contractor shall be responsible for preserving property irons. The Contractor will be required to re-establish any property irons which are damaged or destroyed by his construction operations. Such irons shall be re-established by a licensed land survey or a licensed professional engineer in accordance with state laws.

INDEX

1. TITLE SHEET
2. PLAN / PROFILE



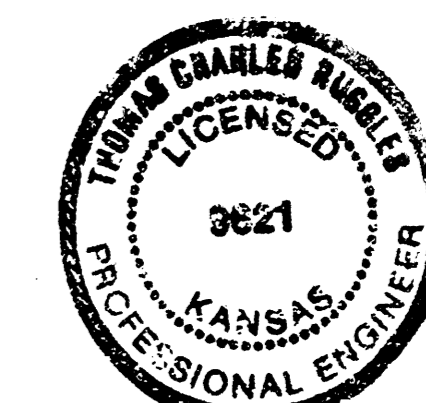
BENCHMARK:
NORTHEAST CORNER OF FRONT PORCH STEP,
HOUSE AT 453 S. PALSTIN. ELEV. 182.73

CITY OF WICHITA, KANSAS

MICHAEL E. LINDEBAK

CITY ENGINEER

*AS BUILT
RDL
1-87*



OCTOBER 26, 1987

BAUGHMAN COMPANY, P.A.
SURVEYING & ENGINEERING
2107/2002-7271 • 510 ELLIS • WICHITA, KANSAS 67211

Sheet
1
of
2

