

# LATERAL 42 MAIN 4 S.W. INTERCEPTOR

## PROJECT NO. 468-76-245-81722000-000-001

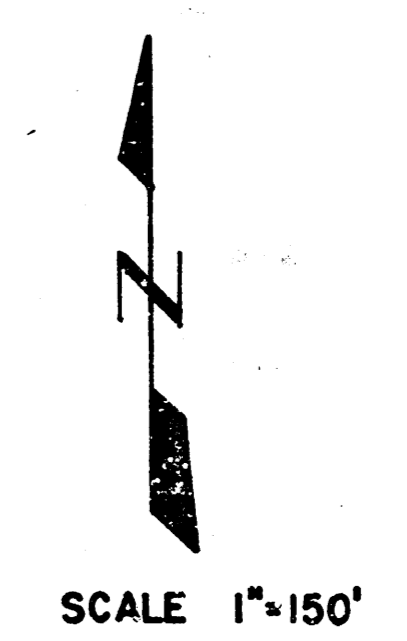
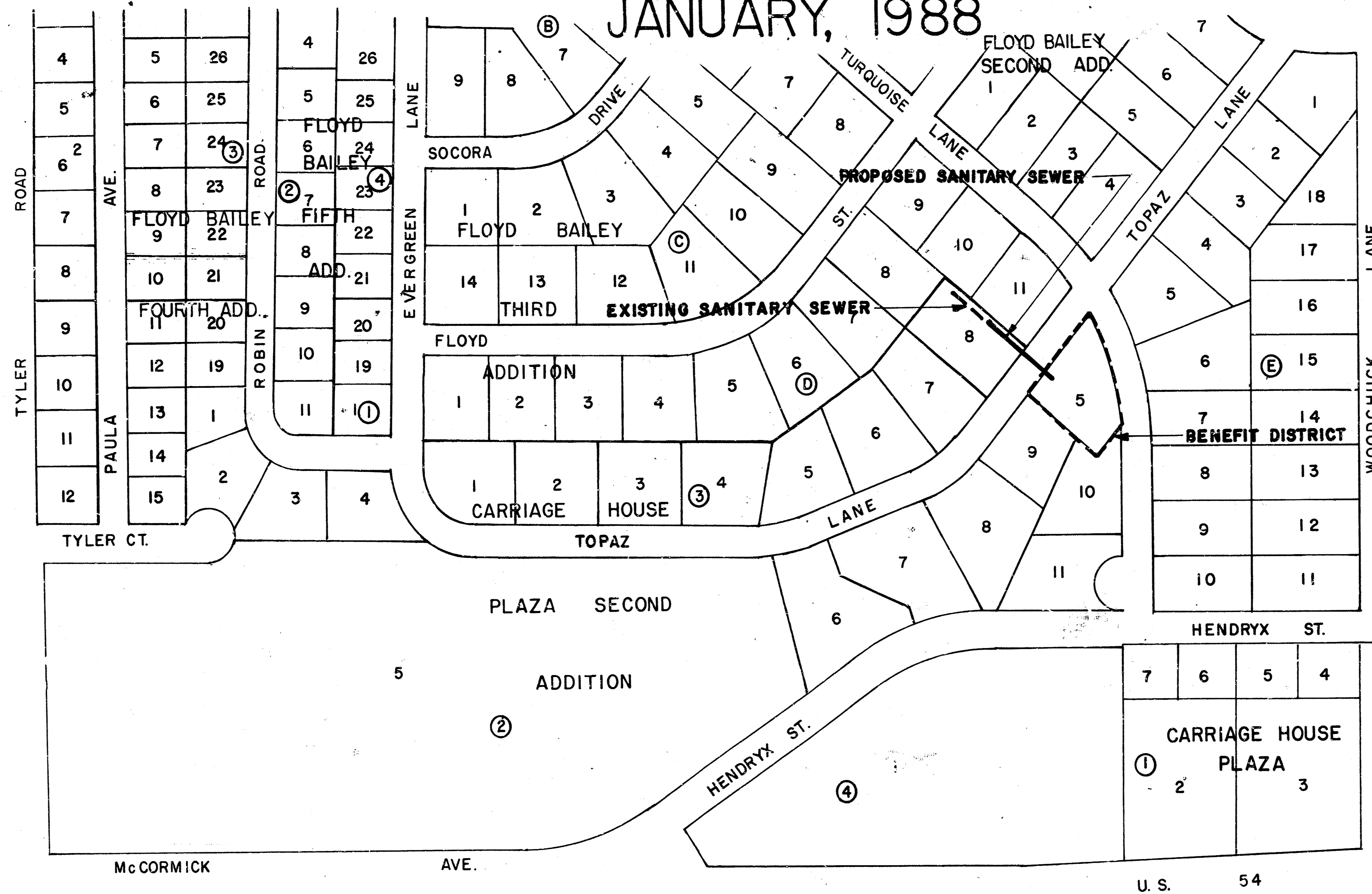
### CITY OF WICHITA, KANSAS

### MICHAEL E. LINDEBAK, CITY ENGINEER

#### GENERAL NOTES

1. ALL BLOCK CORNERS AND CONTROL POINTS WILL BE PROTECTED. IF REMOVED DURING CONSTRUCTION, CONTRACTOR WILL HAVE THEM REPLACED BY A LICENSED ENGINEER OR LAND SURVEYOR AT HIS EXPENSE.
2. WHEN THE EXISTING FENCING THAT IS KEEPING IN HOUSEHOLD PETS IS REMOVED TO FACILITATE SEWER CONSTRUCTION, THE CONTRACTOR SHALL PROVIDE ALL NECESSARY MATERIALS AND LABOR TO INSTALL TEMPORARY 4 FT. HIGH FENCING.
3. IF THE CONSTRUCTION IS FINISHED DURING THE APPROPRIATE TIME OF YEAR TO PLANT GRASS SEED, THE CONTRACTOR SHALL PROVIDE AND PLANT GRASS SEED ACCORDING TO THE CITY OF WICHITA SPECIFICATIONS.
4. WHEN POSSIBLE CONTRACTOR SHALL PRESERVE TREES.

JANUARY, 1988



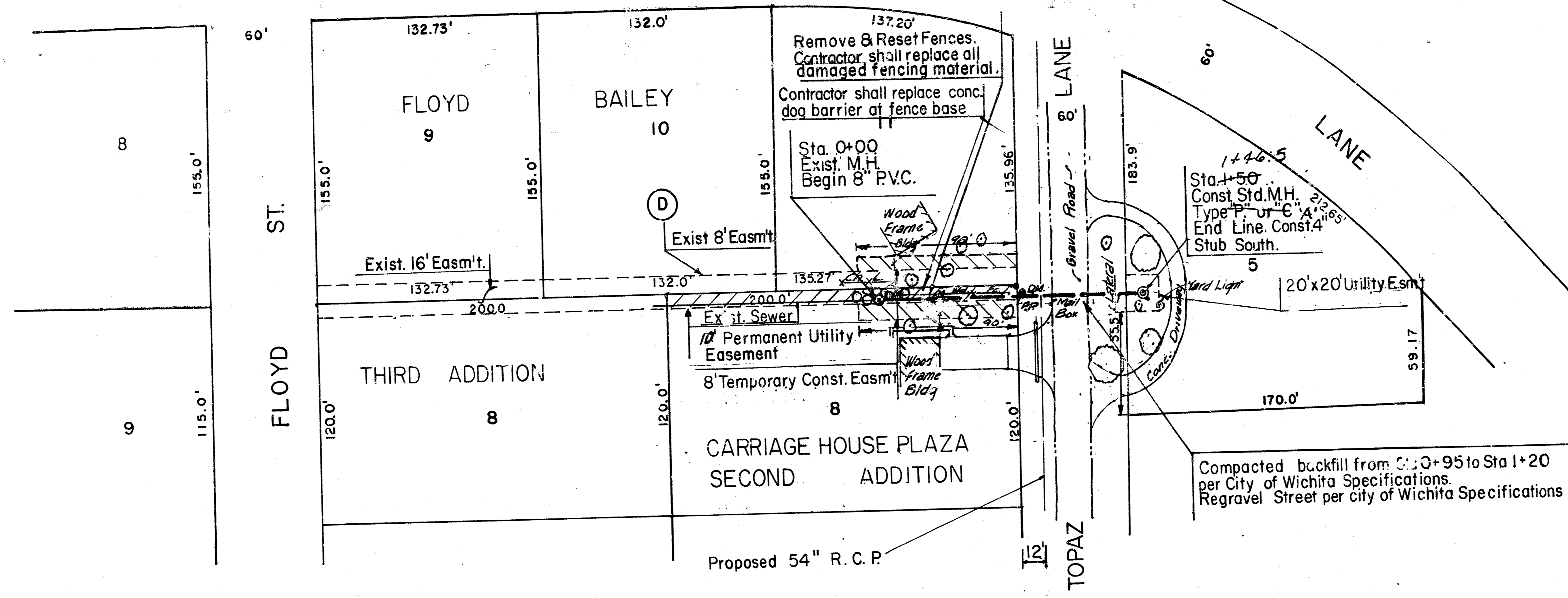
*AS BUILT  
from Insp. Cards  
10-26-88  
RCL*

**NOTE:**  
THE CITY OF WICHITA WILL AIR TEST  
AND TELEVISION THE NEW LINE PRIOR TO  
ACCEPTANCE.

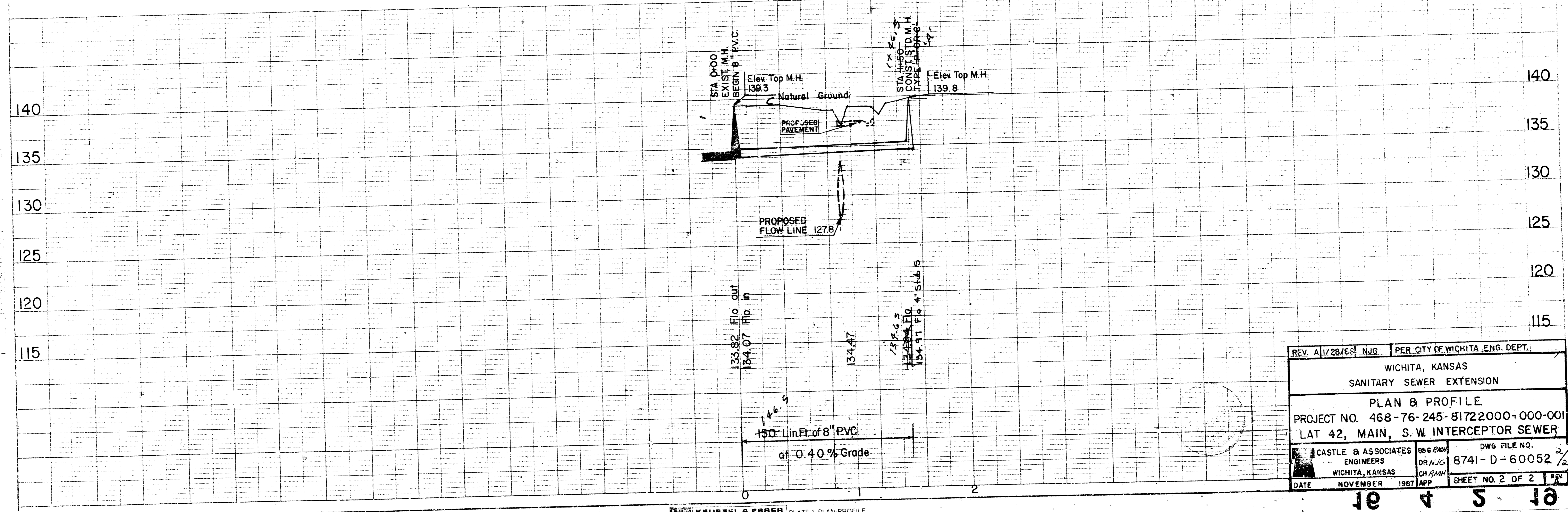
REV. A	11/28/88	RMH	PER CITY OF WICHITA ENG. DEPT.
WICHITA, KANSAS SANITARY SEWER EXTENSION			
LOCATION MAP			
PROJECT NO. 468-76-245-81722000-000-001			
LAT 42, MAIN, S. W. INTERCEPTOR SEWER			
	DSG RMH DRN/IG CH/AMM	DWG FILE NO. 8741-D-60052	SHEET NO. 1 OF 2
	DATE NOVEMBER 1987	APP	REV. A

BM143.45 Chiseled "a" in light pole base at South R/W line of Maple St. & 68 Ft. East of East R/W line of Woodchuck.  
 BM138.73 Chiseled "a" on 2'x6" Concrete Headwall at north side of drive at 517 Topaz

TURQUOISE



Plan Scale 1" = 40'  
 Profile Scale 1" = 40' Horz.  
 1" = 5' Vert.



REV. A/11/28/85	NJG	PER CITY OF WICHITA ENG. DEPT.
WICHITA, KANSAS		
SANITARY SEWER EXTENSION		
PLAN & PROFILE		
PROJECT NO. 468-76-245-81722000-000-001		
LAT 42, MAIN, S. W. INTERCEPTOR SEWER		
CASTLE & ASSOCIATES	DR. N.J.G.	DWG FILE NO. 8741-D-60052
ENGINEERS	CH. R.M.M.	
WICHITA, KANSAS	APP	SHEET NO. 2 OF 2
DATE	NOVEMBER 1987	