

# LATERAL 46, MAIN 4, S.W.I.

Sanitary Sewer Extensions to Serve

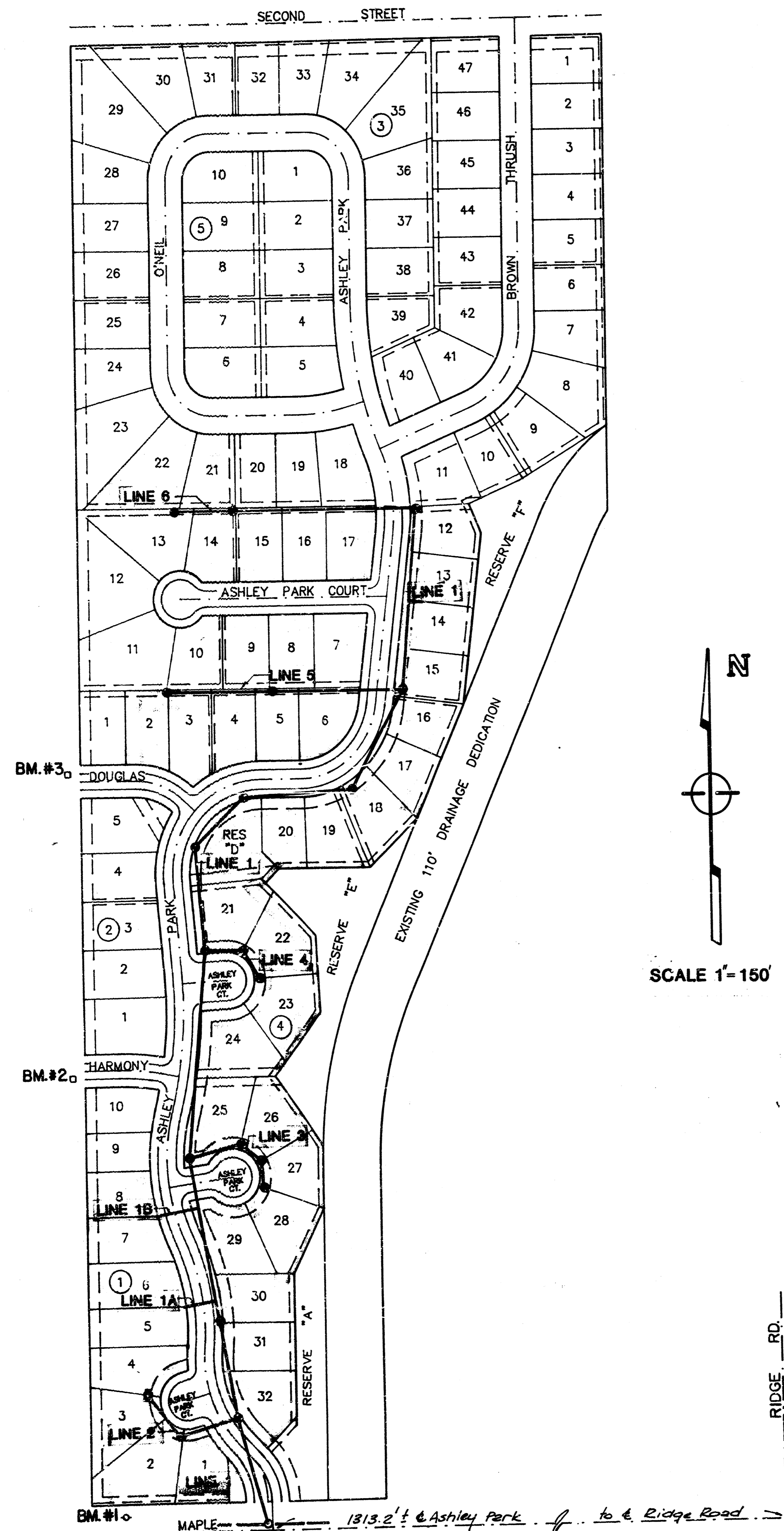
## ASHLEY PARK ADDITION

Project No.

**468-76-245-81894-000-000-001**

CITY OF WICHITA, KANSAS

Michael E. Lindebak City Engineer



SCALE 1"=150'

### INDEX

- 1) TITLE SHEET
- 2) LINE 1 PLAN AND PROFILE
- 3) LINE 1 PLAN AND PROFILE
- 4) LINE 2, LINE 3, AND LINE 4 PLANS AND PROFILES
- 5) LINE 5 PLAN AND PROFILE
- 6) LINE 6 PLAN AND PROFILE
- 7) LINE 1A AND 1B PLANS AND PROFILES
- 8) PLAT OF ASHLEY PARK ADDITION

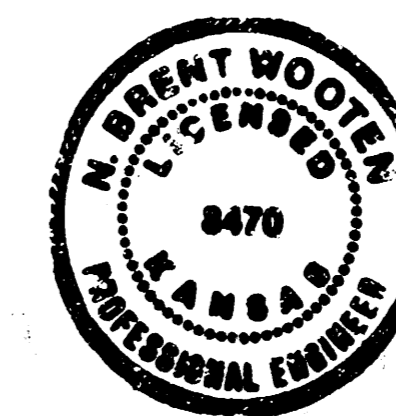
### BENCH MARKS

- Bench Mark 1 R.R. Spike in Power Pole North Side of Maple, 21' S. & 6.5' E. of SW Corner of Ashley Park Addition. Elev. 141.46 City Datum
- Bench Mark 2 0" Cut in Top of Curb, South Side of Harmony St., 20' W. of NW Corner of Lot 10, Blk. 1, Ashley Park Addition. Elev. 141.46 City Datum
- Bench Mark 3 0" Cut in Top of Curb, North Side of Douglas St., 20' W. of SW Corner of Lot 1, Blk. 3, Ashley Park Addition. Elev. 144.33 City Datum

### GENERAL NOTES

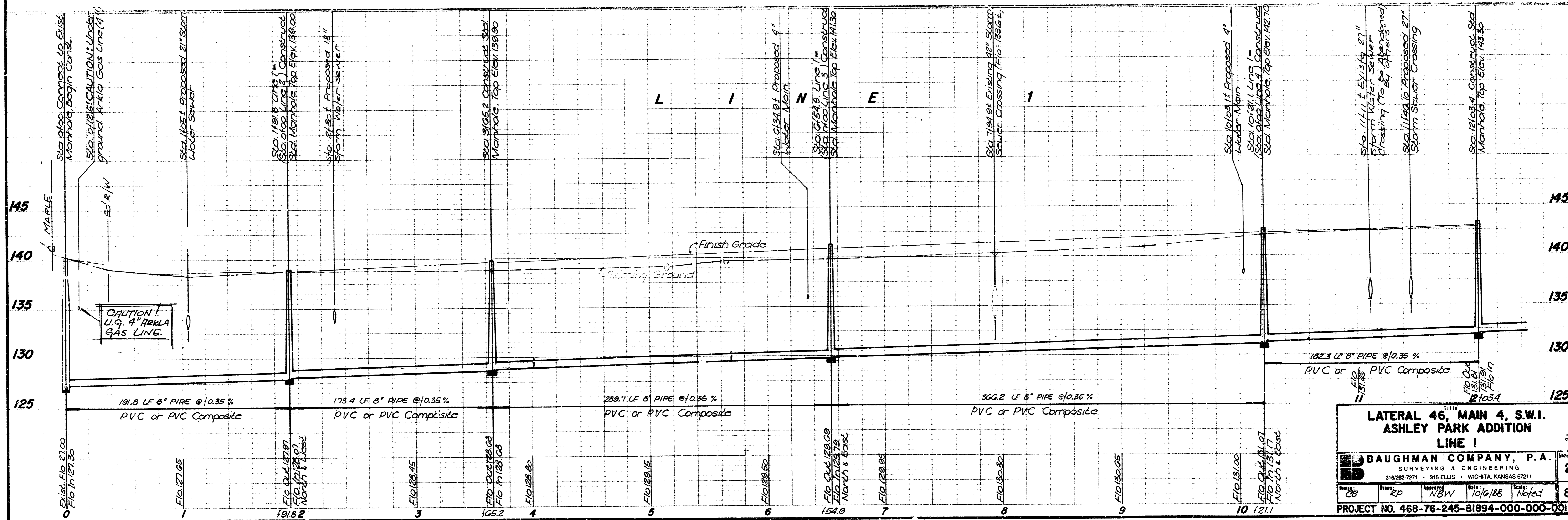
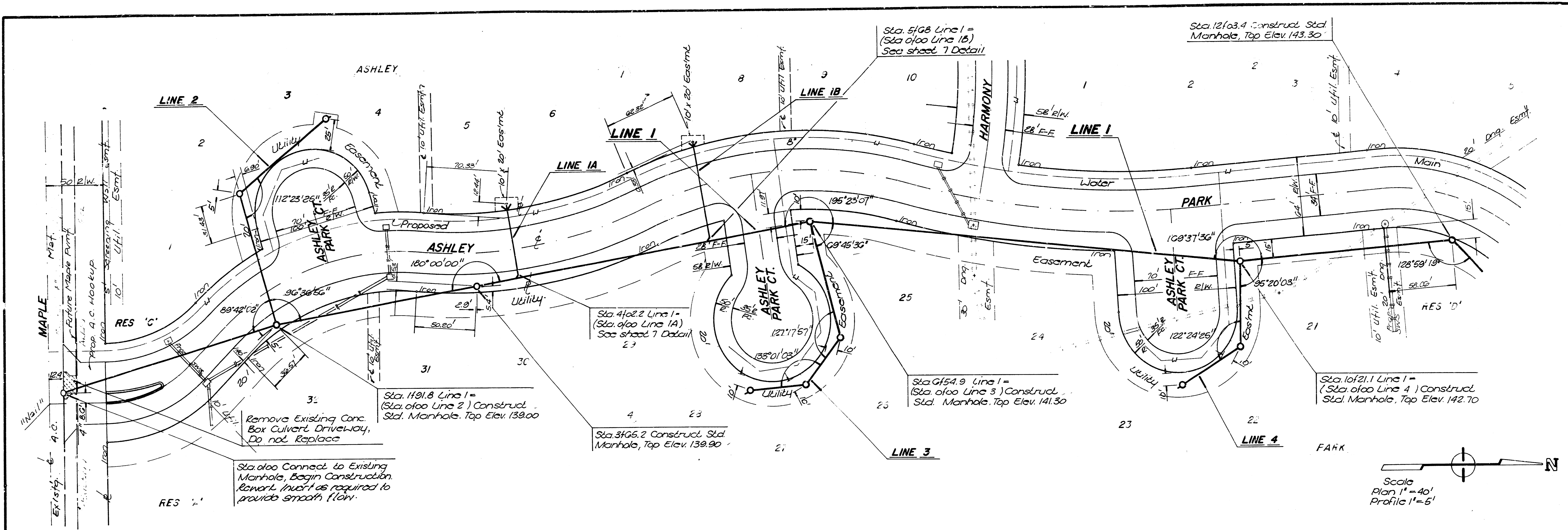
1. Underground utility service lines and overhead utility pole lines are to be adjusted as necessary by others prior to construction unless the plans specifically call for their adjustment by the Contractor or unless the plans specifically identify a utility to be adjusted by its owner during construction. Existing utilities and their location, as shown on the plans, represent the best information obtainable for design. The Contractor will be required to work around existing utilities within the right-of-way which do not conflict with proposed construction.
2. Trees and shrubs in public right-of-way which are in direct conflict with proposed new construction shall be removed by the Contractor with the Engineer's approval. Trees and shrubs which are not in direct conflict with proposed new construction shall be saved and protected from damage.
3. The Contractor shall give all property owners and/or tenants of developed property abutting the construction of this project a minimum of ten (10) days advance notice prior to start of construction.
4. The Contractor shall be responsible for maintaining continuous flow of sewage through construction. Contractor's proposed method for maintaining sewage flow shall be approved by the Engineer. Cost of maintaining flow of sewage through construction will not be paid for directly and this cost shall be considered as subsidiary to the other pay items of work.
5. The Contractor shall be responsible for preserving property irons. The Contractor will be required to re-establish any property irons which are damaged or destroyed by his construction operations. Such irons shall be re-established by a licensed land surveyor in accordance with state laws.
6. At least one lane of through traffic shall be maintained on Maple throughout construction of this project.

BUILT AS PER PLAN  
3-89  
RDL



BENEFIT DISTRICT

BAUGHMAN COMPANY P. A.  
SURVEYING & ENGINEERING  
316/282-7271 • 315 ELLIS • WICHITA, KANSAS 67211



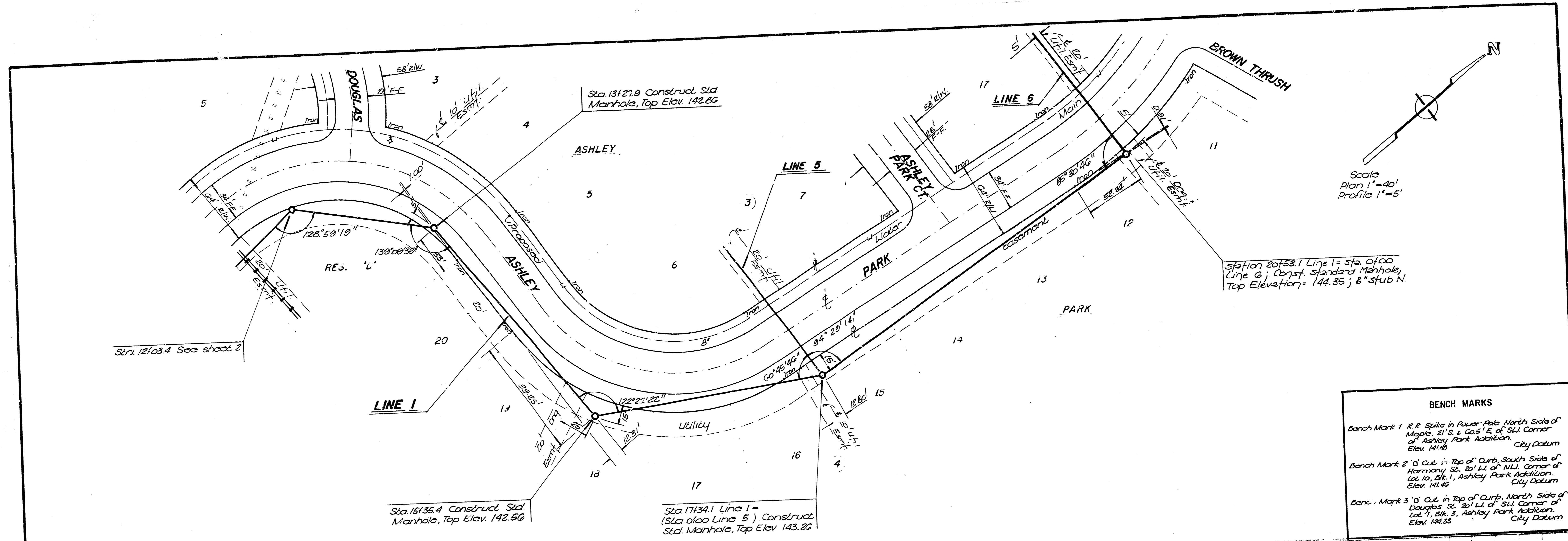
**LATERAL 46, MAIN 4, S.W.I. ASHLEY PARK ADDITION LINE 1**

**BAUGHMAN COMPANY, P.A.**  
 SURVEYING & ENGINEERING  
 316/282-7271 • 315 ELLIS • WICHITA, KANSAS 67211

Drawn: CB, Checked: EP, Approved: N&W, Date: 10/6/88, Scale: Noted

PROJECT NO. 468-76-245-81894-000-000-001

Sheet 2 of 8

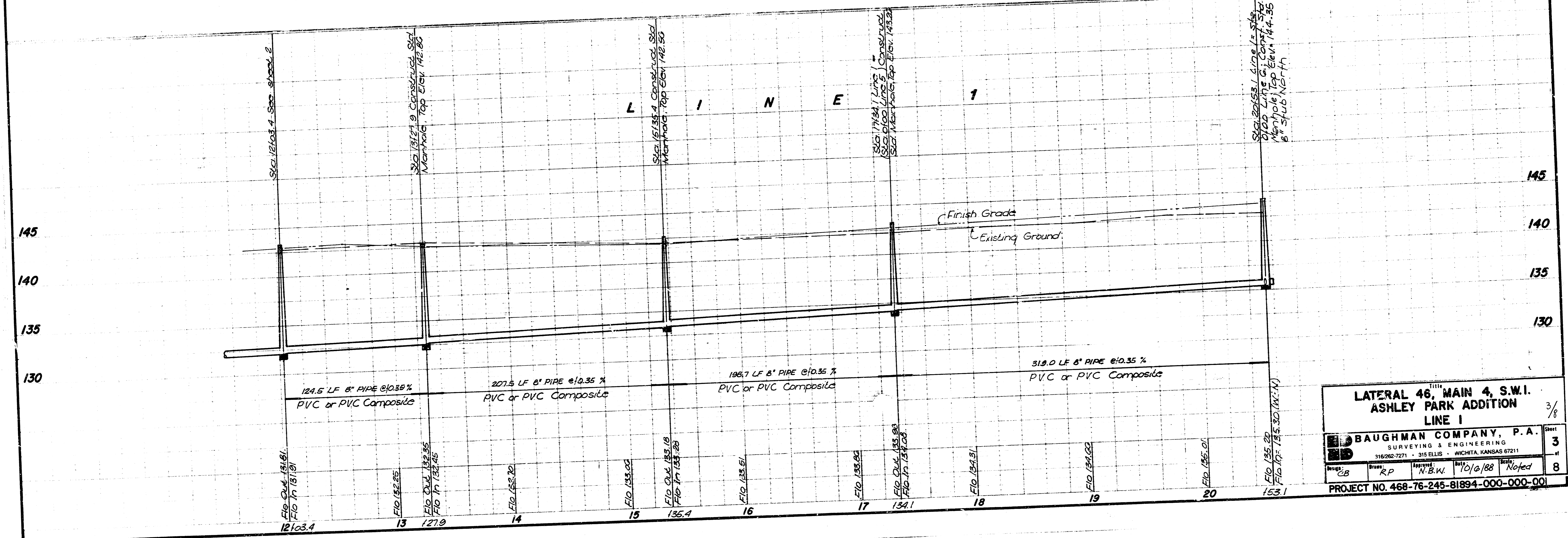


**BENCH MARKS**

Bench Mark 1 R.R. Spike in Power Pole North Side of Maple, 21' S. & 65' E. of SW Corner of Ashley Park Addition. City Datum Elev. 141.48

Bench Mark 2 10" Cur. in Top of Curb, South Side of Harmony St. 20' E. of N.W. Corner of Lot 10, Blk. 1, Ashley Park Addition. City Datum Elev. 141.46

Bench Mark 3 10" Cur. in Top of Curb, North Side of Douglas St. 20' E. of SW Corner of Lot 1, Blk. 3, Ashley Park Addition. City Datum Elev. 144.33



**LATERAL 46, MAIN 4, S.W.I. ASHLEY PARK ADDITION LINE 1**

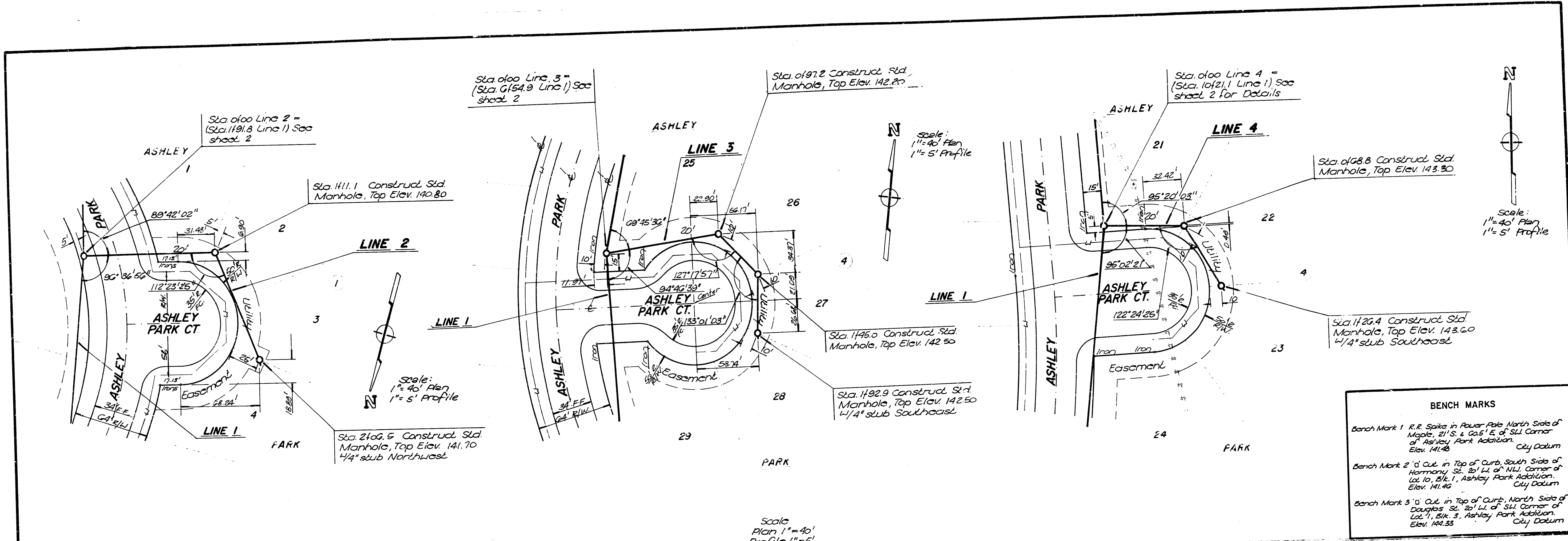
3/8

**BAUGHMAN COMPANY, P.A.**  
SURVEYING & ENGINEERING  
315262-7271 • 315 ELLIS • WICHITA, KANSAS 67211

Drawn: EB  
Checked: RP  
Designed: N.B.W.  
Date: 10/8/88  
Scale: Noted

Sheet: 3  
of: 8

PROJECT NO. 468-76-245-81894-000-000-00

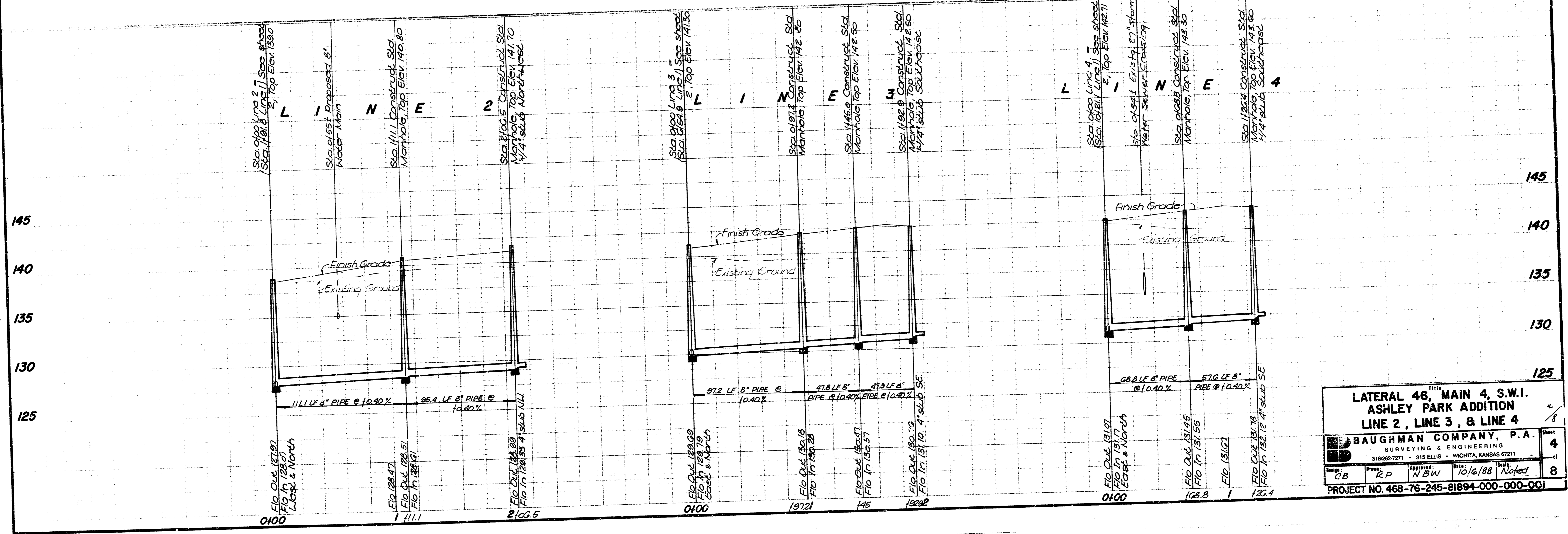


**BENCH MARKS**

Bench Mark 1 R.R. Spike in Power Pole North Side of Maple, 21' S. & 0.25' E. of SW Corner of Ashley Park Addition. Elev. 141.46 City Datum

Bench Mark 2 0' Curb in Top of Curb, South Side of Harmony St. 20' W. of N.W. Corner of Lot 10, Blk. 1, Ashley Park Addition. Elev. 141.42 City Datum

Bench Mark 3 0' Curb in Top of Curb, North Side of Douglas St. 20' W. of SW Corner of Lot 1, Blk. 3, Ashley Park Addition. Elev. 141.33 City Datum



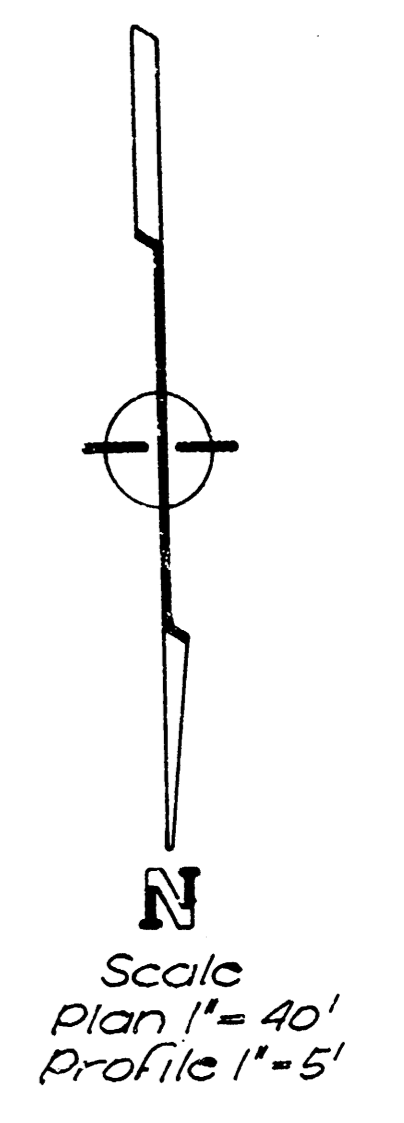
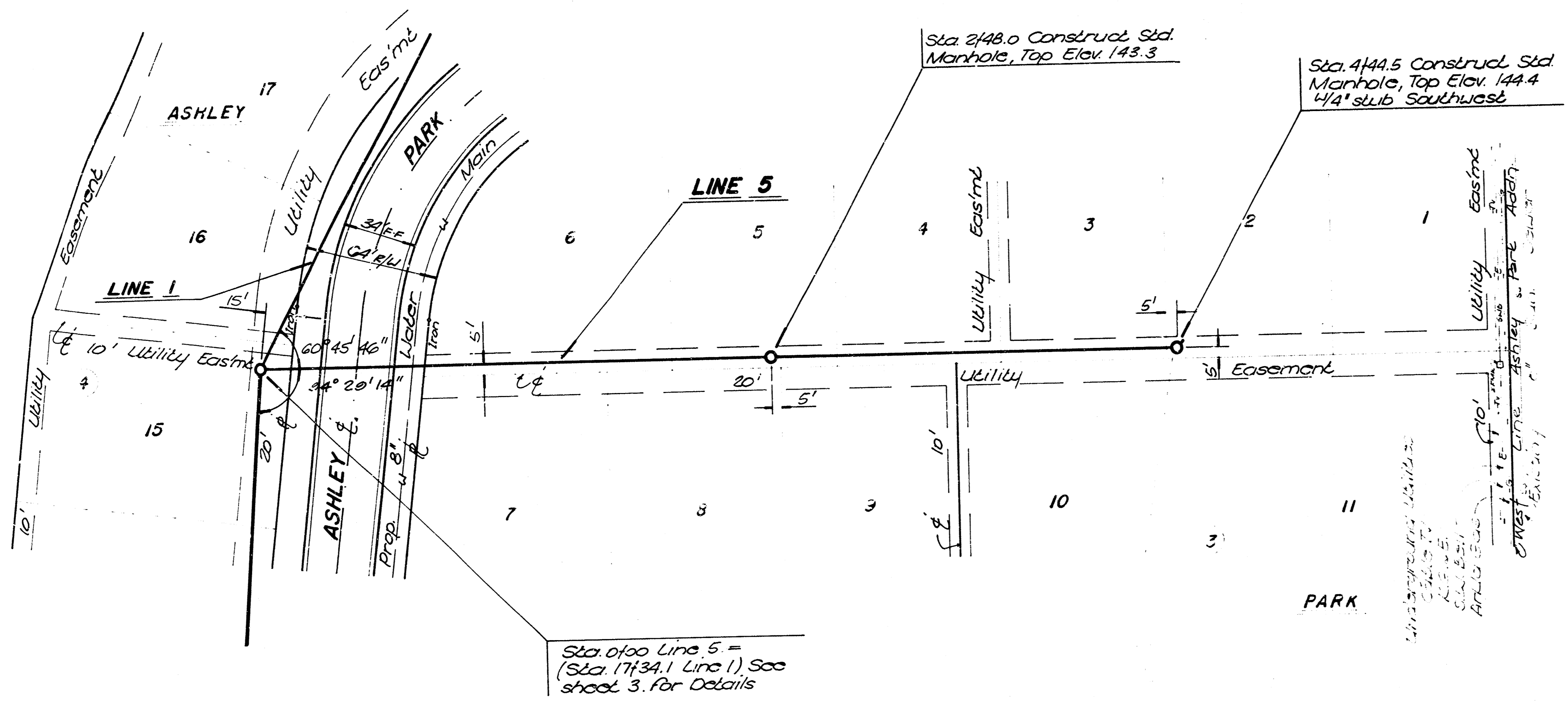
**LATERAL 46, MAIN 4, S.W.1. ASHLEY PARK ADDITION LINE 2, LINE 3, & LINE 4**

**BAUGHMAN COMPANY, P.A.**  
SURVEYING & ENGINEERING  
315 ELLIS • WICHITA, KANSAS 67211

Drawn: CB    Project: RP    Checked: NBW    Date: 10/6/88    Scale: Noted

PROJECT NO. 468-76-245-81894-000-001

Sheet 4 of 4

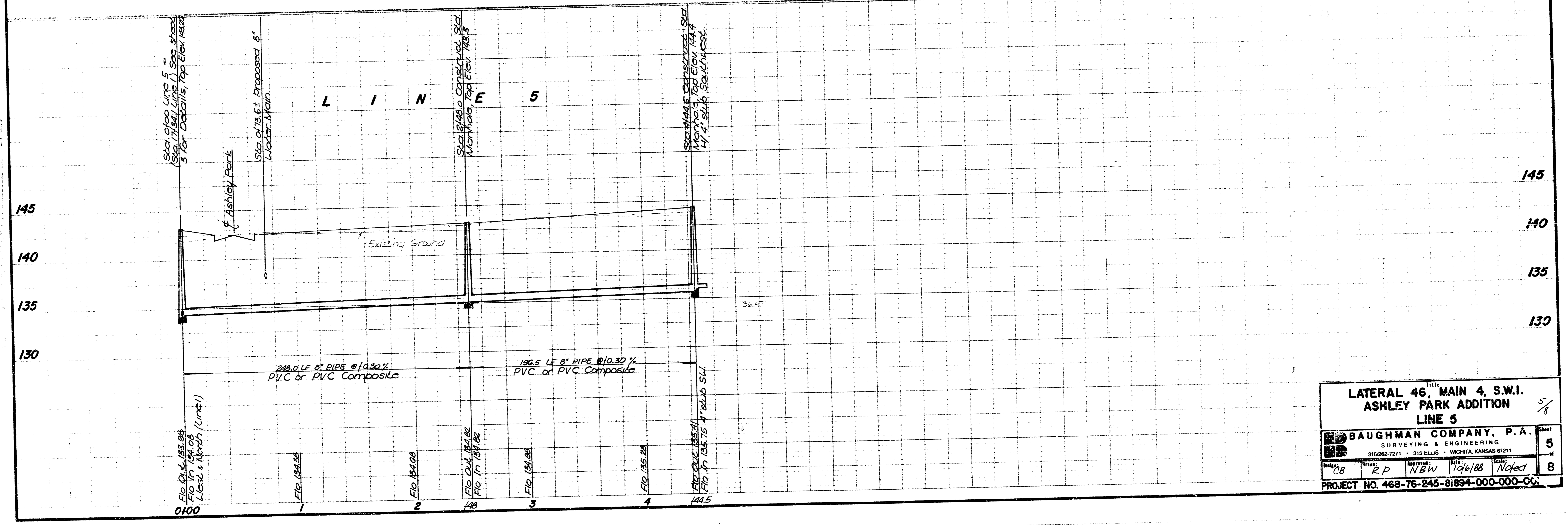


**BENCH MARKS**

Bench Mark 1 R.R. Spike in Power Pole North Side of Maple, 21' S. & 65' E. of SW Corner of Ashley Park Addition. Elev. 141.46 City Datum

Bench Mark 2 0' Cut in Top of Curb, South Side of Harmony St. 20' W. of NW Corner of Lot 10, Blk. 1, Ashley Park Addition. Elev. 141.46 City Datum

Bench Mark 3 0' Cut in Top of Curb, North Side of Douglas St. 20' W. of SW Corner of Lot 1, Blk. 3, Ashley Park Addition. Elev. 141.33 City Datum



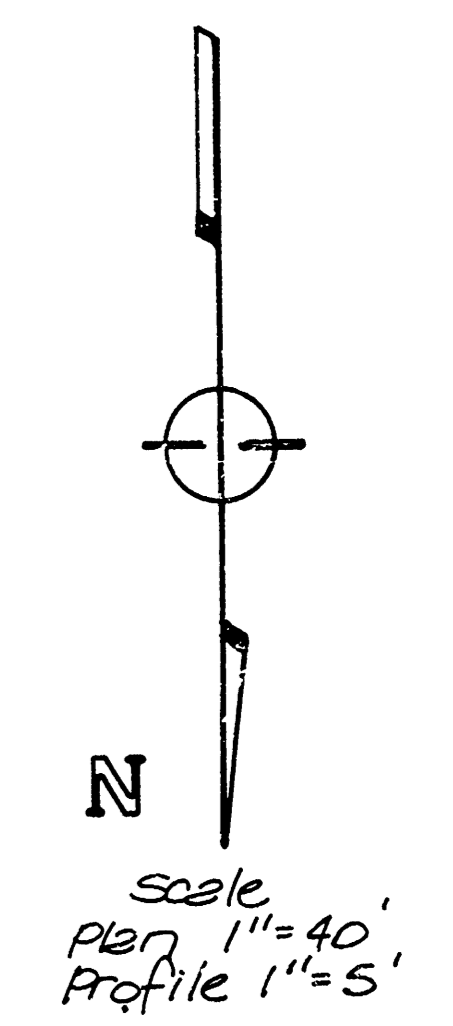
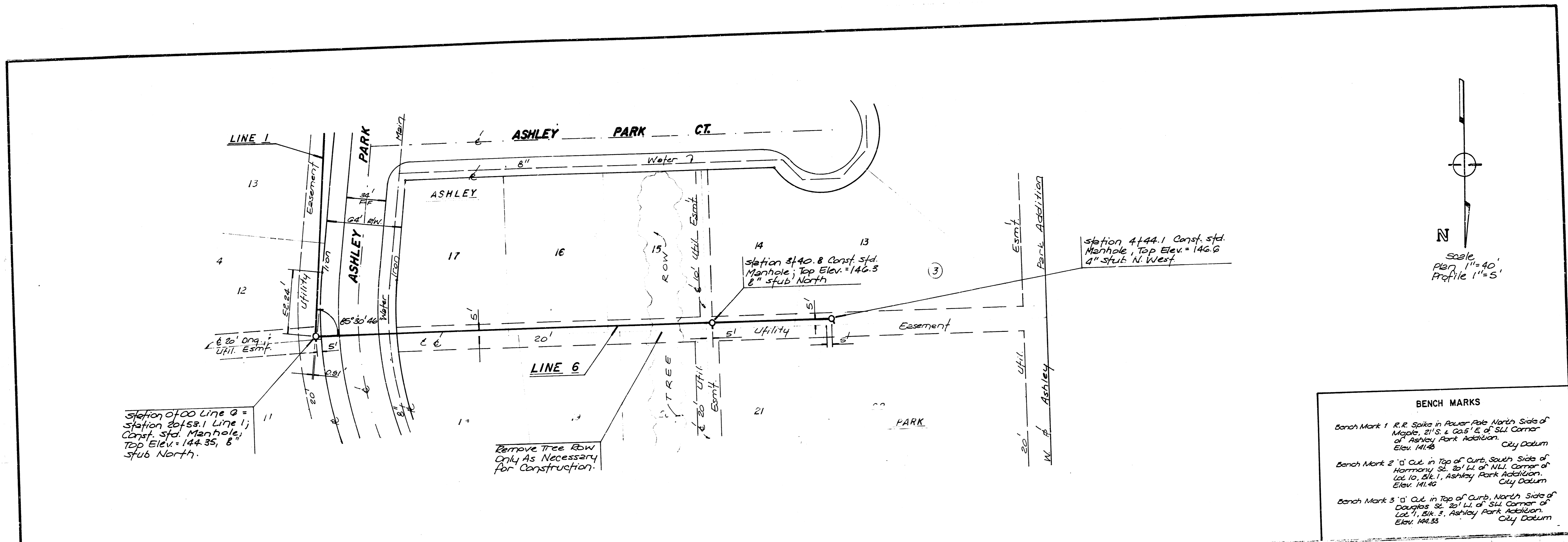
**LATERAL 46, MAIN 4, S.W.I. ASHLEY PARK ADDITION LINE 5**

**BAUGHMAN COMPANY, P.A.**  
 SURVEYING & ENGINEERING  
 316-262-7271 • 315 ELLIS • WICHITA, KANSAS 67211

PROJECT NO. 468-76-245-81894-000-000-00

DATE: 12/16/08 BY: NBN CHECKED: NBN

Sheet 5 of 8

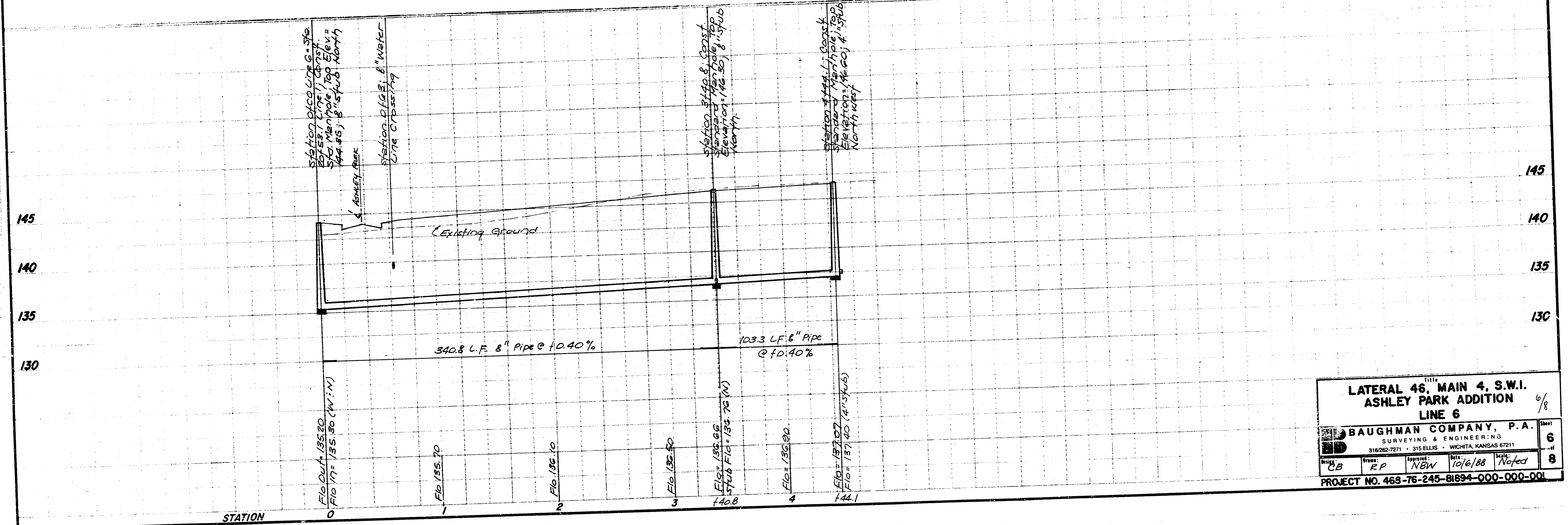


**BENCH MARKS**

Bench Mark 1 R.R. Spike in Power Pole North Side of Maple, 21' S. & 005' E. of SW Corner of Ashley Park Addition. City Datum Elev. 141.46

Bench Mark 2 '0' Cut in Top of Curb, South Side of Harmony St., 20' W. of N.W. Corner of Lot 10, Blk. 1, Ashley Park Addition. City Datum Elev. 141.46

Bench Mark 3 '0' Cut in Top of Curb, North Side of Douglas St., 20' W. of SW Corner of Lot 11, Blk. 1, Ashley Park Addition. City Datum Elev. 144.35



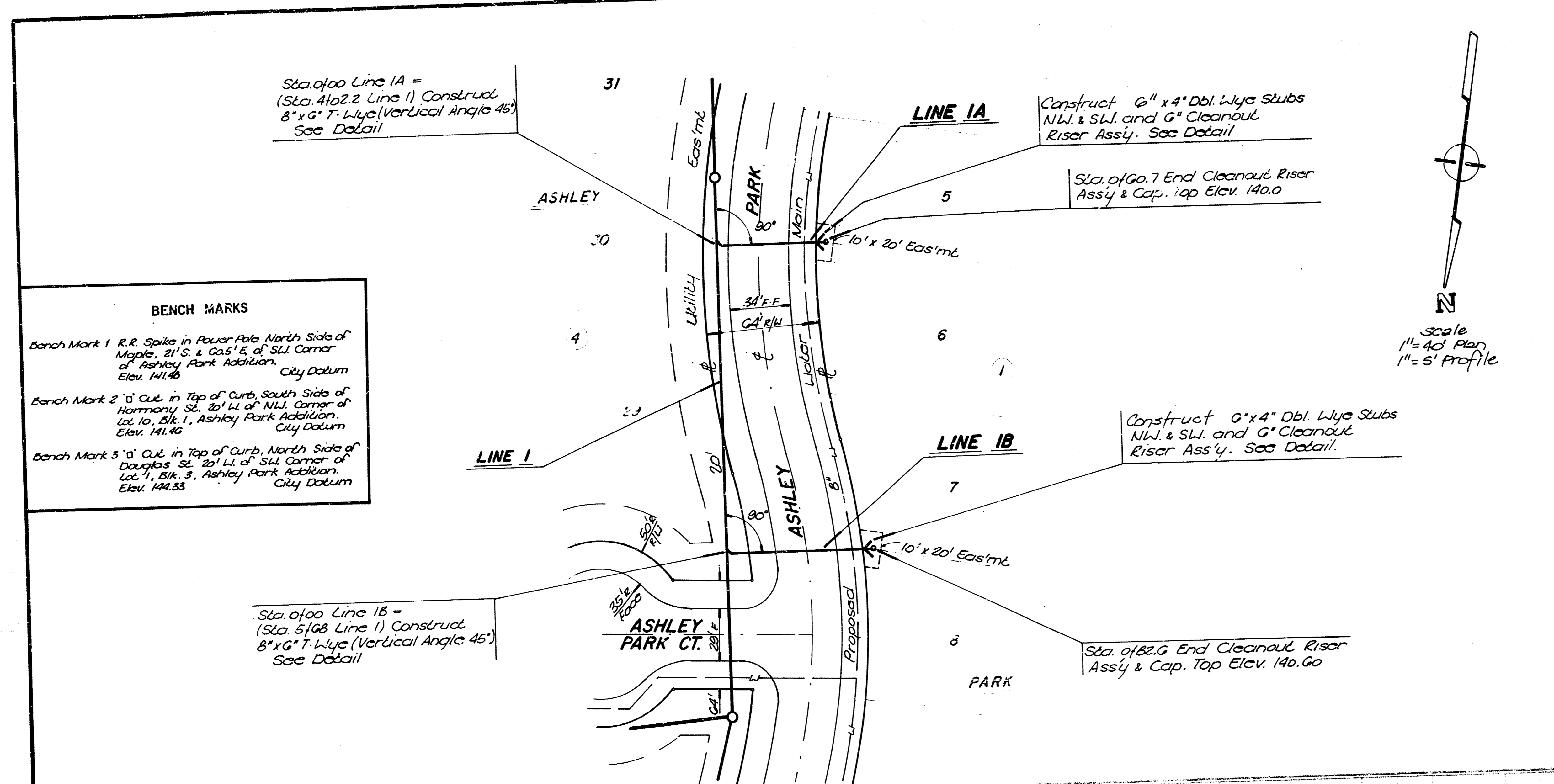
**LATERAL 46, MAIN 4, S.W.I. ASHLEY PARK ADDITION LINE 6**

6/8

**BAUGHMAN COMPANY, P.A.**  
SURVEYING & ENGINEERING  
316/262-7271 • 315 ELLIS • WICHITA, KANSAS 67211

|       |    |          |    |         |     |      |         |       |       |
|-------|----|----------|----|---------|-----|------|---------|-------|-------|
| Drawn | CB | Prepared | RP | Checked | NEW | Date | 10/6/88 | Scale | Noted |
| Sheet | 6  | of       | 11 |         |     |      |         |       |       |

PROJECT NO. 468-76-245-81894-000-001

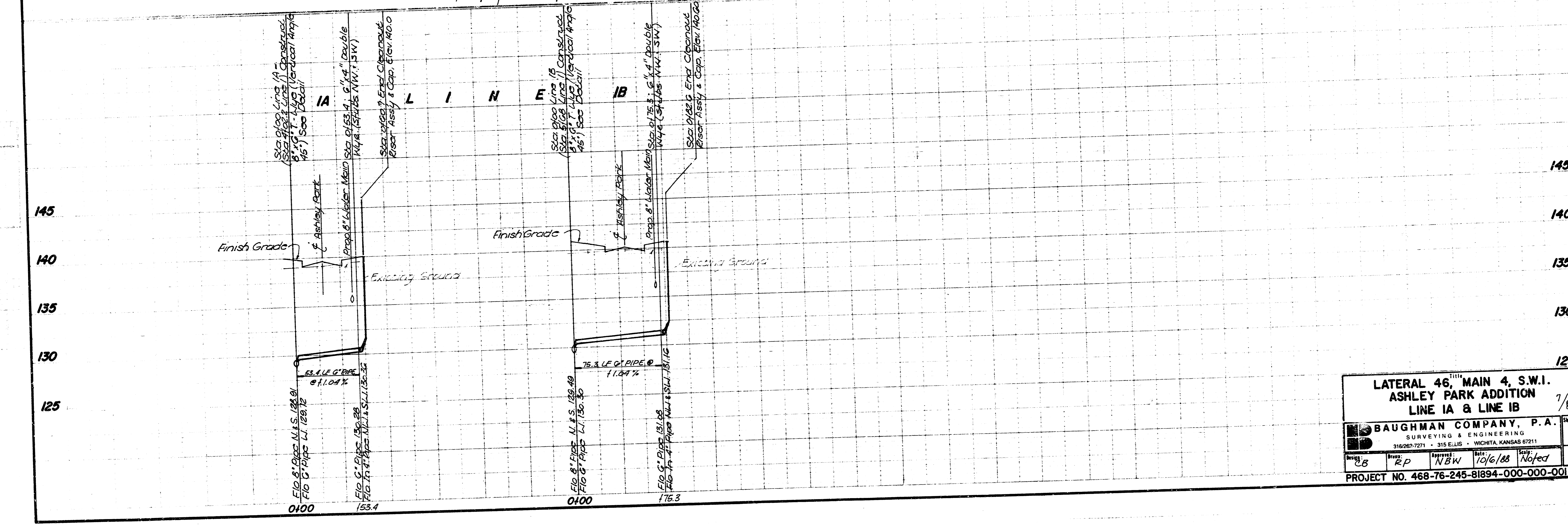
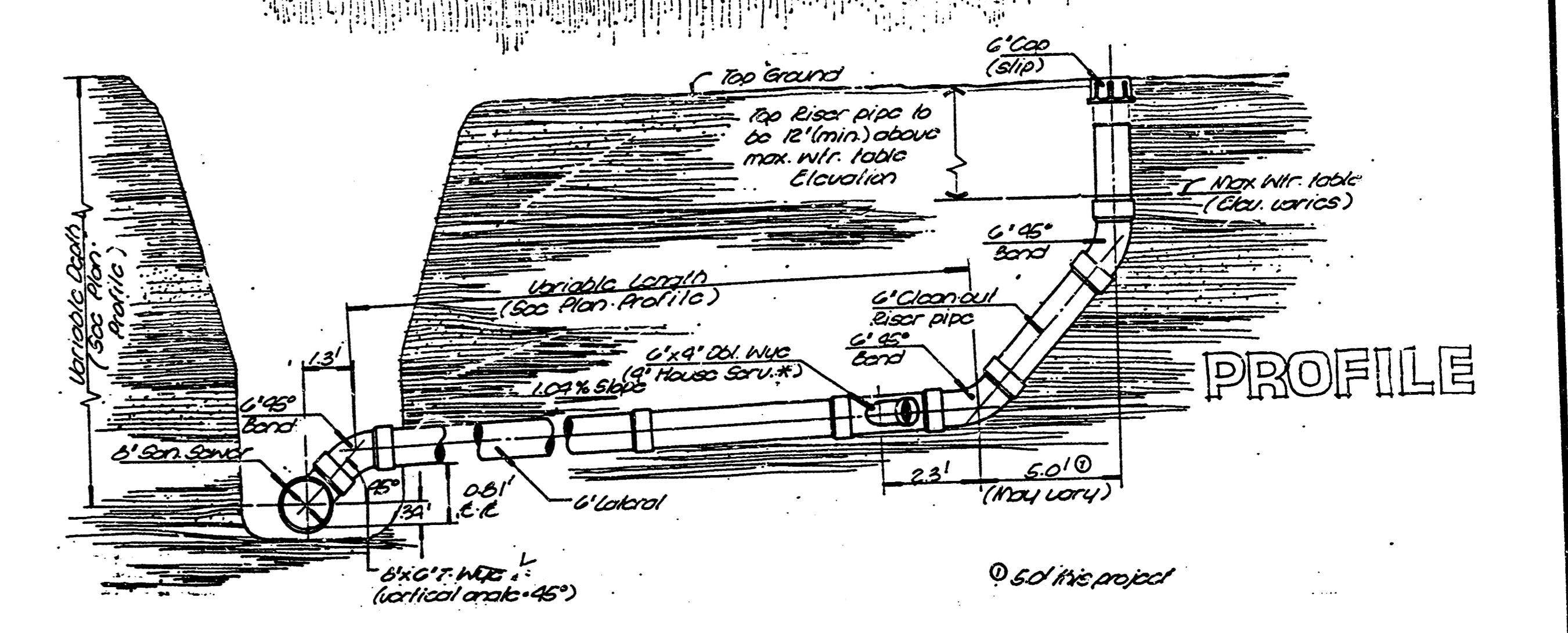
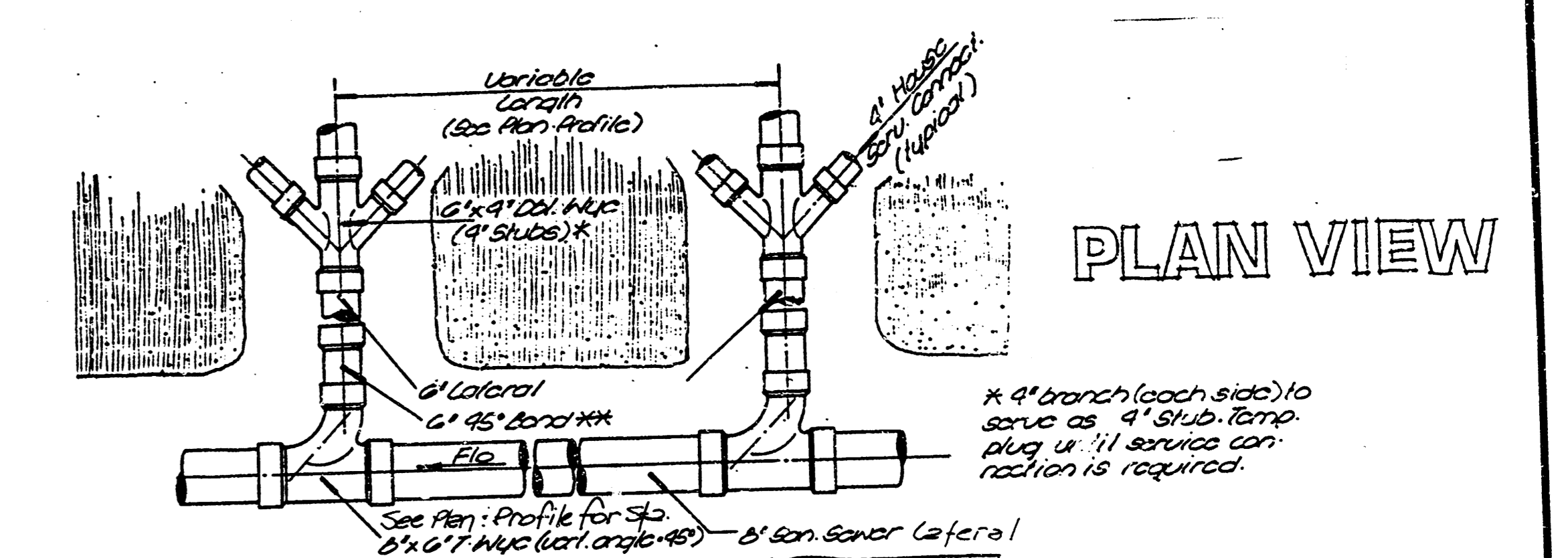


**BENCH MARKS**

Bench Mark 1 R.R. Spikes in Power Pole North Side of Maple, 21°S. & 02.5°E. of S.W. Corner of Ashley Park Addition. Elev. 141.40 City Datum

Bench Mark 2 1/2" Cut in Top of Curb, South Side of Harmony St. 20' W. of N.W. Corner of Lot 10, Blk. 1, Ashley Park Addition. Elev. 141.40 City Datum

Bench Mark 3 1/2" Cut in Top of Curb, North Side of Douglas St. 20' W. of S.W. Corner of Lot 7, Blk. 3, Ashley Park Addition. Elev. 141.33 City Datum



**LATERAL 46<sup>TH</sup> MAIN 4, S.W.I. ASHLEY PARK ADDITION LINE IA & LINE IB** 7/8

**BAUGHMAN COMPANY, P.A.**  
SURVEYING & ENGINEERING  
316 287-7271 • 315 ELLIS • WICHITA, KANSAS 67211

|       |    |         |    |       |     |      |         |       |       |
|-------|----|---------|----|-------|-----|------|---------|-------|-------|
| Drawn | CB | Checked | RP | Scale | NBW | Date | 10/6/88 | Notes | Noted |
| Sheet |    |         |    |       |     |      |         |       | 7     |
|       |    |         |    |       |     |      |         |       | 8     |

PROJECT NO. 468-76-245-81894-000-000-001

