

LATERAL 52, MAIN 4, SW. INTERCEPTOR SEWER

PROJ. NO. 468-82195

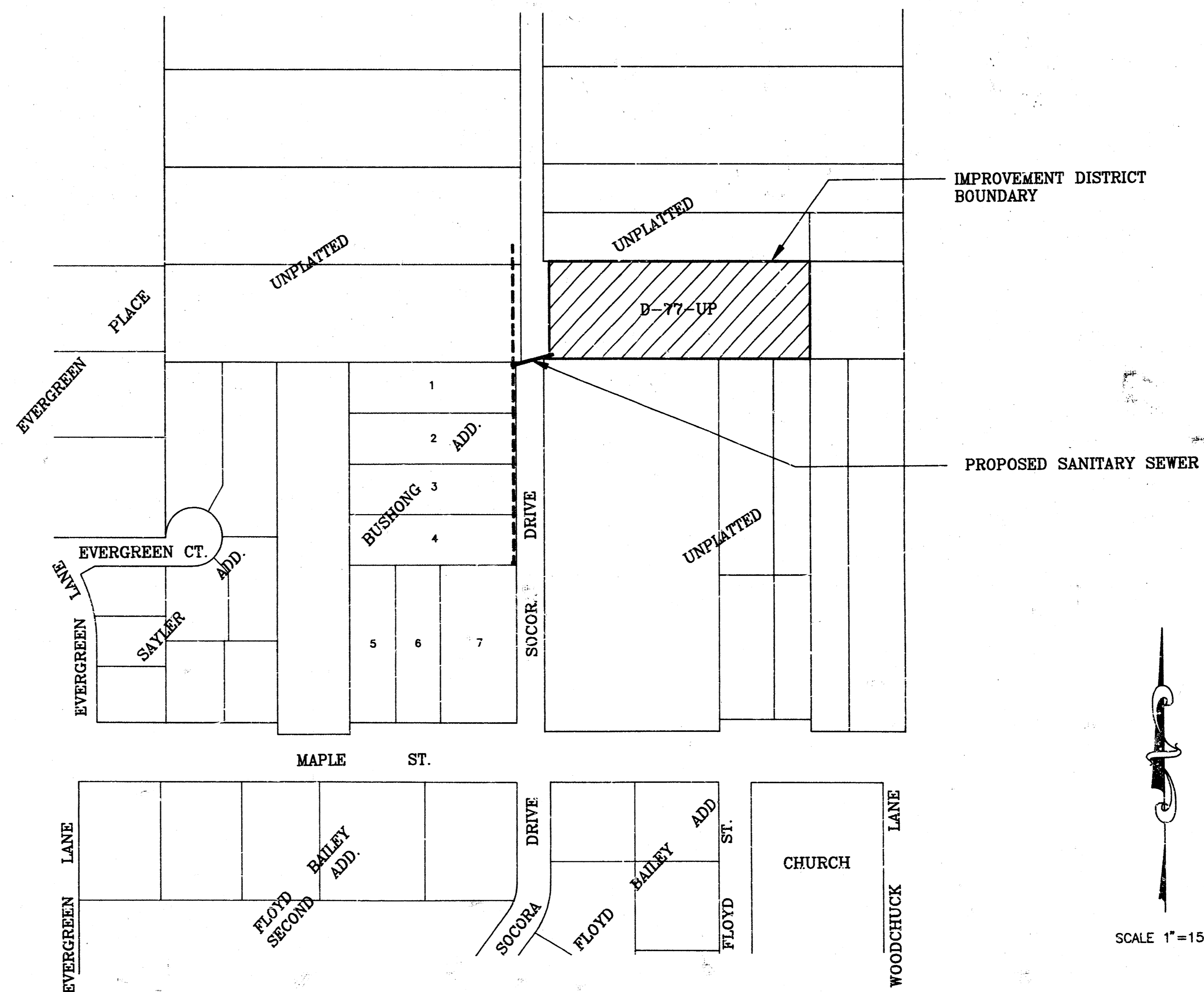
INDEX NO. 741108

CITY OF WICHITA, KANSAS

M. E. LINDEBAK - CITY ENGINEER

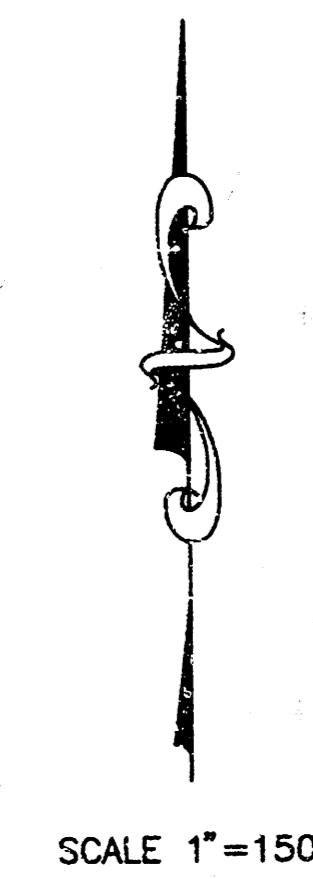
GENERAL NOTES:

1. ALL CONSTRUCTION AND MATERIAL TO COMPLY WITH CITY OF WICHITA SPECIFICATIONS AND STANDARDS.
2. THE CONTRACTOR SHALL NOTIFY THE UTILITY SERVICE COMPANIES TO FLAG THEIR UNDERGROUND LINES AND REQUEST ANY OVERHEAD POLE/LINE ADJUSTMENTS 48 HOURS PRIOR TO CONSTRUCTION.
KANSAS ONE-CALL 1-800-344-7233
3. THE UNDERGROUND UTILITY SERVICE LINES AND OVERHEAD UTILITY POLE LINES ARE TO BE ADJUSTED AS NECESSARY BY OTHERS PRIOR TO CONSTRUCTION UNLESS THE PLANS SPECIFICALLY CALL FOR THEIR ADJUSTMENT BY THE CONTRACTOR. EXISTING UTILITIES AND THEIR LOCATION, AS SHOWN ON THE PLANS, REPRESENT THE BEST INFORMATION OBTAINABLE FOR DESIGN. LOCATION INFORMATION HAS BEEN OBTAINED FROM THE VARIOUS UTILITY COMPANIES AND IS EITHER FROM COMPANY RECORD DRAWINGS OR COMPANY PROVIDED FIELD LOCATIONS. THE CONTRACTOR WILL BE REQUIRED TO WORK AROUND EXISTING UTILITIES WITHIN THE RIGHT-OF-WAY WHICH DO NOT CONFLICT WITH PROPOSED CONSTRUCTION.
4. THE CONTRACTOR SHALL GIVE ALL PROPERTY OWNERS AND/OR TENANTS DIRECTLY AFFECTED BY THE CONSTRUCTION OF THIS PROJECT A MINIMUM OF FIVE (5) DAYS ADVANCE WRITTEN NOTICE PRIOR TO START OF CONSTRUCTION.
5. THE CONTRACTOR SHALL NOTIFY THE RESIDENTS ON SOCCORA SOUTH OF THE PROJECT AND NORTH OF MAPLE AT LEAST TWO (2) DAYS PRIOR TO STREET CLOSURE APPROVED BY THE FIELD ENGINEER.
6. ANY TREE OR SHRUB REMOVAL MUST BE APPROVED BY THE FIELD ENGINEER.
7. THE CONTRACTOR MUST EXAMINE THE CONSTRUCTION SITE PRIOR TO BIDDING AND BE SATISFIED AS TO THE WORK SHOWN FOR COMPLETION.



INDEX OF SHEETS

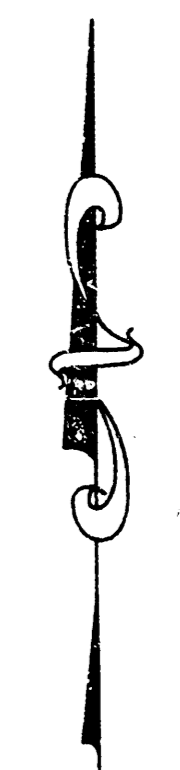
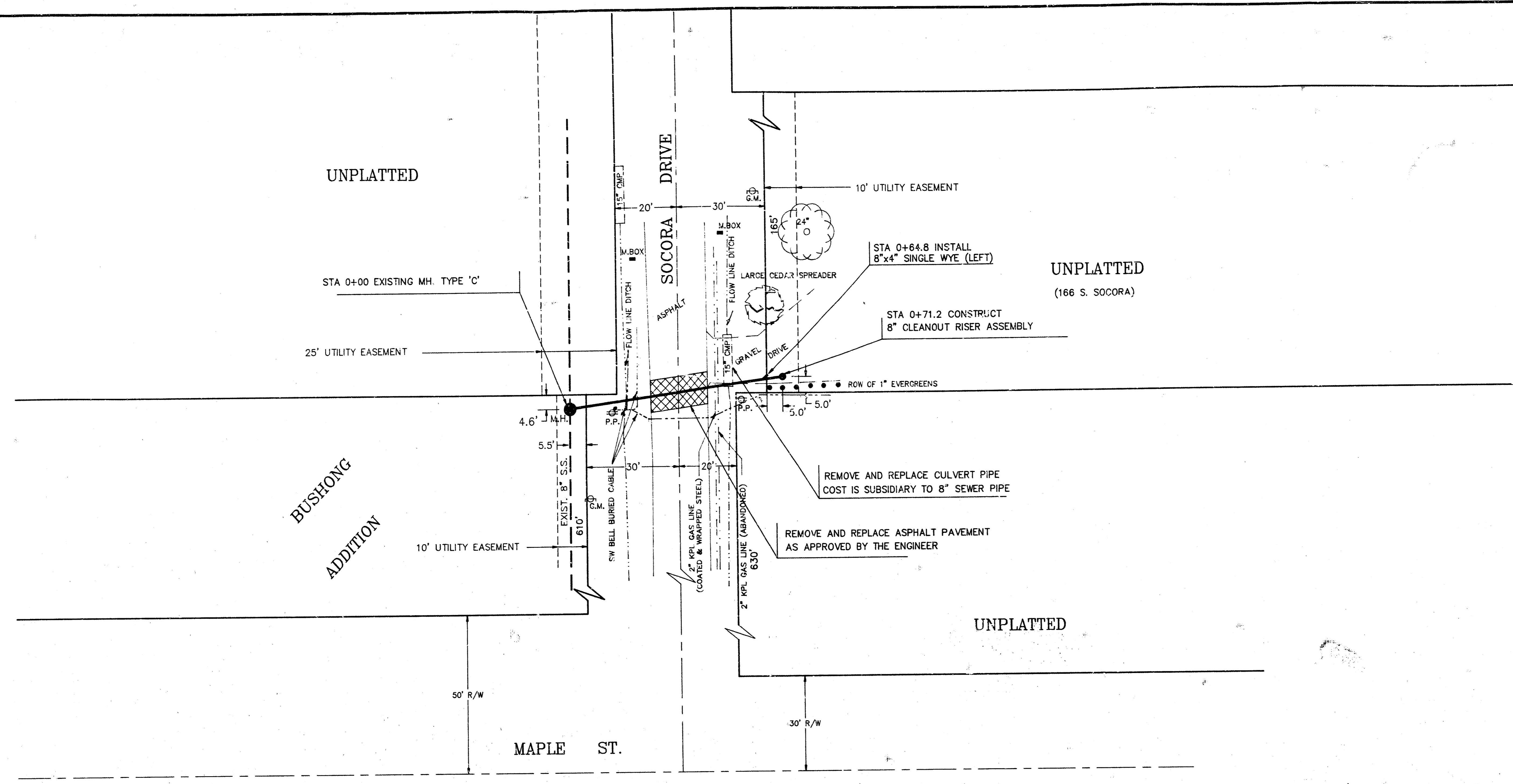
SHEET 1 - TITLE SHEET
SHEET 2 - PLAN/PROFILE



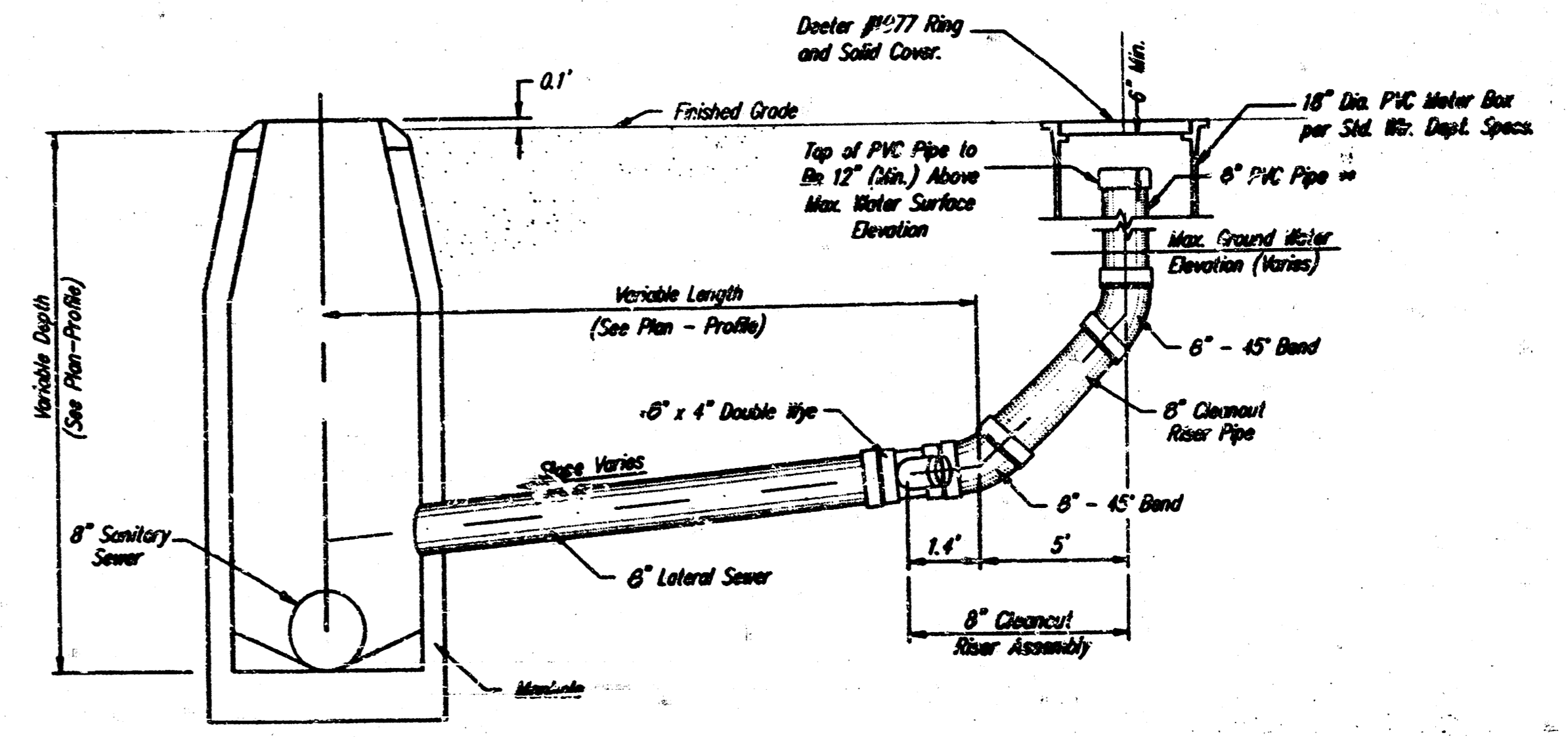
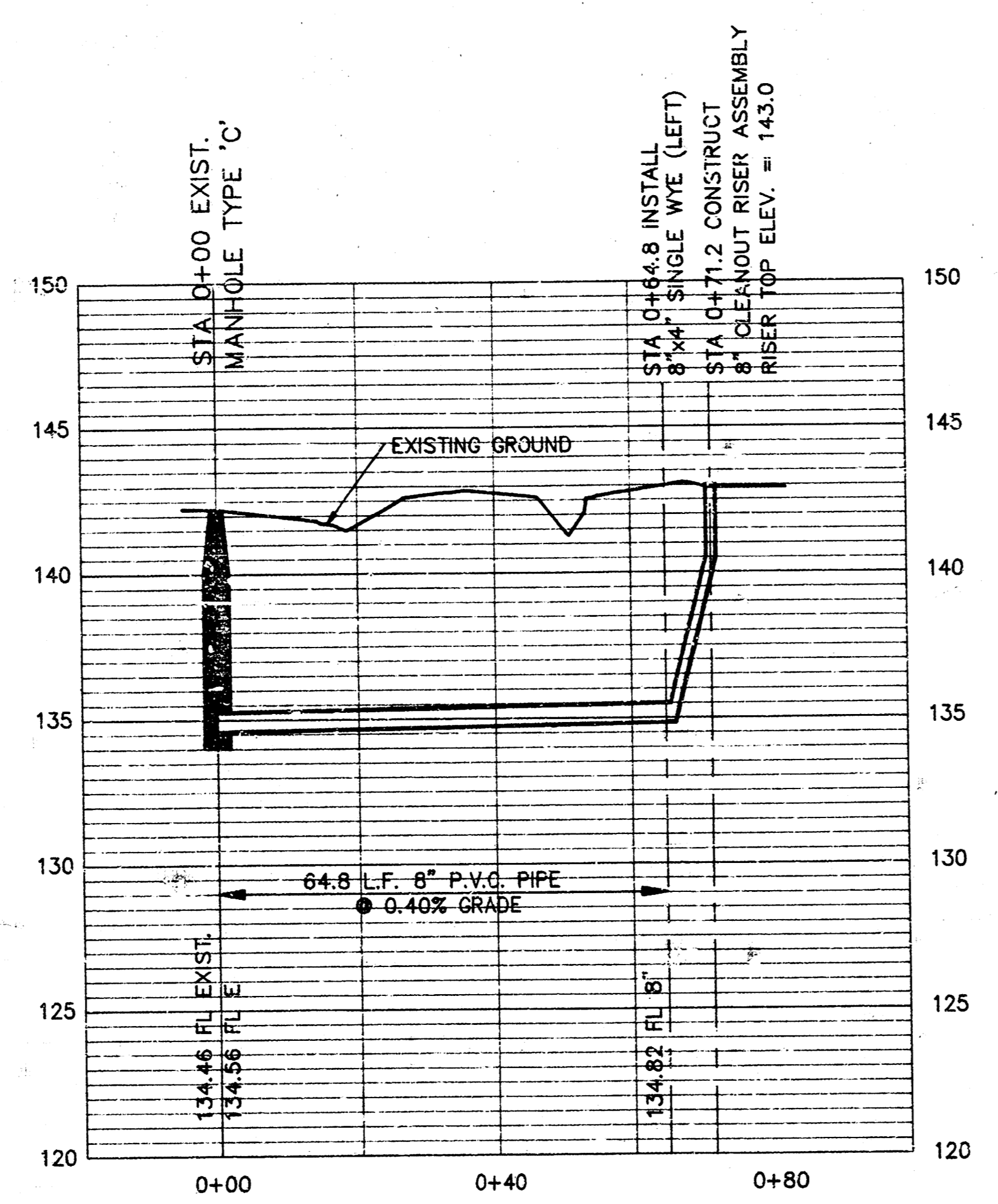
Bolt Pen plan



B.M. - SPIKE IN SOUTH FACE OF P.P.,
NORTHWEST CORNER MAPLE AND SOCORA
ELEV. = 142.97



SCALE PLAN 1" = 20'
PROFILE 1" = 20' HORZ.
1" = 5' VERT.



LATERAL 52, MAIN 4, SW. INTERCEPTOR
PROJ. NO. 468-82195 (741106)
DRAWN BY R. LOOMIS

SHEET 2 OF 2

1-1-A-81