

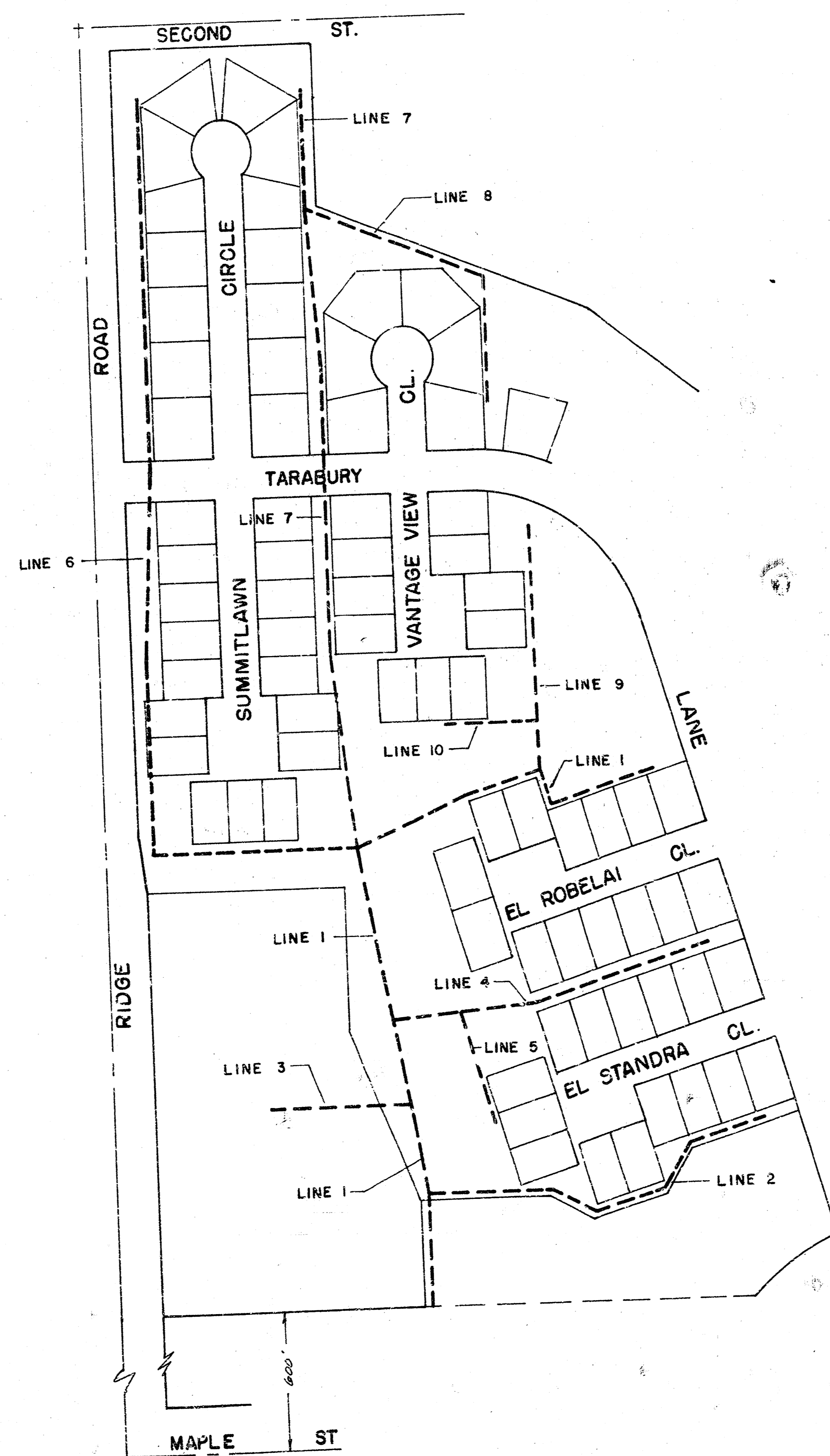
LAT 3, MAIN 6, SOUTHWEST INTERCEPTOR

CITY OF WICHITA, KANSAS

R. W. LINN — CITY ENGINEER

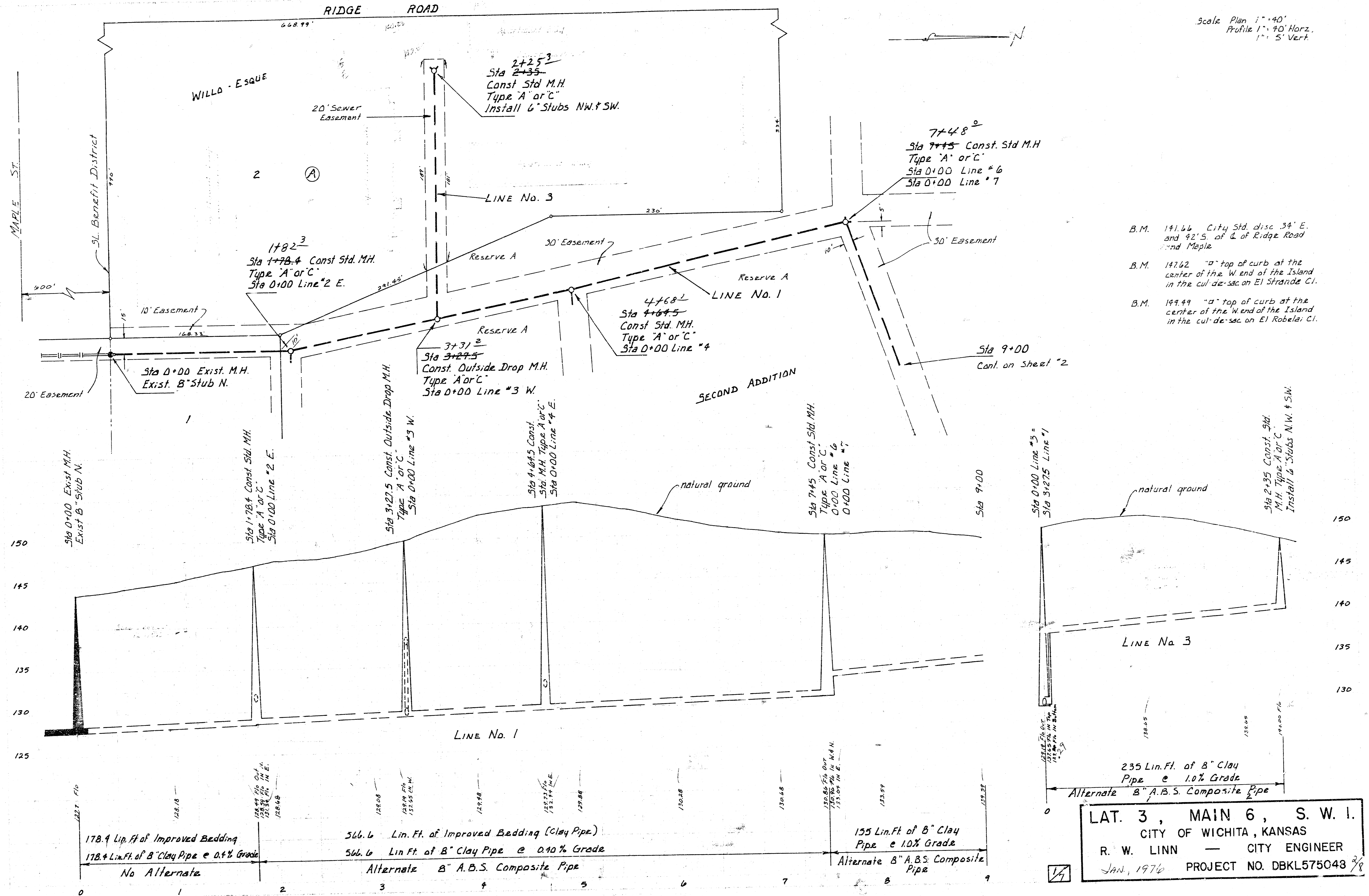
PROJECT NO. DBKL575048

As Built 7-12-75



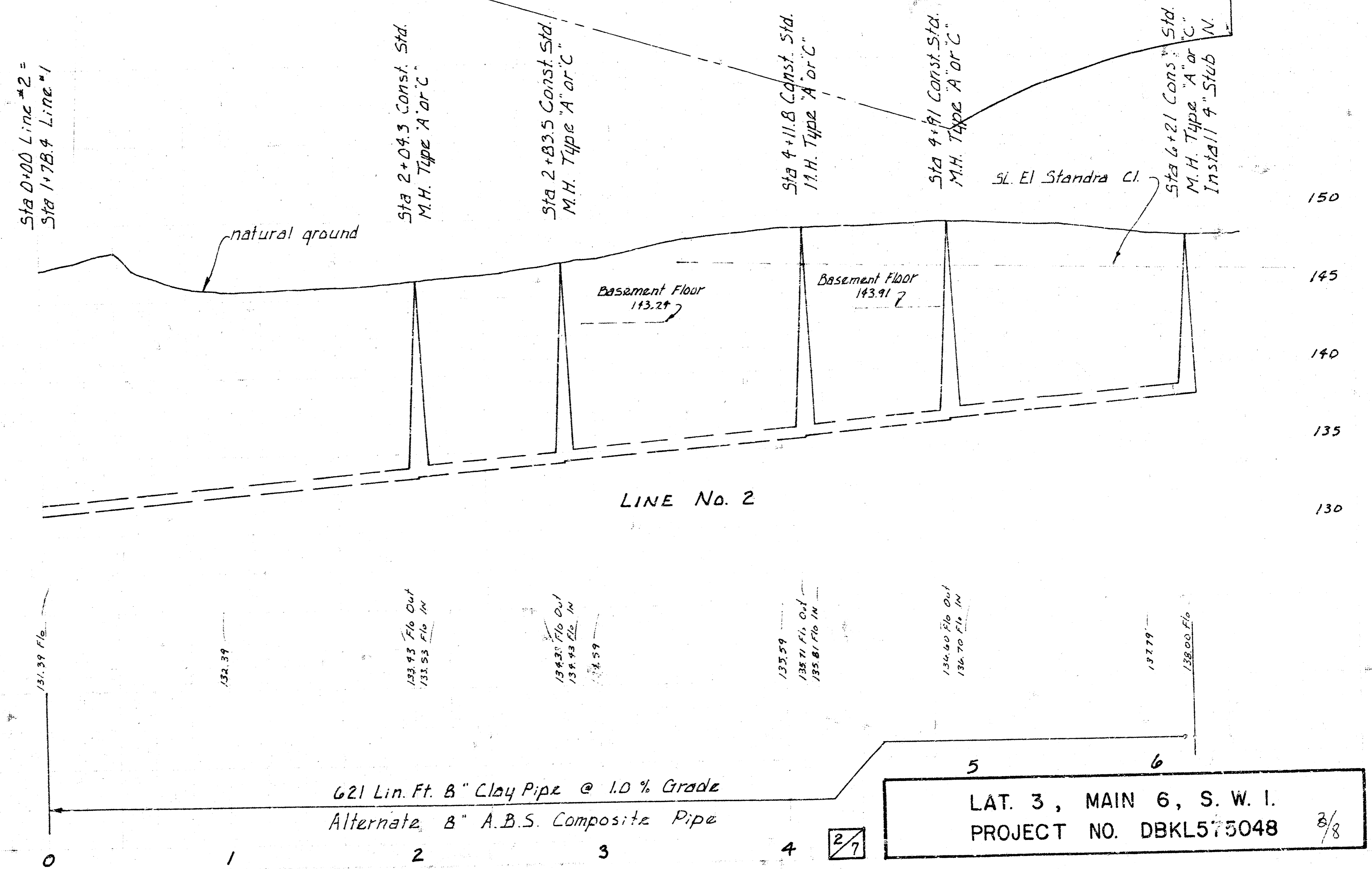
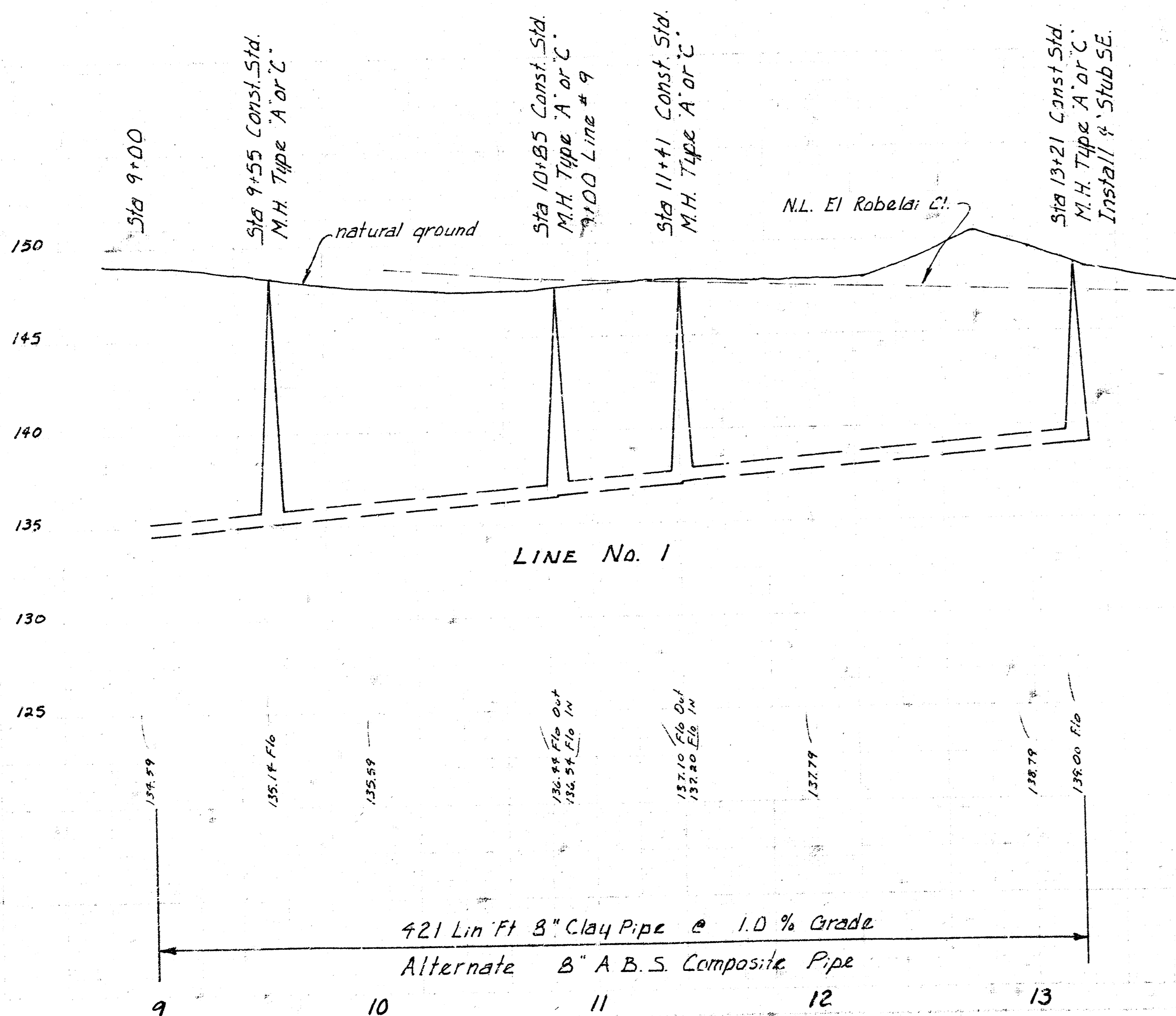
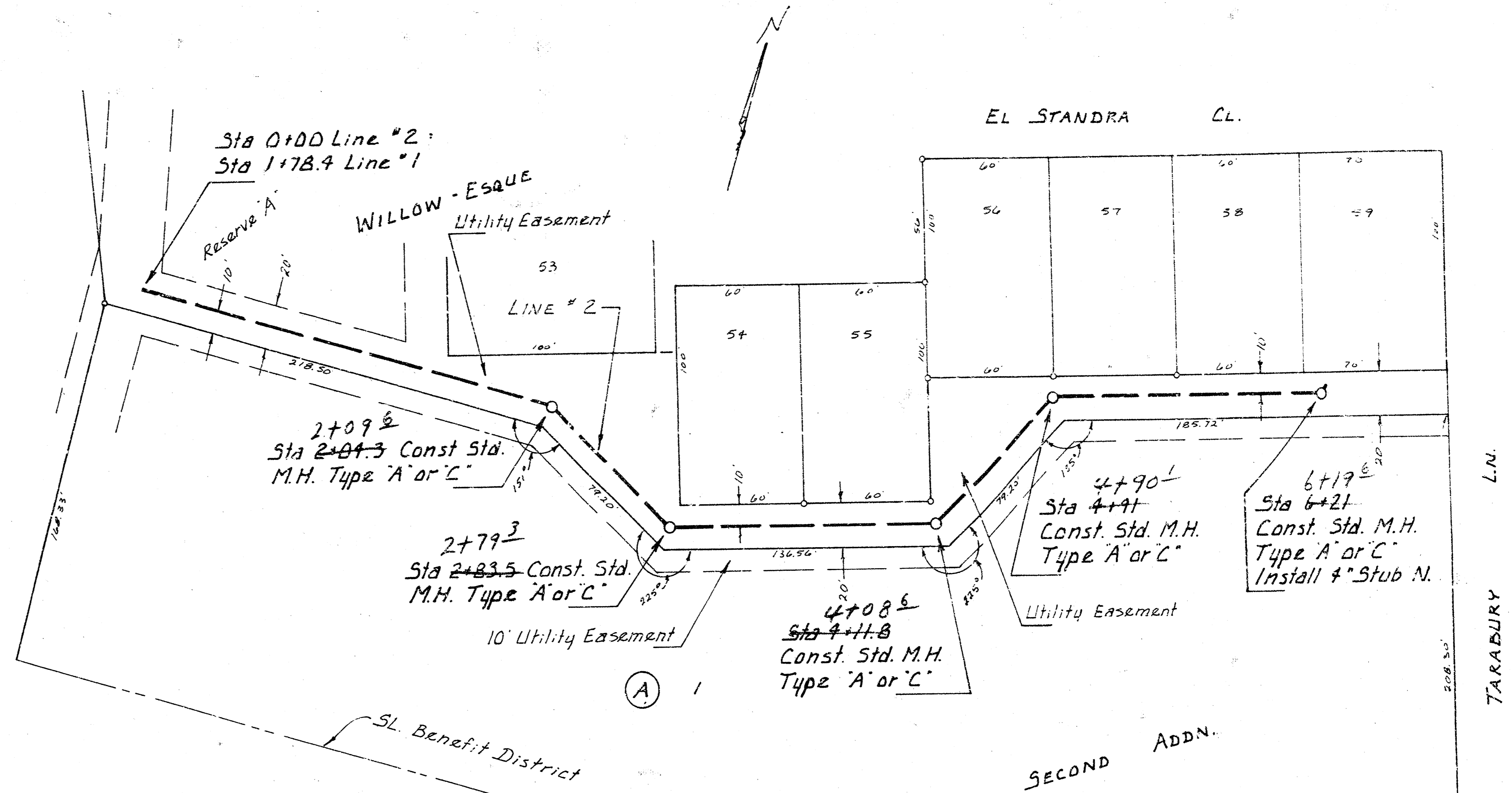
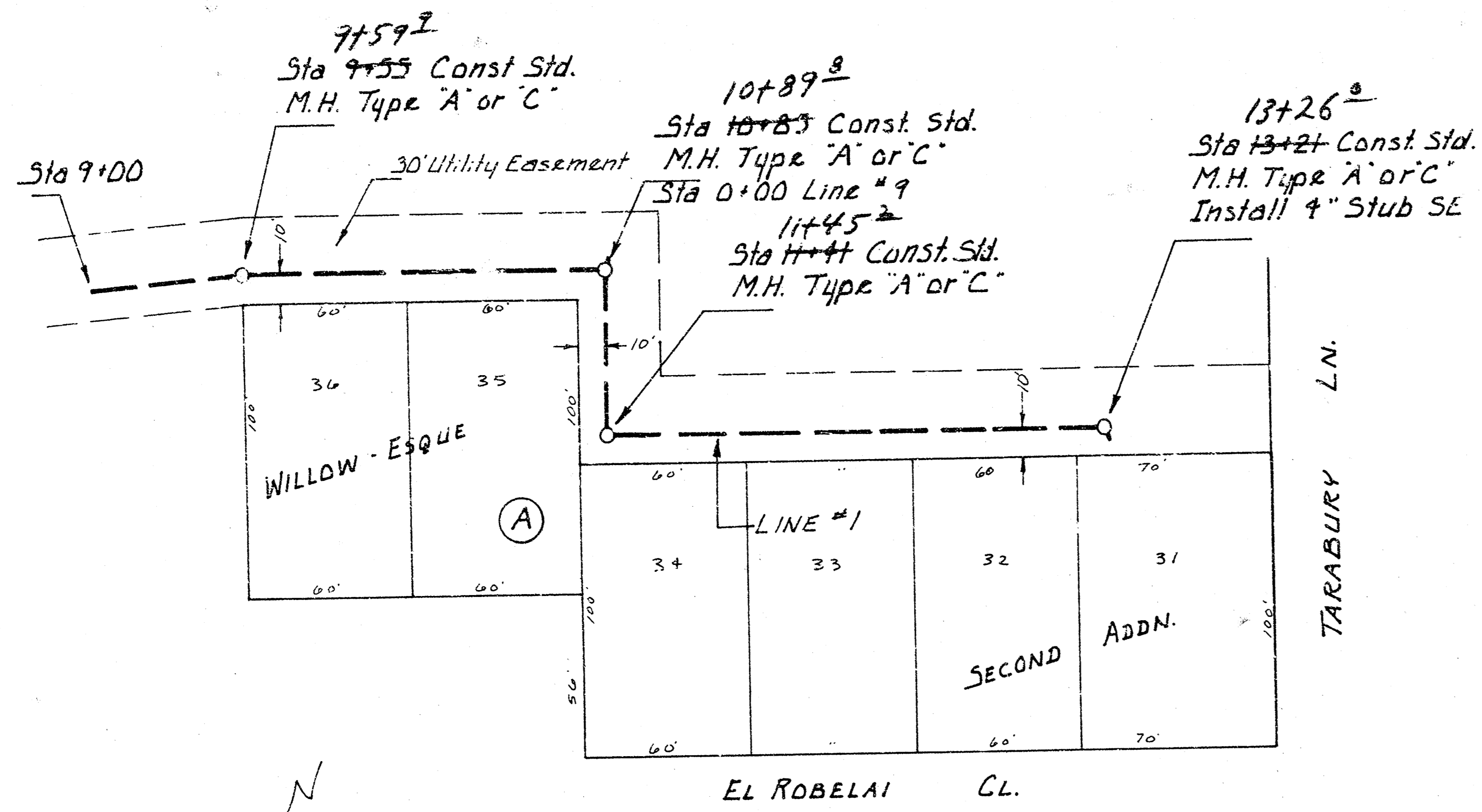
PL 259 + L.F. 255
R. Linn

Scale Plan 1" = 40'
Profile 1" = 40' Horz.
1" = 5' Vert.

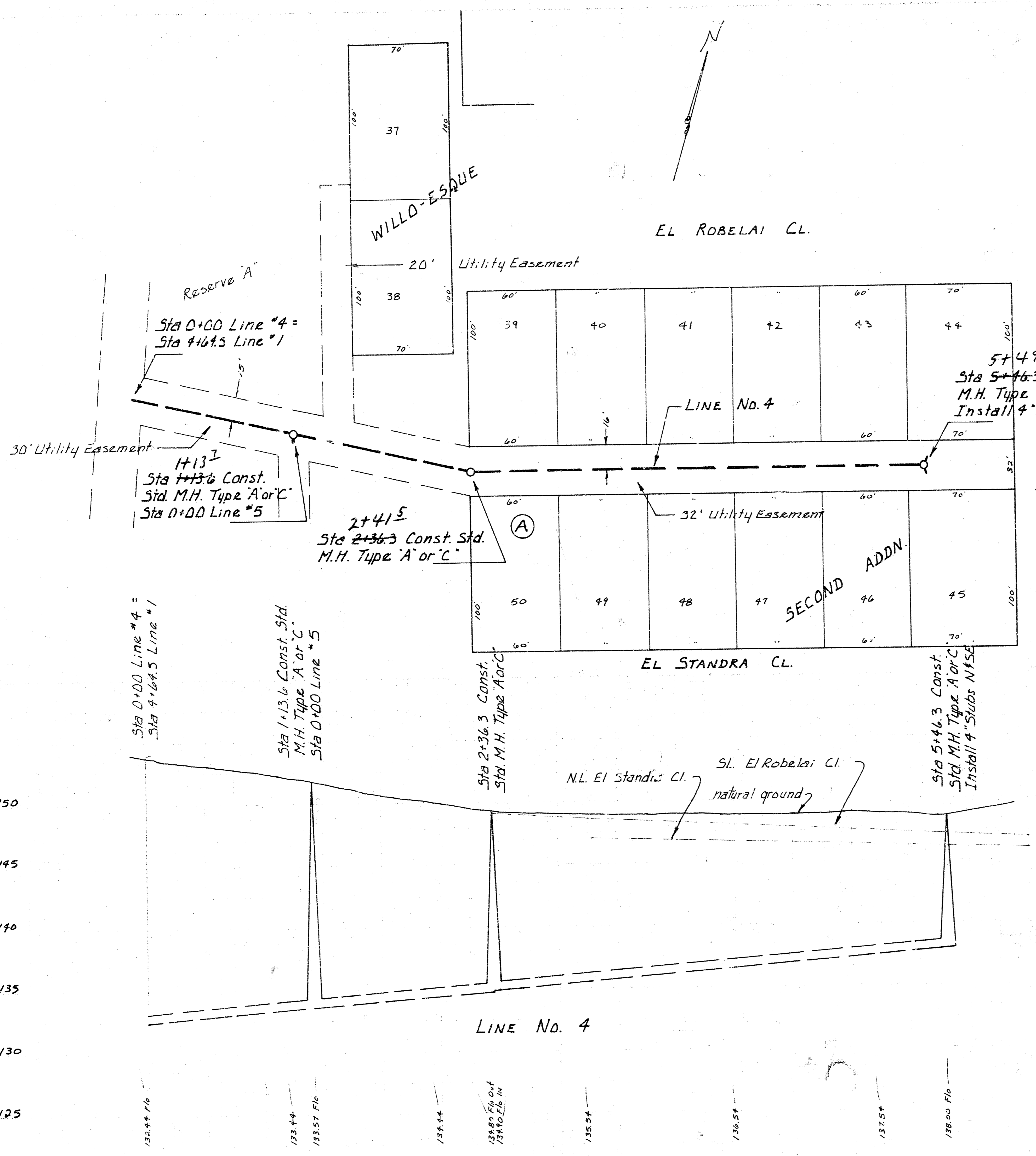


- B.M. 141.66 City Std. disc 34" E. and 92" S. of W. end of Ridge Road and Maple
- B.M. 147.62 "a" top of curb at the center of the W. end of the Island in the cul-de-sac on El Strada Cl.
- B.M. 149.99 "a" top of curb at the center of the W. end of the Island in the cul-de-sac on El Robelar Cl.

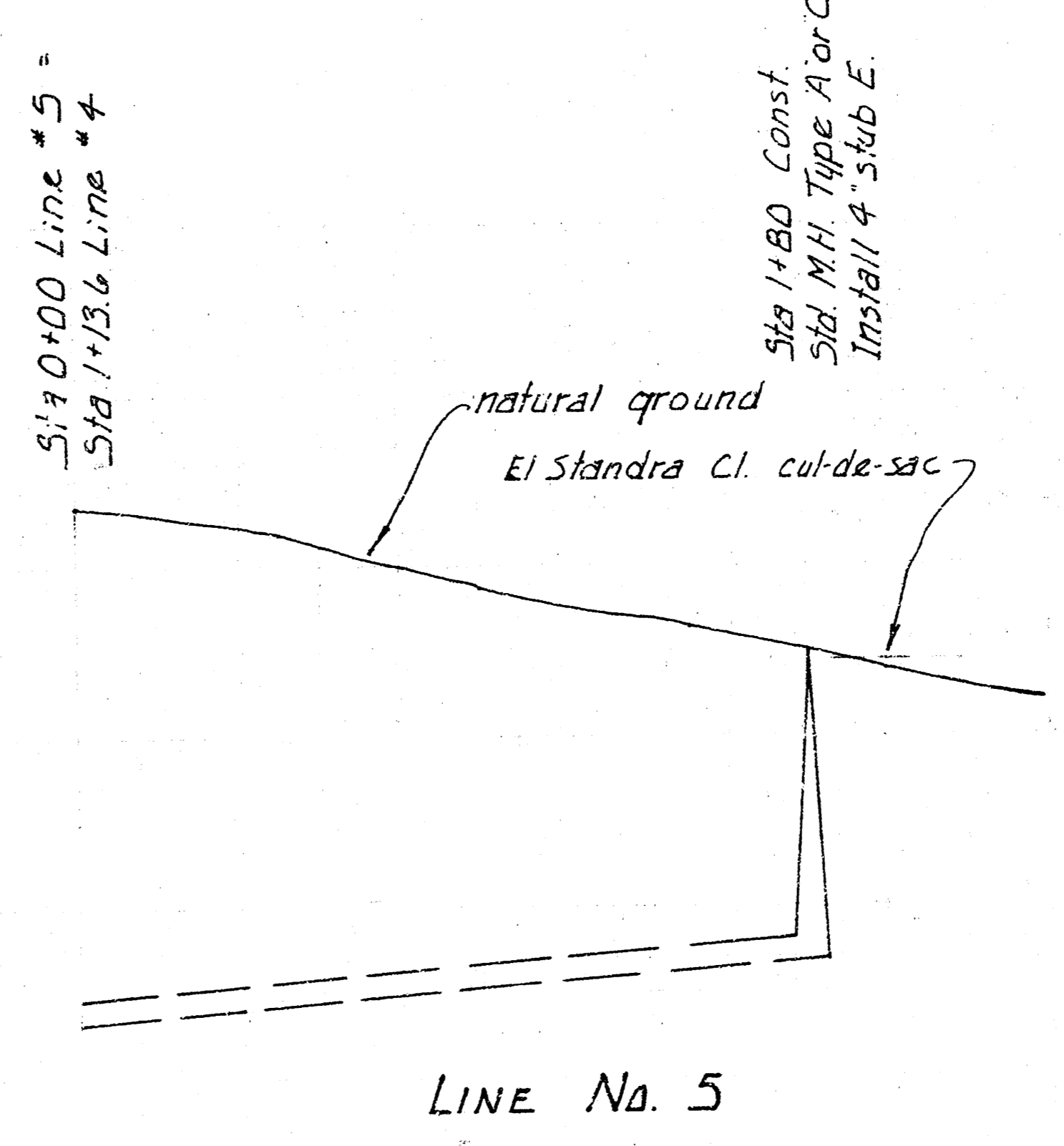
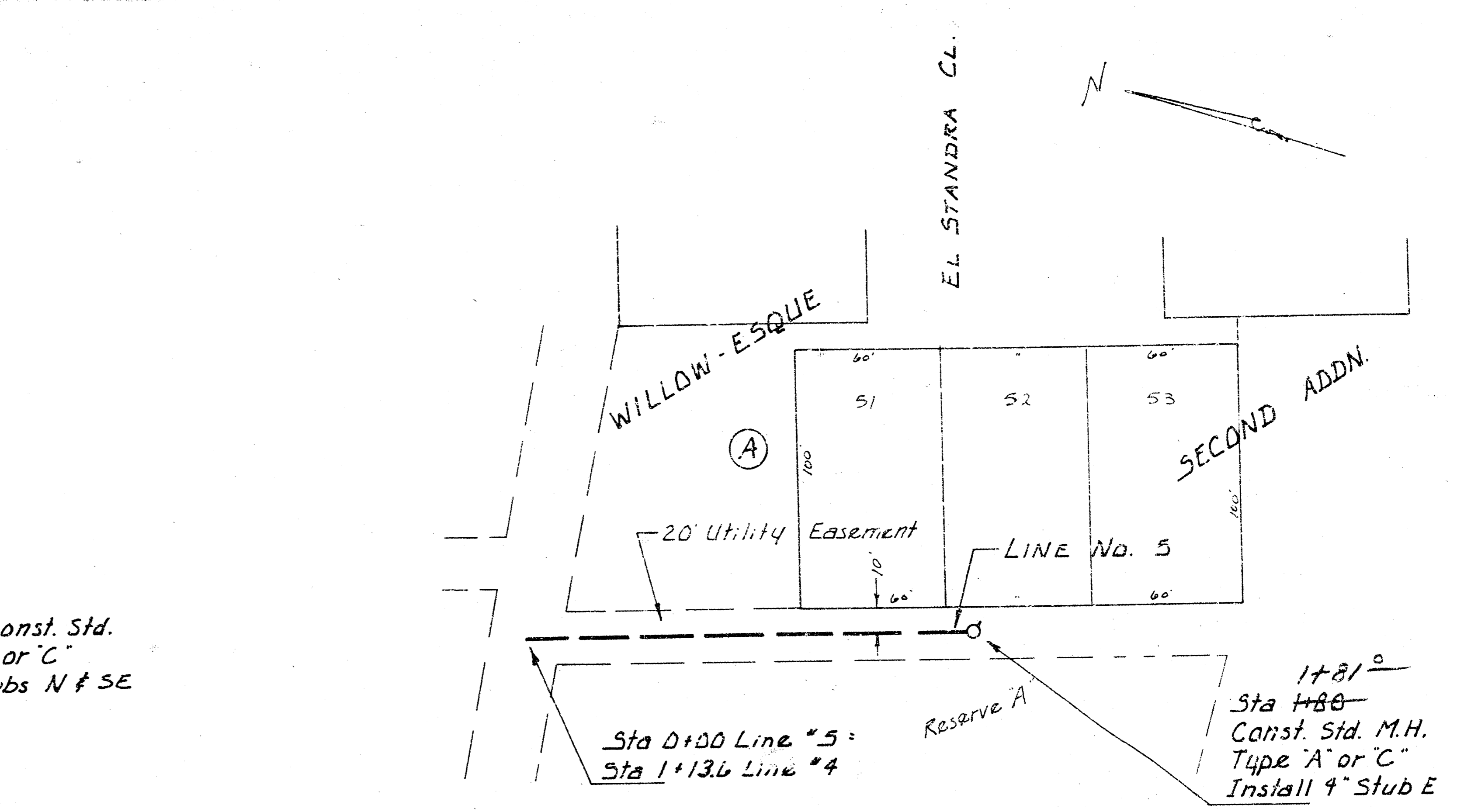
LAT. 3, MAIN 6, S. W. I.
CITY OF WICHITA, KANSAS
R. W. LINN — CITY ENGINEER
JAN, 1976 PROJECT NO. DBKL575048 3/8



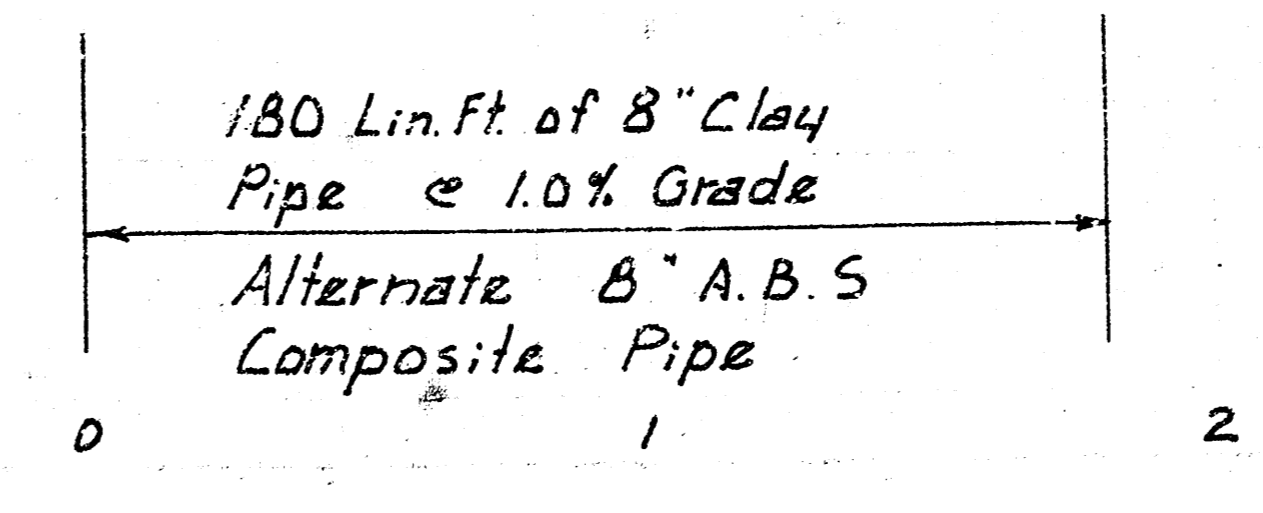
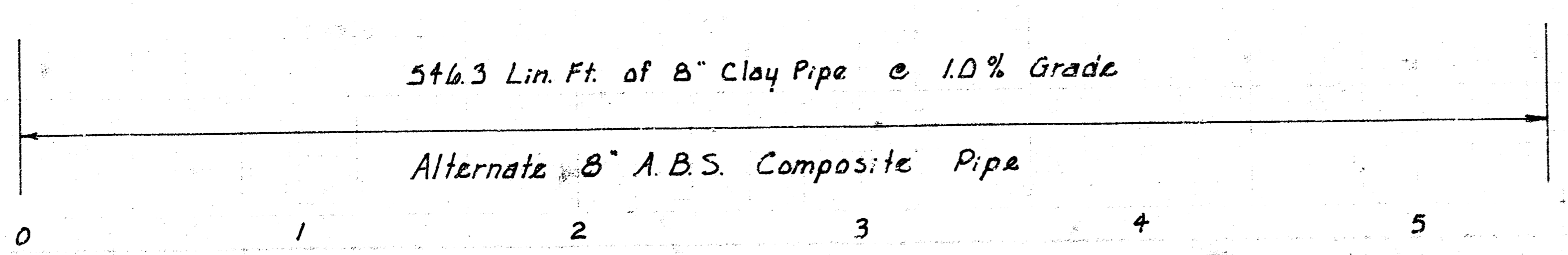
LAT. 3, MAIN 6, S. W. I.
PROJECT NO. DBKL575048



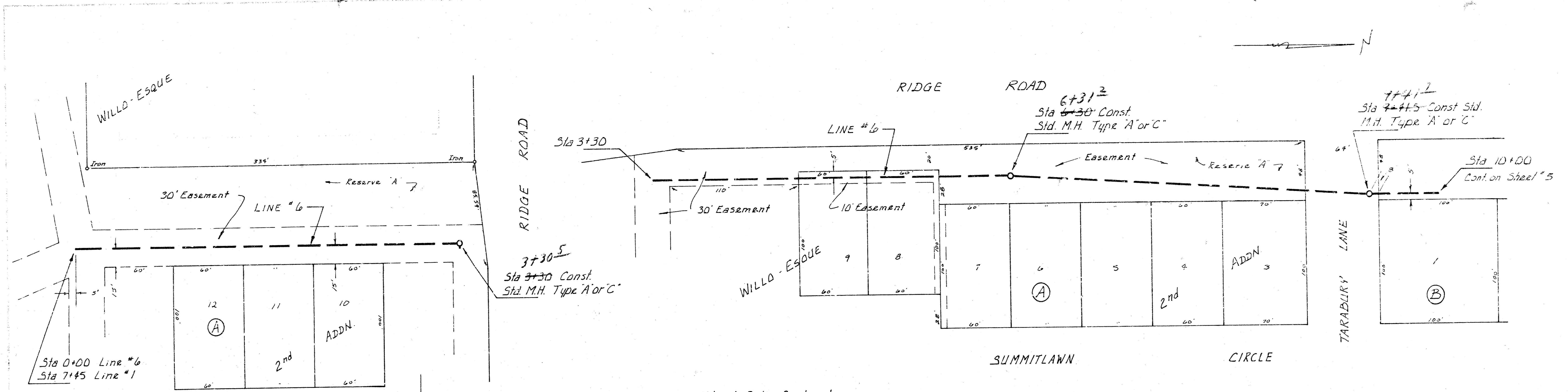
150
145
140
135
130
125



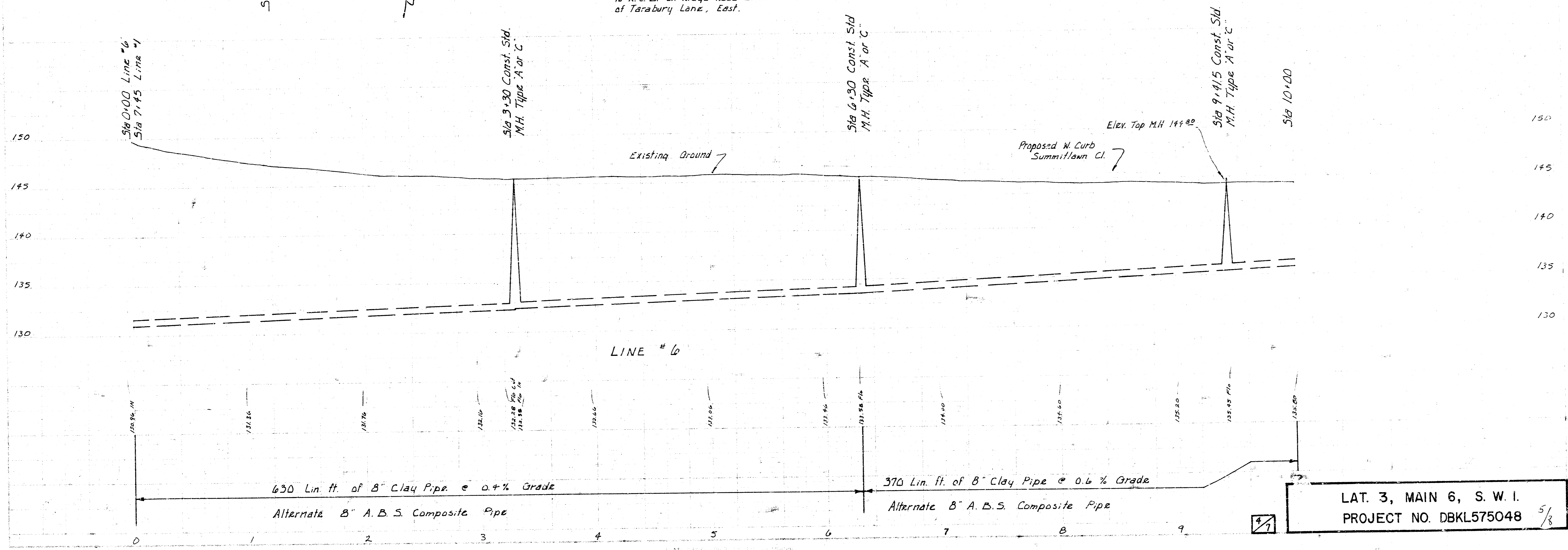
150
145
140
135
130



3/7
LAT. 3, MAIN 6, S. W. I.
PROJECT NO. DBKL575048 4/8



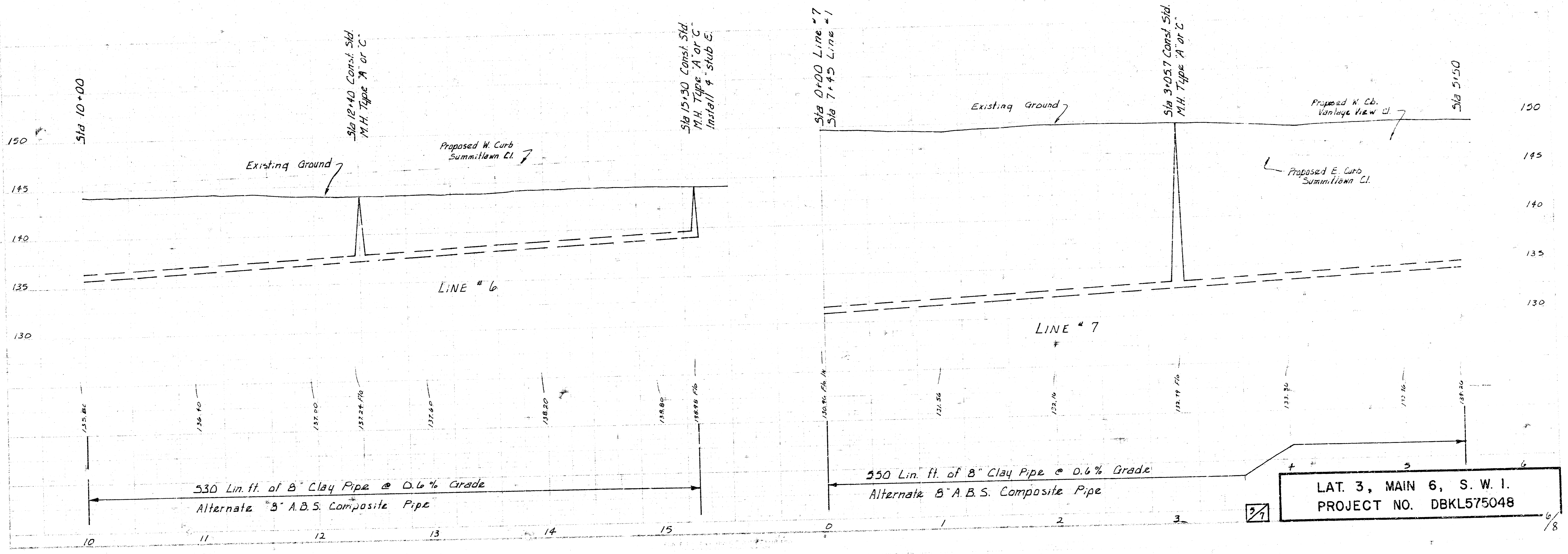
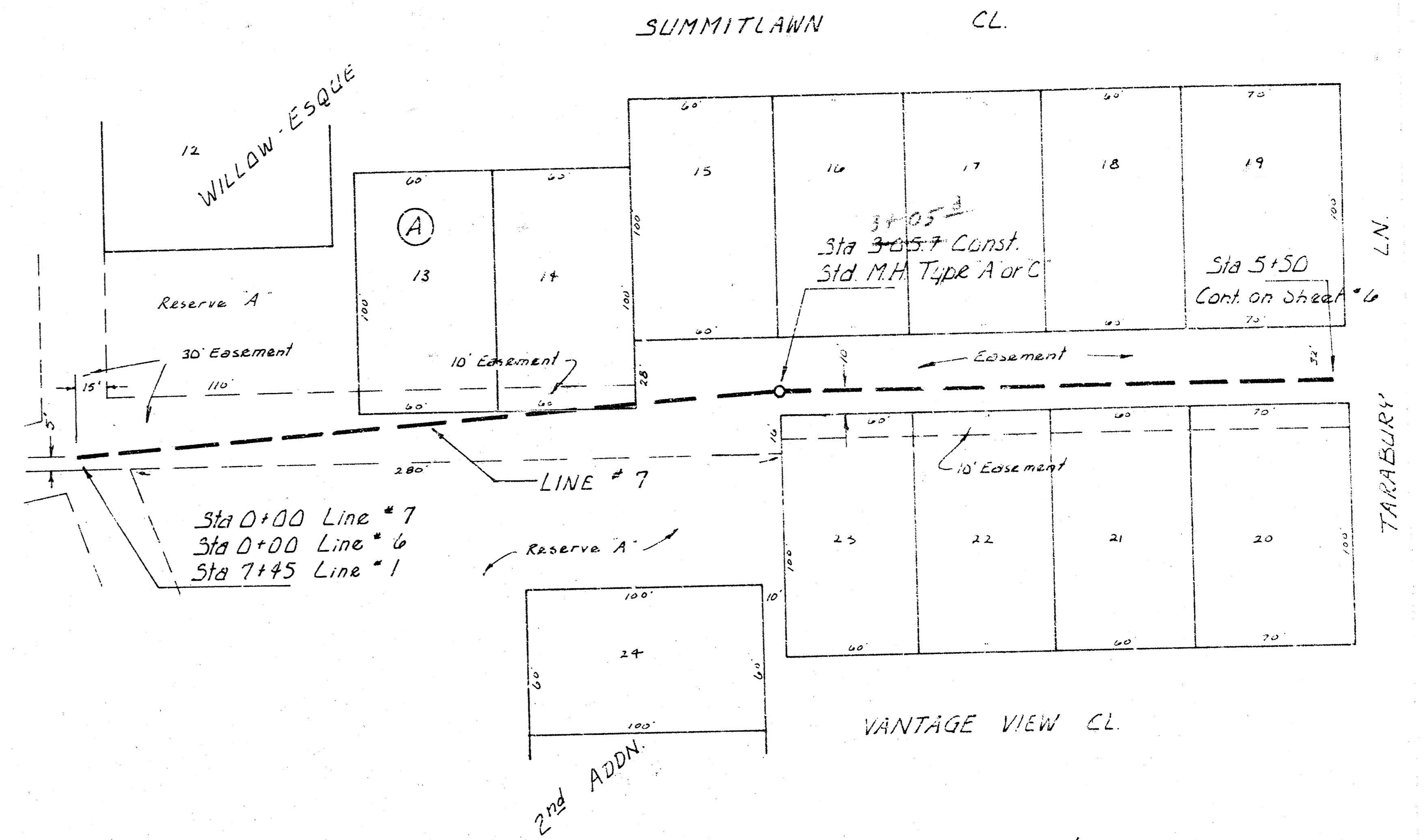
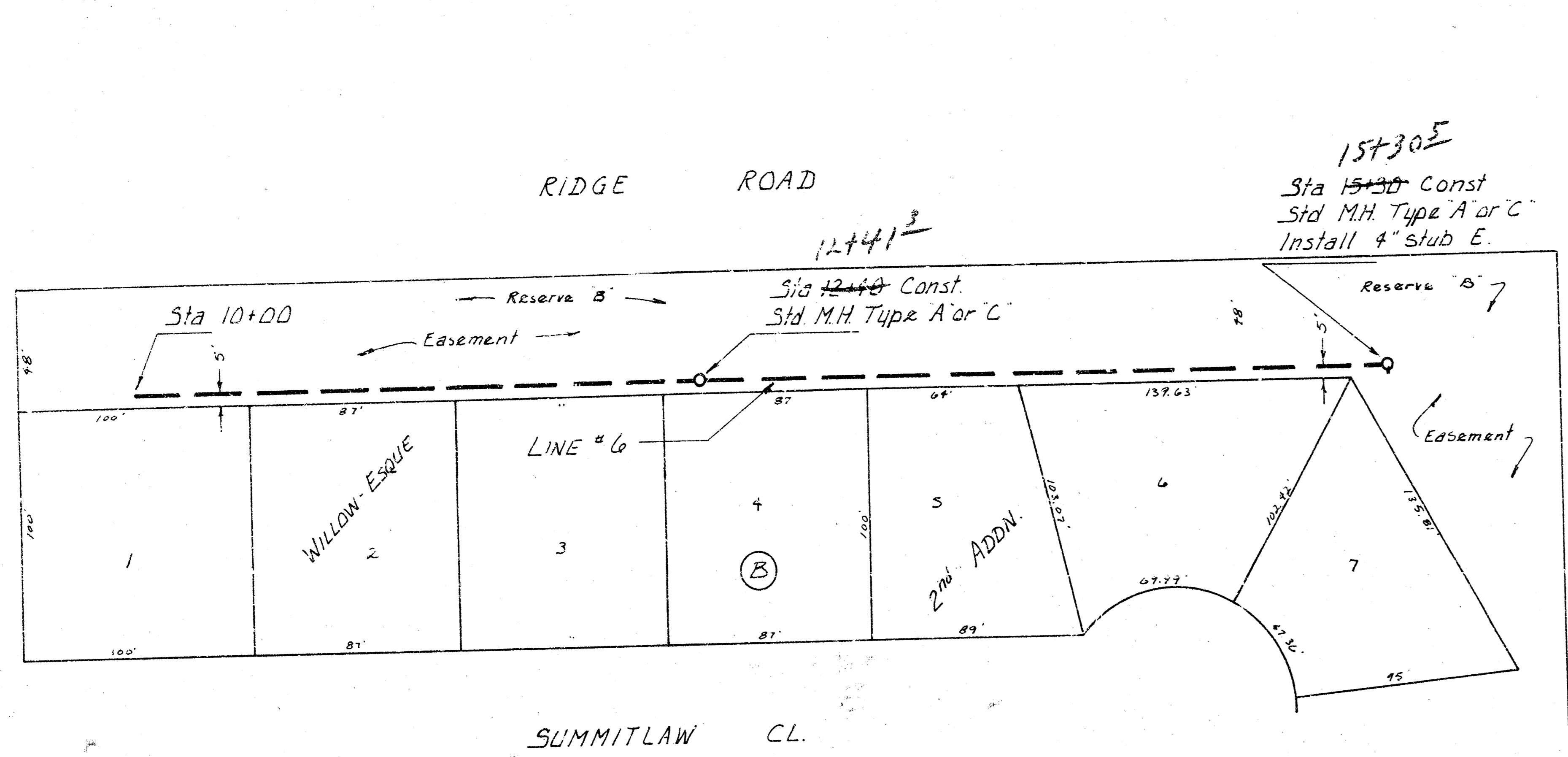
- B.M. 194.96 City Sid. at Ridge Road and 2nd St. 39.5' north and 48' west of the E of both
- B.M. 147.21 Railroad spike, north side power pole on S.W. corner Ridge Road and Douglas Ave.
- B.M. 146.58 "X" cut on center of East Headwall to R.C.B. on Ridge Road at the Center of Tarabury Lane, East.



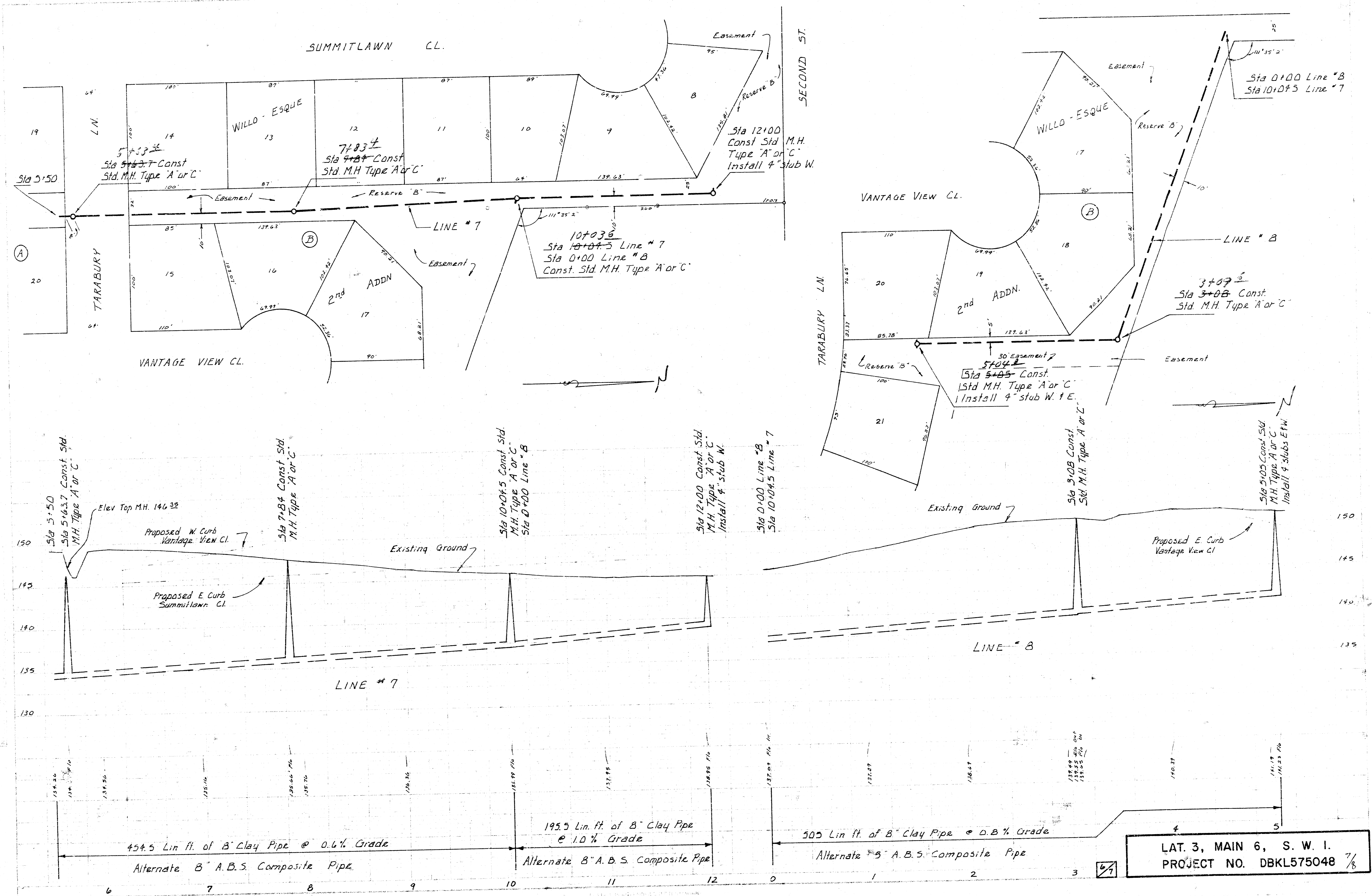
630 Lin. ft. of 8" Clay Pipe @ 0.4% Grade
 Alternate 8" A.B.S. Composite Pipe

370 Lin. ft. of 8" Clay Pipe @ 0.6% Grade
 Alternate 8" A.B.S. Composite Pipe

LAT. 3, MAIN 6, S. W. I.
 PROJECT NO. DBKL575048 5/8



LAT. 3, MAIN 6, S. W. I.
PROJECT NO. DBKL575048

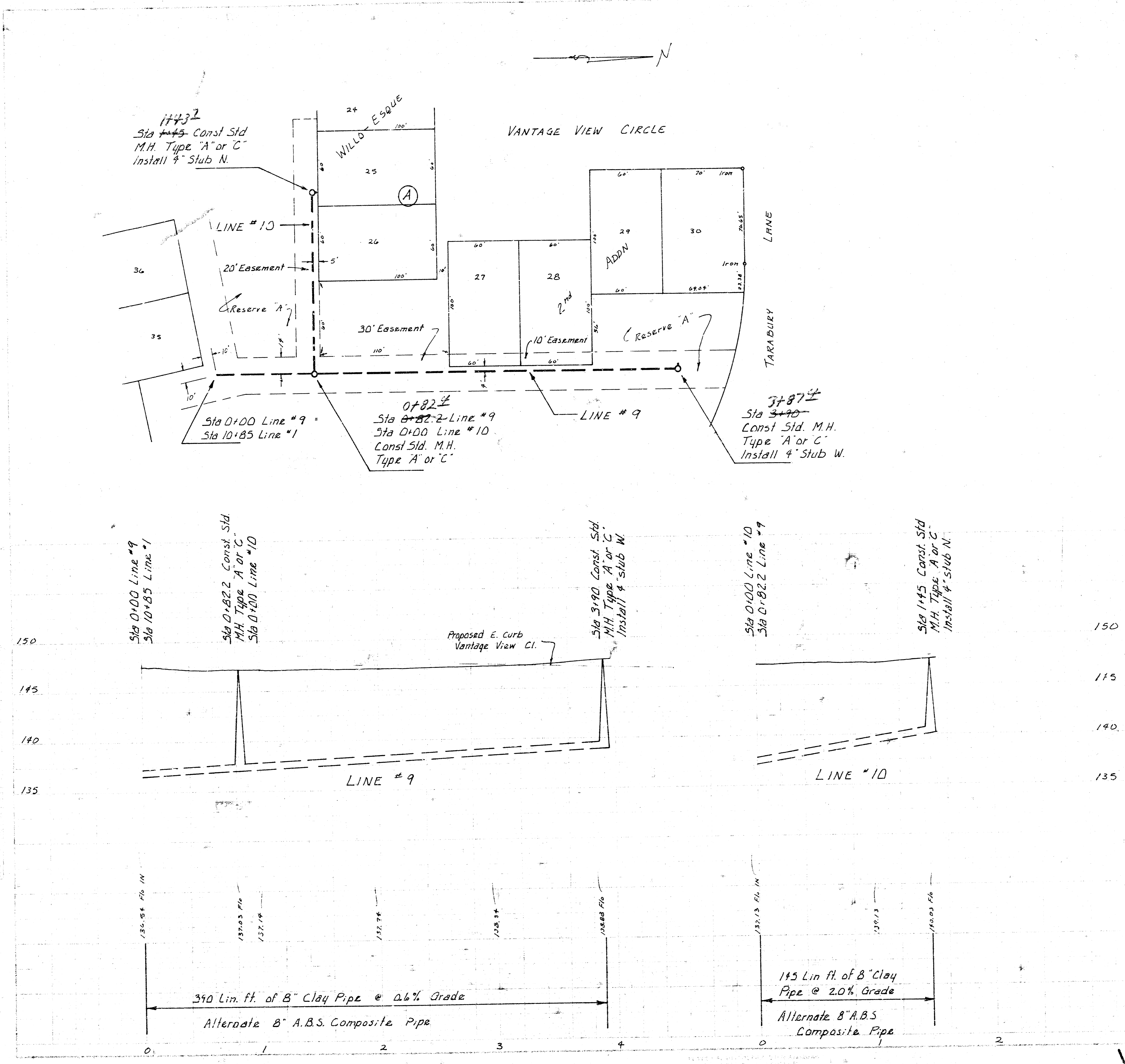


454.5 Lin. ft. of 8" Clay Pipe @ 0.6% Grade
 Alternate 8" A.B.S. Composite Pipe

195.5 Lin. ft. of 8" Clay Pipe @ 1.0% Grade
 Alternate 8" A.B.S. Composite Pipe

505 Lin. ft. of 8" Clay Pipe @ 0.8% Grade
 Alternate 8" A.B.S. Composite Pipe

LAT. 3, MAIN 6, S. W. I.
 PROJECT NO. DBKL575048 7/8



LAT. 3, MAIN 6, S. W. I.
 PROJECT NO. DBKL575048

14
 8
 11